



ENCUESTA  
**INTERCENSAL**  
2025

# PUBLIC CONSULTATION PROCESS



# POLICY/REGULATORY FRAMEWORK

## PUBLIC CONSULTATION

### INEGI policy framework



- Art. 88 NLEGIS.
- Subparagraph 7. General Guidelines on methodologies for national interest information publication



Period to submit proposals: 20 bussiness days. It can be extended by up to 10 more.

### Mechanism for citizen involvement

Published on the institutional web

Public meetings



Period: January 15th to february 12th, 2024.



Meetings with stakeholders, civil society, government offices.

## PURPOSE

To make the methodological and conceptual approaches of the Intercensal Survey, as well as the questionnaires, available for the consideration of society in order to gather observations, comments or contributions that will help enrich the statistical project.



Web site and internal management informatical system designing

Preparation of methodological and conceptual documents



Presentation to Government Board



Period of submitting proposals



Database processing  
Preparation of general report



Analysis of feasibility  
Preparation of responses



Conceptual framework and themes definition

Diciembre-Enero

Enero-Febrero

Marzo-Septiembre

Septiembre-Diciembre

2023

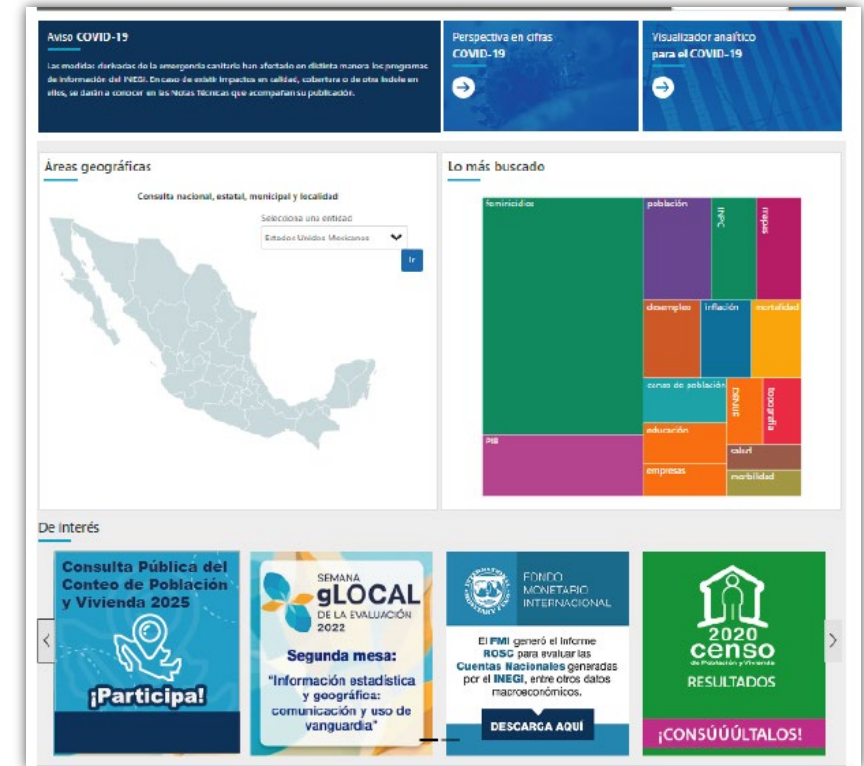
2024

# PUBLIC CONSULTATION ONLINE



The Public Consultation is available at:



- 🏠 Official website of INEGI [www.inegi.org.mx](http://www.inegi.org.mx)
- 🏠 Website of the National Statistical and Geographic Information System (SNIEG) <https://www.inegi.org.mx/app/consultapublica/>
- 🏠 Call center. For people who wish to register a contribution but have questions about filling out forms, the number 800 111 46 34 will be available.



## Meetings with regional and state INEGI coordinations

- 🏠 They were held in January and February 2024. They were informative and aimed to encourage attendees to participate in the Online Public Consultation.
- 🏠 Meetings in Mexican states were held in coordination with the regional and state coordinations.



-  Monitoring **will begin with the publication of the consultation** and will end when all the contributions have been answered.
-  All contributions are analyzed taking into account the following **aspects to determine the feasibility of the proposals** :



**It is required for the definition of public policy, on a five-year basis,** both at the national level, federal entity level and at the municipal or territorial demarcation level, as well as for the planning and monitoring of programs.



**It should not exist in other data sources** with the same levels of geographical disaggregation and available in periods of 5 years or less.



The questions **should not address sensitive or complex issues** that require specialized training for interviewers.

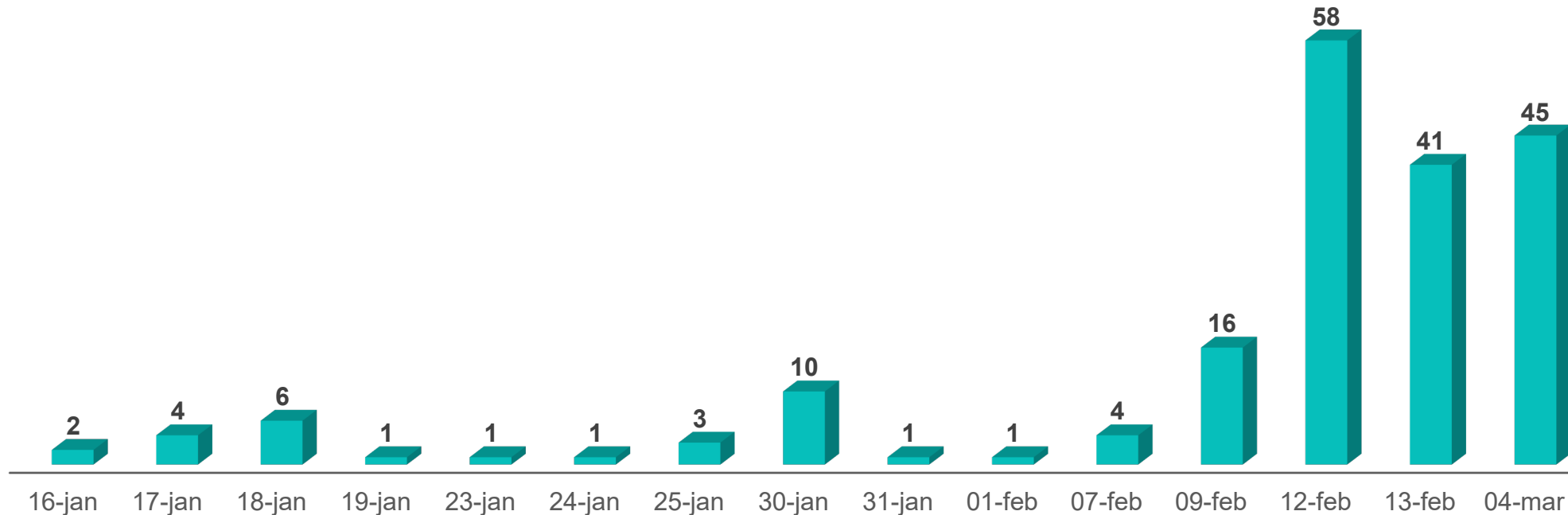
# GENERAL RESULTS OF THE **PUBLIC CONSULTATION**

---

# CONTRIBUTIONS


**123 formats** were received which contained **194 contributions**, of which:

- There were 171 proposals, 22 comments and 1 question.





# CONTRIBUTIONS

 93.5% (160) of the 171 proposals were about conceptual design, the most requested being:

Population themes	
Economic characteristics	16
Basic services and sanitary facilities	15
Disability	12
Everyday mobility	10
Monetary income from other sources	9
International migration	8
Housing tenure	8
Ethnicity	8

Housing themes	
Health Services	7
Construction features	6
Equipment	6
Regular residents	5
Disclosure of results	5
Internal forced displacement	4
Unpaid work	4
Education	4
Internal migration	4



ENCUESTA  
**INTERCENSAL**  
2025

# THANKS!

Conociendo  
**México**

800 111 46 34

[ww.inegi.org.mx](http://ww.inegi.org.mx)

[atencion.usuarios@inegi.org.mx](mailto:atencion.usuarios@inegi.org.mx)



**INEGIINFORMA**