

ADS 3rd Workshop

DEMO & Visits

To effectively demonstrate the latest advancements in automated driving technology and provide GRVA participants with a firsthand experience of the innovative scientific and technological developments introduced by Chinese automated vehicles, we organized this observation and experiential activities related to automated driving during the conference.

1. Contents of the event

Visit the exhibition of automated driving application scenarios, the exhibition hall of Beijing high-level automated driving Demonstration Zone, and the Xiaomi Automobile Factory.

2. Event time

October 16, 2024, 9:00-12:00

3. Running order

9:00-9:20 Experience automated driving vehicles and demonstration fields

9:20-9:30 Visit the exhibition hall in an automated driving vehicle

9:30-10:00 Visit the exhibition hall of Beijing High-level automated driving Demonstration Zone

10:00-10:30 Take an automated driving vehicle to the Xiaomi Auto factory

10:30-11:30 Visit Xiaomi Auto Factory

11:30-12:00 Take an automated driving vehicle back

to Etrong Convention and Exhibition Center

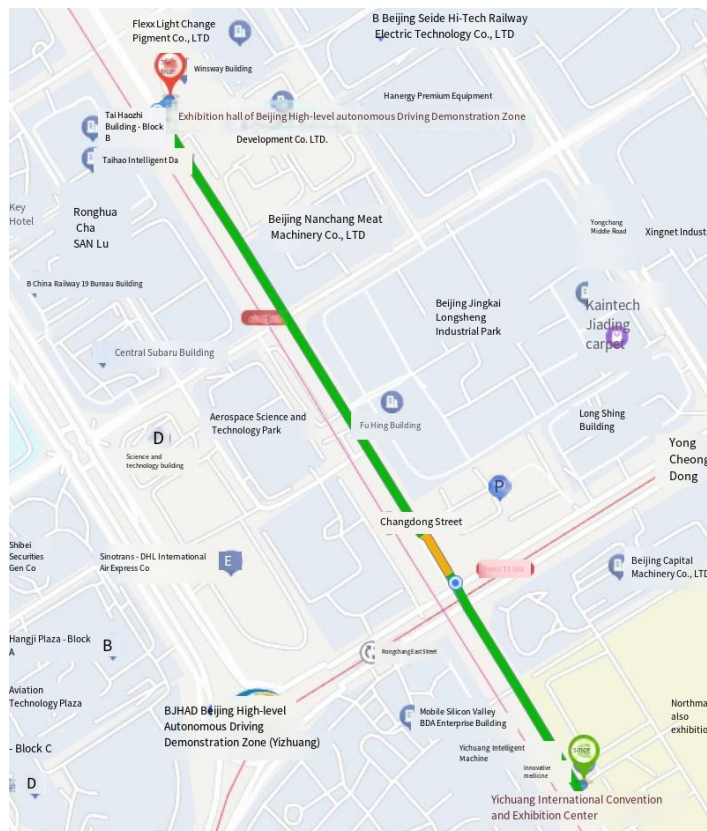
4. Vehicles and Providers

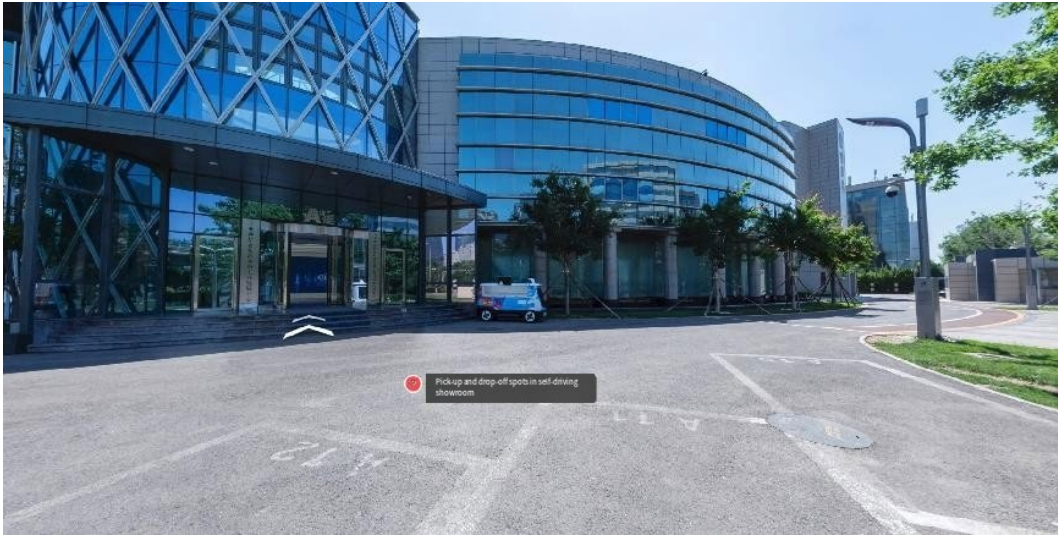
Pony Zhixing 1 SUV, 1 MPV; AUTO X 2 MPVS; Wenyu Zhixing 1 sedan; Shangyi City 3 minibuses; Didi 1 SUV

5. Route

1. Section 1: WICV Pavilion - Self-driving exhibition hall

Etrong International Convention and Exhibition Center - Beijing High-level automated driving Demonstration Zone Exhibition Hall (about 1 km)



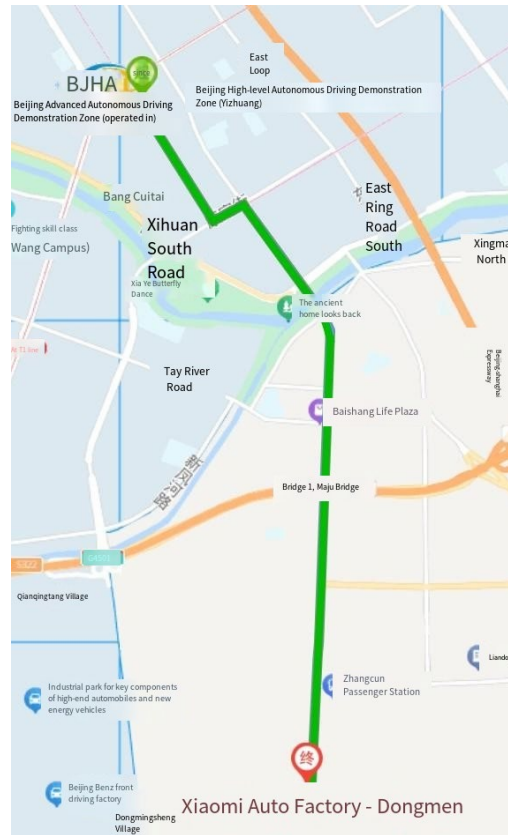


Pick-up and drop-off point of the self-driving exhibition hall



The starting point at the exhibition center

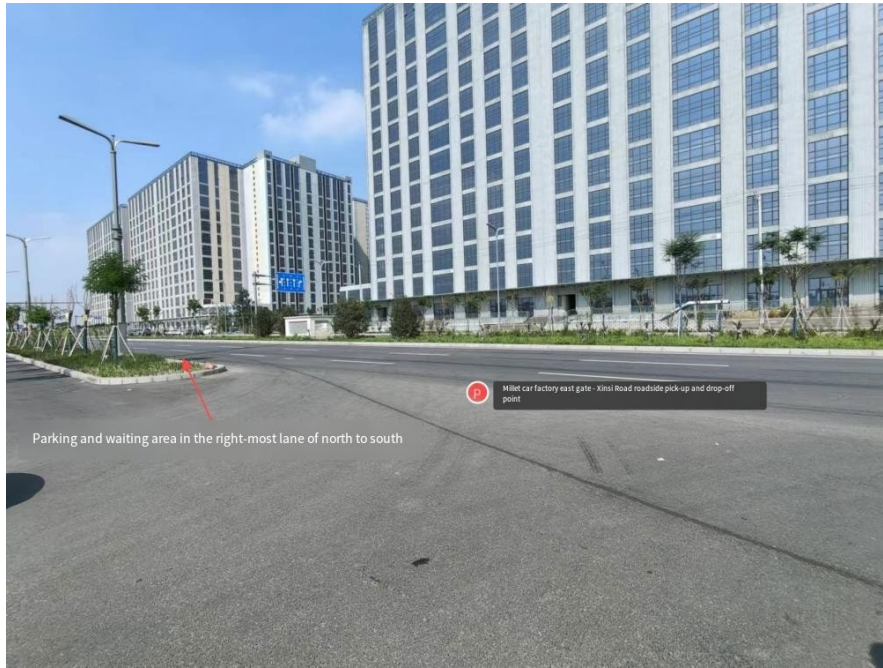
2. Section two: self-driving exhibition hall - XIAOMI auto factory



Self-driving showroom - XIAOMI Auto Factory East Gate (about 10 km)



A legend of the pick-up and drop-off point of Xiaomi Automobile Factory



Real picture of pick-up and drop-off points and parking waiting area

3. Section 3: Xiaomi Auto Factory -WICV Exhibition Hall



Xiaomi Auto Factory - Etrong International Convention and Exhibition Center (about 10 km)