



UN/CEFACT

Simple, Transparent and Effective Processes
For Global Commerce

BUSINESS REQUIREMENTS SPECIFICATION (BRS)

Business Domain: Cross Industry – Supply Chain

Business Process: Despatch and Receive Process

Title: Cross Industry Despatch and Receive Process

UN/CEFACT International Trade and Business Processes Group: TBG1

Version: 1.00.13

Release: 1

Date of TBG approval: tbd

Document Summary

Document Item	Current Value
Document Title	Business Requirements Specification Cross Industry Despatch and Receive Process
Date Last Modified	20-feb-2009
Current Document Issue	1.00.13
Status	Draft
Document Description (one sentence summary)	This BRS details the requirements for the Despatch and Receive process.

Log of Changes

Version	Date of Change	Paragraphs changed	Summary of Change
1.00.13	20-feb-2009		Version sent for approval to TBG Steering

TABLE OF CONTENTS

1. Preamble	4
2. References	4
3. Objective	4
4. Scope.....	5
4.1. Business Process Elaboration	5
4.1.1. Business Process Flow	7
4.1.2. Business Collaboration.....	10
5. Business Requirements	12
5.1. Information Flow Definition.....	12
5.1.1. Advise Despatch (Business Transaction)	12
5.1.2. Correct Despatch Advice (Business Transaction).....	13
5.1.3. Advise Receipt (Business Transaction)	15
5.2. Information Model Definition	18
5.2.1. Business Entity Relationships	18
5.2.2. Business Documents.....	20
5.2.2.1. Despatch Advice (Business Document)	20
5.2.2.2. Receiving Advice (Business Document).....	35
5.3. Business Rules	35
5.4. Definition of Terms	35

1. Preamble

The current practice of the exchange of business documents by means of telecommunications – usually defined as e-Business presents a major opportunity to improve the competitiveness of companies, especially for Small and Medium Enterprises (SME).

Started as an initiative by CEN/ISSS Work shop eBES, the European Expert Group 1 (EEG1) – Supply Chain & e-Procurement developed the Cross Industry Despatch and Receive process in 2006. The Cross Industry Despatch and Receive process has been compiled using the EUROFER ESIDEL version 1.0 and the Boost Aero version 1.0 as a base, with contributions and submissions from: EUROFER, ODETTE, GS1, EDIFrance, EDIBUILD and Boost Aero.

After the UN/CEFACT Forum meeting in Dublin in March 2007, the BRS was further developed with requirements contributed from TBG1 members such as GS1, UBL, EDIFrance, US Department of Defense, JAIF and others. Also requirements were implemented from Construction (TBG 6). The structure was reworked according to the Buy-Ship-Pay process model developed by TBG 14. The high level entity model was based on the Buy-Ship-Pay information model jointly developed by TBG1, TBG2, TBG3, TBG5 and TBG18.

The purpose of this document is to define globally consistent Despatch and Receive process for worldwide supply chains, using the UN/CEFACT Modelling Methodology (UMM) approach and Unified Modelling Language to describe and detail the business processes and transactions involved.

The structure of this document is based on the structure of the UN/CEFACT Business Requirements Specification (BRS) document reference CEFACT/ICG/005.

2. References

- UN/CEFACT TBG1 Common Supply Chain BRS, Release 1
- UN/CEFACT TBG2 Buy-Ship-Pay (Including UNeDocs) BRS, version 1.0
- UN/CEFACT Modeling Methodology (CEFACT/TMG/N090R10, November 2001)
- OASIS Universal Business Language (UBL), Version 2.0
- UN/EDIFACT – Despatch advice message, Receiving advice message

3. Objective

The objective of this document is to standardize the Business processes, the Business transactions and the Information entities of the despatch and receive process used by the industries in the supply chain.

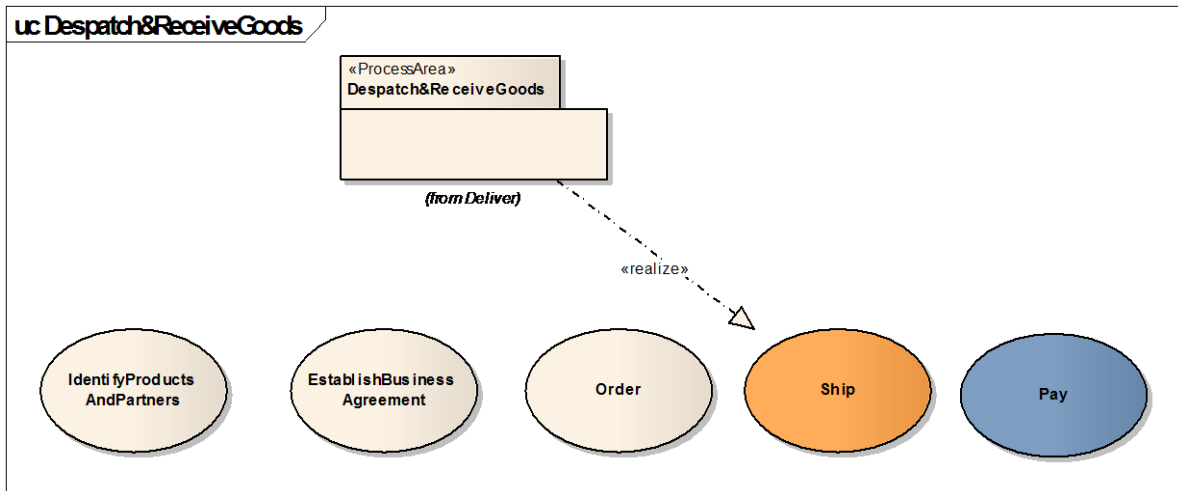
The business process is the detailed description of the way trading partners intend to play their respective roles, establish business relations and share responsibilities to interact efficiently with the support of their respective information systems.

Each Business transaction is realized by an exchange of Business documents (also called messages). The sequences in which these documents are used, composes a particular instance of a scenario and are presented as activity diagrams in the document.

The business documents are composed of Business Information Entities (BIE), which are preferably taken from libraries of reusable business information entities. The contents of the business documents and the Business Information Entities are presented using class diagrams and/or requirement lists.


4. Scope

This section describes the extent and limits of the business process within the supply chain being described in this document.



4-1 Positioning Cross Industry Despatch & Receive within BUY-SHIP-PAY Process Model

Categories	Description and Values
Business Process	Despatch and Receive process in the supply chain BUY-SHIP-PAY/Procurement&Sales/Delivery
Product Classification	All
Industry Classification	All
Geopolitical	Global
Official Constraint	None
Business Process Role	ShipFrom, ShipTo
Supporting Role	Carrier
System Capabilities	No limitations

- 
Note: The processes defined apply only to the collaboration between Ship From (sender of goods) and Ship To (receiver of goods). Internal processes and communication with third parties (such as Transporters, Warehouses, etc.) are outside the scope of this BRS. However the Carrier (Transporter) is in a supporting role in the process as some of the generated documents/data will be carried by them for Proof-of-Delivery Process (POD) and also may re-use information such as locations, weight and Transport packaging

4.1. Business Process Elaboration

The processes contained in the Despatch and Receive process are shown in the following Use Case Diagram.

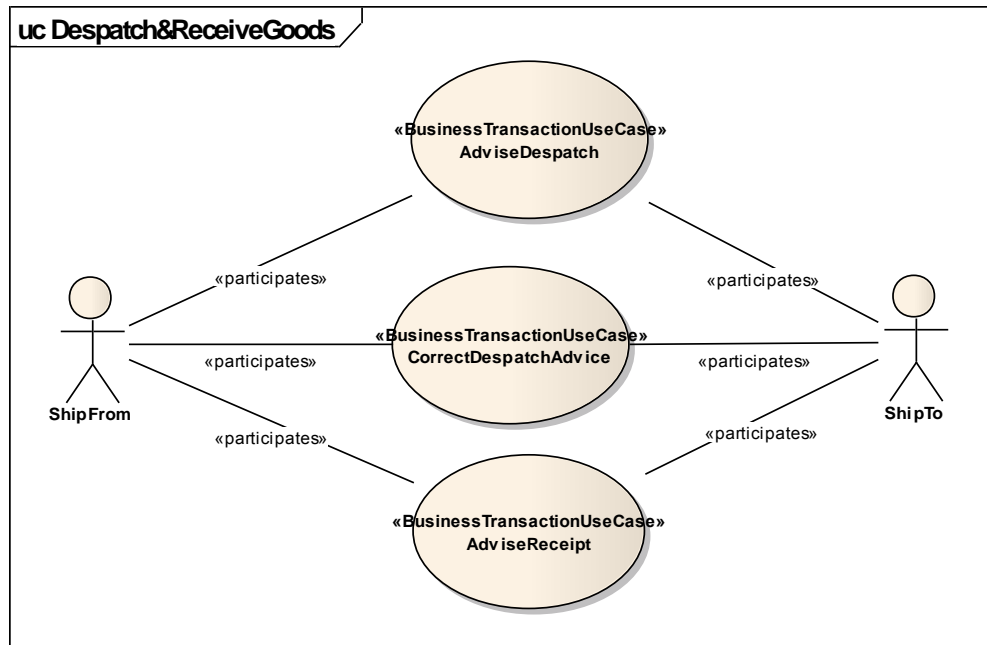



Figure 4-2 Scope of the despatch and receive process

The despatch and receive process covers the physical delivery of goods from one physical site to another according to agreements between the supplier and customer in order to fulfill a delivery contract.

The process requires an existing commercial contract between a customer buyer and a supplier seller. This contract can be established in several ways, as spot order, call off order, if necessary further detailed in a delivery instruction etc. Prior to the delivery, the customer and the supplier must also agree upon the delivery conditions and the way the transportation of goods is to be organised.

 **Note:** Note: Ship From may be the supplier (or one of supplier's subsidiaries) but not necessarily. Neither has the Ship To to be the Customer of the Goods. Therefore neither the term Supplier nor Customer is applicable to describe this partner. An analogous situation applies to Ship To. For instance, as part of a shipping process, the Goods may be sent to a Logistics Service Provider (LSP) e.g. Packing or Consolidation company. In this case the Ship To Party is the LSP. When the Goods have been Re-packed then the Ship From Party will be the LSP.

In the Despatch and Receive process it is foreseen to transmit information between the Ship From and the Ship To concerning:

- The shipment and the consigned goods despatched by the Ship From.
- If necessary, corrected details of a shipment and/or the consigned goods despatched by the Ship From..
- The receipt of the shipment and the consigned goods by the Ship To.

The Despatch and Receive process covers the way in which information is provided on the despatch of goods and on the receipt of goods.

Providing information to the Ship To of the despatch of goods at (or near to) the moment of departure, allows the Ship To to prepare for the reception of the goods. Providing information about the reception

of the goods allows the Ship From to check the correct arrival of the despatched goods and the information can be used as a trigger to send an invoice to the customer.



Note: The structure of the Despatch Advice should be very similar to the Invoice because in integrated systems the workflow will create an Invoice from this data or both documents will be derived from the same source. The focus of this document is on logistics data and so will provide information for packaging and stock control. Of course an Invoice may also be sufficient, as in the case of Point-Of-Sale systems, however a Despatch Advice is more explicit and indicates the actual movement and may also be required where the pricing information is either not available or is sensitive.

Information exchanged to inform the Ship To about the goods despatched may be structured as described below:

- Item based, giving the details of a consignment from the point of view of the goods despatched
- Package based, giving the details of a consignment from the point of view of the package used for the transportation, i.e. the handling units and the package units within which the goods are despatched.
- A combination of both approaches is possible.

In certain circumstances, e.g. because of transportation incidents, the Ship From may need to correct or cancel the despatch and inform the Ship To accordingly.

Once the Ship To has received the goods (or units), he will check them against the goods (or units) advised in the despatch information. The Ship To may then send to the Ship From, a confirmation of the reception of the goods (or units) and, if applicable, a notification of any discrepancies.

4.1.1. Business Process Flow

Ship From prepares shipment according to previously received instructions or in agreement with terms of delivery as specified in an order. Parallel to the preparation of the physical shipment all necessary data for an electronic Despatch Advice message is collected and compiled. The message is being sent from Ship From to Ship To.

In the event of changes in the shipment after the transmission of the despatch advice the Ship From compiles a Despatch Advice correction message and sends it to Ship To.

After receiving and – if necessary – inspection of the goods the Ship To creates an electronic Receiving Advice message. This message confirms the received goods and their quantity. It may contain statements concerning the conditions of received goods and their compliance with the order or otherwise agreed quality standards.

The Activities involved in the Despatch and Advice processes are shown in figure 4-3 together with the states of the “Delivery” Business Entity that are changed by the processes.

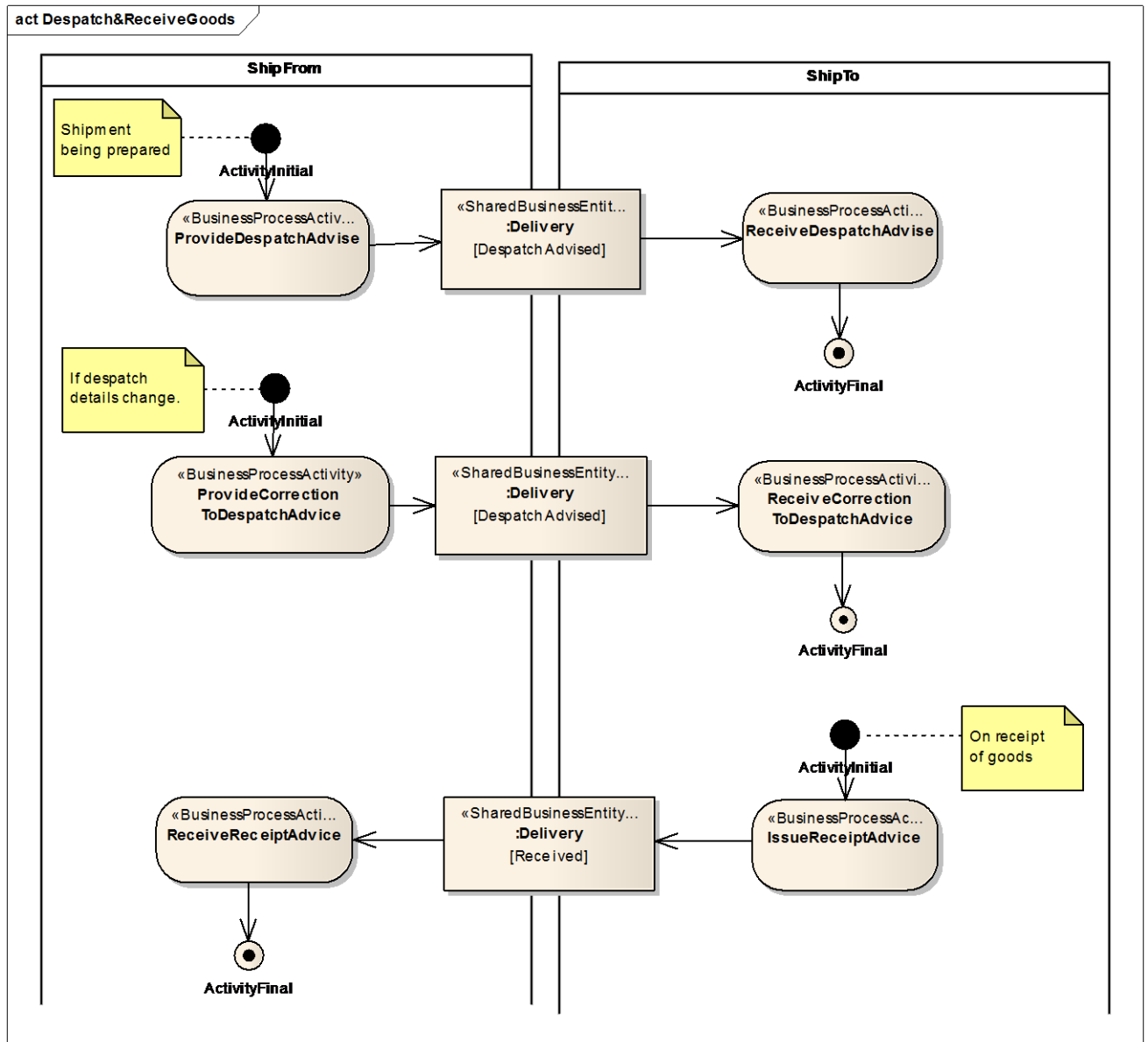


Figure 4-3 Business Process Activity Diagram

The states that the Delivery Business Entity may assume as a result of the Despatch and Receive business process are shown in the Entity Life Cycle diagram figure 4-4 .

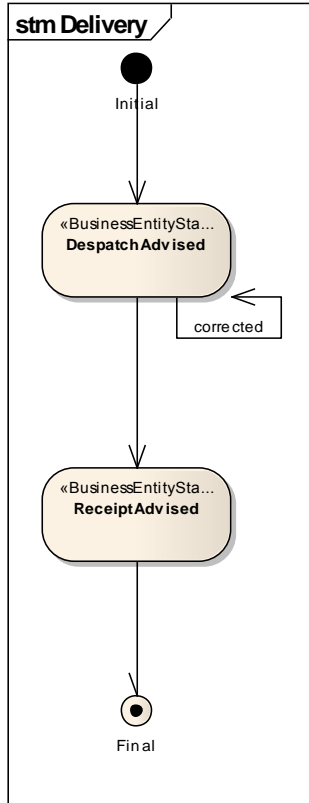


Figure 4-4 Entity Life Cycle diagram

4.1.2. Business Collaboration

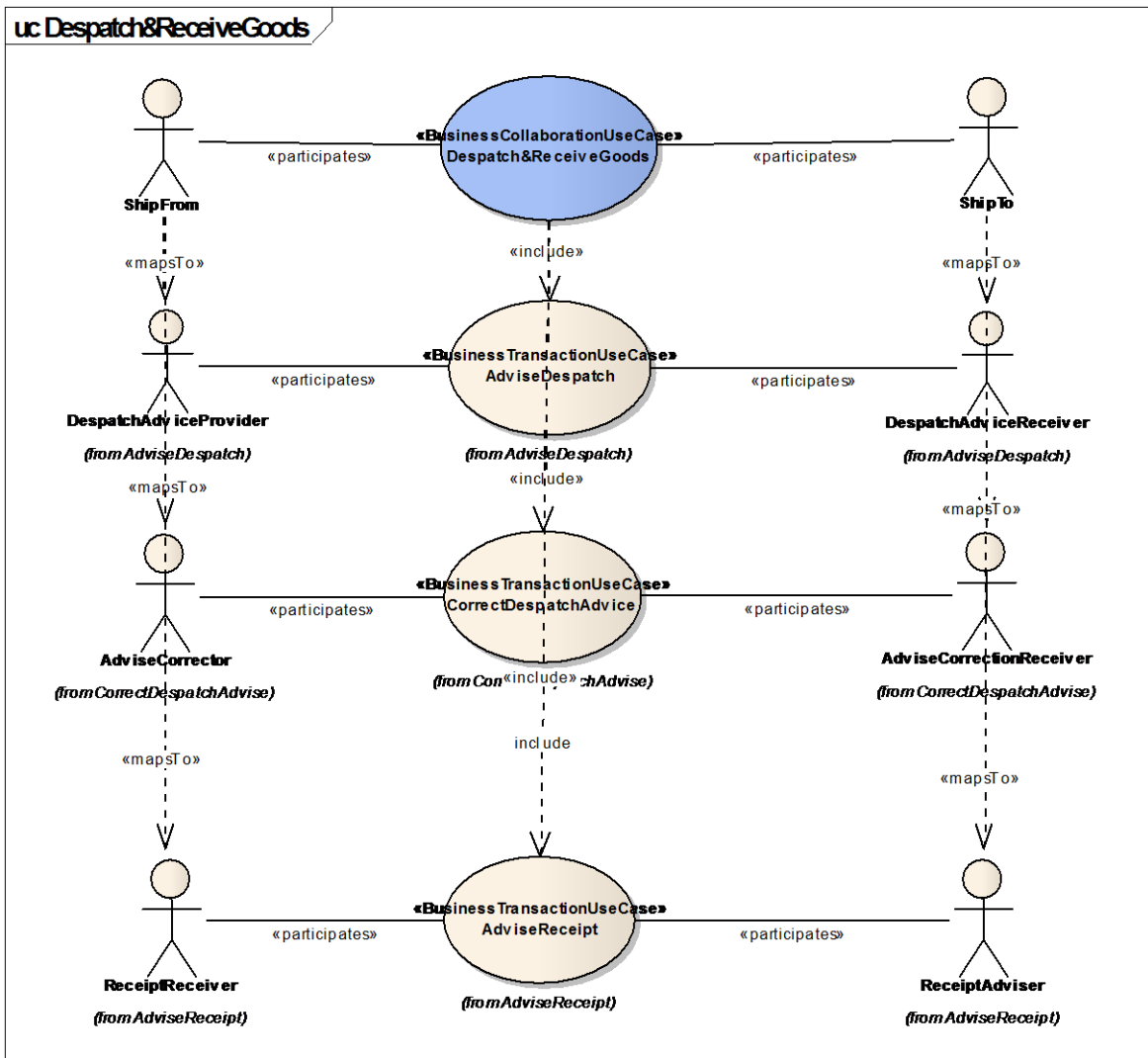


Figure 4-5 Business Collaboration Use Case Diagram

The Business Collaboration diagram figure 4-5 (above) shows the three transactions that make up the Despatch and Receive process. It also links the authorised roles from each transaction to the Business Partner Types (Ship From and Ship To). The logical order in which these transactions may occur is shown in the Business Collaboration Protocol diagram figure 4-6 (below). The Use Case Diagrams and description of the three business transactions are shown in Section 4-3

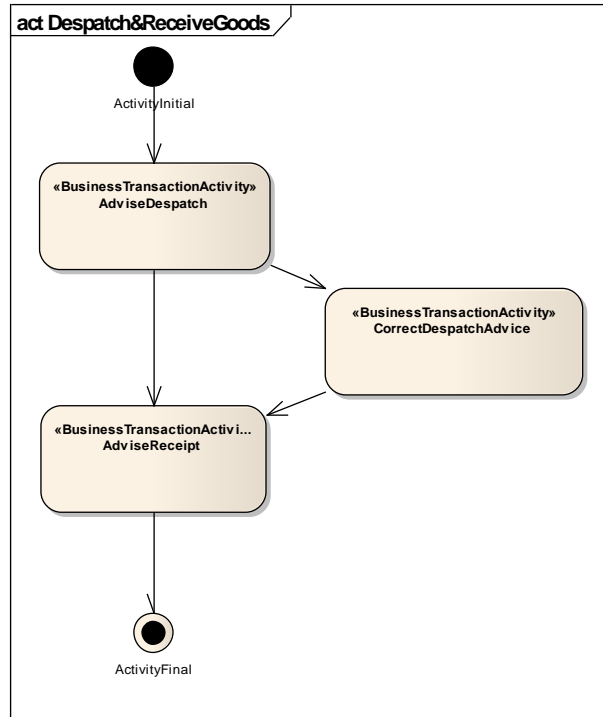


Figure 4-6 Business Collaboration Protocol - Activity Diagram

5. Business Requirements

5.1. Information Flow Definition

5.1.1. Advise Despatch (Business Transaction)

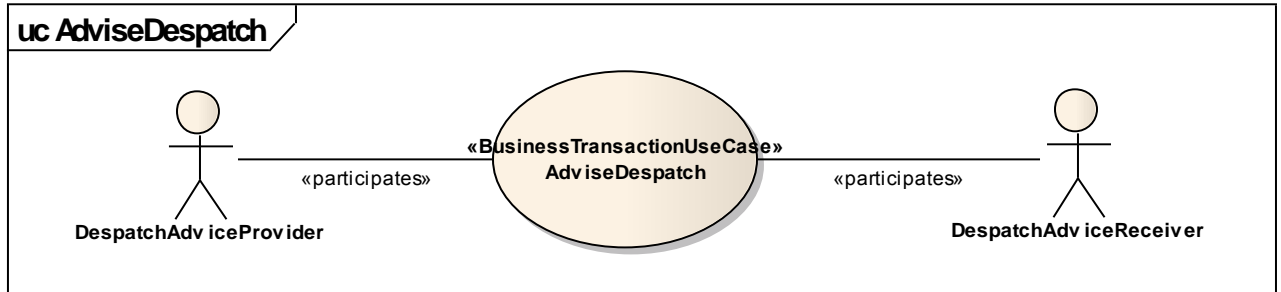


Figure 5-1 Business Transaction Use Case Diagram

Table 5-1 Business Transaction Use Case Description

Identifier	Advise Despatch
Business Message Type	Despatch Advice
Description	Once the goods are ready to leave (or have just left) the ship from location the Ship From sends a despatch advice to the Ship To to inform him about the despatch. Once the Ship To has received the despatch advice, the process ends.
Partner Types	Ship From, Ship To
Authorized Roles	Despatch Advice Provider, Despatch Advice Receiver
Legal Implications	In certain cases (such as Ex-works terms) the customer may have taken responsibility for the custody of the goods when the Despatch Advice has been sent. This may also effect ownership.
Initial/Terminal Events	<ul style="list-style-type: none"> ▪ Initial: the goods are ready to leave (or have just left) the ship from location. ▪ Terminal: the Ship To has received the despatch advice (and can prepare for reception of the goods)
Scope	Information exchange between Ship From and Ship To concerning the despatch of goods.
Boundary	
Constraints	

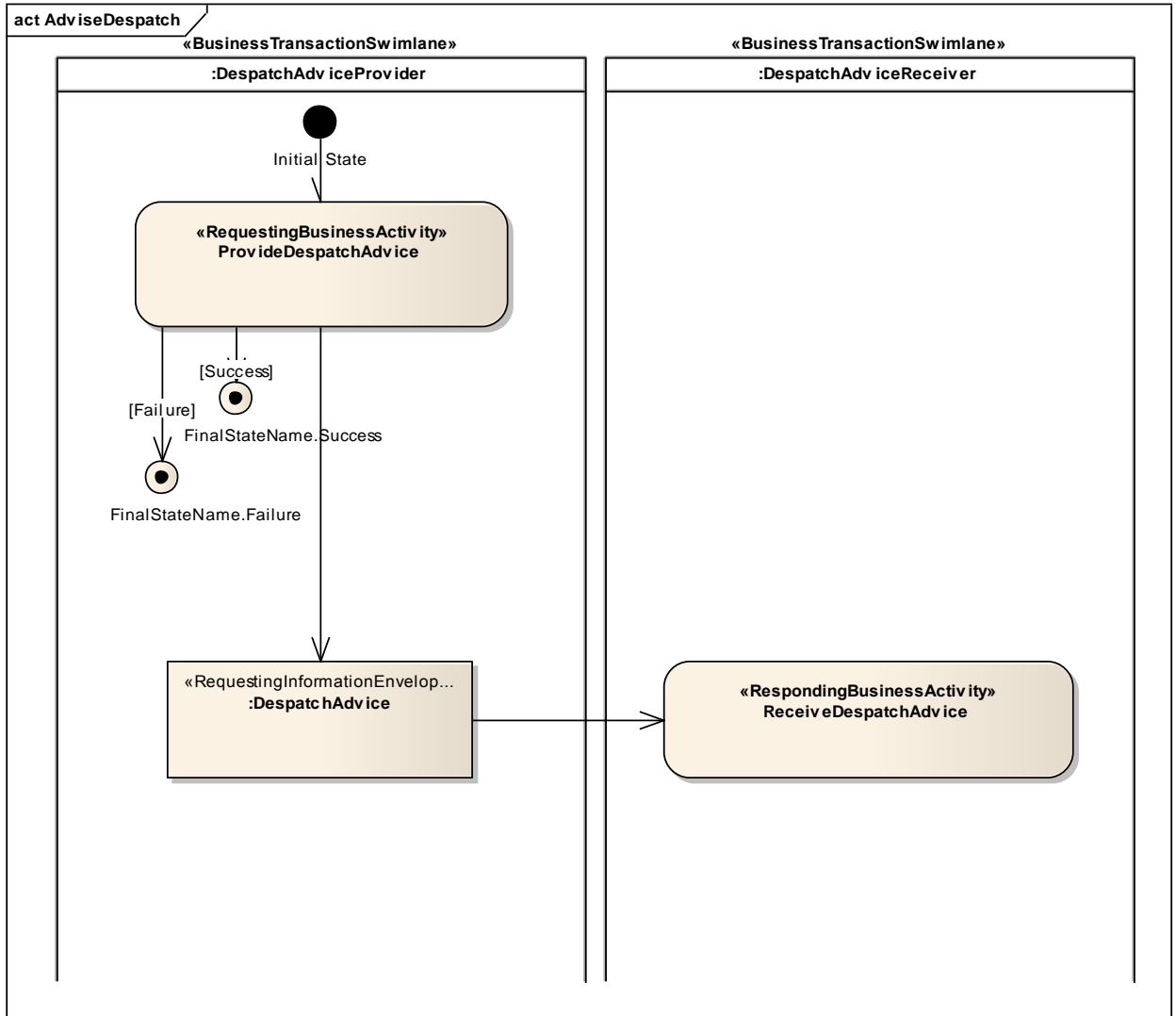


Figure 5-2 Business Transaction Activity Diagram

5.1.2. Correct Despatch Advice (Business Transaction)

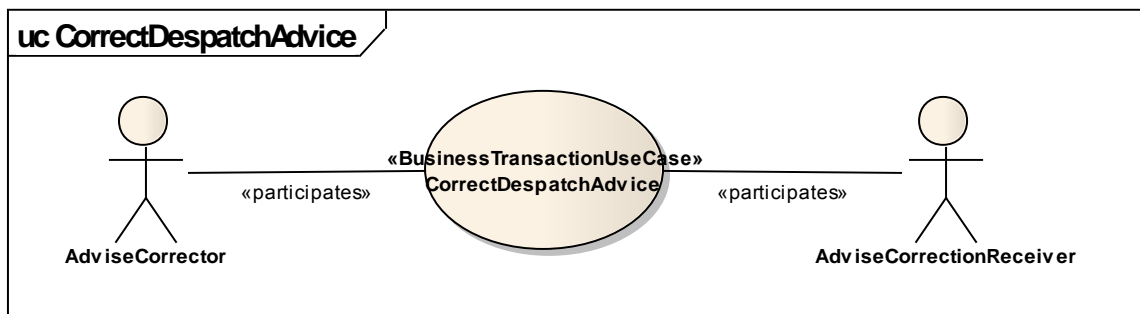


Figure 5-3 Business Transaction Use Case Diagram

Table 5-2 Business Transaction Use Case Description

Identifier	Correct Despatch Advice
Business Message Type	Despatch Advice
Description	Once the goods have left the ship from location and a change occurs in the delivery or the delivery is cancelled, the Ship To is informed.
Partner Types	Ship From, Ship To
Authorized Roles	Advice Corrector, Advice Correction Receiver
Legal Implications	In certain cases (such as Ex-works terms) the Ship To may have taken responsibility for the custody of the goods when the Despatch Advice was sent.
Initial/Terminal Events	<ul style="list-style-type: none"> ■ Initial: the shipment details are changed or the shipment is cancelled. ■ Terminal: the ShipTo has received the corrected despatch advice.
Scope	Information exchange between Ship From and Ship To concerning the despatch of goods.
Boundary	
Constraints	

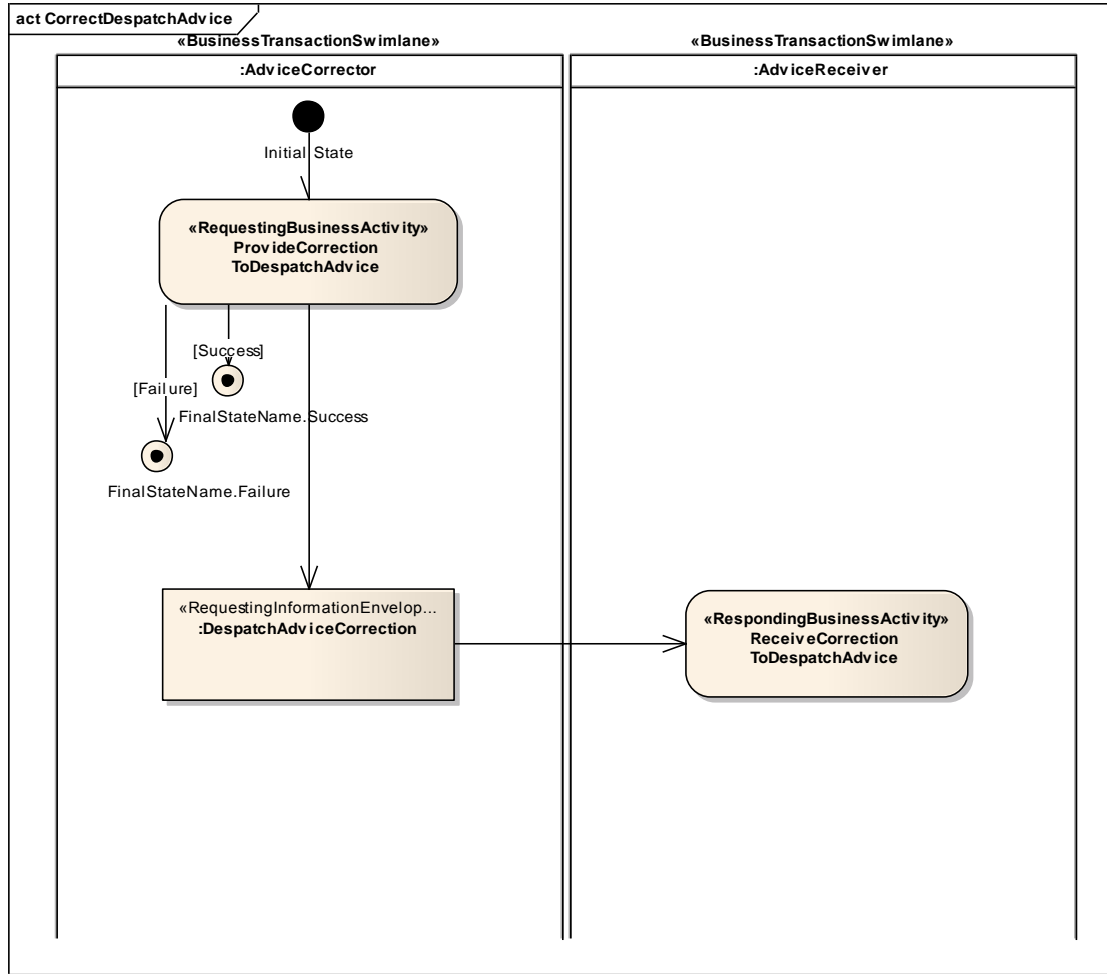


Figure 5-4 Business Transaction Activity Diagram

5.1.3. Advise Receipt (Business Transaction)

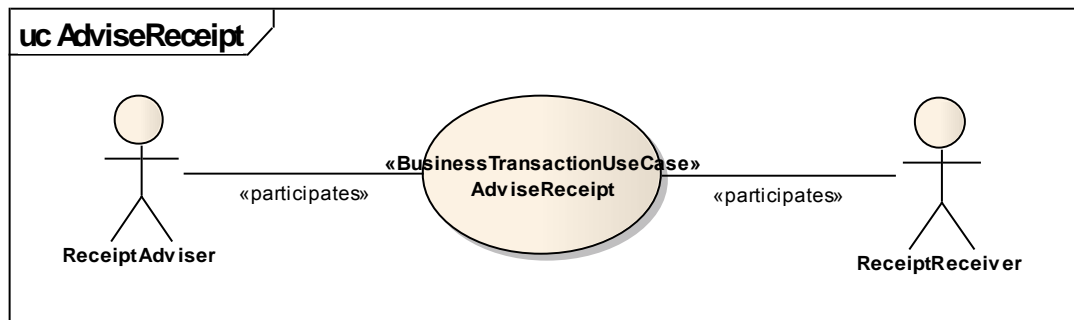


Figure 5-5 Business Transaction Use Case Diagram

Table 5-3 Business Transaction Use Case Description

Business Transaction Use Case Description	
Identifier	Advise Receipt
Business Message Type	Receiving Advice
Description	The Ship To prepares and sends a receiving advice to the Ship From to confirm reception of the goods and, if applicable, notify any discrepancies between the goods received and those announced in the despatch advice. Once the Ship From has received the receiving advice, the process ends.
Partner Types	Ship From, Ship To
Authorized Roles	Receipt Adviser, Receipt Receiver
Legal Implications	Ship To has taken responsibility for the custody of the goods. This may have effects on ownership or payment. The receiving advice document has an important legal value in the commercial process.
Initial/Terminal Events	<ul style="list-style-type: none"> ■ Initial: the goods have been received by the Ship To ■ Terminal: the Ship From has been informed about the reception of goods delivered (and, if applicable, any discrepancies).
Scope	To report on the goods received by the Ship To.
Boundary	
Constraints	

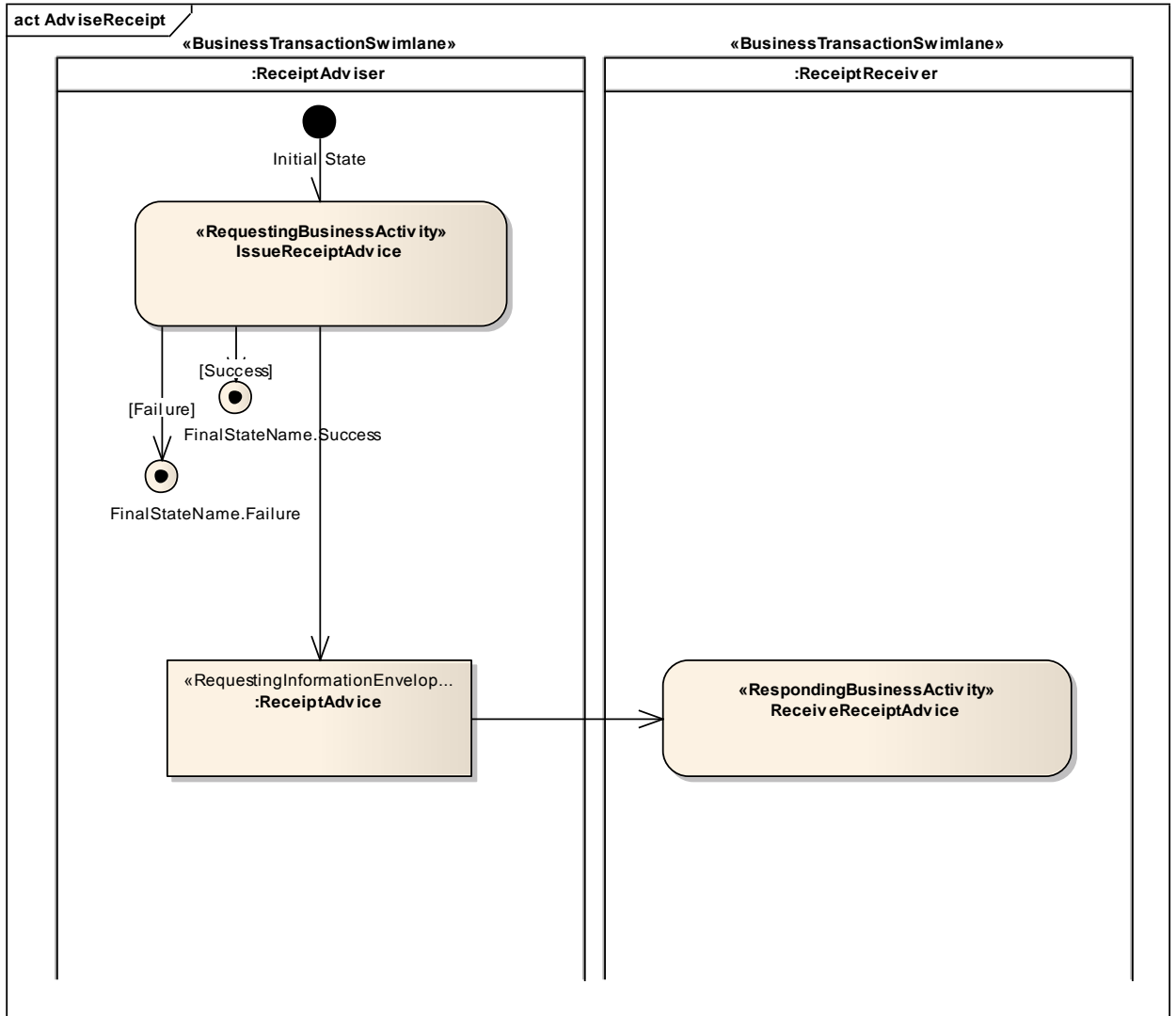


Figure 5-6 Business Transaction Activity Diagram

5.2. Information Model Definition

5.2.1. Business Entity Relationships

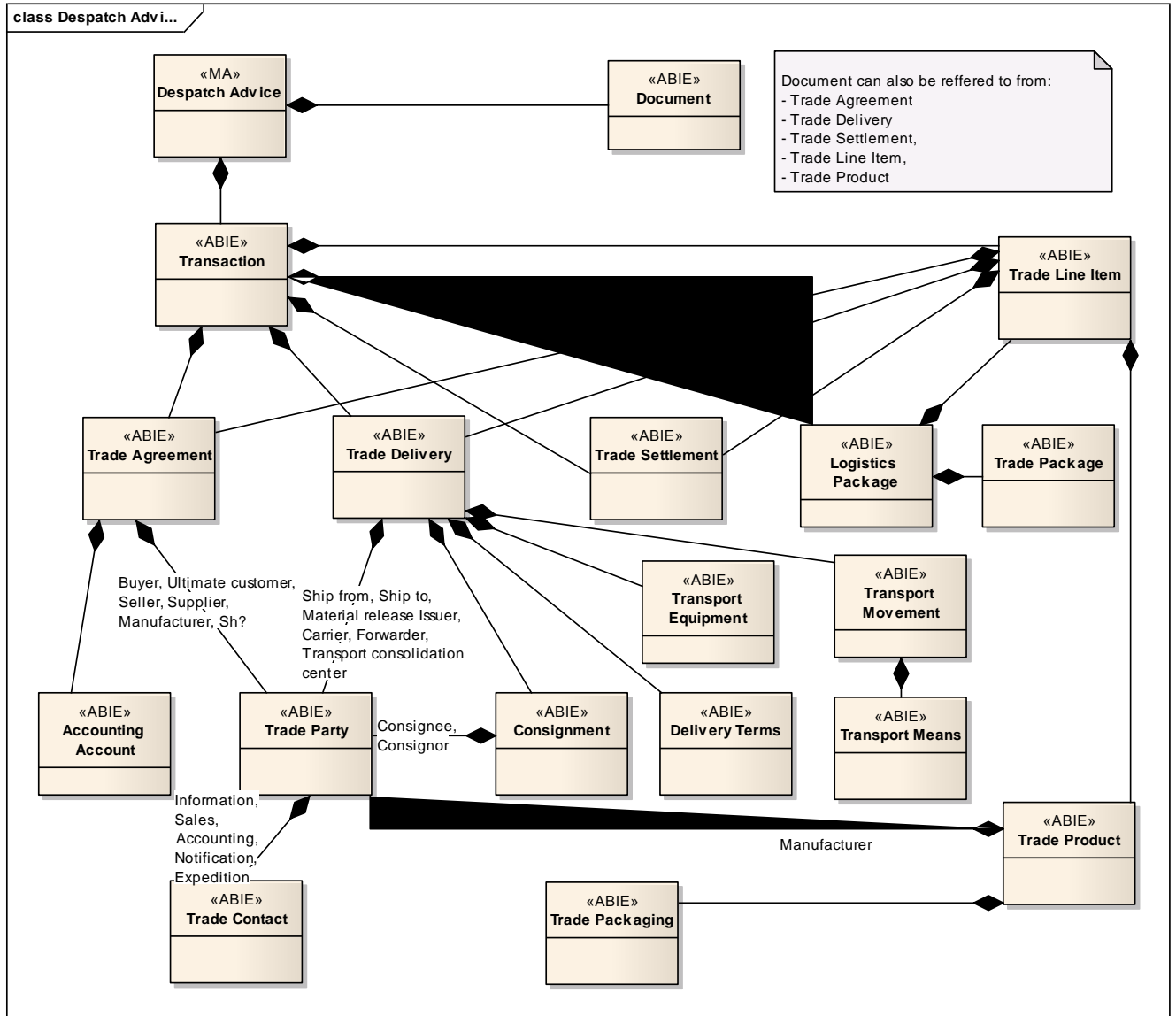


Figure 5-7 Business Entity Class Diagram – Despatch Advice

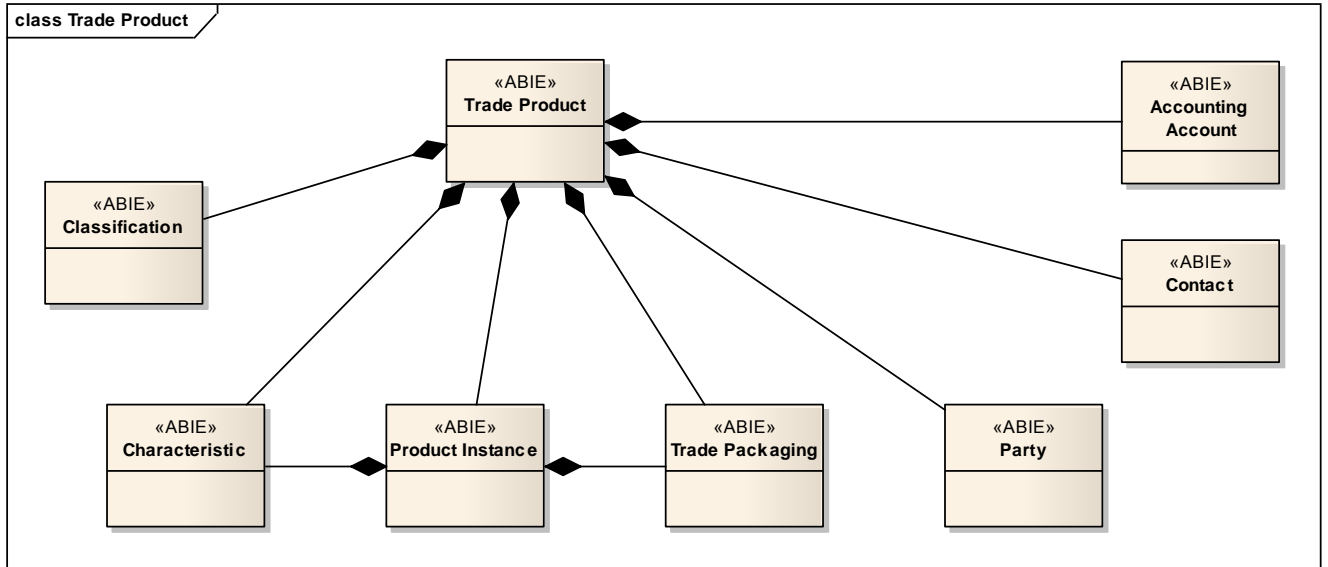


Figure 5-8 Business Entity Class Diagram – Trade Product

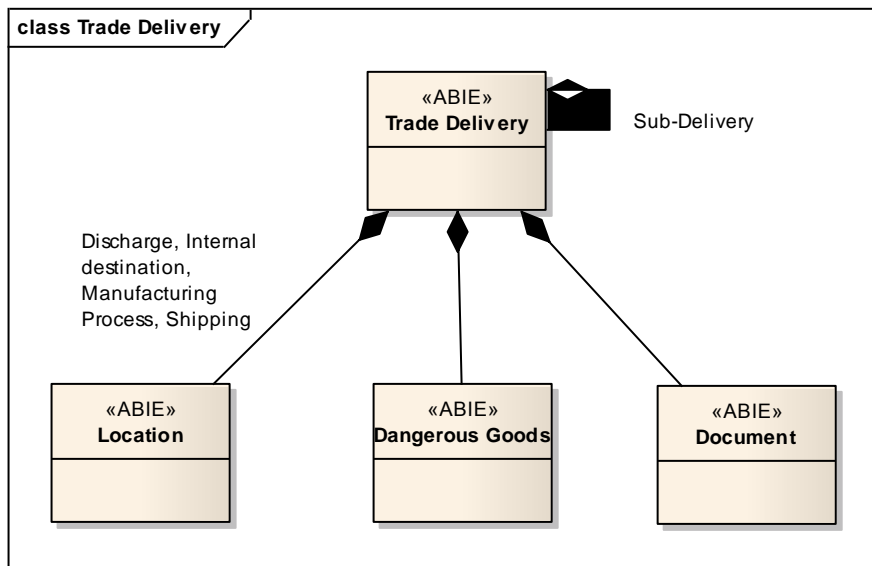


Figure 5-9 Business Entity Class Diagram – Trade Delivery

5.2.2. Business Documents

5.2.2.1. Despatch Advice (Business Document)

Table 5-4 Business Requirements List (alternate format, used to convert existing BRS requirements)

Switch to new format to be done !

UID	Crđ	Short Name	Business Requirement	Rationale / Example / Mapping Notes / Status
CID	BRS ID (Cross Industry Despatch)			
DES	Business Document ID			
	The following lines translate the data mode (class diagram) into a more hierarchical representation of the business requirements. They are followed by further detailed description of the required content.			
	Despatch -> Exchanged Document			
	Despatch -> Transaction			
	Transaction -> Trade Agreement			
	Transaction -> Trade Agreement -> Party			
	Transaction -> Trade Agreement -> Party -> Contact			
	Transaction -> Trade Agreement -> Document Reference			
	Transaction -> Trade Agreement -> Accounting Account			
	Transaction -> Trade Delivery			
	Transaction -> Trade Delivery -> Trade Party			
	Transaction -> Trade Delivery -> Trade Party -> Trade Contact			
	Transaction -> Trade Delivery -> Delivery Terms			
	Transaction -> Trade Delivery -> Consignment			
	Transaction -> Trade Delivery -> Consignment -> Trade Party			
	Transaction -> Trade Delivery -> Transport Movement			
	Transaction -> Trade Delivery -> Transport Movement -> Transport Means			
	Transaction -> Trade Delivery -> Transport Equipment			
	Transaction -> Trade Settlement			
	Transaction -> Transaction Hierarchy			
	Transaction Hierarchy -> Logistics Package			
	Transaction Hierarchy -> Logistics Package -> Reference Document			
	Transaction Hierarchy -> Logistics Package -> Trade Packaging			
	Transaction Hierarchy -> Trade Line Item			
	Transaction Hierarchy -> Trade Line Item -> Trade Product			
	Transaction Hierarchy -> Trade Line Item -> Trade Product -> Classification			
	Transaction Hierarchy -> Trade Line Item -> Trade Product -> Characteristic			
	Transaction Hierarchy -> Trade Line Item -> Trade Product -> Party			

UID	Crđ	Short Name	Business Requirement	Rationale / Example / Mapping Notes / Status
		Transaction Hierarchy -> Trade Line Item -> Trade Product -> Contact		
		Transaction Hierarchy -> Trade Line Item -> Trade Product -> Accounting Account		
		Transaction Hierarchy -> Trade Line Item -> Trade Product -> Product Instance		
		Transaction Hierarchy -> Trade Line Item -> Trade Product -> Product Instance -> Characteristic		
		Transaction Hierarchy -> Trade Line Item -> Trade Product -> Product Instance -> Trade Packaging		
		Transaction Hierarchy -> Trade Line Item -> Trade Product -> Trade Packaging		
		Transaction Hierarchy -> Trade Line Item -> Trade Delivery		
		Transaction Hierarchy -> Trade Line Item -> Trade Delivery -> Location		
		Transaction Hierarchy -> Trade Line Item -> Trade Delivery -> Sub-Delivery		
		Transaction Hierarchy -> Trade Line Item -> Trade Delivery -> Reference Document		
		Transaction Hierarchy -> Trade Line Item -> Trade Delivery -> Dangerous Goods		
		Transaction Hierarchy -> Trade Line Item -> Trade Agreement		
		Despatch -> Exchanged Document		
CID-001	1..1	Document Identifier	Unique identifier of the document	
CID-002	1	Document date	Issuing date of the document.	
CID-003	0..1	Despatch advice type code	The code specifying the despatch advice type, e.g. despatch advice, summarization despatch advice, returns advice, ... (based on DE1001)	
CID-004	0..1	Status code	A code specifying a status of a document as original, canceled, changed, etc.	
CID-005	0..1	Requested response	A code indicating the response requirements, e.g. acknowledgement, receiving advice etc.	
CID-006	0..1	Scenario	Describes the business scenario or domain, such as production material, non-production material, aftermarket, etc.	
CID-007	0..1	Document name	A name, expressed as text, for this specific document.	
CID-008	0..1	Document Purpose	The purpose, expressed as code, of this document.	
CID-009	0..1	Document Information	The purpose, expressed in text, of this document.	
CID-010	0..1	Copy indicator	The indication of whether or not the document is a copy.	-

UID	Crđ	Short Name	Business Requirement	Rationale / Example / Mapping Notes / Status
CID-011	0..n	Note	The free text information related to the complete document.	
CID-012	0..1	Document Control Requirement	The indication of whether or not a document has specific control requirements.	Like confidentiality, archiving requirements etc.
CID-013	0..1	Binary Attachment	A binary object that is attached or otherwise appended to this document.	e.g. if not sent in structured format
CID-014	0..1	Document Issuer	The party that issues this document.	
Despatch -> Trade Transaction				
Trade Transaction -> Trade Agreement				
CID-020	0..1	Material flow type code	A code indicating the type of material flow: with change of ownership or without change of ownership.	Without change of ownership: material is shipped to a destination, but the supplier cannot issue an invoice. This is usually the fact when invoicing based on actual consumption is agreed between the partners.
Transaction -> Trade Agreement -> Party				
CID-021	0..1	Supplier	The entity contains the details of the supplier.	
CID-022	0..1	Customer	The entity contains the details of the customer.	
CID-023	0..1	Seller	The entity contains the details of the seller.	
CID-024	0..1	Ultimate customer		
CID-025	0..1	Grouping centre	Transport consolidation service	
CID-026	0..*	Customs agent	The entity contains the details of the customs agent.	
Transaction -> Trade Agreement -> Party -> Contact				
CID-027	0..1	Accounting contact		
CID-030	0..1	Sales Contact		
CID-031	0..1	Expedition Contact		
CID-032	0..1	Information contact		
CID-033	0..1	Notification contact		
Transaction -> Trade Agreement -> Trade Document (Reference)				

UID	Crđ	Short Name	Business Requirement	Rationale / Example / Mapping Notes / Status
CID-034	0..1	Purchase Order	Reference to a Purchase Order	
CID-035	0..1	Contract	Reference to a Contract.	
CID-036	0..*	Additional Document Reference	Reference to an additional document.	
Transaction -> Trade Agreement -> Accounting Account				
CID-037	0..*	Customer account	The entity contains information related to the Customer account where to record the debit or credit accounting amount, the code defining the type of account (e.g. general, secondary, cost accounting, budget, etc.)..	
CID-038	0..*	Supplier account	The entity contains information related to the Supplier account where to record the debit or credit accounting amount, the code defining the type of account (e.g. general, secondary, cost accounting, budget, etc.).	
Transaction -> Trade Delivery				
CID-050	0..1	Material release issuer	The dispatcher of the Customer / ship-to which actually releases scheduled shipments i.e. turns a forecast into a firm instruction.	
CID-051	0..1	Country of destination identification	The code of the country of destination of the actual despatch as specified in ISO 3166 –1993 (2 alpha positions).	
CID-052	0..1	Country of destination	The name of the country of destination.	
CID-053	0..1	Final country of destination identification	The code of the country of final destination of the goods as specified in ISO 3166 – 1993 (2 alpha positions).	
CID-054	0..1	Final country of destination	The name of the country of final destination.	
CID-055	0..1	Requested arrival date	The date the customer asks for goods arrival	
CID-056	0..1	Planned Arrival Date Time	Date and/or time when the shipper of the goods expects the arrival at ship-to location.	

UID	Crđ	Short Name	Business Requirement	Rationale / Example / Mapping Notes / Status
CID-057	0..1	Planned Earliest Arrival Date Time	The estimated beginning of the time frame in which the goods will be delivered at the ship to location.	
CID-058	0..1	Planned Latest Arrival Date Time	The estimated end of the time frame in which the goods will be delivered at the ship to location.	
CID-059	0..1	Planned Loading Date Time	The date and time the goods are loaded.	
CID-060	0..1	Despatch Date Time	The date and time the goods are to be shipped (planned or actual).	
CID-062	0..1	Release Date Time	The date and time the goods were released by the supplier.	
CID-063	0..1	Pick-up Date Time	The date and time the goods are available for pick up..	
CID-064	0..1	Final despatch indicator	The indication that the actual despatch is the final despatch as requested by the Ship To.	
Transaction -> Trade Delivery -> Trade Party				
CID-065	0..1	Material release issuer	The dispatcher of the Customer / ship-to which actually releases scheduled shipments i.e. turns a forecast into a firm instruction.	
CID-066	0..1	Carrier	The entity contains the details of the carrier.	
CID-067	0..1	Freight forwarder	The entity contains the details of the freight forwarder.	
CID-068	1..1	Ship To	The entity contains the details of the Ship-from party.	Details see party
CID-069	1..1	Ship From	The entity contains the details of the Ship-to party.	
CID-070	0..1	Transport consolidation centre	A service provider used to consolidate transports / shipments	
Transaction -> Trade Delivery -> Trade Party -> Trade Location				
CID-071	0..1	Ship From location	Ship From location	Loading point
CID-072	0..1	Destination location	Internal destination location	e.g. production line or warehouse
CID-073	0..1	Discharge location	Discharge location	Unloading point / place of discharge
Transaction -> Trade Delivery -> Trade Party -> Trade Contact				
CID-074	0..n	Contact		

UID	Crđ	Short Name	Business Requirement	Rationale / Example / Mapping Notes / Status
Transaction -> Trade Delivery -> Delivery Terms				
CID-075	0..1	Delivery terms	The entity contains the details of the delivery terms and the place if relevant for the delivery terms.	
Transaction -> Trade Delivery -> Reference Document				
CID-076	0..1	Warehouse packing list	Reference to the physical document that accompanies the goods (packing list)	
CID-077	0..1	Bill of Lading	Reference to a document which evidences a contract of carriage and the taking over or loading of goods by the carrier, and by which the carrier undertakes to deliver the goods against surrender of the document.	
CID-078	0..1	Transport Document Reference	Reference to the physical document	
CID-079	0..*	Additional Document Reference	Reference to an additional document.	
CID-080	0..n	Note	Additional notes regarding the delivery	
Transaction -> Trade Delivery -> Consignment				
CID-081	0..1	Gross weight consignment	The total gross weight of the consignment.	
CID-082	0..1	Net weight consignment	The total net weight of the consignment.	
CID-083	0..1	Number of packages	The total number of packages (bundles) in the consignment.	
CID-084	0..1	Goods value	The total value of the goods of the consignment.	
CID-085	0..1	Packing cost	The total packing costs which are considered as being for customs purposes.	
CID-086	0..1	Consignment volume	The volume of a consignment	
CID-087	0..1	Loading meters	The loading meters of a consignment e.g. on a truck	
Transaction -> Trade Delivery -> Consignment -> Trade Party				
CID-088	0..1	Consignor	The entity contains the details of the consignor	
CID-089	0..1	Consignee	The entity contains the details of the consignee	
Transaction -> Trade Delivery -> Transport Movement				

UID	Crđ	Short Name	Business Requirement	Rationale / Example / Mapping Notes / Status
CID-090	0..1	Transport stage		
CID-091	0..1	Transport mode	The mode of transport expressed as code	
CID-092	0..1	Conveyance reference	A unique reference number assigned by the ship-from to the shipment	
CID-093	0..1	Excess transport reason	The reason for excess transport effort	
CID-094	0..1	Excess transport Responsibility	The responsibility for excess transport	
CID-095	0..1	Method of payment	The method of payment for the transport or excess transport.	
Transaction -> Trade Delivery -> Transport Movement -> Transport Means				
CID-096	0..1	Transport means ID	The ID of the transport means, e.g. license plate of a truck	
CID-097	0..1	Transport means description	The description of the transport means as code or text	
CID-098	0..1	Type of ownership code	Specifies the owner of the transport means	Buyer, Seller, Carrier, 3 rd Party
CID-099	0..1	Capacity usage	To specify the capacity usage of a transport means	
Transaction -> Trade Delivery -> Transport Equipment				
CID-100	0..1	Equipment ID	The Id of the equipment	
CID-101	0..1	Equipment type code	The type of the equipment	e.g. 40 ft container
CID-102	0..1	Equipment metrics	Length, width, height, net weight, gross weight, tare.	
Transaction -> Trade Settlement				
CID-150	0..n	Logistics service Charge		
Transaction -> Transaction Hierarchy				
Transaction hierarchy is used to identify the hierarchical structure of components in the transaction. In EDIFACT, the segment group triggered with CPS is used for that. By these means it is possible to differentiate between package driven transactions and product driven transactions as well as inner-to-outer or outer-to-inner package logic. All these different ways are implemented in the industry				
CID-151	1	Line ID	The line identifier	
CID-152	0..1	Parent Line ID	The identifier of the hierarchical next top line	
Transaction Hierarchy -> Logistics Package				

UID	Crđ	Short Name	Business Requirement	Rationale / Example / Mapping Notes / Status
CID-153	0..1	Type code	The type of package, coded	
CID-154	0..1	Number of packages / transport units	Total number of transport units of this type in the shipment	
CID-155	0..1	Packaging Label Type	To identify the type of label	
CID-156	0..1	Packaging Label Content	The label content	1 per individual package, can be specified also as list or as range
	0..n	Shipping Marks	The shipping marks	
CID-157	0..1	Load bearing capacity	Maximum weight of the load	
CID-158	0..1	Maximum stackability quantity	The number of TU to be stacked on top of each other	
CID-159	0..1	Maximum stacking weight	Maximum stacking weight on top of the TU	
CID-160	0..1	Package level code	Outer, intermediate, no package hierarchy (simplified transport unit)	
CID-161	0..n	Dimension	Length, width, height, volume	
CID-162	0..1	Gross weight	Weight including package	
CID-163	0..1	Net weight	Weight of the load without package	
CID-164		Tare weight	Weight of the package material	
CID-165	0..1	Packages per TU	Number of contained packages in a transport unit	
CID-166	0..1	Returnable container indicator	To indicate that the TU is a returnable container (as opposite to one way packages)	
CID-167	0..n	Packaging aid	To specify packaging aids used at this package level, Type and quantity	
CID-168	0..1	Batch ID	The batch ID of the parts in this package	In the automotive industry this information is given on package level and not on product instance level.
CID-169	0..1	Best before / expiry date	The expiry date of the parts in this package.	In the automotive industry this information is given on package level and not on product instance level.

UID	Crđ	Short Name	Business Requirement	Rationale / Example / Mapping Notes / Status
CID-170	0..1	Requested delivery date		Necessary if the message is used for empty container scenarios, i.e. the despatch is for empty, reusable containers (customer to supplier)
CID-171	0..1	Requested shipment date		Necessary if the message is used for empty container scenarios, i.e. the despatch is for empty, reusable containers (customer to supplier)
Transaction Hierarchy -> Logistics Package -> Reference Document				
CID-172	0..n	Despatch Note Reference	Reference to a despatch note (paper document going along with the goods).	
Transaction Hierarchy -> Logistics Package -> Trade Packaging				
CID-173	0..n	(Contained) Package ID	Identifier of the packages contained in the TU	Either as list or as range
Transaction Hierarchy -> Trade Line Item				
Trade Line Item -> Trade Product				
CID-200	0..n	Product identifier	The product identification of the customer, supplier, manufacturer etc..	
CID-201	0..n	Product description	Short or long description of the product	
CID-202	0..1	Originally Requested Product	The trade item identification of the goods that were ordered or planned to be delivered, but for which a substitute has been delivered.	
CID-203	0..1	Technical status	Drawing revision or engineering change	
Trade Line Item -> Trade Product -> Classification				
CID-204	0..n	Product classification	To apply further classification properties to the product, such as quality control requirements or conformance, safety regulations. Etc.	If it is the same for all product instances
Trade Line Item -> Trade Product -> Characteristic				
CID-205	0..n	Material characteristic	Characteristic properties of the material	If it is the same for all product instances
CID-206	0..n	Product characteristic	Characteristic properties of the product	If it is the same for all product instances
Trade Line Item -> Trade Product -> Party				
CID-207	0..1	Manufacturer	The manufacturer of the product	If it is the same for all product instances

UID	Crđ	Short Name	Business Requirement	Rationale / Example / Mapping Notes / Status
Trade Line Item -> Trade Product -> Contact				
CID-208	0..n	Contact	Product related contact information: purchasing, schedule, delivery , inspection contact	Used in Japanese automotive industry
Trade Line Item -> Trade Product -> Accounting Account				
CID-209	0..*	Customer account	The entity contains information related to the Customer account where to record the debit or credit accounting amount, the code defining the type of account (e.g. general, secondary, cost accounting, budget, etc.)..	
CID-210	0..*	Supplier account	The entity contains information related to the Supplier account where to record the debit or credit accounting amount, the code defining the type of account (e.g. general, secondary, cost accounting, budget, etc.)..	
Trade Line Item -> Trade Product -> Product Instance				
CID-220	0..1	Batch ID		
CID-221	0..n	Serial ID	Serial ID of a product itself (serial number, engine number) or of the assembly the product is designed/delivered for (vehicle ID)	
CID-222	0..1	Best before / expiry date		
Trade Line Item -> Trade Product -> Product Instance -> Characteristic				
CID-223	0..n	Material characteristic	Characteristic properties of the material	If it is different for product instances
CID-224	0..n	Product characteristic	Characteristic properties of the product	If it is different for product instances
Transaction Hierarchy -> Trade Line Item -> Trade Product -> Product Instance -> Trade Packaging				
Trade Line Item -> Trade Product -> Trade Packaging				
CID-240	0..1	Type code	Type of the package	
CID-241	0..1	Number of packages	Total number of packages of this type	

UID	Crđ	Short Name	Business Requirement	Rationale / Example / Mapping Notes / Status
CID-242	0..1	Package level code	Outer, intermediate, no package hierarchy (simplified transport unit)	
CID-243	0..n	Dimension	Length, width, height	
CID-244	0..1	Gross weight	Weight with package	
CID-245	0..1	Net weight	Weight without package	
CID-246	0..1	Quantity per package	Number of product items per package	
CID-247	0..1	Maximum stackable quantity	Number of packages stackable on top of each other without causing a damage	
CID-248	0..1	Outer package reference	To reference the outer package, e.g. the transport unit in which the package is contained in	
CID-249	0..1	Returnable container indicator	To indicate that the TU is a returnable container (as opposite to one way packages)	
CID-250	0..n	Packaging aid	To specify packaging aids used at this package level, Type and quantity, Terms and conditions	
CID-251	0..1	Batch ID	The batch ID of the parts in this package	In the automotive industry this information is given on package level and not on product instance level.
CID-252	0..1	Best before / expiry date	The expiry date of the parts in this package.	In the automotive industry this information is given on package level and not on product instance level.
		LABEL		One per package, can be given also as list or range
CID-253	0..1	Packaging Label Type	The type of marking	E.g. Sellers serial number, buyers package ID, KANBAN number etc.
CID-254	0..1	Packaging Label ID	The label content / ID	
		ALTERNATIVE SERVICE PART PACKAGE		Is used if a despatch contains items for the ongoing production AND parts for service (retail).
CID-255	0..1	Package Type		

UID	Crđ	Short Name	Business Requirement	Rationale / Example / Mapping Notes / Status
CID-256	0..1	Package ID		
CID-257	0..1	Quantity per pack		
Trade Line Item -> Trade Delivery				
CID-300	0..*	Despatch quantity	The quantity of the invoice line despatch by the supplier. The quantity can be expressed as a weight, a number of pieces, a length, square meters, etc.	
CID-301	0..1	Invoice quantity	The invoice quantity. Can for instance be used in case invoice unit differs from despatch unit, e.g. despatch unit is Each and invoice unit is Kilogram..	
CID-302	0..1	Requested quantity	The quantity that was ordered or planned to be delivered.	
CID-303	0..1	Free quantity	Quantity of goods which are free of charge.	
CID-304	0..1	Quantity variance	To specify any variances between what was ordered and what is ready for or has been despatched.	
CID-305	0..1	Variance Reason Code	To specify the coded reason of variances between what was ordered and what is ready for or has been despatched.	
CID-306	0..1	Variance Reason Text	To specify the reason of variances between what was ordered and what is ready for or has been despatched.	
CID-307	0..1	Gross weight	The weight of the goods including packing but excluding the carriers' equipment.	
CID-308	0..1	Net weight	The weight of the goods themselves without any packing. (Net net weight)	
CID-309	0..*	Handling instructions	The text specifying the handling instructions.	
CID-310	0..1	Origin country identification	The code of the country of origin of the goods as specified in ISO 3166 - 1993.	
CID-311	0..1	Origin country	The name of the country of origin of the goods.	

UID	Crđ	Short Name	Business Requirement	Rationale / Example / Mapping Notes / Status
CID-312	0..1	Delivery instruction type code	The type of the delivery instruction (e.g. JIT, Sequenced, KANBAN, Standard)	
CID-313	0..1	Nature of customs transaction	The nature of the delivery with respect to customs regulations	
CID-314	0..1	Requested delivery date	Originally requested delivery date (arriving at Ship To)	
CID-315	0..1	Requested shipment date	Originally requested shipment date (departing at Ship From)	
CID-316	0..1	Order date	Date of the order	
CID-317	0..1	Delivery date to ultimate customer	The delivery date to the ultimate customer.	Is used in processes where a supplier sends goods to another service provider or manufacturer in order to perform further actions with the product (e.g. coloring) before the product is being sent to the ultimate customer (e.g. OEM).
Trade Line Item -> Trade Delivery -> Location (valid for the whole delivery of that product)				
CID-318	0..1	Place of discharge	Where the goods are unloaded and the carrier discharged.	
CID-319	0..1	Internal destination	Internal destination within Ship To's premises	
CID-320	0..1	Manufacturing line / process	The manufacturing line or a specific manufacturing process at the line	
CID-321	0..1	Shipping location	Loading or pick-up location	
Trade Line Item -> Trade Delivery -> Sub-Delivery Several discharge locations for partial quantities of that product.				
CID-322	0..1	Place of discharge	Where the goods are unloaded and the carrier discharged.	If the total delivery quantity (e.g. 28 tons of concrete) is to be unloaded at several places e.g. on a large construction place
CID-323	0..1	Sub-delivery quantity	The quantity discharged at this location	
Trade Line Item -> Trade Delivery -> Reference Document				
CID-324	0..1	Customer order reference	The unique identification assigned by the customer to an order.	
CID-325	0..1	Supplier order reference	The unique identification assigned by the supplier to an order.	

UID	Crđ	Short Name	Business Requirement	Rationale / Example / Mapping Notes / Status
CID-326	0..1	Consignee order reference	The unique identification assigned by the consignee to an order.	
CID-327	0..1	Contract reference	The unique identification assigned by the issuer to a contract.	
CID-328	0..1	Customer delivery reference	The unique identification assigned by the customer to identify a specific delivery.	
CID-329	0..1	Supplier delivery reference	The unique identification assigned by the supplier to identify a specific delivery.	
CID-330	0..1	Letter of credit reference	The unique identifier assigned to a letter of credit.	
CID-331	0..1	Import license reference	The unique identifier assigned by the issuing authority to an import license.	
CID-332	0..1	Export license reference	The unique identifier assigned by the issuing authority to an export license.	
CID-333	0..1	Pro-forma invoice reference	The unique identifier assigned by the issuer to a pro-forma invoice.	
CID-334	0..1	Delivery Note Reference	Reference to the physical document that accompanies the delivered goods.	
CID-336	0..*	Additional Reference	Reference to an additional document.	
Trade Line Item -> Trade Delivery -> Dangerous Goods				
CID-337	0..1	DG Regulations Code	A code indication the applicable DG regulation	
CID-338	0..1	Hazard type code	Type of possible hazard	
CID-339	0..1	Hazard classification code	Classification of hazard	
CID-340	0..1	UNDG number	United nations dangerous goods number	
CID-341	0..1	UNDG Flashpoint	United nations dangerous goods flashpoint	
CID-342	0..1	DG description	Description of the dangerous goods	
CID-343	0..1	DG declaration exception	To provide information on declaration exceptions.	
Trade Line Item -> Trade Agreement				
CID-360	0..1	Promotional Deal Reference	Reference to a number assigned by a vendor to a special promotion activity.	

UID	Crd	Short Name	Business Requirement	Rationale / Example / Mapping Notes / Status
CID-361	0..1	Customer order reference	The unique identification assigned by the customer to an order.	
CID-362	0..1	Supplier order reference	The unique identification assigned by the supplier to an order.	
CID-363	0..1	Consignee order reference	The unique identification assigned by the consignee to an order.	
CID-364	0..1	Contract reference	The unique identification assigned by the issuer to a contract.	
CID-365	0..1	Pro-forma invoice reference	The unique identifier assigned by the issuer to a pro-forma invoice.	
CID-366	0..1	Promotional Deal Reference	Reference to a number assigned by a vendor to a special promotion activity.	
CID-367	0..*	Additional Reference	Reference to an additional document.	

5.2.2.2. Receiving Advice (Business Document)

Requirements to be included in a future version of this BRS.

5.3. Business Rules

Not applicable

5.4. Definition of Terms

Regarding the Definition of Terms refer to TBG1 Common Supply Chain BRS