



**UNECE**

# Working Party on Land Administration (WPLA)

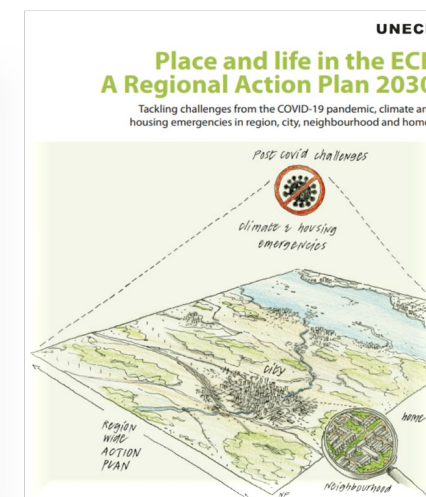
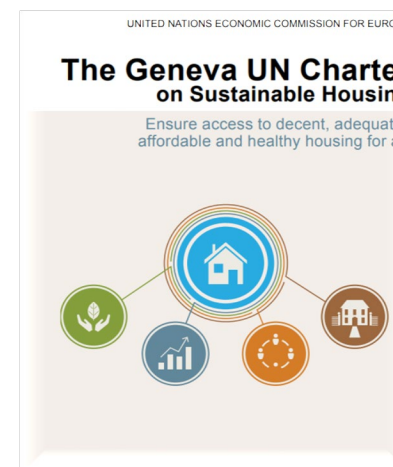


# The UNECE Committee on Urban Development, Housing and Land Management (CUDHLM)

The Committee on Urban Development, Housing and Land Management (CUDHLM) works to promote:

- Affordable, adequate, climate-neutral housing, including for those with special needs and vulnerable population groups
- Compact, inclusive, circular, resilient, smart and sustainable cities
- Transparent and efficient land use, and property registration

The work of the Committee on Urban Development, Housing and Land Management is based on principles and objectives of key United Nations policy documents on housing and urban development, including the [Geneva UN Charter on Sustainable Housing](#) and [Place and Life in the ECE – A Regional Action Plan 2030](#)



## UNECE: Working Party on Land Administration (WPLA)

- The Working Party on Land Administration aims to improve land administration and management in the UNECE region, enhancing security of tenure and promoting sustainable land use.
- It focuses on modernizing land administration systems, supporting policy formulation, and ensuring effective management and use of geospatial and real property data.
- The group fosters collaboration among member states through seminars, workshops, studies, and providing expert advice to promote best practices and policy development.



# Bureau of the UNECE's Working Party on Land Administration (WPLA)

## Chair



**United Kingdom**

**Ms. Victoria Abbott**

Head of External Affairs, Customer and Strategy Group  
HM Land Registry

## Vice-Chairs



**Finland**

**Ms. Kirsikka Riekkinen**

National Land Survey of Finland  
Assistant Professor, Aalto University



**Spain**

**Ms. Pilar Verdejo García**

Land and Business Registrar of Spain

## Members



**Greece**

**Ms. Chryssy Potsiou**

Professor, NTUA  
Honorary President, International Federation of Surveyors (FIG)

[Biography](#)

[Curriculum Vitae](#)

## UNECE: Working Party on Land Administration (WPLA)

---

- a) Organize workshops and webinars in the ECE region
- b) Promote the work of the Working Party and provide advice on land administration
- c) Provide policy advice to national and local governments
- d) Contribute, as requested, to the discussions of the CUDHML
- e) Contribute, as requested, to the work of the UN-GGIM
- f) Land Reviews:  
Support countries in reviewing their housing policies at the national level through the preparation of country profiles on housing, urban development and land management and thematic studies.

## WPLA PROGRAMME OF WORK 2023-2025

---

- The 13th Session of WPLA, held on April 4-5, 2023 at the Palais des Nations in Geneva, Switzerland, served as an international forum for discussing land administration and management.
- Discussions at the session also addressed major global trends affecting land administration, including:
  - Ecosystem challenges and security,
  - The impact of accelerated digitalization
  - The future role of land administration in sustainable development and
  - Property rights security.



# WEBINARS AND WORKSHOPS



## Recent webinars



- Cyber Security. Challenges of Cyber Security in Digital Land Administration: *25 April and 22 February 2024*
- Ecosystem in Land Administration: How are land and cadastral authorities working with new ecosystems in land administration? *18 April 2024*
- Today's Webinar: Informal settlements. 14<sup>th</sup> June 2024



## Past webinars

- 
- [Cadastral mapping and strategies of land administration authorities in Europe](#)
  - [Data interoperability: The benefits for the land administration sector](#)
  - [Benefits and challenges of open data in land](#)
  - [Socioeconomic benefits of geospatial information](#)
  - [Geospatial information – advanced education and competence needs](#)

## Recent workshop

### Workshop "Ensuring tenure security after natural and man-made disasters"

- 02 - 03 November 2023 Madrid Spain

The UNECE workshop in collaboration with the Spanish Land and Business Registrars Association, focused on securing land and housing tenure after natural and man-made disasters, discussing legal, geospatial, and economic strategies. The event also explored the integration of geospatial and legal information to enhance property ownership records and discussed the promotion of digital solutions for sustainable urban development and the regularization of informal settlements.



## Ongoing Study on Ecosystems and Security in Land Administration



- Ecosystems in Land Administration: Proposing initiatives that aim to strengthen land administration through strategic, transparent, and cooperative frameworks that align with the 2030 Agenda, enhancing security, efficiency, and sustainability in managing land rights and responsibilities.
- Security in Land Administration:
  - Data Security
  - Tenure Security
  - System Security
  - Cybersecurity

## ECOSYSTEMS IN LAND ADMINISTRATION



- Guiding principles for strengthening ecosystems and security in land administration :
  - Strategic enablement
  - Transparent and accountable
  - Reliable, accessible and usable
  - Collaboration and cooperation
  - Integrated solution
  - Sustainable and valued
  - Leadership and commitment
- Scenario study on future land administration in the UNECE region: Urbanization, climate change, digital transformation, the data revolution, distributed networks and front-end technologies as catalysts
- New public-private partnership arrangements, online public services and interoperability solutions (technical, semantic, legal and organizational)
- Identify which aspects are crucial for national policies and regional cooperation arrangements and for fostering global awareness and provide recommendations for supporting national and regional policies and initiatives in the area of land administration

# SECURITY IN LAND ADMINISTRATION



- **Tenure Security:**
  - Legal aspects
  - Geospatial information
  - Challenges:
    - Digitalization
    - Natural and man-made disasters
    - Informal Settlements
    - Building resilient cities
- **Cybersecurity: REM**
- **System security:**
  - Threats
  - Case studies
- **Data Security:**
  - Open Data
  - Data Privacy

# Thank you!

---

Please refer to the Activities Document on the UNECE webpage for more details.

*Follow us on our social media channels:*



[www.facebook.com/UNECE.Housing](https://www.facebook.com/UNECE.Housing)



[www.linkedin.com/showcase/unece-housing-and-land-management-unit](https://www.linkedin.com/showcase/unece-housing-and-land-management-unit)



<https://twitter.com/UNECEHLM>



<https://www.instagram.com/unechlm>



**UNECE**

