

# UNECE Regional Workshop on Advancing Road Safety

Road Safety Audit and Road Safety Inspection implementation practices

**8/04/2024**

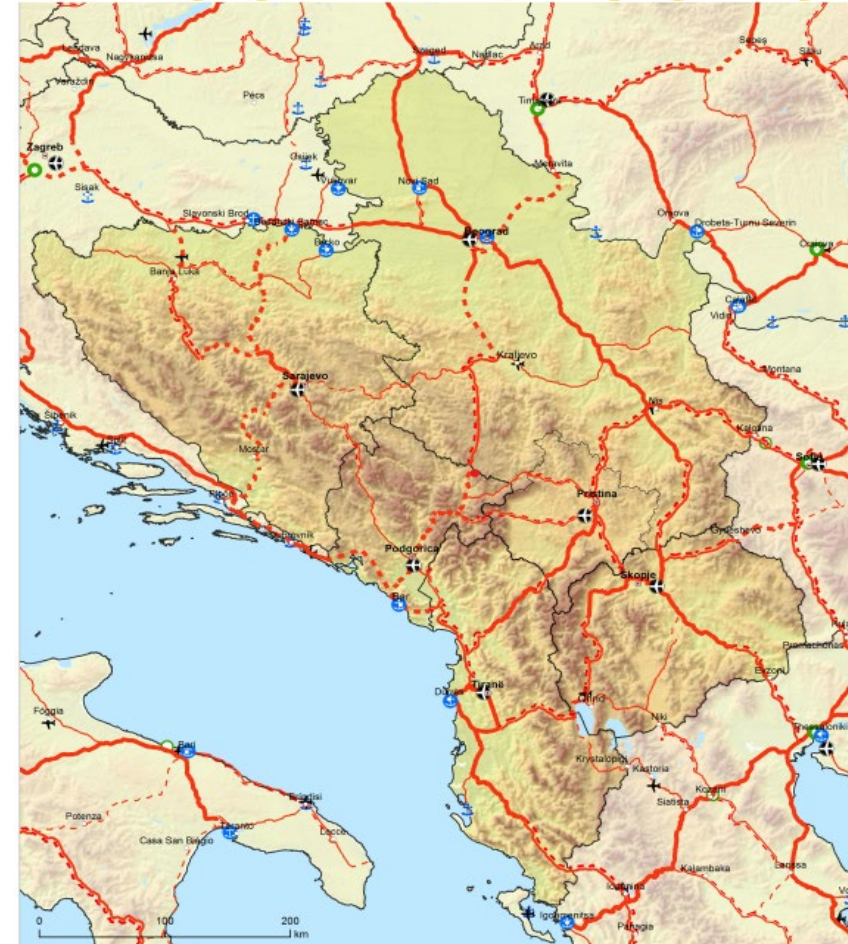
**Liljana Çela**  
Road Safety Desk Officer

# **DIRECTIVE 2008/96/EC on road infrastructure safety management**

Directive 2008/96/EC was amended by Directive (EU) 2019/1936 as part of the EC third “Europe on the Move” Package

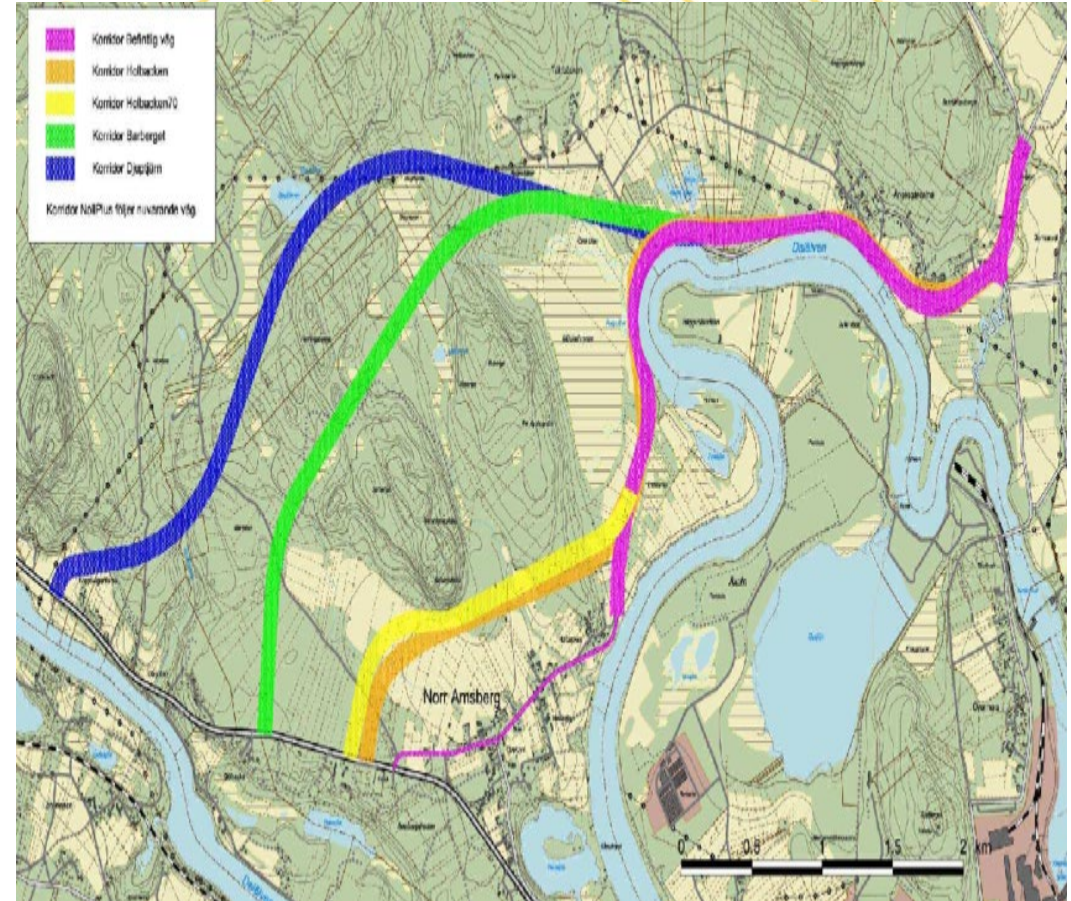
### **Scope:**

- TEN T network
- Primary roads
- EU funded Interurban roads



## Road Safety Impact Assessment

- Strategic comparative analysis of a new project on the safety of the road network
- New road alternatives compared based on the weighted scale of criteria
- During (pre)feasibility study



## Road Safety Audits

- ✓ Independent, detailed, systematic and technical safety check of the design characteristics of project
- ✓ All stages:
  - draft design,
  - detailed design,
  - pre-opening
  - early operation

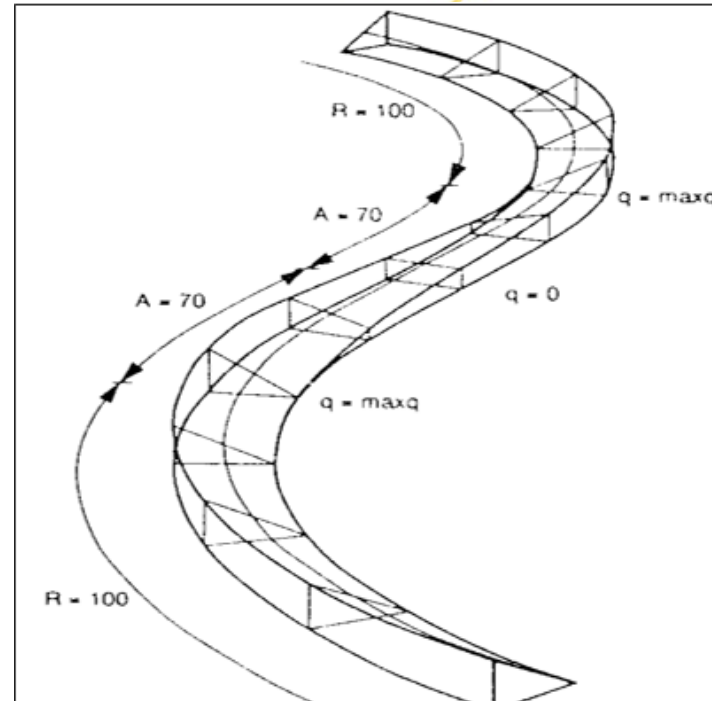
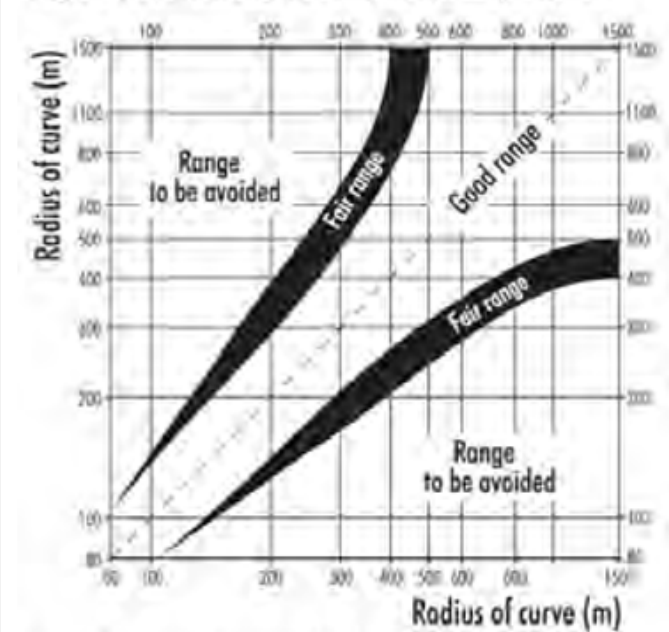


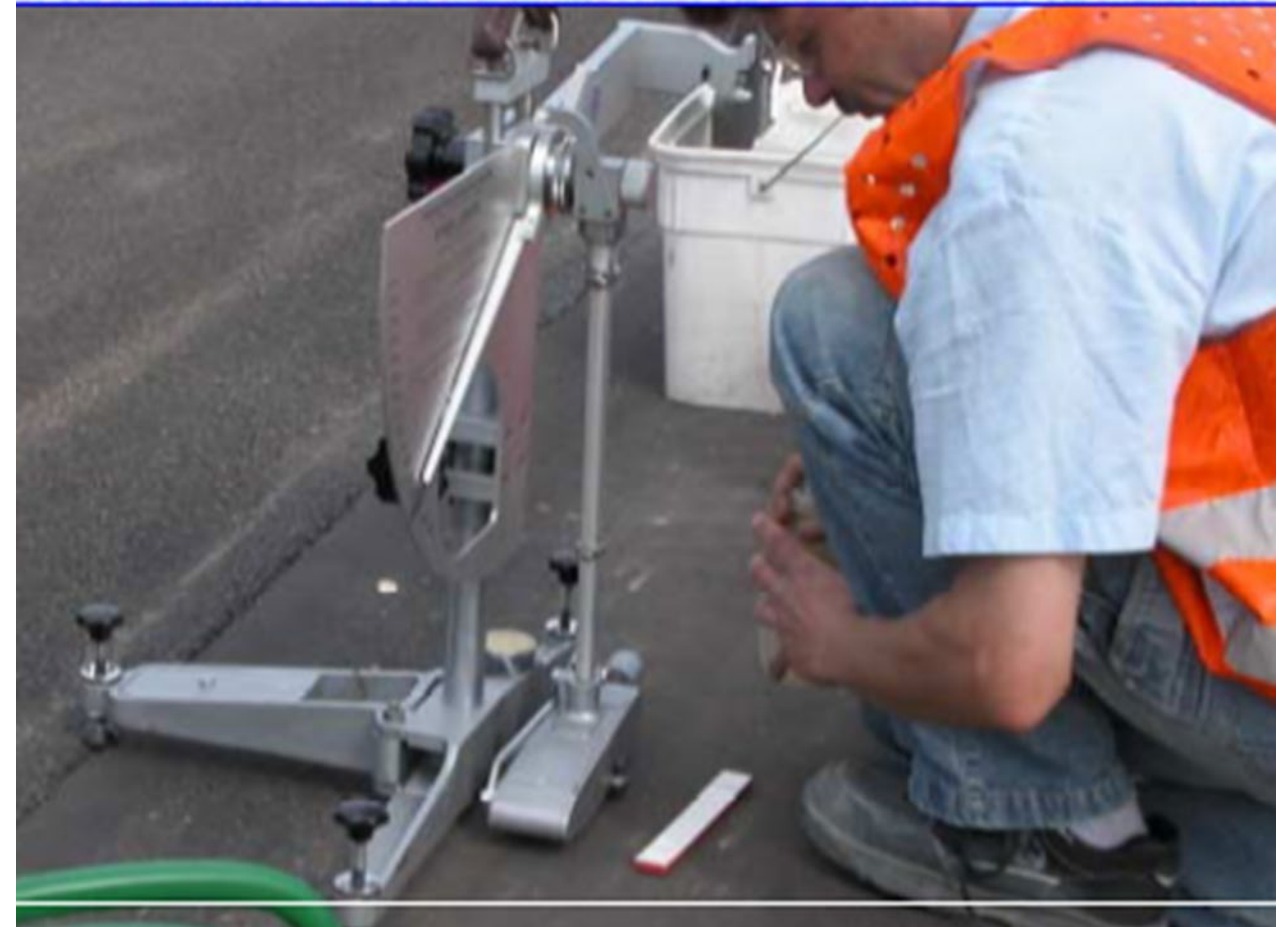
Figure HA-9 Tuning radii in curve sequences



Source: European Commission, Road User's Kit (1992)

## Periodic Road Safety Inspections

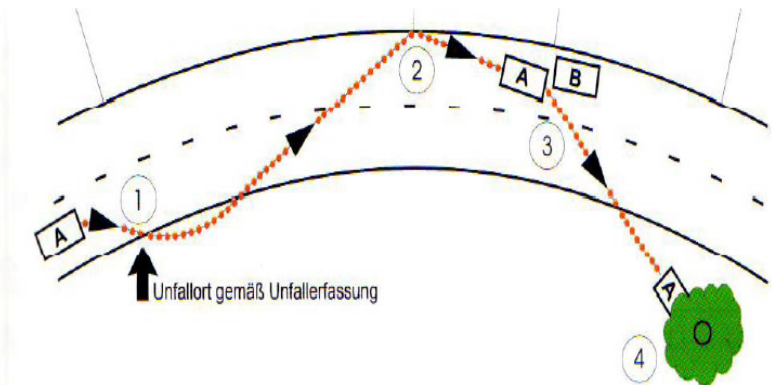
- ✓ Correlated with maintenance (to re-establish safety features)
- ✓ Sufficiently frequent
- ✓ National guidelines for road works
- ✓ Joint teams to inspect tunnels, at maximum 6 years



## Targeted Road Safety Inspections

- ✓ On black spots, sections with serious accidents
- ✓ According with the Network wide road safety assessment
- ✓ Can question the design principles
- ✓ Triggers actions from the road manager

Location of accident

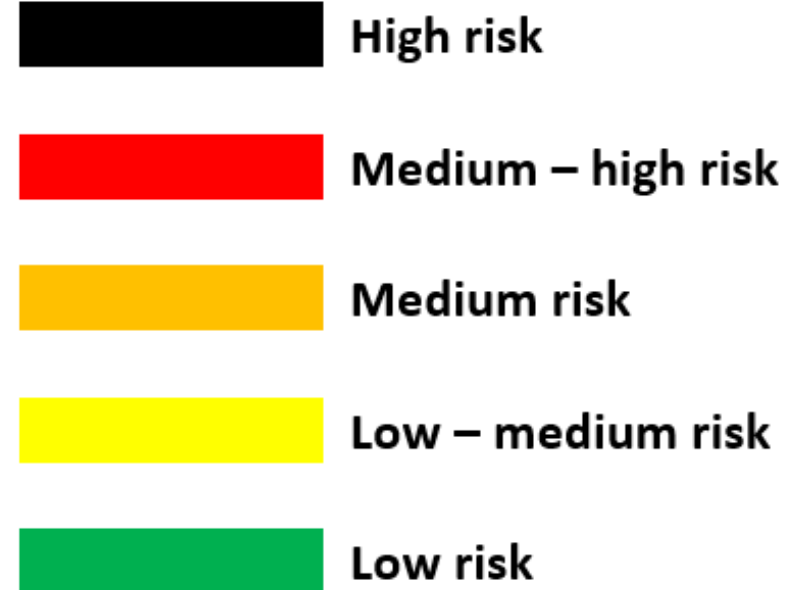


Reference: M Uko, 2012

- 1 - point with a road deficit, that had caused the driving mistake
- 2 and 3 - point of collision
- 4 - position of vehicle, which is normally recorded by the police officer

## Network-wide road safety assessment

- ✓ Evaluates accident and impact severity risk, based on:
  - a visual examination of road characteristics (in-built safety)
  - serious accidents statistics over 3 years
- ✓ Results in a minimum 3 categories classification of sections
- ✓ Worst sections are to be followed by targeted inspections
- ✓ By 2024, then every 5 years





## Road Safety Auditors

### Tasks:

- Road safety audits
- Targeted road safety inspections

### Certificate of competence

- ✓ Experience in road design, road safety engineering, accident analysis
- ✓ Trained initially and periodically
- ✓ Independence and no conflict of interests



## Obligations of Member States

- ✓ To establish the network in scope and to communicate it to the Commission
- ✓ To draft RISM application guidelines
- ✓ R.S. impact assessment, R.S. audits and Network wide R.S. assessment, periodic and targeted R.S. inspections (including the follow-ups)
- ✓ Reports for accidents with victims
- ✓ To consider the needs of vulnerable road users
- ✓ To consider the needs of automation regarding the signs and markings
- ✓ To encourage the voluntary reporting of R.S. issues
- ✓ Certification and appointment of R.S. auditors



# Capacity Buildings, Guidelines & Studies

## RSI

- 2 Capacity Buildings with 3-4 representatives for each RP
- RSI Guidelines for Western Balkan region
- RSI on CORE and Comprehensive – 300 km out of 580 km are planned for Investments under Safe and Sustainable Programme

## RSA

- 2 Capacity Buildings with 4 representatives per each RP
- RSA Guidelines for Western Balkans
- 6 RSA projects in the CORE and Comprehensive

# High Risk road sections



**Study on Level Crossings Safety Improvement** - supported by the Regional Infrastructure Managers and JASPERS, 2022

**Technical and Administrative specifications** to be prepared for tender documentation for **140 level crossings in the region** - ongoing, deadline May 2024

**Improvement of the safety at the level crossings** – follow up, securing the investments

Thank you!