



# **The Role of National Geoportal in Land Administration in the Republic of Armenia**

# 2023 MAIN TARGETS



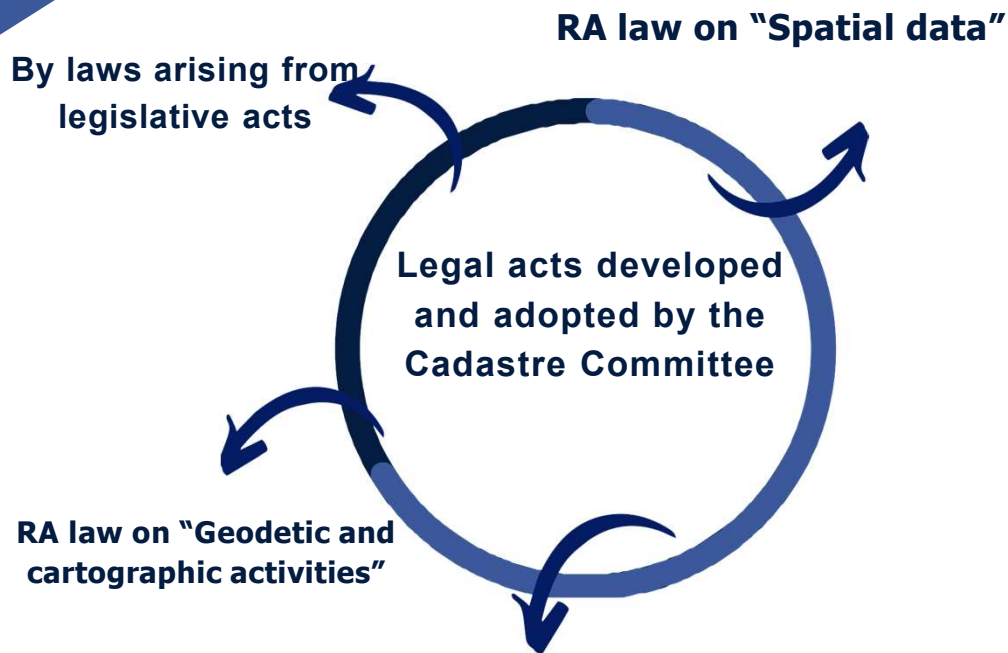
**Creation of a  
pilot sectoral  
cadastre**



**Correction of  
cadastral  
maps based  
on orthophoto  
plans**



**Creation of  
registry  
database on  
addresses and  
toponyms**



Legislative changes and their practical implementation were made on the basis of the INSPIRE Directive

# 1. CREATION OF INTEGRATED CADASTRE (NSDI)

Powers of state bodies, local self-government bodies in the field of spatial data

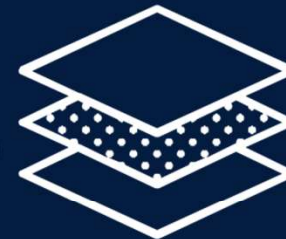


Specification of NSDI components and management



Law on "Spatial data" and law on "Geodetic and cartographic activities"

Classification of spatial data groups



Principles of collecting, disseminating and using of spatial data collection



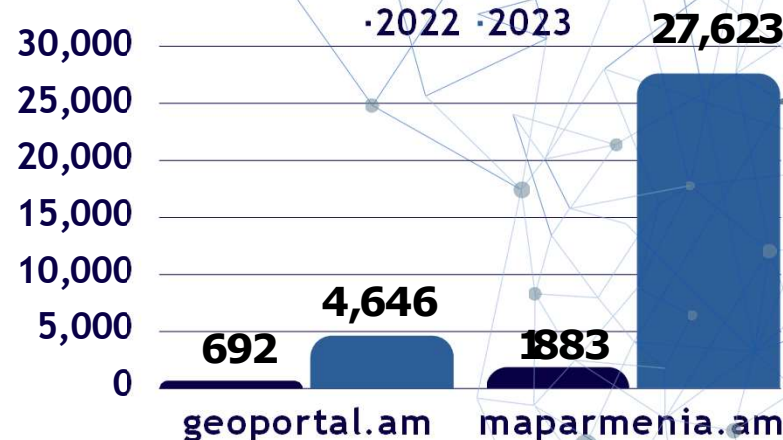
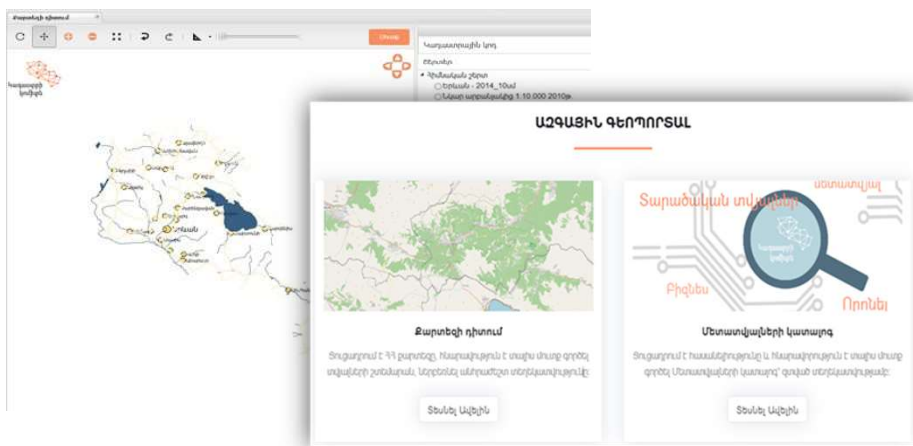
Principles of establishing and maintaining of National geoportal



Bylaws ensuring implementation of laws



## 2. Development of National Spatial Data Infrastructure (standard)



- **Transport network;**
- **Land area coverage;**
- **Geographical names;**
- **Cadastral land parcels;**
- **Buildings-constructions;**
- **Administrative boundaries;**
- **Superficial waters;**
- **Orthophotos;**
- **Relief;**
- **Metadata;**
- **Data quality;**
- **Addresses.**

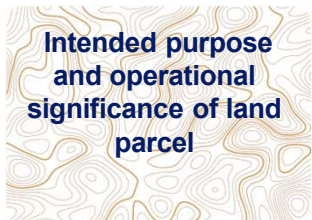
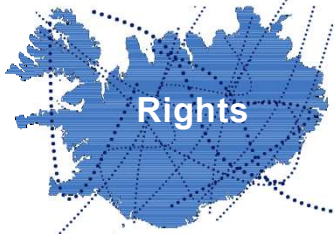
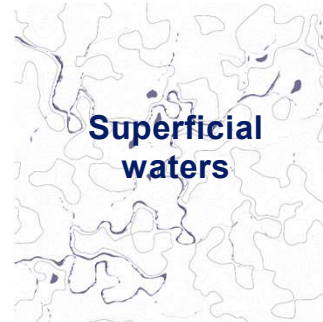
With the support of ADB 12 spatial data standards have been developed and identical to the INSPIRE directive and approved by the government.

Jointly with the Ministry of Economy development of standards for the thematic layer "Vinery Plantation" in order to integrate with the national geoportal.

# BASIC SPATIAL DATA

## Cadastral

## Aerospace



## RA orthophoto plans, 2021

Property subject error

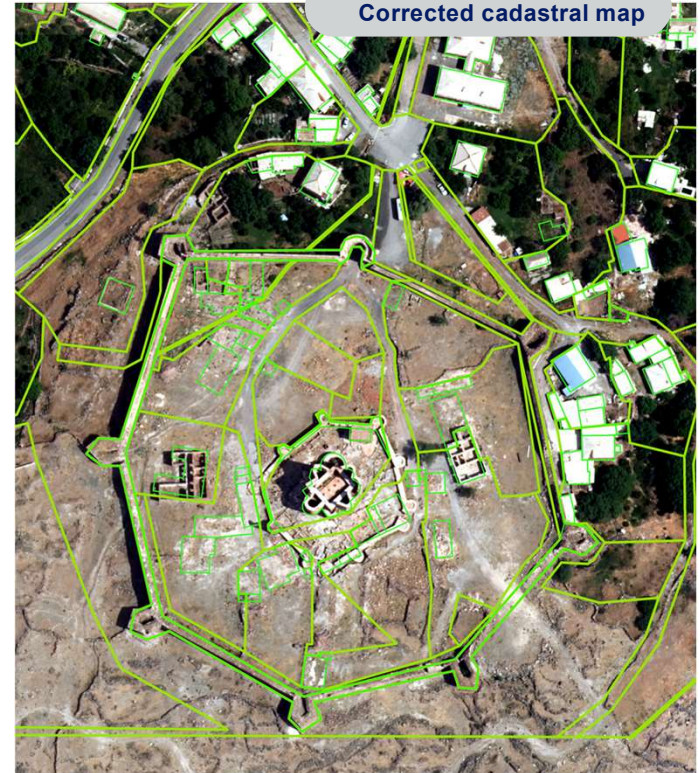
Cadastral map before correction



Intended purpose and operational significance of land parcel



Corrected cadastral map



Acquisition of a new orthophoto plans is planned in the future

About 1,500 property units were corrected

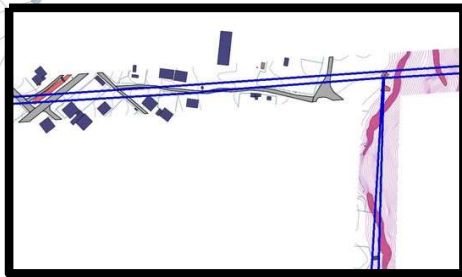
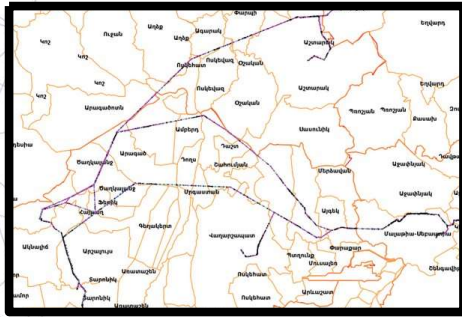
## Correction of “Sevan” national park boundaries



Correction of border line about the long of 340 km



## DATA INTEGRATION WITH THE NATIONAL GEOPORTAL



Integration of data on 110 kV air power lines to the national geoportal about 480 km

Support in the development of the terms of reference for the new 220 kV air power lines and the data collection and implementation of the GIS

As a result of the integration, many developed and none developed land parcels belonging to citizens were identified

The user can easily find out whether the land parcel is within the safety zone or not

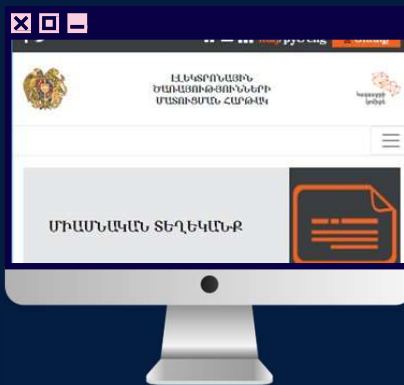
## EMBEDDED ELECTRONIC SYSTEMS

26

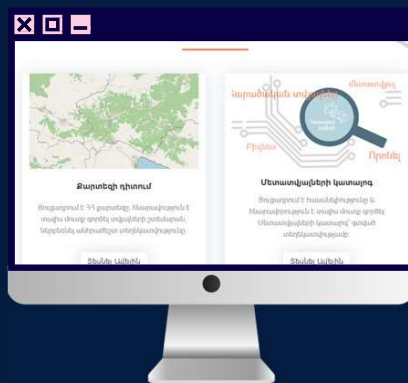
[map.e-cadastre.am](http://map.e-cadastre.am)



[e-cadastre.am](http://e-cadastre.am)



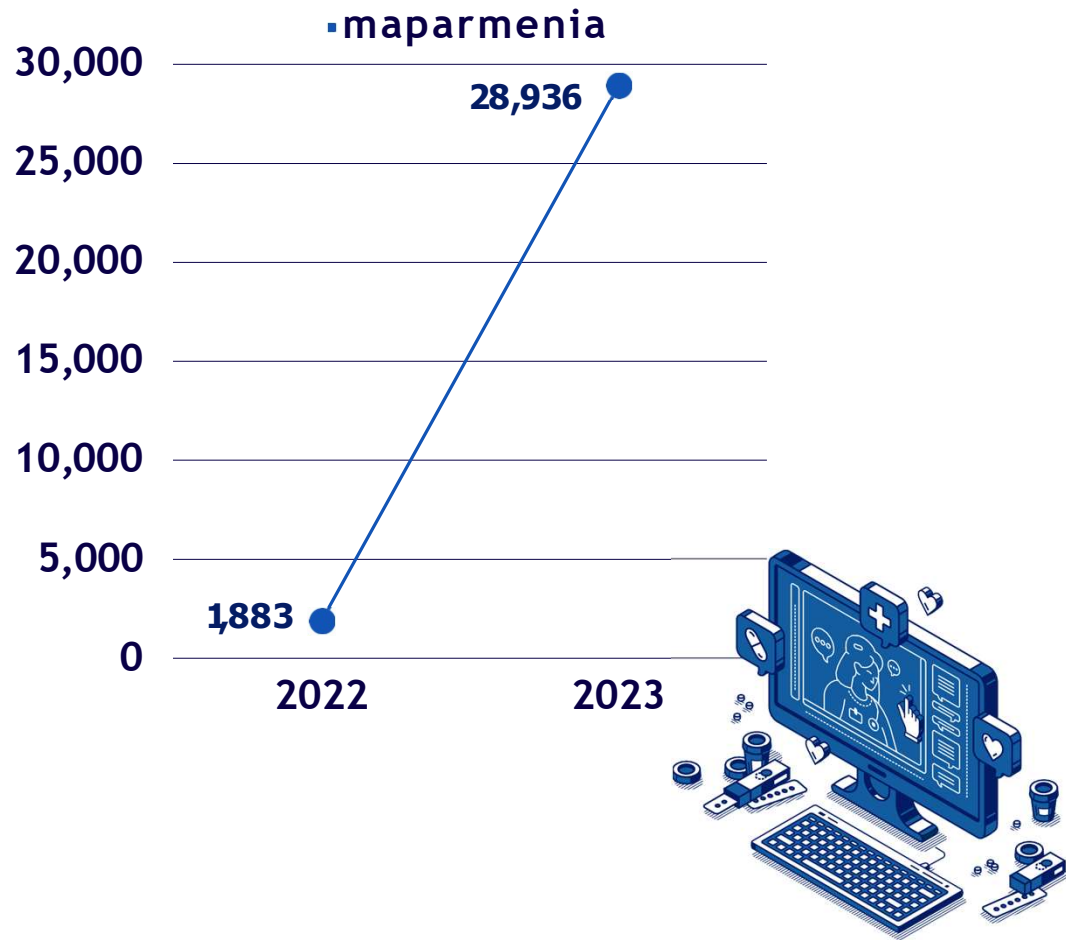
[maparmenia.am](http://maparmenia.am)



[geoportal.am](http://geoportal.am)



## Number of visits on platform of RA Cadastre



**Thank you**



**e-cadastre.am**  
**maparmenia.am**

