



# GEOSPATIAL INFORMATION AND TENURE SECURITY: UN PERSPECTIVE

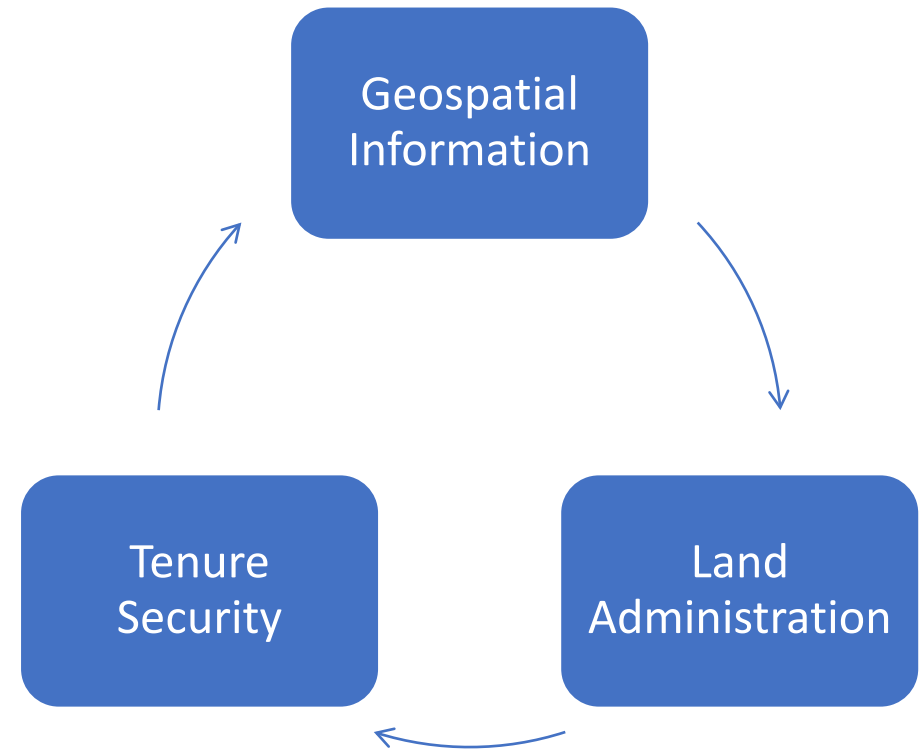
Pilar Verdejo García

# KEY CONCEPTS

**Tenure Security:** The protection of the right to ownership and other rights *in rem* over the Land

**Geospatial Information:** Data that is referenced to a location or place, such as geographic coordinates, or an address. It describes 'where' all things are, and provides the digital connection between a place, its people, and their activities.

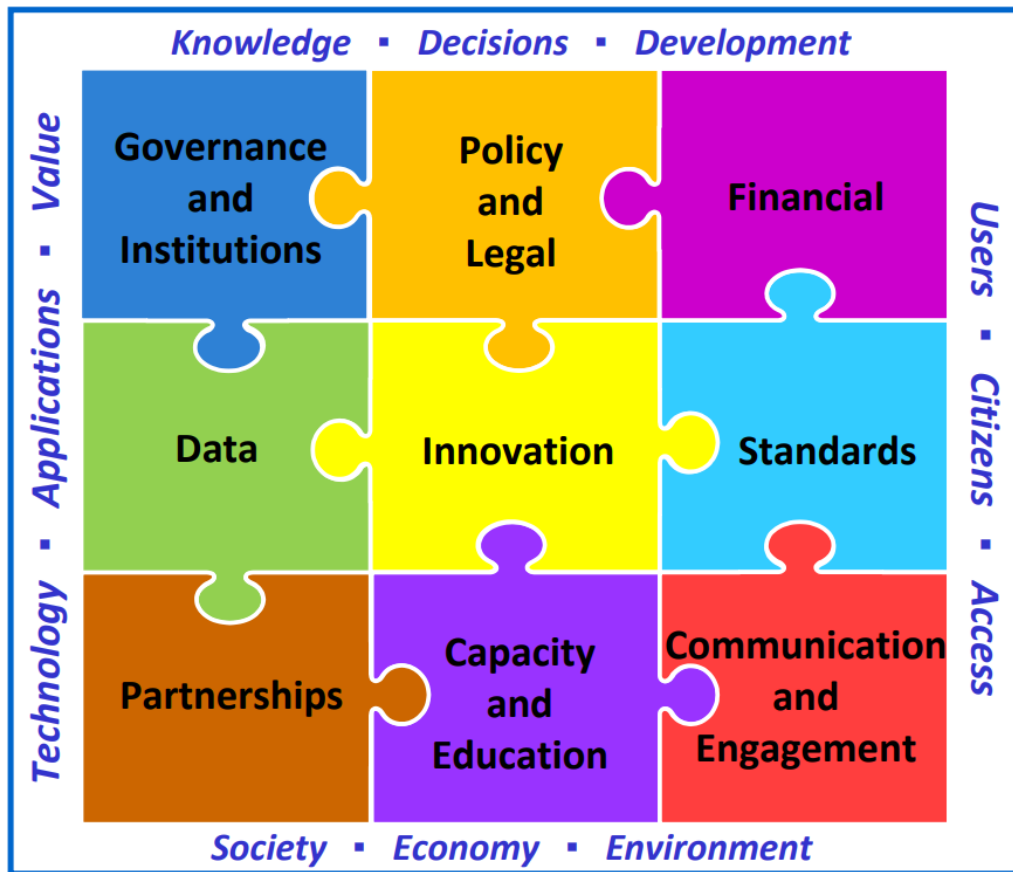
**Land Administration:** the process of determining, recording, disseminating, and updating information about the relationship between people and land.



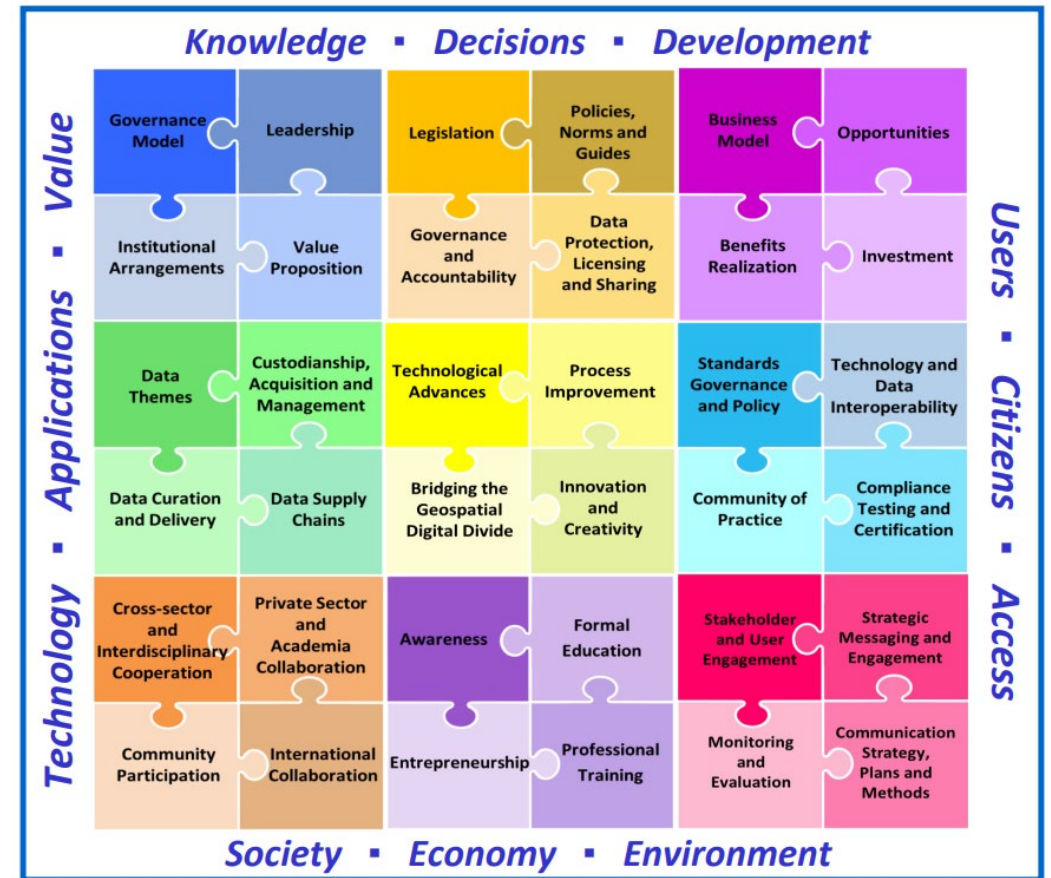
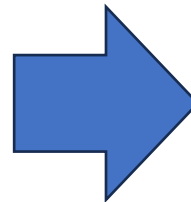


# UN-GGIM

## IGIF: Integrated Geospatial Information Framework



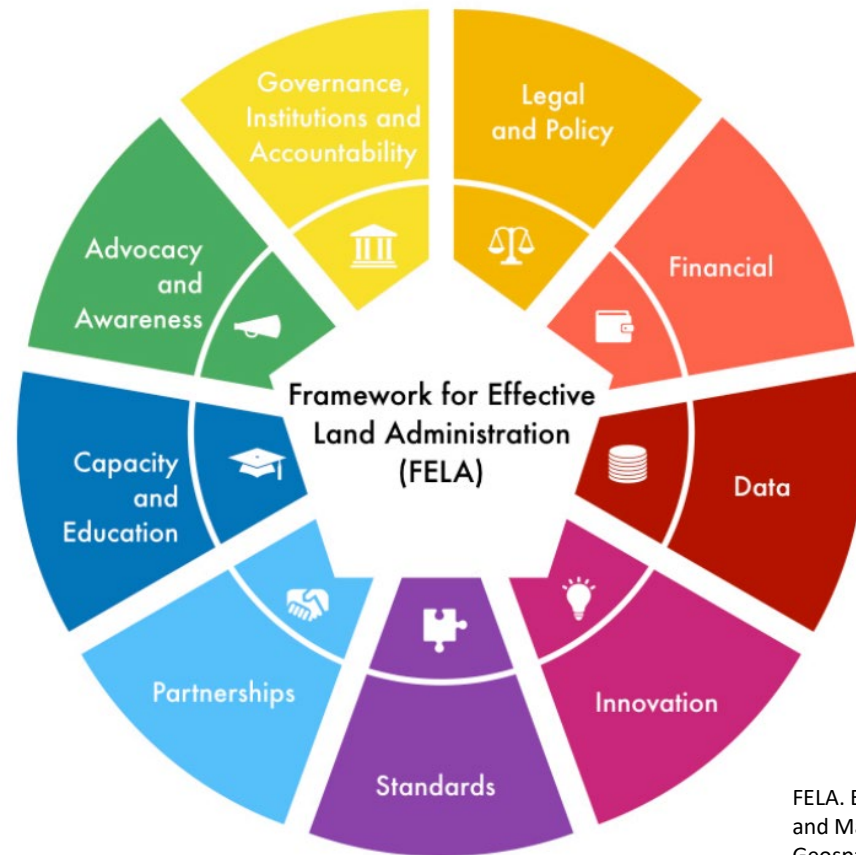
9 STRATEGIC PATHWAYS



36 KEY ISSUES



# FELA: Framework for Effective Land Administration



**9 PATHWAYS**

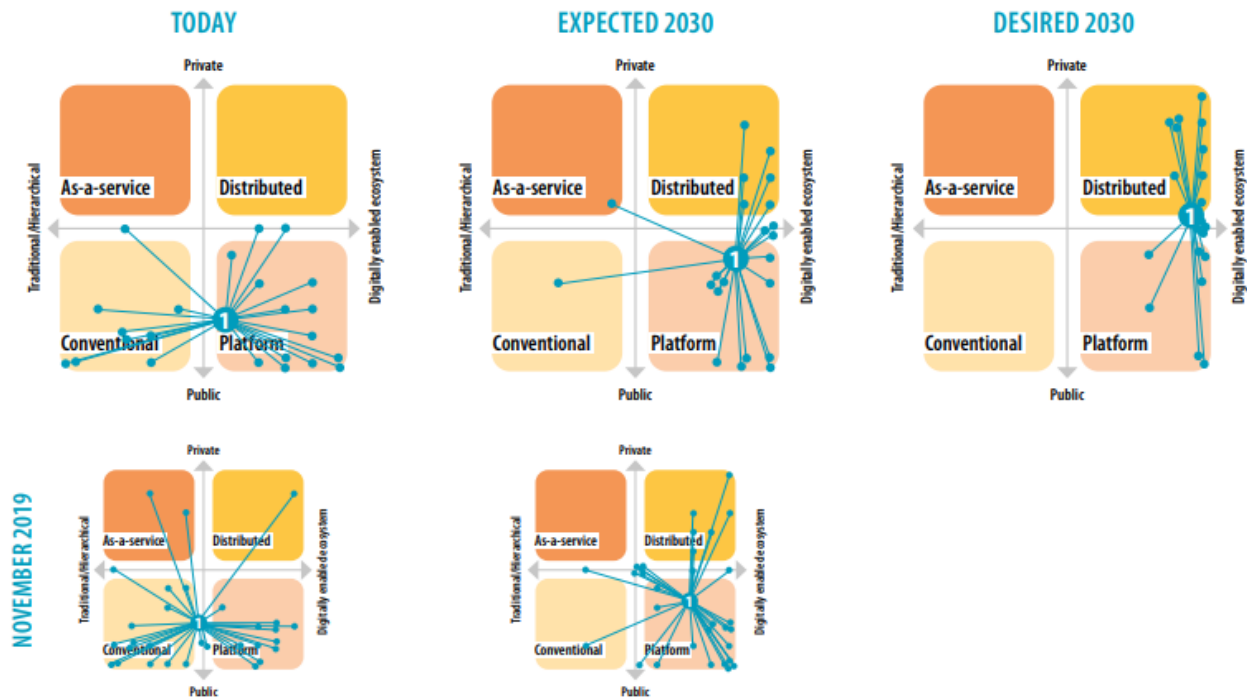
# SCENARIO STUDY FOR LAND ADMINISTRATION

1. Conventional land administration

2. As-a-service land administration

3. Platform land administration

4. Distributed land administration





# CONCLUSIONS

- Land administration as a key issue to ensure an adequate development of the countries
- Geospatial information as a necessary tool for Land administration
- Tenure security ensured by a better use of geospatial information
- Importance of cooperation between actors and of exchanging and protecting data.



THANK YOU