

## **Global Workshop on Funding and Financing Trans-boundary Water Cooperation and Basin Development**

# **Joint Basin Investment Plan as tools to mobilize financial resources: the Experience of the Sio-Malaba-Malakisi (SMM) Basin**

**Eng. Maximo B. Twinomuhangi**  
**Team Leader – Kyoga Water Management Zone**  
**Ministry of Water and Environment**  
**The Republic of Uganda**

# Presentation Outline

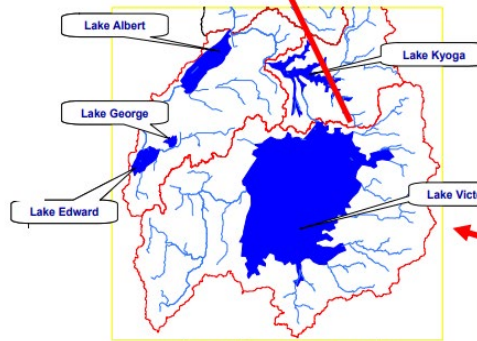
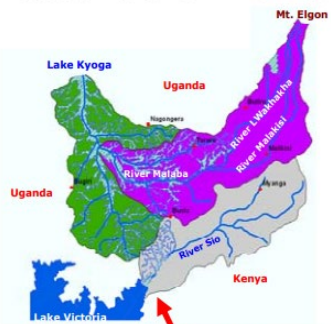
- 1) Introduction
- 2) Challenges and Issues in the SMM Basin
- 3) The SMM Investment Plan/Strategy
- 4) Strategic Intervention Measures
- 5) Resource Mobilization
- 6) Potential SMM Water Related Projects
- 7) Angololo Multipurpose Water Resources Development Project  
and its Key Features
- 8) Conclusions

# Introduction

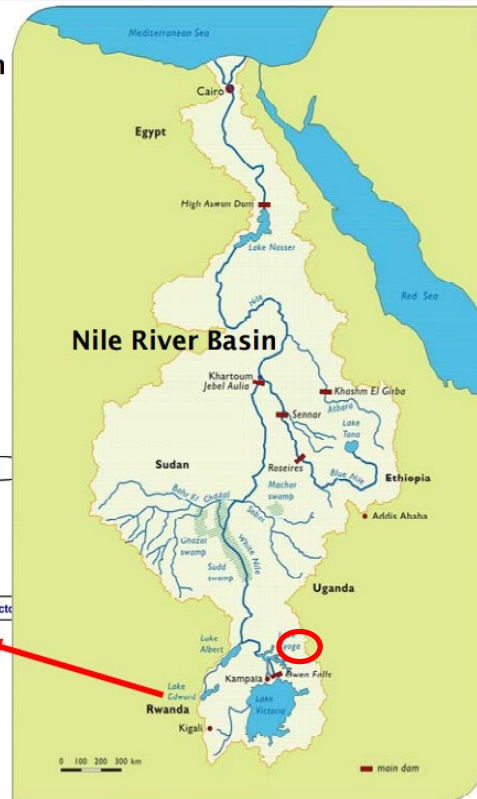


- ✓ Sio-Malaba-Malakisi (SMM) Basin lies on the border between Kenya and Uganda and is part of the Nile River Basin.

Sio-Malaba-Malakisi River Basin



Lake Victoria Basin



Nile River Basin

- ✓ River Sio discharges into Lake Victoria while the Malakisi River joins the Malaba River which flows westwards into Lake Kyoga
- ✓ Malaba-Malakisi catchment drains 1790 Km<sup>2</sup> while Sio catchment drains 1450 Km<sup>2</sup>



# Challenges and Issues in the SMM Basin

- ✓ High poverty levels and population growth rates, high disease prevalence rates;
- ✓ Water, Energy and Food insecurity;
  - Low access to clean and safe water, i.e. < 25% far below the national average of 53% (rural water supply).
  - >90% of community members use firewood for cooking and < 6 % are connected to the national power grid.
  - 80% of the community members derive their livelihoods from rain-fed subsistence farming.
- ✓ Unsustainable utilization of resources, e.g.. Deforestation, wetland degradation, cultivation of hill slopes, degradation of river banks etc. leading to loss of bio-diversity, water pollution, reduction in water quantity, extremes (floods and drought), etc;
- ✓ Inadequate technical and financial capacity



# The SMM Investment Plan/Strategy

- ✓ To jointly improve the livelihoods of the SMM Basin riparians by reversing the wide-spread environmental degradation in the basin;
- ✓ Promotion of environmentally sustainable socio-economic development of the basin through identification and implementation of appropriate Trans-boundary Investment Projects aimed at addressing water resources issues and challenges in the basin;
- ✓ Key development opportunities that formed the basis for Investment Strategy include;
  - High potential for Increased Agricultural Productivity
  - High Demand for Water Supply and Sanitation Services
  - Significant Energy Demand and Development Potential
- ✓ The identified Investment Projects are used for mobilization of the financial resources required for their implementation;



# Strategic Intervention Measures

Eight (8) strategic intervention measures based on an analysis of the critical basin water resources issues and a participatory stakeholder consultative process

1. Creation of an Enabling Environment: **SMM Policy, Legal, and Institutional framework.**
2. Human and Institutional Capacity Development
3. Increase Water Supply and Sanitation Coverage
4. Enhance Household Incomes
5. Promote Integrated and Sustainable Watershed Management
6. Enhance Agricultural Production
7. Enhance Fisheries Management
8. Strengthen Water Resources Planning and Management



# Resource Mobilization

- ✓ The SMM strategy is anchored under Nile Basin Initiative (NBI) through which most of the funding for the SMM regional projects is mobilized as part of the overall Nile Basin development funds;
- ✓ Feasibility studies provide the basis for mobilizing the necessary financial resources for implementation of the investment projects;
- ✓ Sources of funding include development partners as well as contributions from the beneficiary countries;
- ✓ At a national level - Ministries of Finance play lead roles in the mobilization, budgeting and allocation of funds to different sectors and also coordinate donor inputs (through budget support).
- ✓ At a regional level – SMM policy organs and secretariat lead the mobilization of the required financial resources;
- ✓ The SMM PMU approaches current development partners under the NBI/NELSAP framework to solicit additional financial support to supplement government inputs;
- ✓ Funds for regional projects are jointly mobilized by the 2 countries and usually include country contributions to meet the recurrent expenditures and a significant contribution from external support agencies in the form of grants or loans;



# Potential SMM Water Related Projects

COMPONENT	PROJECT TITLE	ESTIMATED COST (\$ Mill.)
Water Supply and Sanitation	<b>Project 1:</b> Water Supply for Kapsakwony Town and Kaptama Trading Centres in Mt.Elgon District	3.0
	<b>Project 2:</b> Rehabilitation and Extension of Chesikaki Water Supply	1.0
	<b>Project 3:</b> Extension of Old Kibichori Water Supply	0.5
	<b>Project 4:</b> Rehabilitation and Extension of Tororo Gravity Flow Scheme	3.5
	<b>Project 5:</b> SMM Urban Sanitation Project	18.0
	<b>Project 5b:</b> Namutumba Water Supply Project	4.0
	<b>Project 6:</b> SMM Rural Water Supply and Sanitation Project	50.0
	<b>Project 7:</b> : Water Supply for Butaleja Town Council	2.0
	<b>Sub-total</b>	<b>82</b>
Enhanced Agricultural Production	<b>Project 8:</b> Busia Irrigation and Drainage Project	2.0
	<b>Project 9:</b> Chesikaki Irrigation and Drainage Project	0.2
	<b>Project 10:</b> Strengthening of Extension Services in the SMM Catchment	2.0
	<b>Project 11:</b> Mt.Elgon Trout Fisheries Development Project	0.5
	<b>Project 12:</b> SMM Aquaculture Development Project	2.0
	<b>Project 13:</b> Enhancement of Fisheries Productivity in SMM Water Bodies	2.5
	<b>Project 14:</b> SMM Fish Hatchery Development Project	10.0
	<b>Project 15:</b> Rehabilitation of Doho Rice Irrigation and Drainage Project in Butaleja District	2.5
	<b>Sub-total</b>	<b>21.7</b>
Integrated Watershed Management	<b>Project 16:</b> SMM Afforestation Project	10.0
	<b>Project 17:</b> SMM Soil and Water Conservation Project	8.0
	<b>Project 18:</b> SMM Wetlands Conservation and Management Project	5.0
	<b>Project 19:</b> Strengthening the SMM Water Resources Monitoring Network	0.5
	<b>Project 20:</b> SMM Water Resources Assessment Project	5.0
	<b>Project 21:</b> SMM Flood Control and Early Warning Project	10.0
	<b>Project 22:</b> Bugiri Water Resources Mgt. Project	10.0
	<b>Sub-total</b>	<b>48.5</b>
	<b>TOTAL</b>	<b>152.2</b>

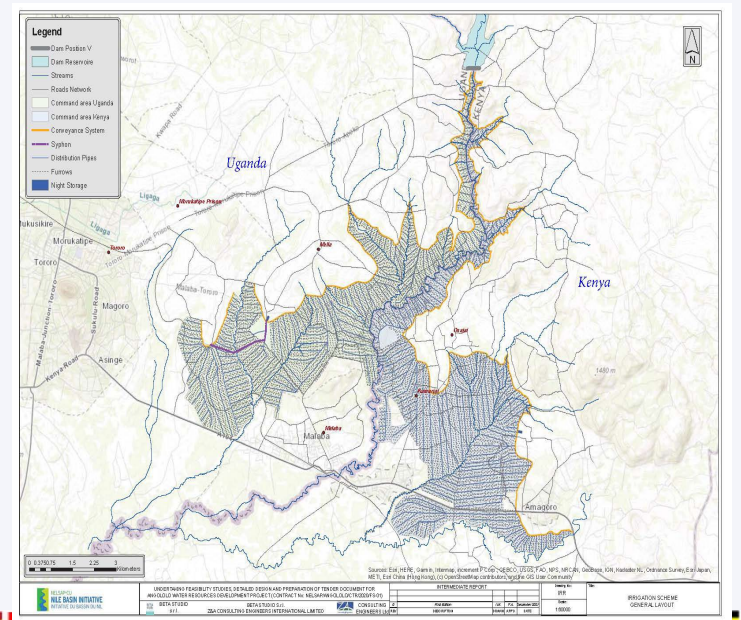




# Angololo Multipurpose Water Resources

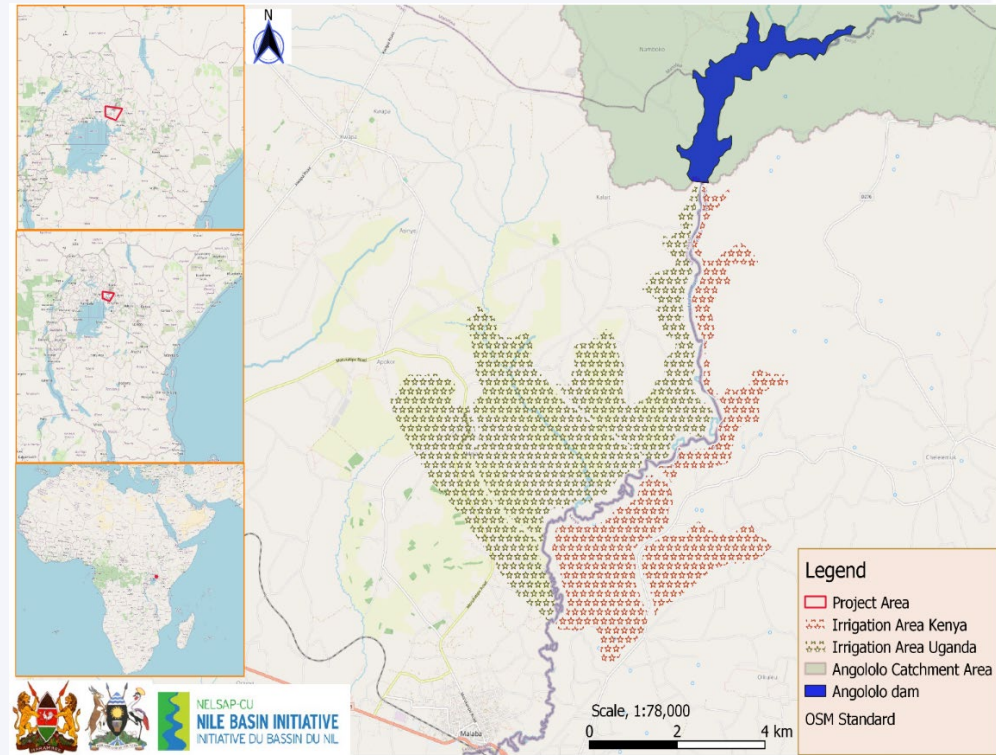
## Development Project

- ✓ Kenya and Uganda with support of the NELSAP identified Angololo Multipurpose Water Resources Development Project in 2010.
- ✓ The project goal is to alleviate poverty by transforming the subsistence farming into large-scale commercial farming.
- ✓ Approved by NELCOM during the 18th meeting on October 13, 2015.
- ✓ Prioritized under the African Union (AU) NEPAD-IPPF indicative project pipeline (2016-2020).
- ✓ NELSAP received a grant (USD 1.5m) from NEPAD-IPPF to prepare pre-investment studies.
- ✓ The studies including Feasibility Studies, Detailed Designs, Tender documents, ESIA, and RAP were completed on November 15, 2022).



# Key Angololo Project Features

- ✓ Dam with 31.6 MCM storage capacity, 40 m high.
- ✓ Mini Hydropower plant of capacity 1.3 MW.
- ✓ Irrigation Command Area of 4,000 hectares
- ✓ Domestic water supply to 270,000 people.
- ✓ Livestock water supply.
- ✓ Watershed Management - 447 km<sup>2</sup> upstream of the dam



# Conclusions

Key prerequisites for effective SMM water resources planning, development and management;

- ✓ Inter-state cooperation,
- ✓ Adoption of integrated water resources methods supported by modern information and decision support systems based acquisition and sharing of reliable data and information
- ✓ Financial resource mobilization through identified projects.



**Thank You**

**[mtwinomuhangi@gmail.com](mailto:mtwinomuhangi@gmail.com)**