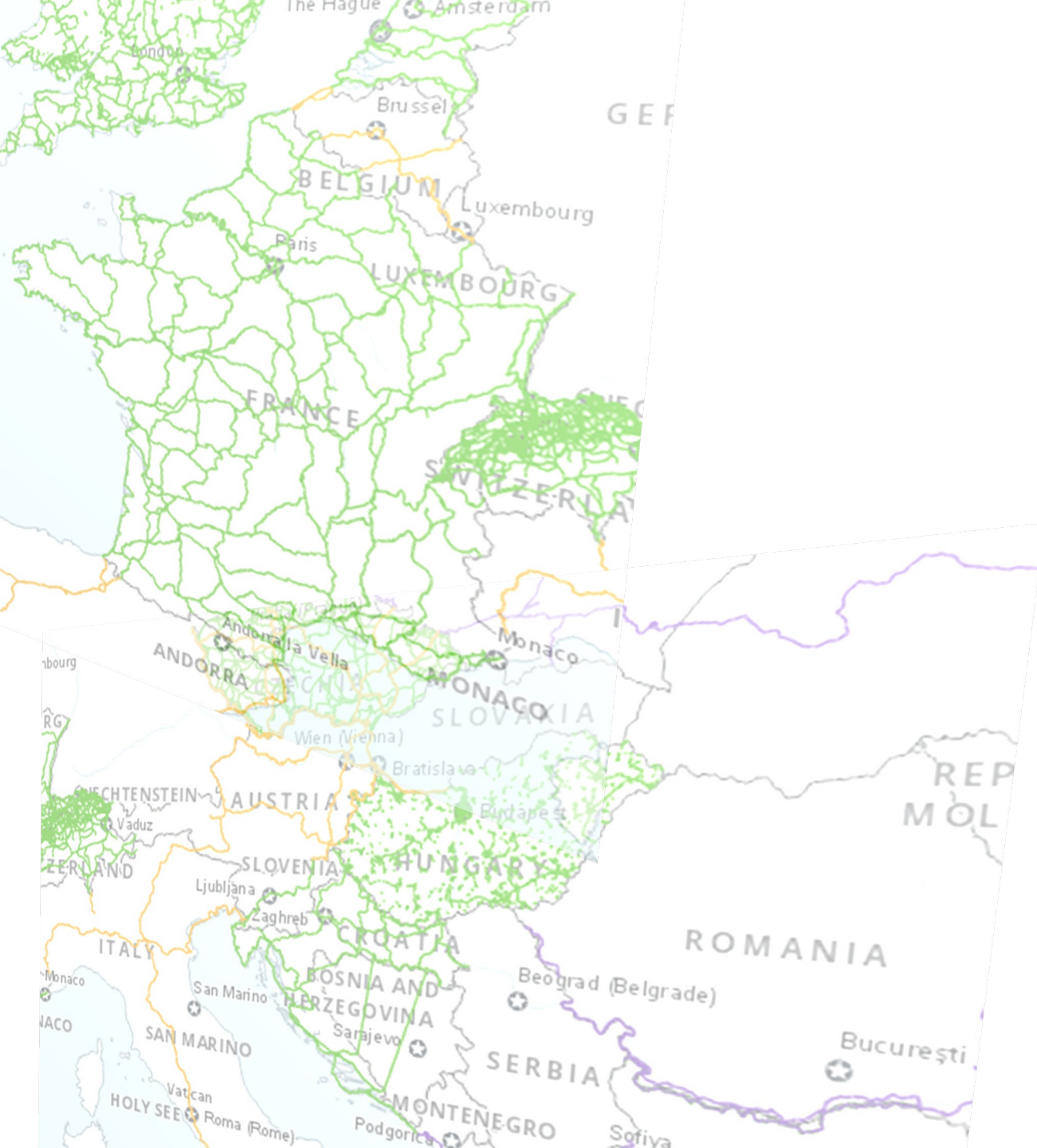


Group of Experts on cycling infrastructure module

WP.5, 36th session

Geneva, 4-6 September 2023

Lukasz Wyrowski, secretariat



Mandate

- to serve as a platform to collect data on national cycling infrastructure, to analyze the data and to propose routes in the region of the Economic Commission for Europe (ECE), based on existing national cycling routes, to form an ECE cycling network (Task 1)
- to elaborate common definitions for various types of cycling infrastructure as well as new road signs for signposting the cycling routes (Task 2)

Task 1 – towards the network

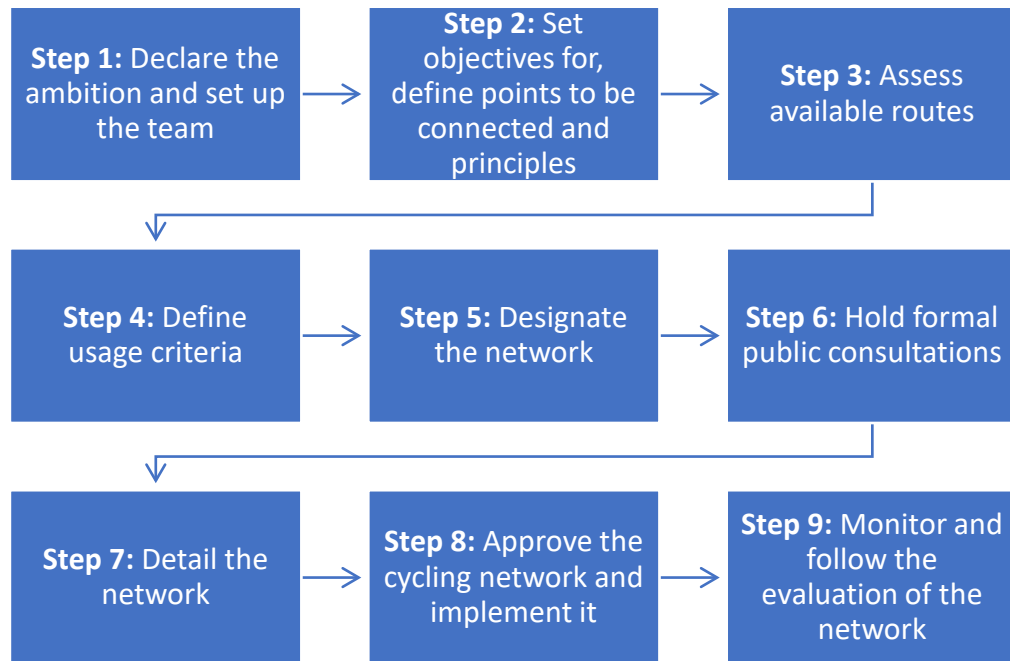


Three principles for devising UNECE cycling network:

1. Relevant EuroVelo route or routes can serve as a backbone for UNECE routes on a territory of an UNECE country if and as appropriate for the country
2. UNECE network routes should be long-distance routes, and
3. UNECE network routes should enable cross-border connectivity

Task 1 – towards the network

Draft guide for designating national cycling network



| <i>User category/volume</i> | <i>Up to 750 cyclists/day</i> | <i>500 – 3000 cyclists/day</i> | <i>More than 2000 cyclists/day</i> |
|-----------------------------|-------------------------------|--------------------------------|------------------------------------|
| Regular | Basic cycle route (level 1) | Basic cycle route (level 1) | Main cycle route (level 2) |
| Occasional | Basic cycle route (level 1) | Main cycle route (level 2) | Cycle highway (level 3) |
| Demanding | Main cycle route (level 2) | Cycle highway (level 3) | Cycle highway (level 3) |

| | <i>Up to 30 km/h</i> | <i>31-50 km/h</i> | <i>51-65 km/h</i> | <i>70+ km/h</i> |
|--------------------|-----------------------|----------------------|----------------------|-----------------------|
| 1-500 pcu/day | Mixed traffic (1, 2) | Mixed traffic (1, 2) | Mixed traffic (1, 2) | Mixed traffic (1) |
| | Cycle street (2, 3) | Cycle track (3) | Cycle lane (2, 3) | Cycle lane (2) |
| 500-2000 pcu /day | Mixed traffic (1, 2) | Mixed traffic (1) | Mixed traffic (1) | Mixed traffic (1) |
| | Cycle street (2, 3) | Cycle lane (2) | Cycle lane (1, 2) | Cycle lane (1) |
| | | Cycle track (3) | Cycle track (2, 3) | Cycle track (1, 2, 3) |
| 2000-4000 pcu/day | Mixed traffic (1, 2) | Cycle lane (1, 2) | Cycle lane (1, 2) | Cycle lane (1) |
| | Cycle lane (2) | Cycle track (2, 3) | Cycle track (2, 3) | Cycle track (1, 2, 3) |
| | Cycle track (3) | | | |
| 4000-10000 pcu/day | Cycle lane (1, 2) | Cycle lane (1) | Cycle lane (1) | Cycle track |
| | Cycle track (1, 2, 3) | Cycle track (2, 3) | Cycle track (2, 3) | |
| > 10000 pcu/day | Cycle lane (1) | Cycle track | Cycle track | Cycle track |
| | Cycle track (1, 2, 3) | | | |

| <i>Minimum width</i> | <i>Basic cycle route</i> | <i>Main cycle route</i> | <i>Cycle highway</i> |
|------------------------------------|--------------------------|-------------------------|----------------------|
| One way cycle track | 1.5 m | 2.0 m | 3.0 m |
| Two way cycle track | 2.5 m | | |
| | (2.0 m?) | 3.0 m | 4.0 m |
| Cycle lane | 1.5 m | 2.0 m | 2.25 m |
| One way cycle and pedestrian track | 2.0 m | N/A | N/A |
| Two way cycle and pedestrian track | 3.0 m | N/A | N/A |
| Cycle street | N/A | 4.5 m | 4.5 m |

Task 2 – towards harmonized cycling infrastructure

Agreed definitions

- **Cycle track: compulsory & non-compulsory**
- Greenway
- (Advisory) **cycle lane**
- Sharrows
- 2-1 road
- Cycle street
- Contraflow cycling
- Bus-and-cycle lane
- Sidewalk with cycling allowed
- Agricultural / forestry / industry / water management road
- *Cycle highway (discussion ongoing)*

In focus:

Definition of a cycle

Implications from agreed definitions on the 1968 Convention on Road Signs and Signals / Road Traffic – *consultations planned with informal intergovernmental group of experts on road signs and signals (7 Nov 2023)*

Implications => inclusion of new signs/special regulations? Inclusion of new markings?

Task 2 – towards harmonized cycling infrastructure / implications example

Cycle track – an independent road or part of a road designated for cycles, signposted as such. A cycle track is separated from other roads or other parts of the same road by structural means.



The cycle track shall be signposted as **compulsory cycle track** if the track parameters, as per national legislation in force, allow for seamless cycle traffic on the track by all cyclist user categories at any time. The cycle track shall be signposted as **non-compulsory cycle track** in any other case.



**Next session (4th):
6-7 November 2023**

Thank you for your attention

