

*Final*  
*July 2019*  
CEFACT



UNITED NATIONS ECONOMIC COMMISSION FOR  
EUROPE

UNITED NATIONS CENTRE FOR TRADE FACILITATION  
AND ELECTRONIC BUSINESS (UN/CEFACT)

**BUSINESS REQUIREMENTS SPECIFICATION  
(BRS)**

**PREFERENTIAL E-CERTIFICATE OF ORIGIN  
BUSINESS DOMAIN: CERTIFICATION**

**UN/CEFACT International Trade and Business Domain: Regulatory &  
eGovernment**

FINAL DRAFT AFTER PUBLIC REVIEW

**Version: 0.1**

## Content

<i>Change Log</i> .....	4			
<b>1 BRS E-PREFERENTIAL CERTIFICATE OF ORIGIN</b> .....	<b>5</b>			
1.1 INTRODUCTION .....	5			
1.2 REFERENCES .....	5			
1.3 OBJECTIVE .....	6			
1.4 SCOPE .....	6			
1.5 CONTEXT .....	6			
<b>2 BUSINESS REQUIREMENTS ELABORATION</b> .....	<b>8</b>			
2.1 BUSINESS REQUIREMENTS LISTS.....	8			
2.2 DEFINITIONS BUSINESS TERMS .....	9			
2.3 BUSINESS REQUIREMENTS VIEW.....	9			
2.3.1 <i>Business</i> .....	<i>Domain</i> .....	<i>View</i> .....	9	
2.3.2 <i>Business</i> .....	<i>Process</i> .....	<i>Activity</i> .....	<i>Diagram</i> .....	10
2.3.3 <i>Business Partners View</i> – <i>Participants and Stakeholders</i> .....				13
2.3.4 <i>Class</i> .....			<i>diagram</i> .....	13
2.4 BUSINESS INFORMATION ENTITIES .....	15			
<b>APPENDIX 1: MAPPING DOCUMENT CERTIFICATE OF ORIGIN</b> .....	<b>26</b>			
<b>APPENDIX 2: EXAMPLE OF A PAPER PREFERENTIAL CERTIFICATE OF ORIGIN (AANZFTA)</b> .....	<b>31</b>			



## Document History

<b>Phase</b>	<b>Status</b>	<b>Date Last Modified</b>
Initial	concept	4 <sup>th</sup> September 2019

**Figure 1 – Document History**

## Change Log

The change log is designed to alert users about significant changes that occurred during the development of the BRS instance.

<b>Date of Change</b>	<b>Version</b>	<b>Paragraph Changed</b>	<b>Summary of Changes</b>

**Figure 2 - Document Change Log**

# 1 BRS e-Preferential Certificate of Origin

The current practice of the issuance and exchange of certificates of origin associated with the export of commodities represents a major opportunity to improve the integrity and business processes of exporters, importers and customs.

## 1.1 Introduction

International trade clearance procedures require a number of documents to be presented to satisfy the requirements of a variety of agreements. For example, in order for an importer to gain preferential tariff treatment under a Free Trade Agreement, the importer must present a valid Preferential Certificate of Origin (issued to the exporter) which states that the goods being imported qualify as originating in the country which is party to the agreement. The certificate of origin is issued the exporting regulator or by a body authorised by the regulator such as a chamber of commerce. The document is signed and uniquely marked by the issuing agency.

The trade clearance processes are managed largely by the transfer of paper documents which are subject to loss, alteration and forgery. The majority of the paper documents fit the same pattern; they are issued by a party in the exporting country but required by the regulator of the importing country. One significant reason that paper has been difficult to replace is that there is no direct trust relationship that allows an importing regulator to confirm the identity of the document issuer in the exporting jurisdiction.

National single windows and port community systems provide a streamlined and automated means for local entities (traders, third party logistics (3PL), agents, etc.) to interact with their local regulators. Many nations now have some kind of single window system but implementations are varied and usually unique to the local regulatory environment

This document seeks to initiate the process to standardise the data elements and message structure to facilitate global implementation of electronic exchange of preferential certificates of origin.

The outputs will be the harmonized XML schemas to support the information exchange for the business process.

The structure of this document is based on the structure of the UN/CEFACT Business Requirements Specification (BRS) document reference.

## 1.2 References

The list of specifications that have substantially influenced the development of the business requirements specification document, including formal standards from UN/CEFACT, OECD and other standards bodies, international treaties or agreements, industry sector and institutional specifications:

- *UN/CEFACT Modelling Methodology User Guide (CEFACT/TMG/N093)*
- *UN/CEFACT Business Requirement Specification Document Template (CEFACT/ICG/005)*

- *UN/CEFACT E-CERT BRS*
- *UN/CEFACT eQuality BRS*

### **1.3 Objective**

The objective of this document is to propose a standard for the Business Processes, the Business Transactions and the Information Entities used in the process of exchanging data on certification of the preferential origin of a product.

The Business process is the detailed description of the way participants intend to play their respective roles, establish business relations and share responsibilities to interact efficiently with the support of their respective information systems. Each Business transaction is realized by an exchange of messages. The context and sequence in which these messages are used is presented as use cases in the document.

The business documents are composed of Business Information Entities (BIE), which when available, are taken from the library of reusable business information entities and when not found, are proposed as new Business Information Entities. The contents of the business documents and the Business Information Entities are presented using class diagrams.

### **1.4 Scope**

The objective of this project is to standardise the business processes, the business transactions and the information entities of the electronic issuing and exchange of the preferential certificate of origin along the supply chain.

The project will describe the business process for the electronic exchange of:

- Data involved in the process of issuing a preferential certificate of origin between the producer / Third Party Logistics and the issuing agency
- The electronic exchange of preferential certificate of origin along the export-import process.

The data involved in the request for certification message contains:

- Information about the product (type, purpose, quantity, identification), locations and countries of export and import, parties involved and optional transport details

The relation between the physical product and the assigned electronic Preferential Certificate of Origin will be maintained along the supply chain.

The certificate is used by the exporter to prove the origin of the goods for taxation purposes. The certificate is checked by import customs.

### **1.5 Context**

<b>Context Category</b>	<b>Description</b>
Business Process	Process of issuance and exchange of a Preferential Certificate of

	Origin
Product Classification	Preferential Certificates of Origin
Industry Classification	Cross industry
Geopolitical	Global
Official Constraints	Bilateral or multi-lateral FTA
Business Process Role	National regulator, seller, buyer, agent
Supporting Role	None
System Capabilities	<p>Agreed level of security to protect data integrity</p> <p>Preferably a single windows implementation</p> <p>Database applications with uniquely identified electronic certificates with a system of authorizations and keys for retrieving information.</p>

**Figure 3 – Context Categories**

## 2 Business Requirements Elaboration

### 2.1 Business Requirements Lists

The business requirements and key business information is presented in the list below,

Number	Business Requirement Statement
A.1	Preferential Certificate of Origin data messages must use existing standards and methods allowing to provide the information required
A.2	A consignment contains one or more trade line items
A.3	The trade line items in the consignment contain one or more products.
A.4	The consignment is exported from one country and imported in another country
A.5	The customs administration, chamber of commerce or any other organisation which has been assigned the role of issuing agency issues the Preferential Certificate of Origin.
A.6	Preferential Certificates of Origin which may be uniquely identified with a code.
A.7	The exporter informs the importer and/or customs import by sending a message with all information needed concerning the preferential origin of the goods.
A.8	The customs import can verify the validity of a Preferential Certificate of Origin in the database of the issuing agency.
A.9	The parties involved (exporter, Third Party Logistics, importer, customs) are informed of the Pref Certificate of Origin ID and/or other relevant information concerning the preferential origin of the goods.
A.10	Interoperability between different systems
A.11	Independent of type of product and national and / or geographical locations

**Figure 4 – Business Requirement List**

Number	Data Domains
B1	Exchanged certificate
B2	Consignment
B3	Product

**Figure 5 – Data Domains**



## 2.2 Definitions Business Terms

The names and definitions of business terms used in the requirements specification are listed below:

Product	Any tangible output or service produced by human or mechanical effort or by a natural process.
Consignment	A separately identifiable collection of goods items to be transported or available to be transported from one consignor to one consignee via one or more modes of transport where each consignment is the subject of one single transport contract.
Trade line item	A collection of information specific to an item being used or reported on for trade purposes.
Party	An identified person, organization or agency.
Location	An identified geographical point or area where goods are loaded, unloaded or inspected.
Document	A collection of data for a piece of written, printed or electronic matter that provides information or evidence.
Preferential Certificate of Origin	Preferential Certificates of Origin may be issued by an agency or trader which has been assigned that role, to confirm that the goods concerned originated from that country.

Figure 6 – Sample Definitions of Terms

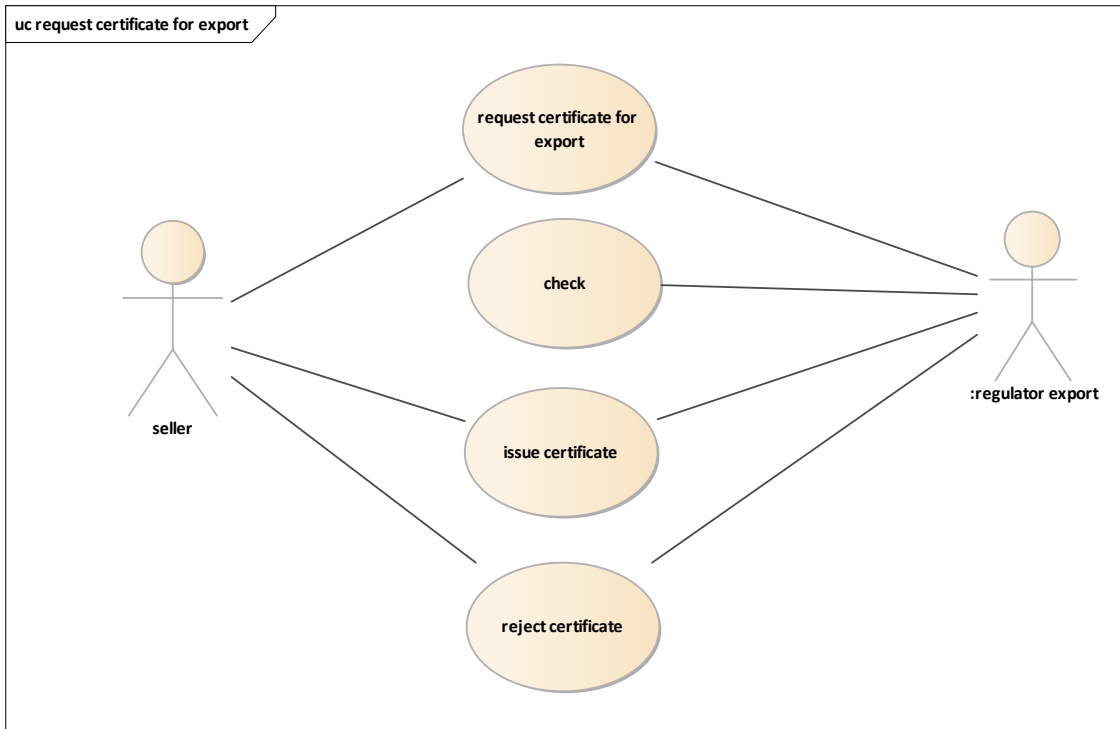
## 2.3 Business Requirements View

An outline description of the artefacts that form part of the BRS are given below and are described using the UMM terminology.

### 2.3.1 Business Domain View

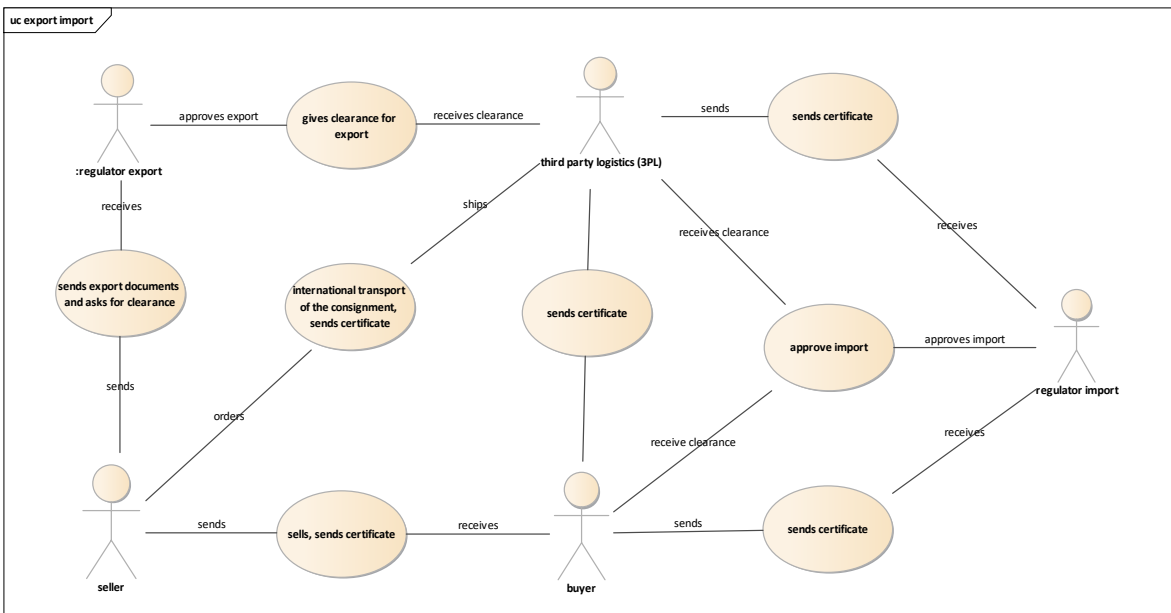
The business processes that are included in the Business Domain are identified and classified in this view.

The Business Domain view is represented by two Use Case Diagrams.



**Figure 7 - Business Domain Use Case Diagram 1 - Business Process ‘Request for e-Pref Certificate of Origin’**

The request process of the certificate in use case 1 is not in scope. Only the issuance of the certificate is in scope.



**Figure 8 - Business Domain Use Case Diagram 2 - Business Process ‘e-Pref Certificate of Origin information exchange in export and import processes’**

### 2.3.2 Business Process Activity Diagram

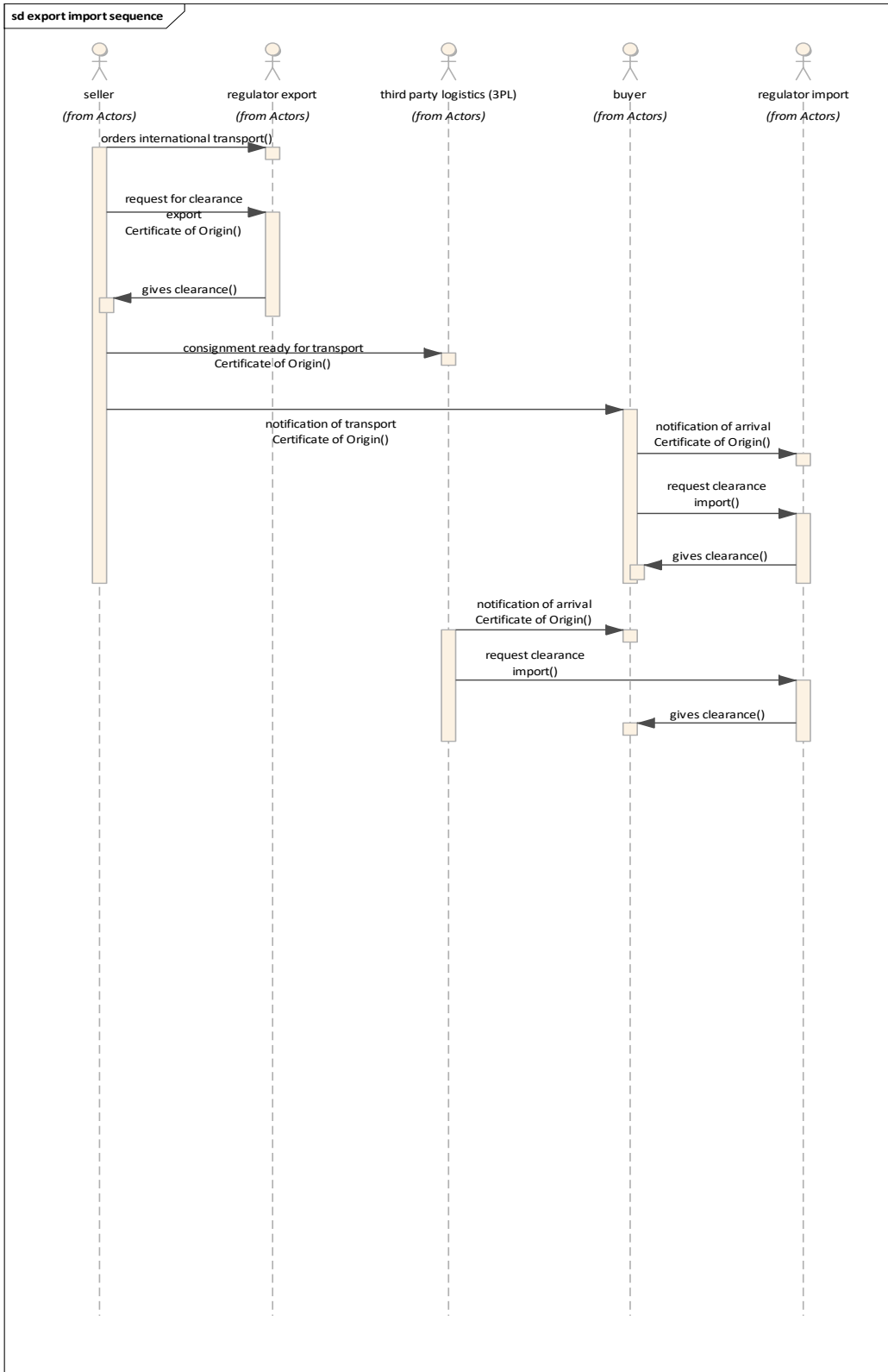
A Business Process Activity Diagram is used to model the dynamics of each business process, to depict a collaborative process involving the Business Partners and to denote

important states of business entities that are manipulated during the execution of a business process.

In the list below some activities are optional or may slightly differ in different countries.

**List of activities in the process of certification of origin**

The seller initiates the certification process by requesting a pref certificate of origin for a consignment from the regulator export.	Request for certification
The regulator export issues the certificate.	Issues e-Preferential Certificate of Origin
The seller orders the international transport of the consignment.	Orders international transport
The seller send export documents to the regulator export and asks for clearance. Note that exporting regulators often do not need to sight the CoO.	May send e-Preferential Certificate of Origin
Regulator export gives clearance for export	Gives clearance
The seller informs the buyer that goods are being transported and sends the certificate	Sends e-Preferential Certificate of Origin
Buyer informs the regulator import of the estimated date and time arrival of the consignment.	Sends notification of arrival
The buyer sends all documents for the shipment to regulator import and/or to any other relevant trade partner.	Request for clearance import Sends e-Preferential Certificate of Origin
Buyer asks the regulator import clearance for import of the consignment	Request for clearance import, e-Preferential Certificate of Origin
Regulator import gives clearance for import	Gives clearance

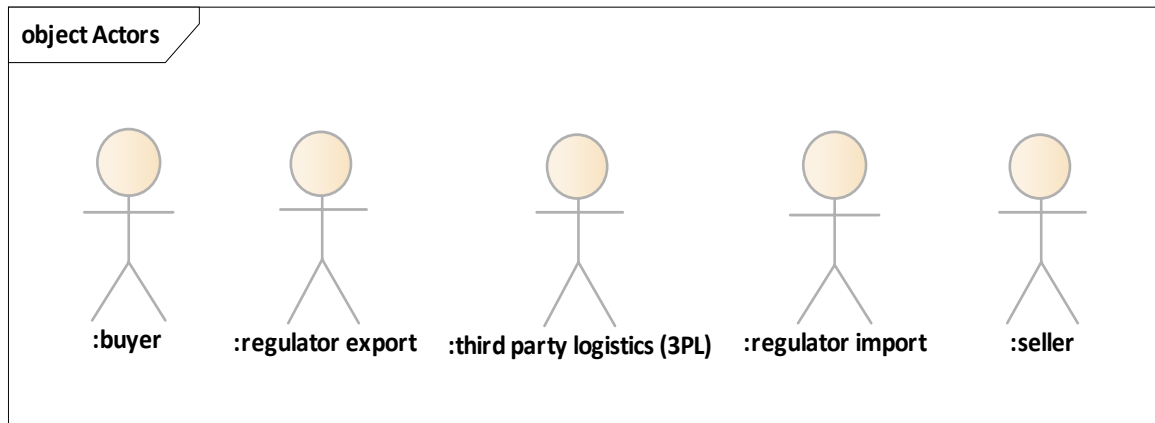


**Figure 9 – Business Process Activity Diagram**

\*Only activity steps with e-Certificate of Origin are in scope

Any additional documents (such as commercial invoices) required to accompany the Pref Certificate of Origin can be attached as Referenced Document.

### 2.3.3 Business Partners View – Participants and Stakeholders



**Figure 10 – Business Partner View Use Case Diagram**

### 2.3.4 Class diagram

This model represents the set of data for the electronic exchange of information about the Preferential Certificate of Origin.

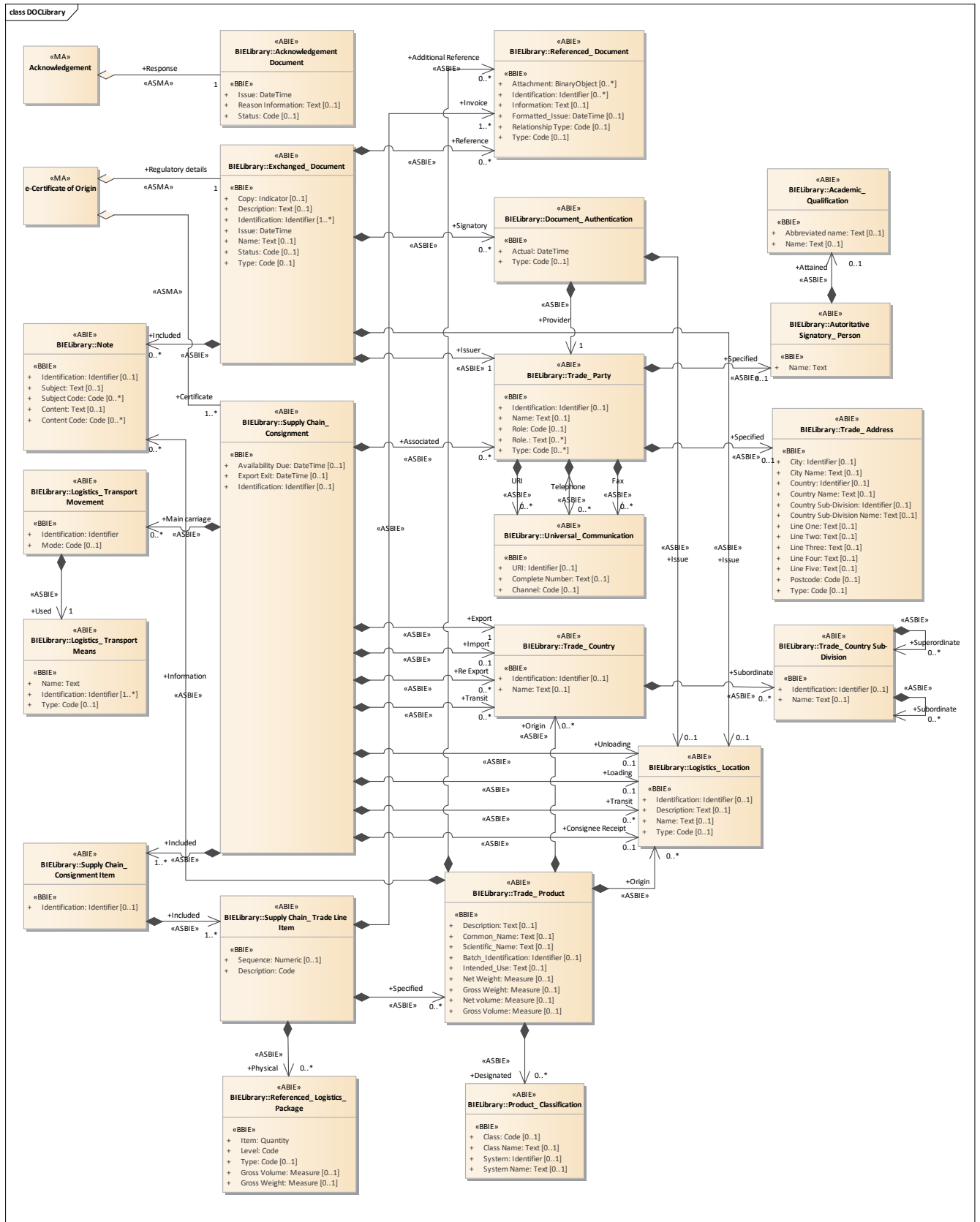


Figure 12 – Class diagram e-Preferential Certificate of Origin

## 2.4 Business information entities

### Exchanged\_Document

Description: A collection of data for a piece of written, printed or electronic matter that is exchanged between two or more parties.

Mult.	Business term	Rel.	Type	Description
[1..*]	Identification	Att.	Identifier	The unique identifier of this exchanged document.
[0..1]	Name	Att.	Text	The name, expressed as text, of this exchanged document.
[0..1]	Description	Att.	Text	The textual description of this exchanged document.
[0..1]	Type	Att.	Code	The code specifying the type of exchanged document.
[0..1]	Status	Att.	Code	The code specifying the status of this exchanged document.
[1]	Issue	Att.	Date Time	The date, time, date time, or other date time value of the issuance of this exchanged document.
[0..1]	Copy	Att.	Indicator	The indication of whether or not this exchanged document is a copy.

Mult.	Association	Description
[0..*]	Exchanged_Document. Included. Note	A note included in this exchanged document
[0..*]	Exchanged_Document. Reference. Referenced_Document	Other documents referenced by this exchanged document.
[0..*]	Exchanged_Document. Signatory. Authentication	A signatory document authentication for this exchanged document.
[0..1]	Exchanged_Document. Issue. Logistics_Location	The location where this exchanged document has been issued.
[1]	Exchanged_Document . Issuer. Trade_Party	The party that issues this exchanged document.

## Note

Description: A textual or coded description, such as a remark or additional information.

Mult.	Business term	Rel.	Type	Description
[0..1]	Subject	Att.	Text	The subject, expressed as text, of this note.
[0..*]	Content	Att.	Code	A code specifying the content of this note.
[0..1]	Content	Att.	Text	The content, expressed as text, of this note.
[0..*]	Subject	Att.	Code	A code specifying the subject of this note.
[0..1]	Identification	Att.	Identifier	The unique identifier for this note.

## Supply Chain\_Consignment

Description: A separately identifiable collection of goods items to be transported or available to be transported from one consignor to one consignee via one or more modes of transport where each consignment is the subject of one single transport contract.

Mult.	Business term	Rel.	Type	Description
[0..1]	Identification	Att.	Identifier	The unique identifier for this supply chain consignment.
[0..1]	Availability due	Att.	Date time	The date, time, date time, or other date time value when this supply chain consignment is due to be available.
[0..1]	Export exit	Att.	Date Time	The date, time, date time or other date time value when this supply chain consignment will exit, or has exited from the last port, airport, or border post of the country of export.

Mult.	Association	Description
[0..1]	Supply Chain_Consignment. Consignee receipt. Logistics_Location	The location at which this supply chain consignment will be or has been received by the consignee.
[1..*]	Supply Chain_Consignment. Included. Supply Chain_Consignment Item	A supply chain consignment item included in this supply chain consignment.
[0..*]	Supply Chain_Consignment. Main Carriage. Transport movement	A main carriage transport movement for this supply chain consignment.
[0..*]	Supply Chain_Consignment. Transit. Trade_Country	A transit country for this supply chain consignment.



[0..1]	Supply Chain_ Consignment. Import. Trade_ Country	The import country for this supply chain consignment.
[1]	Supply Chain_ Consignment. Export. Trade_ Country	The export country for this supply chain consignment.
[0..*]	Supply Chain_ Consignment. Associated. Trade Party	A trade party associated with this supply chain consignment.
[0..1]	Supply Chain_ Consignment. Unloading. Logistics_ Location	The logistics location where the supply chain consignment is unloaded.
[0..1]	Supply Chain_ Consignment. Loading. Logistics_ Location	The logistics location where the supply chain consignment is loaded.

### Supply Chain\_ Consignment Item

Description: An item within a supply chain consignment of goods separately identified for transport and customs purposes.

Mult.	Business term	Rel.	Type	Description
[0..1]	Identification.	Att.	Identifier	The unique identifier for this supply chain consignment item.

Mult.	Association	Description
[1..*]	Supply Chain_ Consignment Item. Included. Supply Chain_ Trade Line Item	A trade line item included in this supply chain consignment item.

### Trade\_Party

Description: An individual, group, or body having a role in a trade business function.

Mult.	Business term	Rel.	Type	Description
[0..1]	Identification	Att.	Identifier	The unique identifier for this trade party.
[0..*]	Type	Att.	Code	A code specifying the type of trade party that is independent of its role.
[0..1]	Name	Att.	Text	The name expressed as text for this trade party.
[0..1]	Role	Att.	Code	The code specifying the role of this trade party.
[0..*]	Role	Att.	Text	A role, expressed as text, for this trade party.

Mult.	Association	Description
[0..1]	Trade Party. Specified. Address	The postal address for this trade party
[0..1]	Trade Party. Specified. Authoritative	The person specified to sign on behalf of

<b>Mult.</b>	<b>Association</b>	<b>Description</b>
	Signatory_Person	this trade party
[0..*]	Trade_Party. Telephone . Universal_Communication	A telephone universal communication information for this trade party.
[0..*]	Trade_Party. Fax . Universal_Communication	A facsimile universal communication information for this trade party.
[0..*]	Trade_Party. URI . Universal_Communication	Uniform Resource Identifier (URI) universal communication information for a trade party.

### **Universal\_Communication**

Description: An exchange of information between persons and/or organizations.

<b>Mult.</b>	<b>Business term</b>	<b>Rel.</b>	<b>Type</b>	<b>Description</b>
[0..1]	URI	Att.	Identifier	The Uniform Resource Identifier (URI), such as a web or an email address, for this universal communication.
[0..*]	Complete number	Att	Text	The text string of characters that make up the complete number for this universal communication.

### **Trade\_Address**

Description: The location at which a particular trade related organization or person may be found or reached.

<b>Mult.</b>	<b>Business term</b>	<b>Rel.</b>	<b>Type</b>	<b>Description</b>
[0..1]	Postcode	Att.	Code	The code specifying the postcode in the address.
[0..1]	Line One	Att.	Text	The first free form line, expressed as text, of the address.
[0..1]	Line Two	Att.	Text	The second free form line, expressed as text, of the address.
[0..1]	Line Three	Att.	Text	The third free form line, expressed as text, of the address.
[0..1]	Line Four	Att.	Text	The fourth free form line, expressed as text, of the address.
[0..1]	Line Five	Att.	Text	The fifth free form line, expressed as text, of the address.
[0..1]	City name	Att.	Text	The name, expressed as text, of the city, town or village of this trade address.
[0..1]	Country	Att.	Identifier	The unique identifier of this country for this trade address.

[0..1]	Country name	Att.	Text	The name, expressed as text, of this country for this trade address.
[0..1]	Country Sub-Division	Att.	Identifier	The unique identifier of the country sub-division for this trade address.
[0..1]	Country Sub-Division Name	Att.	Text	The name, expressed as text, of the sub-division of a country for this trade address.
[0..1]	Trade_ Address. City. Identifier	Att.	Code	The identifier of the city for this trade address, such as United Nations Location Code (UNLOCODE).
[0..1]	Type	Att.	Code	The code specifying the postcode of trade address.

### Authoritative Signatory\_ Person

Description: A person who is authorized to sign a document, such as a customs officer or other government official.

Mult.	Business term	Rel.	Type	Description
[1]	Authoritative Signatory_ Person. Name.	Att.	Text	The name, expressed as text, of this authoritative signatory person.

Mult.	Association	Description
[0..1]	Authoritative Signatory_ Person. Attained. Academic Qualification	The academic qualification attained by this authoritative signatory person.

### Trade\_Country

Description: The area of land that belongs to a nation together with its properties such as population, political organization, etc., used or referenced for trade purposes.

Mult.	Business term	Rel.	Type	Description
[0..1]	Identification	Att.	Identifier	The unique identifier for this trade country (Reference ISO 3166 and UN/ECE Rec 3.).
[0..1]	Name	Att.	Text	The name, expressed as text, of this trade country.

Mult.	Association	Description
[0..*]	Trade_Country. Subordinate. Trade_Coutry Sub-Division	A trade country sub-division that is subordinate to this trade country, such as a state, a county, a canton, a province.

### Trade\_Country Sub-Division

Description: A political or physical area or region within the political boundaries of a country used or referenced for trade purposes.

Mult.	Business term	Rel.	Type	Description
[0..1]	Identification	Att.	Identifier	The unique identifier for this trade country sub-division
[0..1]	Name	Att.	Text	The name, expressed as text, of this trade country sub-division.
<hr/>				
Mult.	Association	Description		
[0..*]	Trade_Country Sub-Division. Superordinate. Trade_Country Sub-Division.	A superordinate country sub-division for this trade country sub-division.		
[0..*]	Trade_Country Sub-Division. Subordinate. Trade_Country Sub-Division.	A subordinate country sub-division within this trade country sub-division.		

### Referenced\_Logistics\_Package

Description: A referenced self-contained wrapping or container within which goods can be contained for logistics purposes

Mult.	Business term	Rel.	Type	Description
[1]	Item	Att.	Quantity	The number of referenced logistics packages at this level.
[1]	Level	Att.	Code	The code specifying the level of this referenced logistics package.
[0..1]	Type	Att.	Code	The code specifying the type of referenced logistics package.
[0..1]	Gross Weight	Att.	Measure	The measure of the gross weight (mass) of this referenced logistics package and its contents.
[0..1]	Gross Volume	Att.	Measure	The measure of the gross volume of this referenced logistics package.

### Trade\_Product

Description: Any tangible output or service produced by human or mechanical effort or by a natural process for trade purposes.

Mult.	Business term	Rel.	Type	Description
-------	---------------	------	------	-------------

[0..1]	Description	Att.	Text	The textual description for this trade product.
[0..1]	Net Weight	Att.	Measure	The measure of the net weight (mass) of this trade product.
[0..1]	Gross Weight	Att.	Measure	The measure of the gross weight (mass) of this trade product.
[0..1]	Net Volume	Att.	Measure	The measure of a net volume for this trade product.
[0..1]	Gross Volume	Att.	Measure	The measure of the gross volume for this trade product.
[0..1]	Batch_ Identification	Att.	Identifier	The batch identifier for this trade product.
[0..1]	Common_ Name	Att.	Text	The common name, expressed as text, for this trade product.
[0..1]	Scientific_ Name	Att.	Text	The scientific name, expressed as text, for this trade product.
[0..1]	Intended_ Use	Att.	Text	The intended use, expressed as text, for this trade product.

<b>Mult.</b>	<b>Association</b>	<b>Description</b>
[0..*]	Trade_ Product. Designated. Product_ Classification	A product classification designated for this trade product.
[0..*]	Trade_ Product. Origin. Trade_ Country	A country of origin for this trade product.
[0..*]	Trade_ Product. Additional_ Reference. Referenced_ Document	An additional referenced document for this trade product, such as a manual or a certificate.
[0..*]	Trade_ Product. Information. Note	An information note for this trade product.
[0..*]	Trade_ Product. Origin. Logistics_ Location	A location of origin for this trade product.

### **Product\_Classification**

Description: A systematic arrangement of products in classes or categories according to established criteria.

<b>Mult.</b>	<b>Business term</b>	<b>Rel.</b>	<b>Type</b>	<b>Description</b>
[0..1]	System	Att.	Identifier	The unique identifier of the classification system for this product classification.
[0..1]	System Name	Att.	Text	The name, expressed as text, of the classification system for this product classification.
[0..1]	Class	Att.	Code	The code specifying the class for this product classification.
[0..1]	Class Name	Att.	Text	The class name, expressed as text, for this product classification.

### **Logistics\_Transport Means**

Description: The devices used to convey goods or other objects from place to place during logistics cargo movements.

<b>Mult.</b>	<b>Business term</b>	<b>Rel.</b>	<b>Type</b>	<b>Description</b>
[0..1]	Type	Att.	Code	The code specifying a type of logistics means of transport (Reference UNECE Recommendation 28).
[1..*]	Identification	Att.	Identifier	An identifier of this logistics means of transport, such as the International Maritime Organization number a vessel.
[1]	Name	Att.	Text	The name, expressed as text, of this logistics means of transport.

### **Logistics\_Transport Movement**

Description: The conveyance (physical carriage) of goods or other objects used for logistics transport purposes.

<b>Mult.</b>	<b>Business term</b>	<b>Rel.</b>	<b>Type</b>	<b>Description</b>
[0..1]	Mode	Att.	Code	The code specifying the mode, such as by air, sea, rail, road or inland waterway, for this logistics transport movement.
[1]	Identification	Att.	Identifier	The unique identifier for this logistics transport movement, such as a voyage number, flight number, or trip number.

<b>Mult.</b>	<b>Association</b>	<b>Description</b>
[1]	Logistics_Transport Movement. Used. Transport Means	The transport means used for this logistics transport movement.

### Referenced\_Document

Description: Written, printed or electronic matter that is referenced.

Mult.	Business term	Rel.	Type	Description
[0..1]	Type	Att.	Code	The code specifying the type of referenced document.
[0..1]	Relationship Type	Att.	Code	The code specifying the type of relationship between this referenced document and another artefact, such as a replacement of an original document.
[0..*]	Identification	Att.	Identifier	An unique identifier for this referenced document.
[0..*]	Attachment	Att.	Binary Object	A binary object that is attached or otherwise appended to this referenced document.
[0..1]	Information	Att.	Text	The information expressed as text for this referenced document.
[0..1]	Formatted_Issue	Att.	Date Time	The formatted date, time, date time, or other date time value for the issuance of this referenced document.

### Document\_Authentication

Description: A proof that a document is genuine.

Mult.	Business term	Rel.	Type	Description
[0..1]	Type	Att.	Code	The code specifying the type of document authentication.
[1]	Actual	Att.	Date Time	The actual date, time, date time, or other date time value of this document authentication.

Mult.	Association	Description
[1]	Document_Authentication. Provider. Trade_Party	The trade party providing the document authentication.
[0..1]	Document_Authentication. Issue. Logistics_Location	The logistics location where the document authentication is issued.

### Academic\_Qualification

Description: An academic achievement that is officially recognized.

Mult.	Business term	Rel.	Type	Description
-------	---------------	------	------	-------------

[0..1]	Name	Att.	Text	The name, expressed as text, of this academic qualification.
[0..1]	Abbreviated Name	Att.	Text	The abbreviated name, expressed as text, of this academic qualification.

### Supply Chain\_Trade Line Item

Description: A collection of information specific to an item being used or reported on for supply chain trade purposes.

Mult.	Business term	Rel.	Type	Description
[0..1]	Sequence	Att.	Numeric	The sequence number for this supply chain trade line item.
[1]	Description	Att.	Code	The code specifying a description of this supply chain trade line item.

Mult.	Association	Description
[1..*]	Supply Chain_Trade Line Item. Invoice. Referenced_Document	An invoice document of this trade line item.

### Logistics\_Location

Description: A logistics related physical location or place.

Mult.	Business term	Rel.	Type	Description
[0..1]	Identification	Att.	Identifier	The unique identifier for this logistics related location, such as a United Nations Location Code (UNLOCODE) or GS1 Global Location Number (GLN).
[0..1]	Name	Att.	Text	The name, expressed as text, of this logistics related location.
[0..1]	Type	Att.	Code	The code specifying the type of this logistics related location.
[0..1]	Description	Att.	Text	The textual description of this logistics related location.

### Acknowledgement Document

Description: A document exchanged between parties for a business application level acknowledgement of the receipt of information.



<b>Mult.</b>	<b>Business term</b>	<b>Rel.</b>	<b>Type</b>	<b>Description</b>
[1]	Issue	Att.	Date Time	The date, time, date time, or other date time value of the issuance of this acknowledgement document.
[0..1]	Reason_Information	Att.	Text	The reason information expressed as text for this acknowledgement document.
[0..1]	Status	Att.	Code	The code specifying the status of this acknowledgement document.

## Appendix 1: Mapping Document Certificate of Origin

Information needs in e- Pref Certificate of Origin	ABIE, BBIE, ASBIE
Pref Certificate of Origin	<p>ABIE: Exchanged_Document</p> <p>BBIE:</p> <ul style="list-style-type: none"> <li>- Name</li> <li>- Description</li> <li>- Type</li> </ul>
Unique No certificate Number/code	<p>ABIE: Exchanged_Document</p> <p>BBIE:</p> <ul style="list-style-type: none"> <li>- Identification</li> <li>- Copy: indicator</li> </ul>
<p>Name exporter/buyer/producer/cons ignor/ consignee,...</p> <p>And/or Identification code, tax number</p> <p>Title</p>	<p>ABIE: Trade_Party</p> <p>BBIE:</p> <ul style="list-style-type: none"> <li>- Identification</li> <li>- Role</li> <li>- Type</li> <li>- Name</li> </ul> <p>ABIE: Supply Chain_Consignment</p> <p>ASBIE: Supply Chain_Consignment. Associated. Trade_Party</p>
Address	<p>ABIE: Trade_Address</p> <p>BBIE:</p> <ul style="list-style-type: none"> <li>- City</li> <li>- Trade_Country</li> <li>- Sub-Division</li> <li>- Line One, Two, Three, Four, Five</li> <li>- Postcode</li> <li>- Type</li> </ul> <p>ABIE: Trade_Party</p> <p>ASBIE: Trade_Party. Specified. Trade_Address</p>
Telephone number / fax / email	<p>ABIE: Universal_Communication</p> <p>BIE:</p> <ul style="list-style-type: none"> <li>- Complete number</li> <li>- URI</li> </ul> <p>ASBIE: Trade_Party. Telephone. Universal_Communication Trade_Party. Fax. Universal_Communication</p>

	Trade_Party. URI. Universal_Communication
Country of preferential origin (producing country)	<p>ABIE: Trade_Product</p> <p>ABIE: Trade_Country</p> <p>ABIE: Trade_Country Sub-Division</p> <p>ASBIE:</p> <p>Trade_Product. Origin. Trade_Country</p> <p>Trade_Product. Origin. Logistics_Location</p> <p>Trade_Country. Subordinate. Trade_Country Sub-Division</p> <p>Trade_Country Sub-Division. Subordinate. Trade_Country Sub-Division</p> <p>Trade_Country Sub-Division. Superordinate. Trade_Country Sub-Division</p>
Region or country of destination	<p>ABIE: Trade_Country</p> <p>BBIE:</p> <ul style="list-style-type: none"> <li>- Identification</li> <li>- Name</li> </ul> <p>ABIE: Trade_Country Sub-Division</p> <p>BBIE:</p> <ul style="list-style-type: none"> <li>- Identification</li> <li>- Name</li> </ul> <p>ABIE: Logistics_Location</p> <p>BBIE:</p> <ul style="list-style-type: none"> <li>- Identification</li> <li>- Name</li> </ul> <p>ABIE: Supply Chain_Consignment</p> <p>ASBIE:</p> <p>Supply Chain_Consignment. Export. Trade_Country</p> <p>Supply Chain_Consignment. Re Export. Trade_Country</p> <p>Supply Chain_Consignment. Transit. Trade_Country</p> <p>Supply Chain_Consignment. Consignee receipt. Logistics_Location</p> <p>Supply Chain_Consignment. Unloading. Logistics_Location</p> <p>Trade_Country. Subordinate. Trade_Country Sub-Division</p> <p>Trade_Country Sub-Division. Subordinate. Trade_Country Sub-Division</p> <p>Trade_Country Sub-Division. Superordinate. Trade_Country Sub-Division</p>
<p>Transport details:</p> <p>Means of transport</p> <p>Identifier of means of transport</p> <p>Name of the vessel</p> <p>Vessel / flight number / trip number</p>	<p>ABIE: Transport means</p> <p>BBIE:</p> <ul style="list-style-type: none"> <li>- Name (Text)</li> <li>- Type</li> <li>- Identification: Identifier</li> </ul> <p>ABIE: Logistics_Transport Movement</p> <p>BBIE:</p> <ul style="list-style-type: none"> <li>- Identification</li> <li>- Mode</li> </ul>

	<p>ABIE: Supply Chain_Consignment</p> <p>ASBIE:</p> <p>Supply Chain_Consignment. Main Carriage. Logistics_Transport Movement</p> <p>Logistics_Transport Movement. Used. Transport Means</p>
<p>Port / airport of loading (name)</p> <p>Port / airport of discharge (name)</p> <p>Shipment date</p>	<p>ABIE: Supply Chain_Consignment</p> <p>BBIE: Export Exit: Date time</p> <p>ABIE: Logistics_Location</p> <p>ASBIE:</p> <p>Supply Chain_Consignment. Loading. Logistics_Location</p> <p>Supply Chain_Consignment. Unloading. Logistics_Location</p> <p>Supply Chain_Consignment. Transit. Logistics_Location</p>
<p>Packages (number and kind)</p> <p>Quantity</p> <p>Weight</p> <p>Volume</p> <p>Date of invoice for each good</p> <p>Invoice numbers</p>	<p>ABIE: Supply Chain_Consignment Item</p> <p>BBIE:</p> <ul style="list-style-type: none"> <li>- Identification</li> </ul> <p>ABIE: Supply Chain_Trade Line Item</p> <p>BBIE:</p> <ul style="list-style-type: none"> <li>- Sequence</li> <li>- Description</li> </ul> <p>ABIE: Referenced_Document</p> <p>BBIE:</p> <ul style="list-style-type: none"> <li>- Identification</li> <li>- Formatted_Issue</li> </ul> <p>ABIE: Referenced_Logistics_Package</p> <p>BBIE:</p> <ul style="list-style-type: none"> <li>- Item: Quantity</li> <li>- Level</li> <li>- Type</li> <li>- Nominal Gross Volume</li> <li>- Nominal Gross Weight</li> </ul> <p>ASBIE:</p> <p>Supply Chain_Consignment. Included. Supply Chain_Consignment Item</p> <p>Supply Chain_Consignment Item. Included. Supply Chain_Trade Line Item</p> <p>Supply Chain_Trade Line Item. Physical. Referenced_Logistics_Package</p> <p>Supply Chain_Trade Line Item. Invoice. Referenced_Document</p>
<p>Type/nature of produce</p> <p>Harmonised system code (Rule of origin/origin criterion)</p>	<p>ABIE: Trade_Product</p> <p>BBIE:</p> <ul style="list-style-type: none"> <li>- Description</li> <li>- Common_Name</li> <li>- Scientific_Name</li> <li>- Intended_Use</li> </ul>

	<p>ABIE: Product_Classification</p> <p>BBIE:</p> <ul style="list-style-type: none"> <li>- Class Code</li> <li>- Class Name</li> <li>- System Identifier</li> <li>- System Name</li> </ul> <p>ABIE: Trade_Country</p> <p>ABIE: Trade_Country Sub-Division</p> <p>ABIE: Logistics_Location</p> <p>ASBIE:</p> <p>Supply_Chain Trade Line Item. Specified. Trade_Product</p> <p>Trade_Product. Designated. Classification</p> <p>Trade_Product. Origin. Trade_Country</p> <p>Trade_Country. Subordinate. Trade_Country Sub-Division</p> <p>Trade_Product. Origin. Logistics_Location</p>
<p>Marks, numbers, Weight Volume</p>	<p>ABIE: Trade_Product</p> <p>BBIE:</p> <ul style="list-style-type: none"> <li>- Description</li> <li>- Batch Identification</li> <li>- Net Weight</li> <li>- Gross Weight</li> <li>- Net Volume</li> <li>- Gross Volume</li> </ul> <p>ABIE: Referenced_Logistics_Package</p> <p>BBIE:</p> <ul style="list-style-type: none"> <li>- Nominal Gross Volume</li> <li>- Nominal Gross Weight</li> </ul>
<p>Declaration of pref origin Place of issue Date</p>	<p>ABIE: Exchanged_Document</p> <p>BBIE:</p> <ul style="list-style-type: none"> <li>- Status</li> <li>- Description</li> <li>- Type</li> <li>- Issue</li> </ul> <p>Exchanged_Document. Issue. Logistics_Location</p>
<p>Signatory name and title Signature Date Place of issue</p>	<p>ABIE: Exchanged-Document</p> <p>BBIE:</p> <ul style="list-style-type: none"> <li>- Date</li> <li>- Issue</li> </ul> <p>ABIE: Trade_Party</p> <p>BBIE:</p> <ul style="list-style-type: none"> <li>- Identification</li> </ul>

	<ul style="list-style-type: none"> <li>- Role</li> <li>- Type</li> <li>- Name</li> </ul> <p>ABIE: Autoritative_Signatory_Person</p> <p>BBIE:</p> <ul style="list-style-type: none"> <li>- Name: text</li> </ul> <p>ABIE: Document_Authentication</p> <p>BBIE:</p> <ul style="list-style-type: none"> <li>- Actual</li> <li>- Type</li> </ul> <p>ABIE: Academic_Qualification</p> <p>BBIE:</p> <ul style="list-style-type: none"> <li>- Name</li> <li>- Abbreviated name</li> </ul> <p>ASBIE:</p> <p>Document_Authentication. Provider. Trade_Party</p> <p>Trade_Party. Specified. Autoritative_Signatory Person</p> <p>Autoritative_Signatory Person. Attained. Academic_Qualification</p> <p>Exchanged_Document. Signatory. Document_Authentication</p> <p>Exchanged_Document. Issuer. Trade_Party</p>
Remarks Observations	<p>ABIE: Exchanged_Document</p> <p>ABIE: Referenced_Document</p> <p>BBIE:</p> <ul style="list-style-type: none"> <li>- Attachment</li> <li>- Identification</li> <li>- Information</li> <li>- Formatted_Issue</li> <li>- Relationship Type</li> <li>- Type</li> </ul> <p>ABIE: Note</p> <p>BBIE:</p> <ul style="list-style-type: none"> <li>- Identification</li> <li>- Subject</li> <li>- Subject Code</li> <li>- Content</li> <li>- Content Code</li> </ul> <p>ABIE: Trade_Product</p> <p>ASBIE:</p> <p>Exchanged_Document. Reference. Referenced_Document</p> <p>Exchanged_Document. Included. Note</p> <p>Trade_Product. Information. Note</p>

## Appendix 2: Example of a paper preferential certificate of origin (AANZFTA)

ORIGINAL

1. Goods Consigned from (Exporter's name, address and country)			Certificate No. <span style="float: right;">Form AANZ</span>		
2. Goods Consigned to (Importer's/ Consignee's name, address, country)			<b>AGREEMENT ESTABLISHING THE ASEAN – AUSTRALIA – NEW ZEALAND FREE TRADE AREA (AANZFTA)</b>  <b>CERTIFICATE OF ORIGIN</b> (Combined Declaration and Certificate)  Issued in ..... (Country) (see Overleaf Notes)		
3. Means of transport and route (if known) Shipment Date: Vessel's name/Aircraft etc.: Port of Discharge:			4. For Official Use <input type="checkbox"/> Preferential Treatment Given Under AANZFTA <hr/> <input type="checkbox"/> Preferential Treatment Not Given (Please state reason/s) <hr/> ..... Signature of Authorised Signatory of the Importing Country		
5. Item number	6. Marks and numbers on packages	7. Number and kind of packages; description of goods including HS Code (6 digits) and brand name (if applicable)	8. Origin Conferring Criterion (see Overleaf Notes)	9. Quantity (Gross weight or other measurement), and value (FOB) (see Overleaf Notes)	10. Invoice number(s) and date of invoice(s)
11. Declaration by the exporter The undersigned hereby declares that the above details and statements are correct; that all the goods were produced in ..... (country) and that they comply with the rules of origin, as provided in Chapter 3 of the Agreement Establishing the ASEAN-Australia-New Zealand Free Trade Area for the goods exported to ..... (importing country)  ..... Place and date, name, signature and company of authorised signatory			12. Certification On the basis of control carried out, it is hereby certified that the information herein is correct and that the goods described comply with the origin requirements specified in the Agreement Establishing the ASEAN-Australia-New Zealand Free Trade Area.        ..... Place and date, signature and stamp of Authorised Issuing Authority/ Body		
13. <input type="checkbox"/> Back-to-back Certificate of Origin			<input type="checkbox"/> Subject of third-party invoice	<input type="checkbox"/> Issued retroactively	
<input type="checkbox"/> De Minimis			<input type="checkbox"/> Accumulation		