

Final

May 31 2022

CEFACT/___/___



UNITED NATIONS ECONOMIC COMMISSION FOR EUROPE

UNITED NATIONS CENTRE FOR TRADE FACILITATION
AND ELECTRONIC BUSINESS (UN/CEFACT)

BUSINESS REQUIREMENTS SPECIFICATION (BRS)

Experience Programs Information Exchange Process

FINAL DRAFT AFTER PUBLIC REVIEW

Approved: UN/CEFACT Bureau decision 2206085 on June 1st 2022

Business Domain: Travel/Tourism Domain

Business Process: Experience Programs Information Exchange Process

Title: Experience Programs Technical Artefacts Project

UN/CEFACT Forum: International Trade Procedures

Version: 1.0

TABLE OF CONTENTS

Content

1	PREAMBLE	4
1.1	AUDIENCE.....	4
1.2	REFERENCE DOCUMENTS	4
1.3	OBJECTIVE	5
1.4	SCOPE	5
1.5	CHANGE LOG	6
2	BUSINESS REQUIREMENTS	7
2.1	BUSINESS REQUIREMENTS VIEWS	7
2.2	BUSINESS PROCESS ELABORATION – USE CASE DIAGRAM	7
2.2.1	<i>Process Scope</i>	7
2.2.2	<i>Use case: EPs information exchange</i>	7
2.3	INFORMATION FLOW DEFINITION – ACTIVITY DIAGRAM.....	8
2.3.1	<i>Action part canonical class diagram</i>	10
2.3.2	<i>EPs Information Requester (buying side) canonical class diagram</i>	11
2.3.3	<i>EPs Information Provider (supplying/selling side) canonical class diagram</i>	12
2.3.4	<i>Price part canonical data model</i>	12
2.3.5	<i>Payment part canonical class diagram</i>	13
2.4	BUSINESS RULES.....	14
2.5	BUSINESS INFORMATION ENTITY CLASS DIAGRAMS	14
2.5.1	<i>Action part BIEs class diagram</i>	14
2.5.2	<i>EPs Information Requester (buying side) BIEs class diagram</i>	14
2.5.3	<i>EPs Information Provider (supplying/selling side) BIEs class diagram</i>	15
2.5.4	<i>Price part BIEs class diagram</i>	16
2.5.5	<i>Payment part BIEs class diagram</i>	17
2.6	CORE COMPONENT BUSINESS DOCUMENT ASSEMBLY	17
2.6.1	<i>Business Document Components</i>	19
2.7	CODE LISTS DEVELOPED.....	38

TABLE OF FIGURES and TABLES

Table 2-1 Use case description EPs Information Exchange.....	8
Table 2-2 Activity diagram description between trading parties	9
Table 2-3 Message assembly	17
Table 2-4 BIEs of message components	18
Table 2-5 Business Document Components.....	19
Table 2-6 Code lists and values.....	38
Figure 1-1 EP comparison of conventional tours and new trends in tourism	4
Figure 2-1 Use case diagram - EPs Information Exchange.....	7
Figure 2-2 Activity diagram (EPs information requested and responded).....	9
Figure 2-3 Action part canonical class diagram.....	10
Figure 2-4 EPs Information Requester (buying side) canonical class diagram	11
Figure 2-5 EPs Information Provider (supplying/selling side) canonical class diagram	12
Figure 2-6 Price part canonical class diagram	13
Figure 2-7 Payment part canonical class diagram.....	13
Figure 2-8 Action part class diagram.....	14
Figure 2-9 EPs Information Requester (buying side) class diagram.....	15
Figure 2-10 EPs Information Provider (supplying/selling side) class diagram	16
Figure 2-11 Price part class diagram	17
Figure 2-12 Payment part class diagram	17

1 Preamble

After the Green Paper on Sustainable Tourism -Experience Programs was published by UN/CEFACT in April, 2019, the working experts of Travel/ Tourism Domain found it necessary to develop the technical artefacts on experience programs to make their actual trade available globally through their standardization activities. The project named as Experience Programs Technical Artefacts was approved by the Bureau in September, 2019

Much discussion had been made before the Green Paper was created, especially, on experience programs (EP's) or what they are and should be. They could be regarded as newly emerging travel related products in one aspect, and in the other, they could be service products developed even by non-travel related persons or corporations. In either case they are or will be created in local regions to vitalize their regional economy. And at the same time, it is expected that they could improve the QoL (Quality of Life) of people living in local areas or visitors coming there. Local people are and might be keen enough to sustain their environments by themselves.

It was also understood that any of the conventional tours, such as sightseeing tours in urban or rural areas, optional tours, etc. could not exist unless they could be developed in the same concept as EPs. Therefore, this project makes no difference between them whether they are EPs or conventional tours, etc., which means conventional tours are a part of EPs. This is shown in Figure 1-1.

EPs	Past	Present	New perspectives
Conventional tours	Sightseeing tours Optional tours (Optional add-ons to basic tour packages) Tours based on eco or green tourism		To vitalize regions To sustain environments
New trends in tourism		Agriculture tours Industry tours Health-related tours Sports tours Social tours Any kind of activity tours	To improve Quality of Life (QOL)

Figure 1-1 EP comparison of conventional tours and new trends in tourism

1.1 Audience

The audience of this document is all users who are interested in the Experience Programs Information Exchange process and information data.

1.2 Reference Documents

Knowledge and application of the following standards is crucial to the development of quality business requirements specifications. Other key references are shown in the appropriate part of the document.

- UMM Meta Model Core Module (Candidate for 2.0) 2009-01-30
- UMM Meta Model Foundation Module (Candidate for 2.0) 2009-01-30
- Core Components Technical Specification-Part 8 of the ebXML Framework V2.01(15 Nov. 2003)
- Core Components Technical Specification Technical Corrigendum V2.01, 12 Feb. 2007

- Core Components Data Type Catalogue V2.1 2008-04-08
- XML Naming and Design Rules 2.0 17 Feb., 2006
- UML Profile for Core Components, V1.0, Final Specification, 2008-01-16
- UN/CEFACT CC Library Version 2022 A
- UN/CEFACT Business Requirements Specification Version 1.5 (CEFACT/ICG/005)
- Reference Data Model (RDM) Guideline, Draft v1.0.0.2. 2016-12-15 Code Management User Guide, 2018-3-05

1.3 Objective

The objective of this document is to make EPs available and traded not only locally, but also globally and to standardize the exchanged data applied to trade EPs between trading parties. The data to be exchanged and the standardization process are defined in this document. The trading parties could be defined as a buying party of EPs, such as a consumer, a corporate person, an intermediary or a travel agent (hereinafter the buying side) and a supplying party of EPs, such as an EPs supplier, an information supplier, or an intermediary, etc. (hereinafter the supplying/selling side)

As EPs have been and will be usually created, and traded locally in a small scale, EPs suppliers desire to have any good means to trade them globally and to welcome global visitors to their regions. They have a confidence that their products will surely meet the needs of the visitors whether they are local or global. Yet at the same time they want to keep their own environments sustainable as best as possible. Therefore, they need to exchange information for this purpose between them and buying parties.

It is understood by the experts that in developing EPs technical artefacts the results of SLH (Small scaled Lodging House) related projects will be reutilized as much as possible, because they were developed by the Travel/Tourism Domain for the trade of small scaled lodging house products based on the ebXML specifications, The major difference is the type of traded product. However, EPs need a lot new data entities to be communicated between new trading parties.

And the concept of UN/SDGs (Sustainable Development Goals) will be and should be well considered when to create EPs. Necessary data on sustainability information will surely be communicated between trading parties, which necessitates new business data.

1.4 Scope

In this document what EPs are and how the business is performed by using what data are described. And then to facilitate EPs trade electronically between trading parties, basic diagrams and required business data are shown, which will then be detailed in this document for the use of electronic handling.

The basic frame of the document comes from the outputs of SLH (Small scaled Lodging House) related projects, which would be amended to meet the needs when they may not appropriate.

For EPs trade between business parties, such functions as searching, reserving, cancelling, changing, paying, etc. processes might be needed. These functions are the same functions as those of SLH related processes. But EPs suppliers offer their customers quite diversified products, which may need more new data to take care of in this document than those of SLH related processes.

Relevant codes necessary for the use of EPs data in processes will be provided in the specified code list. And Technical Implementation Guide in order to describe how the data are composed and used by system developers will also be provided in a separate document.

The use of these documents and relevant list developed in the project will surely be provided to any system developers to trade EPs.

1.5 Change log

Date of Change	Version	Changed	Summary of Changes
April 27, 2021	D. 08		Initial draft
June 15, 2021	D.085		Team input processed
Oct. 12, 2021	D. 0.9		Team input processed
Dec.17, 2021	D. 0.95		Team input processed
Jan. 31, 2022	D. 1.0		Public Review version
May 31, 2022	1.0		Public Reviews incorporated

2 Business Requirements

2.1 Business requirements views

EPs process and relevant data are described in this document to trade EPs between business parties.

2.2 Business process elaboration – Use case diagram

2.2.1 Process Scope

This process details the request and response of information used for EPs trade between an EPs Information Requester and an EPs Information Provider. Any EPs Information Requester can send the data to an EPs Information Provider for this purpose, and receive a response from the EPs Information Provider, if the requesting data are valid.

2.2.2 Use case: EPs information exchange

The use case diagram in a wider sense of EPs trade is shown in Figure 2-1. Each party of an EPs Information Requester or an EPs Information Provider could either be an individual or a corporate person, who could play multiple roles. For example, an EPs Information Requester could be a customer, a consumer, a travel agent, an intermediary, a payer, etc. and an EPs Information Provider could be an owner, a provider, an operator, a coordinator, a guide, a travel agent, an intermediary or sales company, a payee, a financial service provider, an insurance service provider, an online payment gateway, etc. It is noted that any person or a corporation of any business area, who wants to serve consumers could create EPs related products or even a single one and be an EPs Information Provider of that or those. This is not limited within conventional travel related business area.

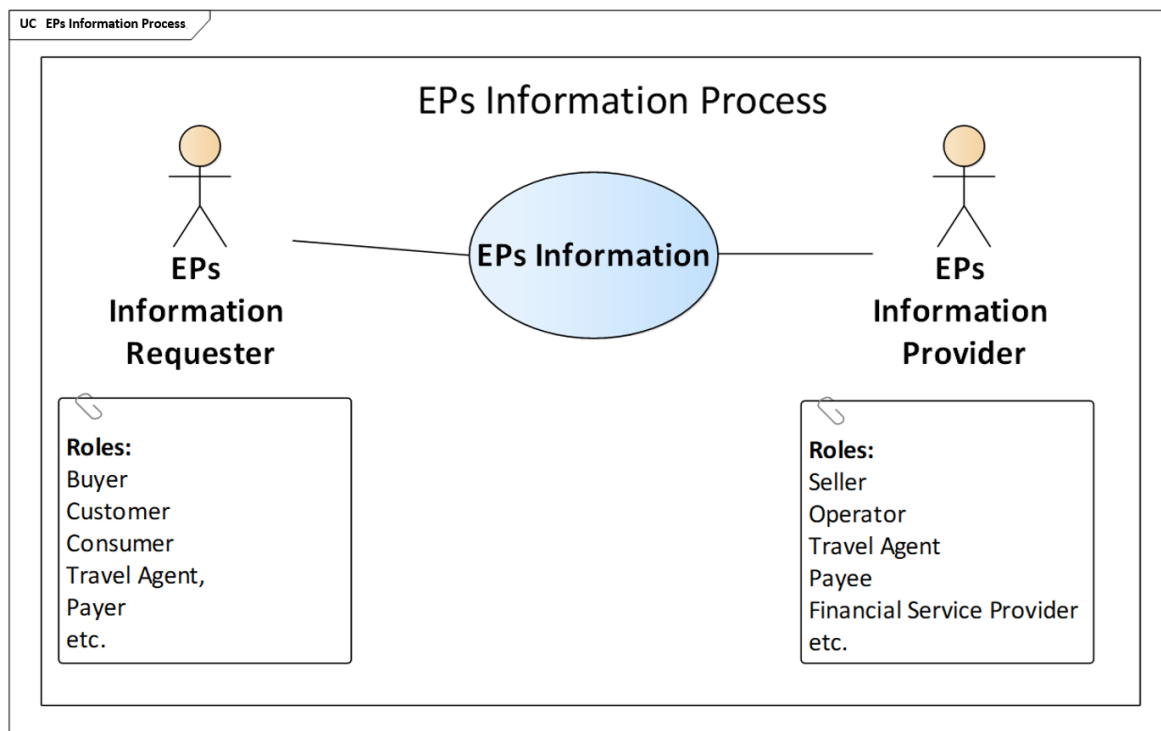


Figure 2-1 Use case diagram - EPs Information Exchange

In order to trade EPs, a variety of EPs related information could be exchanged between an EPs Information Requester and an EPs Information Provider. It could be a request or a response of information, such as of EPs product booking, its related price and payment, an

itinerary or an insurance document, a guide, and a lot other information. The Table 2-1 Use case description EPs Information Exchange shows the use case description.

Table 2-1 Use case description EPs Information Exchange

Use case description	
Business process name	EPs Information Exchange
Identifier	EPs Info REQ & RSP
Actors	EPs Information Requester and EPs Information Provider
Description	An EPs Information Requester requests information from an EPs Information Provider
Pre-condition	An EPs Information Requester does not have the needed EPs information which an EPs Information Provider could provide.
Post-conditions	An EPs Information Requester could confirm the EPs information requested has been exchanged.
Scenario	The exchange of EPs Information between EPs Information Requester and EPs Information Provider.
Remarks	An EPs Information Requester or an EPs Information Provider can either be a corporation or a private person.

2.3 Information flow definition – Activity diagram

The corresponding activity diagram of the use case in chapter 2.2.2, is presented in Figure 2-2.

This diagram is between trading parties, or an EPs Information Requester and an EPs Information Provider. Any EPs Information Requester can send his request information to an EPs Information Provider as his request and receive the response information from the EPs Information Provider as the response. This process is in line with common practice used between trading parties, or an EPs Information Requester and an EPs Information Provider, which is shown below.

Scenarios used here are depicted as in the following.

- EPs information requested by an EPs Information Requester
- EPs information responded by the EPs Information Provider

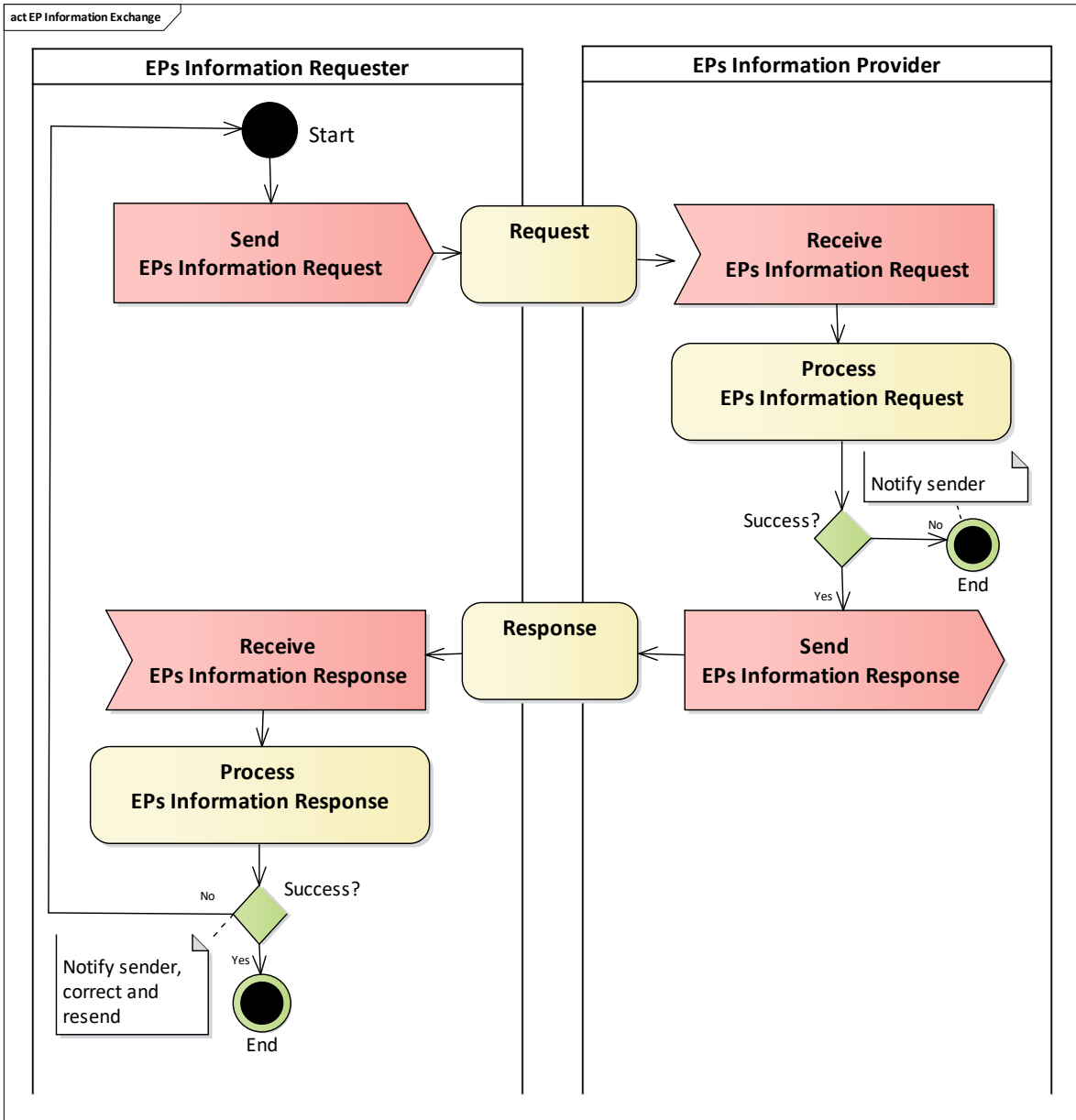


Figure 2-2 Activity diagram (EPs information requested and responded)

The activity diagram of EPs is described as in Table 2-2.

Table 2-2 Activity diagram description between trading parties

Activity description	
Categories	Description and Values
Business process	EPs information requested and responded between trading parties
Product Classification	EPs product or related information
Industry Classification	Not only travel/tourism industry but also any kind of industry, in which EPs could be developed and operated.
Geopolitical	Global
Official Constraint	None
Business Process Role	Roles of an EPs Information Requester or an EPs Information Provider
Supporting Role	There might be settlement function for payment information between business parties

Activity description	
System Capabilities	No limitations

The class diagrams for EPs information are developed in a manner that specify the cross industry reusable business information entities and the travel/tourism reusable business information entities.

The technical artefacts developed by SLH related projects could be reused as much as possible in EPs Information exchange. There are some new classes created for the use of EPs information exchange.

The class diagrams for EPs Information Process are shown below in Figure 2-3 up to Figure 2-7. The first of the diagram is Action part, Experience Program Action of which is the main class.

2.3.1 Action part canonical class diagram

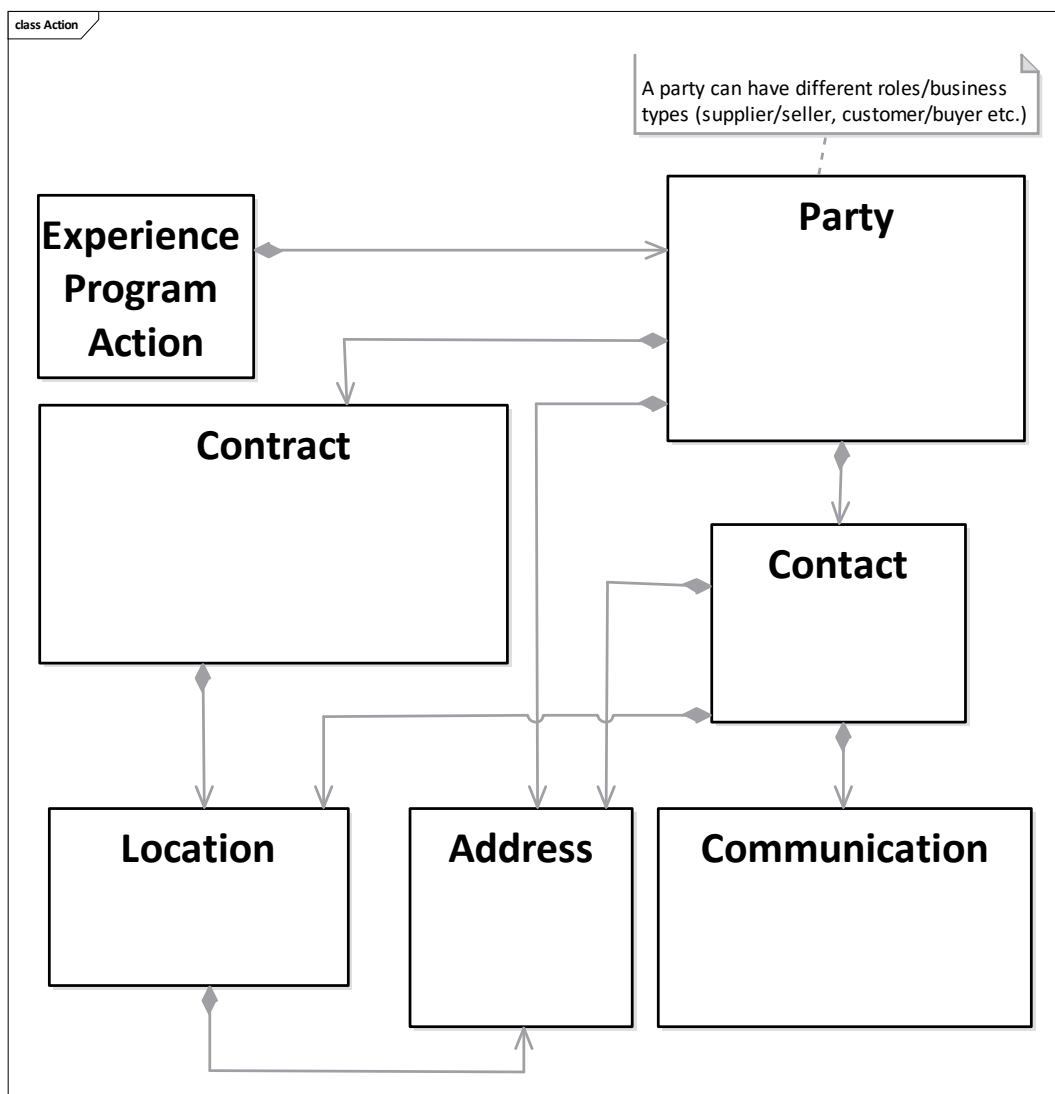


Figure 2-3 Action part canonical class diagram

Among the diagrams the following parts of class diagrams are depicted to show their parts.

2.3.2 EPs Information Requester (buying side) canonical class diagram

Figure 2-4 below is EPs Information Requester (buying side) class diagram.

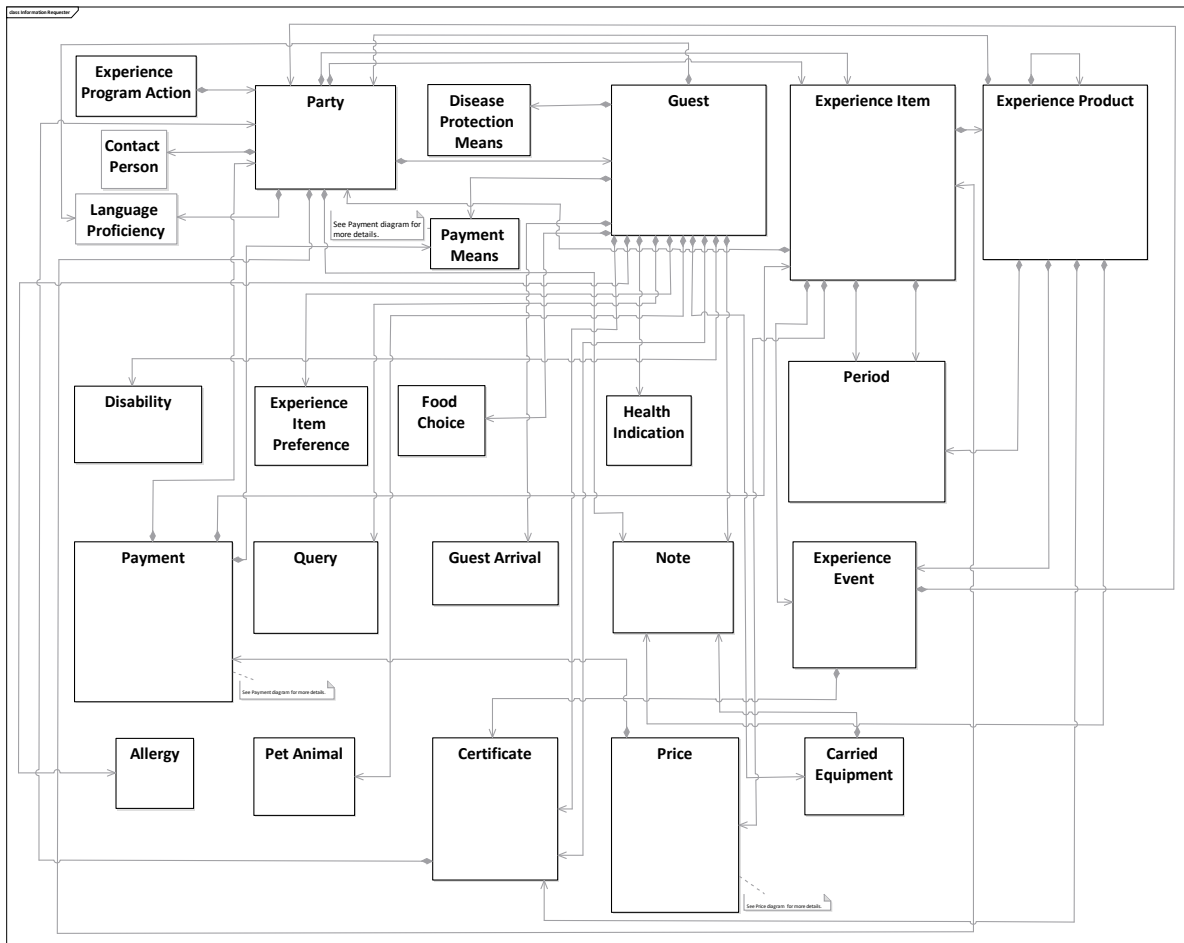


Figure 2-4 EPs Information Requester (buying side) canonical class diagram

2.3.3 EPs Information Provider (supplying/selling side) canonical class diagram

And then Figure 2-5 below is EPs Information Provider (supplying/selling side) class diagram.

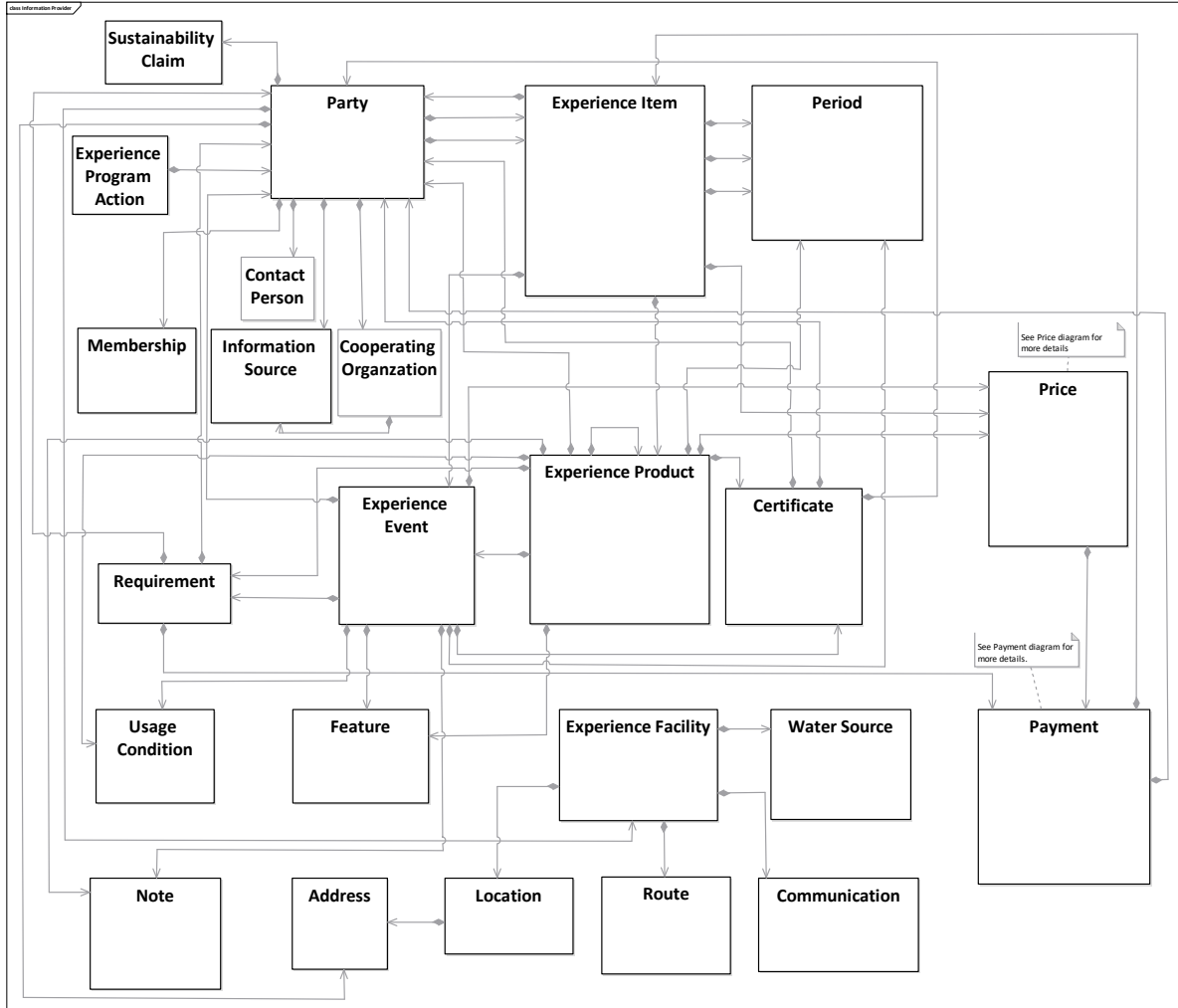


Figure 2-5 EPs Information Provider (supplying/selling side) canonical class diagram

2.3.4 Price part canonical data model

And Figure 2-6 below is Price part class diagram..

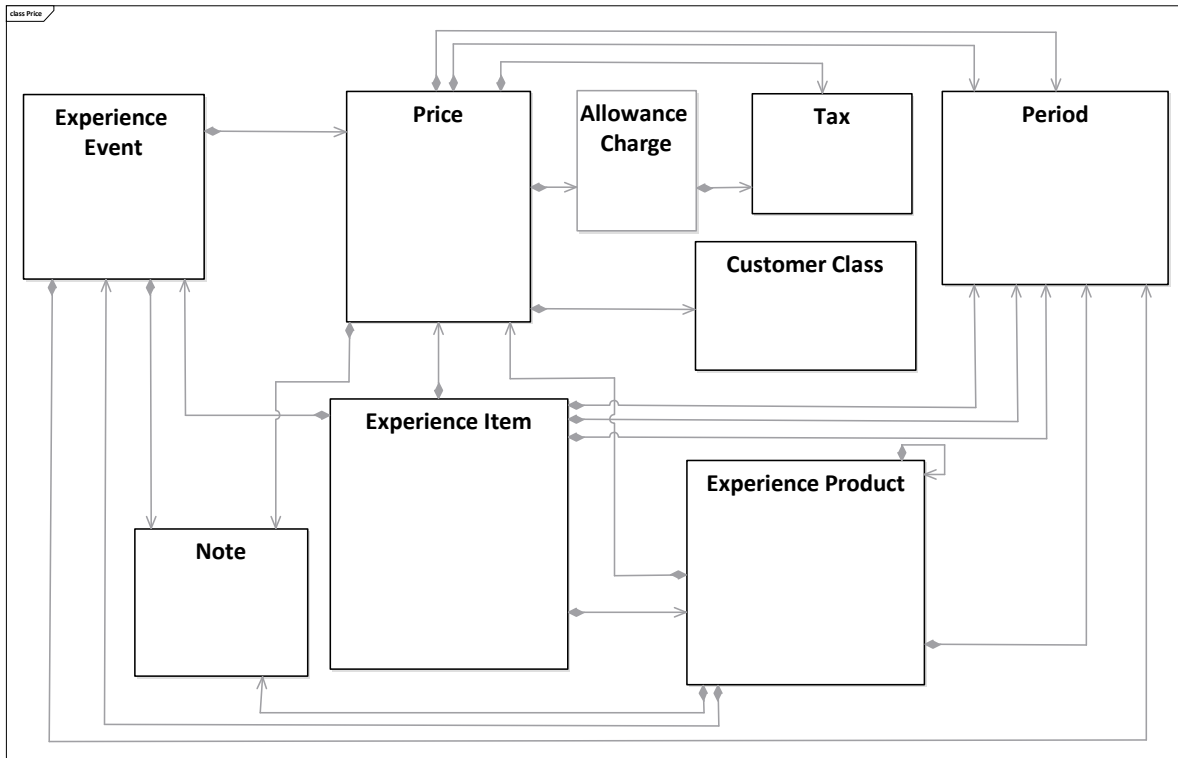


Figure 2-6 Price part canonical class diagram

2.3.5 Payment part canonical class diagram

The last class diagram is Payment part class diagram, Payment (Trade Settlement) of which is the main class.

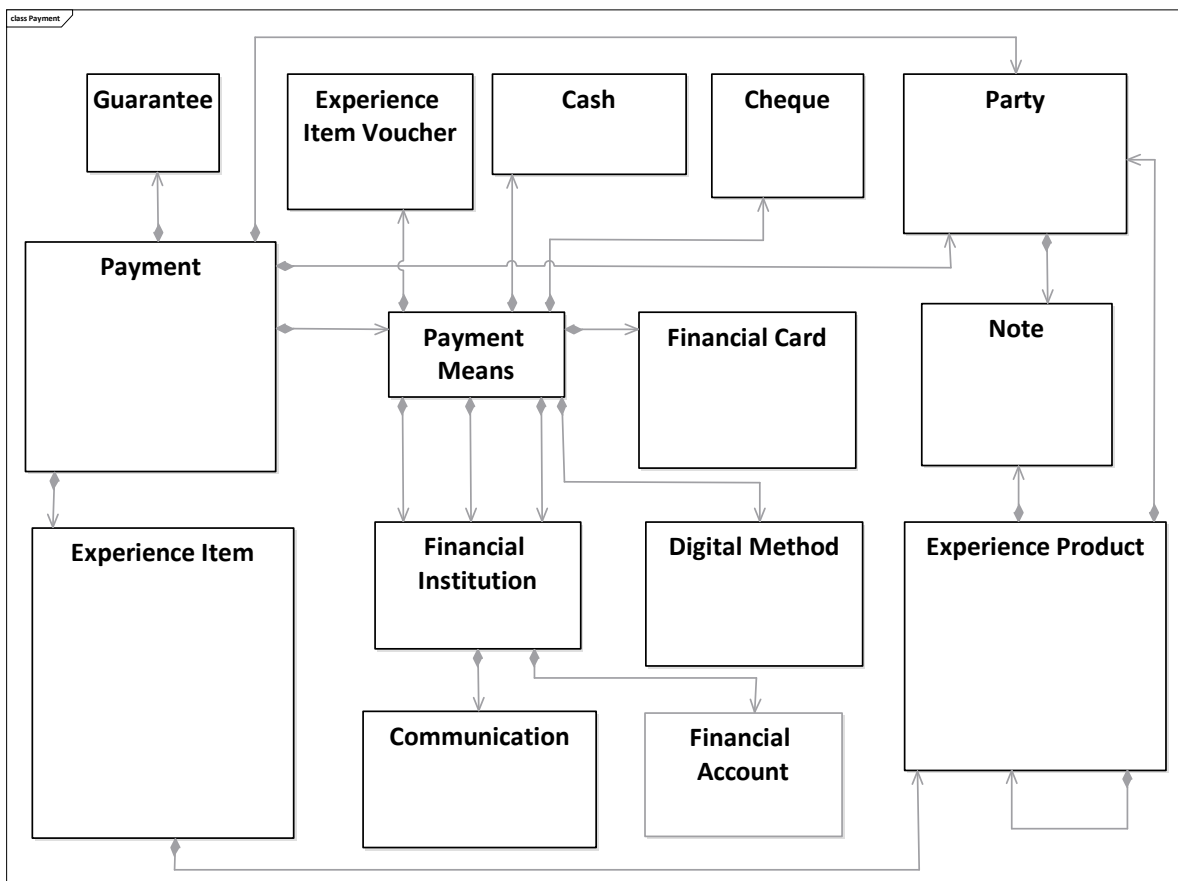


Figure 2-7 Payment part canonical class diagram

2.4 Business Rules

In the activity diagram in Figure 2-2, an EPs Information Requester may send request information as a request to an EPs Information Provider to search, reserve, cancel, amend or pay and the EPs Information Provider may send back the response information as the reply to the EPs Information Requester. This transaction may sometimes require a prior contract between the trading parties.

2.5 Business Information Entity class diagrams

2.5.1 Action part BIEs class diagram

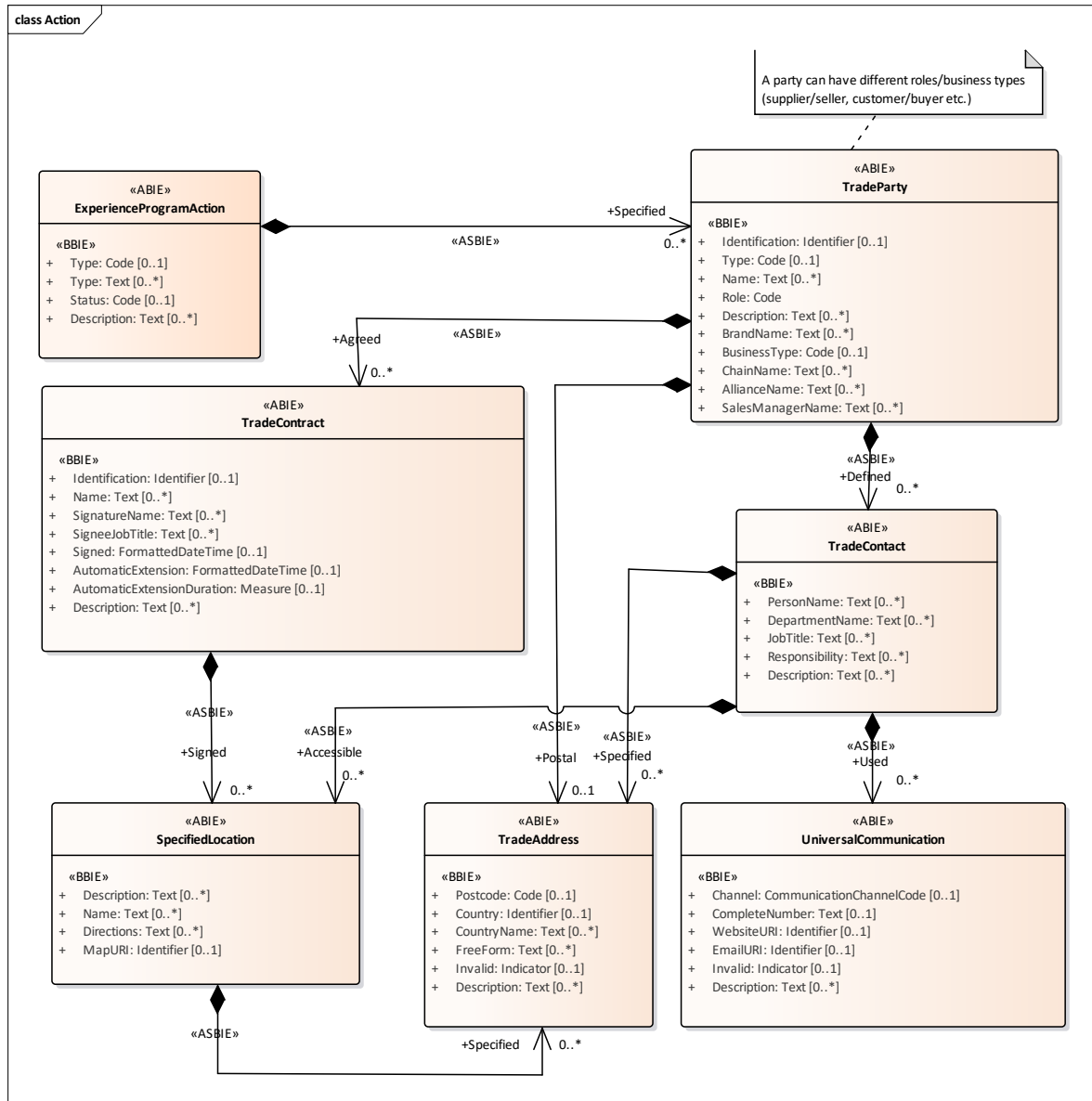


Figure 2-8 Action part class diagram

2.5.2 EPs Information Requester (buying side) BIEs class diagram

Then EPs Information Requester (buying side) BIEs class diagram is shown below.

Figure 2-11 Price part class diagram

2.5.5 Payment part BIEs class diagram

Below is Payment part BIEs class diagram.

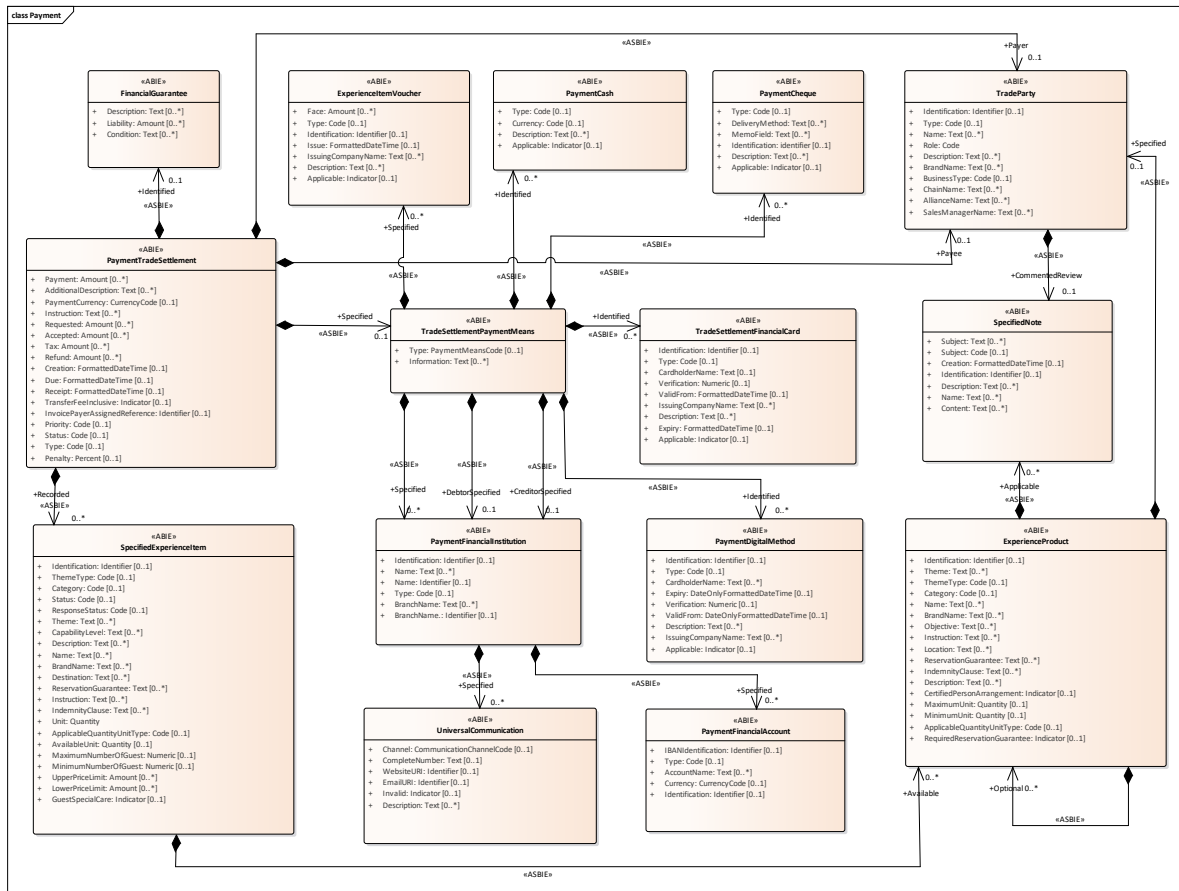


Figure 2-12 Payment part class diagram

2.6 Core Component Business Document Assembly

Two messages have been developed for the Experience Program Information Exchange Process:

- EP Information Request
- EP Information Response

Table 2-3 Message assembly

Entity	Name	Definition	Min	Max
Entity	EP Information Request	An EPs Information Requester (a buying side) request for information such as an experience item/product booking, its related price and payment, an itinerary or an insurance document, a guide, and other information from an EPs Information Provider (a supplying/selling side).		
Assoc	Exchanged Document Context	The scenario or setting of an exchanged document, such as its business process application context.	0	1
Assoc	Exchanged Document	A collection of data for a piece of written, printed or electronic matter that is exchanged between two or more parties.	1	1

Entity	Name	Definition	Min	Max
Assoc	Experience Program Action	Any type of action such as to search, reserve, pay, necessary to trade an organized program in which participants are involved in one or more types of happenings, such as adventure experience, business experience, wellness experience, etc.	1	1

Entity	Name	Definitio	Min	Max
Entity	EP Information Response	An EPs Information Provider (a supplying/selling side) response on the EPs information request received form the EPs Information Requester (the buying side).		
Assoc	Exchanged Document Context	The scenario or setting of an exchanged document, such as its business process application context.	0	1
Assoc	Exchanged Document	A collection of data for a piece of written, printed or electronic matter that is exchanged between two or more parties.	1	1
Assoc	Experience Program Action	Any type of action such as to search, reserve, pay, necessary to trade an organized program in which participants are involved in one or more types of happenings, such as adventure experience, business experience, wellness experience, etc.	1	1

Table 2-4 BIEs of message components

Type	Short Name	Definition	Data type	Min Occur.	Max Occur.
Entity	Exchanged Document Context	The scenario or setting of an exchanged document, such as its business process application context.			
Attr,	Test Indicator	The indication of whether or not this exchanged document context is a test.	Indicator	0	1
Assoc.	Business Process Parameter	A business process context parameter specified for this exchanged document context.		0	1
Assoc.	Scenario Parameter	A scenario context parameter specified for this exchanged document context.		0	1
Assoc.	Application Parameter	An application context parameter specified for this exchanged document context.		0	1
Assoc.	Guideline Parameter	A guideline context parameter specified for this exchanged document context.		0	1
Assoc.	Message Standard Parameter	The message standard document context parameter specified for this exchanged document context.		0	1
Assoc.	User Specified Parameter	A user specified document context parameter specified for this exchanged document context.		0	1
Entity	Document Context Parameter	A feature that is fixed for a particular document context.			
Attr.	ID	The ID of this document context parameter.	Identifier	0	1
Attr.	Value Text	The value of this document context parameter.	Text	0	1
Entity	Exchanged Document	A collection of data for a piece of written, printed or electronic matter that is exchanged between two or more parties.			
Attr.	ID	The ID of this exchanged document.	Identifier	1	1
Attr.	Type Code	The code specifying the type of exchanged document.	Code	0	1

Type	Short Name	Definition	Data type	Min Occur.	Max Occur.
Attr.	Status Code	The code specifying the status of this exchanged document.	Code	0	1
Attr.	Issue Date Time	The date, time, date time or other date time value for the issuance of this exchanged document.	Date Time	1	1
Attr.	Copy Indicator	The indication of whether or not this exchanged document is a copy.	Indicator	0	1
Attr.	Remark	A remark regarding this exchanged document.	Text	0	1
Attr.	Revision Date Time	The date, time, date time or other date time value for the revision of this exchanged document.	Date Time	0	1
Assoc.	Sender	The party that sends this exchanged document.		0	1
Assoc.	Recipient	A trade party that receives this exchanged document.		0	*

See for components of Experience Program Action (root element) in the next paragraph.

2.6.1 Business Document Components

The Experience Program Action component is part of the message. All the components associated directly or indirectly are listed below.

Table 2-5 Business Document Components

Type	Short Name	Definition	Min Occur.	Max Occur.	Data Type
ABIE	Contact Person	An individual human being in a position to give assistance or information.			
BBIE	Family Name	The name, expressed as text, that this contact person shares with members of his/her family.	0	*	Text
ABIE	Cooperating Organization	An organized structure set up for a particular purpose, such as a business, government body, department, charity, or financial institution that is working together with another organization, business, or person.			
BBIE	Name	A name, expressed as text, for this cooperating organization.	0	*	Text
BBIE	Role Code	The code specifying the role for this cooperating organization.	0	1	Code
ASBIE	Used Information Source	A specified cooperative information source used for or from this cooperating organization.	0	*	
ABIE	Disease Protection Means	A way to protect something, such as human beings, animals or environment, from getting infected or becoming ill.			
BBIE	Category Code	The code specifying the category of disease protection means.	0	1	Code
BBIE	Item Text	An item, expressed as text, for this disease protection means.	0	*	Text
BBIE	Restriction Text	A restriction, expressed as text, for this disease protection means.	0	*	Text
BBIE	Accepted Indicator	The indication of whether or not this disease protection means is accepted.	0	1	Indicator

BBIE	Description	A textual description of this disease protection means.	0	*	Text
ABIE	Experience Event	An involvement in an experience program in which some thing happens, such as a nature watching, woodware manufacturing, meditation, holiday trip, dinner, theme park visit, could be experienced.			
BBIE	Date Sequence Number	The date sequence number for this experience event.	0	1	Numeric
BBIE	Name	A name, expressed as text, for this experience event.	0	*	Text
BBIE	Basic Objective Text	A basic objective, expressed as text, for this experience event.	0	*	Text
BBIE	ID	The identifier of this experience event.	0	1	Identifier
BBIE	Choice Allowed Indicator	The indication of whether or not a choice is allowed for this experience event.	0	1	Indicator
BBIE	Reservation Required Indicator	The indication of whether or not a reservation is required for this experience event.	0	1	Indicator
BBIE	Location Text	A location, expressed as text, for this experience event.	0	*	Text
BBIE	Meeting Date Time	The meeting date, time, date time, or other date time value for this experience event.	0	1	Date Time
BBIE	Break Up Date Time	The break up date, time, date time, or other date time value for this experience event.	0	1	Date Time
BBIE	Instruction Text	An instruction, expressed as text, for this experience event.	0	*	Text
BBIE	Reservation Guarantee Text	A reservation guarantee, expressed as text, for this experience event.	0	*	Text
BBIE	Indemnity Clause Text	An indemnity clause, expressed as text, for this experience event.	0	*	Text
BBIE	Description	A textual description of this experience event.	0	*	Text
ASBIE	Provided Requirement	A specified requirement provided for this experience event.	0	*	
ASBIE	Required Usage Condition	The specified usage condition required for this experience event.	0	1	
ASBIE	Specified Party	A party specified for this experience event.	0	*	
ASBIE	Distinctive Feature	A distinctive feature specified for this experience event.	0	*	
ASBIE	Provided Certificate	A specified certificate provided for this experience event.	0	*	
ASBIE	Calculated Price	A calculated price for this experience event.	0	*	
ASBIE	Operational Period	An operational period specified for this experience event.	0	*	
ASBIE	Applicable Note	A specified note applicable for this experience event.	0	*	
ABIE	Experience Facility	A structure or place, such as a restaurant, hotel, theme park, hot spring bathing pool, parking lot, or meeting room, that provides a particular experience.			
BBIE	Name	A name, expressed as text, for this experience facility.	0	*	Text
BBIE	ID	The identifier of this experience facility.	0	1	Identifier

BBIE	Type Code	The code specifying the type of experience facility.	0	1	Code
BBIE	Type Text	A type, expressed as text, of this experience facility.	0	*	Text
BBIE	Architectural Style Text	An architectural style, expressed as text, of this experience facility.	0	*	Text
BBIE	Completion Date	The date of the completion of this experience facility.	0	1	Date Time
BBIE	Latest Renovation Date	The date of the latest renovation of this experience facility.	0	1	Date Time
BBIE	Description	A textual description of this experience facility.	0	*	Text
ASBIE	Used Water Source	A water source used by this experience facility.	0	*	
ASBIE	Available Route	An available route specified for this experience facility.	0	*	
ASBIE	Physical Location	A physical location specified for this experience facility.	0	*	
ASBIE	Specified Communication	A specified universal communication for this experience facility.	0	*	
ABIE	Experience Item Preference	An involvement in a happening, such as a theme park, a guided tour that is liked or wanted more than another item.			
BBIE	Preferred Item Text	A preferred item, expressed as text, for this experience item preference.	0	*	Text
BBIE	Disliked Item Text	A disliked item, expressed as text, for this experience item preference.	0	*	Text
BBIE	Priority Ranking Number	The priority ranking number for this experience item preference.	0	1	Numeric
BBIE	Description	A textual description of this experience item preference.	0	*	Text
ABIE	Experience Item Voucher	A printed piece of paper or an electronic document that can be used instead of money to pay for an experience, such as a tour, a trip or a meal in a restaurant.			
BBIE	Face Amount	A monetary value shown on the face of this experience item voucher.	0	*	Amount
BBIE	Type Code	The code specifying the type of experience item voucher.	0	1	Code
BBIE	ID	The identifier for this experience item voucher.	0	1	Identifier
BBIE	Issue Date Time	The date or date time of the issuance of this experience item voucher.	0	1	Date Time
BBIE	Issuing Company Name	A name, expressed as text, of the company issuing this experience item voucher.	0	*	Text
BBIE	Description	A textual description of this experience item voucher.	0	*	Text
BBIE	Applicable Indicator	The indication of whether or not this experience item voucher is applicable.	0	1	Indicator
ABIE	Experience Product	Any service that provides an involvement, such as an adventure experience, wellness experience, social or business activity experience.			
BBIE	ID	The identifier of this experience product.	0	1	Identifier
BBIE	Theme Text	A theme, expressed as text, for this experience product.	0	*	Text
BBIE	Theme Type Code	The code specifying the type of theme for this experience product.	0	1	Code

BBIE	Category Code	The code specifying the category of this experience product.	0	1	Code
BBIE	Name	A name, expressed as text, for this experience product.	0	*	Text
BBIE	Brand Name	A brand name, expressed as text, for this experience product.	0	*	Text
BBIE	Objective Text	An objective, expressed as text, for this experience product.	0	*	Text
BBIE	Instruction Text	An instruction, expressed as text, for this experience product.	0	*	Text
BBIE	Location Text	A location, expressed as text, specified for this experience product.	0	*	Text
BBIE	Reservation Guarantee Text	A reservation guarantee, expressed as text, for this experience product.	0	*	Text
BBIE	Indemnity Clause Text	An indemnity clause, expressed as text, for this experience product.	0	*	Text
BBIE	Description	A textual description of this experience product.	0	*	Text
BBIE	Certified Person Arrangement Indicator	The indication of whether or not a certified person arrangement is made for this experience product.	0	1	Indicator
BBIE	Maximum Unit Quantity	The maximum number of units of this experience product.	0	1	Quantity
BBIE	Minimum Unit Quantity	The minimum number of units of this experience product.	0	1	Quantity
BBIE	Applicable Quantity Unit Type Code	The code specifying the type of quantity unit applicable for this experience product.	0	1	Code
BBIE	Required Reservation Guarantee Indicator	The indication of whether or not this experience product requires a reservation guarantee.	0	1	Indicator
ASBIE	Included Experience Event	An event included within this experience product.	0	*	
ASBIE	Optional Experience Product	An optional product for this experience product.	0	*	
ASBIE	Provided Certificate	A certificate provided for this experience product.	0	*	
ASBIE	Provided Requirement	A requirement provided for this experience product.	0	*	
ASBIE	Distinctive Feature	A distinctive feature of this experience product.	0	*	
ASBIE	Operational Period	A operational period for this experience product.	0	*	
ASBIE	Required Usage Condition	A required usage condition for this experience product.	0	*	
ASBIE	Applicable Note	A note applicable for this experience product.	0	*	
ASBIE	Calculated Price	A calculated price for this experience product.	0	*	
ASBIE	Specified Party	A party specified for this experience product.	0	*	
ABIE	Experience Program Action	Any type of action, such as searching, reserving, or paying, necessary for an experience program, such as an adventure experience, a business experience, or a wellness experience.			
BBIE	Type Code	The code specifying the type of experience program action.	0	1	Code

BBIE	Type Text	A type, expressed as text, of experience program action.	0	*	Text
BBIE	Status Code	The code specifying the status of this experience program action.	0	1	Code
BBIE	Description	A textual description of this experience program action.	0	*	Text
ASBIE	Specified Party	A party specified for this experience program action.	0	*	
ABIE	Experience Program Action	Any type of action, such as searching, reserving, or paying, necessary for an experience program, such as an adventure experience, a business experience, or a wellness experience.			
BBIE	Type Code	The code specifying the type of experience program action.	0	1	Code
BBIE	Type Text	A type, expressed as text, of experience program action.	0	*	Text
BBIE	Status Code	The code specifying the status of this experience program action.	0	1	Code
BBIE	Description	A textual description of this experience program action.	0	*	Text
ASBIE	Specified Party	A party specified for this experience program action.	0	*	
ABIE	Financial Guarantee	An official promise or assurance to fulfil a financial obligation.			
BBIE	Description	The textual description of this financial guarantee.	0	*	Text
BBIE	Liability Amount	The monetary value of the liability in this financial guarantee.	0	*	Amount
BBIE	Condition Text	The condition, expressed as text, for this financial guarantee.	0	*	Text
ABIE	Guest Allergy	A guest condition of the abnormal reaction of the body to a previously encountered substance introduced by inhalation, ingestion, injection, or skin contact.			
BBIE	Name	A name, expressed as text, of this guest allergy.	0	*	Text
BBIE	Type Code	The code specifying the type of guest allergy.	0	1	Code
BBIE	Restriction Text	A restriction, expressed as text, related to this guest allergy.	0	*	Text
BBIE	Description	A textual description of this guest allergy.	0	*	Text
ABIE	Guest Carried Equipment	A tool or device carried by a guest for an activity.			
BBIE	Name	A name, expressed as text, for this guest carried equipment.	0	*	Text
BBIE	Type Code	The code specifying the type of guest carried equipment.	0	1	Code
BBIE	Restriction Text	A restriction, expressed as text, for this guest carried equipment.	0	*	Text
BBIE	Description	A textual description of this guest carried equipment.	0	*	Text
ASBIE	Specification Note	A specification note for this guest carried equipment.	0	*	
ABIE	Guest Disability	A physical or mental condition that limits a guest's movements, senses, or activities.			
BBIE	Name	A name, expressed as text, for this guest disability.	0	*	Text

BBIE	Type Code	The code specifying the type of guest disability.	0	1	Code
BBIE	Required Supporting Device Text	A supporting device, expressed as text, required for this guest disability.	0	*	Text
BBIE	Restriction Text	A restriction, expressed as text, for this guest disability.	0	*	Text
BBIE	Registered Date Time	The date, time, date time, or other date time value when this guest disability has been registered.	0	1	Date Time
BBIE	Description	A textual description of this guest disability.	0	*	Text
ABIE	Guest Food Choice	A guest's decision which food to buy or eat.			
BBIE	Name	A name, expressed as text, for this guest food choice.	0	*	Text
BBIE	Type Code	The code specifying the type of guest food choice.	0	1	Code
BBIE	Restriction Text	A restriction, expressed as text, for this guest food choice.	0	*	Text
BBIE	Description	A textual description of this guest food choice.	0	*	Text
ABIE	Guest Health Indication	A guest's physical or mental condition.			
BBIE	Status Text	A status, expressed as text, for this guest health indication.	0	*	Text
BBIE	Type Code	The code specifying the type of guest health indication.	0	1	Code
BBIE	Restriction Text	A restriction, expressed as text, for this guest health indication.	0	*	Text
BBIE	Description	A textual description of this guest health indication.	0	*	Text
ABIE	Guest Person	An individual guest.			
BBIE	ID	The identifier for this guest.	0	1	Identifier
BBIE	Name	The name, expressed as text, by which this guest is known.	0	*	Text
BBIE	Title	The title, expressed as text, associated with this guest, such as Doctor, Mr., Mrs., Ms.	0	*	Text
BBIE	Gender Code	The code specifying the gender of this guest, such as male, female.	0	1	Code
BBIE	Birth Date Time	The date, time, date time, or other date time value which specifies the birth date for this guest.	0	1	Date Time
BBIE	Description	The textual description of this guest.	0	*	Text
BBIE	Passport ID	The identifier of the passport of this guest.	0	1	Identifier
BBIE	Title Code	The code specifying the title of this guest person.	0	1	Code
BBIE	Role Code	The code specifying the role of this guest person.	0	1	Code
BBIE	Age Measure	The measure of the age of this guest person.	0	1	Measure
BBIE	Residence Country ID	The identifier of the residence country of this guest person.	0	1	Identifier
ASBIE	Notified Guest Arrival	An arrival notified for this guest person.	0	*	
ASBIE	Raised Special Query	A special query raised for this guest person.	0	*	
ASBIE	Applicable Note	A note applicable to this guest person.	0	*	

ASBIE	Accompanying Pet Animal	A pet animal accompanying this guest person.	0	*	
ASBIE	Guest Carried Equipment	Carried equipment specified for this guest person.	0	*	
ASBIE	Notified Guest Disability	A disability notified for this guest person.	0	*	
ASBIE	Notified Guest Allergy	An allergy notified for this guest person.	0	*	
ASBIE	Notified Disease Protection Means	A disease protection means notified for this guest person.	0	*	
ASBIE	Notified Guest Health Indication	A health indication notified for this guest person.	0	*	
ASBIE	Notified Experience Item Preference	An experience item preference notified for this guest person.	0	*	
ASBIE	Notified Guest Food Choice	A food choice notified for this guest person.	0	*	
ASBIE	Travel Insurance Certificate	A travel insurance certificate for this guest person.	0	*	
ASBIE	Carried Certificate	A certificate carried by this guest person.	0	*	
ASBIE	Claimed Personal Language Proficiency	Personal language proficiency skills claimed by this guest person.	0	*	
ASBIE	Specified Payment Means	A trade settlement payment means specified for this guest person.	0	*	
ABIE	Cash Payment	Coins, banknotes paid by the recipient of goods or services to the provider.			
BBIE	Type Code	The code specifying the type of cash used for payment.	0	1	Code
BBIE	Currency Code	The code specifying a currency of this cash used for payment.	0	1	Code
BBIE	Description	A textual description of cash used for this payment.	0	*	Text
BBIE	Applicable Indicator	The indication of whether or not this cash used for payment. is applicable.	0	1	Indicator
ABIE	Payment Cheque	A written payment order to a bank to pay the stated sum from the drawer's account.			
BBIE	Type Code	The code specifying the type of payment cheque.	0	1	Code
BBIE	Delivery Method Text	The delivery method, expressed as text, for this payment cheque.	0	*	Text
BBIE	Memo Field Text	The memo field, expressed as text, on this payment check.	0	*	Text
BBIE	ID	The identifier for this payment cheque.	0	1	Identifier
BBIE	Description	A textual description of this payment cheque.	0	*	Text
BBIE	Applicable Indicator	The indication of whether or not this payment cheque is applicable.	0	1	Indicator
ABIE	Digital Payment Method	The use of online and digital technologies to collect monetary payment amounts.			
BBIE	ID	The identifier of the digital method used for payment.	0	1	Identifier
BBIE	Type Code	The code specifying the type of digital method used for payment.	0	1	Code
BBIE	Cardholder Name	A cardholder's name, expressed as text, for this digital method used for payment.	0	*	Text
BBIE	Expiry Date Time	The expiry date or date time of this digital method used for payment.	0	1	Date Time
BBIE	Verification Number	The verification number for this digital method used for payment.	0	1	Numeric

BBIE	Valid From Date Time	The date or date time from when this digital method used for payment is valid.	0	1	Date Time
BBIE	Issuing Company Name	An issuing company name, expressed as text, for this digital method used for payment.	0	*	Text
BBIE	Description	A textual description of this digital method used for payment.	0	*	Text
BBIE	Applicable Indicator	The indication of whether or not this digital method used for payment is applicable.	0	1	Indicator
ABIE	Payment Financial Account	A specific business arrangement whereby monetary values pertaining to payment, collected or paid, are recorded.			
BBIE	IBAN ID	The unique International Bank Account Number (IBAN) identifier for this payment financial account.	0	1	Identifier
BBIE	Type Code	The code specifying the type of payment financial account.	0	1	Code
BBIE	Account Name	An account name, expressed as text, of this payment financial account.	0	*	Text
BBIE	Currency Code	The code specifying the currency of this payment financial account.	0	1	Code
BBIE	ID	The identifier for this payment financial account.	0	1	Identifier
ABIE	Payment Financial Institution	An institution that provides financial services and financial transactions for payment.			
BBIE	ID	The unique identifier for this payment financial institution.	0	1	Identifier
BBIE	Name	The name, expressed as text, for this payment financial institution.	0	*	Text
BBIE	Name ID	The identifier of the name for this payment financial institution.	0	1	Identifier
BBIE	Type Code	The code specifying the type of payment financial institution.	0	1	Code
BBIE	Branch Name	A branch name, expressed as text, for this payment financial institution.	0	*	Text
BBIE	Branch Name ID	The identifier of the branch name for this payment financial institution.	0	1	Identifier
ASBIE	Specified Communication	A communication specified for this payment financial institution.	0	*	
ASBIE	Payment Financial Account	A payment financial account specified for this payment financial institution.	0	*	
ABIE	Payment Trade Settlement	The information that enables the reconciliation of a payment with the item(s) that the payment is intended to settle, for example a commercial invoice.			
BBIE	Payment Amount	The monetary value of the payment for this trade settlement payment.	0	*	Amount
BBIE	Additional Description	The description, expressed as text, of additional information supplied to enable the matching of an entry with the items that the payment is intended to settle.	0	*	Text
BBIE	Payment Currency Code	The code specifying the currency for this payment trade settlement.	0	1	Code
BBIE	Instruction Text	An instruction, expressed as text, for this payment trade settlement.	0	*	Text
BBIE	Requested Amount	A monetary value requested for this payment trade settlement.	0	*	Amount

BBIE	Accepted Amount	A monetary value accepted for this payment trade settlement.	0	*	Amount
BBIE	Tax Amount	A monetary value of the tax related to this payment trade settlement.	0	*	Amount
BBIE	Refund Amount	A monetary value of the refund related to this payment trade settlement.	0	*	Amount
BBIE	Creation Date Time	The creation date, time, date time, or other date time value for this payment trade settlement.	0	1	Date Time
BBIE	Due Data Time	The due date, time, date time, or other date time value for this payment trade settlement.	0	1	Date Time
BBIE	Receipt Date Time	The receipt date, time, date time, or other date time value for this payment trade settlement.	0	1	Date Time
BBIE	Transfer Fee Inclusive Indicator	The indication of whether or not this payment trade settlement includes a transfer fee.	0	1	Indicator
BBIE	Invoice Payer Assigned Reference ID	The identifier of the invoice payer assigned reference of this payment trade settlement.	0	1	Identifier
BBIE	Priority Code	The code specifying the priority for this payment trade settlement.	0	1	Code
BBIE	Status Code	The code specifying the status of this payment trade settlement.	0	1	Code
BBIE	Type Code	The code specifying the type of this payment trade settlement.	0	1	Code
BBIE	Penalty Percentage	The penalty percentage related to this payment trade settlement.	0	1	Percent
ASBIE	Payer	The payer party for this payment trade settlement.	0	1	
ASBIE	Specified Payment Means	The payment means specified for this payment trade settlement.	0	1	
ASBIE	Identified Financial Guarantee	The financial guarantee identified for this payment trade settlement.	0	1	
ASBIE	Recorded Experience Item	A specified experience item recorded for this payment trade settlement.	0	*	
ABIE	Personal Language Proficiency	Skills in any principal method of human communication, consisting of words used in a structured and conventional way and conveyed by speech, writing, or gesture.			
BBIE	Speaking Proficiency Level Code	The code specifying the personal speaking proficiency level in this language.	0	1	Code
BBIE	Language Code	The code specifying the language for this personal language proficiency.	0	1	Code
ABIE	Pet Animal	A domestic or tamed animal that is kept for companionship or pleasure.			
BBIE	Category Code	The code specifying the category for this pet animal.	0	1	Code
BBIE	Allowed Indicator	The indication of whether or not this pet animal is allowed.	0	1	Indicator
BBIE	Restriction Text	A restriction, expressed as text, for this pet animal.	0	*	Text
BBIE	Description	A textual description of this pet animal.	0	*	Text
ABIE	Special Query	A special question or request for information.			
BBIE	ID	The identifier for this special query.	0	1	Identifier

BBIE	Submitted Date Time	The date, time, date time, or other date time value when this special query was submitted.	0	1	Date Time
BBIE	Submitting Person Name	The name, expressed as text, of the person submitting this special query.	0	*	Text
BBIE	Subject Text	The subject, expressed as text, of this special query.	0	*	Text
BBIE	Content Text	The content, expressed as text, of this special query.	0	*	Text
BBIE	Version ID	The identifier of the version for this special query.	0	1	Identifier
BBIE	Response Date Time	The date, time, date time, or other date time value of the response for this special query.	0	1	Date Time
BBIE	Response Status Code	The code specifying the response status for this special query.	0	1	Code
ABIE	Specified Certificate	A document issued by a government, public organization or association to certify a property of a person, entity, process or object.			
BBIE	Type Code	A code specifying a type of specified certificate.	0	*	Code
BBIE	Category Code	A code specifying a category for this specified certificate.	0	*	Code
BBIE	Description	A textual description of this specified certificate.	0	*	Text
BBIE	Purpose Code	A code specifying a purpose of this specified certificate.	0	*	Code
BBIE	Issue Date Time	The issue date, time, date time, or other date time value for this specified certificate.	0	1	Date Time
BBIE	Expiry Date Time	The expiry date, time, date time, or other date time value for this specified certificate.	0	1	Date Time
BBIE	Name	A name, expressed as text, for this specified certificate.	0	*	Text
BBIE	Capability Level Text	A capability level, expressed as text, in this specified certificate.	0	*	Text
BBIE	Available Language Code	A code specifying an available language for this specified certificate.	0	*	Code
BBIE	Number Of Certified Persons	The number of certified persons for this specified certificate.	0	1	Quantity
BBIE	Applicable Geographic Region Text	A geographic region, expressed as text, applicable for this specified certificate.	0	*	Text
BBIE	Required Indicator	The indication of whether or not this specified certificate is required.	0	1	Indicator
BBIE	Effective From Date Time	The date, time, date time, or other date time value from which this specified certificate is effective.	0	1	Date Time
ASBIE	Certified Party	The certified party for this specified certificate.	0	1	
ASBIE	Issuer Party	The issuer party for this specified certificate.	0	1	
ASBIE	Providing Party	The party, other than the issuer, providing this specified certificate.	0	1	
ABIE	Specified Customer Class	The conditions and requirements of the type of person who may use or purchase a product or service.			

BBIE	Category Code	The code specifying the category, such as adult or child, of this specified customer class.	0	1	Code
BBIE	Category Name	A category name, expressed as text, of this specified customer class.	0	*	Text
BBIE	Upper Age Limit Number	The value, expressed as a number of years, for the upper age limit for the category of this specified customer class.	0	1	Numeric
BBIE	Lower Age Limit Number	The value, expressed as a number of years, for the lower age limit for the category of this specified customer class.	0	1	Numeric
BBIE	Gender Code	The code specifying the gender in this specified customer class.	0	1	Code
BBIE	Meal Service Category Code	The code specifying the meal service category for this specified customer class.	0	1	Code
BBIE	Special Bedding Service Offered Indicator	The indication of whether or not special bedding service is offered for this specified customer class.	0	1	Indicator
BBIE	Description	A textual description of this specified customer class.	0	*	Text
ABIE	Experience Item	A collection of information specific to the involvement of a person or persons in a happening, such as a theme park, a guided tour being used or reported on for trade purposes.			
BBIE	ID	The identifier of this specified experience item.	0	1	Identifier
BBIE	Theme Type Code	The code specifying the type of theme for this specified experience item.	0	1	Code
BBIE	Category Code	The code specifying the category for this specified experience item.	0	1	Code
BBIE	Status Code	The code specifying the status for this specified experience item.	0	1	Code
BBIE	Response Status Code	The code specifying the response status for this specified experience item.	0	1	Code
BBIE	Theme Text	A theme, expressed as text, for this specified experience item.	0	*	Text
BBIE	Capability Level Text	A capability level, expressed as text, for this specified experience item.	0	*	Text
BBIE	Description	A textual description of this specified experience item.	0	*	Text
BBIE	Name	A name, expressed as text, of this specified experience item.	0	*	Text
BBIE	Brand Name	A brand name, expressed as text, of this specified experience item.	0	*	Text
BBIE	Destination Text	A destination, expressed as text, for this specified experience item.	0	*	Text
BBIE	Reservation Guarantee Text	A reservation guarantee, expressed as text, for this specified experience item.	0	*	Text
BBIE	Instruction Text	An instruction, expressed as text, for this specified experience item.	0	*	Text
BBIE	Indemnity Clause Text	An indemnity clause, expressed as text, for this specified experience item.	0	*	Text
BBIE	Unit Quantity	The number of units for this specified experience item.	0	1	Quantity
BBIE	Applicable Quantity Unit Type Code	The code specifying the type of quantity unit applicable for this specified experience item.	0	1	Code

BBIE	Available Unit Quantity	The number of units available for this specified experience item.	0	1	Quantity
BBIE	Maximum Number Of Guests	The maximum number of guests for this specified experience item.	0	1	Quantity
BBIE	Minimum Number Of Guests	The minimum number of guests for this specified experience item.	0	1	Quantity
BBIE	Upper Price Limit Amount	A monetary value of an upper price limit of this specified experience item.	0	*	Amount
BBIE	Lower Price Limit Amount	A monetary value of a lower price limit of this specified experience item.	0	*	Amount
BBIE	Guest Special Care Indicator	The indication of whether or not guest special care is applicable for this specified experience item.	0	1	Indicator
ASBIE	Specified Party	A party specified for this specified experience item.	0	*	
ASBIE	Available Experience Product	An available product for this specified experience item.	0	*	
ASBIE	Available Period	An available period for this specified experience item.	0	*	
ASBIE	Applicable Period	An applicable period for this specified experience item.	0	*	
ASBIE	Visiting Period	A visiting period for this specified experience item.	0	*	
ASBIE	Calculated Price	A calculated price for this specified experience item.	0	*	
ABIE	Specified Feature	A distinctive or characteristic part of something.			
BBIE	Keyword Marketing Phrase Text	A keyword marketing phrase, expressed as text, for this feature.	0	*	Text
BBIE	Marketing Phrase Text	A marketing phrase, expressed as text, for this specified feature.	0	*	Text
BBIE	Type Code	The code specifying the type of feature.	0	1	Code
BBIE	Objective Text	An objective, expressed as text, for this specified feature.	0	*	Text
BBIE	Usage Code	The code specifying the usage for this specified feature.	0	1	Code
BBIE	Description	A textual description of this specified feature.	0	*	Text
ABIE	Specified Guest Arrival	The act of coming to or reaching a place by a specified guest.			
BBIE	Transport Mode Code	The code specifying the transport mode of this specified guest arrival.	0	1	Code
BBIE	Expected Date Time	The date, time, date time, or other date time value when this specified guest arrival is expected.	0	1	Date Time
BBIE	Carrier ID	The identifier of the carrier for this specified guest arrival.	0	1	Identifier
BBIE	Carrier Name	A carrier's name, expressed as text, related to this specified guest arrival.	0	*	Text
ABIE	Specified Information Source	A person, organization, thing or place from which information comes, arises or is obtained.			
BBIE	Name	A name, expressed as text, of this specified information source.	0	*	Text
BBIE	Category Code	The code specifying the category of this specified information source.	0	1	Code

BBIE	Content Text	Content, expressed as text, of this specified information source.	0	*	Text
BBIE	Security Information Text	Security information, expressed as text, of this specified information source.	0	*	Text
BBIE	Website URI	The identifier of the website URI (Uniform Resource Identifier) of this specified information source.	0	1	Identifier
BBIE	Description	A textual description of this specified information source.	0	*	Text
ABIE	Specified Location	A specified physical location or place.			
BBIE	Description	The textual description for this specified location.	0	*	Text
BBIE	Name	A name, expressed as text, for this specified location.	0	*	Text
BBIE	Directions Text	Directions, expressed as text, for this specified location.	0	*	Text
BBIE	Map URI	The identifier of a URI (Uniform Resource Identifier) for a map of this specified location.	0	1	Identifier
ASBIE	Specified Address	A address specified for this location.	0	*	
ABIE	Specified Membership	The state of belonging to a group, such as a club or trade association.			
BBIE	Name	A name, expressed as text, for this specified membership.	0	*	Text
BBIE	ID	The identifier of this specified membership.	0	1	Identifier
BBIE	Start Date Time	The date, time, date time, or other date time value of the start of this specified membership.	0	1	Date Time
BBIE	End Date Time	The date, time, date time, or other date time value of the end of this specified membership.	0	1	Date Time
BBIE	Description	A textual description of this specified membership.	0	*	Text
ABIE	Specified Note	A specified textual or coded description, such as a remark or additional information.			
BBIE	Subject Text	A subject, expressed as text, of this specified note.	0	*	Text
BBIE	Subject Code	The code specifying the subject of this specified note.	0	1	Code
BBIE	Creation Date Time	The date, time, date time, or other date time value for the creation of this specified note.	0	1	Date Time
BBIE	ID	The identifier of this specified note.	0	1	Identifier
BBIE	Description	A textual description of this specified note.	0	*	Text
BBIE	Name	A name, expressed as text, of this specified note.	0	*	Text
BBIE	Content Text	Content, expressed as text, of this specified note.	0	*	Text
ABIE	Specified Period	A specified period of time.			
BBIE	Description	A textual description of this specified period of time.	0	*	Text
BBIE	Start Date Time	The date, time, date time or other date time value for the start of this specified period of time.	0	1	Date Time
BBIE	End Date Time	The date, time, date time or other date time value for the end of this specified period of time.	0	1	Date Time

BBIE	ID	The unique identifier of this specified period.	0	1	Identifier
BBIE	Name	A name, expressed as text, of this specified period.	0	*	Text
BBIE	Purpose Code	The code specifying the purpose of this specified period.	0	1	Code
BBIE	Number Of Nights	The number of nights in this specified period.	0	1	Quantity
BBIE	Type Code	The code specifying the type of specified period.	0	1	Code
BBIE	Start Day Of Week Code	The code specifying the start day of the week for this specified period.	0	1	Code
BBIE	End Day Of Week Code	The code specifying the end day of the week for this specified period.	0	1	Code
BBIE	Number Of Days	The number of days in this specified period.	0	1	Quantity
BBIE	Duration Text	A duration, expressed as text, for this specified period.	0	*	Text
BBIE	Minimum Duration Measure	The measure of the minimum length of time for this specified period, such as hours, days, weeks, months, years.	0	1	Measure
BBIE	Maximum Duration Measure	The measure of the maximum length of time for this specified period, such as hours, days, weeks, months, years.	0	1	Measure
ABIE	Specified Requirement	Common conditions contained in a contract or agreement applicable between trading partners.			
BBIE	Type Code	The code specifying the type of specified requirement.	0	1	Code
BBIE	Rule Text	A rule, expressed as text, for this specified requirement.	0	*	Text
BBIE	Description	A textual description of this specified requirement.	0	*	Text
ASBIE	Payment Trade Settlement	The payment trade settlement for this specified requirement.	0	1	
ASBIE	Specifying Party	The party specifying this specified requirement.	0	1	
ABIE	Specified Route	A specified way or course taken from one location to another.			
BBIE	Map URI	The Uniform Resource Identifier (URI) of the map of this specified route.	0	1	Identifier
BBIE	Departure Point Text	A departure point, expressed as text, for this specified route.	0	*	Text
BBIE	Transport Means Text	A transport means, expressed as text, for this specified route.	0	*	Text
BBIE	Distance Measure	The measure of the distance of this specified route.	0	1	Measure
BBIE	Security Level Code	The code specifying the security level of this specified route.	0	1	Code
BBIE	Type Text	A type, expressed as text, for this specified route.	0	*	Text
BBIE	Status Code	The code specifying the status of this specified route.	0	1	Code
BBIE	Description	A textual description of this specified route.	0	*	Text
ABIE	Specified Usage Condition	The particular state of something, affected by use, that should be respected.			
BBIE	Age Limitation Text	An age limitation, expressed as text, for this specified usage condition.	0	*	Text

BBIE	Gender Limitation Text	A gender limitation, expressed as text, for this specified usage condition.	0	*	Text
BBIE	Appropriate Clothing Text	Appropriate clothing, expressed as text, for this specified usage condition.	0	*	Text
BBIE	Occupancy Text	Occupancy, expressed as text, for this specified usage condition.	0	*	Text
BBIE	Duration Text	A duration, expressed as text, for this specified usage condition.	0	*	Text
BBIE	Description	A textual description of this specified usage condition.	0	*	Text
ASBIE	Requiring Party	A party requiring this specified usage condition.	0	*	
ABIE	Sustainability Claim	A statement that user needs of the present are met without compromising the needs of future generations.			
BBIE	Description	A textual description of this sustainability assertion.	0	*	Text
ABIE	Trade Address	The location at which a particular trade related organization or person may be found or reached.			
BBIE	Postcode	A code specifying the postcode of this trade address.	0	*	Code
BBIE	Country Code	The unique identifier of a country for this trade address.	0	1	Identifier
BBIE	Country Name	A name, expressed as text, of the country for this trade address.	0	*	Text
BBIE	Free Form Text	A free form representation, expressed as text, of this trade address.	0	*	Text
BBIE	Invalid Indicator	The indication of whether or not this trade address is invalid.	0	1	Indicator
BBIE	Description	A textual description of this trade address.	0	*	Text
ABIE	Trade Allowance/Charge	A component of pricing, such as an allowance or charge for trade purposes.			
BBIE	Charge Indicator	The indication of whether or not the trade allowance charge is a charge.	0	1	Indicator
BBIE	ID	The unique identifier for this trade allowance charge.	0	1	Identifier
BBIE	Calculation Percent	The percentage applied to calculate this trade allowance charge.	0	1	Percent
BBIE	Basis Amount	The monetary value that is the basis on which this trade allowance charge is calculated.	0	*	Amount
BBIE	Prepaid Indicator	The indication of whether or not this trade allowance charge is prepaid.	0	1	Indicator
BBIE	Actual Amount	An actual monetary value of the trade allowance charge.	0	*	Amount
BBIE	Description	The textual description of this trade allowance charge.	0	*	Text
BBIE	Reason Code	The code specifying the reason for this trade allowance charge.	0	1	Code
ASBIE	Tax Category	A tax category of this trade allowance charge.	0	*	
ABIE	Trade Contact	A person or a department that acts as a point of contact with another person or department in a trading relationship.			
BBIE	Person Name	The name, expressed as text, of this trade contact person.	0	*	Text

BBIE	Department Name	The name, expressed as text, of the department to which this trade contact belongs within an organization.	0	*	Text
BBIE	Job Title	The job title, position or designation, expressed as text, of this trade contact within an organization, such as Director, Software Engineer, Purchasing Manager.	0	*	Text
BBIE	Responsibility Text	A responsibility, expressed as text, of this trade contact.	0	*	Text
BBIE	Description	A textual description of this trade contact.	0	*	Text
ASBIE	Used Communication	A communication used by this trade contact.	0	*	
ASBIE	Accessible Location	An accessible location specified for this trade contact.	0	*	
ABIE	Trade Contract	An agreement between two or more parties for trade purposes.			
BBIE	ID	The unique identifier of this trade contract.	1	1	Identifier
BBIE	Name	A name, expressed as text, for this trade contract.	0	*	Text
BBIE	Signature Name	A signature name, expressed as text, for this trade contract.	0	*	Text
BBIE	Signee Job Title	A job title of the signee, expressed as text, for this trade contract.	0	*	Text
BBIE	Signed Date Time	The date, time, date time or other date time value when this trade contract was signed.	0	1	Date Time
BBIE	Automatic Extension Date Time	The date, time, date time, or other date time value of automatic extension for this trade contract.	0	1	Date Time
BBIE	Automatic Extension Duration Measure	The measure of the duration of the automatic extension for this trade contract.	0	1	Measure
BBIE	Description	A textual description of this trade contract.	0	*	Text
ASBIE	Signed Location	A location where this trade contract was or will be signed.	0	*	
ABIE	Trade Party	An individual, a group, or a body having a role in a trade business function.			
BBIE	ID	A unique identifier of this trade party.	0	*	Identifier
BBIE	Type Code	A code specifying the type of trade party that is independent of its role.	0	*	Code
BBIE	Name	The name, expressed as text, for this trade party.	0	*	Text
BBIE	Role Code	A code specifying the role of this trade party.	0	*	Code
BBIE	Description	A textual description of this trade party.	0	*	Text
BBIE	Brand Name	The brand name, expressed as text, for this trade party.	0	*	Text
BBIE	Business Type Code	The code specifying the business type of this trade party.	0	1	Code
BBIE	Chain Name	A chain name, expressed as text, for this trade party.	0	*	Text
BBIE	Alliance Name	An alliance name, expressed as text, for this trade party.	0	*	Text
BBIE	Sales Manager Name	A name of a sales manager, expressed as text, for this trade party.	0	*	Text
ASBIE	Defined Contact Details	A trade contact defined for this trade party.	0	*	
ASBIE	Postal Address	The postal address for this trade party.	0	1	

ASBIE	Specified Contact Person	A contact person specified for this trade party.	0	*	
ASBIE	Claimed Personal Language Proficiency	Personal language proficiency skills claimed by this trade party.	0	*	
ASBIE	Agreed Contract	A trade contract agreed with this trade party.	0	*	
ASBIE	Commented Review Note	A commented review note specified for this trade party.	0	*	
ASBIE	Cooperative Information Source	A cooperative information source specified for this trade party.	0	*	
ASBIE	Associated Membership	A membership associated with this trade party.	0	*	
ASBIE	Requested Experience Item	An experience item requested for or by this trade party.	0	*	
ASBIE	Available Experience Item	An experience item available for this trade party.	0	*	
ASBIE	Reserved Experience Item	An experience item reserved for or by this trade party.	0	*	
ASBIE	Experience Item Searched Wish List	An experience item wish list searched for or by this trade party.	0	*	
ASBIE	Guest Person	A guest person specified by this trade party.	0	*	
ASBIE	Available Experience Facility	An experience facility made available for or by this trade party.	0	*	
ASBIE	Sustainability Assertion	The sustainability assertion specified for this trade party.	0	1	
ASBIE	Cooperating Organization	A cooperating organization specified for this trade party.	0	*	
ABIE	Trade Price	A sum of money for which something is or may be bought or sold for trade purposes.			
BBIE	Net Price Indicator	The indication of whether or not the trade price is the net price.	0	1	Indicator
BBIE	Type Code	The code specifying the type of trade price.	0	1	Code
BBIE	Charge Amount	A monetary value of the trade price charge.	0	*	Amount
BBIE	Type Text	A type, expressed as text, for this trade price.	0	*	Text
BBIE	Description	A textual description of this trade price.	0	*	Text
BBIE	Category Type Code	The code specifying the type of category, such as refund or service charge, for this trade price.	0	1	Code
BBIE	Bracket Type Code	The code specifying the type of bracket for this trade price.	0	1	Code
BBIE	Determination Code	The code specifying the determination of this trade price.	0	1	Code
BBIE	Expiry Date Time	The expiry date, time, date time, or other date time value for this trade price.	0	1	Date Time
BBIE	Number Of Days	The number of days related to this trade price.	0	1	Quantity
BBIE	Information Text	Information, expressed as text, for this trade price.	0	*	Text
BBIE	Cancellation Percentage	The cancellation percentage for this trade price.	0	1	Percent
BBIE	Calculation Percentage	The calculation percentage for this trade price.	0	1	Percent

BBIE	Customer Service Point Quantity	The number of customer service points for this trade price.	0	1	Quantity
BBIE	Reason Code	A code specifying a reason for this trade price.	0	*	Code
BBIE	Multiple Reason Indicator	The indication of whether or not multiple reasons affect this trade price.	0	1	Indicator
BBIE	Total Charge Amount	A monetary value of the total charge of this trade price.	0	*	Amount
BBIE	Grand Total Charge Amount	A monetary value of the grand total charge of this trade price.	0	*	Amount
BBIE	Seasonal Rank Code	The code specifying the seasonal rank of this trade price.	0	1	Code
ASBIE	Applied Allowance/Charge	An allowance or charge applied to the trade price.	0	*	
ASBIE	Included Tax	A tax included in this trade price.	0	*	
ASBIE	Payment Trade Settlement	A payment trade settlement specified for this trade price.	0	*	
ASBIE	Applicable Customer Class	An applicable customer class for this trade price.	0	*	
ASBIE	Applicable Seasonal Period	A seasonal period applicable for this trade price.	0	*	
ASBIE	Applicable Operational Period	An operational period applicable for this trade price.	0	*	
ASBIE	Applicable Note	A specified note applicable to this trade price.	0	*	
ABIE	Trade Settlement Financial Card	A card used to represent a financial account for a trade settlement.			
BBIE	ID	The unique identifier, commonly known as the card number, of this trade settlement financial card.	0	1	Identifier
BBIE	Type Code	The code specifying the type of this trade settlement financial card, such as debit or credit.	0	1	Code
BBIE	Cardholder Name	The cardholder name as it appears on this trade settlement financial card. This may include both an individual authorized to use the card as well as the organization that owns the card.	0	1	Text
BBIE	Expiry Date	The date of expiry up to which this trade settlement financial card is valid.	0	1	Date
BBIE	Verification Number	The unique card verification number for security purposes to help verify the card user is in actual possession of this trade settlement financial card.	0	1	Numeric
BBIE	Valid From Date	The date from which this trade settlement financial card is valid.	0	1	Date Time
BBIE	Issuing Company Name	The issuing company name, expressed as text, for this trade settlement financial card.	0	*	Text
BBIE	Description	The textual description of this trade settlement financial card.	0	*	Text
BBIE	Expiry Date	The date of expiry up to which this trade settlement financial card is valid.	0	1	Date Time
BBIE	Applicable Indicator	The indication of whether or not this trade settlement financial card is applicable.	0	1	Indicator
ABIE	Trade Settlement Payment Means	The means by which a payment will be or has been made for trade settlement purposes.			

BBIE	Type Code	The code specifying the type of trade settlement payment means, such as cash or check.	0	1	Code
BBIE	Information	Information, expressed as text, for this trade settlement payment means.	0	*	Text
ASBIE	Identified Financial Card	A financial card identified for this trade settlement payment means.	0	*	
ASBIE	Payment Financial Institution	A financial institution specified for this trade settlement payment means.	0	*	
ASBIE	Debtor Payment Financial Institution	A debtor financial institution specified for this trade settlement payment means.	0	*	
ASBIE	Creditor Payment Financial Institution	A creditor financial institution specified for this trade settlement payment means.	0	*	
ASBIE	Identified Digital Payment Method	A digital payment method identified for this trade settlement payment means.	0	*	
ASBIE	Identified Cash Payment	A cash payment identified for this trade settlement payment means.	0	*	
ASBIE	Identified Cheque Payment	A cheque payment identified for this trade settlement payment means.	0	*	
ASBIE	Identified Experience Item Voucher	An experience item voucher identified for this trade settlement payment means.	0	*	
ABIE	Trade Tax	A trade related fiscal levy or duty.			
BBIE	Calculated Amount	A monetary value resulting from the calculation of this trade related tax, levy or duty.	0	*	Amount
BBIE	Type Code	The code specifying the type of trade related tax, levy or duty, such as a code for a Value Added Tax (VAT) [Reference United Nations Code List (UNCL) 5153].	0	1	Code
BBIE	Basis Amount	A monetary value used as the basis on which this trade related tax, levy or duty is calculated.	0	*	Amount
BBIE	Allowance/Charge Basis Amount	A monetary value used as the allowance and charge basis on which this trade related tax, levy or duty is calculated.	0	*	Amount
BBIE	Category Code	The code specifying the category to which this trade related tax, levy or duty applies, such as codes for "Exempt from Tax", "Standard Rate", "Free Export Item - Tax Not Charged" [Reference United Nations Code List (UNCL) 5305].	0	1	Code
BBIE	Description	A textual description of this trade related tax, levy or duty.	0	*	Text
BBIE	Local Tax System ID	The identifier of the local tax system for this trade tax.	0	1	Identifier
BBIE	ID	The identifier of this trade tax.	0	1	Identifier
ABIE	Communication	The exchange of thoughts, messages, or information, as universally exchanged by speech, signals, writing, or behaviour between persons and/or organizations.			
BBIE	Channel Code	The code specifying the channel or manner in which a universal communication can be made, such as telephone or email.	0	1	Code

BBIE	Complete Number	The text string of characters that make up the complete number for this universal communication.	0	1	Text
BBIE	Website URI	The Uniform Resource Identifier (URI) of the website for this universal communication.	0	1	Identifier
BBIE	Email URI	The Uniform Resource Identifier (URI) of the email for this universal communication.	0	1	Identifier
BBIE	Invalid Indicator	The indication of whether or not this universal communication is invalid.	0	1	Indicator
BBIE	Description	A textual description of this universal communication.	0	*	Text
ABIE	Water Source	A place from which water originates, such as a hot spring or lake that provides water to public drinking water supplies and private wells.			
BBIE	Name	A name, expressed as text, for this water source.	0	*	Text
BBIE	ID	The identifier of this water source.	0	1	Identifier
BBIE	Category Code	The code specifying the category for this water source.	0	1	Code
BBIE	Characteristic Code	The code specifying the characteristic of this water source.	0	1	Code
BBIE	Marketing Phrase Text	A marketing phrase, expressed as text, for this water source.	0	*	Text
BBIE	Health Benefit Text	A health benefit, expressed as text, for this water source.	0	*	Text
BBIE	Bathing Prohibition Caution Text	A caution, expressed as text, of a bathing prohibition for this water source.	0	*	Text
BBIE	Drinking Prohibition Caution Text	A caution, expressed as text, of a drinking prohibition for this water source.	0	*	Text
BBIE	Description	A textual description of this water source.	0	*	Text

2.7 Code Lists developed

The relevant code lists for EPs trade have been developed as in the following. (These lists will be maintained well to meet the business need.)

Table 2-6 Code lists and values

Code list and code values	Code list and code values
Cooperating_ Organization. Role. Code	Specified_ Experience Item. Response_ Status. Code
1 - Fund provider	1 - Reserved
2 - Marketing provider	2 - Not reserved
3 - HR provider	3 - Not accepted
4 - Official support	4 - Cancelled
5 - Multiple support provider	5 - Refunded
Disease_ Protection Means. Category. Code	6 - Waiting
1 - Drinking medicine	7 - On request
2 - Vaccinating	Specified_ Experience Item. Status. Code
3 - Wearing	1 - Wide open
4 - Applying ointment	2 - Small number available
5 - Spraying	3 - Not available
Experience Program_ Action. Status. Code	4 - Closed
1 - Sending	Specified_ Experience Item. Theme Type. Code (and Product)

Code list and code values	Code list and code values
2 - Sent out	1 - Wellness
3 - Re-sending	2 - Adventure
4 - Responding	3 - Sightseeing
5 - Responded	4 - Nature watching
6 - Respond shortly	5 - Religious experience
7 - Will respond	6 - Historical experience
8 - Respond in a few days	7 - Heritage experience
9 - Respond in a week	8 - Farming experience
10 - Re-responding	9 - Social service experience
11 - Unable to respond	10 - Manufacturing experience
12 - Error transmitted	11 - Fishing experience
13 - Communication in trouble	12 - Business experience
14 - Testing	13 - City life experience
15 - Deleted	14 - Country life experience
Experience Program_ Action. Type. Code	15 - Meditating
1 - Search	16 - Learning
2 - Reserve	17 - Convention (MICE)
3 - Change	Specified_ Feature. Usage. Code
4 - Cancel	1 - Regional vitalization conscious
5 - Pay	2 - Environment sustainability conscious
6 - Refund	3 - Quality of life improvement conscious
7 - Delete	4 - Wellness conscious
8 - Respond	5 - UN/SDGs, in general, conscious
9 - Test	6 - The others
10 - Act for nothing	Specified_ Guest Arrival. Transport Mode. Code
11 - Act invalidly	1 - Airline
	2 - Railway
Experience_ Facility. Type. Code	3 - Tram
1 - Lodging house	4 - Bus
2 - Guest room	5 - Community bus
3 - Restaurant	6 - Taxi
4 - Meeting room	7 - Private car
5 - Recreation facility	Specified_ Information Source. Category. Code
6 - Business support room	1 - Description
7 - Sightseeing facility	2 - Image
8 - Parking facility	3 - Web site
9 - Bathing facility	4 - Short video
10 - Wellness center	5 - SNS
11 - Meditation center	6 - Short message
Experience_ Product. Applicable Quantity Unit_ Type. Code	7 - Others
1 - Adult	Specified_ Note. Subject. Code
2 - Male adult	1 - Special arrangement
3 - Female adult	2 - General matter
4 - Student	3 - In secrecy
5 - Child	4 - Product related
6 - Infant	5 - Activity/Event related
7 - Room	6 - Optional Product related
8 - Seat	7 - Multiple subject related
9 - A car capacity	Specified_ Period. Start_ Day Of Week. Code
10 - A bus capacity	0 - Sunday
11 - A train capacity	1 - Monday
12 - A table capacity	2 - Tuesday

Code list and code values	Code list and code values
Guest_ Allergy State. Type. Code	3 - Wednesday
1 - Dust	4 - Thursday
2 - Pollen	5 - Friday
3 - Food	6 - Saturday
4 - Medicine	Specified_ Period. End_ Day Of Week. Code
5 - Animal	0 - Sunday
6 - Tree	1 - Monday
7 - Plant	2 - Tuesday
8 - Atmosphere	3 - Wednesday
Guest_ Carried Equipment. Type. Code	4 - Thursday
1 - Scuba diving	5 - Friday
2 - Skiing	6 - Saturday
3 - Mountain climbing	Specified_ Period. Minimum_ Duration. Measure
4 - Rock climbing	1 - Operating for a day
5 - Skating	2 - Operating for a week
6 - Cycling	3 - Operating for a month
7 - Wild life watching	4 - Operating for 3 months
Guest_ Disability State. Type. Code	5 - Operating for 6 months
1 - Walking disability	7 - Operating for a year
2 - Viewing disability	Specified_ Period. Maximum_ Duration. Measure
3 - Hearing disability	1 - Operating for a day
4 - Speaking disability	2 - Operating for a week
5 - Multiple disability	3 - Operating for a month
6 - Other disability	4 - Operating for 3 months
Guest_ Food Choice. Type. Code	5 - Operating for 6 months
1 - Vegetarian food	7 - Operating for a year
2 - Vegan food	Trade_ Contract. Automatic Extension_ Period. Code
3 - Meat based food	1 - 1 year
4 - Fish based food	2 - 0.5 year
5 - Halal food	3 - 1 month
6 - Fasting based food	Specified_ Period. Purpose. Code
7 - No special choice	1 - Sales period
Guest_ Health Indication. Type. Code	2 - Trial period
1 - Normal	3 - No sales period
2 - Excellent	4 - Operation period
3 - Good	5 - No operation period
4 - Poor	Specified_ Requirement. Type. Code
5 - Other	1 - Buyer response requested
Personal_ Language Proficiency. Language. Code	2 - Vaccination proof
- See UNECE ISO 639-1 2A language codes	3 - Guest carrying items
Personal_ Language Proficiency. Speaking Level. Code	Specified_ Route. Security Level. Code
1 - Native language only	1 - Ordinary
2 - English somewhat available	2 - GPS or map needed
3 - English available	3 - Caution needed
4 - Local language available	4 - Experience needed or guide assistance preferable
Guest_ Person. Gender. Code	5 - Dangerous
1 - Male	Specified_ Route. Status. Code
2 - Female	1 - Existing
3 - X-gender	2 - Planned
4 - Not shown	3 - Under construction
Guest_ Person. Role. Code	4 - Closed
1 - Leader	Trade Settlement_ Payment Means. Type. Code

Code list and code values	Code list and code values
2 - Member	1 - Financial institution
Guest_ Person. Title. Code	2 - Financial card
1 - Mr.	3 - Digital method
2 - Mrs.	4 - Voucher
3 - Ms	5 - Cheque
4 - Dr.	6 - Cash
5 - Master	
6 - Not specified	
Payment_ Financial Account. Currency. Code	
- See UNECE/ISO 4217 Currency code list	
Payment_ Trade Settlement. Payment_ Currency. Code	
- See UNECE/ISO 4217 Currency code list	
Payment_ Trade Settlement. Priority. Code	
1 - Top priority	Trade_ Party. Role. Code
2 - Second priority	1 - Travel Company (Agent)
3 - Last priority	2 - Supplier
Payment_ Trade Settlement. Type. Code	3 - EPs information supplier
1 - Normal payment	4 - EPs product and information supplier
2 - Delayed payment	5 - EPs operator
3 - Penalty payment	6 - EPs wholesaler
4 - Deficit payment	Trade_ Party. Type. Code
5 - Refunded	1 - Buyer
Payment_ Trade Settlement. Status. Code	2 - Seller
1 - Fully paid	3 - Intermediary
2 - Not yet paid	4 - Payer
3 - Partly paid	Trade_ Price. Bracket_ Type. Code
4 - No payment needed	1 - Single room or equivalent space plus breakfast and dinner
Pet_ Animal. Category. Code	2 - Twin room or equivalent space plus breakfast and dinner
1 - Dog	3 - Family room plus breakfast and dinner
2 - Cat	Trade_ Price. Determination. Code
3 - Bird	1 - No Show
4 - Rabbit	2 - Cancelled on check-in date
5 - Mouse	3 - Cancelled up to 1 day prior to check-in date
Special_ Query. Response_ Status. Code	4 - Cancelled up to 2 days prior to check-in date
5 - Responded	5 - Cancelled up to 3 days prior to check-in date
6 - Respond shortly	6 - Delayed without notice
7 - Will respond	7 - Cancellation by supplier
8 - Respond in a few days	8 - Natural disaster
9 - Respond in a week	9 - Pandemic
11 - Unable to respond	10 - Accident
14 - Testing	Trade_ Price. Reason. Code
Specified_ Certificate. Category. Code	1 - Early bird
1 - Scuba diving	2 - Silver age
2 - Skiing	3 - Gender
3 - Mountain climbing	4 - Continuous multiple stays
4 - Rock climbing	5 - Member
5 - Car driving	6 - Birthday
6 - Cooking	7 - Child
7 - English Language	8 - More than limited number
8 - Caring	9 - Certificate holder
9 - Travel operation	10 - Equipment holder

Code list and code values	Code list and code values
10 - Travel managing	11 - Insurance holder
Specified_ Certificate. Purpose. Code	12 - Frequent guest
1 - To show that the corporate or a person satisfies the legal requirements	13 - Cancellation by supplier
2 - To show that the corporate or a person is eligible for the service	14 - Natural disaster
3 - To do business based on government safety guidelines	15 - Pandemic
Specified_ Certificate. Type. Code	16 - Labour strike
1 - Licence	17 - Accident
2 - Certificate	13 - Memorial day
3 - Permit	Trade_ Price. Type. Code
Specified_ Customer Class. Category. Code	1 - Dynamic price
1 - Independent person	2 - Basic price
2 - Couple members	3 - Extra price
3 - Family members	4 - Discount price
4 - Group members	5 - Service price
Specified_ Customer Class. Gender. Code	6 - Daily price
1 - Male	7 - Cancellation price
2 - Female	8 - Refund price
3 - X-gender	9 - Commission price
4 - Not shown	10 - Penalty price
Specified_ Customer Class. Meal Service _ Category. Code	Trade_ Tax. Category. Code
1 - Meal not inclusive	1 - Tax total
2 - All meals inclusive	2 - Sales tax
3 - Breakfast inclusive	3 - Hotel tax
4 - Breakfast and dinner inclusive	4 - Hot spring bathing tax
5 - Other	5 - Airport usage tax
Specified_ Experience Item. Category. Code	Trade_ Tax. Type. Code
1 - EPs Product	1 - Government tax
2 - Activity/Event	2 - Local government tax
3 - Optional EPs Product	3 - Sub-local government tax
4 - Guide	Universal_ Communication. Channel. Code
5 - Coordinator	1 - Telephone
6 - Instructor	2 - Faximile
Specified_ Experience Item. Applicable Quantity Unit _ Type. Code	3 - e-mail
1 - Adult	4 - Letter
2 - Male adult	5 - Short message
3 - Female adult	
4 - Student	
5 - Child	Water_ Source. Category. Code
6 - Infant	1 - Hot spring source
7 - Room	2 - Water source
8 - Seat	Water_ Source. Characteristic. Code
9 - A car capacity	1 - Soft water
10 - A bus capacity	2 - Hard water
11 - A table capacity	3 - Natural flow
Specified_ Feature. Type. Code	4 - Pumping out
1 - Requirement and usage condition specified	
2 - Operational period specified	Payment_ Cash. Type. Code
3 - Certificate specified	1 - Cash on site
4 - Applicable note specified	2 - Cash on delivery

Code list and code values	Code list and code values
5 - Health and physical condition specified	
6 - Guest preference specified	Payment_Cheque. Type. Code
7 - Guest carried equipment specified	1 - Bank cheque
8 - Expert assistance required	2 - Traveller's cheque
9 - Government permit required	
	Experience Item_Voucher. Type. Code
Payment_Digital Method. Type. Code	1 – Lodging voucher
1 - Digital payment (in general)	2 – Meal voucher
2 - Digital (or Electronic) cash	3 – Operator voucher
3 - Digital (or Electronic) card	
4 - Digital (or Electronic) cheque	Trade Settlement_Financial Card. Type. Code
5 - Digital (or Electronic) voucher	1 - Credit card
6 - Virtual payment (in general)	2 - Debit card
	3 - Prepaid card
Trade_Price.Ranking. Code	Payment_Financial Account. Type. Code
1 - Basic price	1 - Saving account
2 - Shoulder price	2 - Checking account
3 - Peak price	
4 - Flat price	Payment_Financial Institution. Type. Code
	1 - Payee's financial institution
	2 - Payer's financial institution

END