



**JOINT
ENVIRONMENT
UNIT**

TOGETHER
FOR A BETTER
RESPONSE

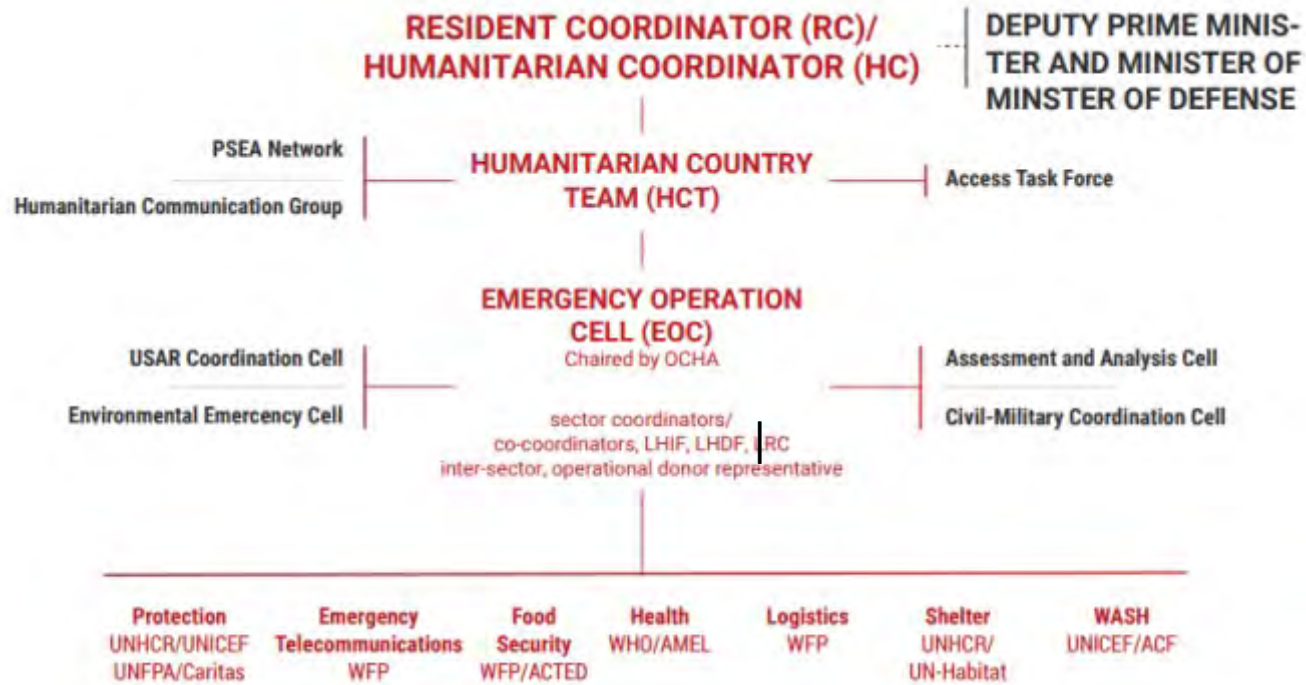
UNEP/OCHA Joint Environment Unit's response and support following the Beirut port explosion

Margherita Fanchiotti, PhD
Programme Management Officer
UNEP/OCHA Joint Environment Unit

Response



International assistance





- 1: Extreme high Risk Zone, ultra heavily UXO contamination >20 per m2, prohibited to enter, enter only as expert;
- 2: High Risk Zone, heavily UXO contamination >10 per m2, prohibited to enter, enter only with EOD expert;
- 3: Medium Risk Zone, light UXO contamination <10per m2, enter with associated risks for further assessments possible;
- 4: Suspected Risk Zone, UXO contamination possible, enter with associated risks for further assessments possible;
- 5: On-going clearance site, UXO contamination localised on defined collecting spots, enter with associated risks for further assessments possible;
- 6: Non-suspected Risk Zone, no UXO contamination reported, enter without restrictions;
- 7: Cleared area, no visible UXO contamination, enter with associated risks for further assessments possible.

500 Meters
 Data Sources:
 UNOSAT, OpenStreetMap, Satellite imagery ©2021 Maxar Technologies
 With the support of the UK Ministry of Foreign Affairs and the Commonwealth of Nations (FCDO) and the Netherlands Ministry of Foreign Affairs.
 Produced by MapAction (19/03/2021)



Beirut Explosions (Aug 2020)



Hurricanes Eta & Iota (Nov-Dec 2020)



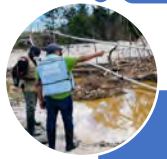
Bata Explosions (Mar-Apr 2021)



La Soufriere Volcano Eruptions (Apr-May 2021)



Sri Lanka MV X-Press Pearl wrecking (June 2021)



Guyana floods (June 2021)



Haiti earthquake (2021)



**JOINT
ENVIRONMENT
UNIT**

TOGETHER
FOR A BETTER
RESPONSE

Thank you

Margherita Fanchiotti, PhD
Programme Management Officer, UNEP/OCHA Joint Environment Unit
fanchiotti@un.org
