

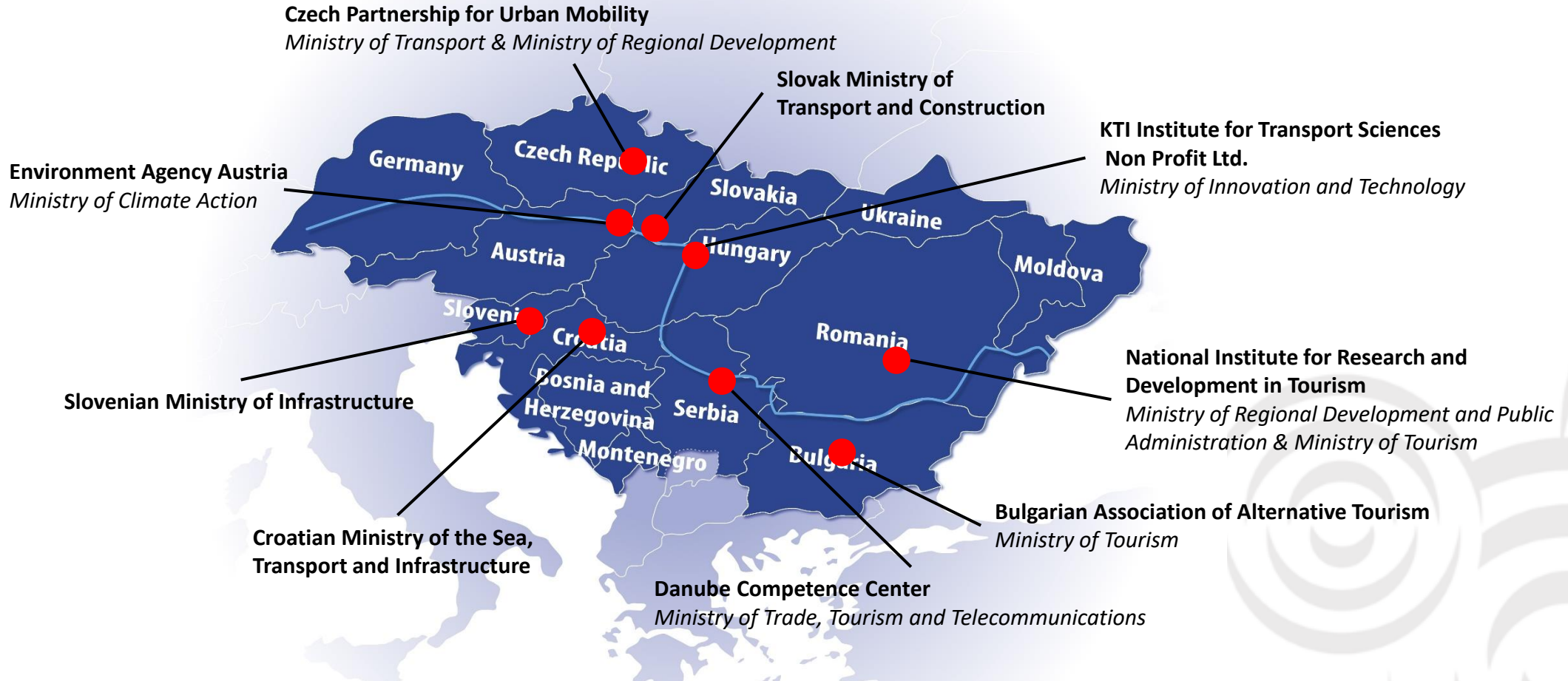
Regional support for the implementation of the pan-European Master Plan for Cycling Promotion



&



Project partnership



Facts and figures

- Budget: 1.7 Mio (85% co-financed by ERDF/IPA)
- Duration: 07/2020 – 12/2022
- Partnership: 9 partners from 9 countries, 13 ASPs
- Lead partner: Environment Agency Austria

umweltbundesamt^U
ENVIRONMENT AGENCY AUSTRIA

 Federal Ministry
Republic of Austria
Climate Action, Environment,
Energy, Mobility,
Innovation and Technology

klimaaktiv


National Cycling Plans
→ Danube Cycling Strategy


Federal Ministry
Republic of Austria
Climate Action, Environment,
Energy, Mobility,
Innovation and Technology

mobil

CHARGE
DES TRANSPORTS
Liberal
Egalité
Inclusion

Pan-European Master Plan for Cycling Promotion

5th High-level Meeting on Transport, Health and Environment, May 2021



THE PEP | Transport, Health and Environment Pan-European Programme

UNECE | World Health Organization

PEMP Recommendation: Develop (and/or update) and implement a national cycling plan




STORIES THAT HAVE AFFECTED THE CYCLING STRATEGY

RO, BG, RS, SL, HR

Interreg
Danube Transnational Programme
Danube Cycle Plans


Danube Cycle Plans

Guideline on how to set up a national cycling plan



<http://www.interreg-danube.eu/approved-projects/danube-cycle-plans>

PP Partnership for Urban Mobility
WP T 1.2.
Author: Martinek, Vrtalová
Version: Final
Date: 09. 04. 2021



A stream of cooperation
Project is co-funded by the European Union funds (ERDF, ERDF)

National Strategy of Development of Cycling Transport and Cycle Tourism in the Slovak Republic

Ministry of Transport, Construction and Regional Development of the Slovak Republic

2013

Programme 20



MAIB, The City of Vienna, Radverkehr in Wien 2014

Trans-European cycling network

PEMP Recommendation: Support the development of a **trans-European cycling network** based on official national cycle routes and EuroVelo networks



Danube Cycle Plans Guidelines to Define National Cycle Route Network



<http://www.interreg-danube.eu/approved-projects/danube-cycle-plans>

PP4 SL: Republic of Slovenia
Ministry of Infrastructure

WP T 1.3
Version 13.0
Date: 9. 4. 2021



A stream of cooperation

Project is co-funded by the European Union funds (ERDF IPA).

07/12/2021

Infrastructure Design Standards

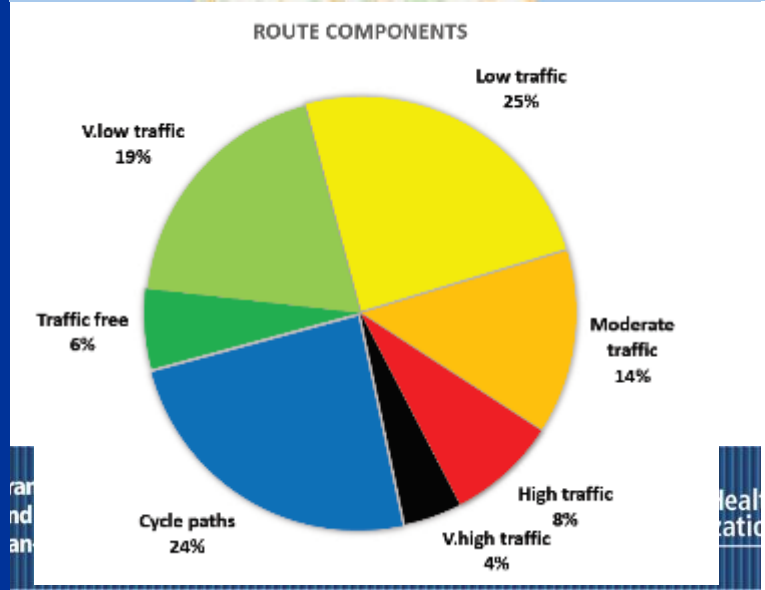
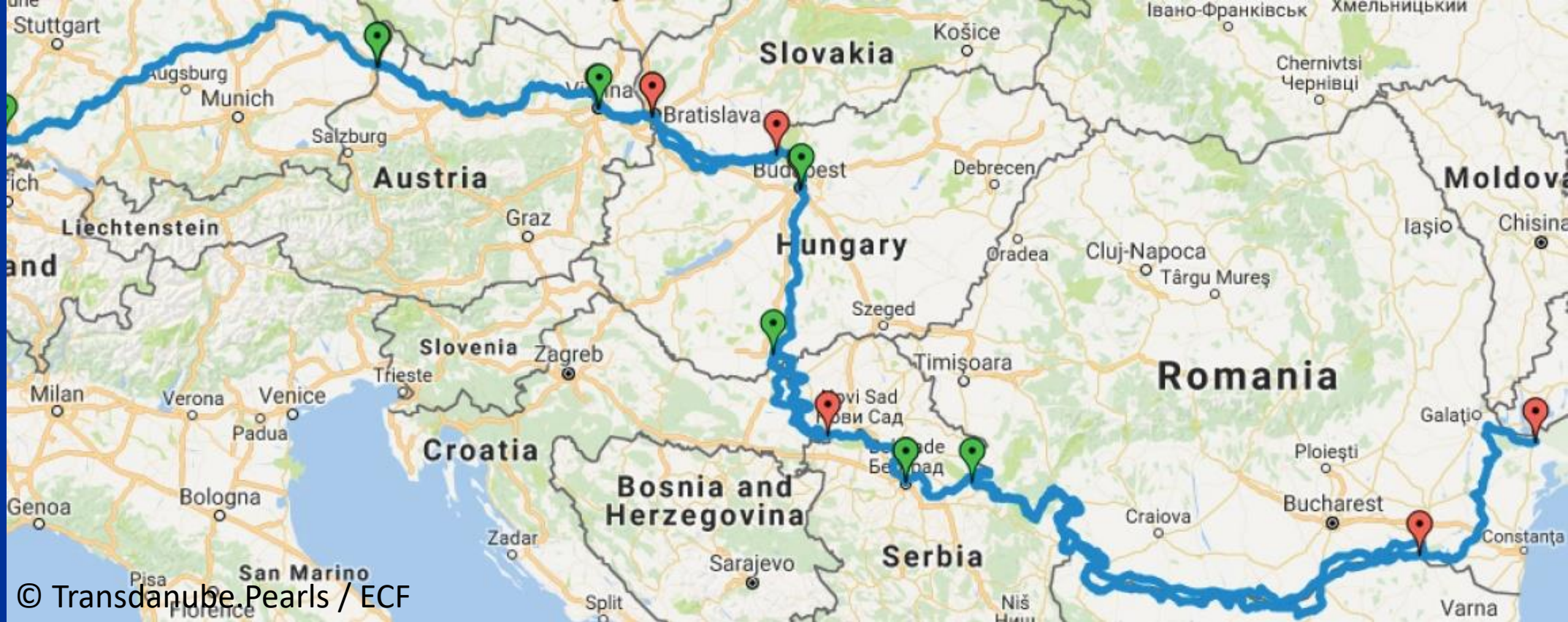
PEMP Recommendation: **Standardize cycling infrastructure:** Minimum infrastructure quality standards that ensure the coherence, directness, safety, comfort and attractiveness of cycling networks should be adopted



	AT	CZ	HU	SL	SK	RO	SR	HR	BG
Cycle tracks	✓	✓	✓	✓	✓	✓	✓	✓	✓
Cycle and pedestrian tracks	✓	✓	✓	✓	✓	✓	✓	✓	✓
Cycle lanes	✓	✓	✓	✓	✓	✓	✓	✓	✓
Advisory cycle lanes	✓	✓	✓	✓	✓	✓	✗	✗	✗
Contraflow	✓	✓	✓	✓	✓	✗	✗	✗	✗
Cycle routes	✓	✓	✓	✗	✗	✗	✓	✗	✗
Greenways / multipurpose path	✗	✗	✓	✓	✗	✗	✗	✓	✗
Mixed-use zones	✓	✓	✗	✓	✗	✗	✗	✗	✗
Cycle streets	✓	✓	✗	✗	✗	✗	✗	✗	✗
Cycle highways		✗		✗	✗	✗	✗	✗	✗

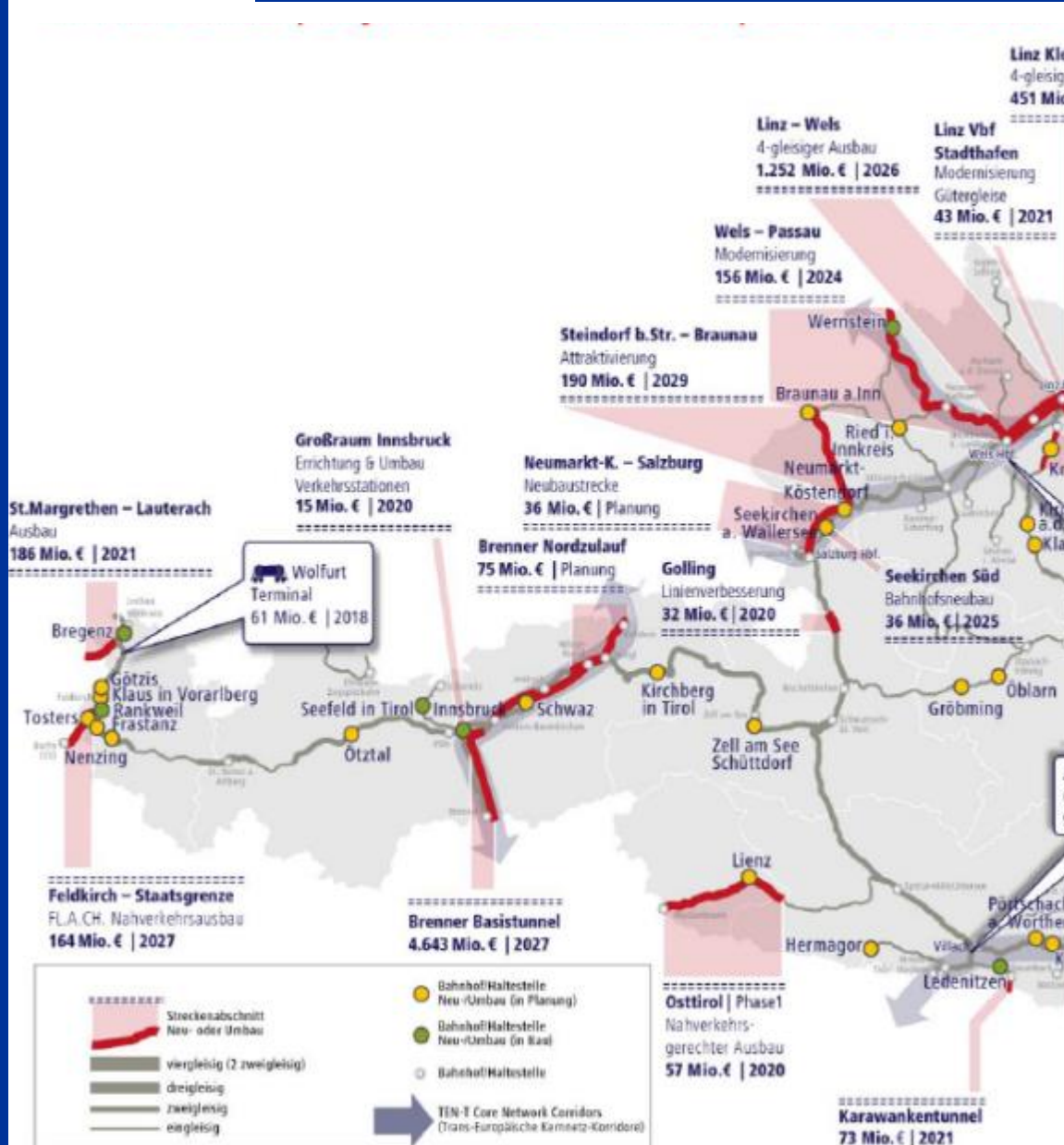


Network conditions EuroVelo 6 Route Assessment



	30 km/h or lower	31 to 50 km/h	51 to 79 km/h	80 km/h or over
Traffic-free / cycle paths	30.1%			
1-500 units/day	5.7%	6.1%	5.7%	1.3%
501-2 000 units/day	1.5%	7.1%	15.9%	1.7%
2 001-4 000 units/day	0.2%	4.1%	7.9%	1.0%
4 001-10 000 units/day	0.2%	3.3%	3.9%	1.5%
>10 000 units/day	0.0%	1.3%	1.2%	0.3%

■ = traffic-free / very low traffic
 ■ = low traffic
 ■ = moderate traffic
 ■ = high traffic
 ■ = very high



A Cycling Investment Plan for Europe

A response by the cycling sector to the EU's "Investment Plan for Europe".

Produced by:



and



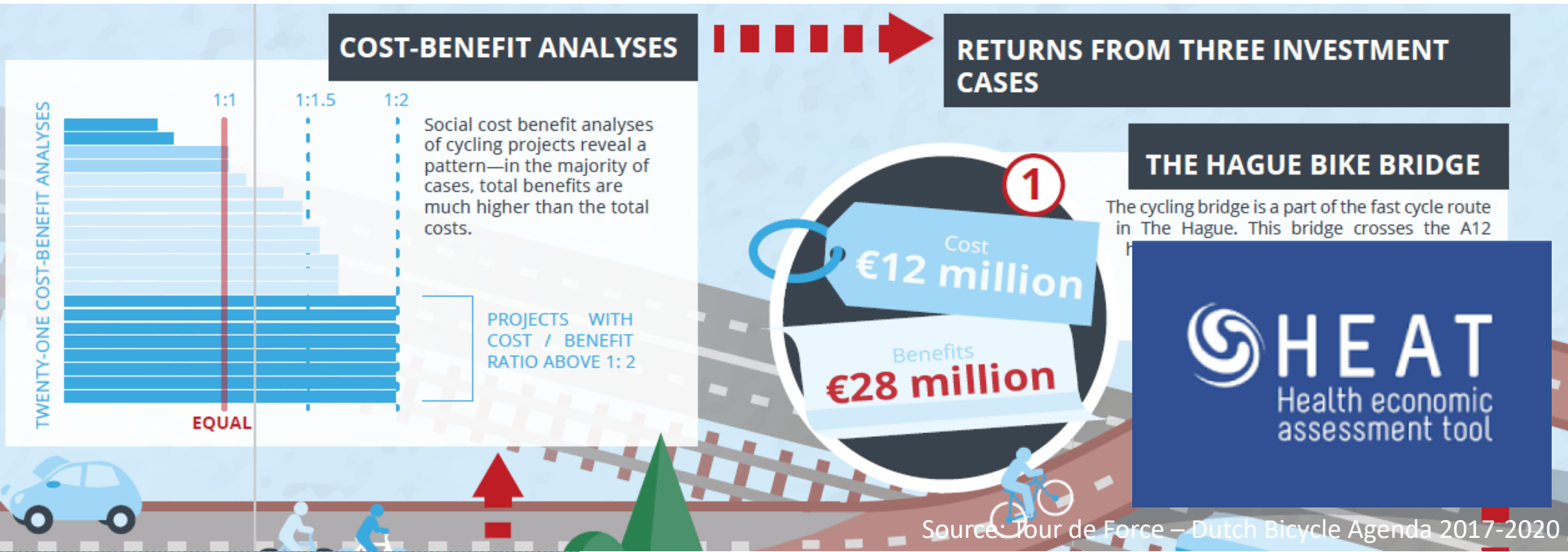
COLIBI-COLIPED Representing the European Bicycle Industry

(Comité de Liaison des Fabricants Européens de Bicyclettes / Comité de Liaison des Fabricants de Pièces et Equipements de Deux-roues des pays de la C.E)

4th December 2014

What is return on investment for cycling?

PEMP Recommendation: Consider the impact of cycling during investment decisions



Danube Cycling Ambassadors City Changers

PEMP Recommendation: Promote the use of cycling through mobility management

Source: <http://citychangers.eu/>

The CityChangers initiative was created by a group of people who don't care how and where they live. The CityChangers platform is not only made up of politicians, but above all active people in local communities, which we would like to connect with each other. It offers information on innovation, technology, street design, squares, safe transport, helps with conceptual planning and good examples from their cities...



Olomouc, mayor

Miroslav Zbánek

"Transport in the city should contribute to a higher quality of life."



Prague 5, mayor

Renata Zajíčková

"General Transport of Prague 5 will be built on sustainability."



Příbram, Deputy Mayor

Martin Buršík

"I understand Příbram as a city of short distances."



Cyclo-influencer

Jana Trávníčková

"I want to help people break down the fear of traffic"



Trinec, mayor

Věra Palkovská

"You can't change a city for the better without active communication."



Celebrated

Milos Musil

"We have created a strong tandem."



Jihlava, councilor for transport

Jaroslav Vymazal

"Our aim will be to strengthen sustainable transport modes."



Prague

Young family

"Carsharing is more advantageous than owning a car"