

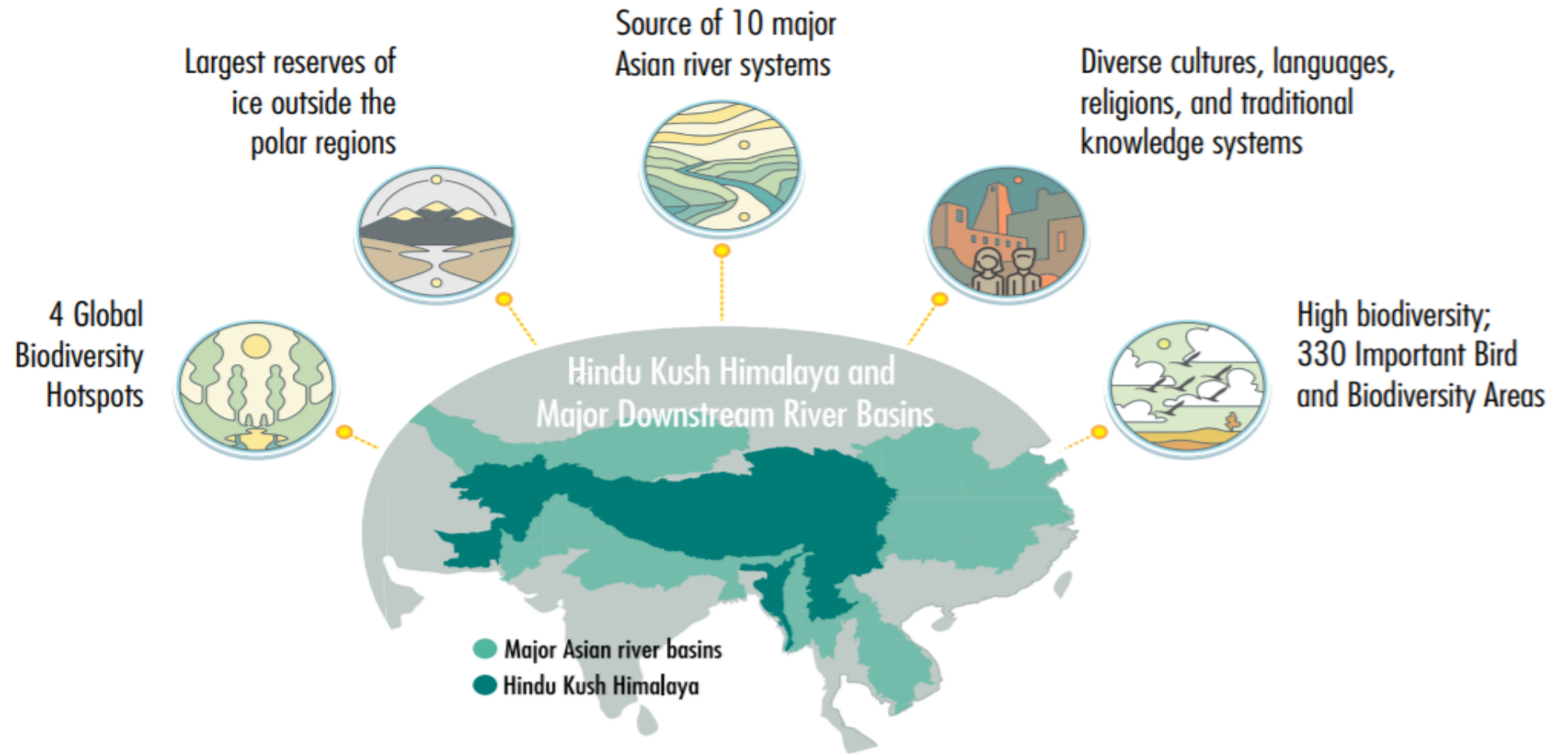
The Seventh meeting of the Task Force on
Water-Energy-Food-Ecosystem Nexus
(12-13 December)

WEFE Nexus – An approach to protect Mountain Ecosystems

Learnings from Hindu Kush Himalaya

Babar Khan & Sunita Chaudhary
ICIMOD, Kathmandu
13 December 2022

HKH - A global treasure trove



240 million

people depend directly on the HKH for their lives and livelihoods

1.9 billion

people depend on the HKH for water, food, and energy

> 35%

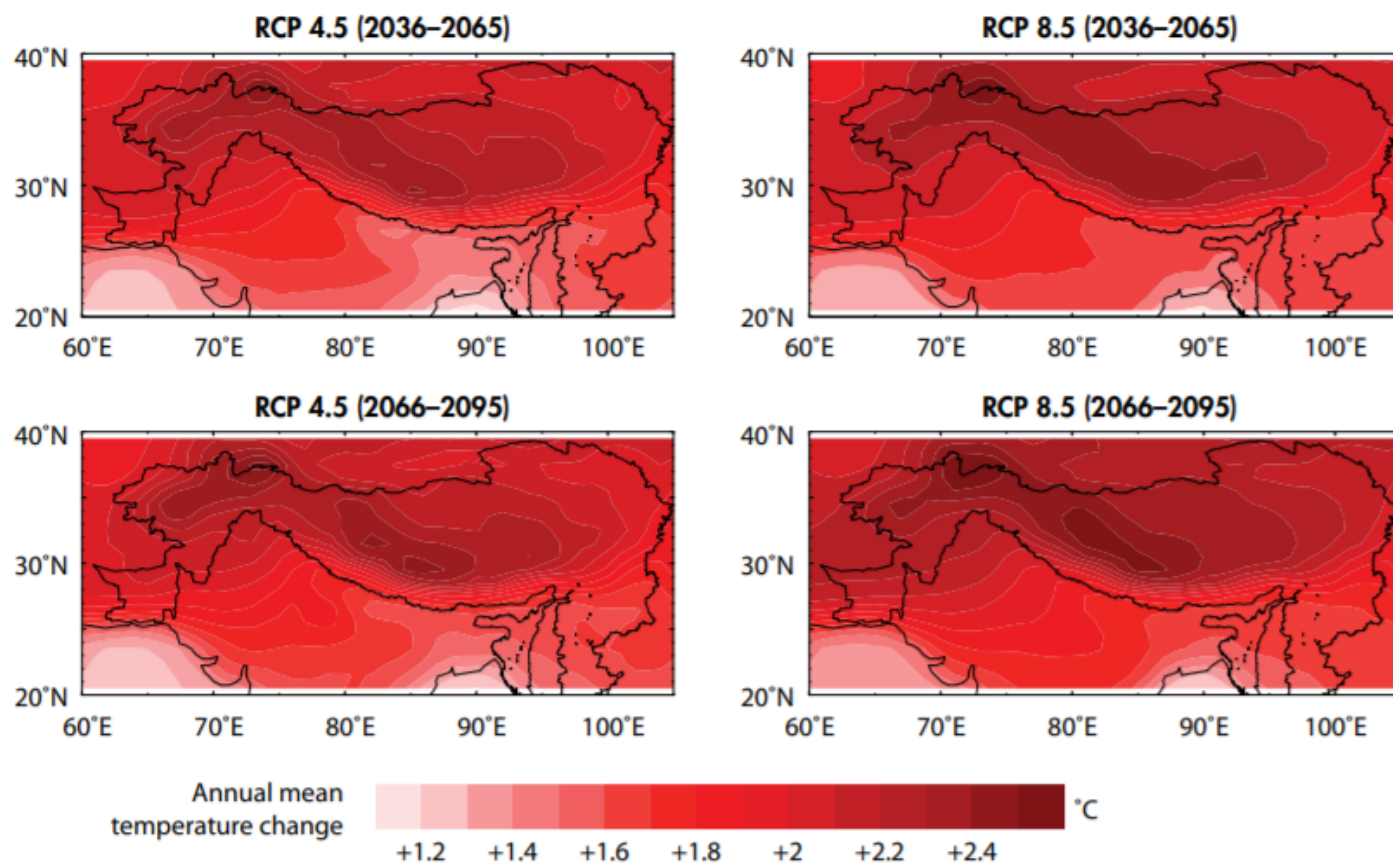
of the world population benefits indirectly from HKH resources and ecosystem services



rich agro-biodiversity



HKH – at the forefront of Climate change



THE HKH WILL WARM MORE THAN THE GLOBAL MEAN AND MORE RAPIDLY AT HIGHER ELEVATIONS

This figure shows projected spatial distribution of annual mean temperature change (°C) over the HKH for two representative concentration pathways (RCP 4.5 and RCP 8.5) over two time periods (2036–2065 and 2066–2096)



+35

new species discovered

each year in the eastern Himalaya between 1998 and 2008



1/4

of endemic species

in the Indian Himalaya could be wiped out by 2100



70–80%

of habitat lost

in biodiversity hotspots in the HKH (relative to 1500 AD)

RICH BIODIVERSITY IN THE HINDU KUSH HIMALAYA IS UNDER THREAT

The Hindu Kush Himalaya provides ecosystem services to two billion people, more than any other mountain system in the world.

Summary of the HKH Assessment Report



Our WEF nexus journey in the HKH region

International workshop

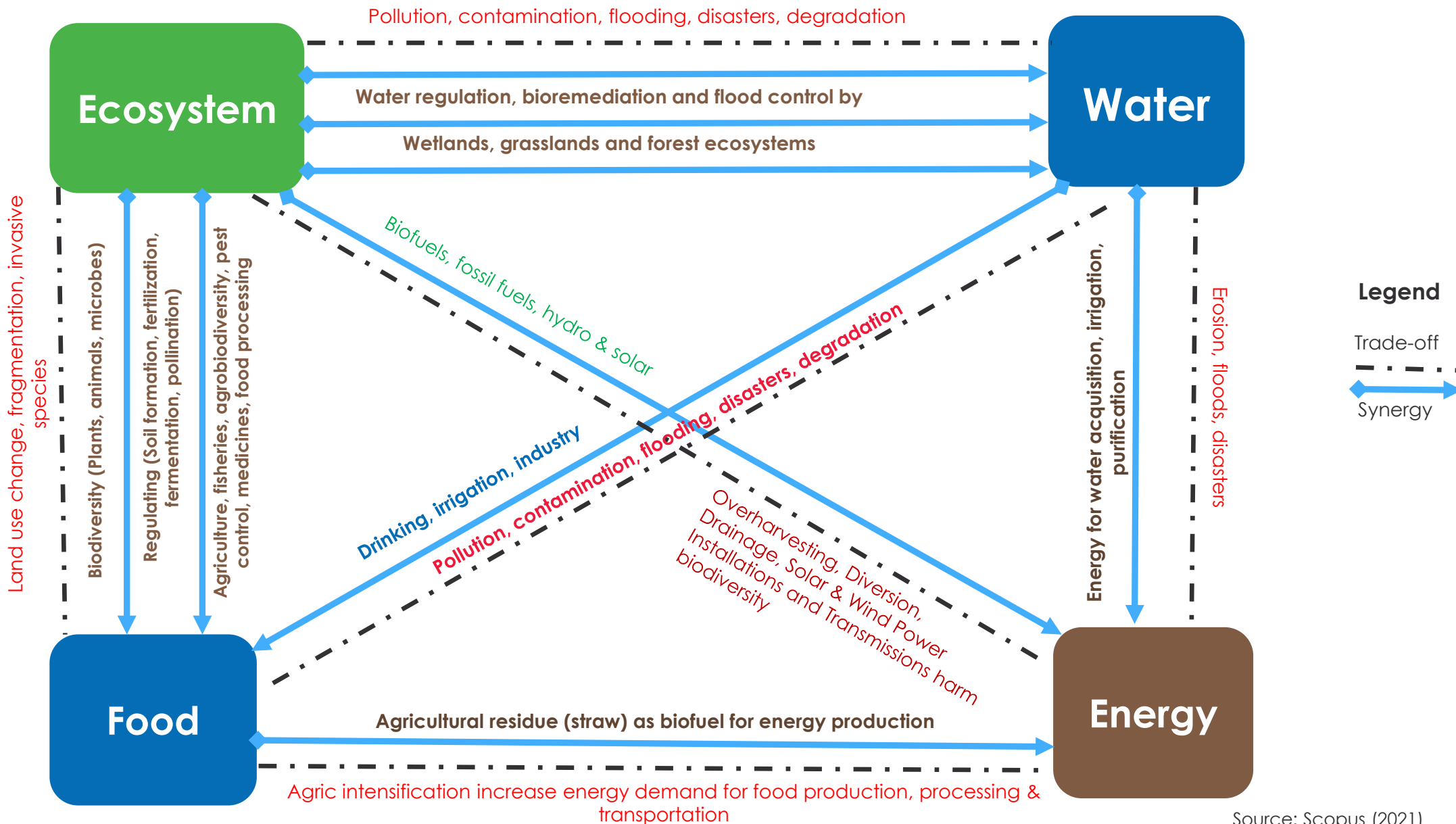
**Bridging Boundaries: Strengthening Regional Cooperation
Across Transboundary River Basins and Landscapes in the
Hindu Kush Himalaya**

Attended by more than 100 participants from over 20
countries

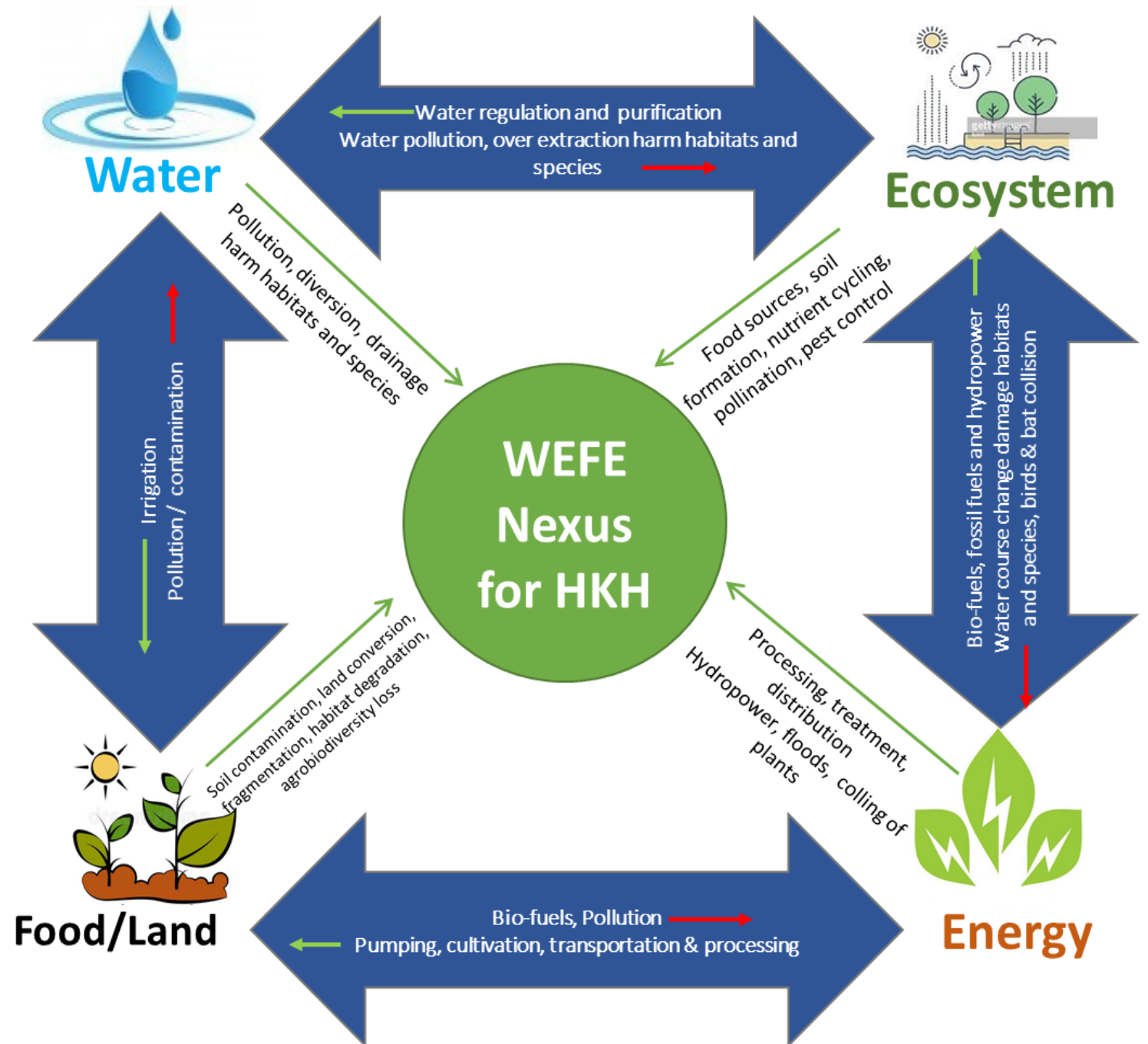
Kathmandu, Nepal (15 – 16 November 2018)

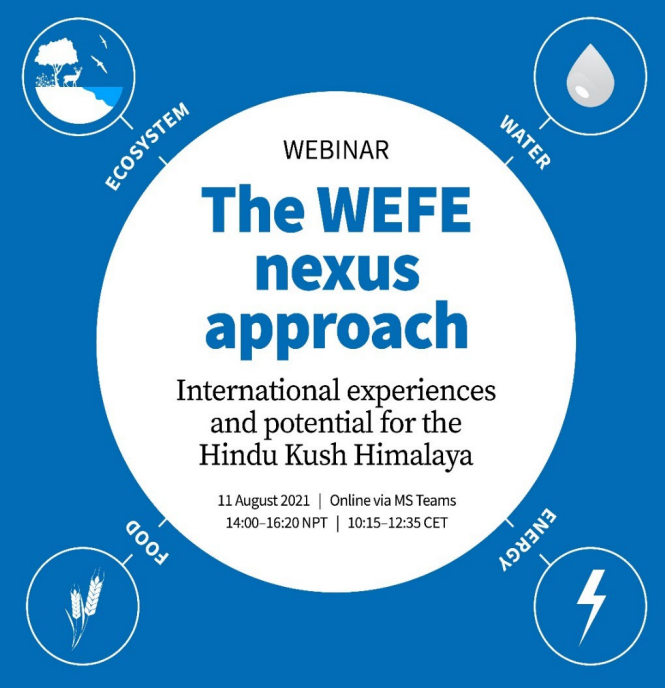


Water-Energy-Food-Ecosystems are interlinked



WEFE nexus for the Hindu Kush Himalaya





WEBINAR

The WEFE nexus approach

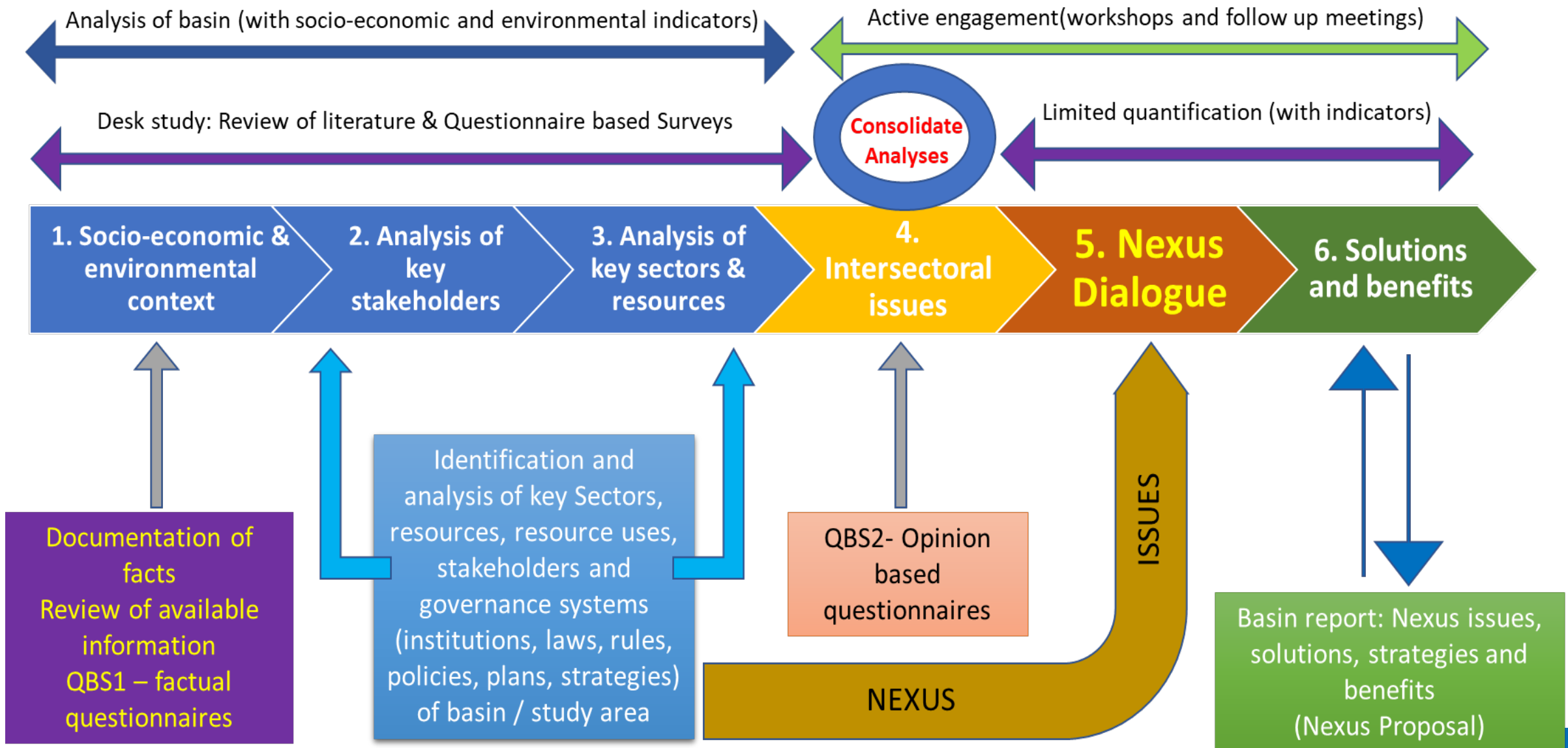
International experiences
and potential for the
Hindu Kush Himalaya

11 August 2021 | Online via MS Teams
14:00–16:20 NPT | 10:15–12:35 CET

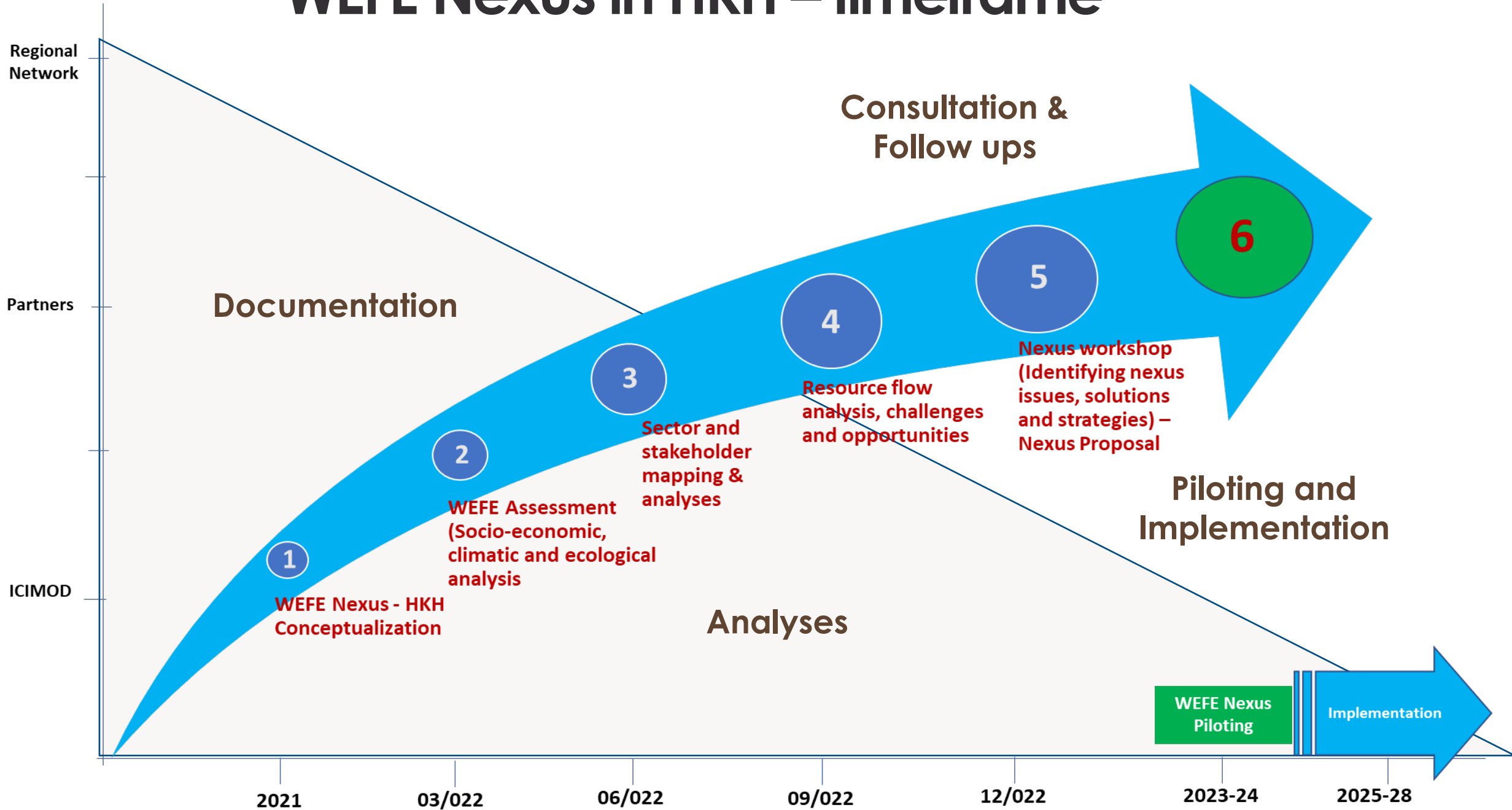


The draft WEFE nexus framework was shared with scientists, specialists, managers, conservationists, policy-makers and development professionals in webinars, workshops and science-policy dialogues

WEFE Assessment Process



WEFE Nexus in HKH – timeframe



Thank you



Protect the pulse.