

The role of FOREST EUROPE in forest monitoring



Bernhard Wolfslehner (EFI , Forest Europe)

C&I as key tool

FOREST EUROPE defined the pan-European concept of **Sustainable Forest Management** in 1993¹.

FOREST EUROPE has led to achievements such as the internationally agreed **guidelines, criteria and indicators** for Sustainable Forest Management.

- National forest inventories as backbone
- Focusing on SFM trends
- Allow for trans-national comparability

FOREST EUROPE, together with FAO and UNECE, produces the report “**State of Europe’s Forests**” (SoEF) every five years

¹Helsinki Resolution "General Guidelines for the Sustainable Management of Forests in Europe"

Focus of new Work Programme

- Revisit SFM, C&I and SoEF report
 - coherence of concepts, review indicators & uptake of results
- Forest Risk Knowledge Mechanism
 - create a platform to cope with forest-related risks and prevention
- Green Jobs and Forest Education
- Rapid response
 - FE as forum to exchange on emerging, urgent issues
- Communications

A new era for SFM

- SFM Think Tank to discuss on links to other forest-related concepts (e.g. circular bioeconomy, climate-smart, biodiversity-safe forestry) and reveal information needs
- Check C&I for their ability to answer forest questions and the requirements for additional information to create new SFM narratives
- Develop a set of key indicators that are bullet-proof
- Redesign the State of Europe Forests report around these key indicators

A community around indicators

- Collaboration with UNECE and FAO on next joint data collection already started
 - incl. a SoEF section in the FRA database, a new interface for data providers to be developed
- Collaboration with UNECE/FAO Team of Specialists on Forest Monitoring on further indicator development
- NFIs and EFINET project plus new H2020 project



Forest biodiversity indicators in the lens...

- ... "children" of the time in view of their development and data availability
- Pan-European forest biodiversity indicators helped to:
 - Find common definitions
 - improve monitoring instruments
 - allow for time series reporting
- Also...
 - Contains proxy indicators (e.g. protected areas)
 - Limited means for comprehensive assessment on the progress of maintaining and enhancing biodiversity

Forest Risk Knowledge Mechanism

- Provide a platform for information related to forests risks
- New forms of information that needs to be related to SFM
- Update of forest damage indicator (final conference end of Sept. in Vienna)
- A new resilience indicator?



Employment and Education

- New key activity by FOREST EUROPE
- New study by the Thünen Institute finished
- Current employment indicator rather traditional – check for opportunities to integrate Green Jobs



And seeking synergies....

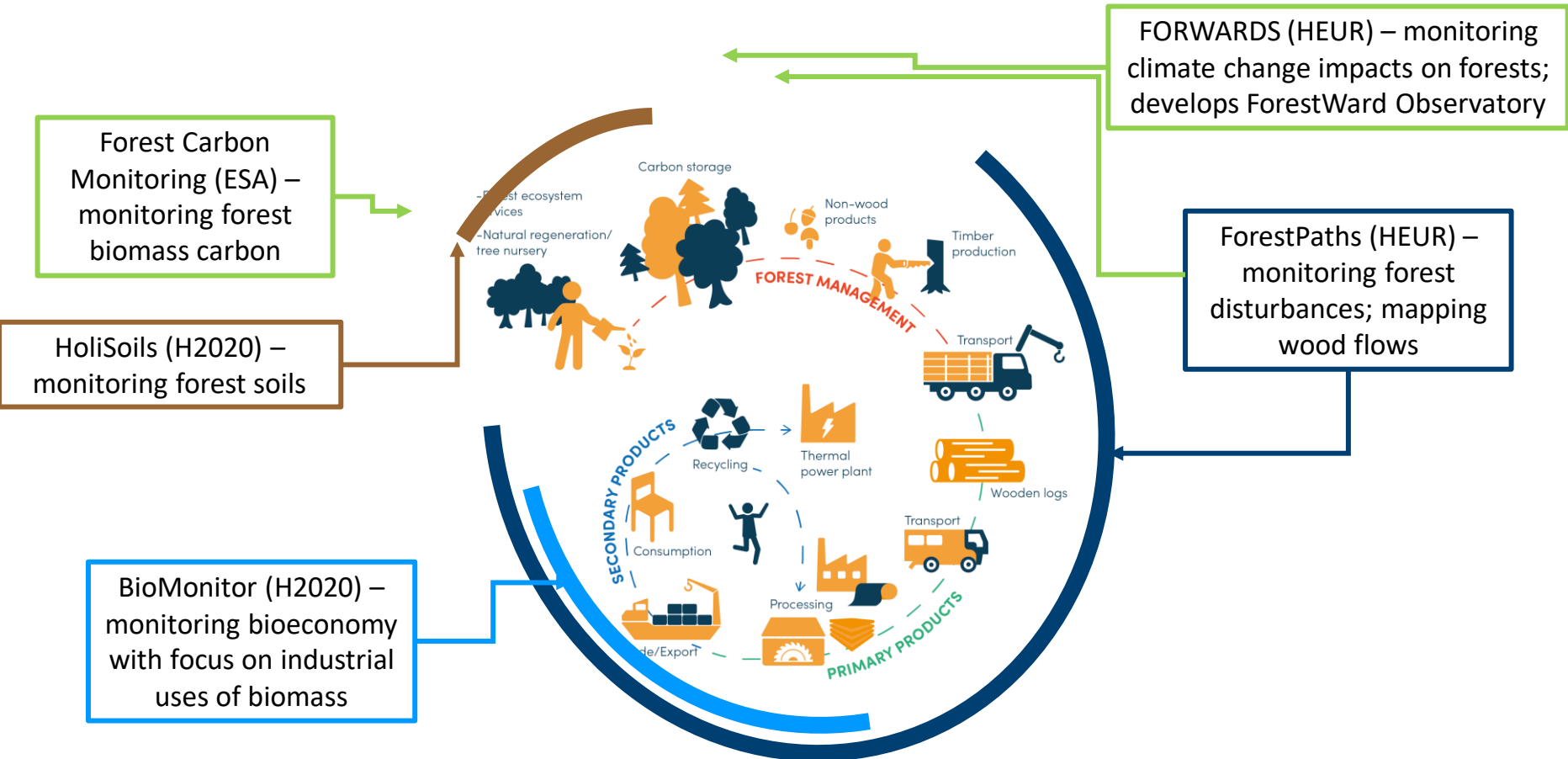


Figure: courtesy of RESONATE project

What's ahead...

- Preparation for data collection starts this year together with FAO and UNECE
- Investments into the FAO database interface
 - Requires resources
 - Makes life easier for national correspondents
- Close follow of EU activities on forest monitoring and the creation of synergies
- Further work on key indicators for SFM in 2023
- New concept for SoEF 2025



Forest Europe growing life

Ministerial Conference on the Protection of Forests in Europe

foresteurope.org



/FORESTEUROPE



@FORESTEUROPE



/company/FORESTEUROPE

Head of LUBo:

Thomas Haußmann

thomas.haussmann@foresteurope.org

Team leader EFI FE Team:

Dr. Bernhard Wolfslehner

bernhard.wolfslehner@efi.int