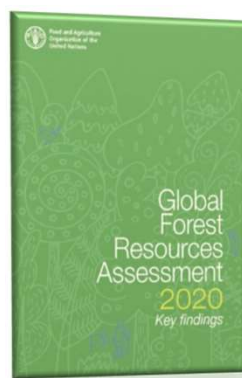




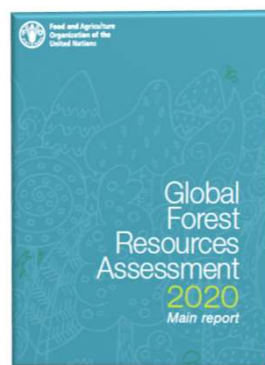
# FRA 2020 OUTREACH



143,000



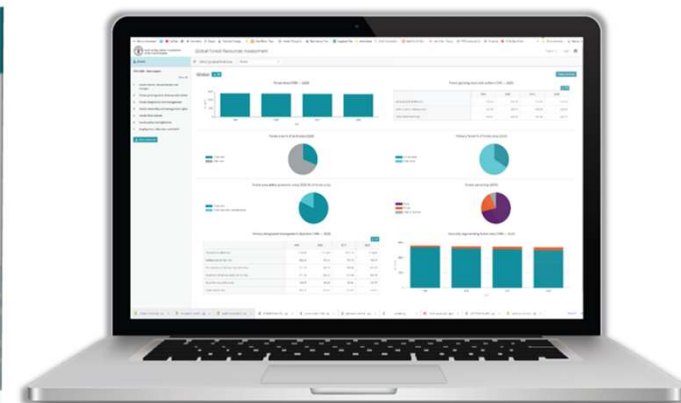
65,000



36,000



35,000



**Altogether >140 000 users**



# FRA 2020 REMOTE SENSING SURVEY

**400 000**  
samples analyzed



using  
**Collect Earth Online**

A network of more than  
**800**



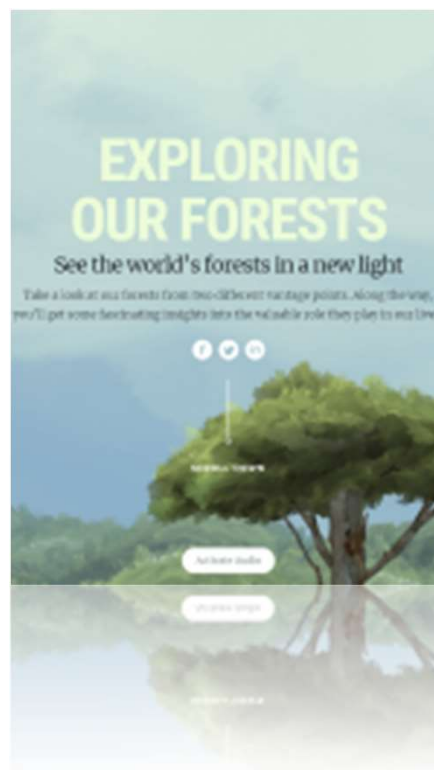
national experts from  
**126**  
countries

A methodology  
focused on land use  
changes and empowering  
capacities  
at national level



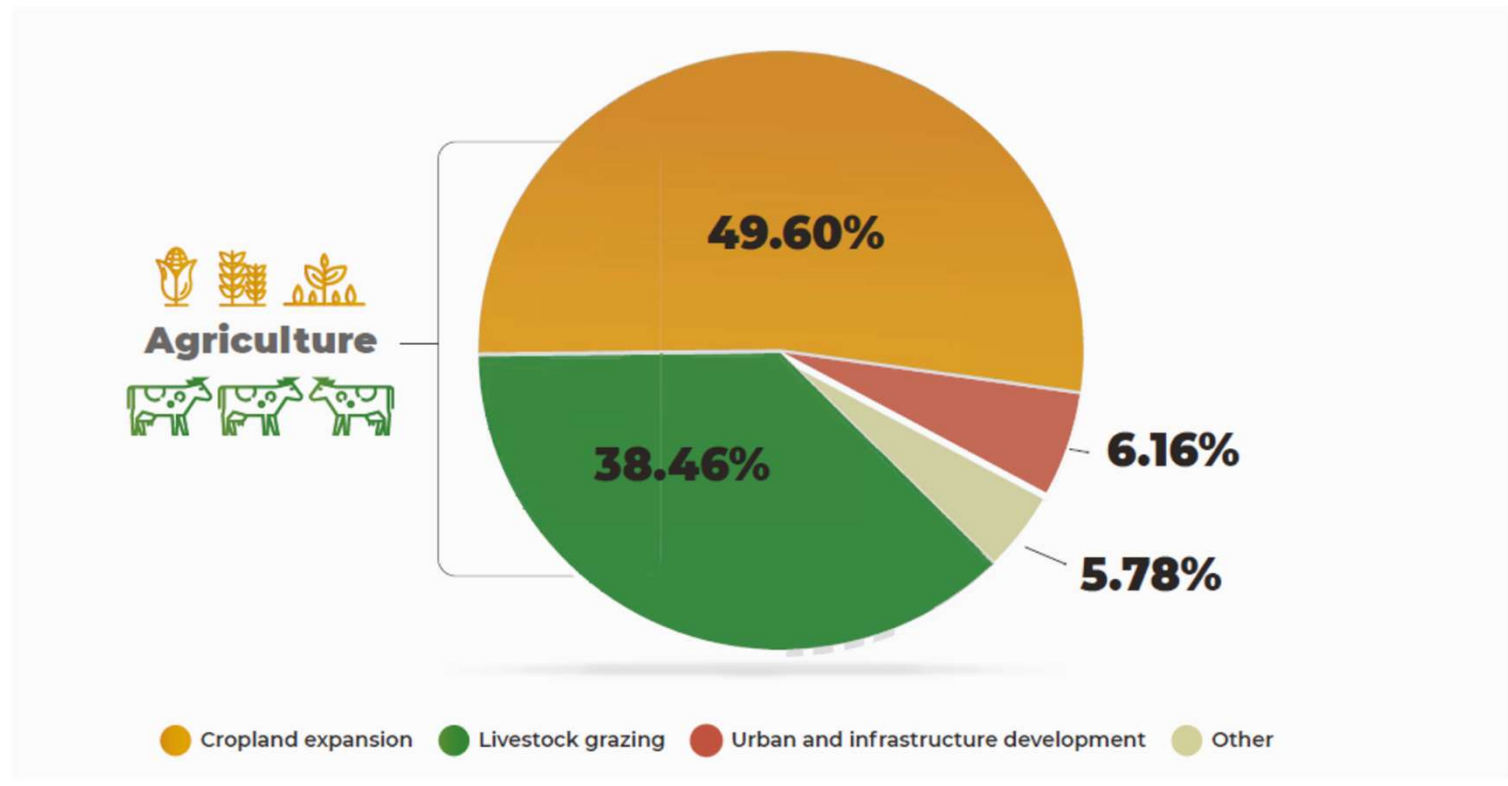
The Remote Sensing Survey was part of the Global Forest Resources Assessment 2020

# FRA 2020 REMOTE SENSING SURVEY



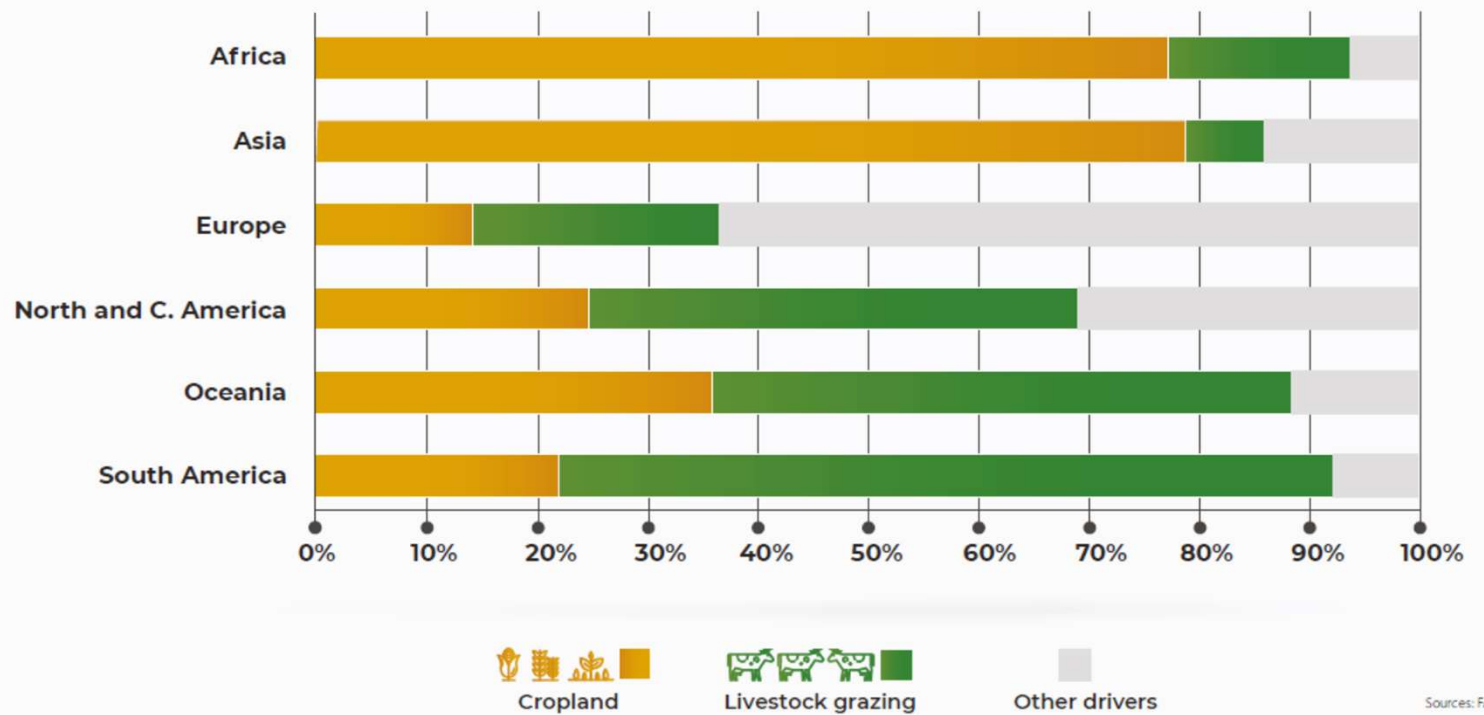
# FRA 2020 REMOTE SENSING SURVEY

Global causes of deforestation 2000 - 2018



# FRA 2020 REMOTE SENSING SURVEY

## Regional differences in deforestation drivers 2000-2018



Sources: FAO

# FRA 2025 REMOTE SENSING EXPERT MEETING

Around 40 representatives from Universities, research centers and space agencies gathered to improve the future remote sensing work under the FRA:

- further deforestation drivers
- trees outside forests
- forest degradation and restoration at global, regional and biome levels
- a map of the world's forests



19-20 September 2022

**FRA 2025**

# THE GLOBAL CORE SET



FRA 2025





# FRA 2025 – COUNTRY REPORTING

**2022**

- ~~FRA 2025 Expert consultation~~
- COFO
- National Correspondents nominations
- FRA platform improvements

**2023**

- Data collection and training
- Review
- Support for Remote Sensing

**2024**

- Flexible updates
- Data analysis
- Report writing

**2025**

- Key Findings
- Full report
- Database

# EXPERT CONSULTATION



- Organized to guide finalization of scope and other technical aspects of FRA reporting.
- Organized on-line and in writing on FAO's Global Forum on Food Security and Nutrition
- 67 contributions from 15 countries, including 29 attachments
- Comments provided on all five background papers

**FRA 2025**

# NEXT STEPS

- **NC Nominations**
- **Platform** finalization
- **Committee on Forestry (inclusion of restoration in the scope)**
- **Flexible** reporting



# RESTORATION MONITORING?

- Country's forest restoration commitments
- Law
- Areas
- Targets



# PARTNERSHIPS



Collaborative Forest Resources Questionnaire (**CFRQ**) partners:

- **pan European reporting** FAO, FOREST EUROPE and UNECE
- **Strengthening collaboration** with OFAC/COMIFAC

Collaborative Partnership on Forests (**CPF**) - the **Global Core Set** of Forest related Indicators

Global Forest Observations Initiative (**GFOI**)

+ other initiatives, including with UN entities

**FRA 2025**



2025

GLOBAL FOREST  
RESOURCES  
ASSESSMENT

**THANK YOU**  
**#FRA2025**

[WWW.FAO.ORG/FOREST-RESOURCES-ASSESSMENT](http://WWW.FAO.ORG/FOREST-RESOURCES-ASSESSMENT)



with the financial support of



**FRA 2025**