



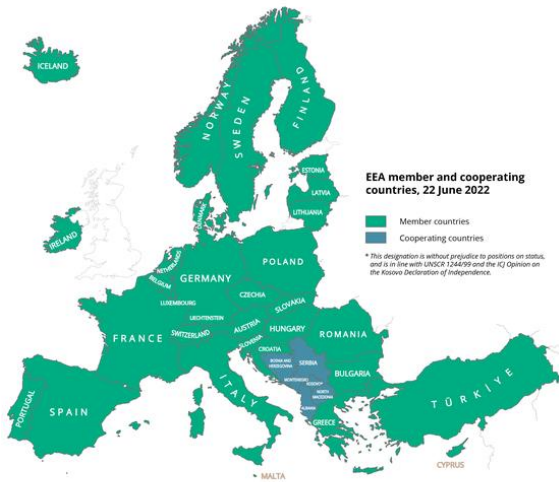
Information needs on forest damages/disturbances for biodiversity monitoring

Dr. Annemarie Bastrup-Birk

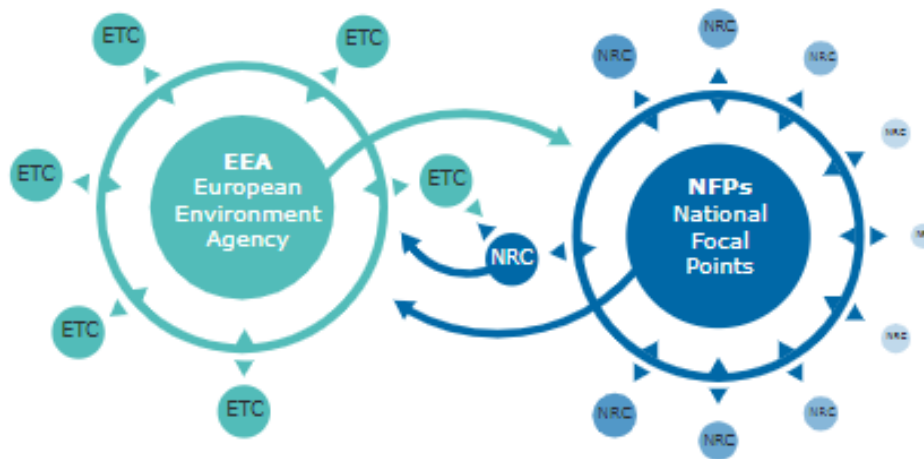
Expert Forest information and assessments

European Environment Agency

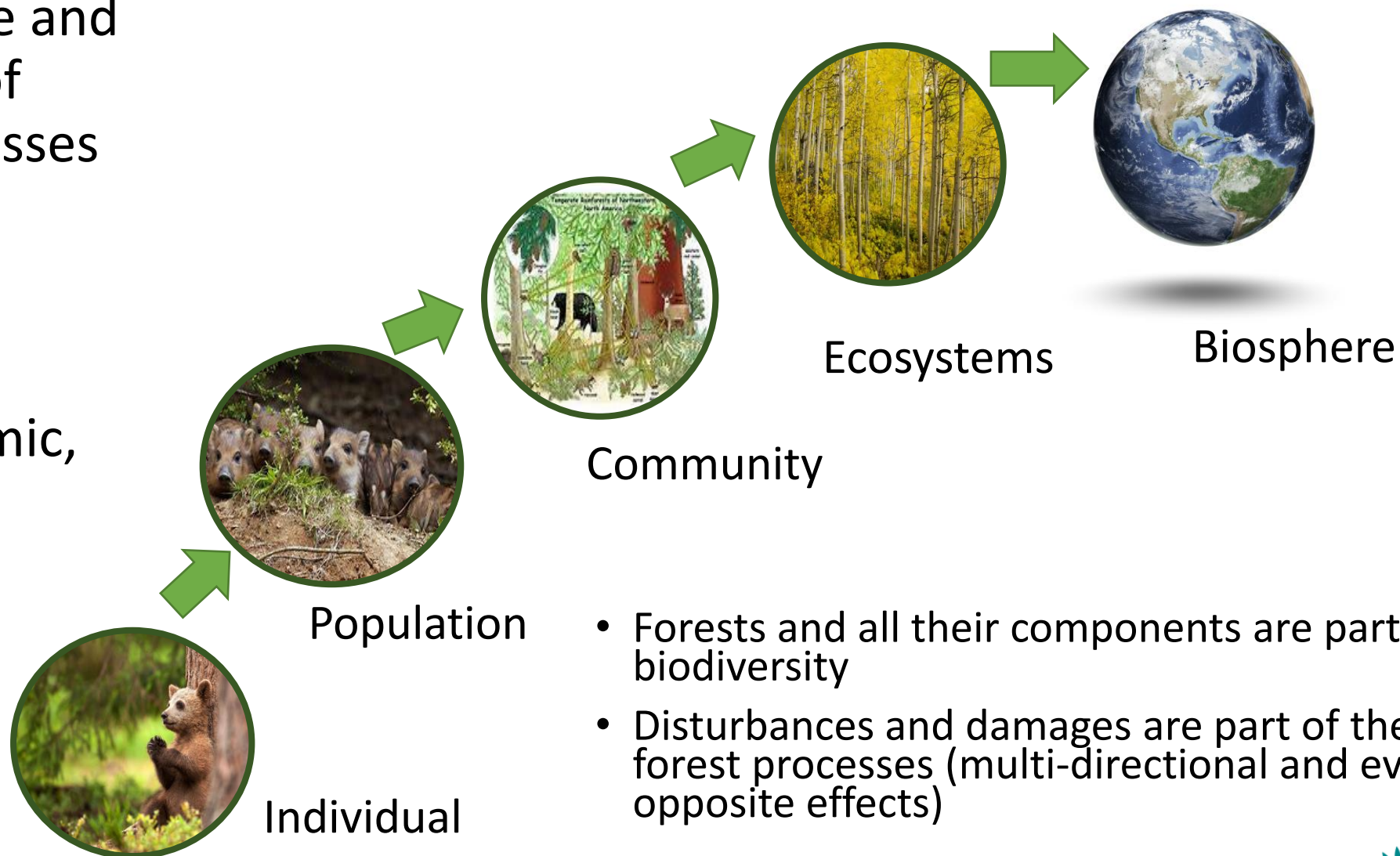
Delivering data and knowledge to achieve Europe's vision on climate and environment



- [European environment information and observation network \(Eionet\)](#)

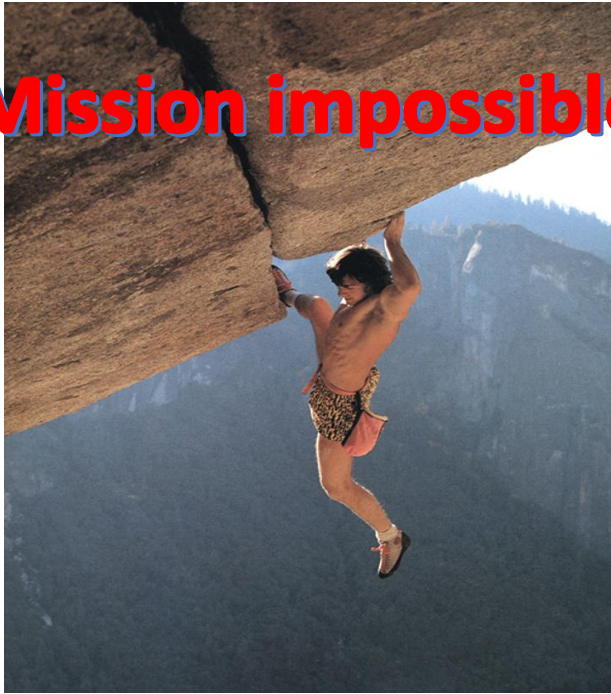


- Biodiversity is life and the foundation of ecosystem processes and functions
- Number, variety, variability of life
- Genetic, taxonomic, ecological



- Forests and all their components are part of biodiversity
- Disturbances and damages are part of the forest processes (multi-directional and even opposite effects)

Mission impossible

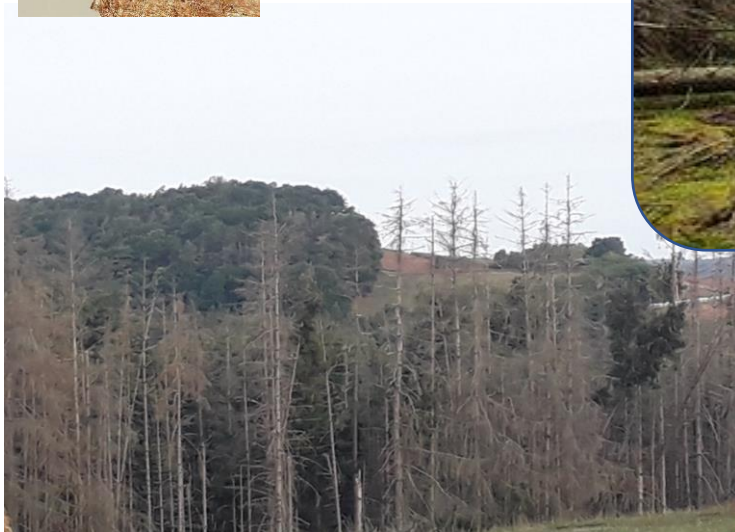
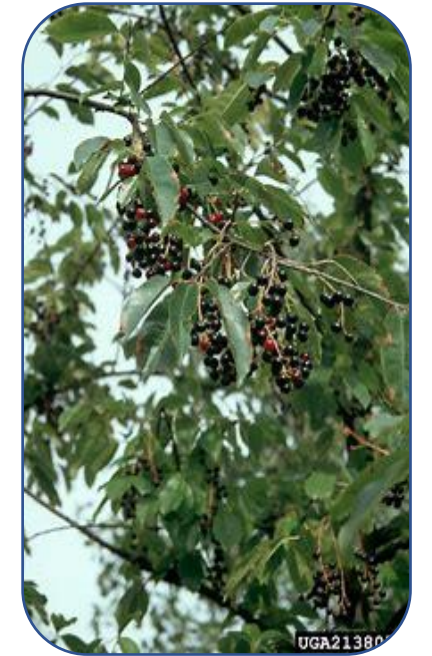
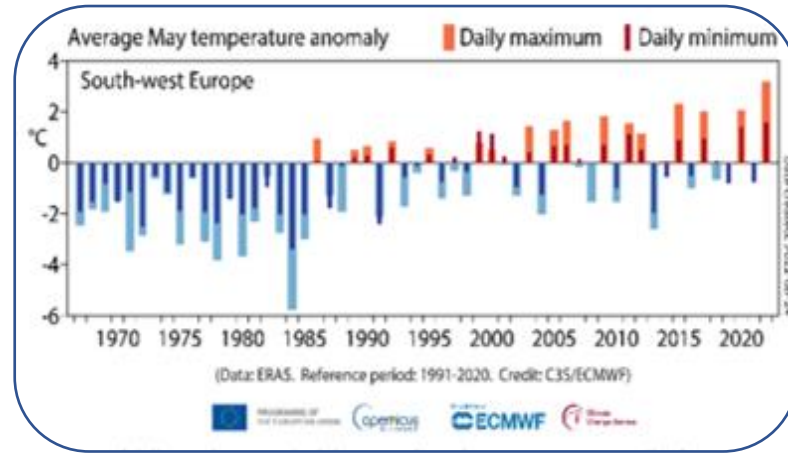


- Measuring the impacts of forest damages and disturbances on biodiversity is doomed mission impossible...
- What do we want? Healthy, diverse, resilient and productive forests
- How do we get there? Knowing that different ecosystems experience different dominant disturbances regimes

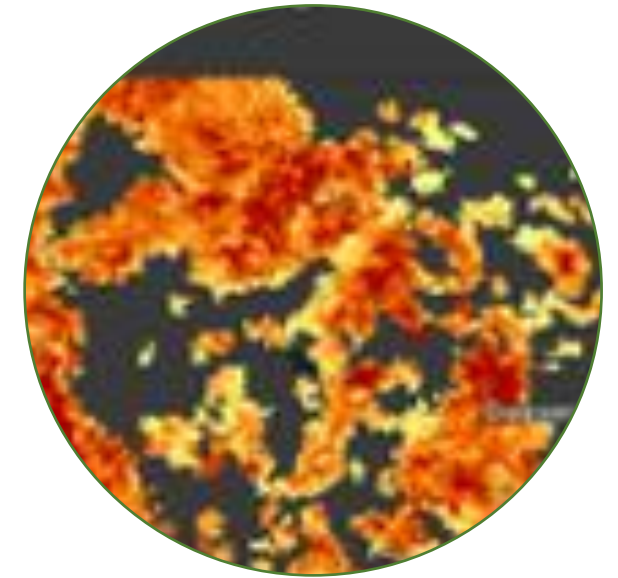
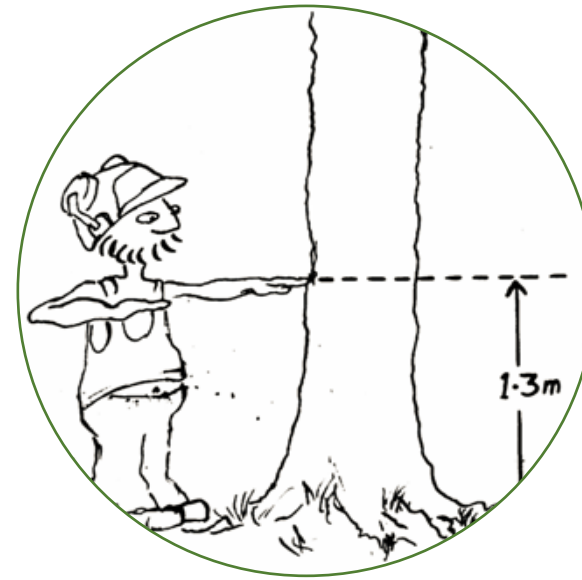


DPSIR

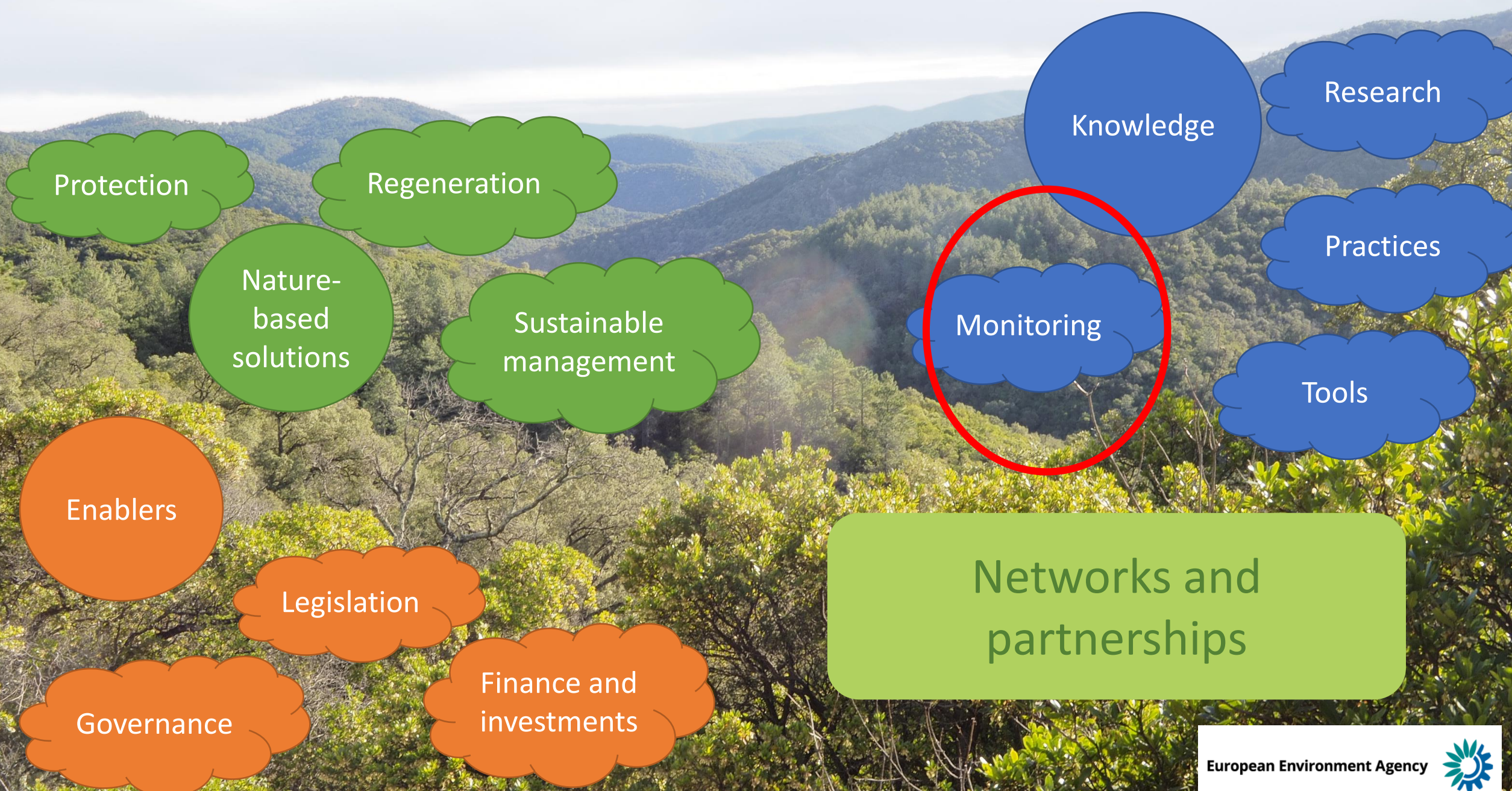




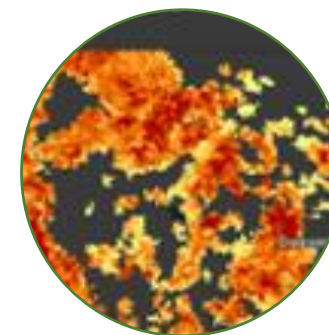
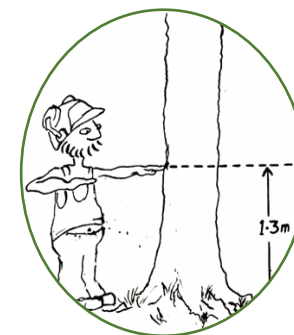
- Status and changes in forest composition, structure and function (biodiversity)
- Forest ecosystem dynamics

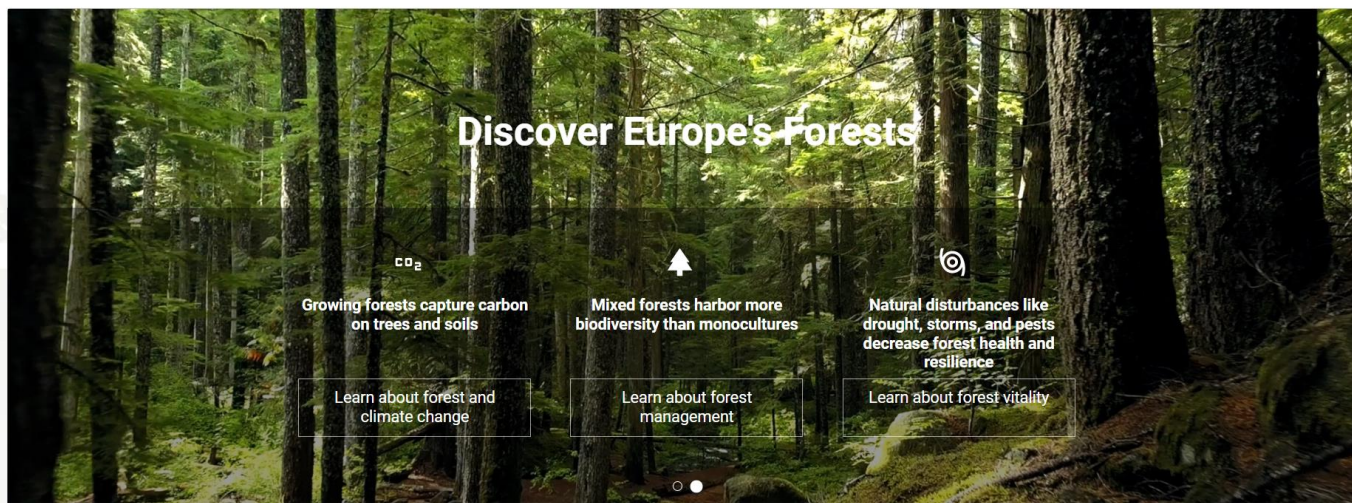


Measures, Responses and Solutions



- Indicators selected for monitoring forest ecosystem restoration (EU Nature Restoration Law)



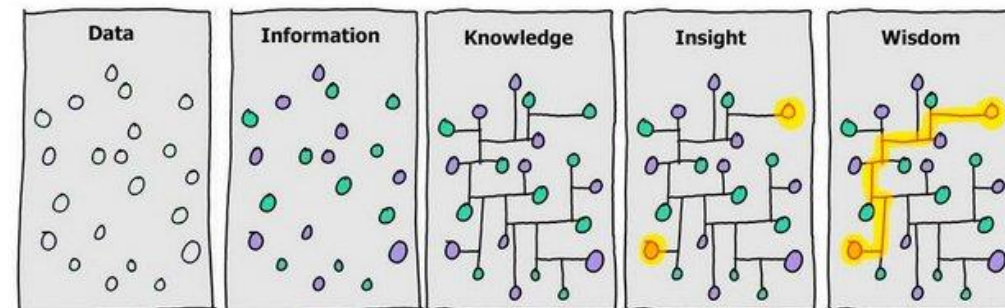


- Direct and indirect indicators
- State and trend indicators
- Information system for summarised results

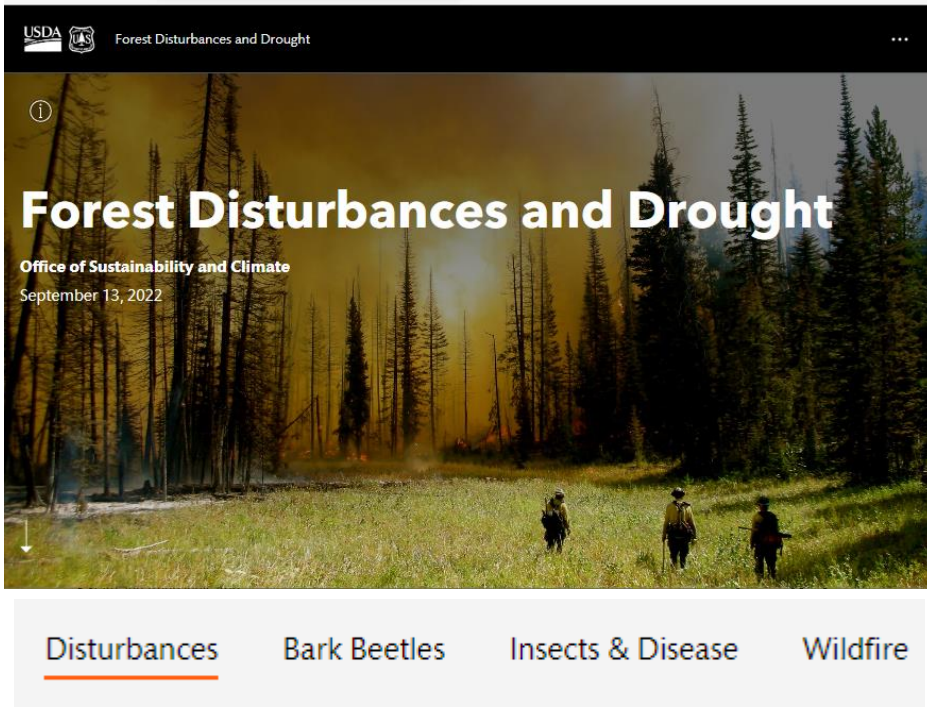
Welcome to FISE

FISE is the entry point for sharing information with the forest community on Europe's forest environment, its state and development.

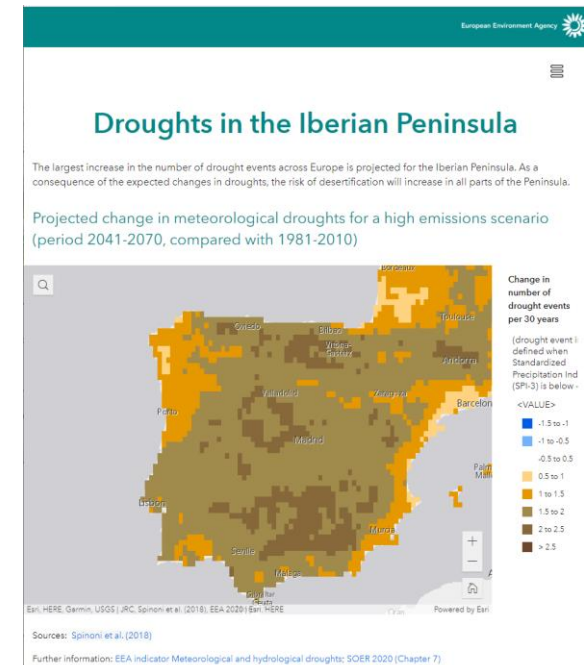
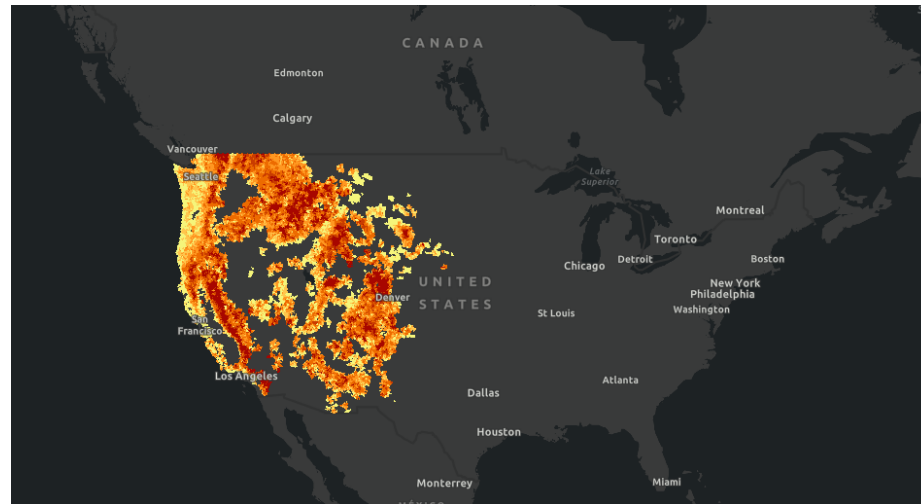
FISE brings together data, information and knowledge gathered or derived through key forest-related policy drivers.

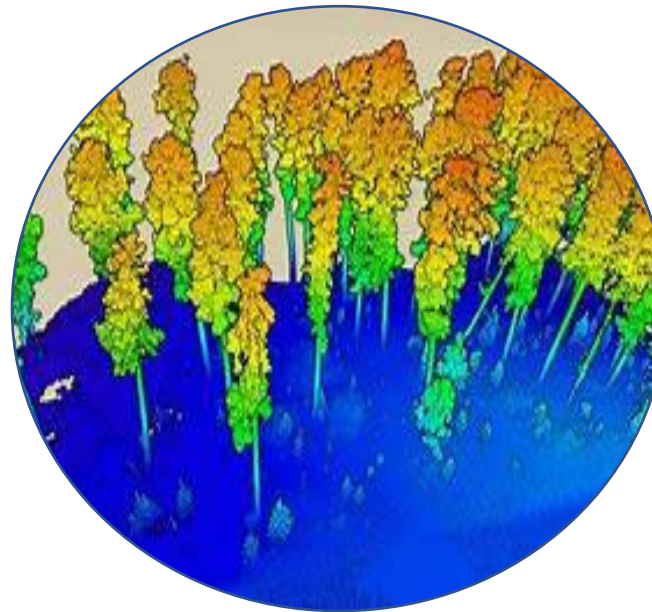
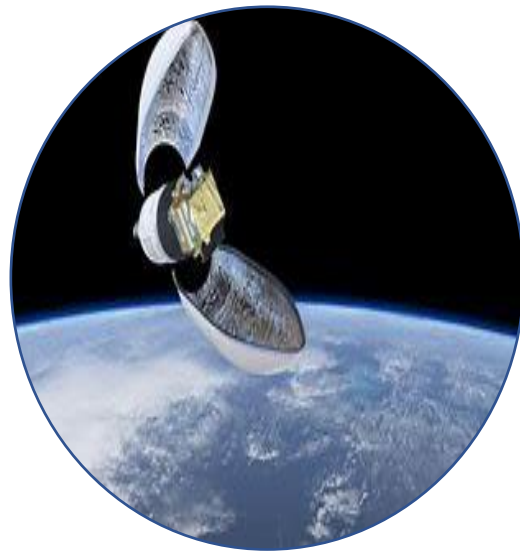


Cartoon by [David Somerville](#), based on a two pane version by [Hugh McLeod](#).]

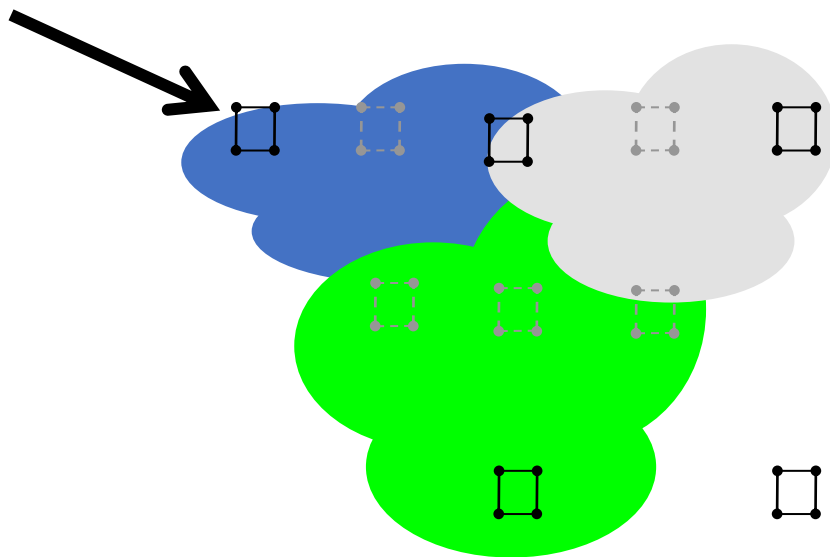


- FISE expansion (and/or others)
- Based on data and information collected by MS, research, organisations
 - Statistics, visualisation, key messages, access to relevant information, example of practices,
 - Storymaps

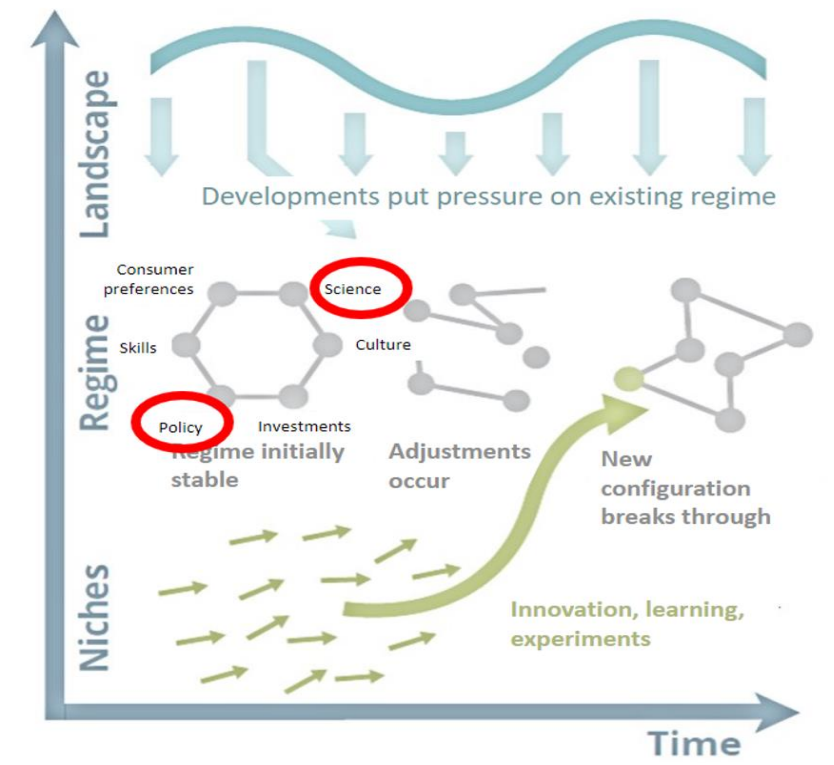
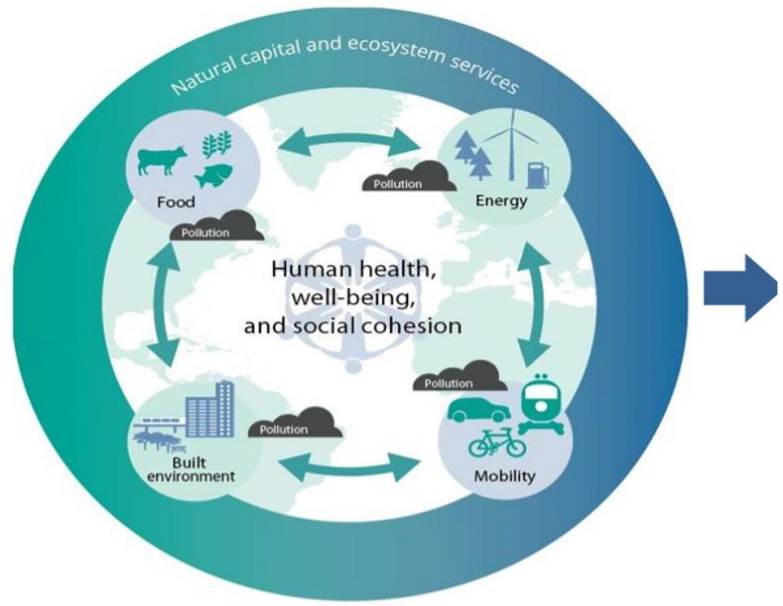
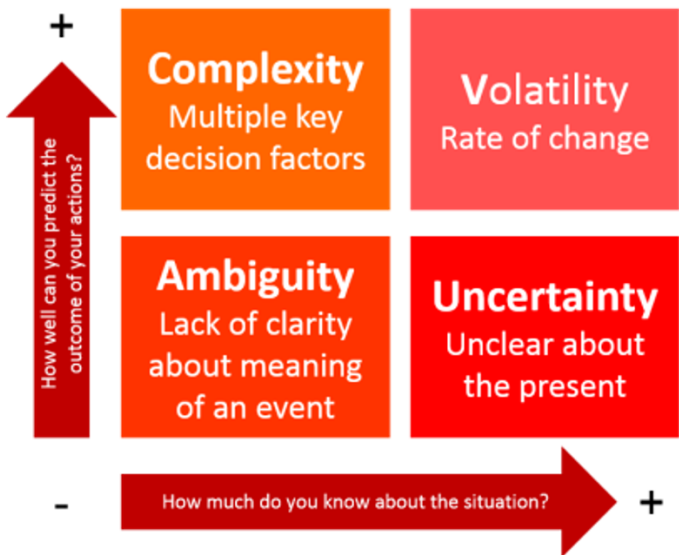




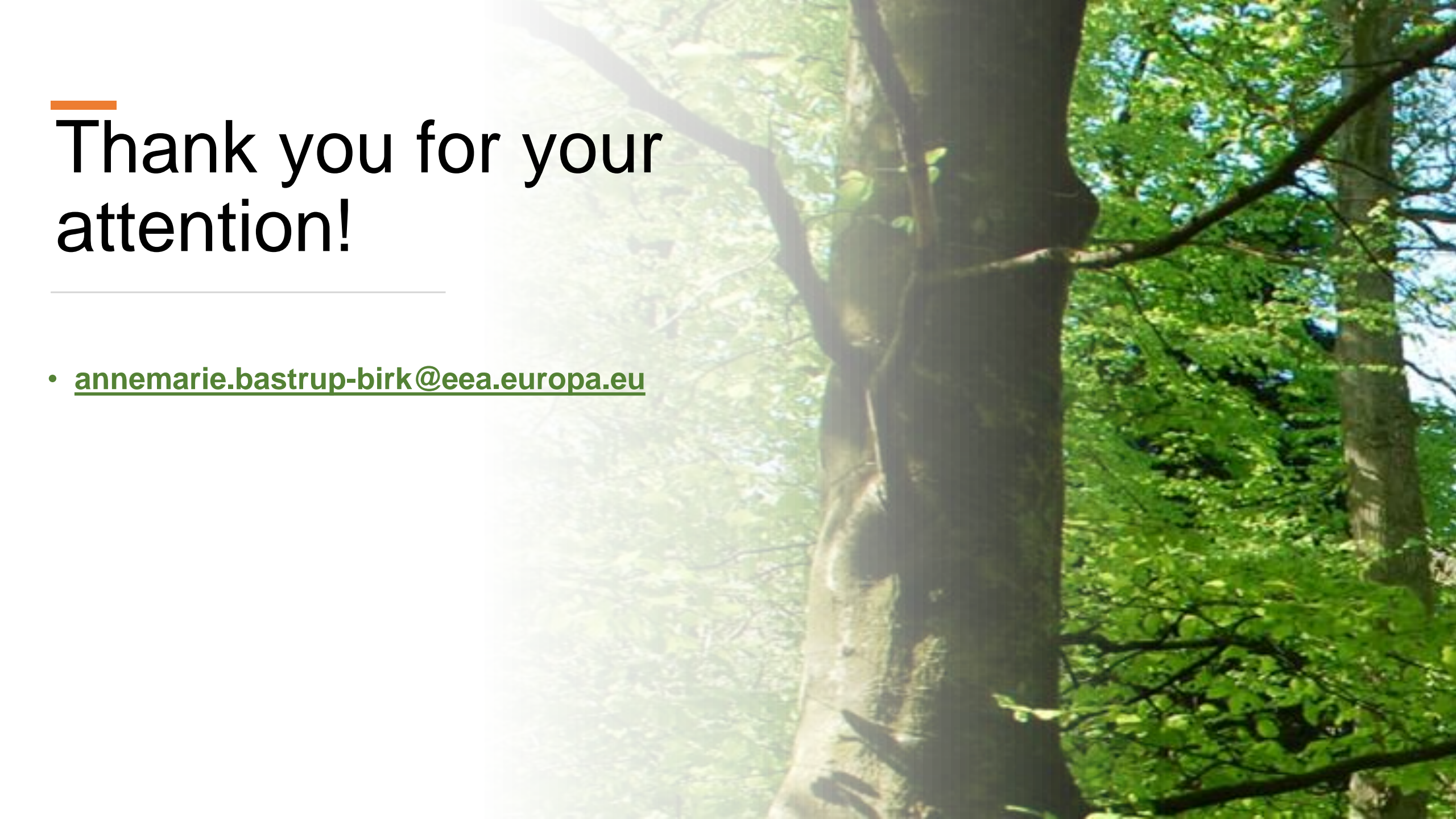
Emphasizing



- Data quality, availability and comparability (harmonisation)
- Use of innovative technology
- Integration into existing monitoring and inventory systems



- Are our policies aligned?
- Should we revisit the monitoring paradigm: monitoring, data, indicators assessments, knowledge, communication?
- Is the institutional set-up adequate?
- Can we get further out of our bubbles/silos?



Thank you for your
attention!

- annemarie.bastrup-birk@eea.europa.eu