

Item 3 (c)

Implementation of the AGTC Agreement

Performance targets

ECE/TRANS/WP.24/2022/3

Availability of performance data



WP.24 requested:

- Survey on availability of performance data
- Availability of data through other UNECE WPs
- Research on data availability through projects

Survey (11 responses)



(a) Train performance:

Country	Data on train				No train performance data
	nominal speed	length	weight	axle load	
Austria		x	x	x	
Czechia			x		
Denmark					x
Germany					x
Latvia	x	x	x		
Lithuania	x	x	x		
Norway	x	x	x	x	
Republic of Moldova					x
Russian Federation	x	x	x	x	
Serbia					x
Switzerland		x	x		
	36%	55%	64%	27%	36%

(b) Performance at terminals:

Country	Data on times between/on			No performance data for terminals
	acceptance of goods and departure of trains	arrival of trains and availability of wagons for unloading	waiting times for road vehicles	
Austria				x
Czechia				x
Denmark				x
Germany				x
Latvia	x	x		
Lithuania				x
Norway	x	x		
Republic of Moldova				x
Russian Federation	x			
Serbia				x
Switzerland	x	x		
	36%	27%	0%	64%

Survey (11 responses)

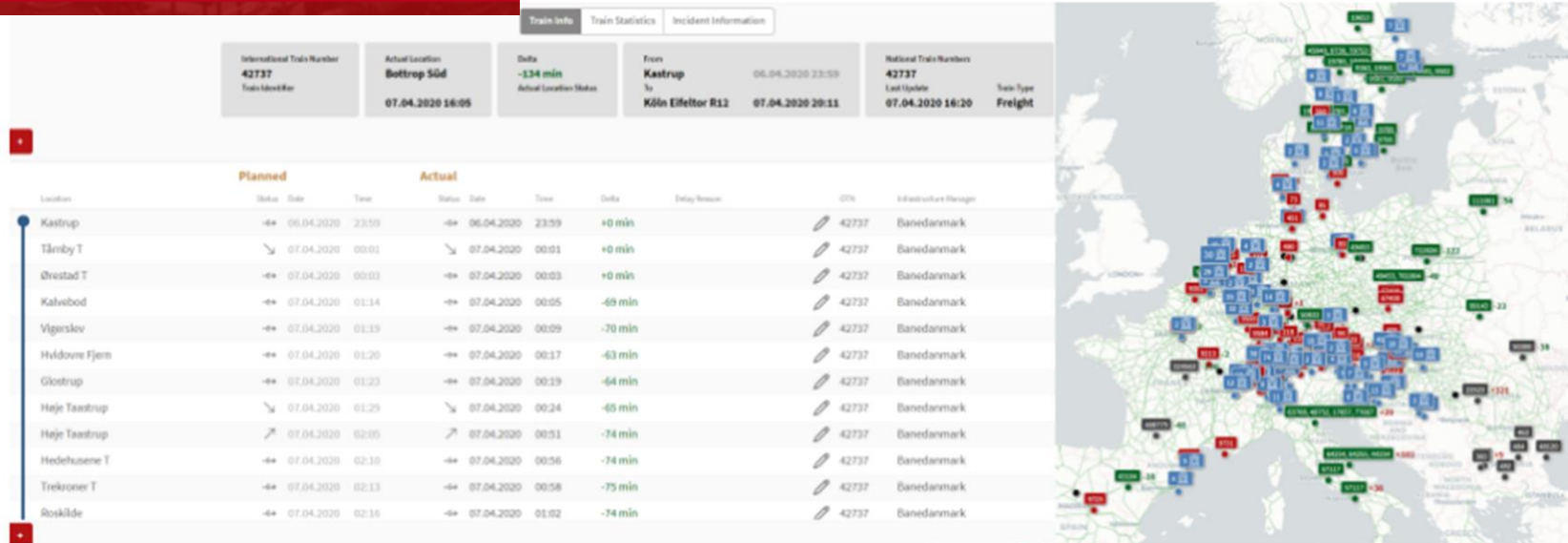
(c) Performance at intermediate stations

Country	<i>Data on times of stops for/at</i>				<i>No performance data for intermediate stations</i>
	exchange of wagons	border-crossing points	gauge interchange stations	ferry links/ports	
Austria					x
Czechia					x
Denmark					x
Germany					x
Latvia	x	x			
Lithuania	x	x			
Norway		x			
Republic of Moldova					x
Russian Federation		x	x		
Serbia					x
Switzerland		x			
	18%	45%	0.1%	0%	54%

Data availability from WP.6:

- No such data is collected

Other data availability (train performance)



Can we use real traffic data to deduce the train performance?

TIS PROVIDES THE FOLLOWING FEATURES IN REAL TIME:

- Real-time train traffic data via the Internet (contracted timetable, forecast, running advice, delays)
- Real-time train information in the TIS graphical interface shows real-time visualisation of international trains (network overview, space-time diagrams, train run reports, etc.)
- Collection and exchange of railway traffic data from/with European traffic management systems
- Incident management



Data for EU only

Other data availability (train performance)



Main parameters of the index



Index measurement unit

USD/FEU



Routes

Dostyk/Altynkol –
Brest/Bruzhi/Svislach/Kaliningrad



Average transit time

- 2019 – 5,61 days
- target for 2024 – 3,5 days



Average speed

- 2019 – 1 008 km/day,
- target for 2024 – 1 300 km/day



Index operator

JSC UTLC ERA



Update period

Monthly



Update procedure

Analytics publication in
English, Russian and Chinese

Other data availability (terminals performance)

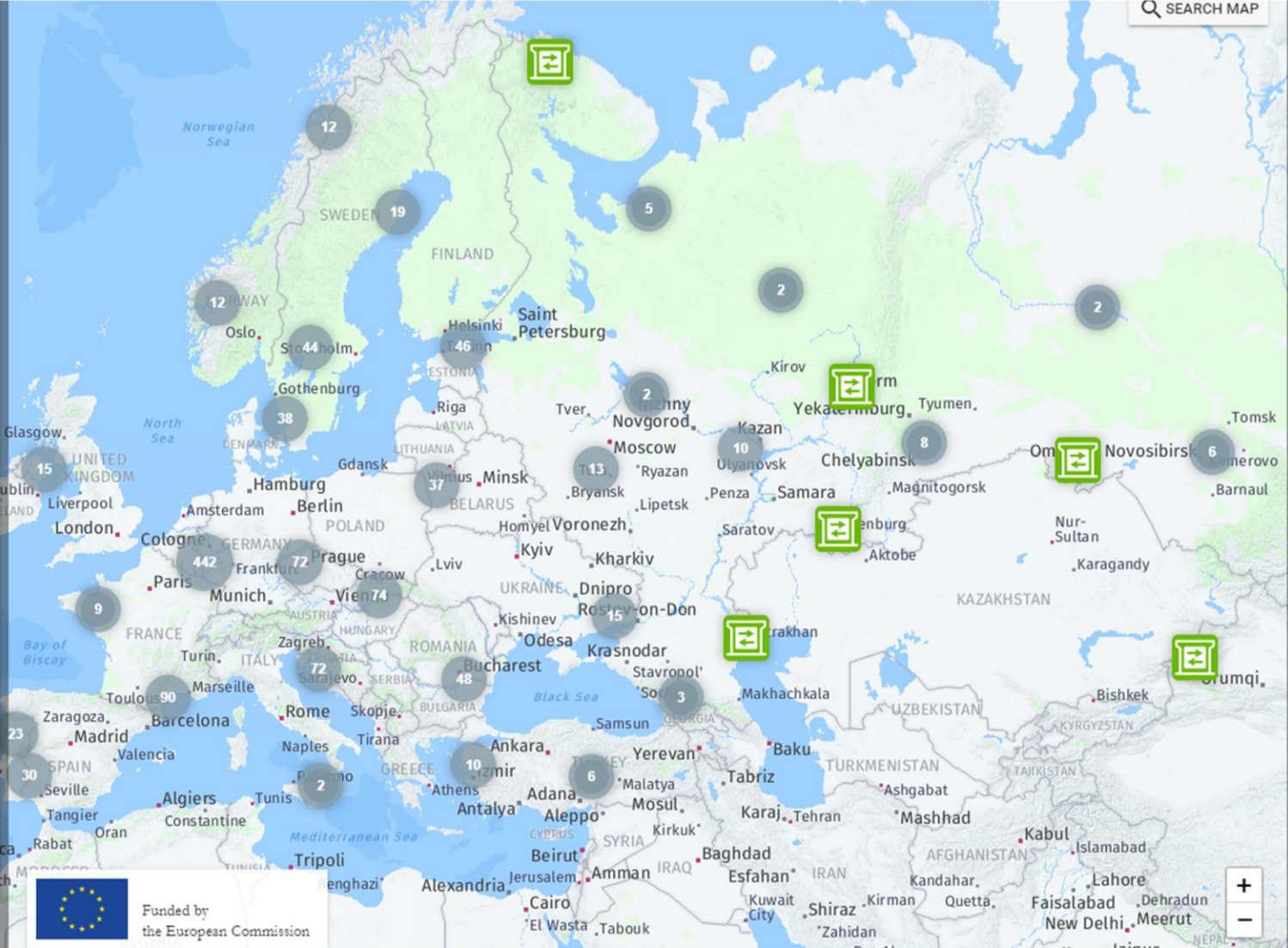
Find Facilities

Show Advanced filters CLEAR ALL

Select a filter to find facilities.

Facility type

- Passenger station
- Intermodal terminal
- Multifunctional rail terminal
- Public siding
- Private siding
- Marshalling yard
- Storage siding
- Maintenance facility
- Other technical facility
- Relief facility
- Refuelling facility
- Mobile service provider



Facilities visible on the map

Type	Name
	3MCT - North Sea Port 3MCT (Vlaeynatie - Swagemakers)
	6th Harbour Dock NhS (Kaai 332 - 344) NHS Nova & Hesse-Noord Natie Stevedoring N.V.
	A Coruña - San Diego Administrador de Infraestructuras Ferroviarias (ADIF)
	Aarau Hupac Intermodal AG
	ABES Terminal Katoen Natie Terminals n.v. / A.B.E.S n.v.


1-5 of 1,139

Rows per page: 5

Map legend icons

Facility types

Passenger Station	Intermodal Terminal
Multifunctional Rail Terminal	Public Siding
Private Siding	Marshalling Yard
Storage siding	Maintenance facility



Funded by the European Commission

Other data availability (terminals performance)

DUSS-Terminal Landshut

EXPORT TO PDF SEND FEEDBACK CLOSE

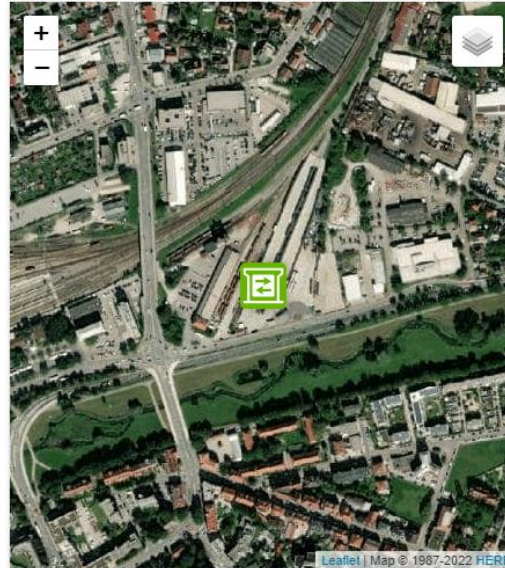
GENERAL INFORMATION SERVICES SF DESCRIPTION CHARGES ACCESS CONDITIONS CAPACITY ALLOCATION LINKS AND DOCUMENTS

Introduction

Facility name:	DUSS-Terminal Landshut
Facility type:	Intermodal terminal
Facility/operator exempted according Reg. (EU) 2017/2177, Art. 2:	No
Purpose of this SF description:	No data available
Facility located in:	Seaport: - Inland port: - Freight village: -
Presentation of the Service Facility:	No data available
Link where additional documents are published:	No data available

Service facility operator and owner

Facility operator:	DUSS mbH
UIC company code (RICS):	No data available
Operator type:	No data available



* Parameter updated by Portal Administration Last updated: 2019-04-26 Main data source: SGKV/UIRR



No data on performance

Availability of performance data



Way forward:

- Start somewhere – direct collection train performance (length, weight), BCR performance (stop at the border)
- Collect information from more CPs
- Consider other sources? Real time data / Eurasian Rail Alliance Index