



# About IsDB

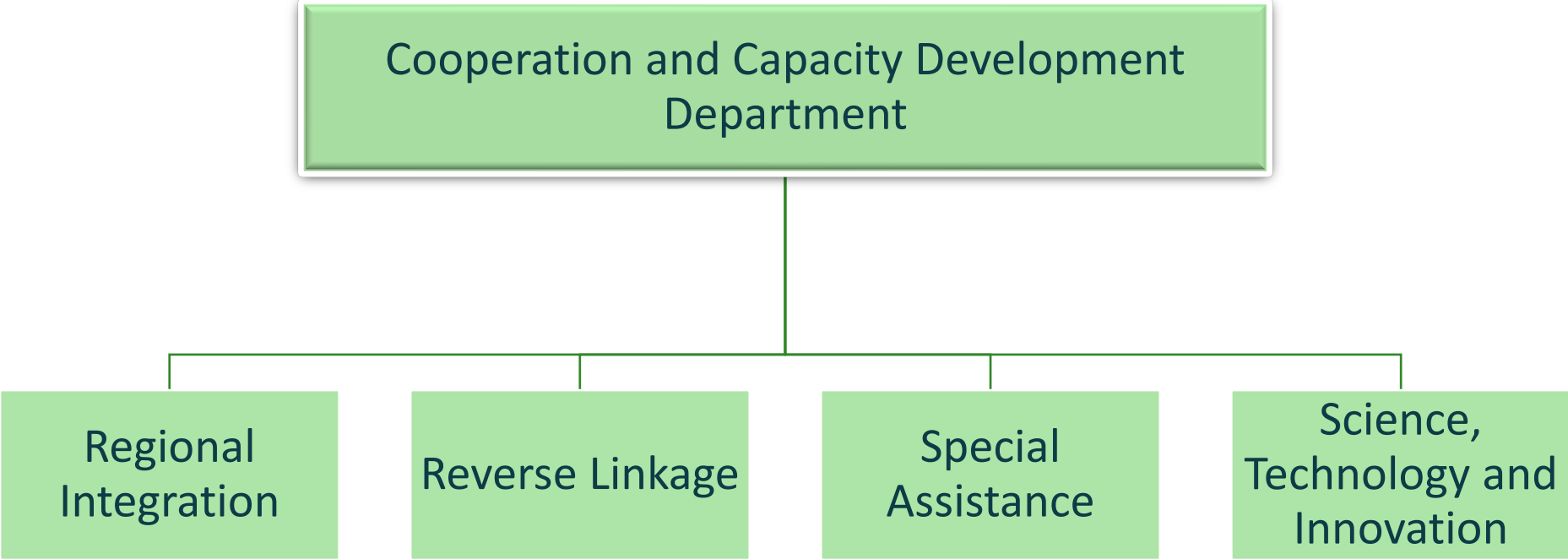
- Multilateral Development Bank
- 57 member countries across 4 continents
- 12 Regional Hubs and Center of Excellence

## Aiming at :

- Fostering socio-economic development,
- Promoting comprehensive human development,
- Promoting & Expanding the Islamic Financial Industry.



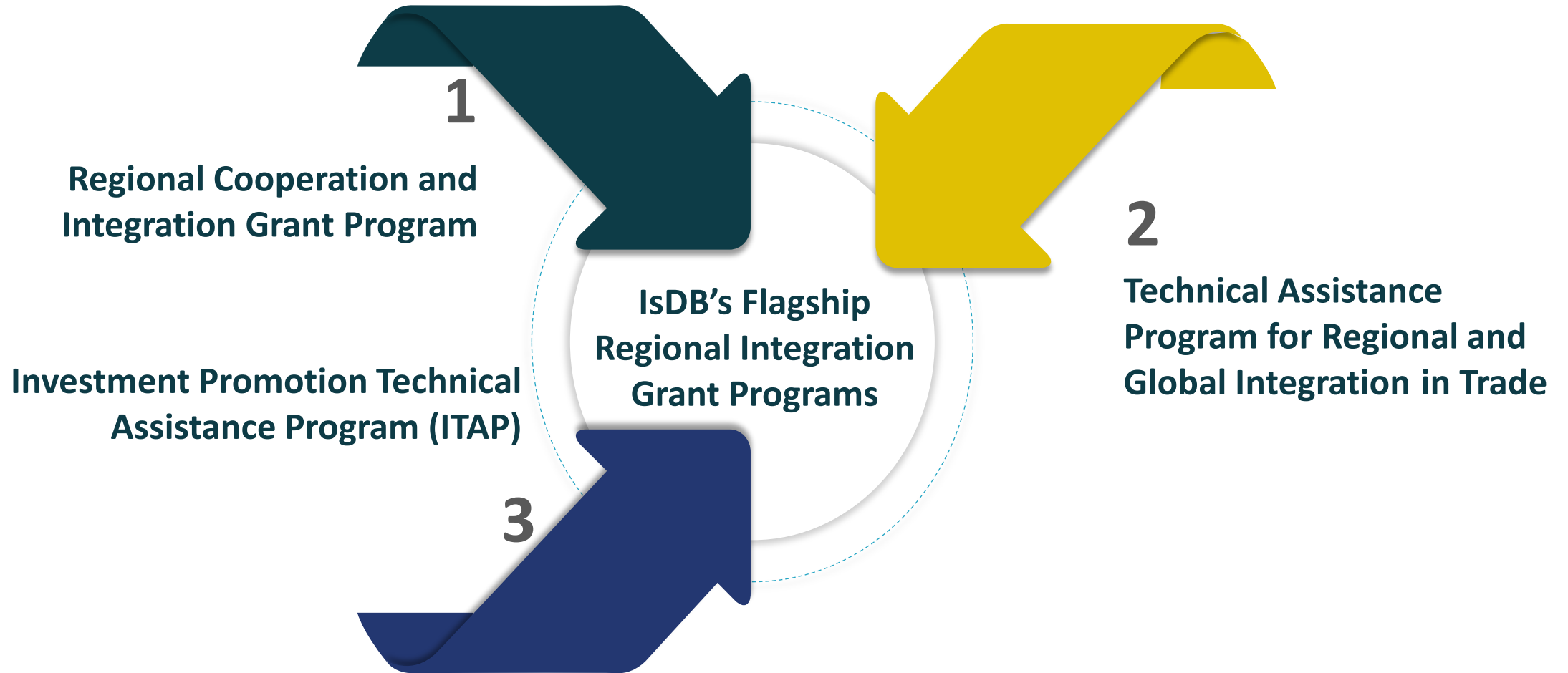
# Cooperation and Capacity Development Department





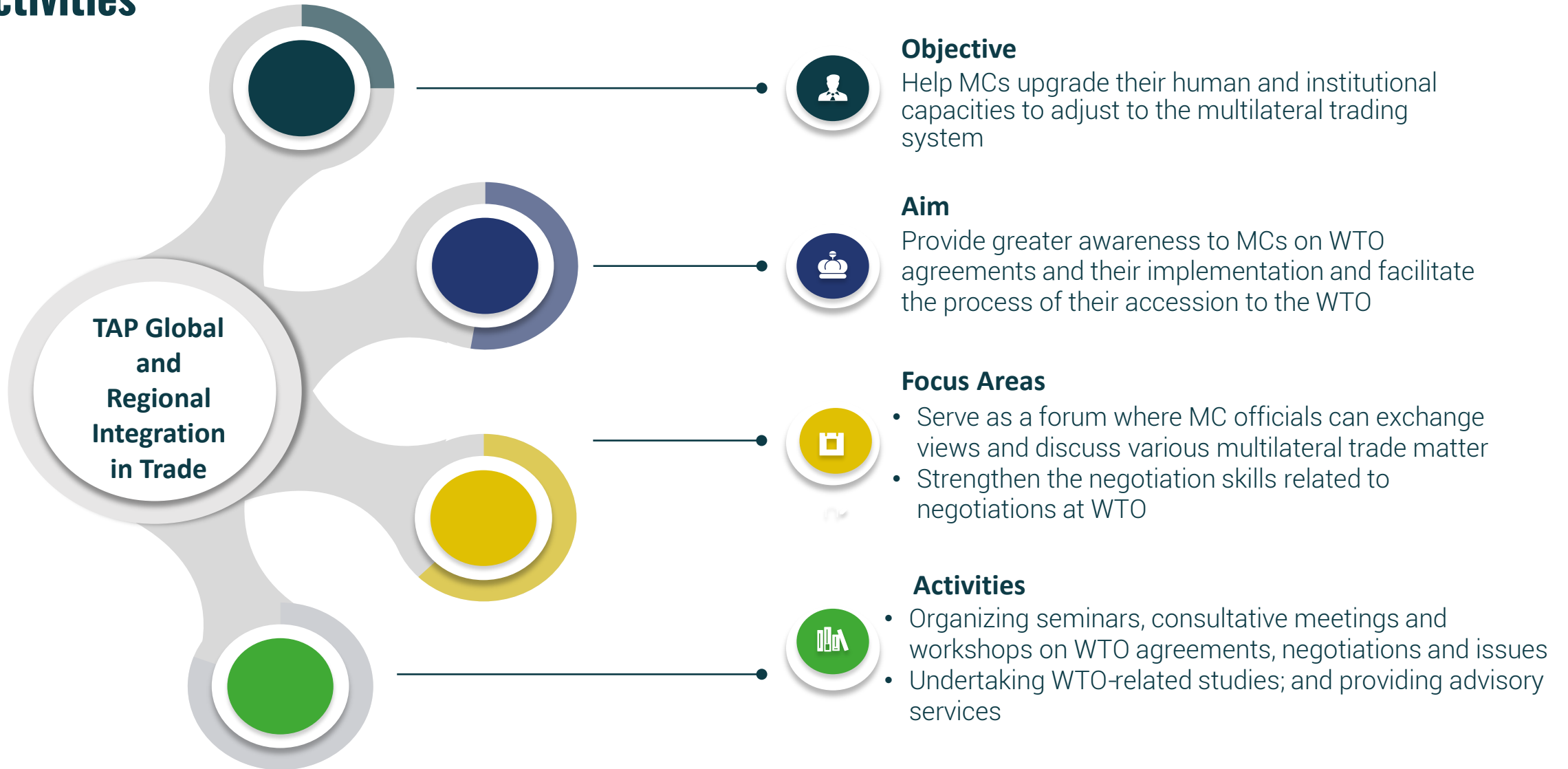
# Regional Cooperation and Integration (RCI) Policy

# Regional Integration Grant Programs





# Technical Assistance Program for Regional and Global Integration (TAP): Services and Activities



# ITAP: Objectives and Rationale

ITAP's main objective is

to offer **technical assistance and capacity building services** to IsDB member countries' *"investment promotion agencies"*

to support their efforts in attracting **domestic and foreign direct investment** to their respective countries

- Greater recognition of the role of the private sector and foreign direct investment in sustainable socio-economic development of a country
- The level of FDI flows in IsDB member countries
- The need for improving the investment climate and capacity to attract FDI by IsDB member countries
- Lack of investment promotion capacity
- The need for articulating competitive sectors and projects
- Lack of information sources and databases
- Perceptions of member countries among investors



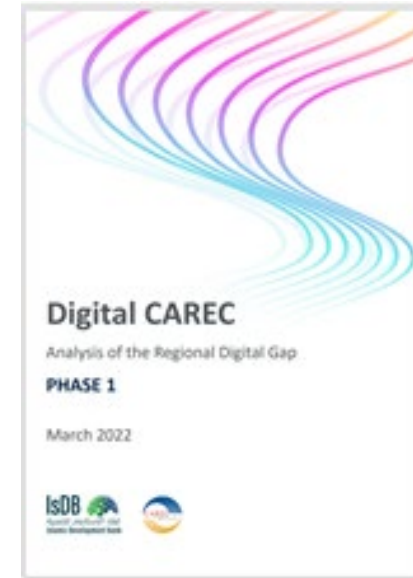
# Regional Cooperation and Integration Grant Program




## Goals

- Promoting Regional Cooperation;
- Enhancing intra-OIC Trade and connectivity;
- Facilitating cross-border movement of people, goods, services and capital between IsDB MCs.

## Focus Areas

- Multi-year projects with resource mobilization to co-finance regional initiatives;
- Capacity building to facilitate the connection of landlocked MCs to regional integration efforts targeting MCs officials;
- Regional connectivity and enhancing regional infrastructure networks.



	The IsDB geographic information system (GIS) of regional infrastructure networks launched in 2017.
	The commercialization study of the Kazakhstan, Turkmenistan, and Iran (KTI) railroad corridor launched in 2018.
	The commercialization study of the Trans-Saharan Road (TSR) corridor launched in 2019.





## New Regional Integration Initiatives

- New initiatives to enhance the economic integration of IsDB's Central Asian Member Countries among themselves and with other regions.
- Regional Initiative for the Development of the Sahel Region in collaboration with the United Nations Office of the Special Coordinator for Development in the Sahel, the Arab Bank for Economic Development in Africa, and the Arab Coordination Group.
- Best Practices in WTO Accessions for Arab Countries in collaboration with the Arab Monetary Fund and the World Trade Organization.
- Support to the Operationalization of the African Continental Free Trade Area.
- Support to IsDB's Sub-Saharan African Member Countries for their Accession to TIR/eTIR and CMR/eCMR in collaboration with ICDT and UNECE.

*Thank  
you*

