

EGRM Realignment Proposal

David MacDonald, EGRM Chair
Satinder Purewal, TAG Co-Chair



RESOURCE MANAGEMENT WEEK 2022

ENABLING SUSTAINABILITY PRINCIPLES IN RESOURCE



UNECE

The Proposal

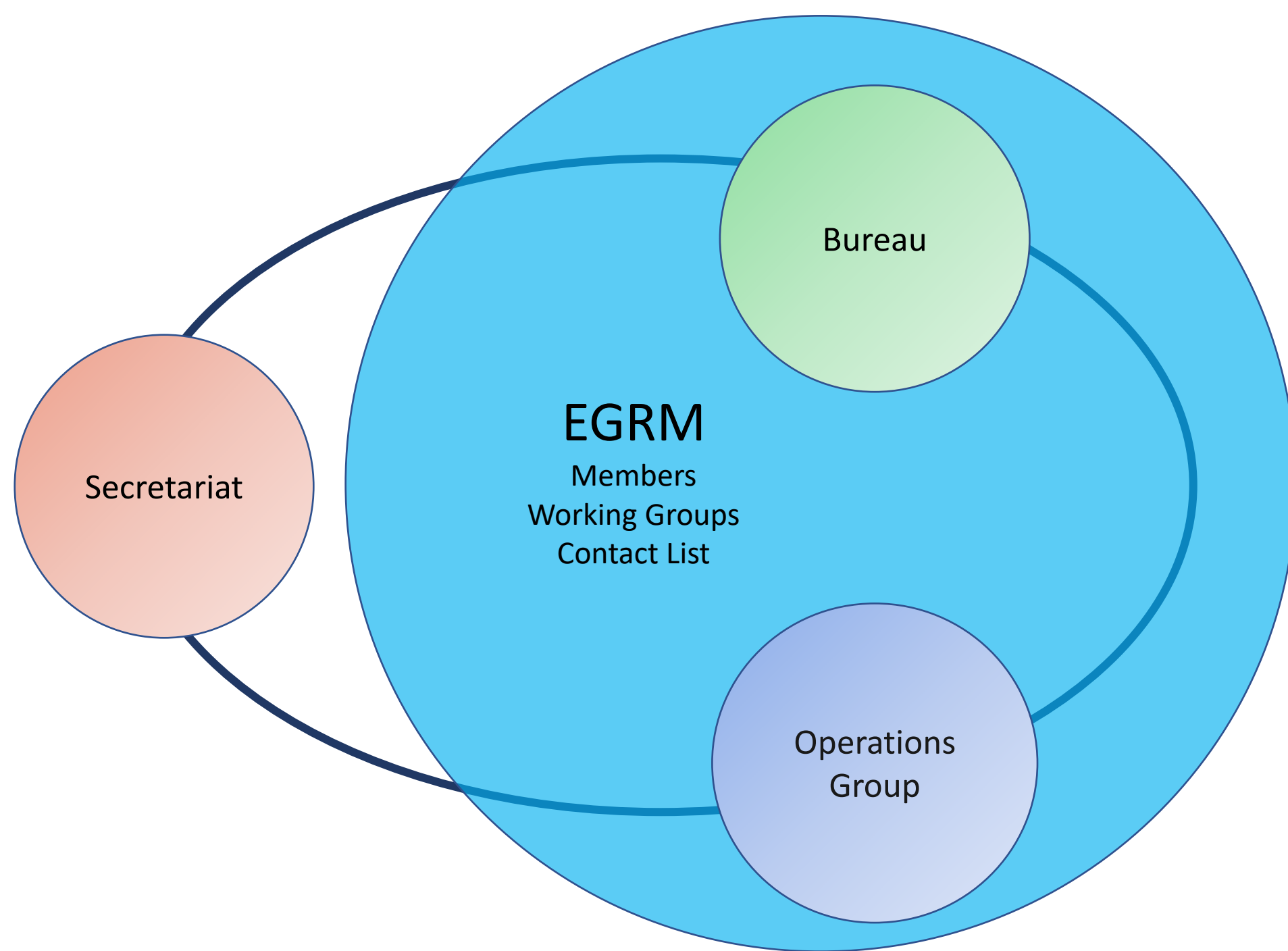


- EGRM is a UN expert advisory group on resource classification and management with allegiance to UN core principles and values. EGRM reports to UNECE Committee on Sustainable Energy
- **Strategy:** EGRM and Secretariat activities should be fully aligned to objectives of UN SDGs and May 2021 UN Policy Brief on Transforming Extractive Industries for Sustainable Development
- **EGRM structure and Bureau:** Have evolved into large bodies that reflect growing number of applications of UNFC and development of UNRMS and increasing global interest for implementation (as called for by ECOSOC on UNFC). 19+ subgroups of EGRM
- **Operations:** It is proposed to transform Technical Advisory Group (TAG) into Operations Group

The Proposal cont'd



- Proposed **Evolution of TAG**: objective to take responsibility for effective and efficient delivery of products, communication and technical review at the request of Bureau.
- Operational mandate, policy framework and key objectives framed, analysed and prioritised in 18 Recommendations of UN Extractives Policy Brief, May 2021, notably number 15 (implement UNFC/UNRMS) and 16 (Create or improve regional frameworks aligning extractive industries with SDGS). Task, within Terms of Reference as appropriate, to carry these out.
- Active cooperation with UNECE's sister Regional Commissions (ECA, ECLAC, ESCAP and ESCWA)
- **Secretariat**: Administrative leadership and operational support provided by full-time Sustainable Resource Management **Secretariat** appropriately resourced and empowered reflecting degree of priority, urgency and criticality with which SDG delivery process, in particular resource management and provision, is conducted. **Regular budget (RB) support, currently at less than minimum, needs to be enhanced to support expanded EGRM scope and provide technical support to other Regional Commissions, African Union, UN Working Group on Transforming Extractive Industries for SD, etc.**



Secretariat

EGRM

Members
Working Groups
Contact List

Bureau

Operations
Group

Bureau:

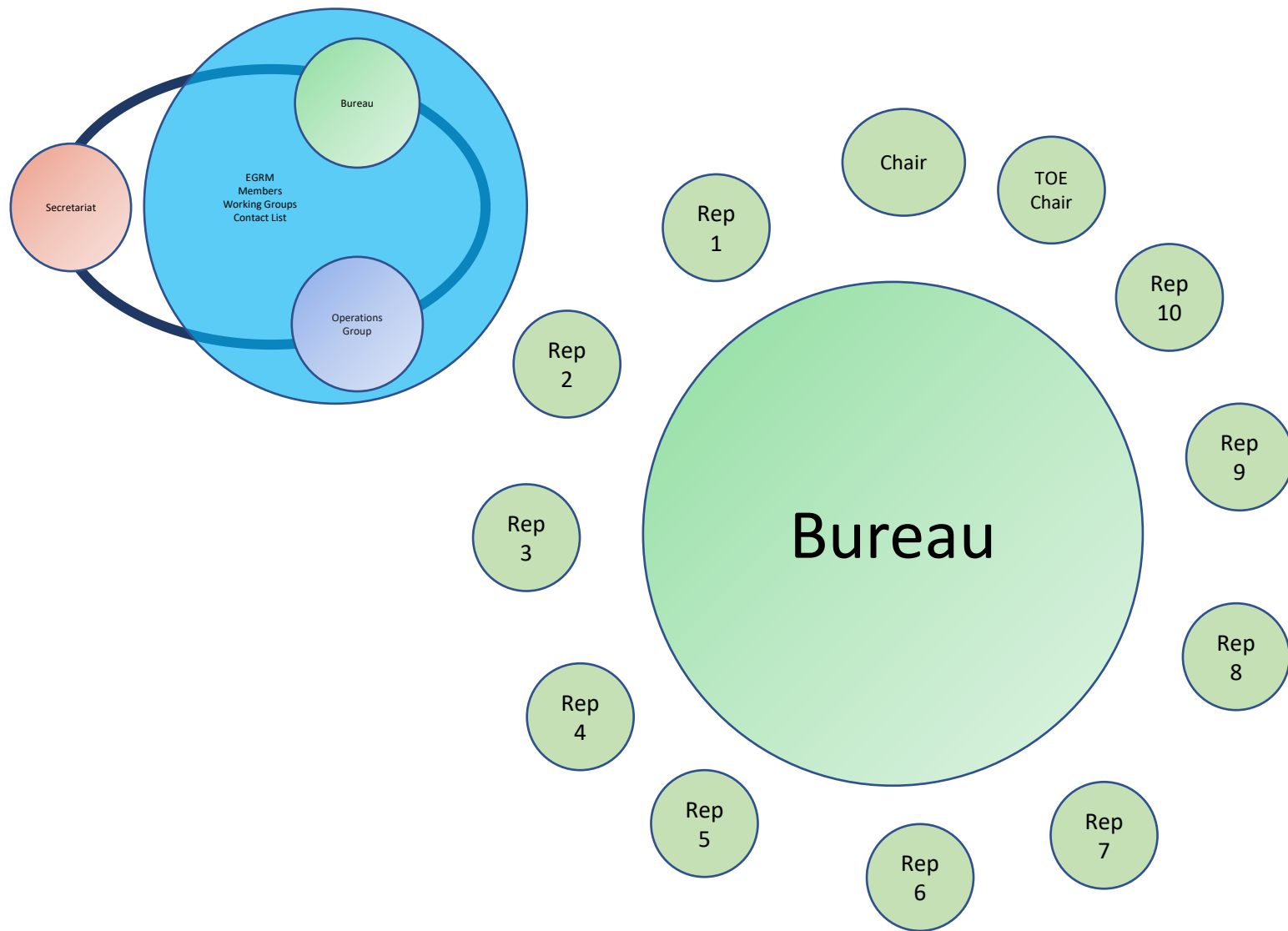
Will comprise representatives from UNECE member States, 8-10 members.

New Operations Group

Around 15 WGs, each with around 10-15 vetted WG members, 250 WG members.

EGRM (Contact list)

Participation in annual EGRM meetings, other events, contact through regular newsletters, 5,000+ members



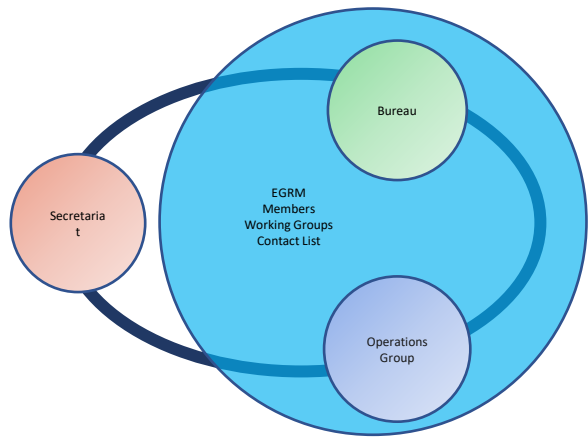
Bureau will comprise representatives of UNECE member States

The Bureau sets the strategic direction for EGRM activities and defines the terms of reference for all activities between sessions of EGRM

Operations Group delivers on Bureau proposals and advises Bureau

Operations Group Co-Chairs will be ex-officio members of Bureau

Working Group Chairs may be invited to Bureau meetings as needed



Stakeholders

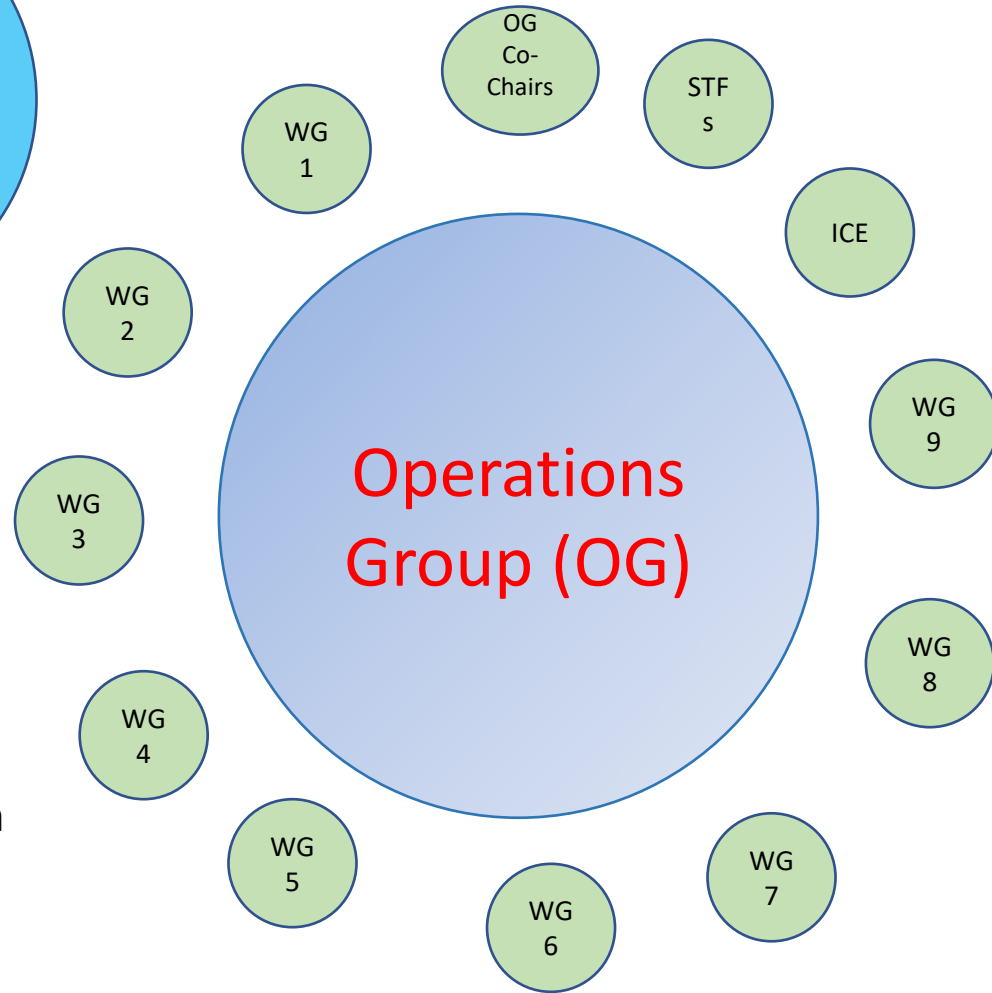
Governments
 Industry
 Financial Institutions
 Academia/NGOs

Special Task Forces (STFs)

Ad hoc groups formed from EGRM and OG to carry out agreed Projects.

ICE-SRMs

Network of ICES



OG:

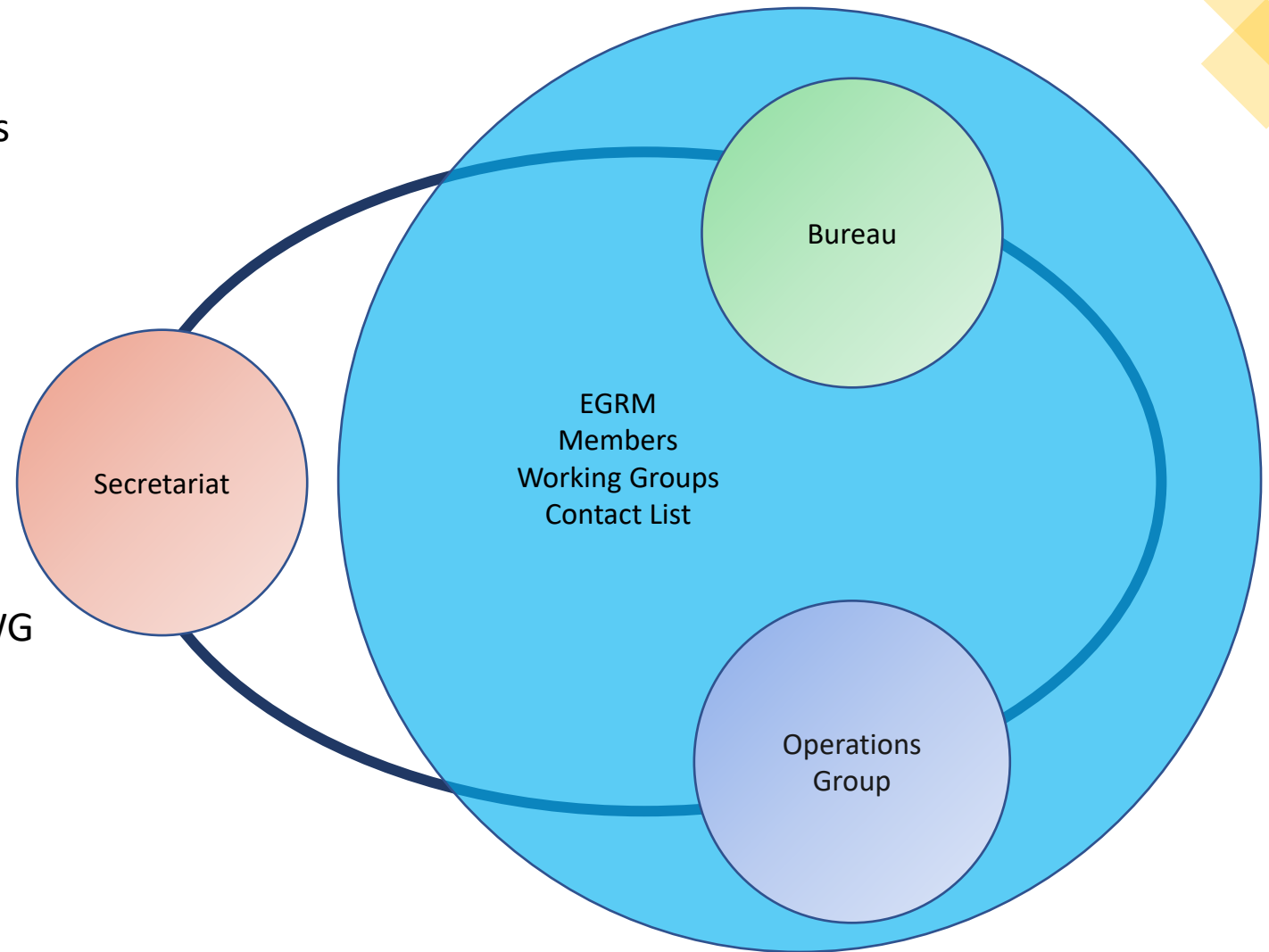
Comprises WG Chairs, STFs, ICE-SRM focal points

OG advises

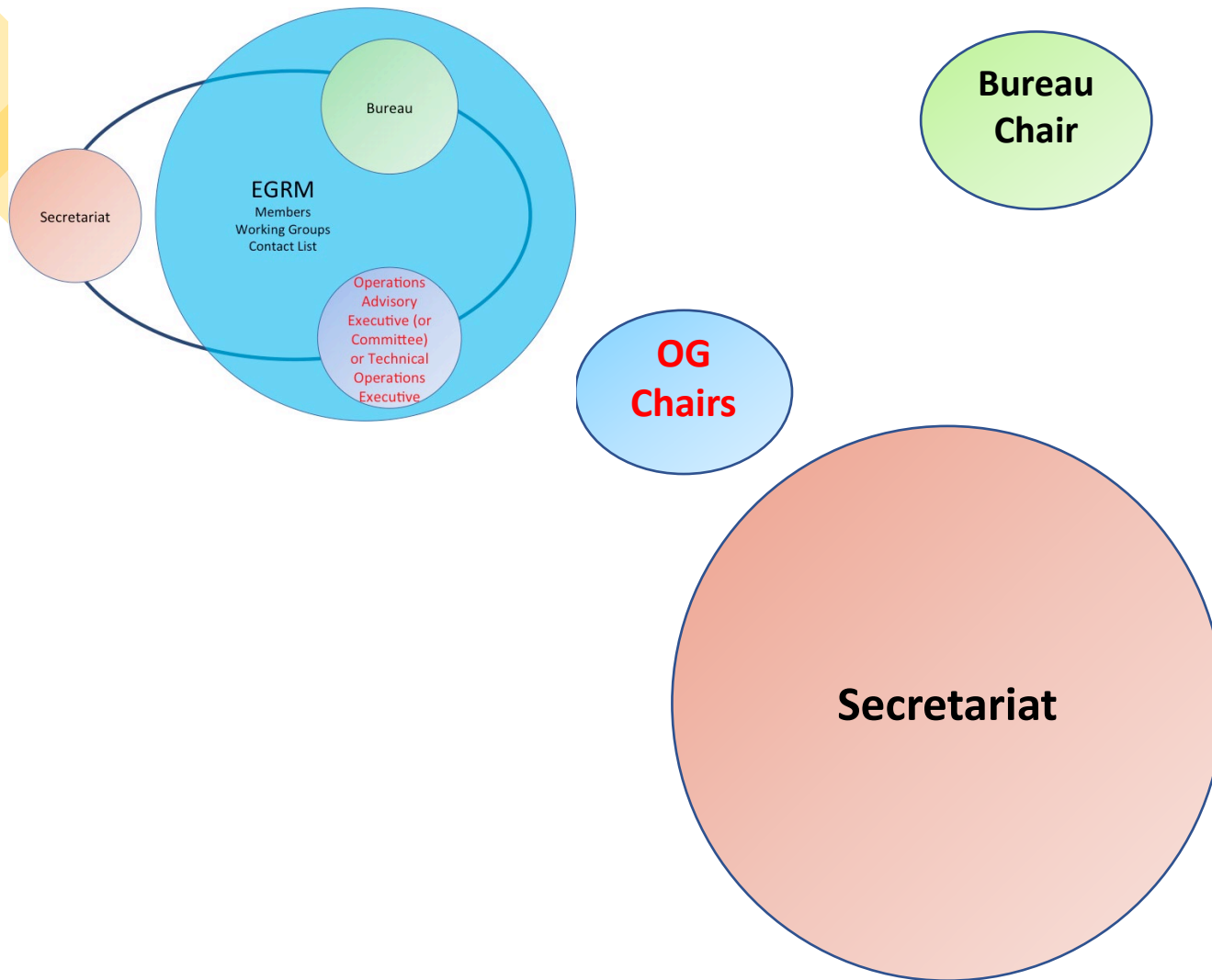
Bureau, Secretariat and EGRM on operations and delivers on Bureau proposals

Membership of OG

- Members of the **Operations Group** will comprise the chairs of the Working Groups
- **OG** will be co-chaired by three representatives of stakeholder groups on a rotating basis
- **OG** will comprise chairs of WGs, including:
 - Anthropogenic Resources WG
 - Renewable Energy WG *including sub-groups on bioenergy, geothermal, hydro, wind, marine-hydro*
 - Communications WG
 - Women in Resource Management WG
 - Social & Environmental Considerations WG
 - SDGs Delivery WG
 - Commercial Applications WG
 - Nuclear Fuels WG
 - Injection Projects WG
 - Minerals WG
 - Petroleum WG
 - Groundwater Resources WG



Secretariat



- UNECE Secretariat currently receives only bare minimum regular budget support.
- 50% of a P staff time allocated.
- Secretariat has to support expanded EGRM and also offer technical support to other Regional Economic Commissions (RECs), African Union.
- More full-time staff and contractors are required.
- Executes technical and organizational work on a continuous basis.
- Product creation, analyses, training materials, data science support. Project administration, reporting.
- Organizational structure TBD.

Concrete proposal to be submitted to EGRM-14 (24-28 April 2023) subject to discussions at EGRM-13

Thank you!

David MacDonald
EGRM Chair
Satinder Purewal
TAG Co-Chair



RESOURCE MANAGEMENT WEEK 2022
ENABLING SUSTAINABILITY PRINCIPLES IN RESOURCE



UNECE