



Opportunities for a Regional Actions Plan For Sustainable Urban and Peri-urban Forestry



Dr Cecil C. Konijnendijk



Trees in Cities
Challenge



Background

- Need for further actions that promote and develop sustainable urban and peri-urban forestry in the region
- Addressing UNECE Regional, National, Subnational, and City levels
- Build on UNECE Policy Brief on SUPF
- Align with other UNECE and other relevant UN policies and action plans

ISGlobal — Ranking of Cities

Urban health study in 1,000 European cities

GREEN SPACE



More than **60%** of people in European cities lives in areas with insufficient green space



Increasing overall greenness could prevent **up to almost 43,000 deaths** in European cities every year.

ECONOMICS OF URBAN FORESTRY IN THE UNITED STATES



ECONOMIC FOOTPRINT

Trees have a tremendous impact on local economies, from job creation to sales and services.



EMPLOYMENT

More than **500,000** people are employed as a result of urban forestry activities.



INVESTMENT

Communities enrolled in the Tree City USA® program invested an average of **\$7.37 per resident** in tree planting and care in 2017, compared to just **\$3.00 per resident** in nonparticipating communities.



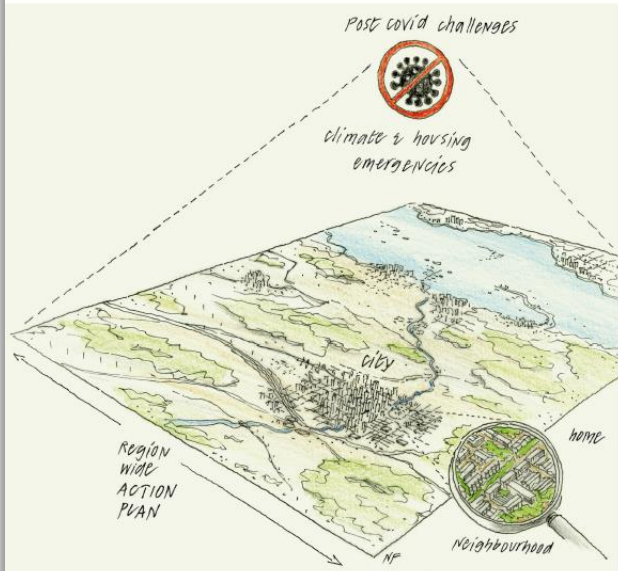
ECONOMY

The urban forestry sector has an annual sales and employment footprint worth **\$64 billion**.

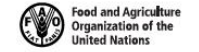
UNECE

Place and life in the ECE A Regional Action Plan 2030

Tackling challenges from the COVID-19 pandemic, climate and housing emergencies in region, city, neighbourhood and homes



National Policy Guiding Principles for Forest Landscape Restoration



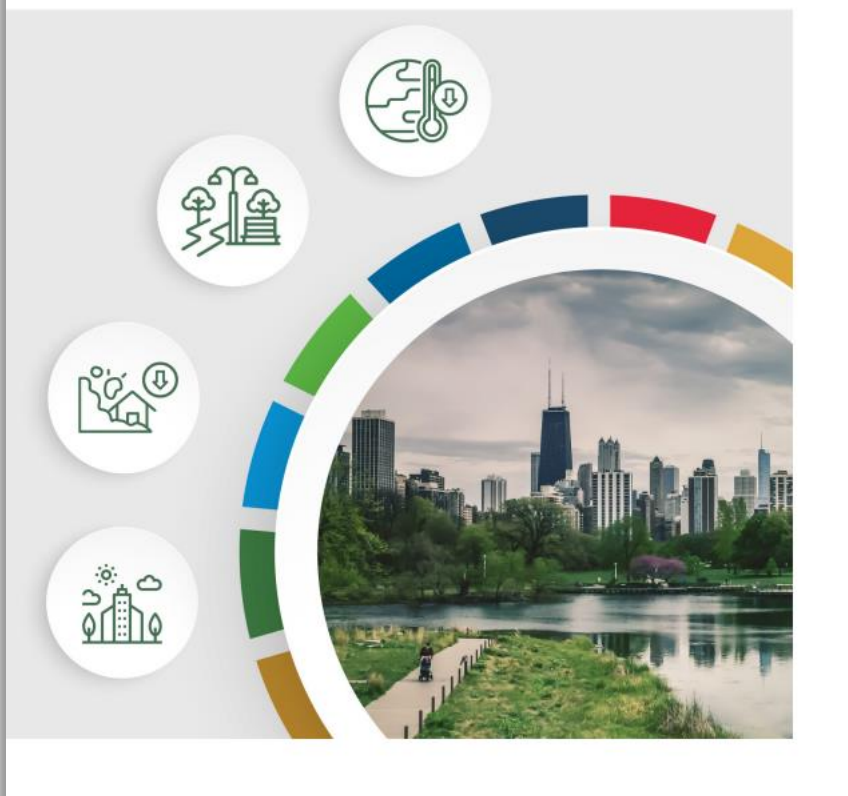
UNECE

Who owns our forests? Forest ownership in the ECE region



UNITED NATIONS ECONOMIC COMMISSION FOR EUROPE

Sustainable Urban and Peri-urban Forestry An Integrative and Inclusive Nature-Based Solution for Green Recovery and Sustainable, Healthy and Resilient Cities Policy Brief



Key Messages

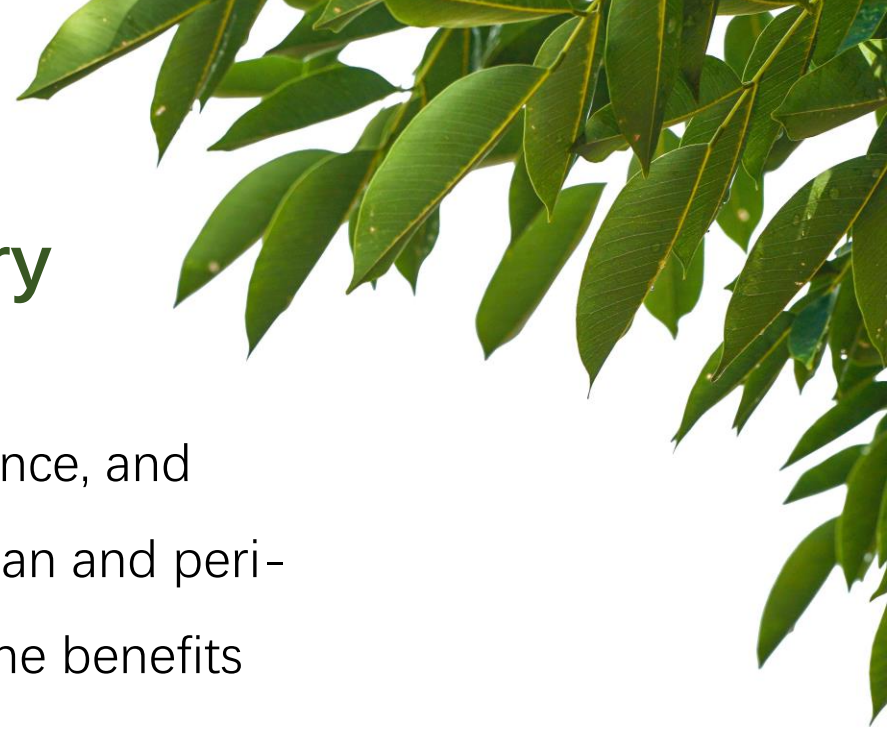
In an urbanizing world

- The contributions of forests, trees, and associated vegetation to climate change mitigation and adaptation, disaster risk reduction, public health and well-being, biodiversity conservation, and sustainable economic recovery and growth are increasingly important.
- Sustainable urban and peri-urban forestry (SUPF) is an integrative and strategic nature-based solution that can help develop green, sustainable, and resilient cities.
- SUPF goes well beyond the expansion of the urban tree cover via afforestation and tree planting; it requires long-term management of urban forest ecosystems to ensure that urban trees and forests are cared for and mature, and that the benefits they provide are optimized over time.
- Strong planning, through dedicated SUPF master plans or similar planning documents, can provide a critical foundation for sustainable long-term management and direction for implementation.
- Integrating SUPF programmes into city planning can significantly enhance their effective implementation.
- Strong assessment and monitoring of the progress and success of SUPF plans and programmes can play a critical role to help inform adaptive management.
- Strong collaboration, partnerships, and stewardship, including close collaboration with local communities can enhance SUPF outcomes.
- Peer learning and networking, public education, and awareness, benchmarking, and the exchange of good practices can all help to build partnerships for SUPF.
- National and sub-national authorities can support and enable local SUPF programmes through policy and legal frameworks; provision of data, information, and knowledge; and support for planning, implementation, and monitoring. This may be linked to international commitments, guidelines, knowledge, and funding.



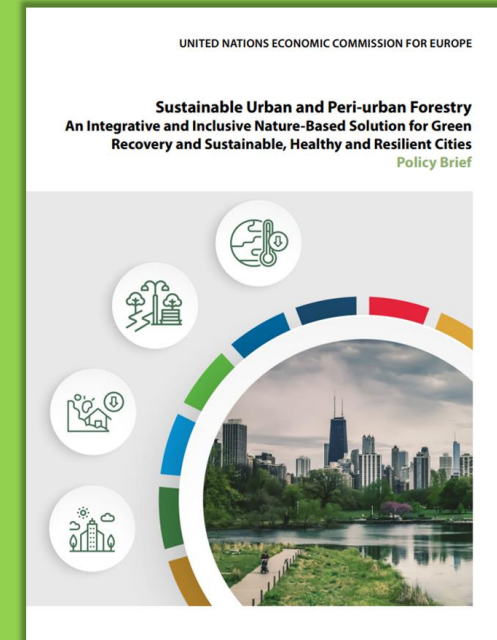
Sustainable Urban and Peri-urban Forestry

- Sustainable urban and peri-urban forestry (SUPF) is the art, science, and practice of planning, designing, establishing, and managing urban and peri-urban forests to meet current needs and desires of society for the benefits these provide, without compromising the availability of these for future generations.
- SUPF needs to be Integrative, Strategic, Interdisciplinary, Inclusive, and Urban



A Call for Action

- **Implement global policies and goals** locally through SUPF
- **Coordinate SUPF** with other sectors and policies
- Involve national and regional authorities and policy-makers more in the **strengthening of SUPF governance and collaboration**
- Learn from **good examples and good practice**
- Foster a culture of regional and **cross-boundary collaboration**
- **Monitor and benchmark** across the region
- Promote the use of **international standards and guidelines**
- Promote **greater awareness** of the importance of SUPF



Vision

Urban and peri-urban forests are developed to **deliver multiple essential ecosystem services** that benefit local urban communities and **contribute to** national **policy objectives**, the SDGs, and global goals for climate action, disaster risk reduction, biodiversity conservation, landscape restoration, and sustainable cities.

Urban and peri-urban forests are **managed sustainably**, guided by national, subnational, and city policies, regulations, strategies, and plans that are implemented with **adequate resources** over time.

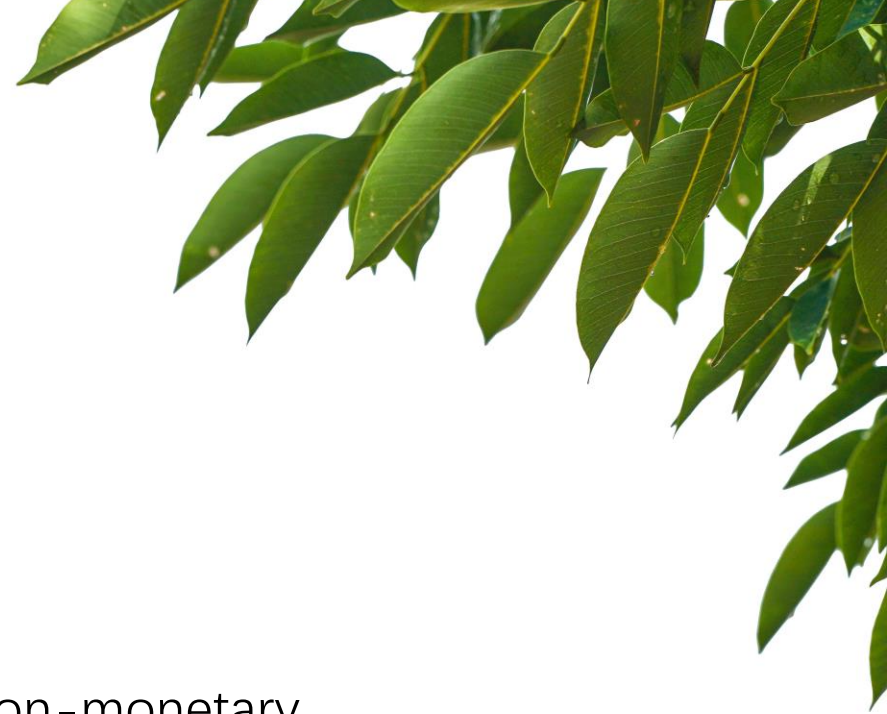
Goals

- A. Raise awareness of the benefits of SUPF and need for sustainable resource management.
- B. Strengthen governance, policies, regulatory frameworks, and financing for SUPF at the national, subnational, and city level.
- C. Provide guidance and enhance the development and implementation of masterplans, management plans, and good practices in SUPF.
- D. Strengthen technical and human capacities for the implementation of SUPF programs.
- E. Build inclusive partnerships and participatory approaches for developing and delivering SUPF programs and initiatives.

A. Awareness raising

Targets:

- A.1. Awareness of the multiple and essential benefits of SUPF.
- A.2. The benefits of urban forests are known in monetary and non-monetary terms.
- A.3. The need for sustainable management of urban and peri-urban forests is widely known.



B. Governance and regulatory frameworks

Targets:

- B.1. Governance and policies and programs are in place for SUPF with overall vision and clear aims and objectives, and a longer-term perspective.
- B.2. Regulatory frameworks for sustainable urban and peri-urban forestry.
- B.3. Clear institutional mandates and coordination mechanisms for urban forestry.
- B.4. Sustainable funding programs for SUPF.

C. Planning and management

Targets:

- C.1. Good understanding of the urban forest resource.
- C.2. Strategic approaches drive the management of urban forests.
- C.3. Widespread use of good practices and suitable technologies in urban forestry.



D. Strengthen technical and human capacities

Targets:

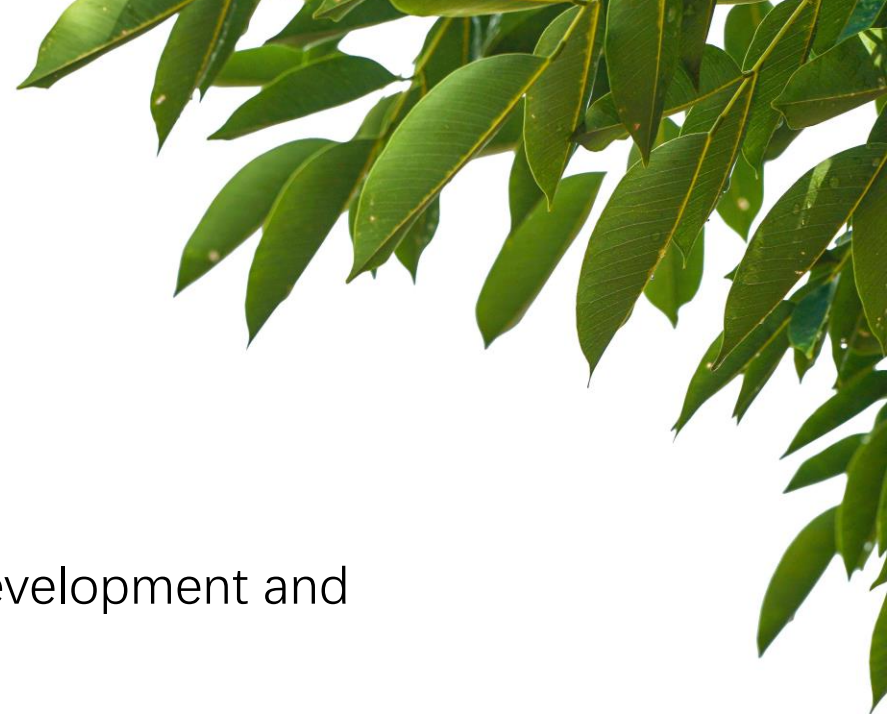
- D.1. Dedicated urban forestry training and education in place in most UNECE countries.
- D.2. Strong networks for SUPF present at the regional and national level promote knowledge sharing and collaboration.



E. Inclusive partnerships and participatory approaches

Targets:

- E.1. Cross-sectoral and multistakeholder partnerships for the development and implementation of urban forestry programs are widespread.
- E.2. Inclusive and participatory approaches are common in urban forestry.





Thank you!

Be part of the next steps



**Trees in Cities
Challenge**