

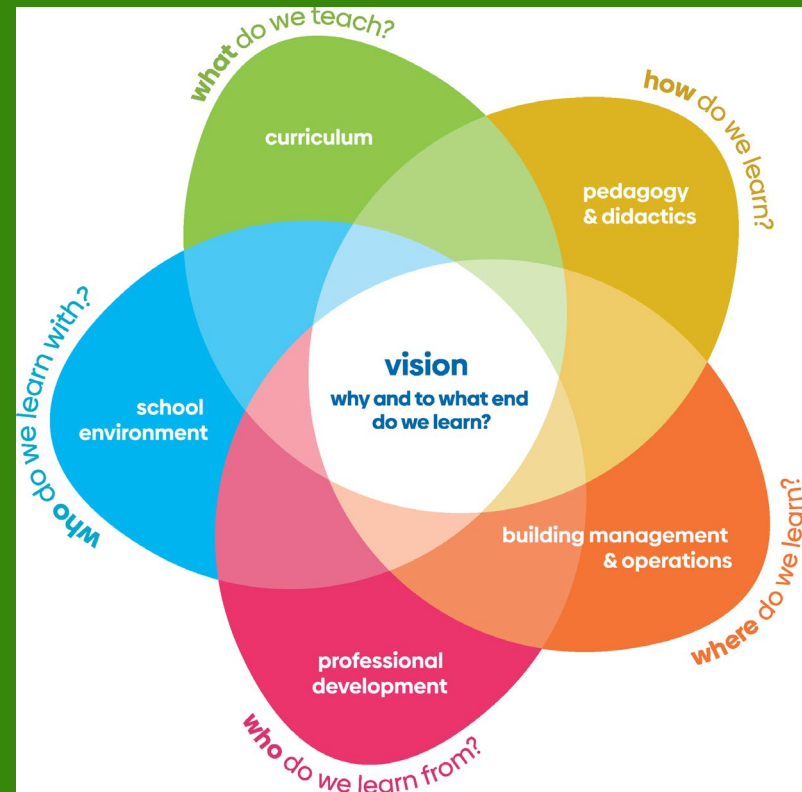


Ministerie van Landbouw,  
Natuur en Voedselkwaliteit

# Whole School Approach

Whole Institution Approach

## Dutch perspective



drs. Roel van Raaij,  
Ministry of Agriculture, Nature and Food Quality  
The Netherlands



Bottom line:  
Learning to live within the boundaries of system Earth.





# whole school approach

to Sustainable Development



The WSA is represented in the image of a flower. The petals of this flower represent the various educational processes that affect learning. These are:

- curriculum,
- pedagogy and didactics,
- professional development,
- building management and operations
- school environment.

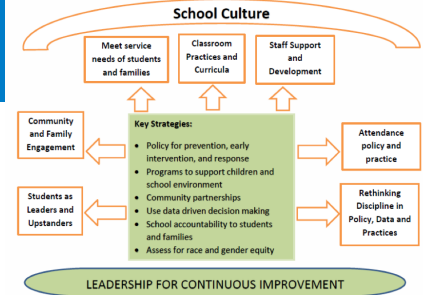
These processes or domains connect at the heart of the flower, representing **the school's vision on ESD**

The WSA focusses on realization of the UN Sustainable Development Goals (SDGs).





# WHOLE SCHOOL APPROACH



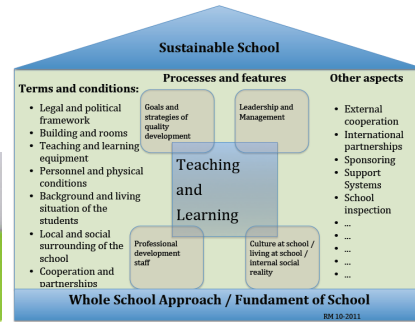
# WSA is not completely new. Standing on the shoulders of .....

**SCHOOLS FOR SUSTAINABILITY**  
a Resource Toolkit for Teacher Training

WWW.ESD-EXPERT.NET

Concept paper

The concept of the Whole School Approach – a platform for school development with focus on sustainable development  
by Reiner Mathar (March 2013)



**Australian Government**  
Department of the Environment and Heritage

**Whole-school approaches to sustainability:**  
An international review of whole-school sustainability programs

A report prepared by the Australian Research Institute in Education for Sustainability (ARIES) for the Department of the Environment and Heritage, Australian Government.

**MACQUARIE UNIVERSITY - SYDNEY**

**The EkoSkola Programme**  
A whole school approach

**Sustainability is not just something to learn, it's something to live!**

- STUDENTS SHOULD LEARN ABOUT SUSTAINABLE DEVELOPMENT AND GLOBAL CITIZENSHIP TO HELP THEM UNDERSTAND THE WORLD THEY LIVE IN
- SCHOOL GARDEN PROGRAMMES CAN TEACH HEALTHY EATING AND HELP BUILD AN EMOTIONAL CONNECTION WITH THE NATURAL WORLD
- EDUCATION IS THE BEST TOOL FOR CLIMATE CHANGE AWARENESS
- SCHOOLS SHOULD BUILD RELATIONSHIPS AND ENGAGE WITH COMMUNITY ISSUES
- STUDENTS, PARENTS, TEACHERS, PRINCIPALS, SCHOOL MANAGEMENT AND THE COMMUNITY SHOULD BE INVOLVED IN SCHOOL DECISIONS.
- THE WHOLE SCHOOL APPROACH TO SUSTAINABILITY BRINGS TOGETHER WHAT IS TAUGHT, HOW ITS TAUGHT, EXTRACURRICULAR ACTIVITIES, TEACHER TRAINING, DECISION MAKING PROCESSES, THE PHYSICAL BUILDINGS, THE ENVIRONMENT, AND THE WIDER COMMUNITY.
- SCHOOL BUILDINGS SHOULD BE SAFE AND SUSTAINABLE, CONSERVING WATER AND ENERGY AND REDUCING WASTE
- THE WHOLE SCHOOL APPROACH ADDRESSES THE NEEDS OF ALL LEARNERS



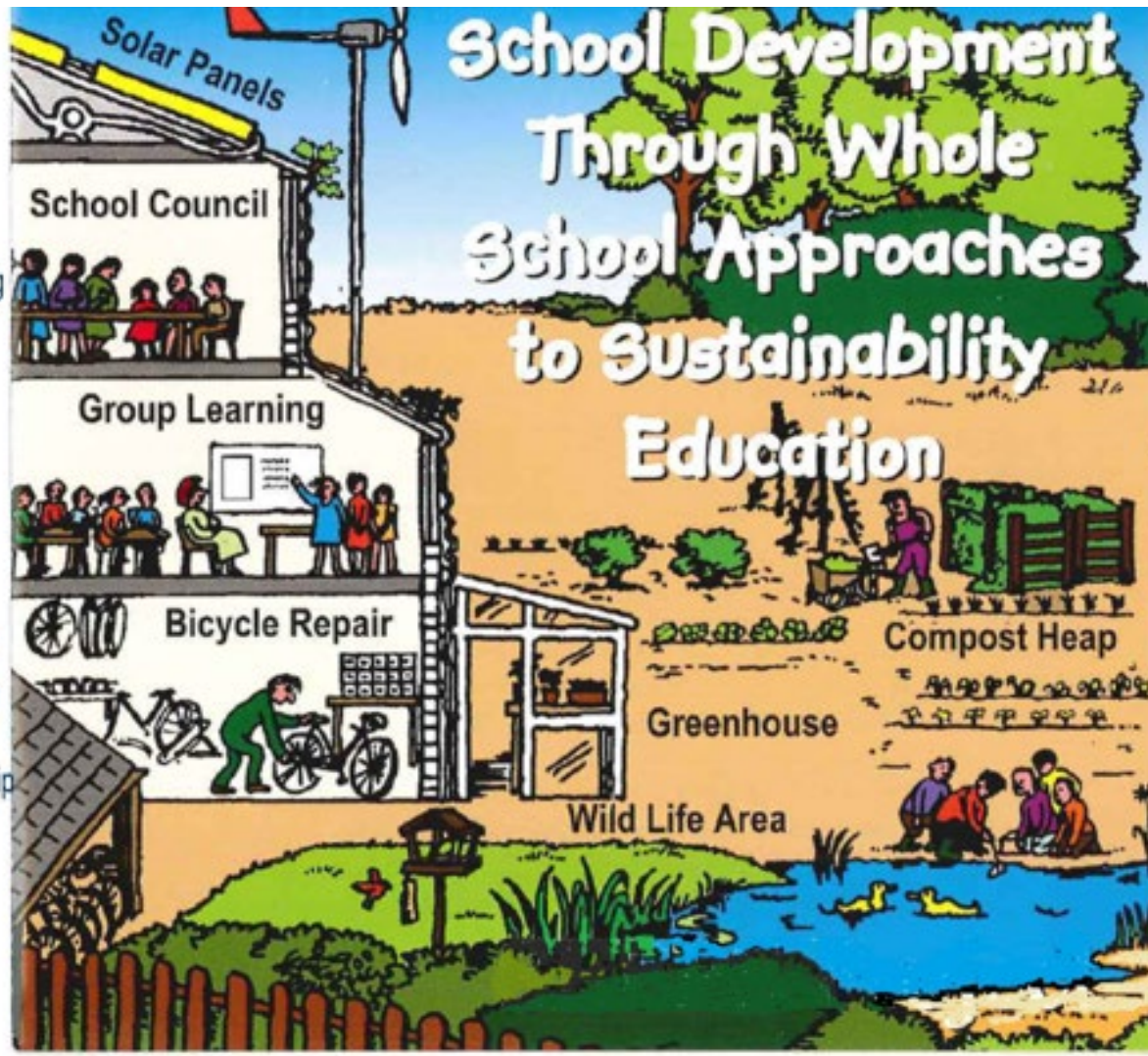
Environmental management

Participatory decision-making

Innovative teaching and learning

Vocational and applied learning

Entrepreneurship



School & community gardening

Backyard biodiversity



## The essential elements of WSA:

Why, to what end do we learn ?

Vision

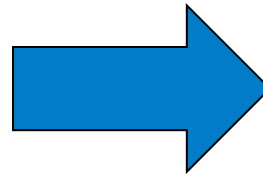
What do we teach ?

Curricula

How do we learn ?

Pedagogy & didactics

Who do we learn from?



Professional development  
Teacher Competences

Where do we learn?

Building & operations

Who do we learn with?

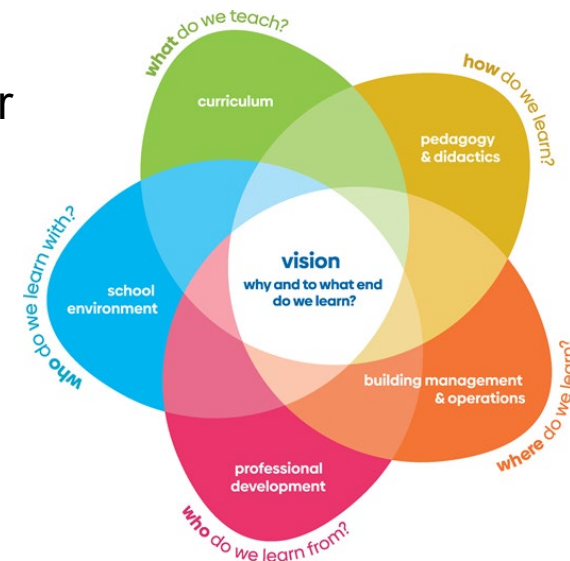
School environment



# How does the WSA work ?

Each school can give shape to the WSA in its own way!

The framework offers questions to start thinking and acting sustainably according to the ambition of the school: whether this is in making the canteen more sustainable, building a network of sustainable leaders in the region or embedding the SDGs in the curriculum. The WSA gives space to work on each part, without losing sight of the whole.



In this framework, we discuss the six learning processes that influence education as a set of questions that can initiate the conversation among all stakeholders. First step: developing a coherent school vision.





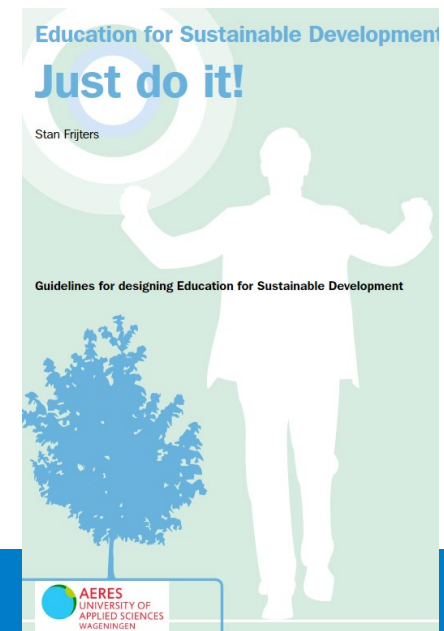
## Example of questions raised: professional development

Questions to discuss with each other

- What knowledge, skills and talents for ESD do we already have?
- How can we strengthen each other in our understanding of sustainable development?
- Are we up to date with sustainable developments in our fields/subjects?
- How do we as a team discuss topical issues related to the SDGs and their impact on our education?
- How do we structurally organize the time as a team
- to discuss sustainable development and ESD?

### Keywords

Individual and collective reflection,  
Further training and education → → → →  
Inspiring and competent team, HRM  
Keeping ESD on the agenda



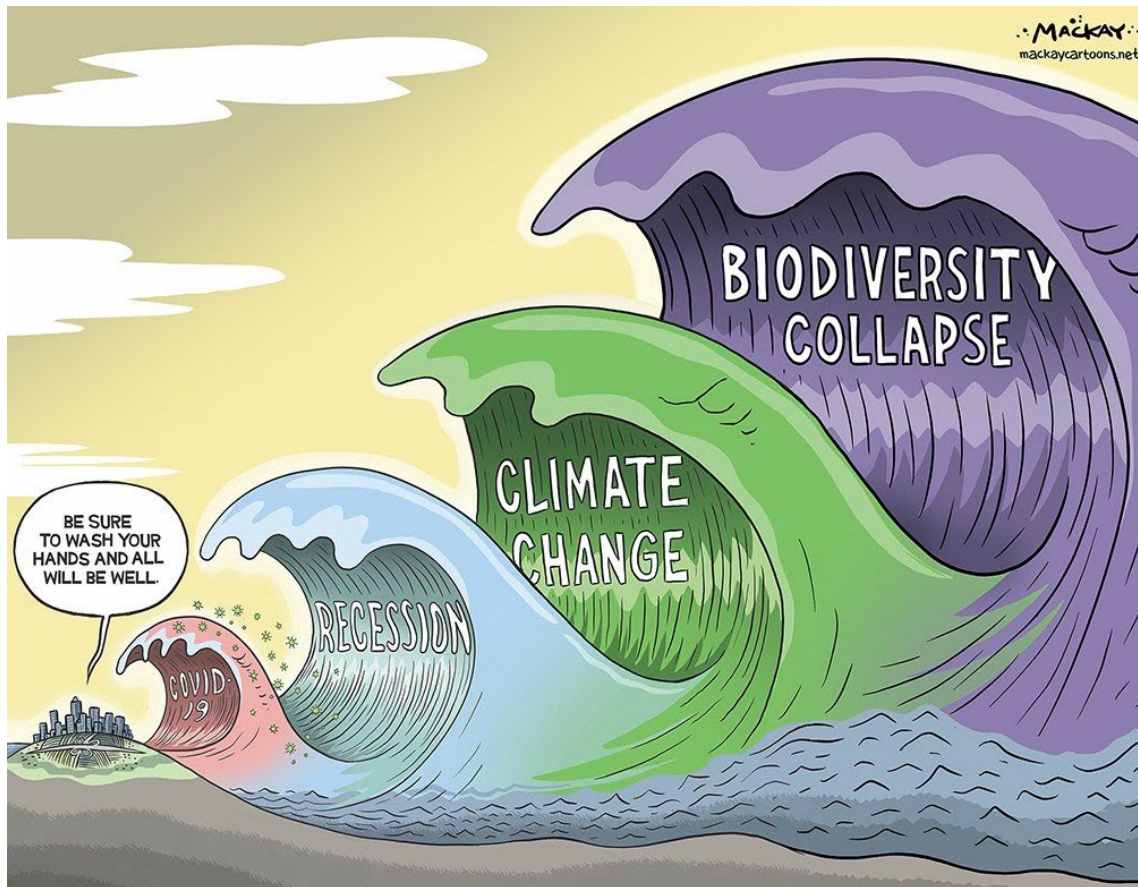


We are the students of today  
attending the schools of yesterday  
being taught by the teachers of the past-  
with methods from the Middle Ages  
to solve the problems of the future!





# Urgency is needed and asked for!





All information of WSA conference is available ONLINE

The conference report is online available on:

[www.sme.nl/wsa-conference2022](http://www.sme.nl/wsa-conference2022)

With links to a video of all presentations and all Sheets/ Powerpoints + documentation

Research report on 'Practices' in different countries:

<https://lnkd.in/eMVQYMzY>

The WSA model is also available in English and Dutch:

<https://wholeschoolapproach.lerenvoormorgen.org/nl/>



## What did we do already

- ❖ Website: <https://wholeschoolapproach.lerenvoormorgen.org/nl/>
- ❖ Study of Good Practices : <https://lnkd.in/eMVQYMzY>
- ❖ International Conference 28-20 March 2022
- ❖ Website with more examples
- ❖ Scientific book (Whole School Approaches to Sustainability – Principles, Practices and Prospects; Springer; summer 2022)

## What is to be done ?

- ❖ No more Frameworks, implementation !
- ❖ Expert/study Group UNECE/UNESCO/EU
- ❖ Tool-boxe(s) for implementation
- ❖ Training Modules for teachers/schoolboards/ staff
- ❖ Indicators and M&E of success.





Learn, connect and get inspired!

*"you are never too young to lead and never too old to learn" -*

Kofi Annan





Thank you for your attention.

