

## Practical Information

# ToS on Monitoring Sustainable Forest Management, 28 September 2022 and Damage and Disturbance Symposium 29-30 September 2022 Vienna, Austria

### 1. Venue

The event will take place at the University of Natural Resources and Life Sciences (BOKU).

Address: Exnerhaus, Peter-Jordan-Straße 70, 1190 Vienna  
Meeting room: EH 02  
Meeting hours: ToS: 28.09.2022, 09:30-17:00  
 Symposium: 29.09.2022, 10:00-12:00, excursion in the afternoon  
 Symposium: 30.09.2022, 9:00-16:00

### 2. Logistics

#### *Travel to/from Vienna*

We are kindly asking our participants to make their own travel arrangements to/from Vienna.

In case you travel by car we kindly ask you to plan your route on your own, e.g. via [Google maps](#).

If you travel by plane you will arrive at Vienna International Airport. From Vienna airport there are several options to proceed to the venue/hotels:

#### By Taxi

Arriving at the airport you will find an array of taxis at your disposal. You can hire them directly after check-out at the exit. Prices belong to the travel distance but approximately 60 € to BOKU. Various companies offer pre-bookings (via telephone/e-mail or **online** – just click “ctrl + the link” in the table below) at fix rates (for one-way / cab -> i.e. you may fill the cab and share costs). **FFP2 masks might still be obligatory:**

Company	Phone
<a href="#">Airport Driver (50 €)</a>	+43-1-22822
<a href="#">ATS Airport Transfer Service (44 €)</a>	+43-1-7007-359 10
<a href="#">Vienna Airporttaxi (44 €)</a>	+43-1-480 37 37
<a href="#">Taxi 40100 (36 €)</a>	+43-1-40100

More information is available at

<http://viennaairport.com/jart/prj3/va/main.jart?rel=en&content-id=1249344074251&reserve-mode=active>

### By City Airport Train

Additionally, you can go by CAT (City Airport Train) and continue by metro or taxi. The CAT takes you in 16 minutes nonstop to the city centre (one-way € 11, return € 19). You can directly book in advance via <https://www.cityairporttrain.com/en/home> or get a ticket at the airport (2 € more).

If you choose to go by CAT you will need to take different public modes of transportation, as described below. The easiest way to reach BOKU University from the final station (i.e. Landstrasse – Wien Mitte) is as follows:

- Take the metro **U 4** (direction Heiligenstadt) and go to *Heiligenstadt*
- Continue by bus **10 A** (direction Niederhofstrasse) until bus stop *Dänenstrasse*.

Buses depart directly in front of the main entrance / exit. Tickets are available on terminals within the station (€ 2,60). These tickets can be used for any single trip within Vienna – you may change lines, but you may not interrupt your journey (and please don't forget to stamp them!).

### Please check for individual opening hours:

CAT	05:36 to 23:06 (daily)
Metro	05:00 to 24:00 (Mo – Fr); 24 hours (Sa + Su)

### Other Bus Lines / trains

Several busses depart from the airport as well and connect Vienna Airport with the main Vienna transport hubs. Lines and timetables are available [online](#).

The same is true for additional train connections like the suburban railway and long-distance trains. Most of them operate via the new Vienna Central Station. Please have a look [here](#) or check more detailed timetables at [ÖBB](#).

## 3. Transportation in Vienna

Vienna is well covered with public means of transportation (i.e. metro, tram, bus). Several ticket options exist (e.g. 1, 2 or 4 trip(s); 24, 48 and 72 hours). You can purchase them in the ticket offices at various metro stations (Mo – Fr, 6:30-18:30), online or at the [terminals](#) within the stations. For trams and busses you may buy them directly from the driver (the price is € 2,60). Tickets must be stamped in the blue ticket stampers before boarding. You will find them

- On board of trams and busses
- at the barriers before entering the underground railway



### **Important notices about Wienerlinien:**

- Please note that ticket controls are frequent and unpredictable. You should always have a ticket. In case you are caught without a ticket you are liable to pay a fine of € 130,-.
- You can use this [service site](#) to plan public Transportation routes in Vienna
- Timetables are [available online](#)
- **FFP2 masks are obligatory**

Alternatively you can also take a taxi. All taxis are metered – if one doesn't have a meter please do not ride in it. Prices belong to the travel distance. The starting price is around €4. **FFP2 masks are obligatory.** We recommend the following taxi companies:

<a href="http://www.taxi40100.at/">http://www.taxi40100.at/</a>	+43-1-40100
<a href="https://www.taxi40100.at/taxi40100/greentaxi/">https://www.taxi40100.at/taxi40100/greentaxi/</a>	+43-1-40100 (Hybrid or electric taxis)
<a href="http://www.taxi31300.at/">http://www.taxi31300.at/</a>	+43-1-31300

For other useful information on transportation, a list of taxi companies and respective numbers please check [this webpage](#).

#### 4. Accommodation

We are kindly asking our participants to make their own accommodation arrangements.

We have a new website at the [University homepage listing hotels](#) and also the way how you can reach the university main building (Gregor-Mendel-Straße 33). The venue is 3 minutes away in Exnerhaus, Peter-Jordan-Straße 70, 1190 Vienna).

The [website](#) is available in English and in German.

Due to data security reasons the prices are not visible and can only be seen if you go to the hotel website, the links are provided. You can ask for a special offer for BOKU guests, which they might have, at least outside high season. As September is high tourist season, early booking is recommended.

From the list above please find below a selection of hotels we would like to recommend. All of them are relatively close to the venue or easily reachable by public transportation.

**[Hotel Park Villa](#)** (Art Deco style, beautiful garden, nearest hotel to the venue, about 10 min walk, please see [the map](#))

##### **[Hotel Kaiser Franz Joseph](#)**

The venue of the event can be easily accessed from the hotel by tram No 38 and Bus No 10A, please see [the map](#)

##### **[Senator Hotel Vienna](#)**

With the bus 10A directly to the main university building in 12 minutes. The bus stop is about 7 minutes walking away, please see the [map](#)

In the following two figures we provide you with an overview of the various locations and a more detailed look on the relevant bus stops in the surrounding of the venue.

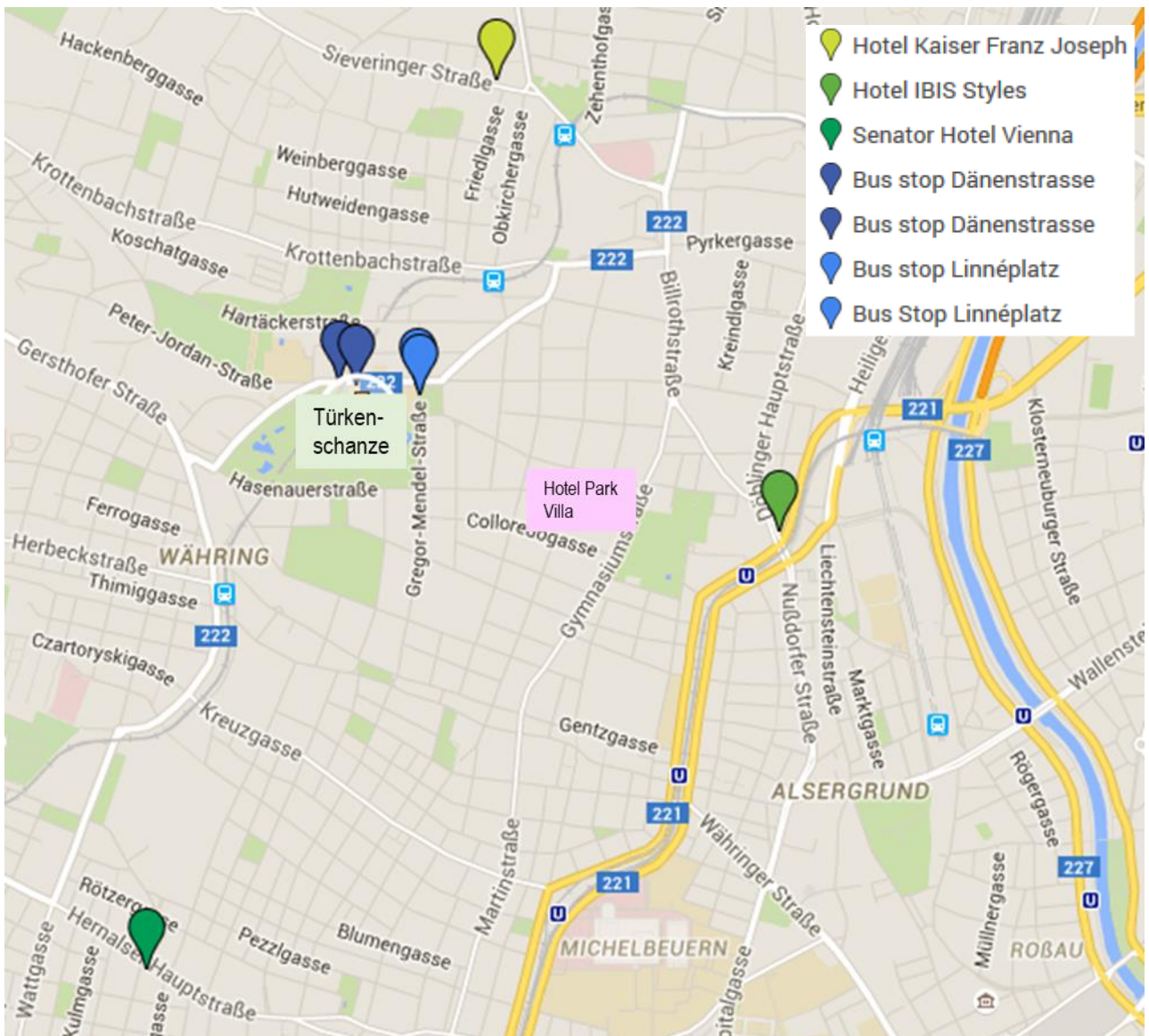
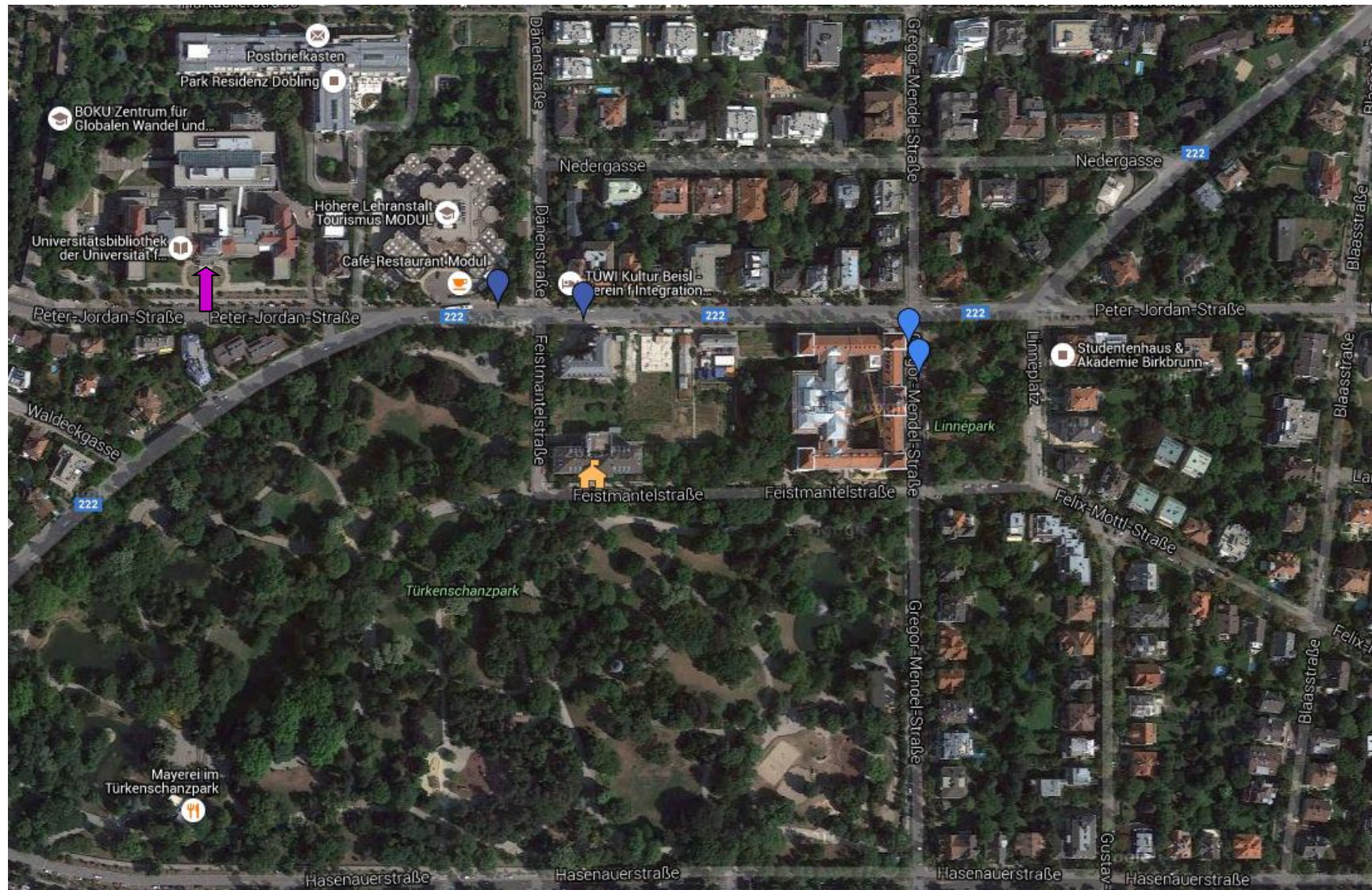


Figure 1: Overview map, highlighting the university area (Türken­schanze), bus stops and recommended hotels.





📍 Bus stop Dänenstrasse

📍 Bus stop Linnéplatz

→ Meeting venue: Exnerhaus, Peter-Jordan-Str. 70

## 5. Touristic Information

Below you will find a list of useful websites with information about Vienna:

- [Vienna Info](#) – Tourism information Portal of Vienna
- [Culture & History](#) – Vienna City Information

## 6. Contact Information

Please do not hesitate to contact us with any further questions you might

have. Roman Michalak: [roman.michalak@un.org](mailto:roman.michalak@un.org)

Stefanie Linser: [stefanie.linser@boku.ac.at](mailto:stefanie.linser@boku.ac.at)