



Demo 1: Raw Material Project Classification including Social and Environmental Considerations

.....
Erika Ingvald

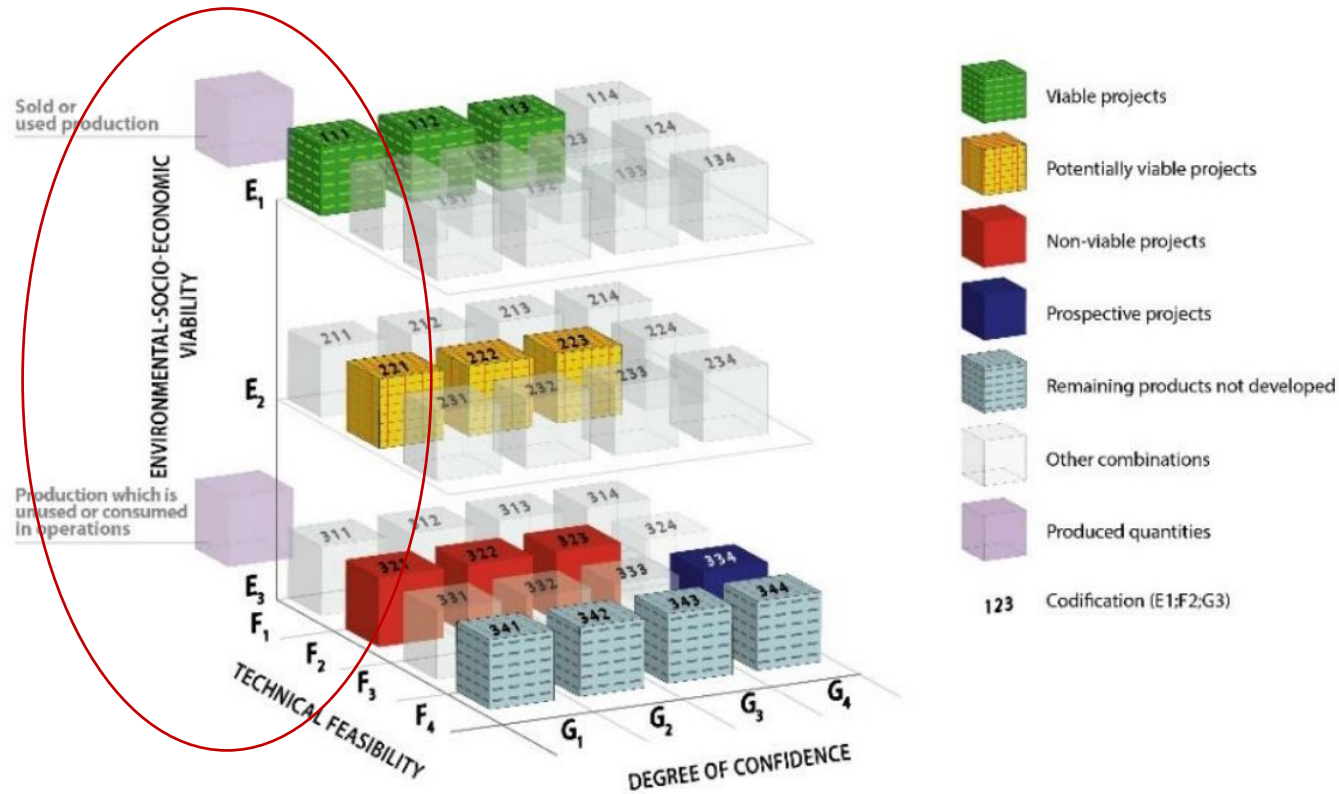


- Focus on the E-axis

Raw Material Project Classification

Social and Environmental Considerations

UNFC Categories and Example Classes



- Focus on the E-axis

Raw Material Project Classification

Social and Environmental Considerations

A GUIDANCE FOR THE APPLICATION OF THE UNFC-2009 FOR MINERAL RESOURCES IN FINLAND, NORWAY AND SWEDEN



Deliverable D4.1
Case study review with guidance and examples for applying the UNFC to European mineral resources

Authors:
Mark U. Frandsen
Kari Asl Lisbeth
1 Geologi (GEUS)
2 Geologi (GEUS)
E-mail of mark.sin
Version:
This report received Union's innovatio agreeeme



Deliverable Data	
Deliverable number	D4.1
Dissemination level	Public
Deliverable name	Report on harmonization challenges, reviewing European aggregated commodities
Work package	WP4, UNFC Pilot
Lead WP/Deliverable beneficiary	NGU
Deliverable status	
Submitted (Author(s))	29/09/2021 Mark Si
Verified (WP leader)	30/09/2021 Kari Asl
Approved (Coordinator)	12/10/2021 Lisbeth

Establishing the European Geological Surveys Research Area to deliver a Geological Service for Europe



Deliverable D4.2
Report on harmonization issues, data gaps and challenges, reviewing also the quality of Pan-European aggregated inventories for selected commodities

Authors and affiliation:
Janne Hokka¹, Pasi Eilu²
Frands Schjeth¹, Kari Aslaksen Aasly³
¹Geological Survey of Finland
²Geological Survey of Denmark
³Geological Survey of Norway

Deliverable Data	
Deliverable number	D4.2
Dissemination level	Public
Deliverable name	Report on harmonization challenges, reviewing European aggregated commodities
Work package	WP4, UNFC p
Lead WP/Deliverable beneficiary	NGU
Deliverable status	
Submitted (Author(s))	12/08/2021
Verified (WP leader)	29/09/2021
Approved (Coordinator)	08/10/2021

Deliverable 4.1 och 4.2

United Nations
Economic and Social Council
ECE/ENERGY/GE.3/2020/10
Dist.: General
15 April 2020
Original: English only

Economic Commission for Europe
Committee on Sustainable Energy
Expert Group on Resource Management
Eleventh session
Geneva, 20-24 April 2020
Item 11 of the provisional agenda
Application of the United Nations Framework Classification for Resources (UNFC) in different geographical contexts

United Nations Framework Classification for Resources Case Studies from Finland/Estland, Sweden and Norway – Nordkalk limestone and Forsand sand and gravel mines

Prepared by the Geological Survey of Norway, the Geological Survey of Sweden, Nordkalk, Forsand Sandkompani and Petronav a.s.

Summary
This study demonstrates how the United Nations Framework Classification for Resources (UNFC) is being used to classify industrial mineral extraction projects for limestone in Finland and Sweden, and for a gravel and sand project in Norway. The report summarizes the main features of UNFC before describing the Nordkalk limestone projects. These projects demonstrate the usefulness of UNFC in comparing environmental, social, economic conditions and technical feasibility that may facilitate or hamper project development. The gravel and sand project demonstrates the use of UNFC in a case with few



English



Advanced Search

COVID-19 Response Find out about UNECE's Latest Developments

- About UNECE
- Our work
- Themes
- SDGs
- Open UNECE
- Events
- Publications
- Media

UNFC AND SOCIAL AND ENVIRONMENTAL MANAGEMENT

UNFC and Social and Environmental Management

Until recently, social and environmental factors have rarely been considered in the classification of natural resources. Their importance has grown considerably in the last few years. Many projects have been delayed or cancelled because they failed to meet social or environmental expectations, even though they met all other requirements.

The various factors involved in resource classification do



Raw Material Project Classification

Social and Environmental Considerations

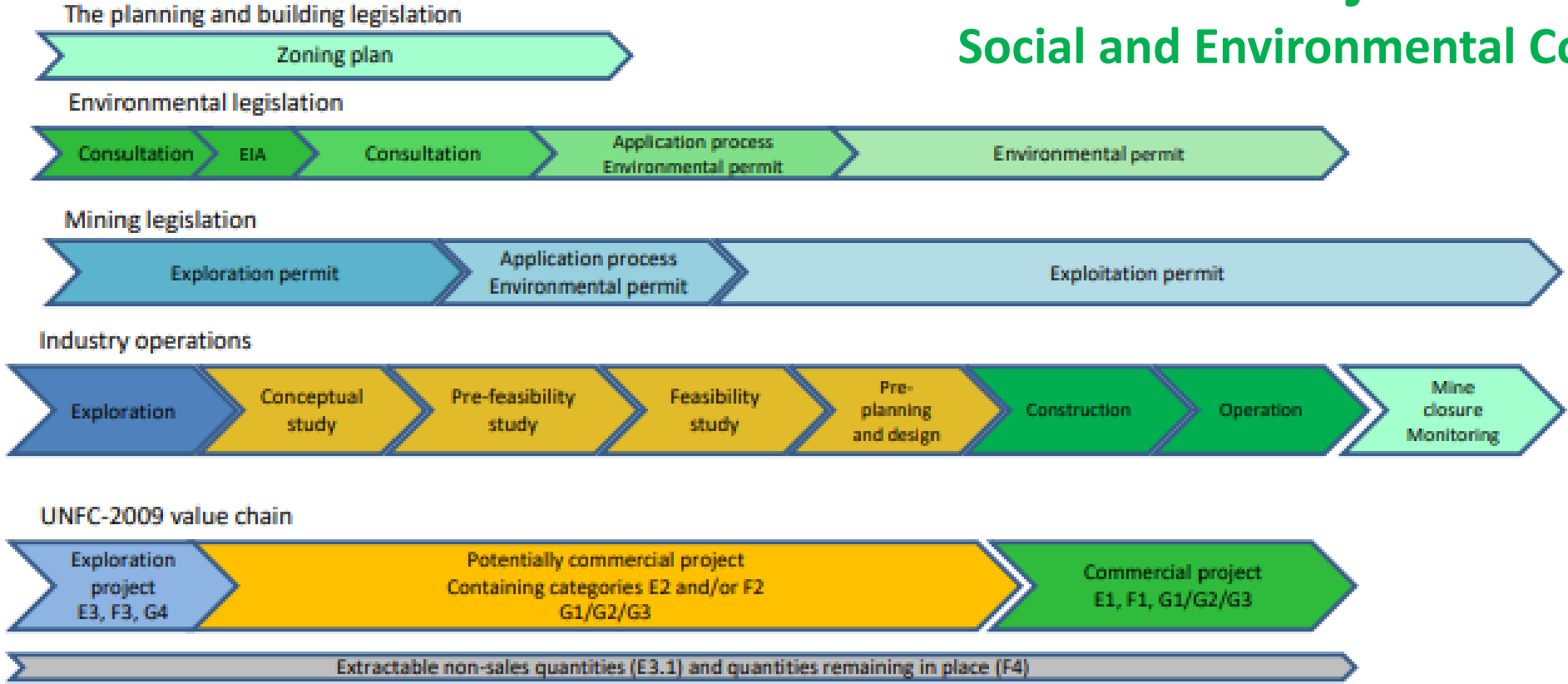


Figure 3.4.1 Schematic of mining-related project life cycles in government and industry processes (conceptual).



EU principles for sustainable raw materials



Social Principles

Human rights, engagement with communities of interest, employment, health and safety

- 1 Sustainable raw materials extraction and processing support human rights, communities and sound governance¹³ through:
 - a. respect for human rights, cultures, customs and values of people, including indigenous populations, affected by extraction and processing activities;
 - b. a constructive and active dialogue with communities and workers concerned, including those of indigenous people, to advance the social, economic and institutional development of those communities. The dialogue shall be effective and transparent and deliver on reporting arrangements with concerned stakeholders.
 - c. commitment to ensure safe living conditions in communities concerned, including of indigenous people, are not jeopardised by unsafe extraction and processing operations.
- 2 Sustainable raw materials extraction and processing support Decent Work for the workforce¹⁴ through:
 - a. improving the worker's health and safety with the commitment of achieving a zero accidents target;
 - b. continuously improving the skills of the workers, creating and maintaining a stable and quality workplace;
 - c. respect for worker's rights in line with the International Labour Organization Fundamental Conventions

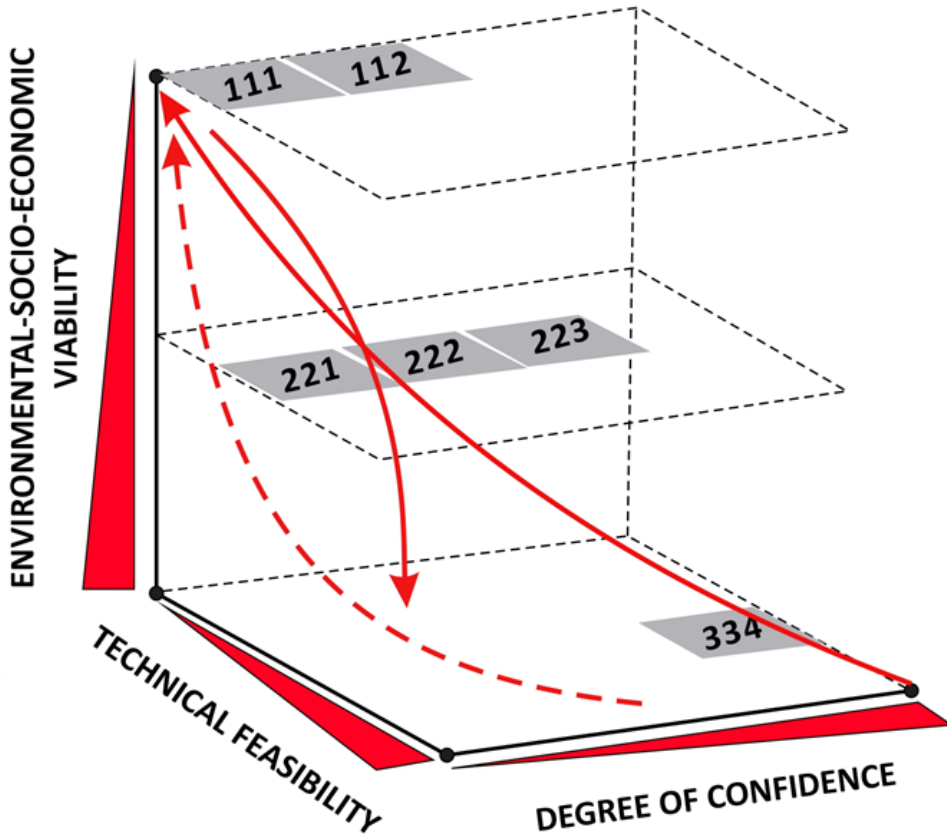
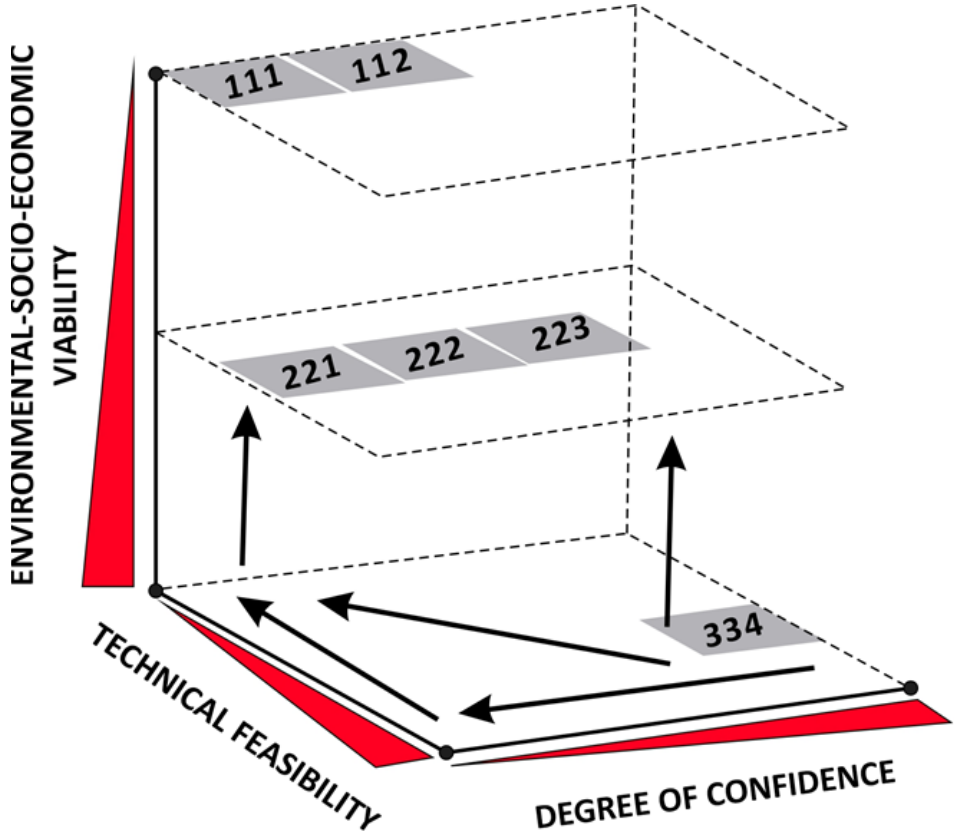


DG GROW: <https://op.europa.eu/sv/publication-detail/-/publication/5177cf81-78db-11ec-9136-01aa75ed71a1/language-en>



Raw Material Project Classification

Social and Environmental Considerations



A case...

2009 – MÖD, ok -> to MMD for conditions
2012 – MÖD, ok
2014 – MMD, ok but appealed by EPA

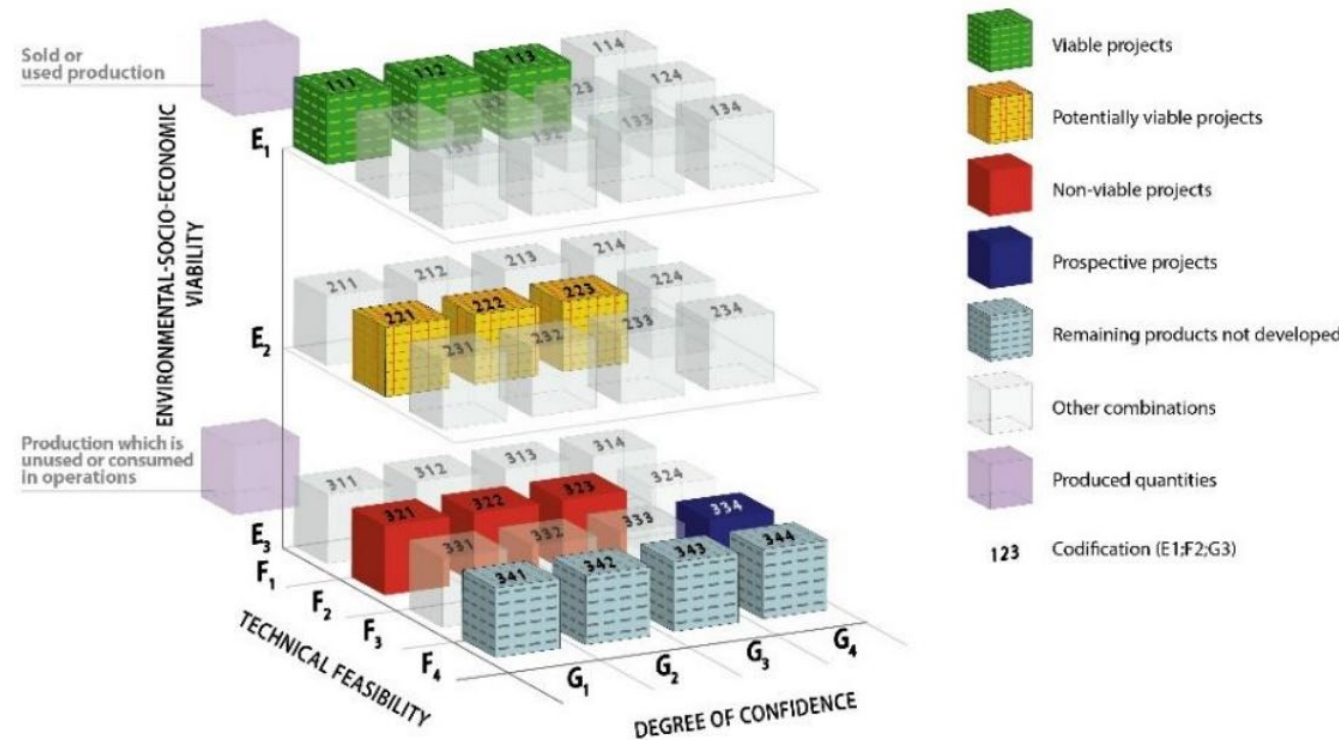
2006 – application from company
2013 – High Court sends back down to MMD
2015, May – MÖD, case at rest,
wait for gov. decision on new N2K
2015, Aug – New N2K, by gov
2017, Oct – MÖD opens case again

2008 – MMD rejection
2011 – MMD rejection, appeal
2017, May – High Court, backing gov N2K
In the end the company decided to leave the project,
worth billions and billions, and Sweden is now dependent on import

MMD: Land and environmental Court, MÖD: Land and environmental court of appeal
HFD: Administrative court of appeal

Raw Material Project Classification Social and Environmental Considerations

UNFC Categories and Example Classes



... bouncing up and dow!

2006 – application from company
 2008 – MMD rejection, appeal
 2009 – MÖD, ok -> to MMD for conditions
 2011 – MMD rejection, appeal
 2012 – MÖD, ok
 2013 – High Court sends back down to MMD
 2014 – MMD, ok but appealed by EPA
 2015, May – MÖD, case at rest,
 wait for gov. decision on new N2K
 2015, Aug – New N2K, by gov
 2017, Oct – MÖD opens case again
 2017, May – High Court, backing gov N2K

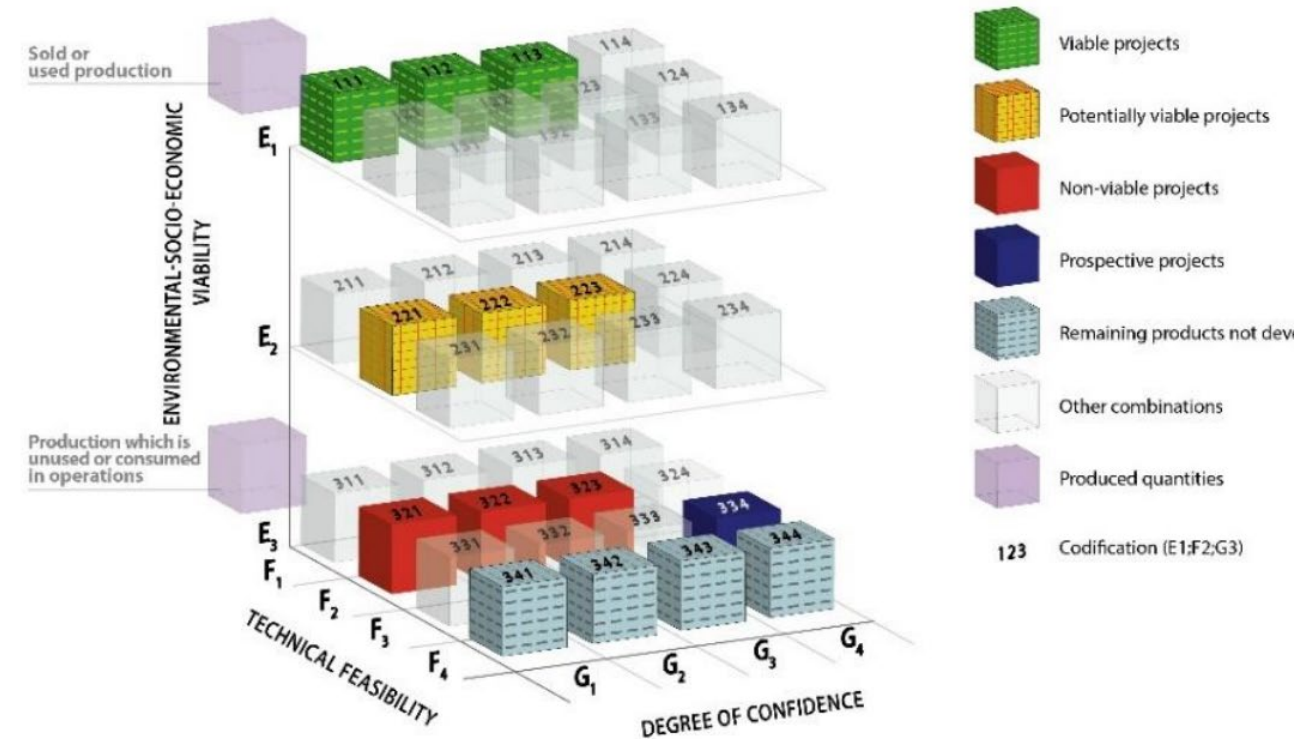
In the end the company decided to leave the project, worth billions and billions, and Sweden is now dependent on import

MMD: Land and environmental Court, MÖD: Land and environmental court of appeal
 HFD: Administrative court of appeal

Raw Material Project Classification

Social and Environmental Considerations

UNFC Categories and Example Classes



Raw Material Project Classification

Social and Environmental Considerations



REFERENCES

- **Nordic guidance**
https://unece.org/fileadmin/DAM/energy/se/pdfs/UNFC/UNFC-Nordic-Guidance-Public-Comments/20170424_A_guidance_for_the_application_of_the_UNFC.pdf
- **Mintell4EU deliverable 4.1 och 4.2**
<https://geoera.eu/projects/mintell4eu7/>
- **ORAMA**
<https://orama-h2020.eu/>
- **Nordic Case Study – limestone and gravel**
https://unece.org/DAM/energy/se/pdfs/egrm/egrm11_apr2020/ECE_ENERGY_GE.3_2020_10_UNFC_Nordic_Case_Studies.pdf

Thank you!

Erika Ingvald
Head of Division, SGU, Vice chair, EGRM

[UNECE](#)

Date _1_ | _2_ | 2022, Geneva

