

Distr.: General
12 April 2022

Original: English

Economic Commission for Europe

Inland Transport Committee

Global Forum for Road Traffic Safety

Group of Experts on Road Signs and Signals

Fourth session of informal

Geneva, 26 April 2022

Item 2 of the provisional agenda

Submitted by Denmark

This document contains a note on road signs, markings and special traffic regulations for cyclists and drivers of small mopeds along roads, streets, cycle lanes or cycle tracks in Denmark.

Note on road signs, markings and special traffic regulations for cyclists and drivers of small mopeds along roads, streets, cycle lanes or cycle tracks.

Introduction to the Law on Road Traffic and the Law on Road Signs, Road Markings and Special Regulations on Road Signs. The following is translated from Danish legislation.

Road users must comply with the basic traffic rules. Road users must comply with the instructions for traffic given by road signs, road markings on the carriageway or cycle track, signalling devices or in any other way in accordance with the basic rules of the Road Traffic Act.

Special rules for cyclists (and drivers of small mopeds – speed limit 30 km/h). Where there is sufficient space, however, two cyclists may ride side by side if this can be done without danger or undue inconvenience. When signalling to overtake, cyclists shall not ride side by side unless traffic conditions permit or necessitate this. However, a cycle with three or more wheels may never be driven alongside another cycle.

Cyclist must always keep right on the lane, special cycle lane or cycle track or cycle street in the direction of traffic. The rule applies to the types 1, 1a, 2, 3 and 3a shown and described below.

Cycle lanes are not only made on short stretches but on a longer stretch and therefore it becomes an area sign where from all side roads a zone sign must be installed.

Cyclists (drivers of small mopeds - speed limit 30 km/h)

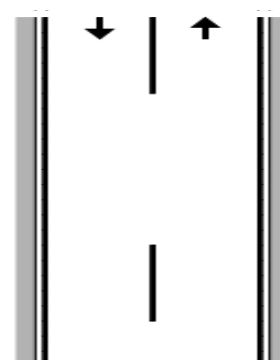
Type of area on road or track

Type 1) Cycle on the way. Cycle must keep to the right in the direction of traffic.

Road signs and markings:

No road signs or markings, but usually a narrow (0,10 m) continuous longitudinal line to mark the limits of the carriageway.

Used on urban and suburban roads.



or



Type 1a) Cycle on the road (Cycle street with special traffic rules). Cycle must keep to the right in the direction of traffic.

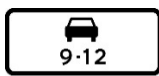
Road signs and markings:

Road signs indicate an area with special traffic rules in addition to the normal traffic rules. Cycle street allows cycle and small moped (speed limit 30 km/h) to use the street. Other vehicles may be permitted - for example at certain times.

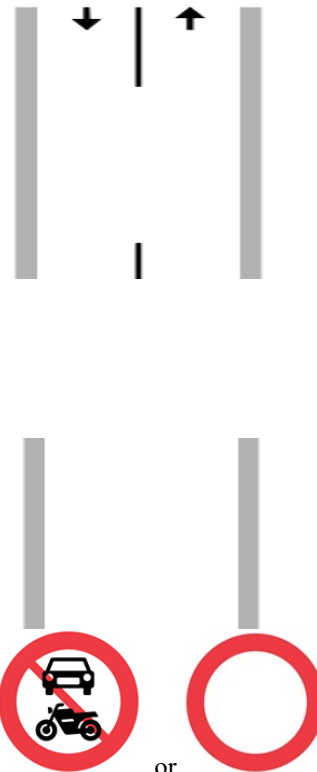
Used only on urban roads and streets.



Recommended area signs



Possible additional panel which allow other vehicles in the street



To be used, but only if motor vehicle, large moped, etc. are prohibited.

or

Type 2). Cycle in special cycle lane on the road. Cycle must keep right in direction of traffic in designated cycle lane

-

Type 2). Cycle in special cycle lane on the road. Cycle must keep right in direction of traffic in designated cycle lane

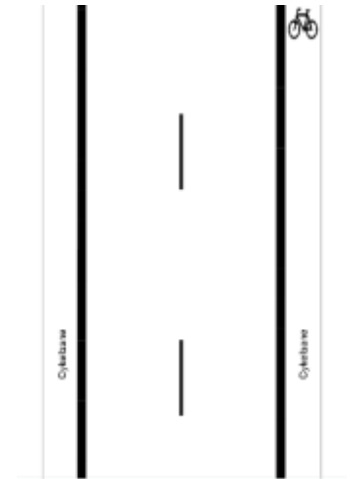
Road signs and markings:

No road signs. Road markings indicate special cycle lane with a wide (0,30 m) continuous longitudinal line and the cyclist symbol on the surface.

Used on roads in built-up area and outside built-up area.



compulsory cycle track (drivers of small mopeds (speed limit 30 km/h) must also use the cycle track).



Type 3). Cycle on a narrow cycle track along the road. Cycle must keep to the right in the direction of traffic on a compulsory cycle track

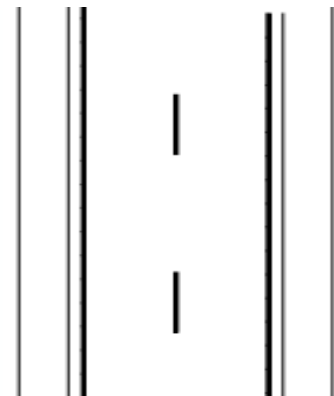
Road signs and markings:

Road sign with compulsory cycle track - cyclists must use the cycle track. Drivers of small mopeds (speed limit 30 km/h) must also use the cycle track unless small mopeds are prohibited.

Used on roads in built-up area and outside built-up area.



Compulsory cycle track (drivers of small mopeds must also use the cycle track).





To be used, but only if mopeds are prohibited on the cycle track.

Type 3a) Cycle on a wide independent cycle track. Cycle must keep to the right in the direction of traffic on the designated cycle track.

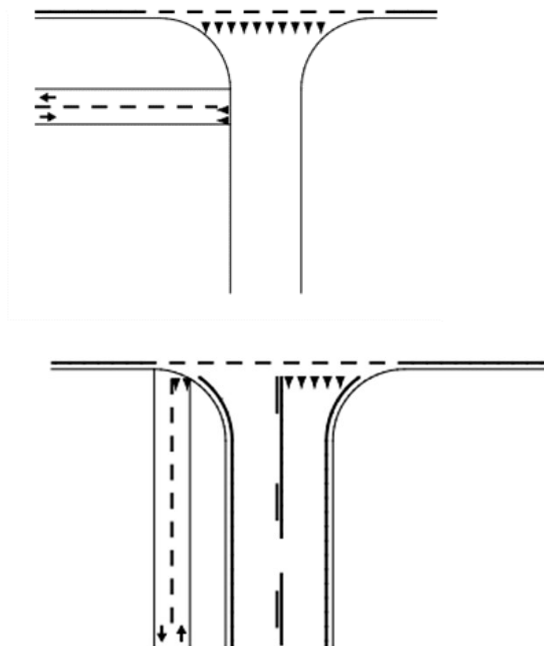
Road signs and markings:

Road sign with compulsory cycle track - cyclists must use the cycle track. Drivers of small mopeds (speed limit 30 km/h) must also use the cycle track unless small mopeds are prohibited.

Used on roads in built-up area and outside built-up area.



Compulsory cycle track (drivers of small mopeds (speed limit 30 km/h) must also use the cycle track).



To be used, but only if mopeds are prohibited on the cycle track.

Legislation and regulations governing road traffic, road signs and cycle street markings in Denmark.

Special traffic regulations:

Cycle on road or street (Cycle street where special traffic rules apply). Cycle must keep to the right in the direction of traffic according to the Danish basic traffic rules.

Cycle Street

The sign indicates an area where the following special traffic rules apply:

- 1) The street is reserved for cycles and small mopeds (speed limit 30 km/h).
- 2) Permission for other vehicles in the area may be given (In Denmark we do not have cycle streets exclusively for cyclists). In this case, driving must be carried out in accordance with the provisions of points 4 to 7.
- 3) Permission for other vehicles shall be indicated on an additional panel. In addition, different types of vehicles can be distinguished and time limits can be set.
- 4) Driving on the carriageway may only take place at a speed corresponding to that of cyclists and drivers of small mopeds (normally less than 30 km/h).
- 5) Road users must show special attention and respect for each other.
- 6) Road users must not unnecessarily obstruct the progress of other road users.
- 7) Parking in a cycle street must not take place outside specially marked places.

Road signs and markings:

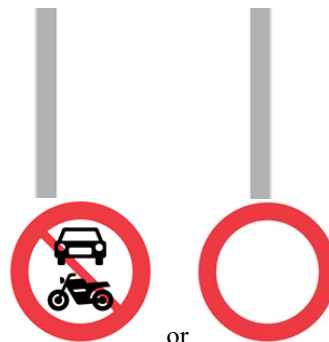
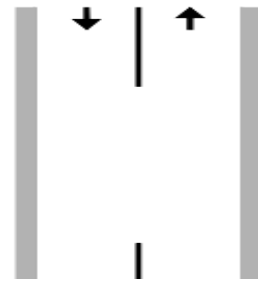
Road signs indicate an area where special traffic rules in addition to the normal traffic rules apply. Cycle street allows cycle and small moped riders to use the street. Other vehicles may be permitted - for example at certain times.

Used only on urban roads and streets.

Recommended area signs



Additional panel, which allow vehicles used for carrying goods



To be used, but only if motor vehicle, large moped, etc. are prohibited.

or