



Water-oriented Living Labs for a Water-Smart Society

Durk Krol
Belgium/Water Europe

Water Europe

- Recognized voice and promoter of water-related RTD and innovation in Europe
- **Mission:**
 - ✓ Improve **coordination and collaboration** in the water ecosystem in the EU and beyond;
 - ✓ Enhance **performance and competitiveness** of the water ecosystem;
 - ✓ Contribute to solving **global water challenges** through RTD&I.
- **Water Europe Strategy:**
 - ✓ **Multistakeholder** association representing the whole water value-chain
 - ✓ **Value-based** organisation: Water Vision

Values and members



Corporate members:

College A: Multinational corporations
College B: Research & Technology developers
College C: Utilities
College D: Suppliers & SMEs
College E: Large water users

Associate members:

College F: Public Authorities
College G: Civil Society Organisations

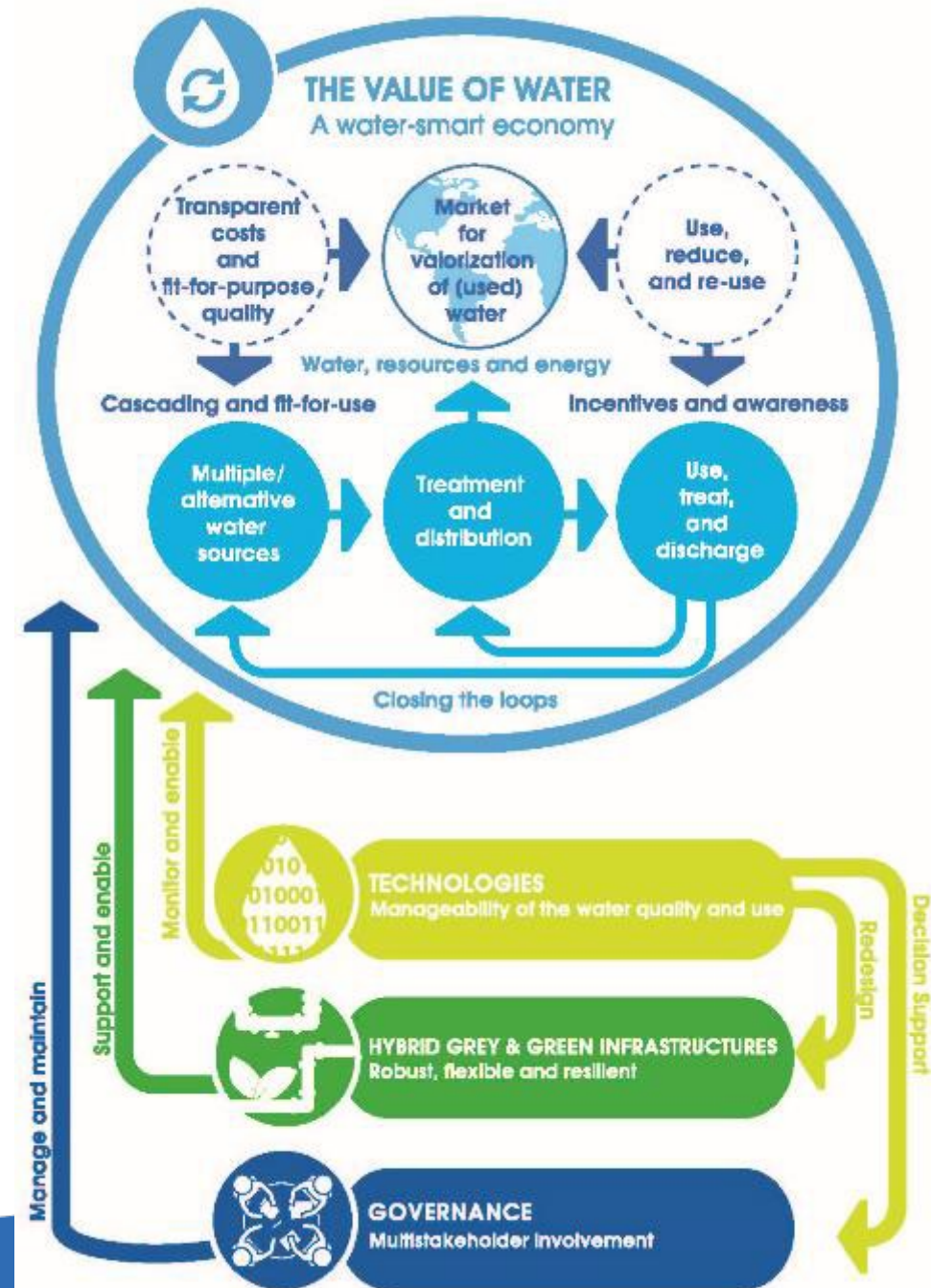
WE Water Vision

Challenges:

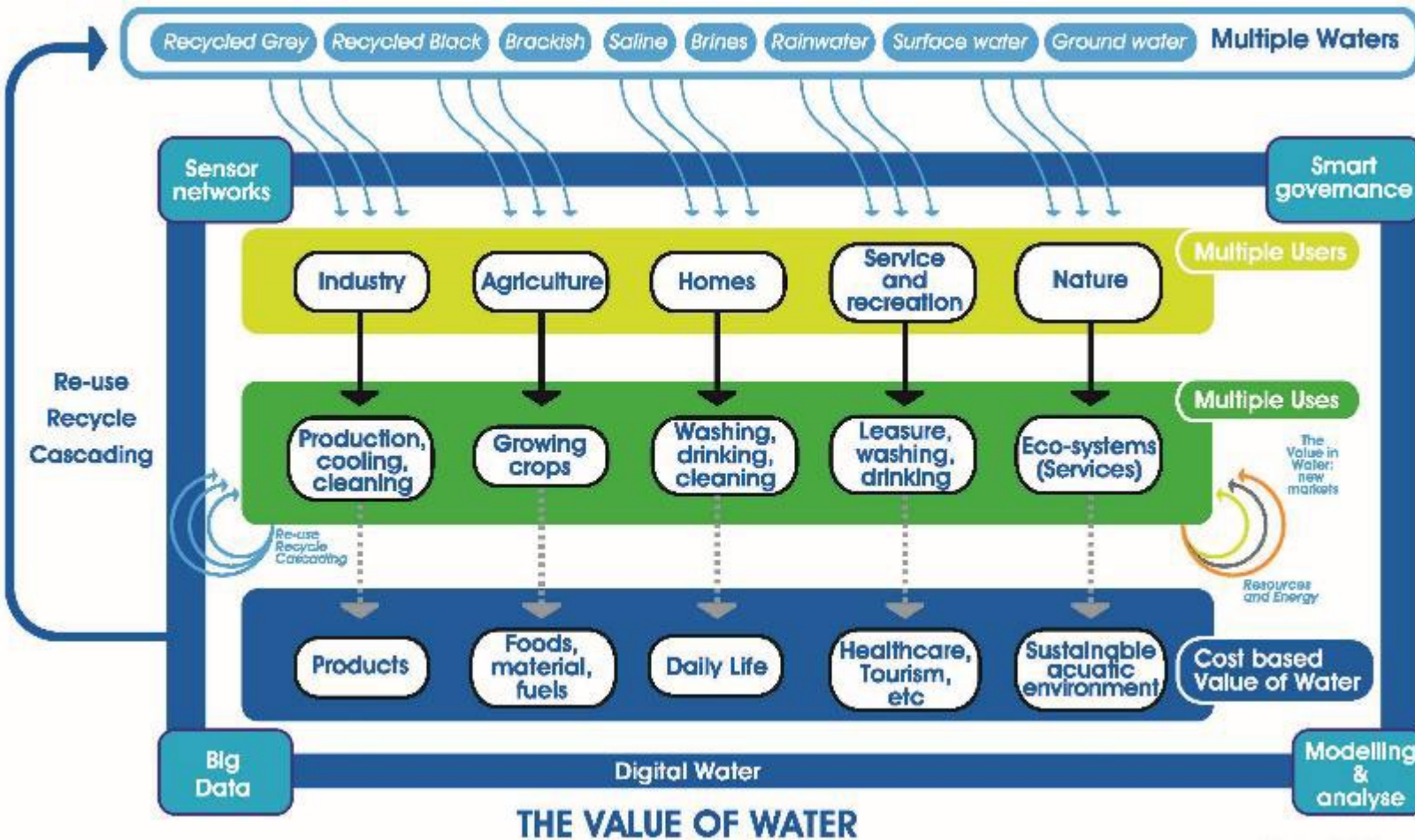
- Water scarcity
- Pollution of the environment
- Adaptation to climate change and extreme events

Water-Smart Society:

- a society in which the **true value of water** is recognised and realised;
- all available water sources are managed in such a way that **water scarcity and pollution of water resources** are avoided;
- Water and resource loops are largely closed to foster a **circular economy** and optimal resource efficiency,
- the water system is **resilient** against the impact of climate change events.
- A society in which **all relevant stakeholders** are involved in the governance of our water system.



WE Innovation Areas



1. Multiple Waters
2. Digital Water
3. Value in Water
4. Hybrid Grey-Green Infrastructure

Water-Oriented Living Labs (WoLLs)



ATLAS
OF THE
EU
WATER
ORIENTED
LIVING LABS

Definition of European Water-oriented Living Labs (WoLLs)

- 1 **Demo-type** and platform-type research and innovation settings, with **context specific** needs and enabling conditions
- 2 **Water-oriented** interventions with a cross-sector nexus approach in real-world and/or realistic environments
- 3 Proactive learning and innovation **ecosystem** with R&D continuity and reproducibility
- 4 Open and local **multi-stakeholder governance** structure with democratic control systems



Water-Oriented Living Labs (WoLLs)

Horizon Europe Water4All Partnership



➔ **Engaging** with existing operating WoLLs and Demos

➔ co-development of **practical, cost-efficient and affordable solutions** for replication in different contexts

➔ **Establishment** of new WoLLs and Demo

➔ Enabling **new environments** for facilitating replication.

➔ Engaging with the development/ **Investment** programmes

➔ Connecting support and funding from a **combination** of research and innovation programmes

WATER EUROPE LEADS THE PILLAR D: DEMONSTRATION OF INNOVATION AND SCALE UP THROUGH WOLLS

Thank you

(please include your contact information)



Email address: durk.krol@watereurope.eu



Website: www.watereurope.eu



Twitter: <https://twitter.com/H20EU>



LinkedIn: <https://www.linkedin.com/company/watereurope/>

