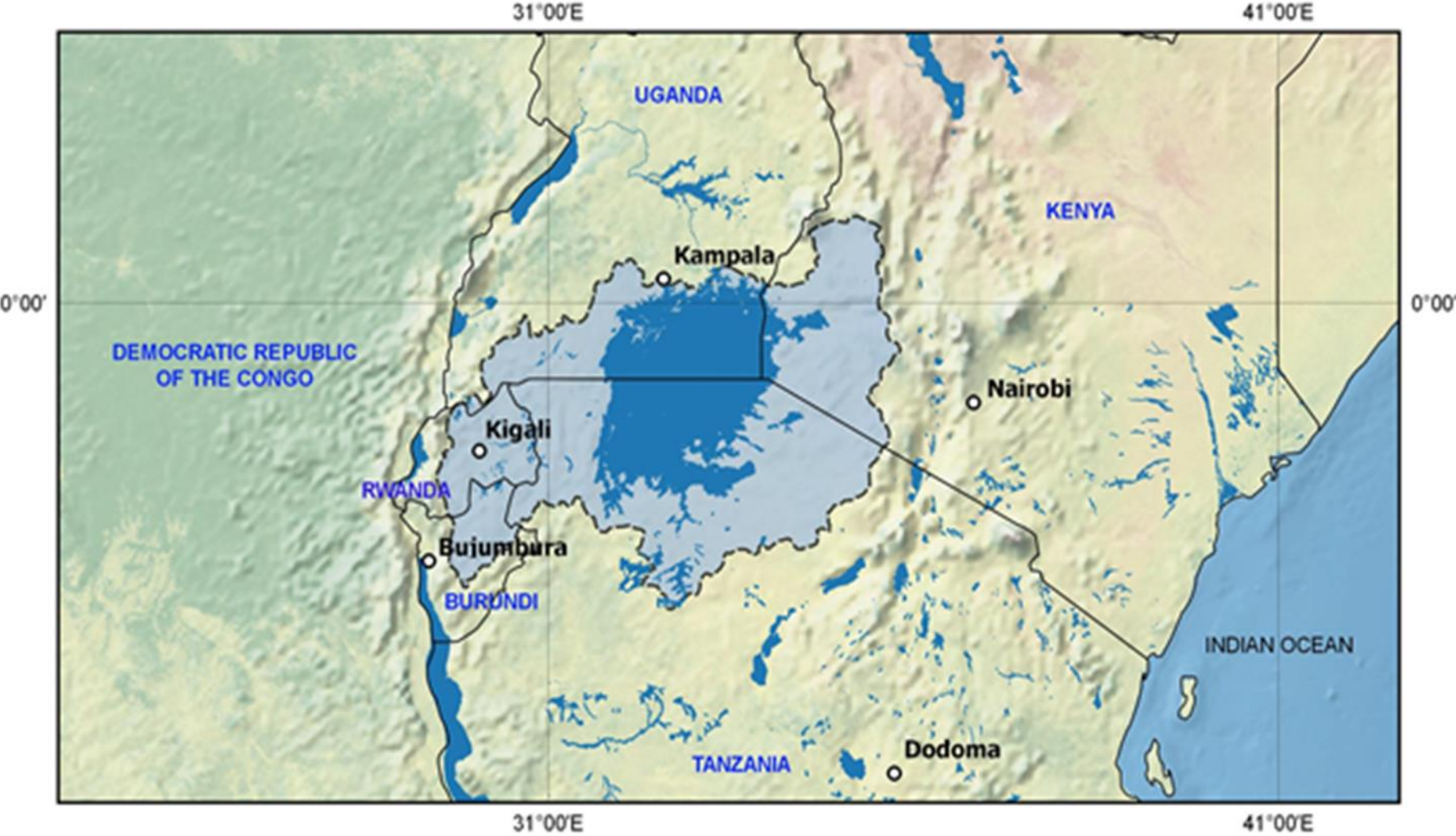




Adapting to Climate Change in Lake Victoria Basin project

Mr. Isaac Nyarwaya
Acting Executive Secretary,
Lake Victoria Basin Commission Secretariat

Lake Victoria Basin

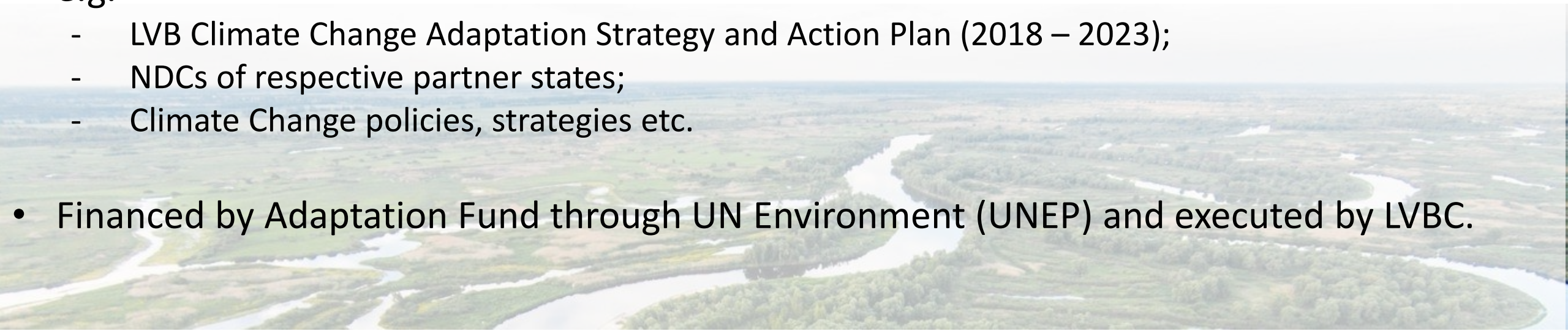


Climate Change impacts in LVB



Adapting to Climate Change in Lake Victoria Basin project

- A flagship regional project implemented by Five EAC partner states namely: Burundi, Kenya, Tanzania, Uganda and Rwanda
- The project aims to increase climate resilience in the LVB at both regional, national and local levels.
- Aligns to Regional and National Climate Change Policy Frameworks in EAC Partner States e.g.
 - LVB Climate Change Adaptation Strategy and Action Plan (2018 – 2023);
 - NDCs of respective partner states;
 - Climate Change policies, strategies etc.
- Financed by Adaptation Fund through UN Environment (UNEP) and executed by LVBC.



Highlight of the achievements in ACC-LVB project in Rwanda

- Installed roof top rainwater harvesting system in 160 households and constructed gabions



Highlight of the achievements in ACC-LVB project in Uganda

- Installed 2 valley tanks (to aid in rainwater harvesting) and water supply system



Highlight of the achievements in ACC-LVB project in Tanzania

- Adaptation technologies piloted in Ng'yaha village, Tanzania



Key challenges in the implementation of regional projects e.g. ACC-LVB project

- Coordination and reaching consensus with a diverse range of stakeholders at the regional, national and subnational levels is time consuming that sometimes lead to delays in executing of project interventions.
- Technical capacity gaps at different levels in partner states;
- Balancing regional interests vis a vis national and subnational priorities and needs;
- Harmonization of policies frameworks in partner countries to ensure convergence and uniformity of addressing regional issues/challenges;
- Financial constraints to address pressing challenges affecting trans-boundary resources e.g. climate change.

Key Lessons Learnt in the implementation of regional projects e.g. ACC-LVB project

- Application of a regional approach to address challenges facing trans-boundary resources e.g. climate change is an important element in enhancing regional resilience and sustainability;
- Committed by stakeholders at regional national, subnational and local levels is key for effective and efficiency implementation of the trans-boundary projects.
- Small grants to communities can translate into remarkable transformation effects to livelihoods and ecosystems resilience



THANK YOU



Nyarwaya@lvbcom.org



www.lvbcom.org

