

Unique Identifier (UI)

Thoughts of the IWVTA ambassador to GRPE 85

Bill Coleman – January 2022

What is a UI?

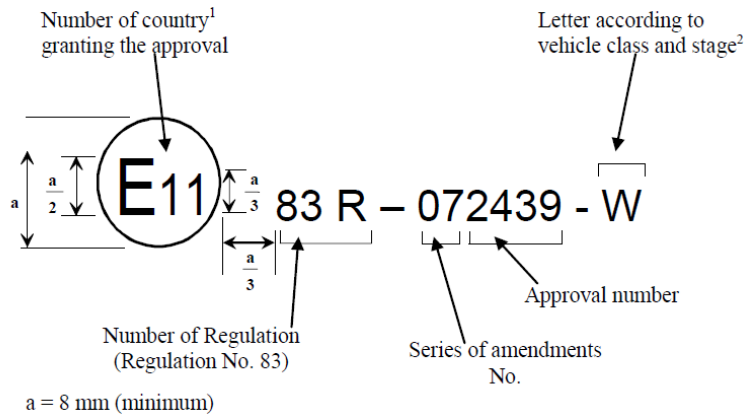
3. The Unique Identifier (hereafter called UI) is introduced by the 1958 Agreement Revision 3. If used, the UI serves as:
 - (a) A number assigned to a product upon storing the type approval(s) of that product on the secure internet database in accordance with Schedule 5 of the 1958 Agreement Revision 3. The UI is generated by the database automatically.

For the purpose of this Article, a product is a system, component, equipment or part and may incorporate multiple type approvals.
 - (b) An approval marking consisting of the UI number preceded by the symbol and replacing the approval marking(s) required by the UN Regulation(s) in case those UN Regulation(s) allow for it. Any leading zeros in the UI number may be omitted in the marking.
4. A product may consist of multiple approved components with their unique type approval numbers assigned to it, as is typically for lamp units. There can only be one UI assigned to a product and one UI applies to one product only. Nonetheless, different products may incorporate the same components with the same type approval numbers.

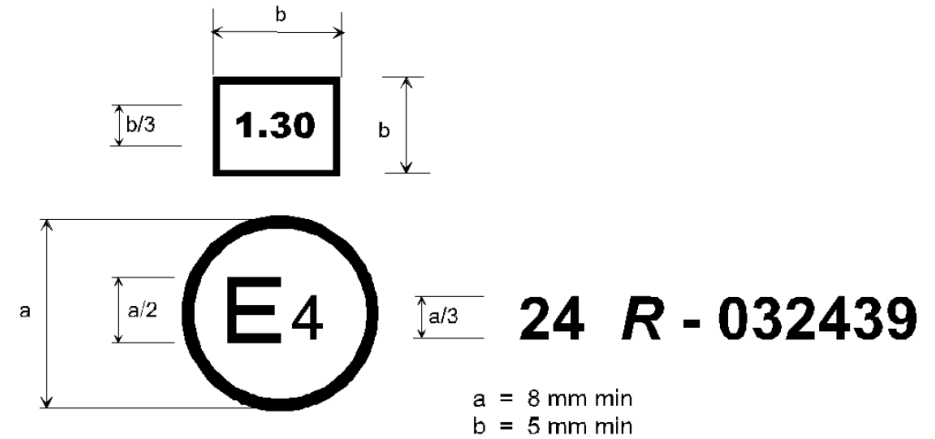
GRPE example – „Powertrain = Product“

- Current marking requirements:

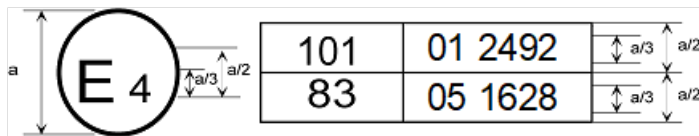
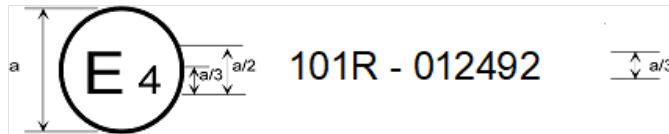
- R83 -



- R24 -



- R101 -





Pros and Cons

- One label in place of 3 or 4
- No need to update if „only“ series of amendments changes
- Slight extra administrative burden
- PTI has to look up smoke coefficient (they will have access and will also be looking up e.g. lighting and brakes Uis)

UI in GRPE Regulations

Reg.	Comment	Labelling requirement?	Allow UI? (Ambassador recommendation)
15	LD Emissions, Obsolete	N/A	No
24	Diesel smoke	Yes (TA Number & coefficient)	Yes
40	Emissions, PI Motorcycles	Yes (TA Number)	?
47	Emissions, PI Mopeds	Yes (TA Number)	?
49	HD Emissions	Yes (TA Number, engine type and stage of approval)	?
68	Maximum speed	Yes (TA Number)	No
83	LD Emissions	Yes (TA Number and stage of approval)	Yes
84	Fuel consumption, Obsolete	N/A	No
85	Engine power	Yes (TA Number)	Yes
96	Agricultural & non-road mobile machinery	Yes (TA Number, power band fixed/variable speed). Can be combined with e.g. R-120	?

UI in GRPE Regulations

Reg.	Comment	Labelling requirement?	Allow UI? (Ambassador recommendation)
101	LD CO ₂ emissions & electric range	Yes (TA Number) Can be combined with e.g. R-83	Yes
103	Replacement pollution control devices	Yes (TA Number) Can be combined with e.g. R-59	No
115	Gas fuel systems	Yes (TA Number, system type & cert'n plate)	Yes
120	Agricultural engines	Yes (TA Number) Can be combined with e.g. R-96	?
132	Retrofit emission control devices	Yes (TA Number & Class)	No
133	Vehicle reusability, recyclability and recoverability	Yes (TA Number)	No
143	HD Retrofit Dual Fuel systems	Yes (TA Number, system type & cert'n plate)	?
154	LD Emissions	Yes (TA Number)	Yes

Thanks for your attention

Any questions and/or feedback gratefully received, either immediately or afterwards to:

william.coleman@volkswagen.de

+49 5361 9 22855

If I cant answer your questions, I will take them to the next meeting of IWG IWVTA – 04.03.2022 in Paris (if feasible)