

**Reporting on global SDG indicator 6.5.2**  
**TEMPLATE of the second cycle for reporting**

---

**Content of the template**

The template is divided into four parts:

- Section I - Calculation of SDG indicator 6.5.2
- Section II - Information on each transboundary basin or group of basins
- Section III - General information on transboundary water management at the national level
- Section IV - Final questions

Country name: [[Uganda](#)]

## I. Calculation of Sustainable Development Goal indicator 6.5.2

### *Methodology*

1. Using the information gathered in section II, the information gathered in this section allows for the calculation of Sustainable Development Goal global indicator 6.5.2, which is defined as the proportion of transboundary basin area with an operational arrangement for water cooperation.
2. The step-by-step monitoring methodology for indicator 6.5.2, developed by UNECE and UNESCO in the framework of UN-Water, should be referred to for details on the necessary data, the definitions and the calculation.<sup>a</sup>
3. The value of the indicator at the national level is derived by adding up the surface area in a country of those transboundary basins (river and lake basins and aquifers) that are covered by an operational arrangement and dividing the area obtained by the aggregate total area in a country of all transboundary basins (both river and lake basins, and aquifers).
4. Transboundary basins are basins of transboundary waters, that is, of any surface waters (notably rivers, lakes) or groundwaters which mark, cross or are located on boundaries between by two or more States. For the purpose of the calculation of this indicator, for a transboundary river or lake, the basin area is determined by the extent of its catchment. For groundwater, the area to be considered is the extent of the aquifer.
5. An “arrangement for water cooperation” is a bilateral or multilateral treaty, convention, agreement or other formal arrangement among riparian countries that provides a framework for cooperation on transboundary water management.
6. For an arrangement to be considered “operational” all the following criteria need to be in place in practice:
  - (a) There is a joint body, joint mechanism or commission (e.g., a river basin organization) for transboundary cooperation (criterion 1);
  - (b) There are regular (at least once per year) formal communications between riparian countries in form of meetings (either at the political or technical level) (criterion 2);
  - (c) Joint objectives, a common strategy, a joint or coordinated management plan, or an action plan have been agreed upon by the riparian countries (criterion 3);
  - (d) There is a regular (at least once per year) exchange of data and information (criterion 4).

### *Calculation of indicator 6.5.2*

7. Please list in the tables below the transboundary basins (rivers and lakes and aquifers) in your country’s territory and provide the following information for each of them:
  - (a) The country/ies with which the basin is shared;

---

<sup>a</sup> Available from the UN-Water website: <https://www.sdg6monitoring.org/indicators/target-65/indicators652/> (updated version “2020”).

(b) The surface area of the basin (the catchment of rivers or lakes and the aquifer in the case of groundwater) within the territory of your country (in square kilometres (km<sup>2</sup>));

(c) Whether a map and/or a geographical information system (GIS) shapefile of the basin has been provided;

(d) Whether there is an arrangement in force for the basin;

(e) The verification of each of the four criteria to assess operationality;

(f) The surface area of the basin within the territory of your country which is covered by a cooperation arrangement that is operational according to the above criteria.

8. In case an operational arrangement is in place only for a sub-basin or a portion of a basin, please list this sub-basin just after the transboundary basin it is part of. In case there is an operational arrangement for the whole basin, do not list sub-basins in the table below.



Table 1

**Transboundary river or lake basin (please add rows as needed)**

Name of transboundary river or lake basin/sub-basin	It is a basin or a sub-basin? <sup>b</sup>	Countries shared with	Surface area of the basin/sub-basin (in km <sup>2</sup> ) within the territory of the country	Map and/or GIS shapefile provided (yes/no)	Covered by an arrangement (entirely, partly, no) (Ref. to questions in sect. II)	Criterion 1 applied (yes/no) (Ref. to questions in sect. II)	Criterion 2 applied (yes/no) (Ref. to questions in sect. II)	Criterion 3 applied (yes/no) (Ref. to questions in sect. II)	Criterion 4 applied (yes/no) (Ref. to questions in sect. II)	Surface area of the basin/sub-basin (in km <sup>2</sup> ) covered by an operational arrangement within the territory of the country
Nile basin	Basin	Burundi, DR Congo, Egypt, Ethiopia, Kenya, Rwanda, South Sudan, Sudan, Tanzania and Uganda	204,419	Yes	Entirely	Yes	Yes	Yes	Yes	204,419
Lake Victoria sub-basin	Sub-basin	Burundi, Kenya, Rwanda, Tanzania, Uganda	61,665	Yes	Entirely	Yes	Yes	Yes	Yes	61,665
Lake Edward sub-basin	Sub-basin	DR Congo, Rwanda, Uganda	18,991	Yes	Entirely	Yes	Yes	Yes	Yes	18,991
Lake Albert sub-basin	Sub-basin	DR Congo, Uganda	18,068	Yes	Entirely	Yes	Yes	Yes	Yes	18,068
Aswa sub-basin	Sub-basin	South Sudan, Uganda	27,665	Yes	Entirely	Yes	Yes	Yes	Yes	27,665

<sup>b</sup> List sub-basins after the basin they belong to.

Name of transboundary river or lake basin/sub-basin	It is a basin or a sub-basin? <sup>b</sup>	Countries shared with	Surface area of the basin/sub-basin (in km <sup>2</sup> ) within the territory of the country	Map and/or GIS shapefile provided (yes/no)	Covered by an arrangement (entirely, partly, no) (Ref. to questions in sect. II)	Criterion 1 applied (yes/no) (Ref. to questions in sect. II)	Criterion 2 applied (yes/no) (Ref. to questions in sect. II)	Criterion 3 applied (yes/no) (Ref. to questions in sect. II)	Criterion 4 applied (yes/no) (Ref. to questions in sect. II)	Surface area of the basin/sub-basin (in km <sup>2</sup> ) covered by an operational arrangement within the territory of the country
Kyoga sub-basin	Sub-basin	Kenya, Uganda	57,258	Yes	Entirely	Yes	Yes	Yes	Yes	57,258
Albert Nile sub-basin	Sub-basin	DR Congo, South Sudan, Uganda	20,772	Yes	Entirely	Yes	Yes	Yes	Yes	20,772
Kidepo sub-basin	Sub-basin	Kenya, South Sudan, Uganda	3,185	Yes	No	No	No	No	No	0
	Sub-basin									
<b>(A)</b> Total surface area of transboundary basins/sub-basins of rivers and lakes covered by operational arrangements within the territory of the country (in km <sup>2</sup> ) (do not double count sub-basins)										<b>204,419</b>
<b>(B)</b> Total surface area of transboundary basins of rivers and lakes within the territory of the country (in km <sup>2</sup> ) (do not double count sub-basins)			<b>207,604</b>							

Table 2

**Transboundary aquifers (please add rows as needed)**

Name of the transboundary aquifer	Countries shared with	Surface area of the aquifer <sup>c</sup> (in km <sup>2</sup> ) within the territory of the country	Map and/ or GIS shapefile provided (yes/no)	Covered by an aquifer specific arrangement (entirely, partly, no) (Ref. to questions in sect. II)	Covered within an arrangement not specific to the aquifer <sup>d</sup> (entirely, partly, no) (Ref. to questions in sect. II)	Criterion 1 applied (yes/no) (Ref. to questions in sect. II)	Criterion 2 applied (yes/no) (Ref. to questions in sect. II)	Criterion 3 applied (yes/no) (Ref. to questions in sect. II)	Criterion 4 applied (yes/no) (Ref. to questions in sect. II)	Surface area of the aquifer (in km <sup>2</sup> ) covered by an operational arrangement within the territory of the country
Mount Elgon Aquifer	Kenya, Uganda	4,900	Yes	No	No	No	No	No	No	0
Western Rift valley sediments	DR Congo, South Sudan Uganda	23,000	Yes	No	No	No	No	No	No	0
Kagera Aquifer	Burundi, Rwanda, Tanzania, Uganda	5,200	Yes	No	No	No	No	No	No	0
<b>(C)</b> Sub-total: surface area of transboundary aquifers covered by operational arrangements (in km <sup>2</sup> )										0
<b>(D)</b> Total surface area of transboundary aquifers (in km <sup>2</sup> )		<b>33,100</b>								

<sup>c</sup> For a transboundary aquifer, the extent is derived from the aquifer system delineation which is commonly done relying on information of the subsurface (notably the extent of geological formations). As a general rule, the delineation of aquifer systems is based on the delineation of the extent of the hydraulically connected water-bearing geological formations. Aquifer systems are three-dimensional objects and the aquifer area taken into account is the projection on the land surface of the system. Ideally, when different aquifer systems not hydraulically connected are vertically superposed, the different relevant projected areas are to be considered separately, unless the different aquifer systems are managed conjunctively.

<sup>d</sup> In the text of the agreement or arrangement or in the practice.





---

**Indicator value for the country****Surface waters:**

Percentage of surface area of transboundary basins of rivers and lakes covered by an operational arrangement:

$$A/B \times 100 = 204,419/207,604 \times 100 = 98.5\%$$

**Aquifers:**

Percentage of surface area of transboundary aquifers covered by an operational arrangement:

$$C/D \times 100 = 0/33,100 \times 100 = 0$$

**Sustainable Development Goal indicator 6.5.2:**

Percentage of surface area of transboundary basins covered by an operational arrangement:

$$((A + C)/(B + D)) \times 100 = (204,419 + 0)/(207,604 + 33,100) \times 100 = 84.9\%$$

**Spatial information**

If a map (or maps) of the transboundary surface water catchments and transboundary aquifers (i.e., “transboundary basins”) is available, please consider attaching them. Ideally, shapefiles of the basin and aquifer delineations that can be viewed in GIS should be sent.

**Additional information**

If the respondent has comments that clarify assumptions or interpretations made for the calculation, or the level of certainty of the spatial information, please write them here:

- Shape files on Transboundary aquifers are not available and but the spatial extent of transboundary aquifers in Uganda have been delineated from remote sensing and have not been verified on the ground.
-

---

Does your country have transboundary agreements or arrangements for the protection and/or management of transboundary waters (i.e., rivers, lakes or groundwater), whether bilateral or multilateral?

Yes /No

*If yes, list the bilateral and multilateral agreements or arrangements (listing for each of the countries concerned): [fill in]*

## II. Questions for each transboundary basin, sub-basin, part of a basin, or group of basins (river, lake or aquifer)

Please complete this second section for each transboundary basin (river or lake basin, or aquifer), sub-basin, part of a basin or a group of basins covered by the same agreement or arrangement where conditions are similar.<sup>1</sup> In some instances, you may provide information on both a basin and one or more of its sub-basins or parts thereof, for example, where you have agreements<sup>2</sup> or arrangements on both the basin and its sub-basin. You may coordinate your responses with other States with which your country shares transboundary waters, or even prepare a joint report. General information on transboundary water management at the national level should be provided in section III and not repeated here.

Please reproduce this whole section with its questions for each transboundary basin, sub-basin, part of a basin or group of basins for which you will provide a reply.

**Note:** Since the sub-basins presented in the table above are part of the Nile Basin apart from Kidepo which is largely a game reserve, the information for the whole Nile Basin applies to all of them and so there is no need to repeat it for each sub-basin.

**Name of the transboundary basin,-sub-basin, part of a basin or group of basins:** [Nile Basin]

List of the riparian States: [Burundi, DR Congo, Egypt, Ethiopia, Kenya, Rwanda, South Sudan, Sudan, Tanzania and Uganda]

**In the case of an aquifer, what is the nature of the aquifer and its relation with the river or lake basin:**

- |   |                                     |                          |
|---|-------------------------------------|--------------------------|
| Unconfined aquifer connected to a river or lake                   | <input checked="" type="checkbox"/> |                          |
| Unconfined aquifer with no or limited relation with surface water | <input type="checkbox"/>            | <input type="checkbox"/> |
| Confined aquifer connected to surface water                       | <input type="checkbox"/>            |                          |
| Confined aquifer with no or limited relation with surface water   | <input checked="" type="checkbox"/> |                          |

---

<sup>1</sup> In principle, section II should be submitted for every transboundary basin, river, lake or aquifer, in the country, but States may decide to group basins in which their share is small or leave out basins in which their share is very minor, e.g., below 1 per cent.

<sup>2</sup> In section II, "agreement" covers all kinds of treaties, conventions and agreements ensuring cooperation in the field of transboundary waters. Section II can also be completed for other types of arrangements, such as memorandums of understanding.

---

Other

Please describe: [fill in]

Unknown

**Percentage of your country's territory within the basin, sub-basin, part of a basin or group of basins: [98%]**

1. Is there one or more transboundary (bilateral or multilateral) agreement(s) or arrangement(s) on this basin, sub-basin, part of a basin or group of basins?

One or more agreements or arrangements exist and are in force

Agreement or arrangement developed but not in force

Agreement or arrangement developed, but not in force for all riparians

*Please insert the name of the agreement(s) or arrangement(s)* [[Agreed Minutes Endorsement of New Transitional Institutional Arrangements: "Nile Basin Initiative", Dar es Salaam, Tanzania, 22 February 1999 \(1999 NBI Arrangement\)](#)]

Agreement or arrangement is under development

No agreement or arrangement

*If there is no agreement or arrangement or it is not in force, please explain briefly why not and provide information on any plans to address the situation:* [[The 1999 NBI Arrangement was adopted by the Council of Ministers for Water Affairs of the Nile Basin Countries, including Burundi, DR Congo, Egypt, Eritrea, Ethiopia, Kenya, Rwanda, Sudan, Tanzania and Uganda. The Arrangement is a transitional mechanism to advance the Strategic Action Programme for Nile with the aim, 'to achieve sustainable socio-economic development through the equitable utilisation of, and benefit from, the common Nile Basin waters resources'.](#)]

[The Nile Basin Cooperative Framework Agreement \(CFA\) was signed by 6 out of 9 countries and is currently undergoing ratification with 4 of the countries having already ratified it. The CFA will enter into force on the 60<sup>th</sup> day following the date of the deposit of the 6<sup>th</sup> instrument or ratification or accession.](#)]

**If there is no agreement or arrangement and no joint body or mechanism for the transboundary basin, sub-basin, part of a basin or group of basins then jump to question 4; if there is no agreement or arrangement, but a joint body or mechanism then go to question 3.**

**Questions 2 and 3 to be completed for each bilateral or multilateral agreement or arrangement in force in the transboundary basin, sub-basin, part of a basin or group of basins.**

2. (a) Does this agreement or arrangement specify the area subject to cooperation?

Yes /No

If yes, does it cover the entire basin or group of basins and all riparian States?

Yes /No

Additional explanations? [[It covers the whole Nile Basin and the riparian states](#)]

---

Or, if the agreement or arrangement relates to a sub-basin, does it cover the entire sub-basin?

Yes /No

Additional explanations? [fill in]

Which States (including your own) are bound by the agreement or arrangement?  
(Please list): [Burundi, DR Congo, Egypt, Eritrea, Ethiopia, Kenya, Rwanda, South Sudan, Sudan, Tanzania and Uganda]

(b) If the agreement or arrangement relates to a river or lake basin or sub-basin, does it also cover aquifers?

Yes /No

If yes, please list the aquifers covered by the agreement or arrangement: [aquifers whose groundwaters are connected to the Nile River]

(c) What is the sectoral scope of the agreement or arrangement?

All water uses

A single water use or sector

Several water uses or sectors

*If one or several water uses or sectors, please list (check as appropriate):*

**Water uses or sectors**

Industry

Agriculture

Transport (e.g., navigation)

Households

Energy: hydropower and other energy types

Fisheries

Tourism

Nature protection

Other (please list): [fill in]

(d) What topics or subjects of cooperation are included in the agreement or arrangement?

**Procedural and institutional issues**

Dispute and conflict prevention and resolution

Institutional cooperation (joint bodies)

Consultation on planned measures

Mutual assistance

**Topics of cooperation**

Joint vision and management objectives

Joint significant water management issues

Navigation

- 
- Human health
  - Environmental protection (ecosystem)
  - Water quality
  - Water quantity or allocation
  - Cooperation in addressing floods
  - Cooperation in addressing droughts
  - Climate change adaptation
  - Monitoring and exchange**
  - Joint assessments
  - Data collection and exchange
  - Joint monitoring
  - Maintenance of joint pollution inventories
  - Elaboration of joint water quality objectives
  - Common early warning and alarm procedures
  - Exchange of experience between riparian States
  - Exchange of information on planned measures
  - Joint planning and management**
  - Development of joint regulations on specific topics
  - Development of international or joint river, lake or aquifer basin management or action plans
  - Management of shared infrastructure
  - Development of shared infrastructure
  - Other (*please list*): [fill in]

(e) What are the main difficulties and challenges that your country faces with the agreement or arrangement and its implementation, if any?

- Aligning implementation of agreement or arrangement with national laws, policies and programmes
- Aligning implementation of agreement or arrangement with regional laws, policies and programmes
- Lack of financial resources
- Insufficient human capacity
- Insufficient technical capacity
- Tense diplomatic relations
- Non-participation of certain riparian countries in the agreement
- No significant difficulties
- Other (*please describe*): [fill in]

---

(f) What are the main achievements in implementing the agreement or arrangement and what were the keys to achieving such success? [Key achievements include (i) basin water policies, strategies and knowledge base on water resources of the basin; (ii) transboundary investment projects for hydropower development and power interconnections among countries, watershed management, fisheries, water supply for irrigation and domestic use etc; (iii) increased capacity for transboundary water resources management . The keys to achieving such successes include increased trust and confidence among the riparian states, increased human and institutional capacity and support by development partners]

(g) Please attach a copy of the agreement or arrangement or provide the web address of the document (*please attach document or insert web address, if applicable*): [www.nilebasin.org]

3. Is your country a member of any joint body or mechanism for this agreement or arrangement?

Yes /No

If no, why not? (*please explain*): [fill in]

**Where there is a joint body or mechanism**

(a) If there is a joint body or mechanism, which kind of joint body or mechanism (*please tick one*)?

Plenipotentiaries

Bilateral commission

Basin or similar commission

Expert group meeting or meeting of national focal points

Other (*Transitional arrangement*): [Nile Basin Initiative]

(b) Does the joint body or mechanism cover the entire transboundary basin, sub-basin, part of a basin or group of basins?

Yes /No

(c) Which States (including your own) are members of the joint body or mechanism? (*Please list*): [All Nile Basin riparian state are members except Eritrea]

(d) Are there any riparian States that are not members of the joint body or mechanism? (*please list*): [Eritrea]

(e) If not all riparian States are members of the joint body or mechanism how does the joint body or mechanism cooperate with them?

No cooperation

They have observer status

Other (*please describe*): [fill in]

(f) Does the joint body or mechanism have any of the following features (*please tick the ones applicable*)?

A secretariat

If the secretariat is a permanent one, is it a joint secretariat or does each country host its own secretariat? (*Please describe*): [permanent joint secretariat]

---

A subsidiary body or bodies

*Please list (e.g., working groups on specific topics):* [Ministerial and Technical Committees]

Other features (*please list*): [working group and task teams]

(g) What are the tasks and activities of this joint body or mechanism?<sup>3</sup>

Identification of pollution sources

Data collection and exchange

Joint monitoring

Maintenance of joint pollution inventories

Setting emission limits

Elaboration of joint water quality objectives

Management and prevention of flood or drought risks

Preparedness for extreme events, e.g., common early warning and alarm procedures

Surveillance and early warning of water related disease

Water allocation and/or flow regulation

Policy development

Control of implementation

Exchange of experience between riparian States

Exchange of information on existing and planned uses of water and related installations

Settling of differences and conflicts

Consultations on planned measures

Exchange of information on best available technology

Participation in transboundary EIA

Development of river, lake or aquifer basin management or action plans

Management of shared infrastructure

Addressing hydromorphological alterations

Climate change adaptation

Joint communication strategy

Basin-wide or joint public participation and consultation of, for example, basin management plans

Joint resources to support transboundary cooperation

---

<sup>3</sup> This may include tasks according to the agreement or tasks added by the joint body, or its subsidiaries. Both tasks which joint bodies coordinate and tasks which they implement should be included.

- 
- Capacity-building
- Any other tasks (*please list*): [Facilitating decision making on water resources use]
- (h) What are the main difficulties and challenges that your country faces with the operation of the joint body or mechanism, if any?
- Governance issues   
*Please describe, if any:* [Inadequate mechanisms for public participation]
- Unexpected planning delays   
*Please describe, if any:* [fill in]
- Lack of resources   
*Please describe, if true:* [Financial resources]
- Lack of mechanism for implementing measures   
*Please describe, if true:* [Lack of enforcement mechanisms of decision made at transboundary level]
- Lack of effective measures   
*Please describe, if true:* [Lack of effective measures for monitoring implementation of decision made at transboundary level by member states]
- Unexpected extreme events   
*Please describe, if any:* [Inadequate mechanisms for addressing extreme events in form of floods and droughts]
- Lack of information and reliable forecasts   
*Please describe, if any:* [Limited climate and water resource data and information]
- Others (*please list and describe, as appropriate*): [fill in]
- (i) Does the joint body or mechanism, or its subsidiary bodies meet regularly?  
 Yes /No   
 If yes, how frequently does it meet?
- More than once per year   
 Once per year   
 Less than once per year
- (j) What are the main achievements with regards to the joint body or mechanism? [Establishment of joint planning and decision making framework on water resources of the basin in form of the Nile Basin Decision support system, regular dialogue among the riparian states on issues regarding transboundary water cooperation]
- (k) Did the joint body or mechanism ever invite a non-riparian coastal State to cooperate?  
 Yes /No   
*If yes, please give details. If no, why not, e.g. are the relevant coastal States also riparian States and therefore already members of the joint body or mechanism?*



---

[The coastal riparian States (Kenya and Tanzania) are already members of the joint body]

4. Have joint objectives, a common strategy, a joint or coordinated management plan or action plan been agreed for the basin, sub-basin, part of a basin or group of basins?

Yes /No

If yes, please provide further details: [10 year Nile Basin strategy with 5 year action plans]

5. How is the transboundary basin, sub-basin, part of a basins or group of basins protected, including the protection of ecosystems, in the context of sustainable and rational water use?

Regulation of urbanization, deforestation, and sand and gravel extraction.

Environmental flow norms, including consideration of levels and seasonality

Water quality protection, e.g. nitrates, pesticides, faecal coliforms, heavy metals

Water-related species and habitats protection

Other measures (please describe): [fill in]

6. (a) Does your country regularly exchange information and data with other riparian States in the basin, sub-basin, part of a basin or group of basins?

Yes /No

(b) If yes, how often:

More than once per year

Once per year

Less than once per year

(c) Please describe how information is exchanged (e.g. in connection with meetings of joint bodies): [Information is requested for by any riparian state and provided through the joint body]

(d) If yes, on what subjects are information and data exchanged?

Environmental conditions

Research activities and application of best available techniques

Emission monitoring data

Planned measures taken to prevent, control or reduce transboundary impacts

Point source pollution sources

Diffuse pollution sources

Existing hydromorphological alterations (dams, etc.)

Flows or water levels (including groundwater levels)

Water abstractions

---

Climatological information

Future planned measures with transboundary impacts, such as infrastructure development

Other subjects (*please list*): [fill in]

Other comments, e.g. spatial coverage of data and information exchange: [Data and information is for any locations in the basin that have transboundary implications]

(e) Is there a shared database or information platform?

Yes /No

(f) Is the database publicly available?

Yes /No

If yes, please provide the web address: [[www.nilebasin.org](http://www.nilebasin.org)]

(g) What are the main difficulties and challenges to data exchange, if applicable?

Frequency of exchanges

Timing of exchanges

Comparability of data and information

Limited spatial coverage

Inadequate resources (technical and/or financial)

Other (*please describe*): [fill in]

Additional comments: [Data and information exchange is mainly focused on projects implemented directly by the Nile Basin Initiative]

(h) What are the main benefits of data exchange on the basin, sub-basin, part of a basin or group of basins? (*please describe*): [Facilitates decision making on transboundary water resources and promotes trust and confidence building among the countries]

7. Do the riparian States carry out joint monitoring in the transboundary basin, sub-basin, part of a basin or group of basins?

Yes /No

(a) If yes, what does the joint monitoring cover?

---

	<i>Hydrological</i>	<i>Ecological</i>	<i>Chemical</i>
Border surface waters	<input type="checkbox"/>	<input type="checkbox"/>	<input type="checkbox"/>
Surface waters in the entire basin	<input type="checkbox"/>	<input type="checkbox"/>	<input type="checkbox"/>
Surface waters on the main watercourse	<input checked="" type="checkbox"/>	<input type="checkbox"/>	<input checked="" type="checkbox"/>
Surface waters in part of the basin please describe [fill in]	<input type="checkbox"/>	<input type="checkbox"/>	<input type="checkbox"/>
Transboundary aquifer(s) (connected or unconnected)	<input type="checkbox"/>	<input type="checkbox"/>	<input type="checkbox"/>

	Hydrological	Ecological	Chemical
Aquifer(s) in the territory of one riparian hydraulically connected to a transboundary river or lake	<input type="checkbox"/>	<input type="checkbox"/>	<input type="checkbox"/>

(b) If joint monitoring is carried out, how is this done?

National monitoring stations connected through a network or common stations



*Please describe:* [Monitoring stations are set up and operated by riparian states]

Joint and agreed methodologies



*Please describe:* [Methodologies for hydrological and water quality data collection are agreed by all riparian states]

Joint sampling



*Please describe:* [fill in]

Common monitoring network



*Please describe:* [Monitoring stations are set up through the joint body although operated by riparian states]

Common agreed parameters



*Please describe:* [The parameters for monitoring are agreed by all riparian states]

(c) Please describe the main achievements regarding joint monitoring, if any: [Improved understanding of the occurrence and distribution of the basin's water resources by riparian states, joint identification of hotspot locations that require close monitoring and management actions, improved capacity building for monitoring among riparian states, improved trust and confidence among riparian states]

(d) Please describe any difficulties experienced with joint monitoring: [Irregular scheduling, limited financial resources, uneven technical capacity among riparian states]

8. Do the riparian States carry out joint assessment of the transboundary basin, sub-basin, part of a basin or group of basins?

Yes /No

*If yes, please provide the date of the last or only assessment, the frequency and scope (e.g., surface waters or groundwaters only, pollution sources, etc.) of the assessment, and assessment methodology applied:* [Joint assessments done for specific tasks as and when needed and through task teams. The latest assessments were on environmental flow, Evapotranspiration and the state of basin]

9. Have the riparian States agreed to use joint water quality standards?

Yes /No

*If yes, what standards have been applied, e.g. international or regional standards (please specify which), or have national standards of the riparian States been applied?* [fill in]

- 
10. What are the measures implemented to prevent or limit the transboundary impact of accidental pollution?
- Notification and communication
- Coordinated or joint early warning or alarm system for accidental water pollution
- Other (*please list*): [fill in]
- No measures
- If not, why not? What difficulties does your country face in putting in place such measures?:* [fill in]
11. What are the measures implemented to prevent or limit the transboundary impact of extreme weather events and climate change?
- Notification and communication
- Coordinated or joint alarm system for floods
- Coordinated or joint alarm system for droughts
- Joint climate change adaptation strategy
- Joint disaster risk reduction strategy
- Other (*please list*): [fill in]
- No measures
- If not, why not? What difficulties does your country face in putting in place such measures?:* [fill in]
12. Are procedures in place for mutual assistance in case of a critical situation?
- Yes /No
- If yes, please provide a brief summary:* [fill in]
13. Are the public or relevant stakeholders involved in transboundary water management in the basin, sub-basin, part of a basin or group of basins?
- Yes /No
- If yes, how? (please tick all applicable)*
- Stakeholders have observer status in a joint body or mechanism
- Stakeholders have an advisory role in the joint body
- Stakeholders have a decision-making role in the joint body
- If yes, please specify the stakeholders for the joint body or mechanism:* [fill in]
- Intergovernmental organizations
- Private sectors organizations or associations
- Water user groups or associations
- Academic or research institutions
- Other non-governmental organizations
- General public

---

Other (please specify): [fill in]

Availability of information to the public

Consultation on planned measures or river basin management plans<sup>4</sup>

Public involvement

Other (*please specify*): [fill in]

---

<sup>4</sup> Or, where applicable, aquifer management plans.

**Please remember to complete section II for each of the transboundary basins, sub-basin, part of a basin or group of basins. Please also remember to attach copies of agreements or arrangements, if any.**

**III. Water management at the national level**

In this section, you are requested to provide general information on water management at the national level as it relates to transboundary waters. Information on specific transboundary basins, sub-basins, part of basins and groups of basins, should be presented in section II and not repeated here.

1. (a) Does your country's national legislation, policies, action plans and strategies refer to measures to prevent, control and reduce any transboundary impact?

Yes /No

*If yes, please briefly describe the main national laws, policies, action plans and strategies [fill in]*

- (b) Does your country's legislation provide for the following principles?

Precautionary principle Yes /No

Polluter pays principle Yes /No

Sustainable development Yes /No

User pays principle Yes /No

*If yes, please briefly describe how these principles are implemented at the national level: [A permits system provides for these principles to be observed]*

- (c) Does your country have a national licensing or permitting system for wastewater discharges and other point source pollution? (e.g., in industry, mining, energy, municipal, wastewater management or other sectors)?

Yes /No

*If yes, for which sectors?*

Industry

Mining

Energy

Municipal

Livestock raising

Aquaculture

Other (please list): [fill in]

*Please briefly describe the licensing or permitting system, indicating whether the system provides for setting emission limits based on best available technology? The permit system involves issuance of waste water discharge permits that is based on emission limits*

*If yes, for which sectors? (please list): [All sectors]*

---

*If not, please explain why not (giving the most important reasons) or provide information if there are plans to introduce a licensing or permitting system: [fill in]*

(d) Are the authorized discharges monitored and controlled?

Yes /No

*If yes, how? (Please tick the ones applicable):*

Monitoring of discharges

Monitoring of physical and chemical impacts on water

Monitoring of ecological impacts on water

Conditions on permits

Inspectorate

Other means (*please list*): [fill in]

*If your country does not have a discharge monitoring system, please explain why not or provide information if there are plans to introduce a discharge monitoring system: [fill in]*

(e) What are the main measures which your country takes to reduce diffuse sources of water pollution on transboundary waters (e.g., from agriculture, transport, forestry or aquaculture)? The measures listed below relate to agriculture, but other sectors may be more significant. Please be sure to include these under "others":

**Legislative measures**

Norm for uses of fertilizers

Norms for uses of manure

Permitting system

Bans on or norms for use of pesticides

Others (*please list*): [fill in]

**Economic and financial measures**

Monetary incentives

Environmental taxes (such as fertilizer taxes)

Others (*please list*): [fill in]

**Agricultural extension services**

**Technical measures**

*Source control measures*

Crop rotation

Tillage control

Winter cover crops

Others (*please list*): [fill in]

*Other measures*

Buffer/filter strips

Wetland reconstruction

---

Sedimentation traps

Chemical measures

Others (*please list*): [fill in]

**Other types of measures**

*If yes, please list:* [fill in]

(f) What are the main measures which your country takes to enhance water resources allocation and use efficiency?

*Please tick as appropriate (not all might be relevant)*

A regulatory system regarding water abstraction

Monitoring and control of abstractions

Water rights are defined

Water allocation priorities are listed

Water-saving technologies

Advanced irrigation techniques

Demand management activities

Other means (*please list*)

(g) Does your country apply the ecosystems approach?

Yes /No

*If yes, please describe how:* [Through a catchment based approach to planning, development and management of natural resources]

(h) Does your country take specific measures to prevent the pollution of groundwaters?

Yes /No

*If yes, please briefly describe the most important measures:* [Protection of recharge and well head protection]

2. Do your national laws require transboundary environmental impact assessment (EIA)?

Yes /No

*If yes, please briefly describe the legislative basis, and any related implementing procedures.* [The basis is the National Environment Act that is operationalized through the Environmental Impact Assessment Guidelines for Uganda]

*If not, do other measures provide for transboundary EIA? [fill in]*

#### IV. Final questions

1. What are the main challenges your country faces in cooperating on transboundary waters?

Differences between national administrative and legal frameworks

Lack of relevant data and information

Difficulties in data and information exchange



- 
- Sectoral fragmentation at the national level
  - Language barrier
  - Resource constraints
  - Environmental pressures, e.g. extreme events
  - Sovereignty concerns

Please list other challenges and/or provide further details: [[inadequate cooperation and collaboration among riparian states](#)]

2. What have been the main achievements in-cooperating on transboundary waters?

- Improved water management
- Enhanced regional integration, i.e. beyond water
- Adoption of cooperative arrangements
- Adoption of joint plans and programmes
- Long-lasting and sustained cooperation
- Financial support for joint activities
- Stronger political will for transboundary water cooperation
- Better knowledge and understanding
- Dispute avoidance
- Stakeholder engagement

Please list other achievements, keys to achieving success, and/or provide concrete examples: [[improved institutional and human capacity for transboundary water management, improved confidence and trust among riparian states](#)]

3. Please indicate which institutions were consulted during the completion of the questionnaire

- Joint body or mechanism
- Other riparian or aquifer countries
- National water management authority
- Environment agency/ authority
- Basin authority (national)
- Local or provincial government
- Geological survey (national)
- Non-water specific ministries, e.g. foreign affairs, finance, forestry and energy
- Civil society organizations
- Water user associations
- Private sector
- Other (please list): [[Members of the national SDG6 task team](#)]

---

Please briefly describe the process by which the questionnaire was completed: [Completion of this questionnaire involved setting up a task team of 6 people at the national level that discussed all the questions together and agreed on the answers to each question. The draft questionnaire was shared with the joint body for cooperation on the Nile (Nile Basin Initiative) and one riparian state for their review and suggestions]

4. If you have any other comments please add them here (*insert comments*): [None]
5. Name and contact details of the person(s) who filled out the questionnaire (*please insert*): [Dr Callist Tindimugaya. Ministry for Water and Environment, Tel: 256772 521413; email: [callist\\_tindimugaya@yahoo.co.uk](mailto:callist_tindimugaya@yahoo.co.uk)]



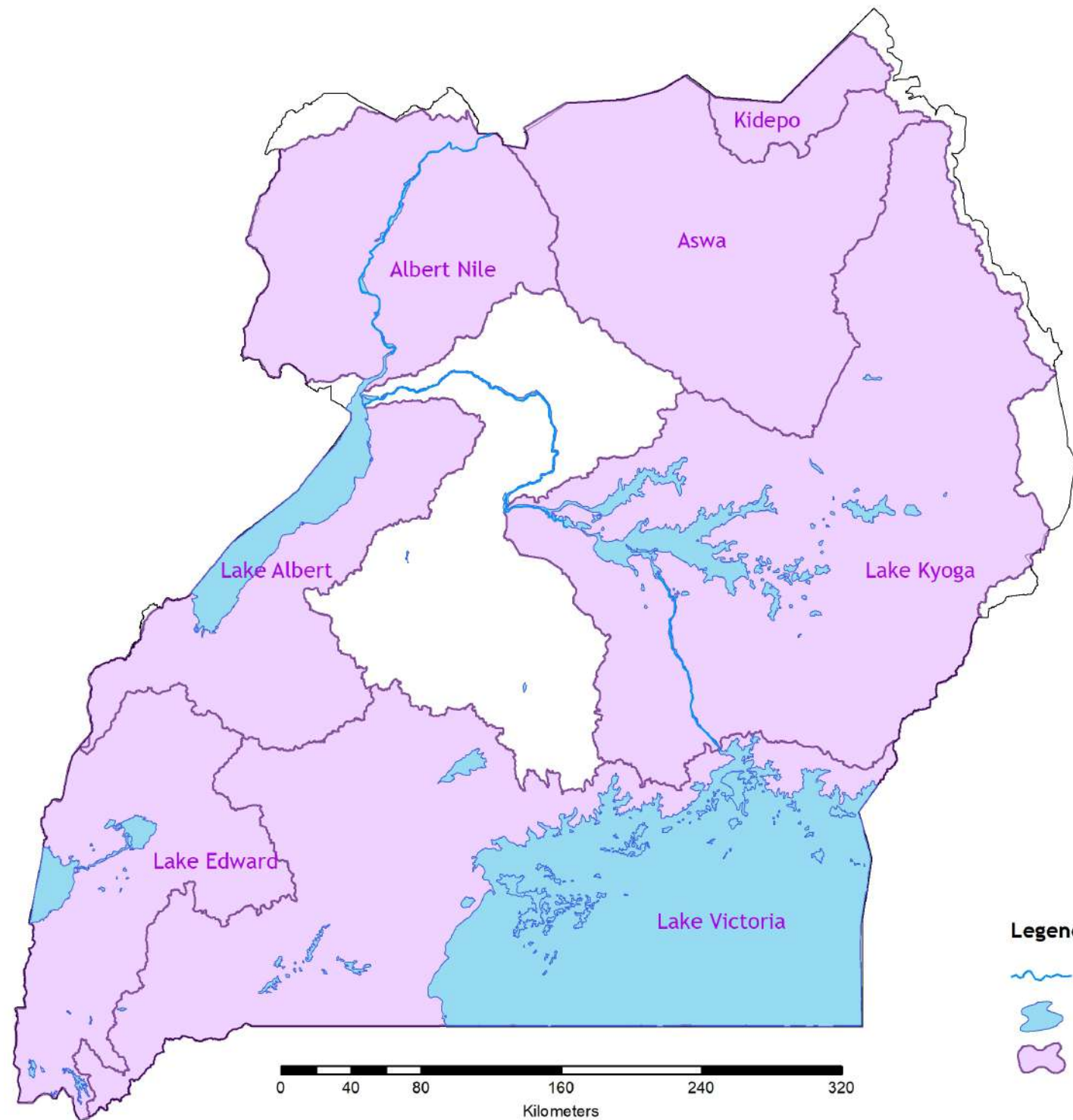
Date: [30 June 2020]

Signature:




Thank you very much for taking the time to complete this report.

---

# MAP OF TRANSBOUNDARY CATCHMENTS IN UGANDA



## Legend

-  River Nile
-  Open water
-  Transboundary Catchment

