

Integrated Approaches to Sustainable Infrastructure



Rowan Palmer, UNEP

2 December 2021

Infrastructure influences all 17 SDGs – Overall 92% of targets

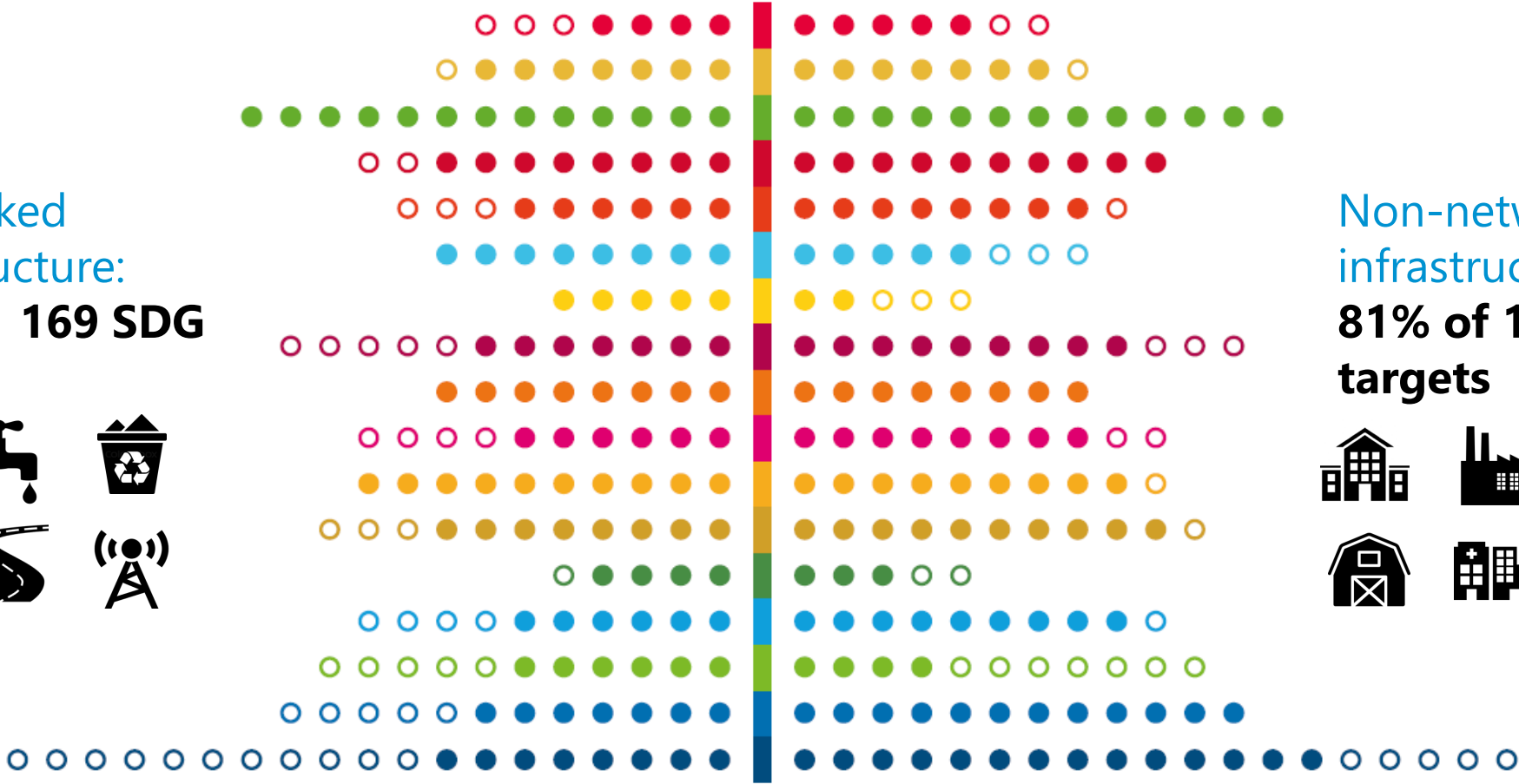
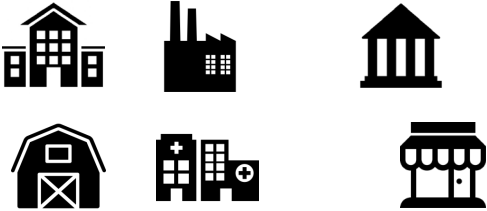
Networked infrastructure influence on targets of the SDGs

Non-networked infrastructure influence on targets of the SDGs

Networked infrastructure:
72% of 169 SDG targets



Non-networked infrastructure:
81% of 169 SDG targets



UNEA Resolution 4/5 on Sustainable Infrastructure

- Member States to “develop and strengthen national and regional systems-level strategic approaches to infrastructure planning”
- UNEP to support Member States to develop sustainable infrastructure as a means of implementing the SDGs
- UNEP to collect and share best practice, building on existing initiatives and identifying knowledge gaps, to assist Member States in promoting and strengthening the sustainability of their infrastructure, and to submit that report to the Environment Assembly at its fifth session



Sustainable Infrastructure Partnership (SIP)



1. Raise awareness

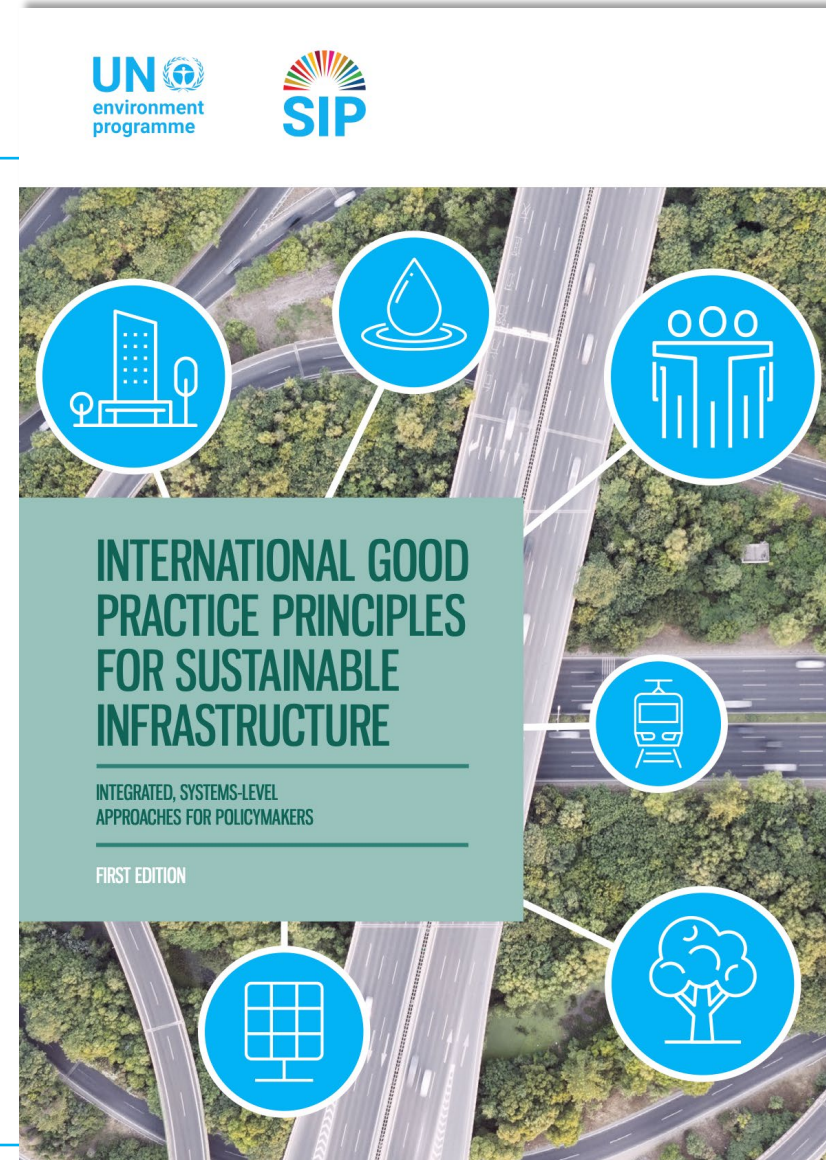
2. Develop streamlined normative and technical guidance

3. Strengthen the technical and institutional capacity of developing countries

Good Practice Principles

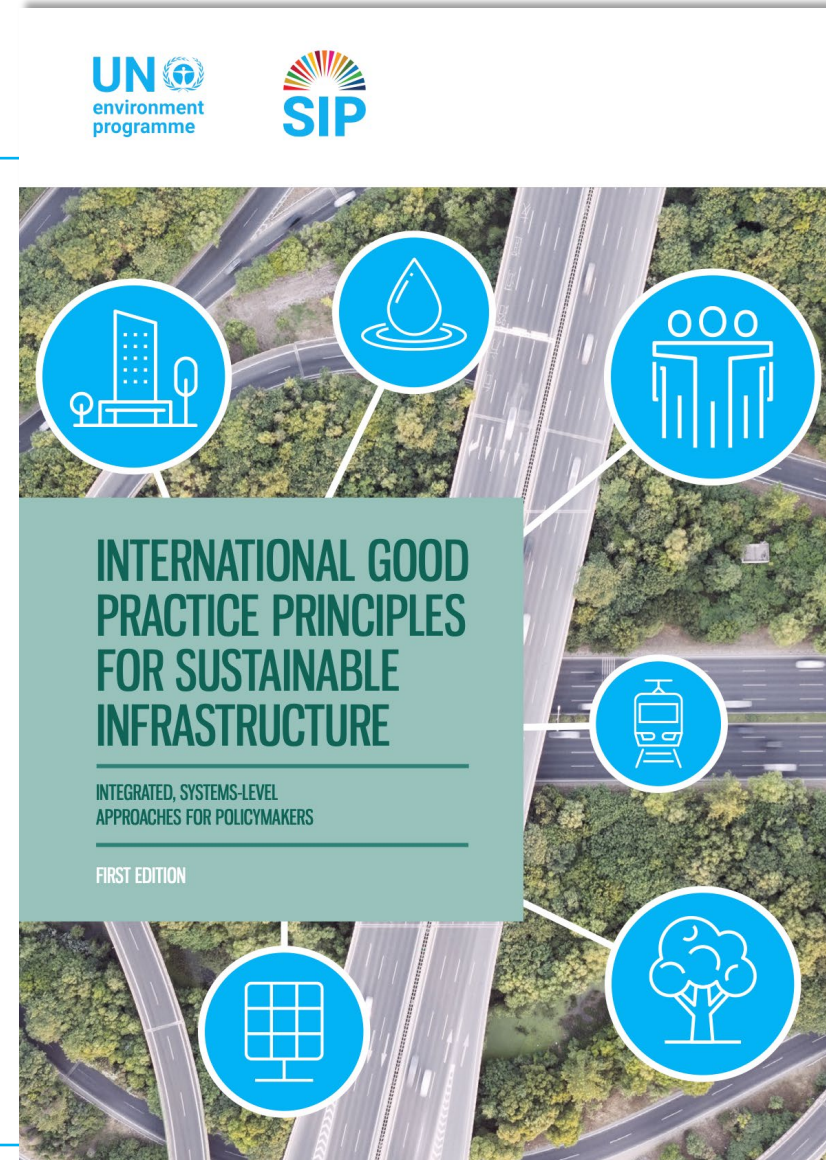
- 10 principles for policymakers
- Needs-based, systems-level, integrated approaches
- Emphasis on the enabling environment and “upstream” interventions

<https://wedocs.unep.org/bitstream/handle/20.500.11822/34853/GPSI.pdf>



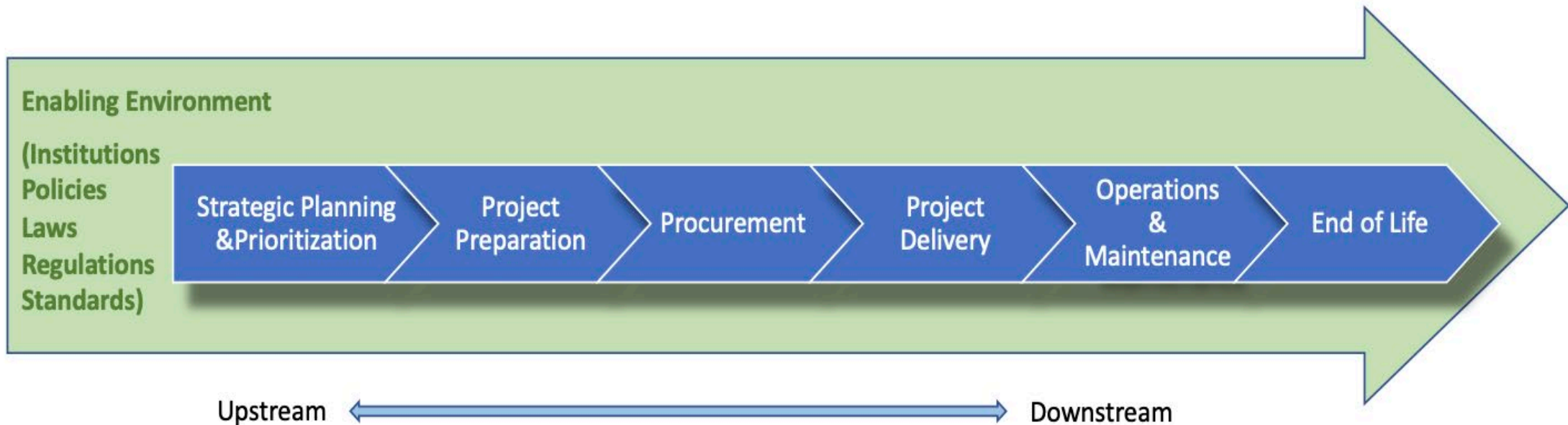
Good Practice Principles

1. Strategic Planning
2. Responsive, resilient, and flexible service provision
3. Comprehensive lifecycle assessment of sustainability
4. Avoiding environmental impacts and investing in natural infrastructure
5. Resource efficiency and circularity
6. Equity, inclusiveness, and empowerment
7. Enhancing economic benefits
8. Fiscal sustainability and innovative financing
9. Transparent, inclusive and participatory decision-making
10. Evidence-based decision-making



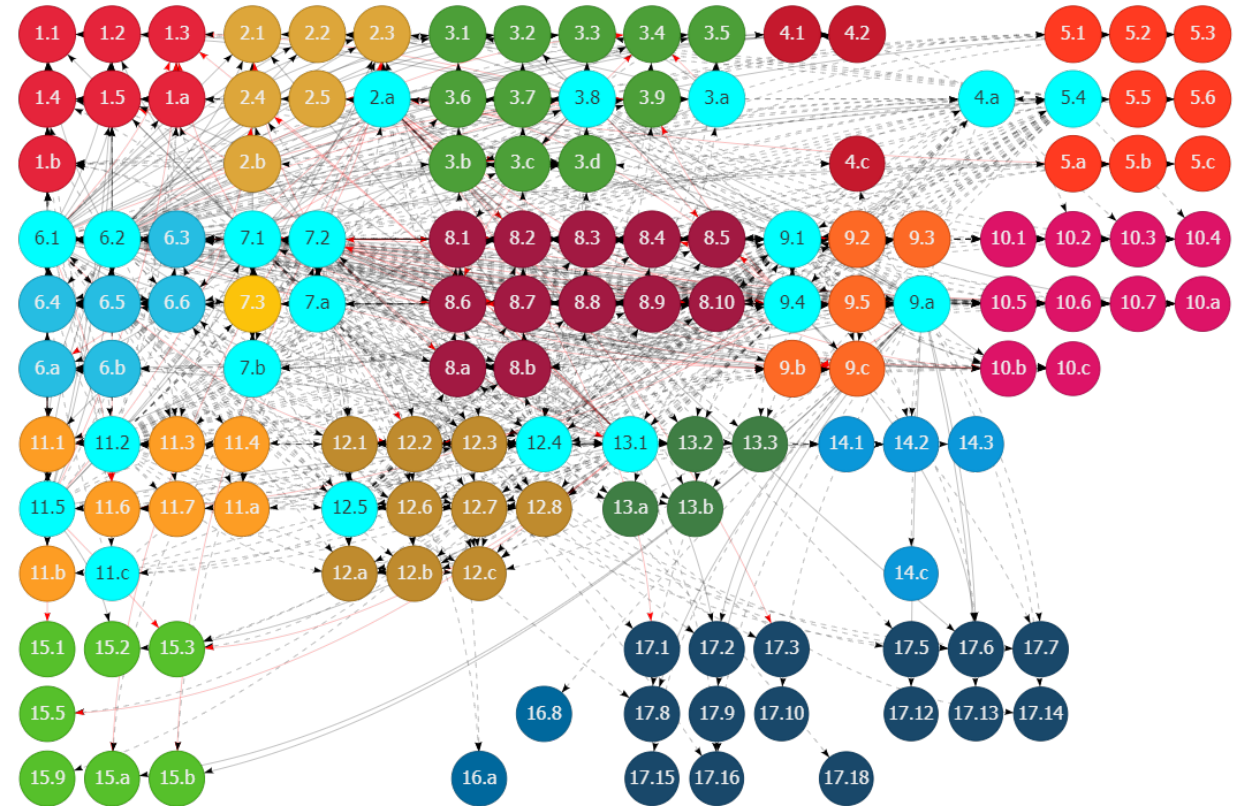
Good Practice Principles

- **Needs-based** = people centered, data and demand driven
- Focused on **systems-level** interventions, emphasis on the early planning phases and enabling environment (institutions, processes, policies)



Good Practice Guidance Framework

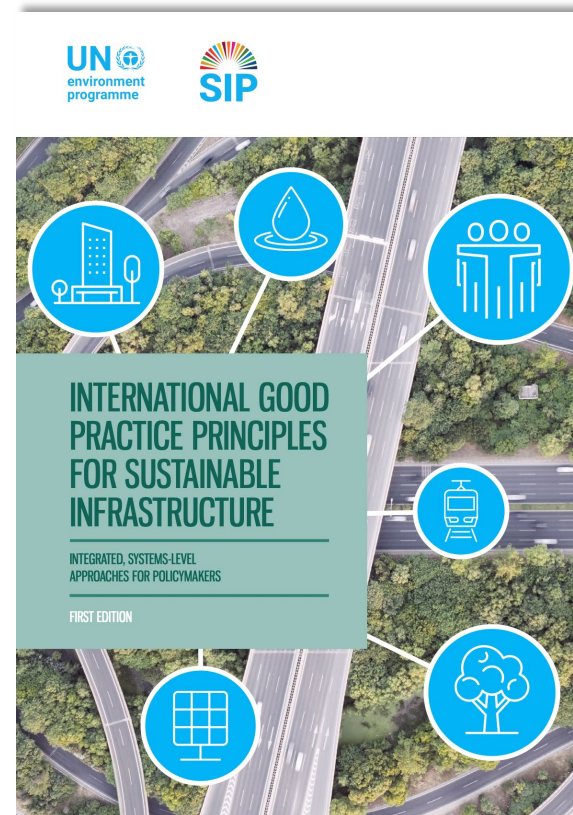
- **Integrated approaches:**
 - Integration of all aspects of sustainability
 - Integration of different infrastructure systems across time and space
 - Nature as infrastructure
 - Integrated governance, policies, and processes
 - Understanding impacts and benefits at the aggregate level



Source: Zhou, et al. (2018). *IGES SDG Interlinkages Analysis and Visualisation Tool (V2.0)*

The Way Forward

1. Promoting uptake and adoption
2. Country support
3. Financing



“There is an urgent need to include sustainable and climate resilient infrastructure as an integral part of green growth to deliver energy, water, and transportation solutions that will facilitate opportunity, connection, and sustainable growth. The International Good Practice Principles for Sustainable Infrastructure provides a very useful guiding framework for governments to lay the groundwork for a future where sustainable infrastructure is the only kind of infrastructure we know.”

Ban Ki Moon, President and Chair of GGGI

“Infrastructure is key to achieving the SDGs and helping countries deliver on the Paris Agreement on climate change. In the face of an environmental emergency, and as countries work to recover from the COVID-19 pandemic, this report provides timely guidance on delivering infrastructure that underpins sustainable development. UNOPS is proud to have supported UNEP in developing this report, which equips decision-makers with the integrated, system-level approaches required to develop sustainable, resilient and inclusive infrastructure.”

Grete Faremo, Executive Director of UNOPS

Thank you



Rowan Palmer, UNEP
rowan.palmer@un.org
