

**Reporting on global SDG indicator 6.5.2**  
**TEMPLATE of the second cycle for reporting**

---

**Content of the template**

The template is divided into four parts:

- Section I - Calculation of SDG indicator 6.5.2
- Section II - Information on each transboundary basin or group of basins
- Section III - General information on transboundary water management at the national level
- Section IV - Final questions

Country name: **Austria**

## I. Calculation of Sustainable Development Goal indicator 6.5.2

### *Methodology*

1. Using the information gathered in section II, the information gathered in this section allows for the calculation of Sustainable Development Goal global indicator 6.5.2, which is defined as the proportion of transboundary basin area with an operational arrangement for water cooperation.
2. The step-by-step monitoring methodology for indicator 6.5.2, developed by UNECE and UNESCO in the framework of UN-Water, should be referred to for details on the necessary data, the definitions and the calculation.<sup>a</sup>
3. The value of the indicator at the national level is derived by adding up the surface area in a country of those transboundary basins (river and lake basins and aquifers) that are covered by an operational arrangement and dividing the area obtained by the aggregate total area in a country of all transboundary basins (both river and lake basins, and aquifers).
4. Transboundary basins are basins of transboundary waters, that is, of any surface waters (notably rivers, lakes) or groundwaters which mark, cross or are located on boundaries between by two or more States. For the purpose of the calculation of this indicator, for a transboundary river or lake, the basin area is determined by the extent of its catchment. For groundwater, the area to be considered is the extent of the aquifer.
5. An “arrangement for water cooperation” is a bilateral or multilateral treaty, convention, agreement or other formal arrangement among riparian countries that provides a framework for cooperation on transboundary water management.
6. For an arrangement to be considered “operational” all the following criteria need to be in place in practice:
  - (a) There is a joint body, joint mechanism or commission (e.g., a river basin organization) for transboundary cooperation (criterion 1);
  - (b) There are regular (at least once per year) formal communications between riparian countries in form of meetings (either at the political or technical level) (criterion 2);
  - (c) Joint objectives, a common strategy, a joint or coordinated management plan, or an action plan have been agreed upon by the riparian countries (criterion 3);
  - (d) There is a regular (at least once per year) exchange of data and information (criterion 4).

### *Calculation of indicator 6.5.2*

7. Please list in the tables below the transboundary basins (rivers and lakes and aquifers) in your country’s territory and provide the following information for each of them:
  - (a) The country/ies with which the basin is shared;
  - (b) The surface area of the basin (the catchment of rivers or lakes and the aquifer in the case of groundwater) within the territory of your country (in square kilometres (km<sup>2</sup>));
  - (c) Whether a map and/or a geographical information system (GIS) shapefile of the basin has been provided;
  - (d) Whether there is an arrangement in force for the basin;
  - (e) The verification of each of the four criteria to assess operability;

---

<sup>a</sup> Available from the UN-Water website: <https://www.sdg6monitoring.org/indicators/target-65/indicators652/> (updated version “2020”).

(f) The surface area of the basin within the territory of your country which is covered by a cooperation arrangement that is operational according to the above criteria.

8. In case an operational arrangement is in place only for a sub-basin or a portion of a basin, please list this sub-basin just after the transboundary basin it is part of. In case there is an operational arrangement for the whole basin, do not list sub-basins in the table below.

Table 1  
**Transboundary river or lake basin (please add rows as needed)**

<i>Name of transboundary river or lake basin/sub-basin</i>	<i>It is a basin or a sub-basin? <sup>b</sup></i>	<i>Countries shared with</i>	<i>Surface area of the basin/sub-basin (in km<sup>2</sup>) within the territory of the country</i>	<i>Map and/or GIS shapefile provided (yes/no)</i>	<i>Covered by an arrangement (entirely, partly, no) (Ref. to questions in sect. II)</i>	<i>Criterion 1 applied (yes/no) (Ref. to questions in sect. II)</i>	<i>Criterion 2 applied (yes/no) (Ref. to questions in sect. II)</i>	<i>Criterion 3 applied (yes/no) (Ref. to questions in sect. II)</i>	<i>Criterion 4 applied (yes/no) (Ref. to questions in sect. II)</i>	<i>Surface area of the basin/sub-basin (in km<sup>2</sup>) covered by an operational arrangement within the territory of the country</i>
Danube	basin	Albania <sup>c</sup> , Bosnia-Herzegovina, Bulgaria, Croatia, Czech Republic, Germany, Hungary, Italy, Macedonia, Moldova, Montenegro, Poland, Romania, Serbia, Slovak Republic, Slovenia, Switzerland, Ukraine	80.565	no	entirely	yes	yes	yes	yes	80.565
Rhine	basin	Belgium (Wallonia) France, Germany, Italy,	2.366	no	entirely	yes	yes	yes	yes	2.366

<sup>b</sup> List sub-basins after the basin they belong to.

<sup>c</sup> No party to ICPDR

<i>Name of transboundary river or lake basin/sub-basin</i>	<i>It is a basin or a sub-basin? <sup>b</sup></i>	<i>Countries shared with</i>	<i>Surface area of the basin/sub-basin (in km<sup>2</sup>) within the territory of the country</i>	<i>Map and/or GIS shapefile provided (yes/no)</i>	<i>Covered by an arrangement (entirely, partly, no) (Ref. to questions in sect. II)</i>	<i>Criterion 1 applied (yes/no) (Ref. to questions in sect. II)</i>	<i>Criterion 2 applied (yes/no) (Ref. to questions in sect. II)</i>	<i>Criterion 3 applied (yes/no) (Ref. to questions in sect. II)</i>	<i>Criterion 4 applied (yes/no) (Ref. to questions in sect. II)</i>	<i>Surface area of the basin/sub-basin (in km<sup>2</sup>) covered by an operational arrangement within the territory of the country</i>
		Lichtenstein, Luxembourg, the Netherlands, Switzerland								
Elbe	basin	Czech Republic, Germany, Poland	920	no	entirely	yes	yes	yes	yes	920
<b>(A) Total surface area of transboundary basins/sub-basins of rivers and lakes covered by operational arrangements within the territory of the country (in km<sup>2</sup>) (do not double count sub-basins)</b>										83.851
<b>(B) Total surface area of transboundary basins of rivers and lakes within the territory of the country (in km<sup>2</sup>) (do not double count sub-basins)</b>			83.851							

Table 2  
**Transboundary aquifers (please add rows as needed)**

<i>Name of the transboundary aquifer</i>	<i>Countries shared with</i>	<i>Surface area of the aquifer<sup>d</sup> (in km<sup>2</sup>) within the territory of the country</i>	<i>Map and/ or GIS shapefile provided (yes/no)</i>	<i>Covered by an aquifer specific arrangement (entirely, partly, no) (Ref. to questions in sect. II)</i>	<i>Covered within an arrangement not specific to the aquifer<sup>e</sup> (entirely, partly, no) (Ref. to questions in sect. II)</i>	<i>Criterion 1 applied (yes/no) (Ref. to questions in sect. II)</i>	<i>Criterion 2 applied (yes/no) (Ref. to questions in sect. II)</i>	<i>Criterion 3 applied (yes/no) (Ref. to questions in sect. II)</i>	<i>Criterion 4 applied (yes/no) (Ref. to questions in sect. II)</i>	<i>Surface area of the aquifer (in km<sup>2</sup>) covered by an operational arrangement within the territory of the country</i>
GK 100018 Heideboden	Slovakia, Hungary	113	yes	no	entirely	yes	yes	yes	yes	113
GK 100021 Parndorfer Platte	Hungary	254	yes	no	entirely	yes	yes	yes	yes	254
GK 100081 Wulkatal	Hungary	381	yes	no	entirely	yes	yes	yes	yes	381
GK 100127 Günstal	Hungary	17	yes	no	entirely	yes	yes	yes	yes	17
GK 100128 Ikvatal	Hungary	165	yes	no	entirely	yes	yes	yes	yes	165
GK 100129 Lafnitztal	Hungary	96	yes	no	entirely	yes	yes	yes	yes	96
GK 100130 Pinkatal	Hungary	81	yes	no	entirely	yes	yes	yes	yes	81
GK 100131 Raabtal	Hungary	114	yes	no	entirely	yes	yes	yes	yes	114

<sup>d</sup> For a transboundary aquifer, the extent is derived from the aquifer system delineation which is commonly done relying on information of the subsurface (notably the extent of geological formations). As a general rule, the delineation of aquifer systems is based on the delineation of the extent of the hydraulically connected water-bearing geological formations. Aquifer systems are three-dimensional objects and the aquifer area taken into account is the projection on the land surface of the system. Ideally, when different aquifer systems not hydraulically connected are vertically superposed, the different relevant projected areas are to be considered separately, unless the different aquifer systems are managed conjunctively.

<sup>e</sup> In the text of the agreement or arrangement or in the practice.

<i>Name of the transboundary aquifer</i>	<i>Countries shared with</i>	<i>Surface area of the aquifer<sup>d</sup> (in km<sup>2</sup>) within the territory of the country</i>	<i>Map and/ or GIS shapefile provided (yes/no)</i>	<i>Covered by an aquifer specific arrangement (entirely, partly, no) (Ref. to questions in sect. II)</i>	<i>Covered within an arrangement not specific to the aquifer<sup>e</sup> (entirely, partly, no) (Ref. to questions in sect. II)</i>	<i>Criterion 1 applied (yes/no) (Ref. to questions in sect. II)</i>	<i>Criterion 2 applied (yes/no) (Ref. to questions in sect. II)</i>	<i>Criterion 3 applied (yes/no) (Ref. to questions in sect. II)</i>	<i>Criterion 4 applied (yes/no) (Ref. to questions in sect. II)</i>	<i>Surface area of the aquifer (in km<sup>2</sup>) covered by an operational arrangement within the territory of the country</i>
GK 100132 Rabnitztal	Hungary	40	yes	no	entirely	yes	yes	yes	yes	40
GK 100134 Seewinkel	Hungary	412	yes	no	entirely	yes	yes	yes	yes	412
GK 100136 Stremtal	Hungary	51	yes	no	entirely	yes	yes	yes	yes	51
GK 100139 Günser Gebirge Umland	Hungary	147	yes	no	entirely	yes	yes	yes	yes	147
GK 100146 Hügelland Rabnitz	Hungary	431	yes	no	entirely	yes	yes	yes	yes	431
GK 100158 TGWK Thermalgrundwasser	Germany	1.650	yes	no	entirely	yes	yes	yes	yes	1.650
GK100162 TGWK Donau Ost - Heideboden	Hungary	72	yes	no	entirely	yes	yes	yes	yes	72
GK 100168 TGWK Steirisches u. Pannonisches Becken	Hungary	2.870	yes	no	entirely	yes	yes	yes	yes	2.870
GK 100181 Hügelland Raab Ost	Hungary	1.091	yes	no	entirely	yes	yes	yes	yes	1.091
GK 100187 Hügelland Raab West	Hungary, Slovenia	1.352	yes	no	entirely	yes	yes	yes	yes	1.352

<i>Name of the transboundary aquifer</i>	<i>Countries shared with</i>	<i>Surface area of the aquifer<sup>d</sup> (in km<sup>2</sup>) within the territory of the country</i>	<i>Map and/ or GIS shapefile provided (yes/no)</i>	<i>Covered by an aquifer specific arrangement (entirely, partly, no) (Ref. to questions in sect. II)</i>	<i>Covered within an arrangement not specific to the aquifer<sup>e</sup> (entirely, partly, no) (Ref. to questions in sect. II)</i>	<i>Criterion 1 applied (yes/no) (Ref. to questions in sect. II)</i>	<i>Criterion 2 applied (yes/no) (Ref. to questions in sect. II)</i>	<i>Criterion 3 applied (yes/no) (Ref. to questions in sect. II)</i>	<i>Criterion 4 applied (yes/no) (Ref. to questions in sect. II)</i>	<i>Surface area of the aquifer (in km<sup>2</sup>) covered by an operational arrangement within the territory of the country</i>
GK 100193 TGWK Rabnitzinzugsgebiet	Hungary	1.885	yes	no	entirely	yes	yes	yes	yes	1.885
GK 100194 Karawanken	Slovenia	217	yes	no	entirely	yes	yes	yes	yes	217
<b>(C)</b> <b>Sub-total: surface area of transboundary aquifers covered by operational arrangements (in km<sup>2</sup>)</b>										11.439
<b>(D)</b> <b>Total surface area of transboundary aquifers (in km<sup>2</sup>)</b>		11.439								



---

**Indicator value for the country****Surface waters:**

Percentage of surface area of transboundary basins of rivers and lakes covered by an operational arrangement:

$$A/B \times 100 = 83.851/83.851 \times 100 = \mathbf{100\%}$$

**Aquifers:**

Percentage of surface area of transboundary aquifers covered by an operational arrangement:

$$C/D \times 100 = 11.439/11.439 \times 100 = \mathbf{100\%}$$

**Sustainable Development Goal indicator 6.5.2:**

Percentage of surface area of transboundary basins covered by an operational arrangement:

$$((A + C)/(B + D)) \times 100 = (83.851 + 11.439)/(83.851 + 11.439) = \mathbf{100\%}$$

**Spatial information**

If a map (or maps) of the transboundary surface water catchments and transboundary aquifers (i.e., “transboundary basins”) is available, please consider attaching them. Ideally, shapefiles of the basin and aquifer delineations that can be viewed in GIS should be sent.

All information about groundwater bodies is available online:

<https://maps.wisa.bmlrt.gv.at/gewaesserbewirtschaftungsplan-2015#>

**Additional information**

If the respondent has comments that clarify assumptions or interpretations made for the calculation, or the level of certainty of the spatial information, please write them here:

---

Does your country have transboundary agreements or arrangements for the protection and/or management of transboundary waters (i.e., rivers, lakes or groundwater), whether bilateral or multilateral?

Yes /No

*If yes, list the bilateral and multilateral agreements or arrangements (listing for each of the countries concerned):*

Multilateral agreements:

- The Convention on Co-operation for the Protection and Sustainable Use of the River Danube (Danube River Protection Convention)<sup>1</sup>
- Convention on the Protection of the Rhine<sup>2</sup>
- Convention on the International Commission for the Protection of the River Elbe<sup>3</sup>
- Agreement for the protection<sup>4</sup> and use<sup>5</sup> of the Lake Constance

Bilateral agreements:

- Agreement between Republic of Austria and Federal Republic of Germany based on Treaty of Regensburg<sup>6</sup>
- Agreements between Republic of Austria and Czech Republic as well as between Austria and Slovak Republic<sup>7</sup>
- Agreement between Republic of Austria and Republic of Hungary<sup>8</sup>
- Agreement between Republic of Austria and Republic of Slovenia for the River Mur<sup>9</sup> and the River Drau<sup>10</sup>
- Agreement between the Republic of Austria and Suisse Confederation on regulation of River Rhine<sup>11</sup> and the use of the river Inn<sup>12</sup>
- Agreement between the Republic of Austria and Principality of Liechtenstein on the regulation of the River Rhine<sup>13</sup>

---

<sup>1</sup> BGBl. III Nr. 139/1998

<sup>2</sup> <http://www.iksr.org/index.php?id=156&ignoreMobile=1>

<sup>3</sup> <http://www.ikse-mkol.org/index.php?id=35>

<sup>4</sup> BGBl. Nr. 289/1961

<sup>5</sup> BGBl. Nr. 396/1967

<sup>6</sup> BGBl. Nr. 17/1991

<sup>7</sup> BGBl. Nr. 106/1970 idF BGBl. III Nr. 123/1997 (Ziffer 14)

<sup>8</sup> BGBl. Nr. 225/1959

<sup>9</sup> BGBl. Nr. 119/1956 idF BGBl. Nr. 714/1993 (Ziffer 10, lit b 1.)

<sup>10</sup> Regierungsübereinkommen vom 25.5.1954 zwischen Österreich und Jugoslawien über wasserwirtschaftliche Fragen an der Drau idF BGBl. Nr. 715/1993 (Ziffer 1 auf Seite 6039)

<sup>11</sup> BGBl. Nr. 178/1955

<sup>12</sup> BGBl. III Nr. 99/2008

<sup>13</sup> BGBl. Nr.333/1931

---

**II. Questions for each transboundary basin, sub-basin, part of a basin, or group of basins (river, lake or aquifer)**

**Bilateral Commission Austria-Slovakia**

**Name of the transboundary basin,-sub-basin, part of a basin or group of basins:**

**Danube river basin, Morava river basin**

List of the riparian States: Austria, Slovakia

**In the case of an aquifer, what is the nature of the aquifer and its relation with the river or lake basin:**

Unconfined aquifer connected to a river or lake

Unconfined aquifer with no or limited relation with surface water

Confined aquifer connected to surface water

Confined aquifer with no or limited relation with surface water

Other

Please describe: [fill in]

Unknown

**Percentage of your country's territory within the basin, sub-basin, part of a basin or group of basins: 59,2%**

1. Is there one or more transboundary (bilateral or multilateral) agreement(s) or arrangement(s) on this basin, sub-basin, part of a basin or group of basins?

One or more agreements or arrangements exist and are in force

Agreement or arrangement developed but not in force

Agreement or arrangement developed, but not in force for all riparians

*Please insert the name of the agreement(s) or arrangement(s)*

1970 Treaty between the Czechoslovak Socialist Republic and the Republic of Austria on Water Management Issues on Transboundary Waters

Agreement or arrangement is under development

No agreement or arrangement

*If there is no agreement or arrangement or it is not in force, please explain briefly why not and provide information on any plans to address the situation: [fill in]*

**If there is no agreement or arrangement and no joint body or mechanism for the transboundary basin, sub-basin, part of a basin or group of basins then jump to question 4; if there is no agreement or arrangement, but a joint body or mechanism then go to question 3.**

**Questions 2 and 3 to be completed for each bilateral or multilateral agreement or arrangement in force in the transboundary basin, sub-basin, part of a basin or group of basins.**

2. (a) Does this agreement or arrangement specify the area subject to cooperation?

Yes /No

---

If yes, does it cover the entire basin or group of basins and all riparian States?

Yes /No

Additional explanations?

As agreed in Treaty between Czechoslovak Socialistic Republic and Austrian Republic on adjustment of water management questions on boundary waters, boundary waters are:

- sections of flows through which state borders run between Contracting States,
- waters intersecting the state border and waters adjacent to the state border, if the water management measures implemented in the territory of one Contracting State would significantly negatively affect the water conditions in the territory of the other Contracting State.

Practically all bilateral relevant issues within the Austrian and Slovak subcatchment area can be addressed.

Or, if the agreement or arrangement relates to a sub-basin, does it cover the entire sub-basin?

Yes /No

Additional explanations? [fill in]

Which States (including your own) are bound by the agreement or arrangement?  
(Please list):

Austria, Slovakia

(b) If the agreement or arrangement relates to a river or lake basin or sub-basin, does it also cover aquifers?

Yes /No

If yes, please list the aquifers covered by the agreement or arrangement:

There are no aquifers covered by the agreement, but the voluntary exchange exists.

(c) What is the sectoral scope of the agreement or arrangement?

- |                               |                                     |
|-------------------------------|-------------------------------------|
| All water uses                | <input checked="" type="checkbox"/> |
| A single water use or sector  | <input type="checkbox"/>            |
| Several water uses or sectors | <input type="checkbox"/>            |

*If one or several water uses or sectors, please list*

Fishery and energy business hydro-electric power utilization – power generation is excluded

**Water uses or sectors**

- |   |                                     |
|---|-------------------------------------|
| Industry                                  | <input checked="" type="checkbox"/> |
| Agriculture                               | <input checked="" type="checkbox"/> |
| Transport (e.g., navigation)              | <input checked="" type="checkbox"/> |
| Households                                | <input checked="" type="checkbox"/> |
| Energy: hydropower and other energy types | <input checked="" type="checkbox"/> |

- 
- Fisheries
  - Tourism
  - Nature protection
  - Other (*please list*): [fill in]

(d) What topics or subjects of cooperation are included in the agreement or arrangement?

**Procedural and institutional issues**

- Dispute and conflict prevention and resolution
- Institutional cooperation (joint bodies)
- Consultation on planned measures
- Mutual assistance

**Topics of cooperation**

- Joint vision and management objectives
- Joint significant water management issues
- Navigation
- Human health
- Environmental protection (ecosystem)
- Water quality
- Water quantity or allocation
- Cooperation in addressing floods
- Cooperation in addressing droughts
- Climate change adaptation

**Monitoring and exchange**

- Joint assessments
- Data collection and exchange
- Joint monitoring
- Maintenance of joint pollution inventories
- Elaboration of joint water quality objectives
- Common early warning and alarm procedures
- Exchange of experience between riparian States
- Exchange of information on planned measures

**Joint planning and management**

- Development of joint regulations on specific topics
- Development of international or joint river, lake or aquifer basin management or action plans
- Management of shared infrastructure

---

Development of shared infrastructure

Other (*please list*):

coordination of national WFD planning

(e) What are the main difficulties and challenges that your country faces with the agreement or arrangement and its implementation, if any?

Aligning implementation of agreement or arrangement with national laws, policies and programmes

Aligning implementation of agreement or arrangement with regional laws, policies and programmes

Lack of financial resources

Insufficient human capacity

Insufficient technical capacity

Tense diplomatic relations

Non-participation of certain riparian countries in the agreement

No significant difficulties

Other (*please describe*): [fill in]

(f) What are the main achievements in implementing the agreement or arrangement and what were the keys to achieving such success?

Approved methodologies, principles of cooperation, guidelines and directives:

- Guidelines for the design and technical and financial control of water management measures at the Slovak-Austrian boundary waters;
- List of representative unit prices;
- Principles for the provision of motor boats for common measurements;
- Guideline for reporting and warning service on Slovak-Austrian border waters;
- Common methodology for water status monitoring in the Slovak-Austrian boundary waters;
- Common methodology for hydrometeorology on the Slovak-Austrian boundary waters.

(g) Please attach a copy of the agreement or arrangement or provide the web address of the document (*please attach document or insert web address, if applicable*):

<https://www.ris.bka.gv.at/GeltendeFassung.wxe?Abfrage=Bundesnormen&Gesetzesnummer=10010343>

3. Is your country a member of any joint body or mechanism for this agreement or arrangement?

Yes /No

*If no, why not? (please explain):* [fill in]

#### **Where there is a joint body or mechanism**

(a) If there is a joint body or mechanism, which kind of joint body or mechanism (*please tick one*)?

---

Plenipotentiaries

Bilateral commission

Basin or similar commission

Expert group meeting or meeting of national focal points

Other (*please describe*): [fill in]

(b) Does the joint body or mechanism cover the entire transboundary basin, sub-basin, part of a basin or group of basins?

Yes /No

(c) Which States (including your own) are members of the joint body or mechanism? (*Please list*): Austria, Slovakia

(d) Are there any riparian States that are not members of the joint body or mechanism? (*please list*): [fill in]

(e) If not all riparian States are members of the joint body or mechanism how does the joint body or mechanism cooperate with them?

No cooperation

They have observer status

Other (*please describe*):

own bilateral agreements; cooperation under the umbrella of ICPDR, trilateral meetings between Austria, the Czech Republic and Slovakia

(f) Does the joint body or mechanism have any of the following features (*please tick the ones applicable*)?

A secretariat

*If the secretariat is a permanent one, is it a joint secretariat or does each country host its own secretariat? (Please describe):* [fill in]

A subsidiary body or bodies

*Please list (e.g., working groups on specific topics):*

- Working Group for Technical, Financial and Navigation Issues;
- Working Group for Quality of Border Waters;
- Working Group for Hydrology;
- Working Group for Legal Affairs;
- Working Group for International issues, Ecology and Flood Protection;
- Working Subgroup of experts for the harmonization of the Slovak River Basin Management Plan and the Austrian National Water Management Plan in the Area of Boundary Waters
- Working Subgroup for monitoring

Other features (*please list*): [fill in]

(g) What are the tasks and activities of this joint body or mechanism?<sup>14</sup>

---

<sup>14</sup> This may include tasks according to the agreement or tasks added by the joint body, or its subsidiaries. Both tasks which joint bodies coordinate and tasks which they implement should be included.

---

Identification of pollution sources	<input type="checkbox"/>
Data collection and exchange	<input checked="" type="checkbox"/>
Joint monitoring	<input checked="" type="checkbox"/>
Maintenance of joint pollution inventories	<input type="checkbox"/>
Setting emission limits	<input type="checkbox"/>
Elaboration of joint water quality objectives	<input checked="" type="checkbox"/>
Management and prevention of flood or drought risks	<input checked="" type="checkbox"/>
Preparedness for extreme events, e.g., common early warning and alarm procedures	<input checked="" type="checkbox"/>
Surveillance and early warning of water related disease	<input type="checkbox"/>
Water allocation and/or flow regulation	<input checked="" type="checkbox"/>
Policy development	<input type="checkbox"/>
Control of implementation	<input checked="" type="checkbox"/>
Exchange of experience between riparian States	<input checked="" type="checkbox"/>
Exchange of information on existing and planned uses of water and related installations	<input checked="" type="checkbox"/>
Settling of differences and conflicts	<input checked="" type="checkbox"/>
Consultations on planned measures	<input checked="" type="checkbox"/>
Exchange of information on best available technology	<input type="checkbox"/>
Participation in transboundary EIA	<input checked="" type="checkbox"/>
Development of river, lake or aquifer basin management or action plans	<input checked="" type="checkbox"/>
Management of shared infrastructure	<input checked="" type="checkbox"/>
Addressing hydromorphological alterations	<input checked="" type="checkbox"/>
Climate change adaptation	<input type="checkbox"/>
Joint communication strategy	<input type="checkbox"/>
Basin-wide or joint public participation and consultation of, for example, basin management plans	<input checked="" type="checkbox"/>
Joint resources to support transboundary cooperation	<input checked="" type="checkbox"/>
Capacity-building	<input type="checkbox"/>

Any other tasks (*please list*):

National river basin management plans are coordinated using the joint bodies

Water management questions and measures related to:

- river regime changes;
- water course regulation;
- dams against high-water construction;
- protection against high-water and ice run;
- meliorations;



- water supply;
- keeping of water quality;
- utilization of water energy;
- bridges and ferries as well as navigation matters;
- maintenance of navigability and marking of waterway;
- removing barriers to navigation and
- navigation reporting.

(h) What are the main difficulties and challenges that your country faces with the operation of the joint body or mechanism, if any?

Governance issues

*Please describe, if any:* [fill in]

Unexpected planning delays

*Please describe, if any:* [fill in]

Lack of resources

*Please describe, if true:* [fill in]

Lack of mechanism for implementing measures

*Please describe, if true:* [fill in]

Lack of effective measures

*Please describe, if true:* [fill in]

Unexpected extreme events

*Please describe, if any:* [fill in]

Lack of information and reliable forecasts

*Please describe, if any:* [fill in]

Others (*please list and describe, as appropriate*): [fill in]

(i) Does the joint body or mechanism, or its subsidiary bodies meet regularly?

Yes /No

If yes, how frequently does it meet?

More than once per year

Once per year

Less than once per year

(j) What are the main achievements with regards to the joint body or mechanism?

A) Adoption of common conclusions on:

- common procedures, guidelines and principles of cooperation;
- implementation of national and joint works on transboundary waters;
- accounting of implemented national and joint measures;
- planning, implementation and operation of the measures in the area under Treaty such as technical issues, flood protection, water quality protection, hydrology

B) information exchange

---

(k) Did the joint body or mechanism ever invite a non-riparian coastal State to cooperate?

Yes /No

*If yes, please give details. If no, why not, e.g. are the relevant coastal States also riparian States and therefore already members of the joint body or mechanism?*

Both countries are landlock countries with no coastal states involved

4. Have joint objectives, a common strategy, a joint or coordinated management plan or action plan been agreed for the basin, sub-basin, part of a basin or group of basins?

Yes /No

*If yes, please provide further details:*

Ongoing exchange information on the preparation of national River Basin Management Plans and Flood Risk Management Plans through the relevant Working group - Working Subgroup of experts for the harmonization of the Slovak River Basin Management Plan and the Austrian National Water Management Plan in the Area of Boundary Waters

5. How is the transboundary basin, sub-basin, part of a basins or group of basins protected, including the protection of ecosystems, in the context of sustainable and rational water use?

Regulation of urbanization, deforestation, and sand and gravel extraction.

Environmental flow norms, including consideration of levels and seasonality

Water quality protection, e.g. nitrates, pesticides, faecal coliforms, heavy metals

Water-related species and habitats protection

Other measures *(please describe)*:

Under bilateral Treaty between Czechoslovak Socialistic Republic and Austrian Republic on adjustment of water management questions on boundary waters

6. (a) Does your country regularly exchange information and data with other riparian States in the basin, sub-basin, part of a basin or group of basins?

Yes /No

(b) If yes, how often:

More than once per year

Once per year

Less than once per year

(c) Please describe how information is exchanged (e.g. in connection with meetings of joint bodies):

- annual session of Joint bilateral Slovak-Austrian Commission for transboundary waters
- extraordinary meeting - Plenipotentiaries of Joint bilateral Slovak-Austrian Commission for transboundary waters
- mail form communication of Plenipotentiaries of Joint bilateral Slovak-Austrian Commission for transboundary waters

- operational communication (phone, e-mail) of Plenipotentiaries of Joint bilateral Slovak-Austrian Commission for transboundary waters
- meeting of secretaries of Joint bilateral Slovak-Austrian Commission for transboundary waters
- meetings of working groups under the bilateral agreement (usually two times per year)
- operational communication (phone, mail, e-mail) of Heads of relevant working groups established in the frame of Joint bilateral Slovak-Austrian Commission for transboundary waters
- operational exchange information by joint principles and procedures of cooperation adopted in the area under bilateral Treaty between Czechoslovak Socialistic Republic and Austrian Republic on adjustment of water management questions on boundary waters refers to transboundary waters

(d) If yes, on what subjects are information and data exchanged?

- |  |                                     |
|--|-------------------------------------|
| Environmental conditions   | <input checked="" type="checkbox"/> |
| Research activities and application of best available techniques                       | <input type="checkbox"/>            |
| Emission monitoring data   | <input checked="" type="checkbox"/> |
| Planned measures taken to prevent, control or reduce transboundary impacts             | <input checked="" type="checkbox"/> |
| Point source pollution sources   | <input checked="" type="checkbox"/> |
| Diffuse pollution sources  | <input checked="" type="checkbox"/> |
| Existing hydromorphological alterations (dams, etc.)                                   | <input checked="" type="checkbox"/> |
| Flows or water levels (including groundwater levels)                                   | <input checked="" type="checkbox"/> |
| Water abstractions   | <input checked="" type="checkbox"/> |
| Climatological information   | <input type="checkbox"/>            |
| Future planned measures with transboundary impacts, such as infrastructure development | <input checked="" type="checkbox"/> |

Other subjects (*please list*):

Within bilateral Treaty between Czechoslovak Socialistic Republic and Austrian Republic on adjustment of water management questions on boundary waters and other relevant adopted documents

Other comments, e.g. spatial coverage of data and information exchange:

spatial data (data and maps): <https://www.danubegis.org/>

(e) Is there a shared database or information platform?

Yes /No

(f) Is the database publicly available?

Yes /No

*If yes, please provide the web address: [fill in]*

(g) What are the main difficulties and challenges to data exchange, if applicable?

Frequency of exchanges

- Timing of exchanges
- Comparability of data and information
- Limited spatial coverage
- Inadequate resources (technical and/or financial)

Other (*please describe*): [fill in]

Additional comments: [fill in]

(h) What are the main benefits of data exchange on the basin, sub-basin, part of a basin or group of basins? (*please describe*):

- Better consolidation and comparison of data monitored and assessed
- usability for planning, knowledge on available resources capacities

7. Do the riparian States carry out joint monitoring in the transboundary basin, sub-basin, part of a basin or group of basins?

Yes /No

(a) If yes, what does the joint monitoring cover?

	<i>Hydrological</i>	<i>Ecological</i>	<i>Chemical</i>
Border surface waters	<input checked="" type="checkbox"/>	<input checked="" type="checkbox"/>	<input checked="" type="checkbox"/>
Surface waters in the entire basin	<input type="checkbox"/>	<input type="checkbox"/>	<input type="checkbox"/>
Surface waters on the main watercourse	<input type="checkbox"/>	<input type="checkbox"/>	<input type="checkbox"/>
Surface waters in part of the basin please describe [fill in]	<input type="checkbox"/>	<input type="checkbox"/>	<input type="checkbox"/>
Transboundary aquifer(s) (connected or unconnected)	<input checked="" type="checkbox"/>	<input type="checkbox"/>	<input checked="" type="checkbox"/>
Aquifer(s) in the territory of one riparian hydraulically connected to a transboundary river or lake	<input type="checkbox"/>	<input type="checkbox"/>	<input type="checkbox"/>

(b) If joint monitoring is carried out, how is this done?

National monitoring stations connected through a network or common stations

*Please describe:* There are no joint stations, each country established gauging stations at its territory. However, there are regular joint hydrometry measurements in agreed profiles.

Joint and agreed methodologies

*Please describe:* There are no joint measurement methods, however, both countries are obliged to follow the EU WFD and recommended guidelines.

Joint sampling

*Please describe:* Exchange of monitoring results on regular basis.

Common monitoring network

---

*Please describe:* [fill in]

Common agreed parameters



*Please describe:* joint Principles and Rules adopted under bilateral Treaty between Czechoslovak Socialist Republic and Austrian Republic on adjustment of water management questions on boundary waters implemented by Group OV

(c) Please describe the main achievements regarding joint monitoring, if any:

Continuous reporting and information exchange. As a result of the monitoring potential contaminations can be detected in time for intervention.

(d) Please describe any difficulties experienced with joint monitoring:

differences in National methodologies and standards

8. Do the riparian States carry out joint assessment of the transboundary basin, sub-basin, part of a basin or group of basins?

Yes /No

*If yes, please provide the date of the last or only assessment, the frequency and scope (e.g., surface waters or groundwaters only, pollution sources, etc.) of the assessment, and assessment methodology applied:*

During the regular meeting of the sub-committees twice a year Scope: hydrological data, discharge, flow, surface water quality, data regarding flood, excess water and ice flood management

9. Have the riparian States agreed to use joint water quality standards?

Yes /No

*If yes, what standards have been applied, e.g. international or regional standards (please specify which), or have national standards of the riparian States been applied?*

according to the Water Framework Directive

10. What are the measures implemented to prevent or limit the transboundary impact of accidental pollution?

Notification and communication



Coordinated or joint early warning or alarm system for accidental water pollution



Other (*please list*): [fill in]

No measures



*If not, why not? What difficulties does your country face in putting in place such measures?:* [fill in]

11. What are the measures implemented to prevent or limit the transboundary impact of extreme weather events and climate change?

Notification and communication



Coordinated or joint alarm system for floods



Coordinated or joint alarm system for droughts



Joint climate change adaptation strategy



---

Joint disaster risk reduction strategy

Other (*please list*): [fill in]

No measures

*If not, why not? What difficulties does your country face in putting in place such measures?:* [fill in]

12. Are procedures in place for mutual assistance in case of a critical situation?

Yes /No

*If yes, please provide a brief summary:*

In case of emergency, the parties provide immediate assistance to each other in the scope of joint Principles, Procedures and Rules of relevant working groups cooperation

13. Are the public or relevant stakeholders involved in transboundary water management in the basin, sub-basin, part of a basin or group of basins?

Yes /No

*If yes, how? (please tick all applicable)*

Stakeholders have observer status in a joint body or mechanism

Stakeholders have an advisory role in the joint body

Stakeholders have a decision-making role in the joint body

*If yes, please specify the stakeholders for the joint body or mechanism:*  
[fill in]

Intergovernmental organizations

Private sectors organizations or associations

Water user groups or associations

Academic or research institutions

Other non-governmental organizations

General public

Other (*please specify*): [fill in]

Availability of information to the public

Consultation on planned measures or river basin management plans<sup>15</sup>

Public involvement

Other (*please specify*):

o Public participation EU- WFD and EU FD

o stakeholder involvement through ICPDR

---

<sup>15</sup> Or, where applicable, aquifer management plans.

---

**Bilateral Commission Austria-Czech Republic**

**Name of the transboundary basin,-sub-basin, part of a basin or group of basins:**

**Vltava/Moldau River Basin and Morava/March River Basin**

List of the riparian States:

**Austria, Czech Republic**

**In the case of an aquifer, what is the nature of the aquifer and its relation with the river or lake basin:**

- Unconfined aquifer connected to a river or lake
- Unconfined aquifer with no or limited relation with surface water
- Confined aquifer connected to surface water
- Confined aquifer with no or limited relation with surface water
- Other
- Please describe: [fill in]
- Unknown

**Percentage of your country's territory within the basin, sub-basin, part of a basin or group of basins: 3.8%**

1. Is there one or more transboundary (bilateral or multilateral) agreement(s) or arrangement(s) on this basin, sub-basin, part of a basin or group of basins?

- One or more agreements or arrangements exist and are in force
- Agreement or arrangement developed but not in force
- Agreement or arrangement developed, but not in force for all riparians

*Please insert the name of the agreement(s) or arrangement(s)*

1970 Treaty between the Czechoslovak Socialist Republic and the Republic of Austria on Water Management Issues on Transboundary Waters

- Agreement or arrangement is under development
- No agreement or arrangement

*If there is no agreement or arrangement or it is not in force, please explain briefly why not and provide information on any plans to address the situation: [fill in]*

**If there is no agreement or arrangement and no joint body or mechanism for the transboundary basin, sub-basin, part of a basin or group of basins then jump to question 4; if there is no agreement or arrangement, but a joint body or mechanism then go to question 3.**

**Questions 2 and 3 to be completed for each bilateral or multilateral agreement or arrangement in force in the transboundary basin, sub-basin, part of a basin or group of basins.**

2. (a) Does this agreement or arrangement specify the area subject to cooperation?

Yes /No

If yes, does it cover the entire basin or group of basins and all riparian States?

Yes /No

Additional explanations?

This treaty covers issues of water management and measures at border waters as are:

- Ranges of waters, where the state border of the states of the treaty lies within them
- Waters crossing the State Border or neighbouring the state border as far as water management measures carried out on the territory of on state of the treaty would influence significantly negatively the state of the water on the territory of the other state of the treaty

Practically all bilateral relevant issues within the Austrian and Czech subcatchment area of Vltava/Moldau, Lužnice/Lainsitz, Dyje/Thaya and Morava/March can be addressed.

Or, if the agreement or arrangement relates to a sub-basin, does it cover the entire sub-basin?

Yes /No

Additional explanations? [fill in]

Which States (including your own) are bound by the agreement or arrangement?  
(Please list): Austria, Czech Republic

(b) If the agreement or arrangement relates to a river or lake basin or sub-basin, does it also cover aquifers?

Yes /No

If yes, please list the aquifers covered by the agreement or arrangement:

Aquifers in the Vltava river basin and Morava river basin

Austrian part of	Groundwater body	Area covered [km <sup>2</sup> ]
Vltava river basin	GK100079 Böhmsche Masse [Elbe]	920,17
Morava river basin	GK100094 Böhmsche Masse [March]	1366,80
	GK100095 Weinviertel [March]	2008

(c) What is the sectoral scope of the agreement or arrangement?

All water uses

A single water use or sector

Several water uses or sectors

*If one or several water uses or sectors, please list: (fishery and energy business hydro-electric power utilization – power generation are excluded)*

**Water uses or sectors**

Industry

Agriculture



- 
- Transport (e.g., navigation)
  - Households
  - Energy: hydropower and other energy types
  - Fisheries
  - Tourism
  - Nature protection
  - Other (*please list*): [fill in]

(d) What topics or subjects of cooperation are included in the agreement or arrangement?

**Procedural and institutional issues**

- Dispute and conflict prevention and resolution
- Institutional cooperation (joint bodies)
- Consultation on planned measures
- Mutual assistance

**Topics of cooperation**

- Joint vision and management objectives
- Joint significant water management issues
- Navigation
- Human health
- Environmental protection (ecosystem)
- Water quality
- Water quantity or allocation
- Cooperation in addressing floods
- Cooperation in addressing droughts
- Climate change adaptation

**Monitoring and exchange**

- Joint assessments
- Data collection and exchange
- Joint monitoring
- Maintenance of joint pollution inventories
- Elaboration of joint water quality objectives
- Common early warning and alarm procedures
- Exchange of experience between riparian States
- Exchange of information on planned measures

**Joint planning and management**

- Development of joint regulations on specific topics

---

Development of international or joint river, lake or aquifer basin management or action plans

Management of shared infrastructure

Development of shared infrastructure

Other (*please list*):

coordination of national WFD planning

(e) What are the main difficulties and challenges that your country faces with the agreement or arrangement and its implementation, if any?

Aligning implementation of agreement or arrangement with national laws, policies and programmes

Aligning implementation of agreement or arrangement with regional laws, policies and programmes

Lack of financial resources

Insufficient human capacity

Insufficient technical capacity

Tense diplomatic relations

Non-participation of certain riparian countries in the agreement

No significant difficulties

Other (*please describe*): [fill in]

(f) What are the main achievements in implementing the agreement or arrangement and what were the keys to achieving such success?

Long-term cooperation and communication, exchange of information and experiences, common activities at different levels, political commitment

(g) Please attach a copy of the agreement or arrangement or provide the web address of the document (*please attach document or insert web address, if applicable*):

<https://www.ris.bka.gv.at/GeltendeFassung.wxe?Abfrage=Bundesnormen&Gesetzesnummer=10010343>

[http://www.mzp.cz/C1257458002F0DC7/cz/rakousko\\_dokument/\\$FILE/OOV-smlouva\\_HV\\_Rak-20131003.pdf](http://www.mzp.cz/C1257458002F0DC7/cz/rakousko_dokument/$FILE/OOV-smlouva_HV_Rak-20131003.pdf)

3. Is your country a member of any joint body or mechanism for this agreement or arrangement?

Yes /No

*If no, why not? (please explain):* [fill in]

**Where there is a joint body or mechanism**

(a) If there is a joint body or mechanism, which kind of joint body or mechanism (*please tick one*)?

Plenipotentiaries

Bilateral commission

Basin or similar commission

---

Expert group meeting or meeting of national focal points

Other (*please describe*): [fill in]

(b) Does the joint body or mechanism cover the entire transboundary basin, sub-basin, part of a basin or group of basins?

Yes /No

(c) Which States (including your own) are members of the joint body or mechanism? (*Please list*):

Austria, Czech Republic

(d) Are there any riparian States that are not members of the joint body or mechanism? (*please list*):

Slovakia

(e) If not all riparian States are members of the joint body or mechanism how does the joint body or mechanism cooperate with them?

No cooperation

They have observer status

Other (*please describe*):

Trilateral meetings between Austria, the Czech Republic and Slovakia

(f) Does the joint body or mechanism have any of the following features (*please tick the ones applicable*)?

A secretariat

*If the secretariat is a permanent one, is it a joint secretariat or does each country host its own secretariat? (Please describe):* [fill in]

A subsidiary body or bodies

*Please list (e.g., working groups on specific topics):*

2 Sub-commissions dealing with particular topics of cooperation, expert group and in case of need the ad hoc working groups can be created

Other features (*please list*): [fill in]

(g) What are the tasks and activities of this joint body or mechanism?<sup>16</sup>

Identification of pollution sources

Data collection and exchange

Joint monitoring

Maintenance of joint pollution inventories

Setting emission limits

Elaboration of joint water quality objectives

Management and prevention of flood or drought risks

---

<sup>16</sup> This may include tasks according to the agreement or tasks added by the joint body, or its subsidiaries. Both tasks which joint bodies coordinate and tasks which they implement should be included.

- 
- Preparedness for extreme events, e.g., common early warning and alarm procedures
  - Surveillance and early warning of water related disease
  - Water allocation and/or flow regulation
  - Policy development
  - Control of implementation
  - Exchange of experience between riparian States
  - Exchange of information on existing and planned uses of water and related installations
  - Settling of differences and conflicts
  - Consultations on planned measures
  - Exchange of information on best available technology
  - Participation in transboundary EIA
  - Development of river, lake or aquifer basin management or action plans
  - Management of shared infrastructure
  - Addressing hydromorphological alterations
  - Climate change adaptation
  - Joint communication strategy
  - Basin-wide or joint public participation and consultation of, for example, basin management plans
  - Joint resources to support transboundary cooperation
  - Capacity-building

Any other tasks (*please list*):

National river basin management plans are coordinated using the joint bodies

(h) What are the main difficulties and challenges that your country faces with the operation of the joint body or mechanism, if any?

- Governance issues   
*Please describe, if any:* [fill in]
- Unexpected planning delays   
*Please describe, if any:* [fill in]
- Lack of resources   
*Please describe, if true:* [fill in]
- Lack of mechanism for implementing measures   
*Please describe, if true:* [fill in]
- Lack of effective measures   
*Please describe, if true:* [fill in]

---

Unexpected extreme events

*Please describe, if any:* [fill in]

Lack of information and reliable forecasts

*Please describe, if any:* [fill in]

Others (*please list and describe, as appropriate*): [fill in]

(i) Does the joint body or mechanism, or its subsidiary bodies meet regularly?

Yes /No

If yes, how frequently does it meet?

More than once per year

Once per year

Less than once per year

(j) What are the main achievements with regards to the joint body or mechanism?

effective water management, common projects

(k) Did the joint body or mechanism ever invite a non-riparian coastal State to cooperate?

Yes /No

*If yes, please give details. If no, why not, e.g. are the relevant coastal States also riparian States and therefore already members of the joint body or mechanism?*

This agreement covers the cooperation on transboundary issues and both countries are landlocked countries. The cooperation with coastal states is done via multilateral agreements.

4. Have joint objectives, a common strategy, a joint or coordinated management plan or action plan been agreed for the basin, sub-basin, part of a basin or group of basins?

Yes /No

*If yes, please provide further details:*

joint strategies, development programs. Objectives and strategies are results of bilateral agreements which are updated on a regular basis based on annual meetings of the bilateral commission and which are not available to public.

5. How is the transboundary basin,–sub-basin, part of a basins or group of basins protected, including the protection of ecosystems, in the context of sustainable and rational water use?

Regulation of urbanization, deforestation, and sand and gravel extraction.

Environmental flow norms, including consideration of levels and seasonality

Water quality protection, e.g. nitrates, pesticides, faecal coliforms, heavy metals

Water-related species and habitats protection

Other measures (*please describe*): [fill in]

---

6. (a) Does your country regularly exchange information and data with other riparian States in the basin, sub-basin, part of a basin or group of basins?

Yes /No

(b) If yes, how often:

More than once per year

Once per year

Less than once per year

(c) Please describe how information is exchanged (e.g. in connection with meetings of joint bodies): within meetings of joint body

(d) If yes, on what subjects are information and data exchanged?

Environmental conditions

Research activities and application of best available techniques

Emission monitoring data

Planned measures taken to prevent, control or reduce transboundary impacts

Point source pollution sources

Diffuse pollution sources

Existing hydromorphological alterations (dams, etc.)

Flows or water levels (including groundwater levels)

Water abstractions

Climatological information

Future planned measures with transboundary impacts, such as infrastructure development

Other subjects (*please list*): [fill in]

Other comments, e.g. spatial coverage of data and information exchange: [fill in]

(e) Is there a shared database or information platform?

Yes /No

(f) Is the database publicly available?

Yes /No

*If yes, please provide the web address:* [fill in]

(g) What are the main difficulties and challenges to data exchange, if applicable?

Frequency of exchanges

Timing of exchanges

Comparability of data and information

Limited spatial coverage

Inadequate resources (technical and/or financial)

---

Other (*please describe*): [fill in]

Additional comments: [fill in]

(h) What are the main benefits of data exchange on the basin, sub-basin, part of a basin or group of basins? (*please describe*):

Mutual awareness

7. Do the riparian States carry out joint monitoring in the transboundary basin, sub-basin, part of a basin or group of basins?

Yes /No

(a) If yes, what does the joint monitoring cover?

	<i>Hydrological</i>	<i>Ecological</i>	<i>Chemical</i>
Border surface waters	<input checked="" type="checkbox"/>	<input checked="" type="checkbox"/>	<input checked="" type="checkbox"/>
Surface waters in the entire basin	<input type="checkbox"/>	<input type="checkbox"/>	<input type="checkbox"/>
Surface waters on the main watercourse	<input checked="" type="checkbox"/>	<input checked="" type="checkbox"/>	<input checked="" type="checkbox"/>
Surface waters in part of the basin please describe [fill in]	<input type="checkbox"/>	<input type="checkbox"/>	<input type="checkbox"/>
Transboundary aquifer(s) (connected or unconnected)	<input checked="" type="checkbox"/>	<input type="checkbox"/>	<input checked="" type="checkbox"/>
Aquifer(s) in the territory of one riparian hydraulically connected to a transboundary river or lake	<input checked="" type="checkbox"/>	<input type="checkbox"/>	<input checked="" type="checkbox"/>

(b) If joint monitoring is carried out, how is this done?

National monitoring stations connected through a network or common stations

*Please describe:* specific monitoring stations of national monitoring network are used, located in border rivers

Joint and agreed methodologies

*Please describe:* monitoring is performed based on requirements of WFD

Joint sampling

*Please describe:* location and frequency of joint sampling is agreed in bilateral commission

Common monitoring network

*Please describe:* monitoring stations are agreed in bilateral commission

Common agreed parameters

*Please describe:* parameters are agreed in bilateral commission

(c) Please describe the main achievements regarding joint monitoring, if any:  
continuous monitoring results available

---

(d) Please describe any difficulties experienced with joint monitoring:  
differences in National methodologies and standards

8. Do the riparian States carry out joint assessment of the transboundary basin, sub-basin, part of a basin or group of basins?

Yes /No

*If yes, please provide the date of the last or only assessment, the frequency and scope (e.g., surface waters or groundwaters only, pollution sources, etc.) of the assessment, and assessment methodology applied:*

Regularly at meetings of experts and Subcommissions

9. Have the riparian States agreed to use joint water quality standards?

Yes /No

*If yes, what standards have been applied, e.g. international or regional standards (please specify which), or have national standards of the riparian States been applied?*

according to the Water Framework Directive

10. What are the measures implemented to prevent or limit the transboundary impact of accidental pollution?

Notification and communication

Coordinated or joint early warning or alarm system for accidental water pollution

Other (*please list*): [fill in]

No measures

*If not, why not? What difficulties does your country face in putting in place such measures?:* [fill in]

11. What are the measures implemented to prevent or limit the transboundary impact of extreme weather events and climate change?

Notification and communication

Coordinated or joint alarm system for floods

Coordinated or joint alarm system for droughts

Joint climate change adaptation strategy

Joint disaster risk reduction strategy

Other (*please list*): Common regulation for accidental water pollution

No measures

*If not, why not? What difficulties does your country face in putting in place such measures?:* [fill in]

12. Are procedures in place for mutual assistance in case of a critical situation?

Yes /No

*If yes, please provide a brief summary:*

Mutual assistance is done on the level of local authorities and firefighter brigades, upon request



---

13. Are the public or relevant stakeholders involved in transboundary water management in the basin, sub-basin, part of a basin or group of basins?

Yes /No

*If yes, how? (please tick all applicable)*

Stakeholders have observer status in a joint body or mechanism

Stakeholders have an advisory role in the joint body

Stakeholders have a decision-making role in the joint body

*If yes, please specify the stakeholders for the joint body or mechanism:*  
[fill in]

Intergovernmental organizations

Private sectors organizations or associations

Water user groups or associations

Academic or research institutions

Other non-governmental organizations

General public

Other (please specify): [fill in]

Availability of information to the public

Consultation on planned measures or river basin management plans<sup>17</sup>

Public involvement

Other (please specify): [fill in]

---

<sup>17</sup> Or, where applicable, aquifer management plans.

---

**Bilateral Commission Austria-Germany**

**Name of the transboundary basin,-sub-basin, part of a basin or group of basins:**

**Danube river basin**

List of the riparian States: Austria, Germany

**In the case of an aquifer, what is the nature of the aquifer and its relation with the river or lake basin:**

- Unconfined aquifer connected to a river or lake
- Unconfined aquifer with no or limited relation with surface water
- Confined aquifer connected to surface water
- Confined aquifer with no or limited relation with surface water
- Other
- Please describe: [fill in]
- Unknown

**Percentage of your country's territory within the basin, sub-basin, part of a basin or group of basins:** 21,8%

1. Is there one or more transboundary (bilateral or multilateral) agreement(s) or arrangement(s) on this basin, sub-basin, part of a basin or group of basins?

One or more agreements or arrangements exist and are in force

Agreement or arrangement developed but not in force

Agreement or arrangement developed, but not in force for all riparians

*Please insert the name of the agreement(s) or arrangement(s)*

1991 Agreement between Republic of Austria and the Federal Republic of Germany on the water resources management cooperation in the Danube River Basin

1994 Danube River Protection Convention (for the whole Danube basin, DE and AT are two of 15 Parties of this Convention)

Agreement or arrangement is under development

No agreement or arrangement

*If there is no agreement or arrangement or it is not in force, please explain briefly why not and provide information on any plans to address the situation:* [fill in]

**If there is no agreement or arrangement and no joint body or mechanism for the transboundary basin, sub-basin, part of a basin or group of basins then jump to question 4; if there is no agreement or arrangement, but a joint body or mechanism then go to question 3.**

**Questions 2 and 3 to be completed for each bilateral or multilateral agreement or arrangement in force in the transboundary basin, sub-basin, part of a basin or group of basins.**

2. (a) Does this agreement or arrangement specify the area subject to cooperation?

Yes /No

If yes, does it cover the entire basin or group of basins and all riparian States?

---

Yes /No

Additional explanations?

All water bodies in the Austrian and German Danube basin upstream “Donau-Jochenstein”

Or, if the agreement or arrangement relates to a sub-basin, does it cover the entire sub-basin?

Yes /No

Additional explanations? **All water bodies in the Austrian and German Danube basin upstream “Donau-Jochenstein”**

Which States (including your own) are bound by the agreement or arrangement?  
(Please list): Austria, Germany

(b) If the agreement or arrangement relates to a river or lake basin or sub-basin, does it also cover aquifers?

Yes /No

If yes, please list the aquifers covered by the agreement or arrangement: GK 100158

(c) What is the sectoral scope of the agreement or arrangement?

- |                               |                                     |
|-------------------------------|-------------------------------------|
| All water uses                | <input checked="" type="checkbox"/> |
| A single water use or sector  | <input type="checkbox"/>            |
| Several water uses or sectors | <input type="checkbox"/>            |

If one or several water uses or sectors, please list (check as appropriate):

**Water uses or sectors**

- |   |                          |
|---|--------------------------|
| Industry                                  | <input type="checkbox"/> |
| Agriculture                               | <input type="checkbox"/> |
| Transport (e.g., navigation)              | <input type="checkbox"/> |
| Households                                | <input type="checkbox"/> |
| Energy: hydropower and other energy types | <input type="checkbox"/> |
| Fisheries                                 | <input type="checkbox"/> |
| Tourism                                   | <input type="checkbox"/> |
| Nature protection                         | <input type="checkbox"/> |
| Other (please list): [fill in]            |                          |

(d) What topics or subjects of cooperation are included in the agreement or arrangement?

**Procedural and institutional issues**

- |  |                                     |
|--|-------------------------------------|
| Dispute and conflict prevention and resolution | <input checked="" type="checkbox"/> |
| Institutional cooperation (joint bodies)       | <input checked="" type="checkbox"/> |
| Consultation on planned measures               | <input checked="" type="checkbox"/> |
| Mutual assistance                              | <input checked="" type="checkbox"/> |

**Topics of cooperation**

- 
- Joint vision and management objectives
  - Joint significant water management issues
  - Navigation
  - Human health
  - Environmental protection (ecosystem)
  - Water quality
  - Water quantity or allocation
  - Cooperation in addressing floods
  - Cooperation in addressing droughts
  - Climate change adaptation

**Monitoring and exchange**

- Joint assessments
- Data collection and exchange
- Joint monitoring
- Maintenance of joint pollution inventories
- Elaboration of joint water quality objectives
- Common early warning and alarm procedures
- Exchange of experience between riparian States
- Exchange of information on planned measures

**Joint planning and management**

- Development of joint regulations on specific topics
- Development of international or joint river, lake or aquifer basin management or action plans
- Management of shared infrastructure
- Development of shared infrastructure

Other (*please list*):

National river basin management plans are coordinated using joint body

(e) What are the main difficulties and challenges that your country faces with the agreement or arrangement and its implementation, if any?

- Aligning implementation of agreement or arrangement with national laws, policies and programmes
- Aligning implementation of agreement or arrangement with regional laws, policies and programmes
- Lack of financial resources
- Insufficient human capacity
- Insufficient technical capacity
- Tense diplomatic relations

---

Non-participation of certain riparian countries in the agreement

No significant difficulties

Other (*please describe*): [fill in]

(f) What are the main achievements in implementing the agreement or arrangement and what were the keys to achieving such success?

The main achievements have been improvement in the ecological and chemical quality of water bodies at the borders in the Danube basin. This has been achieved through both measures to reduce pollution and river restoration measures. Also, the flood management has improved. Next to this, improvements include the exchange of data and information between the parties, including a regional warning and alarm system, and a certain level of alignment of measures and plans in the riparian countries. Key to this success has been close cooperation at technical level and the subsequent building of trust as well as mutual understanding among the countries.

(g) Please attach a copy of the agreement or arrangement or provide the web address of the document (*please attach document or insert web address, if applicable*):

<https://www.ris.bka.gv.at/GeltendeFassung.wxe?Abfrage=Bundesnormen&Gesetzesnummer=10010659>

3. Is your country a member of any joint body or mechanism for this agreement or arrangement?

Yes /No

*If no, why not? (please explain):* [fill in]

**Where there is a joint body or mechanism**

(a) If there is a joint body or mechanism, which kind of joint body or mechanism (*please tick one*)?

Plenipotentiaries

Bilateral commission

Basin or similar commission

Expert group meeting or meeting of national focal points

Other (*please describe*): [fill in]

(b) Does the joint body or mechanism cover the entire transboundary basin, sub-basin, part of a basin or group of basins?

Yes /No

(c) Which States (including your own) are members of the joint body or mechanism? (*Please list*): Austria, Germany

(d) Are there any riparian States that are not members of the joint body or mechanism? (*please list*): [fill in]

(e) If not all riparian States are members of the joint body or mechanism how does the joint body or mechanism cooperate with them?

No cooperation

They have observer status

---

Other (*please describe*): [fill in]

(f) Does the joint body or mechanism have any of the following features (*please tick the ones applicable*)?

A secretariat

*If the secretariat is a permanent one, is it a joint secretariat or does each country host its own secretariat? (Please describe):* [fill in]

A subsidiary body or bodies

*Please list (e.g., working groups on specific topics):*

Working Group on Management and Protection of water bodies

Working Group on water quantity management and hydraulic engineering

Expert group on thermal water

Committee for revision of existing agreements and treaties

Other features (*please list*): [fill in]

(g) What are the tasks and activities of this joint body or mechanism?<sup>18</sup>

Identification of pollution sources

Data collection and exchange

Joint monitoring

Maintenance of joint pollution inventories

Setting emission limits

Elaboration of joint water quality objectives

Management and prevention of flood or drought risks

Preparedness for extreme events, e.g., common early warning and alarm procedures

Surveillance and early warning of water related disease

Water allocation and/or flow regulation

Policy development

Control of implementation

Exchange of experience between riparian States

Exchange of information on existing and planned uses of water and related installations

Settling of differences and conflicts

Consultations on planned measures

Exchange of information on best available technology

Participation in transboundary EIA

---

<sup>18</sup> This may include tasks according to the agreement or tasks added by the joint body, or its subsidiaries. Both tasks which joint bodies coordinate and tasks which they implement should be included.

- 
- Development of river, lake or aquifer basin management or action plans
  - Management of shared infrastructure
  - Addressing hydromorphological alterations
  - Climate change adaptation
  - Joint communication strategy
  - Basin-wide or joint public participation and consultation of, for example, basin management plans
  - Joint resources to support transboundary cooperation
  - Capacity-building

Any other tasks (*please list*):

National river basin management plans are coordinated using the joint bodies

(h) What are the main difficulties and challenges that your country faces with the operation of the joint body or mechanism, if any?

Governance issues

*Please describe, if any:* [fill in]

Unexpected planning delays

*Please describe, if any:* [fill in]

Lack of resources

*Please describe, if true:* [fill in]

Lack of mechanism for implementing measures

*Please describe, if true:* [fill in]

Lack of effective measures

*Please describe, if true:* [fill in]

Unexpected extreme events

*Please describe, if any:* [fill in]

Lack of information and reliable forecasts

*Please describe, if any:* [fill in]

Others (*please list and describe, as appropriate*): [fill in]

(i) Does the joint body or mechanism, or its subsidiary bodies meet regularly?

Yes /No

If yes, how frequently does it meet?

More than once per year

Once per year

Less than once per year

(j) What are the main achievements with regards to the joint body or mechanism?

see question 2.f above

---

(k) Did the joint body or mechanism ever invite a non-riparian coastal State to cooperate?

Yes /No

*If yes, please give details. If no, why not, e.g. are the relevant coastal States also riparian States and therefore already members of the joint body or mechanism? [fill in]*

4. Have joint objectives, a common strategy, a joint or coordinated management plan or action plan been agreed for the basin, sub-basin, part of a basin or group of basins?

Yes /No

*If yes, please provide further details:*

Cooperation concerning all water management issues relevant for border waters. Objectives and strategies are results of bilateral agreements which are updated on a regular basis based on annual meetings of the bilateral commission and which are not available to public.

5. How is the transboundary basin, sub-basin, part of a basins or group of basins protected, including the protection of ecosystems, in the context of sustainable and rational water use?

Regulation of urbanization, deforestation, and sand and gravel extraction.

Environmental flow norms, including consideration of levels and seasonality

Water quality protection, e.g. nitrates, pesticides, faecal coliforms, heavy metals

Water-related species and habitats protection

Other measures (*please describe*):

Joint model on the use of a transboundary thermal water body

6. (a) Does your country regularly exchange information and data with other riparian States in the basin, sub-basin, part of a basin or group of basins?

Yes /No

(b) If yes, how often:

More than once per year

Once per year

Less than once per year

(c) Please describe how information is exchanged (e.g. in connection with meetings of joint bodies): within meetings of joint body

(d) If yes, on what subjects are information and data exchanged?

Environmental conditions

Research activities and application of best available techniques

Emission monitoring data

Planned measures taken to prevent, control or reduce transboundary impacts



- 
- Point source pollution sources
  - Diffuse pollution sources
  - Existing hydromorphological alterations (dams, etc.)
  - Flows or water levels (including groundwater levels)
  - Water abstractions
  - Climatological information
  - Future planned measures with transboundary impacts, such as infrastructure development
  - Other subjects (*please list*): [fill in]
  - Other comments, e.g. spatial coverage of data and information exchange: [fill in]

(e) Is there a shared database or information platform?

Yes /No

(f) Is the database publicly available?

Yes /No

*If yes, please provide the web address:* [fill in]

(g) What are the main difficulties and challenges to data exchange, if applicable?

Frequency of exchanges

Timing of exchanges

Comparability of data and information

Limited spatial coverage

Inadequate resources (technical and/or financial)

Other (*please describe*): [fill in]

Additional comments: [fill in]

(h) What are the main benefits of data exchange on the basin, sub-basin, part of a basin or group of basins? (*please describe*):

Better overview on the border waters, comparability, improved understanding of other countries' issues and problems.

7. Do the riparian States carry out joint monitoring in the transboundary basin, sub-basin, part of a basin or group of basins?

Yes /No

(a) If yes, what does the joint monitoring cover?

	<i>Hydrological</i>	<i>Ecological</i>	<i>Chemical</i>
Border surface waters	<input checked="" type="checkbox"/>	<input checked="" type="checkbox"/>	<input checked="" type="checkbox"/>
Surface waters in the entire basin	<input type="checkbox"/>	<input type="checkbox"/>	<input type="checkbox"/>
Surface waters on the main watercourse	<input type="checkbox"/>	<input type="checkbox"/>	<input type="checkbox"/>

	<i>Hydrological</i>	<i>Ecological</i>	<i>Chemical</i>
Surface waters in part of the basin please describe [fill in]	<input type="checkbox"/>	<input type="checkbox"/>	<input type="checkbox"/>
Transboundary aquifer(s) (connected or unconnected)	<input checked="" type="checkbox"/>	<input type="checkbox"/>	<input checked="" type="checkbox"/>
Aquifer(s) in the territory of one riparian hydraulically connected to a transboundary river or lake	<input checked="" type="checkbox"/>	<input type="checkbox"/>	<input checked="" type="checkbox"/>

(b) If joint monitoring is carried out, how is this done?

National monitoring stations connected through a network or common stations

*Please describe:* specific monitoring stations of national monitoring network are used, located in border rivers

Joint and agreed methodologies

*Please describe:* monitoring is performed based on requirements of WFD

Joint sampling

*Please describe:* location and frequency is agreed in bilateral commission

Common monitoring network

*Please describe:* monitoring stations are agreed in bilateral commission

Common agreed parameters

*Please describe:* parameters are agreed in bilateral commission

(c) Please describe the main achievements regarding joint monitoring, if any:

long-term cooperation yields long time series of chemical and biological parameters that enable joint trend analyses and joint conclusions on the trends.

(d) Please describe any difficulties experienced with joint monitoring:

harmonisation of national methodologies used for the evaluation of monitoring data (e.g. biological quality elements), inconsistencies in monitoring data along border rivers

8. Do the riparian States carry out joint assessment of the transboundary basin, sub-basin, part of a basin or group of basins?

Yes /No

*If yes, please provide the date of the last or only assessment, the frequency and scope (e.g., surface waters or groundwaters only, pollution sources, etc.) of the assessment, and assessment methodology applied:*

Joint assessments of water quality of border waters

<https://www.bmlrt.gv.at/wasser/wasser-eu-internationale/internationale-wasserpolitik/Bericht--ber-Abstimmung-an-deutsch--sterreichischen-Grenzgew-ssern.html>

9. Have the riparian States agreed to use joint water quality standards?

---

Yes /No

*If yes, what standards have been applied, e.g. international or regional standards (please specify which), or have national standards of the riparian States been applied?*

based on EU Water legislation

10. What are the measures implemented to prevent or limit the transboundary impact of accidental pollution?

Notification and communication

Coordinated or joint early warning or alarm system for accidental water pollution

Other (*please list*): [fill in]

No measures

*If not, why not? What difficulties does your country face in putting in place such measures?:* [fill in]

11. What are the measures implemented to prevent or limit the transboundary impact of extreme weather events and climate change?

Notification and communication

Coordinated or joint alarm system for floods

Coordinated or joint alarm system for droughts

Joint climate change adaptation strategy

Joint disaster risk reduction strategy

Other (*please list*): [fill in]

Those activities happen also within the ICPDR (International Commission for the Protection of the Danube River)

No measures

*If not, why not? What difficulties does your country face in putting in place such measures?:*

12. Are procedures in place for mutual assistance in case of a critical situation?

Yes /No

*If yes, please provide a brief summary:*

Agreed procedures and contact points in cases of disasters with transboundary effects specified by a handbook

13. Are the public or relevant stakeholders involved in transboundary water management in the basin, sub-basin, part of a basin or group of basins?

Yes /No

*If yes, how? (please tick all applicable)*

Stakeholders have observer status in a joint body or mechanism

Stakeholders have an advisory role in the joint body

Stakeholders have a decision-making role in the joint body

---

*If yes, please specify the stakeholders for the joint body or mechanism:*  
[fill in]

Intergovernmental organizations

Private sectors organizations or associations

Water user groups or associations

Academic or research institutions

Other non-governmental organizations

General public

Other (please specify): [fill in]

Availability of information to the public

Consultation on planned measures or river basin  
management plans<sup>19</sup>

Public involvement

Other (*please specify*): [fill in]

---

<sup>19</sup> Or, where applicable, aquifer management plans.

---

**Bilateral Commission Austria-Hungary**

**Name of the transboundary basin,-sub-basin, part of a basin or group of basins:**

**Leitha, Raab, and Rabnitz river basin**

List of the riparian States: Austria, Hungary

**In the case of an aquifer, what is the nature of the aquifer and its relation with the river or lake basin:**

- Unconfined aquifer connected to a river or lake
- Unconfined aquifer with no or limited relation with surface water
- Confined aquifer connected to surface water
- Confined aquifer with no or limited relation with surface water
- Other
- Please describe: [fill in]
- Unknown

**Percentage of your country's territory within the basin, sub-basin, part of a basin or group of basins:** 10,5%

1. Is there one or more transboundary (bilateral or multilateral) agreement(s) or arrangement(s) on this basin, sub-basin, part of a basin or group of basins?

One or more agreements or arrangements exist and are in force

Agreement or arrangement developed but not in force

Agreement or arrangement developed, but not in force for all riparians

*Please insert the name of the agreement(s) or arrangement(s)*

1959 Agreement on the regulation of water management issues in the borderland between Austria and Hungary

Agreement or arrangement is under development

No agreement or arrangement

*If there is no agreement or arrangement or it is not in force, please explain briefly why not and provide information on any plans to address the situation:* [fill in]

**If there is no agreement or arrangement and no joint body or mechanism for the transboundary basin, sub-basin, part of a basin or group of basins then jump to question 4; if there is no agreement or arrangement, but a joint body or mechanism then go to question 3.**

**Questions 2 and 3 to be completed for each bilateral or multilateral agreement or arrangement in force in the transboundary basin, sub-basin, part of a basin or group of basins.**

2. (a) Does this agreement or arrangement specify the area subject to cooperation?

Yes /No

If yes, does it cover the entire basin or group of basins and all riparian States?

Yes /No

Additional explanations?

---

Or, if the agreement or arrangement relates to a sub-basin, does it cover the entire sub-basin?

Yes /No

Additional explanations? [fill in]

Which States (including your own) are bound by the agreement or arrangement?  
(Please list): Austria, Hungary

(b) If the agreement or arrangement relates to a river or lake basin or sub-basin, does it also cover aquifers?

Yes /No

2] If yes, please list the aquifers covered by the agreement or arrangement: [See Table

(c) What is the sectoral scope of the agreement or arrangement?

All water uses

A single water use or sector

Several water uses or sectors

If one or several water uses or sectors, please list (check as appropriate):

**Water uses or sectors**

Industry

Agriculture

Transport (e.g., navigation)

Households

Energy: hydropower and other energy types

Fisheries

Tourism

Nature protection

Other (please list): water management

(d) What topics or subjects of cooperation are included in the agreement or arrangement?

**Procedural and institutional issues**

Dispute and conflict prevention and resolution

Institutional cooperation (joint bodies)

Consultation on planned measures

Mutual assistance

**Topics of cooperation**

Joint vision and management objectives

Joint significant water management issues

Navigation

- 
- Human health
  - Environmental protection (ecosystem)
  - Water quality
  - Water quantity or allocation
  - Cooperation in addressing floods
  - Cooperation in addressing droughts
  - Climate change adaptation
  - Monitoring and exchange**
  - Joint assessments
  - Data collection and exchange
  - Joint monitoring
  - Maintenance of joint pollution inventories
  - Elaboration of joint water quality objectives
  - Common early warning and alarm procedures
  - Exchange of experience between riparian States
  - Exchange of information on planned measures
  - Joint planning and management**
  - Development of joint regulations on specific topics
  - Development of international or joint river, lake or aquifer basin management or action plans
  - Management of shared infrastructure
  - Development of shared infrastructure
  - Other (*please list*): [fill in]

(e) What are the main difficulties and challenges that your country faces with the agreement or arrangement and its implementation, if any?

- Aligning implementation of agreement or arrangement with national laws, policies and programmes
- Aligning implementation of agreement or arrangement with regional laws, policies and programmes
- Lack of financial resources
- Insufficient human capacity
- Insufficient technical capacity
- Tense diplomatic relations
- Non-participation of certain riparian countries in the agreement
- No significant difficulties
- Other (*please describe*): [fill in]

---

(f) What are the main achievements in implementing the agreement or arrangement and what were the keys to achieving such success?

Long-term cooperation and communication, exchange of information and experiences, common activities at different levels, political commitment

(g) Please attach a copy of the agreement or arrangement or provide the web address of the document (*please attach document or insert web address, if applicable*):

<https://www.ris.bka.gv.at/GeltendeFassung.wxe?Abfrage=Bundesnormen&Gesetzesnummer=10010293>

3. Is your country a member of any joint body or mechanism for this agreement or arrangement?

Yes /No

*If no, why not? (please explain):* [fill in]

**Where there is a joint body or mechanism**

(a) If there is a joint body or mechanism, which kind of joint body or mechanism (*please tick one*)?

Plenipotentiaries

Bilateral commission

Basin or similar commission

Expert group meeting or meeting of national focal points

Other (*please describe*): [fill in]

(b) Does the joint body or mechanism cover the entire transboundary basin, sub-basin, part of a basin or group of basins?

Yes /No

(c) Which States (including your own) are members of the joint body or mechanism? (*Please list*): Austria, Hungary

(d) Are there any riparian States that are not members of the joint body or mechanism? (*please list*): [fill in]

(e) If not all riparian States are members of the joint body or mechanism how does the joint body or mechanism cooperate with them?

No cooperation

They have observer status

Other (*please describe*): [fill in]

(f) Does the joint body or mechanism have any of the following features (*please tick the ones applicable*)?

A secretariat

*If the secretariat is a permanent one, is it a joint secretariat or does each country host its own secretariat? (Please describe):* [fill in]

A subsidiary body or bodies

*Please list (e.g., working groups on specific topics):*



---

sub-commission, expert group, if needed ad hoc groups

Other features (*please list*): [fill in]

(g) What are the tasks and activities of this joint body or mechanism?<sup>20</sup>

- |   |                                     |
|---|-------------------------------------|
| Identification of pollution sources   | <input type="checkbox"/>            |
| Data collection and exchange  | <input checked="" type="checkbox"/> |
| Joint monitoring  | <input checked="" type="checkbox"/> |
| Maintenance of joint pollution inventories  | <input type="checkbox"/>            |
| Setting emission limits   | <input type="checkbox"/>            |
| Elaboration of joint water quality objectives   | <input checked="" type="checkbox"/> |
| Management and prevention of flood or drought risks   | <input checked="" type="checkbox"/> |
| Preparedness for extreme events, e.g., common early warning and alarm procedures                  | <input checked="" type="checkbox"/> |
| Surveillance and early warning of water related disease   | <input type="checkbox"/>            |
| Water allocation and/or flow regulation   | <input checked="" type="checkbox"/> |
| Policy development  | <input checked="" type="checkbox"/> |
| Control of implementation   | <input checked="" type="checkbox"/> |
| Exchange of experience between riparian States  | <input checked="" type="checkbox"/> |
| Exchange of information on existing and planned uses of water and related installations           | <input checked="" type="checkbox"/> |
| Settling of differences and conflicts   | <input checked="" type="checkbox"/> |
| Consultations on planned measures   | <input checked="" type="checkbox"/> |
| Exchange of information on best available technology  | <input checked="" type="checkbox"/> |
| Participation in transboundary EIA  | <input checked="" type="checkbox"/> |
| Development of river, lake or aquifer basin management or action plans                            | <input checked="" type="checkbox"/> |
| Management of shared infrastructure   | <input checked="" type="checkbox"/> |
| Addressing hydromorphological alterations   | <input checked="" type="checkbox"/> |
| Climate change adaptation   | <input checked="" type="checkbox"/> |
| Joint communication strategy  | <input type="checkbox"/>            |
| Basin-wide or joint public participation and consultation of, for example, basin management plans | <input type="checkbox"/>            |
| Joint resources to support transboundary cooperation  | <input checked="" type="checkbox"/> |
| Capacity-building   | <input checked="" type="checkbox"/> |
| Any other tasks ( <i>please list</i> ):   |                                     |

---

<sup>20</sup> This may include tasks according to the agreement or tasks added by the joint body, or its subsidiaries. Both tasks which joint bodies coordinate and tasks which they implement should be included.

---

National river basin management plans are coordinated using the joint bodies

(h) What are the main difficulties and challenges that your country faces with the operation of the joint body or mechanism, if any?

Governance issues

*Please describe, if any:* [fill in]

Unexpected planning delays

*Please describe, if any:* [fill in]

Lack of resources

*Please describe, if true:* [fill in]

Lack of mechanism for implementing measures

*Please describe, if true:* [fill in]

Lack of effective measures

*Please describe, if true:* [fill in]

Unexpected extreme events

*Please describe, if any:* [fill in]

Lack of information and reliable forecasts

*Please describe, if any:* [fill in]

Others (*please list and describe, as appropriate*): [fill in]

(i) Does the joint body or mechanism, or its subsidiary bodies meet regularly?

Yes /No

If yes, how frequently does it meet?

More than once per year

Once per year

Less than once per year

(j) What are the main achievements with regards to the joint body or mechanism?  
effective water management, common projects

(k) Did the joint body or mechanism ever invite a non-riparian coastal State to cooperate?

Yes /No

*If yes, please give details. If no, why not, e.g. are the relevant coastal States also riparian States and therefore already members of the joint body or mechanism?* [fill in]

4. Have joint objectives, a common strategy, a joint or coordinated management plan or action plan been agreed for the basin, sub-basin, part of a basin or group of basins?

Yes /No

*If yes, please provide further details:* joint strategies, development programs. Objectives and strategies are results of bilateral agreements which are updated on a regular basis based on annual meetings of the bilateral commission and which are not available to public.

- 
5. How is the transboundary basin,–sub-basin, part of a basins or group of basins protected, including the protection of ecosystems, in the context of sustainable and rational water use?

Regulation of urbanization, deforestation, and sand and gravel extraction.

Environmental flow norms, including consideration of levels and seasonality

Water quality protection, e.g. nitrates, pesticides, faecal coliforms, heavy metals

Water-related species and habitats protection

Other measures (*please describe*): [fill in]

6. (a) Does your country regularly exchange information and data with other riparian States in the basin, sub-basin, part of a basin or group of basins?

Yes /No

- (b) If yes, how often:

More than once per year

Once per year

Less than once per year

- (c) Please describe how information is exchanged (e.g. in connection with meetings of joint bodies): within meetings of joint bodies

- (d) If yes, on what subjects are information and data exchanged?

Environmental conditions

Research activities and application of best available techniques

Emission monitoring data

Planned measures taken to prevent, control or reduce transboundary impacts

Point source pollution sources

Diffuse pollution sources

Existing hydromorphological alterations (dams, etc.)

Flows or water levels (including groundwater levels)

Water abstractions

Climatological information

Future planned measures with transboundary impacts, such as infrastructure development

Other subjects (*please list*): water body status

Other comments, e.g. spatial coverage of data and information exchange: [fill in]

- (e) Is there a shared database or information platform?

Yes /No

(f) Is the database publicly available?

Yes /No

If yes, please provide the web address: [fill in]

(g) What are the main difficulties and challenges to data exchange, if applicable?

Frequency of exchanges

Timing of exchanges

Comparability of data and information

Limited spatial coverage

Inadequate resources (technical and/or financial)

Other (please describe): [fill in]

Additional comments: [fill in]

(h) What are the main benefits of data exchange on the basin, sub-basin, part of a basin or group of basins? (please describe):

Mutual awareness, early warning

7. Do the riparian States carry out joint monitoring in the transboundary basin, sub-basin, part of a basin or group of basins?

Yes /No

(a) If yes, what does the joint monitoring cover?

	<i>Hydrological</i>	<i>Ecological</i>	<i>Chemical</i>
Border surface waters	<input checked="" type="checkbox"/>	<input checked="" type="checkbox"/>	<input checked="" type="checkbox"/>
Surface waters in the entire basin	<input type="checkbox"/>	<input type="checkbox"/>	<input type="checkbox"/>
Surface waters on the main watercourse	<input checked="" type="checkbox"/>	<input checked="" type="checkbox"/>	<input checked="" type="checkbox"/>
Surface waters in part of the basin please describe [fill in]	<input type="checkbox"/>	<input type="checkbox"/>	<input type="checkbox"/>
Transboundary aquifer(s) (connected or unconnected)	<input checked="" type="checkbox"/>	<input type="checkbox"/>	<input checked="" type="checkbox"/>
Aquifer(s) in the territory of one riparian hydraulically connected to a transboundary river or lake	<input checked="" type="checkbox"/>	<input type="checkbox"/>	<input checked="" type="checkbox"/>

(b) If joint monitoring is carried out, how is this done?

National monitoring stations connected through a network or common stations

Please describe: specific monitoring stations of national monitoring network are used, located in border rivers

Joint and agreed methodologies

Please describe: monitoring is performed based on requirements of WFD

- 
- Joint sampling
- Please describe:* location and frequency is agreed in bilateral commission
- Common monitoring network
- Please describe:* monitoring stations are agreed in bilateral commission
- Common agreed parameters
- Please describe:* parameters are agreed in bilateral commission
- (c) Please describe the main achievements regarding joint monitoring, if any:  
continuous monitoring results available
- (d) Please describe any difficulties experienced with joint monitoring:  
differences in national methodologies and standards
8. Do the riparian States carry out joint assessment of the transboundary basin, sub-basin, part of a basin or group of basins?
- Yes /No
- If yes, please provide the date of the last or only assessment, the frequency and scope (e.g., surface waters or groundwaters only, pollution sources, etc.) of the assessment, and assessment methodology applied:*
- at the regular meetings of the subcommission, expert group
9. Have the riparian States agreed to use joint water quality standards?
- Yes /No
- If yes, what standards have been applied, e.g. international or regional standards (please specify which), or have national standards of the riparian States been applied?*
- according to the Water Framework Directive
10. What are the measures implemented to prevent or limit the transboundary impact of accidental pollution?
- Notification and communication
- Coordinated or joint early warning or alarm system for accidental water pollution
- Other (*please list*): [fill in]
- No measures
- If not, why not? What difficulties does your country face in putting in place such measures?:* [fill in]
11. What are the measures implemented to prevent or limit the transboundary impact of extreme weather events and climate change?
- Notification and communication
- Coordinated or joint alarm system for floods
- Coordinated or joint alarm system for droughts
- Joint climate change adaptation strategy
- Joint disaster risk reduction strategy

---

Other (*please list*): [fill in]

No measures

*If not, why not? What difficulties does your country face in putting in place such measures?:* [fill in]

12. Are procedures in place for mutual assistance in case of a critical situation?

Yes /No

*If yes, please provide a brief summary:*

Mutual assistance is done on the level of local authorities and firefighter brigades, upon request

13. Are the public or relevant stakeholders involved in transboundary water management in the basin, sub-basin, part of a basin or group of basins?

Yes /No

*If yes, how? (please tick all applicable)*

Stakeholders have observer status in a joint body or mechanism

Stakeholders have an advisory role in the joint body

Stakeholders have a decision-making role in the joint body

*If yes, please specify the stakeholders for the joint body or mechanism:*  
[fill in]

Intergovernmental organizations

Private sectors organizations or associations

Water user groups or associations

Academic or research institutions

Other non-governmental organizations

General public

Other (*please specify*): [fill in]

Availability of information to the public

Consultation on planned measures or river basin management plans<sup>21</sup>

Public involvement

Other (*please specify*): Public participation EU- WFD and EU FD

---

<sup>21</sup> Or, where applicable, aquifer management plans.

---

**Bilateral Commission Austria-Slovenia (Drava-Commission)**

**Name of the transboundary basin,-sub-basin, part of a basin or group of basins:**

**Drava river basin upstream part within Austria and Slovenia**

List of the riparian States: Austria, Slovenia

**In the case of an aquifer, what is the nature of the aquifer and its relation with the river or lake basin:**

- Unconfined aquifer connected to a river or lake
- Unconfined aquifer with no or limited relation with surface water
- Confined aquifer connected to surface water
- Confined aquifer with no or limited relation with surface water
- Other
- Please describe: [fill in]
- Unknown

**Percentage of your country's territory within the basin, sub-basin, part of a basin or group of basins:** 14,1%

1. Is there one or more transboundary (bilateral or multilateral) agreement(s) or arrangement(s) on this basin, sub-basin, part of a basin or group of basins?

One or more agreements or arrangements exist and are in force

Agreement or arrangement developed but not in force

Agreement or arrangement developed, but not in force for all riparians

*Please insert the name of the agreement(s) or arrangement(s)*

Government Agreement between Republic of Austria and Republic of Yugoslavia on Water Management Issues on the Drau of 25 May 1954 (Further application agreement between Republic of Austria and Republic of Slovenia in Federal Law Gazette No. 714/1993)

Agreement or arrangement is under development

No agreement or arrangement

*If there is no agreement or arrangement or it is not in force, please explain briefly why not and provide information on any plans to address the situation:* [fill in]

**If there is no agreement or arrangement and no joint body or mechanism for the transboundary basin, sub-basin, part of a basin or group of basins then jump to question 4; if there is no agreement or arrangement, but a joint body or mechanism then go to question 3.**

**Questions 2 and 3 to be completed for each bilateral or multilateral agreement or arrangement in force in the transboundary basin, sub-basin, part of a basin or group of basins.**

2. (a) Does this agreement or arrangement specify the area subject to cooperation?

Yes /No

If yes, does it cover the entire basin or group of basins and all riparian States?

Yes /No

---

Additional explanations? **upstream part of Drava within Austria and Slovenia**

Or, if the agreement or arrangement relates to a sub-basin, does it cover the entire sub-basin?

Yes /No

Additional explanations? [fill in]

Which States (including your own) are bound by the agreement or arrangement?  
(Please list): Austria, Slovenia

(b) If the agreement or arrangement relates to a river or lake basin or sub-basin, does it also cover aquifers?

Yes /No

If yes, please list the aquifers covered by the agreement or arrangement: [see table 2]

(c) What is the sectoral scope of the agreement or arrangement?

- |                               |                                     |
|-------------------------------|-------------------------------------|
| All water uses                | <input checked="" type="checkbox"/> |
| A single water use or sector  | <input type="checkbox"/>            |
| Several water uses or sectors | <input type="checkbox"/>            |

If one or several water uses or sectors, please list (check as appropriate):

**Water uses or sectors**

- |   |                          |
|---|--------------------------|
| Industry                                  | <input type="checkbox"/> |
| Agriculture                               | <input type="checkbox"/> |
| Transport (e.g., navigation)              | <input type="checkbox"/> |
| Households                                | <input type="checkbox"/> |
| Energy: hydropower and other energy types | <input type="checkbox"/> |
| Fisheries                                 | <input type="checkbox"/> |
| Tourism                                   | <input type="checkbox"/> |
| Nature protection                         | <input type="checkbox"/> |
| Other (please list): water management     |                          |

(d) What topics or subjects of cooperation are included in the agreement or arrangement?

**Procedural and institutional issues**

- |  |                                     |
|--|-------------------------------------|
| Dispute and conflict prevention and resolution | <input checked="" type="checkbox"/> |
| Institutional cooperation (joint bodies)       | <input checked="" type="checkbox"/> |
| Consultation on planned measures               | <input checked="" type="checkbox"/> |
| Mutual assistance                              | <input checked="" type="checkbox"/> |

**Topics of cooperation**

- |   |                                     |
|---|-------------------------------------|
| Joint vision and management objectives    | <input checked="" type="checkbox"/> |
| Joint significant water management issues | <input checked="" type="checkbox"/> |
| Navigation                                | <input checked="" type="checkbox"/> |



- 
- Human health
  - Environmental protection (ecosystem)
  - Water quality
  - Water quantity or allocation
  - Cooperation in addressing floods
  - Cooperation in addressing droughts
  - Climate change adaptation

**Monitoring and exchange**

- Joint assessments
- Data collection and exchange
- Joint monitoring
- Maintenance of joint pollution inventories
- Elaboration of joint water quality objectives
- Common early warning and alarm procedures
- Exchange of experience between riparian States
- Exchange of information on planned measures

**Joint planning and management**

- Development of joint regulations on specific topics
- Development of international or joint river, lake or aquifer basin management or action plans
- Management of shared infrastructure
- Development of shared infrastructure
- Other (*please list*): co-ordination of national WFD planning

(e) What are the main difficulties and challenges that your country faces with the agreement or arrangement and its implementation, if any?

- Aligning implementation of agreement or arrangement with national laws, policies and programmes
- Aligning implementation of agreement or arrangement with regional laws, policies and programmes
- Lack of financial resources
- Insufficient human capacity
- Insufficient technical capacity
- Tense diplomatic relations
- Non-participation of certain riparian countries in the agreement
- No significant difficulties
- Other (*please describe*): [fill in]

---

(f) What are the main achievements in implementing the agreement or arrangement and what were the keys to achieving such success?

implementation of the agreement, keys of success: political commitment, exchange of experience, direct contact and communication between the parties at different levels

(g) Please attach a copy of the agreement or arrangement or provide the web address of the document (*please attach document or insert web address, if applicable*):

<https://www.ris.bka.gv.at/Ergebnis.wxe?Abfrage=BgblPdf&Bgblnummer=714/1993&SucheNachTeilAlt=True>

3. Is your country a member of any joint body or mechanism for this agreement or arrangement?

Yes /No

*If no, why not? (please explain):* [fill in]

**Where there is a joint body or mechanism**

(a) If there is a joint body or mechanism, which kind of joint body or mechanism (*please tick one*)?

Plenipotentiaries

Bilateral commission

Basin or similar commission

Expert group meeting or meeting of national focal points

Other (*please describe*): [fill in]

(b) Does the joint body or mechanism cover the entire transboundary basin, sub-basin, part of a basin or group of basins?

Yes /No

(c) Which States (including your own) are members of the joint body or mechanism? (*Please list*): Austria, Slovenia

(d) Are there any riparian States that are not members of the joint body or mechanism? (*please list*): [fill in]

(e) If not all riparian States are members of the joint body or mechanism how does the joint body or mechanism cooperate with them?

No cooperation

They have observer status

Other (*please describe*): [fill in]

(f) Does the joint body or mechanism have any of the following features (*please tick the ones applicable*)?

A secretariat

*If the secretariat is a permanent one, is it a joint secretariat or does each country host its own secretariat? (Please describe):* [fill in]

A subsidiary body or bodies

*Please list (e.g., working groups on specific topics):*

- 
- working groups, expert group, if needed ad hoc task groups
- Other features (*please list*): [fill in]
- (g) What are the tasks and activities of this joint body or mechanism?<sup>22</sup>
- |   |                                     |
|---|-------------------------------------|
| Identification of pollution sources   | <input type="checkbox"/>            |
| Data collection and exchange  | <input checked="" type="checkbox"/> |
| Joint monitoring  | <input checked="" type="checkbox"/> |
| Maintenance of joint pollution inventories  | <input type="checkbox"/>            |
| Setting emission limits   | <input type="checkbox"/>            |
| Elaboration of joint water quality objectives   | <input checked="" type="checkbox"/> |
| Management and prevention of flood or drought risks   | <input checked="" type="checkbox"/> |
| Preparedness for extreme events, e.g., common early warning and alarm procedures                  | <input checked="" type="checkbox"/> |
| Surveillance and early warning of water related disease   | <input checked="" type="checkbox"/> |
| Water allocation and/or flow regulation   | <input checked="" type="checkbox"/> |
| Policy development  | <input checked="" type="checkbox"/> |
| Control of implementation   | <input checked="" type="checkbox"/> |
| Exchange of experience between riparian States  | <input checked="" type="checkbox"/> |
| Exchange of information on existing and planned uses of water and related installations           | <input checked="" type="checkbox"/> |
| Settling of differences and conflicts   | <input checked="" type="checkbox"/> |
| Consultations on planned measures   | <input checked="" type="checkbox"/> |
| Exchange of information on best available technology  | <input checked="" type="checkbox"/> |
| Participation in transboundary EIA  | <input type="checkbox"/>            |
| Development of river, lake or aquifer basin management or action plans                            | <input checked="" type="checkbox"/> |
| Management of shared infrastructure   | <input checked="" type="checkbox"/> |
| Addressing hydromorphological alterations   | <input checked="" type="checkbox"/> |
| Climate change adaptation   | <input checked="" type="checkbox"/> |
| Joint communication strategy  | <input type="checkbox"/>            |
| Basin-wide or joint public participation and consultation of, for example, basin management plans | <input type="checkbox"/>            |
| Joint resources to support transboundary cooperation  | <input type="checkbox"/>            |
| Capacity-building   | <input type="checkbox"/>            |
- Any other tasks (*please list*): [fill in]

---

<sup>22</sup> This may include tasks according to the agreement or tasks added by the joint body, or its subsidiaries. Both tasks which joint bodies coordinate and tasks which they implement should be included.

---

(h) What are the main difficulties and challenges that your country faces with the operation of the joint body or mechanism, if any?

Governance issues

*Please describe, if any:* [fill in]

Unexpected planning delays

*Please describe, if any:* [fill in]

Lack of resources

*Please describe, if true:* [fill in]

Lack of mechanism for implementing measures

*Please describe, if true:* [fill in]

Lack of effective measures

*Please describe, if true:* [fill in]

Unexpected extreme events

*Please describe, if any:* [fill in]

Lack of information and reliable forecasts

*Please describe, if any:* [fill in]

Others (*please list and describe, as appropriate*): [fill in]

(i) Does the joint body or mechanism, or its subsidiary bodies meet regularly?

Yes /No

If yes, how frequently does it meet?

More than once per year

Once per year

Less than once per year

(j) What are the main achievements with regards to the joint body or mechanism?  
effective water management, common projects

(k) Did the joint body or mechanism ever invite a non-riparian coastal State to cooperate?

Yes /No

*If yes, please give details. If no, why not, e.g. are the relevant coastal States also riparian States and therefore already members of the joint body or mechanism?* [fill in]

4. Have joint objectives, a common strategy, a joint or coordinated management plan or action plan been agreed for the basin, sub-basin, part of a basin or group of basins?

Yes /No

*If yes, please provide further details:* joint strategies, development programs. Objectives and strategies are results of bilateral agreements which are updated on a regular basis based on annual meetings of the bilateral commission and which are not available to public.

- 
5. How is the transboundary basin,–sub-basin, part of a basins or group of basins protected, including the protection of ecosystems, in the context of sustainable and rational water use?

Regulation of urbanization, deforestation, and sand and gravel extraction.

Environmental flow norms, including consideration of levels and seasonality

Water quality protection, e.g. nitrates, pesticides, faecal coliforms, heavy metals

Water-related species and habitats protection

Other measures (*please describe*): [fill in]

6. (a) Does your country regularly exchange information and data with other riparian States in the basin, sub-basin, part of a basin or group of basins?

Yes /No

- (b) If yes, how often:

More than once per year

Once per year

Less than once per year

- (c) Please describe how information is exchanged (e.g. in connection with meetings of joint bodies): within meetings of joint body

- (d) If yes, on what subjects are information and data exchanged?

Environmental conditions

Research activities and application of best available techniques

Emission monitoring data

Planned measures taken to prevent, control or reduce transboundary impacts

Point source pollution sources

Diffuse pollution sources

Existing hydromorphological alterations (dams, etc.)

Flows or water levels (including groundwater levels)

Water abstractions

Climatological information

Future planned measures with transboundary impacts, such as infrastructure development

Other subjects (*please list*):

Done by ICPDR and upon request, covering all environment data publically available

Other comments, e.g. spatial coverage of data and information exchange: [fill in]

(e) Is there a shared database or information platform?

Yes /No

(f) Is the database publicly available?

Yes /No

If yes, please provide the web address: [fill in]

(g) What are the main difficulties and challenges to data exchange, if applicable?

Frequency of exchanges

Timing of exchanges

Comparability of data and information

Limited spatial coverage

Inadequate resources (technical and/or financial)

Other (please describe): [fill in]

Additional comments: [fill in]

(h) What are the main benefits of data exchange on the basin, sub-basin, part of a basin or group of basins? (please describe): [fill in]

7. Do the riparian States carry out joint monitoring in the transboundary basin, sub-basin, part of a basin or group of basins?

Yes /No

(a) If yes, what does the joint monitoring cover?

	<i>Hydrological</i>	<i>Ecological</i>	<i>Chemical</i>
Border surface waters	<input checked="" type="checkbox"/>	<input checked="" type="checkbox"/>	<input checked="" type="checkbox"/>
Surface waters in the entire basin	<input type="checkbox"/>	<input type="checkbox"/>	<input type="checkbox"/>
Surface waters on the main watercourse	<input type="checkbox"/>	<input type="checkbox"/>	<input type="checkbox"/>
Surface waters in part of the basin please describe [fill in]	<input type="checkbox"/>	<input type="checkbox"/>	<input type="checkbox"/>
Transboundary aquifer(s) (connected or unconnected)	<input checked="" type="checkbox"/>	<input type="checkbox"/>	<input checked="" type="checkbox"/>
Aquifer(s) in the territory of one riparian hydraulically connected to a transboundary river or lake	<input checked="" type="checkbox"/>	<input type="checkbox"/>	<input checked="" type="checkbox"/>

(b) If joint monitoring is carried out, how is this done?

National monitoring stations connected through a network or common stations

Please describe: specific monitoring stations of national monitoring network are used, located in border rivers

Joint and agreed methodologies

---

*Please describe:* monitoring is performed based on requirements of WFD

Joint sampling

*Please describe:* location and frequency is agreed in bilateral commission

Common monitoring network

*Please describe:* monitoring stations are agreed in bilateral commission

Common agreed parameters

*Please describe:* parameters are agreed in bilateral commission

(c) Please describe the main achievements regarding joint monitoring, if any:  
continuous monitoring results available

(d) Please describe any difficulties experienced with joint monitoring: [fill in]

8. Do the riparian States carry out joint assessment of the transboundary basin, sub-basin, part of a basin or group of basins?

Yes /No

*If yes, please provide the date of the last or only assessment, the frequency and scope (e.g., surface waters or groundwaters only, pollution sources, etc.) of the assessment, and assessment methodology applied:*

at the regular meetings of the working groups, expert groups

9. Have the riparian States agreed to use joint water quality standards?

Yes /No

*If yes, what standards have been applied, e.g. international or regional standards (please specify which), or have national standards of the riparian States been applied?*

according to the Water Framework Directive

10. What are the measures implemented to prevent or limit the transboundary impact of accidental pollution?

Notification and communication

Coordinated or joint early warning or alarm system for accidental water pollution

Other (*please list*): [fill in]

No measures

*If not, why not? What difficulties does your country face in putting in place such measures?:* [fill in]

11. What are the measures implemented to prevent or limit the transboundary impact of extreme weather events and climate change?

Notification and communication

Coordinated or joint alarm system for floods

Coordinated or joint alarm system for droughts

Joint climate change adaptation strategy

Joint disaster risk reduction strategy

---

Other (*please list*): [fill in]

No measures

*If not, why not? What difficulties does your country face in putting in place such measures?:* [fill in]

12. Are procedures in place for mutual assistance in case of a critical situation?

Yes /No

*If yes, please provide a brief summary:* [fill in]

13. Are the public or relevant stakeholders involved in transboundary water management in the basin, sub-basin, part of a basin or group of basins?

Yes /No

*If yes, how? (please tick all applicable)*

Stakeholders have observer status in a joint body or mechanism

Stakeholders have an advisory role in the joint body

Stakeholders have a decision-making role in the joint body

*If yes, please specify the stakeholders for the joint body or mechanism:*  
[fill in]

Intergovernmental organizations

Private sectors organizations or associations

Water user groups or associations

Academic or research institutions

Other non-governmental organizations

General public

Other (*please specify*): [fill in]

Availability of information to the public

Consultation on planned measures or river basin management plans<sup>23</sup>

Public involvement

Other (*please specify*): [fill in]

---

<sup>23</sup> Or, where applicable, aquifer management plans.



---

**Bilateral Commission Austria-Slovenia (Morava-Commission)**

**Name of the transboundary basin,-sub-basin, part of a basin or group of basins:**

**Mura river basin upstream part within Austria and Slovenia**

List of the riparian States: [fill in]

**In the case of an aquifer, what is the nature of the aquifer and its relation with the river or lake basin:**

- Unconfined aquifer connected to a river or lake
- Unconfined aquifer with no or limited relation with surface water
- Confined aquifer connected to surface water
- Confined aquifer with no or limited relation with surface water
- Other
- Please describe: [fill in]
- Unknown

**Percentage of your country's territory within the basin, sub-basin, part of a basin or group of basins: 12,3%**

1. Is there one or more transboundary (bilateral or multilateral) agreement(s) or arrangement(s) on this basin, sub-basin, part of a basin or group of basins?

One or more agreements or arrangements exist and are in force

Agreement or arrangement developed but not in force

Agreement or arrangement developed, but not in force for all riparians

*Please insert the name of the agreement(s) or arrangement(s)*

1959 Treaty between Republic of Austria and Federal Peoples Republic of Yugoslavia concerning water management issues of Mura boarder and Mura boarder waters (Mura-Treaty)

Agreement or arrangement is under development

No agreement or arrangement

*If there is no agreement or arrangement or it is not in force, please explain briefly why not and provide information on any plans to address the situation: [fill in]*

**If there is no agreement or arrangement and no joint body or mechanism for the transboundary basin, sub-basin, part of a basin or group of basins then jump to question 4; if there is no agreement or arrangement, but a joint body or mechanism then go to question 3.**

**Questions 2 and 3 to be completed for each bilateral or multilateral agreement or arrangement in force in the transboundary basin, sub-basin, part of a basin or group of basins.**

2. (a) Does this agreement or arrangement specify the area subject to cooperation?

Yes /No

If yes, does it cover the entire basin or group of basins and all riparian States?

Yes /No

---

Additional explanations? **upstream part of Mura within Austria and Slovenia**

Or, if the agreement or arrangement relates to a sub-basin, does it cover the entire sub-basin?

Yes /No

Additional explanations? [fill in]

Which States (including your own) are bound by the agreement or arrangement?  
(Please list): Austria, Slovenia

(b) If the agreement or arrangement relates to a river or lake basin or sub-basin, does it also cover aquifers?

Yes /No

If yes, please list the aquifers covered by the agreement or arrangement: [see table 2]

(c) What is the sectoral scope of the agreement or arrangement?

- |                               |                                     |
|-------------------------------|-------------------------------------|
| All water uses                | <input checked="" type="checkbox"/> |
| A single water use or sector  | <input type="checkbox"/>            |
| Several water uses or sectors | <input type="checkbox"/>            |

If one or several water uses or sectors, please list (check as appropriate):

**Water uses or sectors**

- |   |                          |
|---|--------------------------|
| Industry                                  | <input type="checkbox"/> |
| Agriculture                               | <input type="checkbox"/> |
| Transport (e.g., navigation)              | <input type="checkbox"/> |
| Households                                | <input type="checkbox"/> |
| Energy: hydropower and other energy types | <input type="checkbox"/> |
| Fisheries                                 | <input type="checkbox"/> |
| Tourism                                   | <input type="checkbox"/> |
| Nature protection                         | <input type="checkbox"/> |
| Other (please list): water management     |                          |

(d) What topics or subjects of cooperation are included in the agreement or arrangement?

**Procedural and institutional issues**

- |  |                                     |
|--|-------------------------------------|
| Dispute and conflict prevention and resolution | <input checked="" type="checkbox"/> |
| Institutional cooperation (joint bodies)       | <input checked="" type="checkbox"/> |
| Consultation on planned measures               | <input checked="" type="checkbox"/> |
| Mutual assistance                              | <input checked="" type="checkbox"/> |

**Topics of cooperation**

- |   |                                     |
|---|-------------------------------------|
| Joint vision and management objectives    | <input checked="" type="checkbox"/> |
| Joint significant water management issues | <input checked="" type="checkbox"/> |
| Navigation                                | <input checked="" type="checkbox"/> |

- 
- Human health
  - Environmental protection (ecosystem)
  - Water quality
  - Water quantity or allocation
  - Cooperation in addressing floods
  - Cooperation in addressing droughts
  - Climate change adaptation

**Monitoring and exchange**

- Joint assessments
- Data collection and exchange
- Joint monitoring
- Maintenance of joint pollution inventories
- Elaboration of joint water quality objectives
- Common early warning and alarm procedures
- Exchange of experience between riparian States
- Exchange of information on planned measures

**Joint planning and management**

- Development of joint regulations on specific topics
- Development of international or joint river, lake or aquifer basin management or action plans
- Management of shared infrastructure
- Development of shared infrastructure
- Other (*please list*): co-ordination of national WFD planning

(e) What are the main difficulties and challenges that your country faces with the agreement or arrangement and its implementation, if any?

- Aligning implementation of agreement or arrangement with national laws, policies and programmes
- Aligning implementation of agreement or arrangement with regional laws, policies and programmes
- Lack of financial resources
- Insufficient human capacity
- Insufficient technical capacity
- Tense diplomatic relations
- Non-participation of certain riparian countries in the agreement
- No significant difficulties
- Other (*please describe*): [fill in]

---

(f) What are the main achievements in implementing the agreement or arrangement and what were the keys to achieving such success?

implementation of the agreement, keys of success: political commitment, exchange of experience, direct contact and communication between the parties at different levels

(g) Please attach a copy of the agreement or arrangement or provide the web address of the document (*please attach document or insert web address, if applicable*):

<https://www.ris.bka.gv.at/GeltendeFassung.wxe?Abfrage=Bundesnormen&Gesetzesnummer=10010277>

3. Is your country a member of any joint body or mechanism for this agreement or arrangement?

Yes /No

*If no, why not? (please explain):* [fill in]

**Where there is a joint body or mechanism**

(a) If there is a joint body or mechanism, which kind of joint body or mechanism (*please tick one*)?

Plenipotentiaries

Bilateral commission

Basin or similar commission

Expert group meeting or meeting of national focal points

Other (*please describe*): [fill in]

(b) Does the joint body or mechanism cover the entire transboundary basin, sub-basin, part of a basin or group of basins?

Yes /No

(c) Which States (including your own) are members of the joint body or mechanism? (*Please list*): Austria, Slovenia

(d) Are there any riparian States that are not members of the joint body or mechanism? (*please list*):

HR and HU are observer

(e) If not all riparian States are members of the joint body or mechanism how does the joint body or mechanism cooperate with them?

No cooperation

They have observer status

Other (*please describe*):

Hungary and Croatia are invited to send observers and add comments included in the minutes of the meetings of Mura Commission

(f) Does the joint body or mechanism have any of the following features (*please tick the ones applicable*)?

A secretariat

---

*If the secretariat is a permanent one, is it a joint secretariat or does each country host its own secretariat? (Please describe): [fill in]*

A subsidiary body or bodies

*Please list (e.g., working groups on specific topics):*

sub-commission, expert group, if needed ad hoc groups

Other features (*please list*): [fill in]

(g) What are the tasks and activities of this joint body or mechanism?<sup>24</sup>

Identification of pollution sources

Data collection and exchange

Joint monitoring

Maintenance of joint pollution inventories

Setting emission limits

Elaboration of joint water quality objectives

Management and prevention of flood or drought risks

Preparedness for extreme events, e.g., common early warning and alarm procedures

Surveillance and early warning of water related disease

Water allocation and/or flow regulation

Policy development

Control of implementation

Exchange of experience between riparian States

Exchange of information on existing and planned uses of water and related installations

Settling of differences and conflicts

Consultations on planned measures

Exchange of information on best available technology

Participation in transboundary EIA

Development of river, lake or aquifer basin management or action plans

Management of shared infrastructure

Addressing hydromorphological alterations

Climate change adaptation

Joint communication strategy

Basin-wide or joint public participation and consultation of,

---

<sup>24</sup> This may include tasks according to the agreement or tasks added by the joint body, or its subsidiaries. Both tasks which joint bodies coordinate and tasks which they implement should be included.

---

for example, basin management plans

Joint resources to support transboundary cooperation

Capacity-building

Any other tasks (*please list*): co-ordination of national WFD planning

(h) What are the main difficulties and challenges that your country faces with the operation of the joint body or mechanism, if any?

Governance issues

*Please describe, if any:* [fill in]

Unexpected planning delays

*Please describe, if any:* [fill in]

Lack of resources

*Please describe, if true:* [fill in]

Lack of mechanism for implementing measures

*Please describe, if true:* [fill in]

Lack of effective measures

*Please describe, if true:* [fill in]

Unexpected extreme events

*Please describe, if any:* [fill in]

Lack of information and reliable forecasts

*Please describe, if any:* [fill in]

Others (*please list and describe, as appropriate*): [fill in]

(i) Does the joint body or mechanism, or its subsidiary bodies meet regularly?

Yes /No

If yes, how frequently does it meet?

More than once per year

Once per year

Less than once per year

(j) What are the main achievements with regards to the joint body or mechanism?

effective water management, common projects

(k) Did the joint body or mechanism ever invite a non-riparian coastal State to cooperate?

Yes /No

*If yes, please give details. If no, why not, e.g. are the relevant coastal States also riparian States and therefore already members of the joint body or mechanism?* [fill in]

4. Have joint objectives, a common strategy, a joint or coordinated management plan or action plan been agreed for the basin, sub-basin, part of a basin or group of basins?

Yes /No

*If yes, please provide further details:* joint strategies, development programs. Objectives and strategies are results of bilateral agreements which are updated on a regular basis based on annual meetings of the bilateral commission and which are not available to public.

5. How is the transboundary basin, sub-basin, part of a basins or group of basins protected, including the protection of ecosystems, in the context of sustainable and rational water use?

Regulation of urbanization, deforestation, and sand and gravel extraction.

Environmental flow norms, including consideration of levels and seasonality

Water quality protection, e.g. nitrates, pesticides, faecal coliforms, heavy metals

Water-related species and habitats protection

Other measures (*please describe*): [fill in]

6. (a) Does your country regularly exchange information and data with other riparian States in the basin, sub-basin, part of a basin or group of basins?

Yes /No

- (b) If yes, how often:

More than once per year

Once per year

Less than once per year

- (c) Please describe how information is exchanged (e.g. in connection with meetings of joint bodies): within meetings of joint bodies

- (d) If yes, on what subjects are information and data exchanged?

Environmental conditions

Research activities and application of best available techniques

Emission monitoring data

Planned measures taken to prevent, control or reduce transboundary impacts

Point source pollution sources

Diffuse pollution sources

Existing hydromorphological alterations (dams, etc.)

Flows or water levels (including groundwater levels)

Water abstractions

Climatological information

Future planned measures with transboundary impacts, such as infrastructure development

Other subjects (*please list*):

Done by ICPDR and upon request, covering all environment data publically available

Other comments, e.g. spatial coverage of data and information exchange: [fill in]

(e) Is there a shared database or information platform?

Yes /No

(f) Is the database publicly available?

Yes /No

If yes, please provide the web address: [fill in]

(g) What are the main difficulties and challenges to data exchange, if applicable?

Frequency of exchanges

Timing of exchanges

Comparability of data and information

Limited spatial coverage

Inadequate resources (technical and/or financial)

Other (*please describe*): [fill in]

Additional comments: [fill in]

(h) What are the main benefits of data exchange on the basin, sub-basin, part of a basin or group of basins? (*please describe*): [fill in]

7. Do the riparian States carry out joint monitoring in the transboundary basin, sub-basin, part of a basin or group of basins?

Yes /No

(a) If yes, what does the joint monitoring cover?

	<i>Hydrological</i>	<i>Ecological</i>	<i>Chemical</i>
Border surface waters	<input checked="" type="checkbox"/>	<input checked="" type="checkbox"/>	<input checked="" type="checkbox"/>
Surface waters in the entire basin	<input type="checkbox"/>	<input type="checkbox"/>	<input type="checkbox"/>
Surface waters on the main watercourse	<input type="checkbox"/>	<input type="checkbox"/>	<input type="checkbox"/>
Surface waters in part of the basin please describe [fill in]	<input type="checkbox"/>	<input type="checkbox"/>	<input type="checkbox"/>
Transboundary aquifer(s) (connected or unconnected)	<input checked="" type="checkbox"/>	<input type="checkbox"/>	<input checked="" type="checkbox"/>
Aquifer(s) in the territory of one riparian hydraulically connected to a transboundary river or lake	<input checked="" type="checkbox"/>	<input type="checkbox"/>	<input checked="" type="checkbox"/>

(b) If joint monitoring is carried out, how is this done?

National monitoring stations connected through a network



- 
- or common stations
- Please describe:* specific monitoring stations of national monitoring network are used, located in border rivers
- Joint and agreed methodologies
- Please describe:* monitoring is performed based on requirements of the WFD
- Joint sampling
- Please describe:* location and frequency of joint sampling is agreed in bilateral commission
- Common monitoring network
- Please describe:* monitoring stations are agreed in bilateral commission
- Common agreed parameters
- Please describe:* parameters are agreed in bilateral commission
- (c) Please describe the main achievements regarding joint monitoring, if any: continuous monitoring results available
- (d) Please describe any difficulties experienced with joint monitoring: [fill in]
8. Do the riparian States carry out joint assessment of the transboundary basin, sub-basin, part of a basin or group of basins?
- Yes /No
- If yes, please provide the date of the last or only assessment, the frequency and scope (e.g., surface waters or groundwaters only, pollution sources, etc.) of the assessment, and assessment methodology applied:*
- at the regular meetings of the subcommission, expert group
9. Have the riparian States agreed to use joint water quality standards?
- Yes /No
- If yes, what standards have been applied, e.g. international or regional standards (please specify which), or have national standards of the riparian States been applied?*
- according to the Water Framework Directive
10. What are the measures implemented to prevent or limit the transboundary impact of accidental pollution?
- Notification and communication
- Coordinated or joint early warning or alarm system for accidental water pollution
- Other (*please list*): [fill in]
- No measures
- If not, why not? What difficulties does your country face in putting in place such measures?:* [fill in]
11. What are the measures implemented to prevent or limit the transboundary impact of extreme weather events and climate change?

- 
- Notification and communication
  - Coordinated or joint alarm system for floods
  - Coordinated or joint alarm system for droughts
  - Joint climate change adaptation strategy
  - Joint disaster risk reduction strategy
  - Other (*please list*): [fill in]
  - No measures
  - If not, why not? What difficulties does your country face in putting in place such measures?:* [fill in]

12. Are procedures in place for mutual assistance in case of a critical situation?

Yes /No

*If yes, please provide a brief summary:* [fill in]

13. Are the public or relevant stakeholders involved in transboundary water management in the basin, sub-basin, part of a basin or group of basins?

Yes /No

*If yes, how? (please tick all applicable)*

Stakeholders have observer status in a joint body or mechanism

Stakeholders have an advisory role in the joint body

Stakeholders have a decision-making role in the joint body

*If yes, please specify the stakeholders for the joint body or mechanism:*  
[fill in]

Intergovernmental organizations

Private sectors organizations or associations

Water user groups or associations

Academic or research institutions

Other non-governmental organizations

General public

Other (please specify): [fill in]

Availability of information to the public

Consultation on planned measures or river basin management plans<sup>25</sup>

Public involvement

Other (*please specify*): [fill in]

---

<sup>25</sup> Or, where applicable, aquifer management plans.

---

**Multilateral Commission Lake Constance**

**Name of the transboundary basin,-sub-basin, part of a basin or group of basins: Lake Constance**

List of the riparian States:

Austria, Germany (Federal State of Bavaria and Federal State of Baden-Wuerttemberg), Switzerland

**In the case of an aquifer, what is the nature of the aquifer and its relation with the river or lake basin:**

- Unconfined aquifer connected to a river or lake
- Unconfined aquifer with no or limited relation with surface water
- Confined aquifer connected to surface water
- Confined aquifer with no or limited relation with surface water
- Other
- Please describe: [fill in]
- Unknown

**Percentage of your country's territory within the basin, sub-basin, part of a basin or group of basins: 2,8%**

1. Is there one or more transboundary (bilateral or multilateral) agreement(s) or arrangement(s) on this basin, sub-basin, part of a basin or group of basins?

- One or more agreements or arrangements exist and are in force
- Agreement or arrangement developed but not in force
- Agreement or arrangement developed, but not in force for all riparians

*Please insert the name of the agreement(s) or arrangement(s)*

1961 Agreement on the protection of the Lake Constance against pollution

- Agreement or arrangement is under development
- No agreement or arrangement

*If there is no agreement or arrangement or it is not in force, please explain briefly why not and provide information on any plans to address the situation: [fill in]*

**If there is no agreement or arrangement and no joint body or mechanism for the transboundary basin, sub-basin, part of a basin or group of basins then jump to question 4; if there is no agreement or arrangement, but a joint body or mechanism then go to question 3.**

**Questions 2 and 3 to be completed for each bilateral or multilateral agreement or arrangement in force in the transboundary basin, sub-basin, part of a basin or group of basins.**

2. (a) Does this agreement or arrangement specify the area subject to cooperation?

Yes /No

If yes, does it cover the entire basin or group of basins and all riparian States?

Yes /No

---

Additional explanations? Agreement covers the Lake Constance

Or, if the agreement or arrangement relates to a sub-basin, does it cover the entire sub-basin?

Yes /No

Additional explanations? [fill in]

Which States (including your own) are bound by the agreement or arrangement?  
(Please list):

Austria, Federal States of Bavaria and Baden-Wuerttemberg (German Federal States),  
Switzerland

(b) If the agreement or arrangement relates to a river or lake basin or sub-basin,  
does it also cover aquifers?

Yes /No

If yes, please list the aquifers covered by the agreement or arrangement: [fill in]

(c) What is the sectoral scope of the agreement or arrangement?

- |                               |                                     |
|-------------------------------|-------------------------------------|
| All water uses                | <input checked="" type="checkbox"/> |
| A single water use or sector  | <input type="checkbox"/>            |
| Several water uses or sectors | <input type="checkbox"/>            |

If one or several water uses or sectors, please list (check as appropriate):

**Water uses or sectors**

- |   |                          |
|---|--------------------------|
| Industry                                  | <input type="checkbox"/> |
| Agriculture                               | <input type="checkbox"/> |
| Transport (e.g., navigation)              | <input type="checkbox"/> |
| Households                                | <input type="checkbox"/> |
| Energy: hydropower and other energy types | <input type="checkbox"/> |
| Fisheries                                 | <input type="checkbox"/> |
| Tourism                                   | <input type="checkbox"/> |
| Nature protection                         | <input type="checkbox"/> |
| Other (please list): [fill in]            |                          |

(d) What topics or subjects of cooperation are included in the agreement or arrangement?

**Procedural and institutional issues**

- |  |                                     |
|--|-------------------------------------|
| Dispute and conflict prevention and resolution | <input type="checkbox"/>            |
| Institutional cooperation (joint bodies)       | <input checked="" type="checkbox"/> |
| Consultation on planned measures               | <input checked="" type="checkbox"/> |
| Mutual assistance                              | <input checked="" type="checkbox"/> |

**Topics of cooperation**

- |  |                                     |
|--|-------------------------------------|
| Joint vision and management objectives | <input checked="" type="checkbox"/> |
|--|-------------------------------------|

- 
- Joint significant water management issues
  - Navigation
  - Human health
  - Environmental protection (ecosystem)
  - Water quality
  - Water quantity or allocation
  - Cooperation in addressing floods
  - Cooperation in addressing droughts
  - Climate change adaptation
  - Monitoring and exchange**
  - Joint assessments
  - Data collection and exchange
  - Joint monitoring
  - Maintenance of joint pollution inventories
  - Elaboration of joint water quality objectives
  - Common early warning and alarm procedures
  - Exchange of experience between riparian States
  - Exchange of information on planned measures
  - Joint planning and management**
  - Development of joint regulations on specific topics
  - Development of international or joint river, lake or aquifer basin management or action plans
  - Management of shared infrastructure
  - Development of shared infrastructure
  - Other (*please list*): [fill in]

(e) What are the main difficulties and challenges that your country faces with the agreement or arrangement and its implementation, if any?

- Aligning implementation of agreement or arrangement with national laws, policies and programmes
- Aligning implementation of agreement or arrangement with regional laws, policies and programmes
- Lack of financial resources
- Insufficient human capacity
- Insufficient technical capacity
- Tense diplomatic relations
- Non-participation of certain riparian countries in the agreement
- No significant difficulties

---

Other (*please describe*): [fill in]

(f) What are the main achievements in implementing the agreement or arrangement and what were the keys to achieving such success?

The main has been significant improvement in the ecological and chemical quality of the lake. This has been achieved through both measures to reduce pollution and lake restoration measures. Next to this, improvements include the exchange of data and information between the parties and alignment of measures and plans in the riparian countries. Key to this success has been close cooperation at technical level and the subsequent building of trust as well as mutual understanding among the countries.

(g) Please attach a copy of the agreement or arrangement or provide the web address of the document (*please attach document or insert web address, if applicable*):

<https://www.ris.bka.gv.at/GeltendeFassung.wxe?Abfrage=Bundesnormen&Gesetzesnummer=10010304>

<http://www.igkb.org/die-igkb-internationale-gewaesserschutz-kommission-fuer-den-bodensee/uebereinkommen-ueber-den-schutz-des-bodensees-gegen-verunreinigung/>

3. Is your country a member of any joint body or mechanism for this agreement or arrangement?

Yes /No

*If no, why not? (please explain):* [fill in]

**Where there is a joint body or mechanism**

(a) If there is a joint body or mechanism, which kind of joint body or mechanism (*please tick one*)?

Plenipotentiaries

Bilateral commission

Basin or similar commission

Expert group meeting or meeting of national focal points

Other (*please describe*): [fill in]

(b) Does the joint body or mechanism cover the entire transboundary basin, sub-basin, part of a basin or group of basins?

Yes /No

(c) Which States (including your own) are members of the joint body or mechanism? (*Please list*):

Austria, Germany (Federal State of Bavaria and Federal State of Baden-Wuerttemberg), Switzerland

(d) Are there any riparian States that are not members of the joint body or mechanism? (*please list*): [fill in]

(e) If not all riparian States are members of the joint body or mechanism how does the joint body or mechanism cooperate with them?

No cooperation

They have observer status

Other (please describe): [fill in]

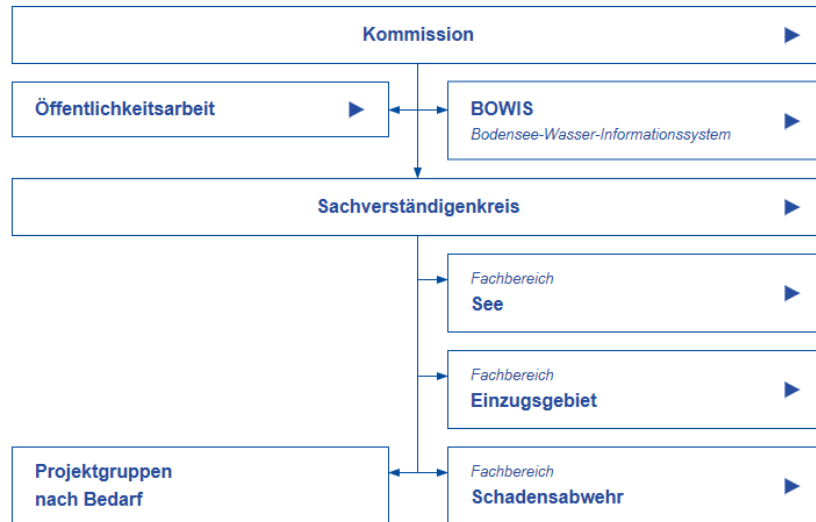
(f) Does the joint body or mechanism have any of the following features (please tick the ones applicable)?

A secretariat

If the secretariat is a permanent one, is it a joint secretariat or does each country host its own secretariat? (Please describe): [fill in]

A subsidiary body or bodies

Please list (e.g., working groups on specific topics):



Other features (please list):

Regular ministerial conferences

(g) What are the tasks and activities of this joint body or mechanism?<sup>26</sup>

Identification of pollution sources

Data collection and exchange

Joint monitoring

Maintenance of joint pollution inventories

Setting emission limits

Elaboration of joint water quality objectives

Management and prevention of flood or drought risks

Preparedness for extreme events, e.g., common early warning and alarm procedures

Surveillance and early warning of water related disease

Water allocation and/or flow regulation

<sup>26</sup> This may include tasks according to the agreement or tasks added by the joint body, or its subsidiaries. Both tasks which joint bodies coordinate and tasks which they implement should be included.

---

Policy development	<input checked="" type="checkbox"/>
Control of implementation	<input checked="" type="checkbox"/>
Exchange of experience between riparian States	<input checked="" type="checkbox"/>
Exchange of information on existing and planned uses of water and related installations	<input checked="" type="checkbox"/>
Settling of differences and conflicts	<input checked="" type="checkbox"/>
Consultations on planned measures	<input checked="" type="checkbox"/>
Exchange of information on best available technology	<input checked="" type="checkbox"/>
Participation in transboundary EIA	<input type="checkbox"/>
Development of river, lake or aquifer basin management or action plans	<input checked="" type="checkbox"/>
Management of shared infrastructure	<input type="checkbox"/>
Addressing hydromorphological alterations	<input checked="" type="checkbox"/>
Climate change adaptation	<input checked="" type="checkbox"/>
Joint communication strategy	<input type="checkbox"/>
Basin-wide or joint public participation and consultation of, for example, basin management plans	<input type="checkbox"/>
Joint resources to support transboundary cooperation	<input checked="" type="checkbox"/>
Capacity-building	<input checked="" type="checkbox"/>

Any other tasks (*please list*):

There is no joint communication strategy as such, but elements of it as joint brochures and reports on the tasks and results of the ICPR/CC, joint press releases, interviews in media

(h) What are the main difficulties and challenges that your country faces with the operation of the joint body or mechanism, if any?

Governance issues	<input type="checkbox"/>
<i>Please describe, if any:</i> [fill in]	
Unexpected planning delays	<input type="checkbox"/>
<i>Please describe, if any:</i> [fill in]	
Lack of resources	<input type="checkbox"/>
<i>Please describe, if true:</i> [fill in]	
Lack of mechanism for implementing measures	<input type="checkbox"/>
<i>Please describe, if true:</i> [fill in]	
Lack of effective measures	<input type="checkbox"/>
<i>Please describe, if true:</i> [fill in]	
Unexpected extreme events	<input type="checkbox"/>
<i>Please describe, if any:</i> [fill in]	
Lack of information and reliable forecasts	<input type="checkbox"/>



---

Please describe, if any: [fill in]

Others (please list and describe, as appropriate): [fill in]

(i) Does the joint body or mechanism, or its subsidiary bodies meet regularly?

Yes /No

If yes, how frequently does it meet?

More than once per year

Once per year

Less than once per year

(j) What are the main achievements with regards to the joint body or mechanism?

See 2.f

(k) Did the joint body or mechanism ever invite a non-riparian coastal State to cooperate?

Yes /No

If yes, please give details. If no, why not, e.g. are the relevant coastal States also riparian States and therefore already members of the joint body or mechanism?

Germany as coastal state is invited to participate the commission meetings as observer.

Contacts exist with OSPAR Convention and Baltic Sea Convention.

4. Have joint objectives, a common strategy, a joint or coordinated management plan or action plan been agreed for the basin, sub-basin, part of a basin or group of basins?

Yes /No

If yes, please provide further details:

Joint guidance on different water uses, see [http://www.igkb.org/fileadmin/user\\_upload/dokumente/publikationen/vorschriften/Bodensee-Richtlinien\\_2005\\_2015.pdf](http://www.igkb.org/fileadmin/user_upload/dokumente/publikationen/vorschriften/Bodensee-Richtlinien_2005_2015.pdf)

5. How is the transboundary basin, sub-basin, part of a basins or group of basins protected, including the protection of ecosystems, in the context of sustainable and rational water use?

Regulation of urbanization, deforestation, and sand and gravel extraction.

Environmental flow norms, including consideration of levels and seasonality

Water quality protection, e.g. nitrates, pesticides, faecal coliforms, heavy metals

Water-related species and habitats protection

Other measures (please describe): [fill in]

6. (a) Does your country regularly exchange information and data with other riparian States in the basin, sub-basin, part of a basin or group of basins?

Yes /No

(b) If yes, how often:

- More than once per year
- Once per year
- Less than once per year

(c) Please describe how information is exchanged (e.g. in connection with meetings of joint bodies): with meeting of joint body

(d) If yes, on what subjects are information and data exchanged?

- Environmental conditions
- Research activities and application of best available techniques
- Emission monitoring data
- Planned measures taken to prevent, control or reduce transboundary impacts
- Point source pollution sources
- Diffuse pollution sources
- Existing hydromorphological alterations (dams, etc.)
- Flows or water levels (including groundwater levels)
- Water abstractions
- Climatological information
- Future planned measures with transboundary impacts, such as infrastructure development

Other subjects (*please list*): [fill in]

Other comments, e.g. spatial coverage of data and information exchange: [fill in]

(e) Is there a shared database or information platform?

Yes /No

(f) Is the database publicly available?

Yes /No

*If yes, please provide the web address:*

<https://www.igkb.org/aktuelles/bodensee-wasser-informationssystem-bowis/>

Data of the data base is used to produce a yearly report available to public:

<https://www.igkb.org/oeffentlichkeitsarbeit/limnologischer-zustand-des-sees-gruene-berichte/>

(g) What are the main difficulties and challenges to data exchange, if applicable?

- Frequency of exchanges
- Timing of exchanges
- Comparability of data and information
- Limited spatial coverage
- Inadequate resources (technical and/or financial)
- Other (*please describe*): [fill in]

Additional comments: [fill in]

(h) What are the main benefits of data exchange on the basin, sub-basin, part of a basin or group of basins? (*please describe*):

Better overview on the whole lake, comparability, improved possibilities for early warning and alarm system, improved understanding of other countries' issues and problems

7. Do the riparian States carry out joint monitoring in the transboundary basin, sub-basin, part of a basin or group of basins?

Yes /No

(a) If yes, what does the joint monitoring cover?

	<i>Hydrological</i>	<i>Ecological</i>	<i>Chemical</i>
Border surface waters	<input type="checkbox"/>	<input type="checkbox"/>	<input type="checkbox"/>
Surface waters in the entire basin	<input checked="" type="checkbox"/>	<input checked="" type="checkbox"/>	<input checked="" type="checkbox"/>
Surface waters on the main watercourse	<input type="checkbox"/>	<input type="checkbox"/>	<input type="checkbox"/>
Surface waters in part of the basin please describe [fill in]	<input type="checkbox"/>	<input type="checkbox"/>	<input type="checkbox"/>
Transboundary aquifer(s) (connected or unconnected)	<input type="checkbox"/>	<input type="checkbox"/>	<input type="checkbox"/>
Aquifer(s) in the territory of one riparian hydraulically connected to a transboundary river or lake	<input type="checkbox"/>	<input type="checkbox"/>	<input type="checkbox"/>

(b) If joint monitoring is carried out, how is this done?

National monitoring stations connected through a network or common stations

*Please describe:* for details please consult:  
<https://www.igkb.org/aktuelles/bodensee-wasser-informationssystem-bowis/>

Joint and agreed methodologies

*Please describe:* [fill in]

Joint sampling

*Please describe:* [fill in]

Common monitoring network

*Please describe:* [fill in]

Common agreed parameters

*Please describe:* [fill in]

(c) Please describe the main achievements regarding joint monitoring, if any:

The long-term cooperation yields in long time series of chemical and biological parameters, that enable joint trend analyses and joint conclusions on the trends.

---

(d) Please describe any difficulties experienced with joint monitoring:

Deciding upon parameters and methodologies, and assuring comparability of data

8. Do the riparian States carry out joint assessment of the transboundary basin, sub-basin, part of a basin or group of basins?

Yes /No

*If yes, please provide the date of the last or only assessment, the frequency and scope (e.g., surface waters or groundwaters only, pollution sources, etc.) of the assessment, and assessment methodology applied:*

Annual Limnological assessment reports  
(<http://www.igkb.org/publikationen/limnologischer-zustand-des-sees-gruene-berichte/>)

9. Have the riparian States agreed to use joint water quality standards?

Yes /No

*If yes, what standards have been applied, e.g. international or regional standards (please specify which), or have national standards of the riparian States been applied?*

based on EU Water legislation

10. What are the measures implemented to prevent or limit the transboundary impact of accidental pollution?

Notification and communication

Coordinated or joint early warning or alarm system for accidental water pollution

Other (*please list*): [fill in]

No measures

*If not, why not? What difficulties does your country face in putting in place such measures?:* [fill in]

11. What are the measures implemented to prevent or limit the transboundary impact of extreme weather events and climate change?

Notification and communication

Coordinated or joint alarm system for floods

Coordinated or joint alarm system for droughts

Joint climate change adaptation strategy

Joint disaster risk reduction strategy

Other (*please list*): [fill in]

No measures

*If not, why not? What difficulties does your country face in putting in place such measures?:* [fill in]

12. Are procedures in place for mutual assistance in case of a critical situation?

Yes /No

*If yes, please provide a brief summary:* [fill in]

---

13. Are the public or relevant stakeholders involved in transboundary water management in the basin, sub-basin, part of a basin or group of basins?

Yes /No

*If yes, how? (please tick all applicable)*

Stakeholders have observer status in a joint body or mechanism

Stakeholders have an advisory role in the joint body

Stakeholders have a decision-making role in the joint body

*If yes, please specify the stakeholders for the joint body or mechanism:*  
[fill in]

Intergovernmental organizations

Private sectors organizations or associations

Water user groups or associations

Academic or research institutions

Other non-governmental organizations

General public

Other (please specify): [fill in]

Availability of information to the public

Consultation on planned measures or river basin management plans<sup>27</sup>

Public involvement

Other (please specify): [fill in]

---

<sup>27</sup> Or, where applicable, aquifer management plans.

---

## Multilateral Commission Danube River

**Name of the transboundary basin,-sub-basin, part of a basin or group of basins:**

**Danube river basin**

List of the riparian States:

Austria, Bosnia-Herzegovina, Bulgaria, Croatia, Czech Republic, Germany, Hungary, Moldova, Montenegro, Romania, Serbia, Slovakia, Slovenia, Ukraine (Parties to the treaty) and Albania, Italy, North Macedonia, Poland and Switzerland (Non-Parties, but small parts of the basin)

**In the case of an aquifer, what is the nature of the aquifer and its relation with the river or lake basin:**

- Unconfined aquifer connected to a river or lake
- Unconfined aquifer with no or limited relation with surface water
- Confined aquifer connected to surface water
- Confined aquifer with no or limited relation with surface water
- Other

Please describe:

Unknown

**Percentage of your country's territory within the basin, sub-basin, part of a basin or group of basins:** 96% of Austrian territory located in DRB, 10.05% share of DRB

1. Is there one or more transboundary (bilateral or multilateral) agreement(s) or arrangement(s) on this basin, sub-basin, part of a basin or group of basins?

- One or more agreements or arrangements exist and are in force
- Agreement or arrangement developed but not in force
- Agreement or arrangement developed, but not in force for all riparians

*Please insert the name of the agreement(s) or arrangement(s)*

1994 Convention on Co-operation for the Protection and Sustainable use of the Danube River (Danube River Protection Convention)<sup>28</sup>

- Agreement or arrangement is under development
- No agreement or arrangement

*If there is no agreement or arrangement or it is not in force, please explain briefly why not and provide information on any plans to address the situation: [fill in]*

**If there is no agreement or arrangement and no joint body or mechanism for the transboundary basin, sub-basin, part of a basin or group of basins then jump to question 4; if there is no agreement or arrangement, but a joint body or mechanism then go to question 3.**

**Questions 2 and 3 to be completed for each bilateral or multilateral agreement or arrangement in force in the transboundary basin, sub-basin, part of a basin or group of basins.**

---

<sup>28</sup> <https://www.icpdr.org/main/sites/default/files/DRPC%20English%20ver.pdf>

---

2. (a) Does this agreement or arrangement specify the area subject to cooperation?

Yes /No

If yes, does it cover the entire basin or group of basins and all riparian States?

Yes /No

Additional explanations?

Countries with small parts of the basin (less than 2.000 km<sup>2</sup>) are not part of the agreement

Or, if the agreement or arrangement relates to a sub-basin, does it cover the entire sub-basin?

Yes /No

Additional explanations? [fill in]

Which States (including your own) are bound by the agreement or arrangement?  
(Please list):

Austria, Bosnia and Herzegovina, Bulgaria, Croatia, Czech Republic, Germany, Hungary, Moldova, Montenegro, Romania, Serbia, Slovakia, Slovenia, Ukraine

(b) If the agreement or arrangement relates to a river or lake basin or sub-basin, does it also cover aquifers?

Yes /No

If yes, please list the aquifers covered by the agreement or arrangement:

Transboundary groundwater bodies

See Annex 8 of DRBMP 2015  
(<http://www.icpdr.org/flowpaper/viewer/default/files/nodes/documents/dr bmp-update2015-annexes.pdf>)

(c) What is the sectoral scope of the agreement or arrangement?

All water uses

A single water use or sector

Several water uses or sectors

If one or several water uses or sectors, please list (check as appropriate):

**Water uses or sectors**

Industry

Agriculture

Transport (e.g., navigation)

Households

Energy: hydropower and other energy types

Fisheries

Tourism

Nature protection

Other (please list): [fill in]

---

(d) What topics or subjects of cooperation are included in the agreement or arrangement?

**Procedural and institutional issues**

- Dispute and conflict prevention and resolution
- Institutional cooperation (joint bodies)
- Consultation on planned measures
- Mutual assistance

**Topics of cooperation**

- Joint vision and management objectives
- Joint significant water management issues
- Navigation
- Human health
- Environmental protection (ecosystem)
- Water quality
- Water quantity or allocation
- Cooperation in addressing floods
- Cooperation in addressing droughts
- Climate change adaptation

**Monitoring and exchange**

- Joint assessments
- Data collection and exchange
- Joint monitoring
- Maintenance of joint pollution inventories
- Elaboration of joint water quality objectives
- Common early warning and alarm procedures
- Exchange of experience between riparian States
- Exchange of information on planned measures

**Joint planning and management**

- Development of joint regulations on specific topics
- Development of international or joint river, lake or aquifer basin management or action plans
- Management of shared infrastructure
- Development of shared infrastructure
- Other (*please list*):



---

Concerning navigation cooperation exists between the ICPDR and the Danube Commission<sup>29</sup> based on the Joint Statement for the Development of Inland Navigation and Environmental Protection<sup>30</sup>

(e) What are the main difficulties and challenges that your country faces with the agreement or arrangement and its implementation, if any?

Aligning implementation of agreement or arrangement with national laws, policies and programmes

Aligning implementation of agreement or arrangement with regional laws, policies and programmes

Lack of financial resources

Insufficient human capacity

Insufficient technical capacity

Tense diplomatic relations

Non-participation of certain riparian countries in the agreement

No significant difficulties

Other (*please describe*): [fill in]

(f) What are the main achievements in implementing the agreement or arrangement and what were the keys to achieving such success?

The main concrete achievements of ICPDR have been to provide a platform for joint and focused actions, for political decisions, for cooperation and exchange of experience, for awareness raising and for convening on agreements across sectors.

These joint efforts coordinated and focused by ICPDR have resulted in improved ecological and chemical quality of the water of the Danube. Also, the flood management has improved. Concrete results of ICPDR are the adoption of River Basin Management and Flood Risk Management Plans covering the entire catchment of the Danube, , a Transnational Monitoring Network, an Early Warning Network, a Strategy for adaptation to climate change, a Joint Statement on Navigation as well as Guiding Principles on Sustainable Hydropower, just to name some of the major achievements.

Key to this success has been good cooperation at technical and political level and the subsequent building of trust as well as mutual understanding among the countries in the river basin.

(g) Please attach a copy of the agreement or arrangement or provide the web address of the document (*please attach document or insert web address, if applicable*):

<https://www.icpdr.org/main/sites/default/files/DRPC%20English%20ver.pdf>

3. Is your country a member of any joint body or mechanism for this agreement or arrangement?

Yes /No

*If no, why not? (please explain):* [fill in]

---

<sup>29</sup> [http://www.danubecommission.org/index.php/de\\_DE/index](http://www.danubecommission.org/index.php/de_DE/index)

<sup>30</sup> <https://www.icpdr.org/main/activities-projects/joint-statement-navigation-environment>

---

**Where there is a joint body or mechanism**

(a) If there is a joint body or mechanism, which kind of joint body or mechanism (please tick one)?

Plenipotentiaries

Bilateral commission

Basin or similar commission

Expert group meeting or meeting of national focal points

Other (please describe): [fill in]

(b) Does the joint body or mechanism cover the entire transboundary basin, sub-basin, part of a basin or group of basins?

Yes /No

(c) Which States (including your own) are members of the joint body or mechanism? (Please list):

Austria, Bosnia and Herzegovina, Bulgaria, Croatia, Czech Republic, Germany, Hungary, Moldova, Montenegro, Romania, Serbia, Slovakia, Slovenia, Ukraine

(d) Are there any riparian States that are not members of the joint body or mechanism? (please list):

Countries with less than 2.000 km<sup>2</sup> are not part of the joint body (Albania, Italy, North Macedonia, Poland and Switzerland).

(e) If not all riparian States are members of the joint body or mechanism how does the joint body or mechanism cooperate with them?

No cooperation

They have observer status

Other (please describe): Their share of the basin is very small, thus cooperation not needed.

(f) Does the joint body or mechanism have any of the following features (please tick the ones applicable)?

A secretariat

If the secretariat is a permanent one, is it a joint secretariat or does each country host its own secretariat? (Please describe):

Permanent joint secretariat

A subsidiary body or bodies

Please list (e.g., working groups on specific topics):

- Ad-hoc strategic expert group (S EG)
- Flood protection expert group (FP EG)
- Accident prevention & control expert group (APC EG)
- Monitoring and assessment expert group (MA EG)
- o Groundwater task group (GW TG)
- Pressures and measures expert group (PM EG)

- o Nutrient task group (N TG)
- River basin management expert group (RBM EG)
- o Hydromorphology task group (HYMO TG)
- o Economics task group (ECON TG)
- Public participation expert group (PP EG)
- Information management & GIS expert group (IMGIS EG)

Other features (*please list*): [fill in]

(g) What are the tasks and activities of this joint body or mechanism?<sup>31</sup>

- |   |                                     |
|---|-------------------------------------|
| Identification of pollution sources   | <input checked="" type="checkbox"/> |
| Data collection and exchange  | <input checked="" type="checkbox"/> |
| Joint monitoring  | <input checked="" type="checkbox"/> |
| Maintenance of joint pollution inventories  | <input checked="" type="checkbox"/> |
| Setting emission limits   | <input type="checkbox"/>            |
| Elaboration of joint water quality objectives   | <input type="checkbox"/>            |
| Management and prevention of flood or drought risks                                     | <input checked="" type="checkbox"/> |
| Preparedness for extreme events, e.g., common early warning and alarm procedures        | <input checked="" type="checkbox"/> |
| Surveillance and early warning of water related disease                                 | <input type="checkbox"/>            |
| Water allocation and/or flow regulation   | <input checked="" type="checkbox"/> |
| Policy development  | <input checked="" type="checkbox"/> |
| Control of implementation   | <input checked="" type="checkbox"/> |
| Exchange of experience between riparian States  | <input checked="" type="checkbox"/> |
| Exchange of information on existing and planned uses of water and related installations | <input checked="" type="checkbox"/> |
| Settling of differences and conflicts   | <input checked="" type="checkbox"/> |
| Consultations on planned measures   | <input checked="" type="checkbox"/> |
| Exchange of information on best available technology                                    | <input checked="" type="checkbox"/> |
| Participation in transboundary EIA  | <input type="checkbox"/>            |
| Development of river, lake or aquifer basin management or action plans                  | <input checked="" type="checkbox"/> |
| Management of shared infrastructure   | <input type="checkbox"/>            |
| Addressing hydromorphological alterations   | <input checked="" type="checkbox"/> |
| Climate change adaptation   | <input checked="" type="checkbox"/> |
| Joint communication strategy  | <input checked="" type="checkbox"/> |

<sup>31</sup> This may include tasks according to the agreement or tasks added by the joint body, or its subsidiaries. Both tasks which joint bodies coordinate and tasks which they implement should be included.

- 
- Basin-wide or joint public participation and consultation of, for example, basin management plans
  - Joint resources to support transboundary cooperation
  - Capacity-building
  - Any other tasks (*please list*): [fill in]

(h) What are the main difficulties and challenges that your country faces with the operation of the joint body or mechanism, if any?

- Governance issues

*Please describe, if any:*

Aligning ICPDR plans and activities with changing national and EU policies and programmes

- Unexpected planning delays

*Please describe, if any:* [fill in]

- Lack of resources

*Please describe, if true:* [fill in]

- Lack of mechanism for implementing measures

*Please describe, if true:* [fill in]

- Lack of effective measures

*Please describe, if true:* [fill in]

- Unexpected extreme events

*Please describe, if any:* [fill in]

- Lack of information and reliable forecasts

*Please describe, if any:* [fill in]

Others (*please list and describe, as appropriate*): [fill in]

(i) Does the joint body or mechanism, or its subsidiary bodies meet regularly?

Yes /No

If yes, how frequently does it meet?

- More than once per year

- Once per year

- Less than once per year

(j) What are the main achievements with regards to the joint body or mechanism?

see question 2.f above

(k) Did the joint body or mechanism ever invite a non-riparian coastal State to cooperate?

Yes /No

*If yes, please give details. If no, why not, e.g. are the relevant coastal States also riparian States and therefore already members of the joint body or mechanism?*

---

Some of the relevant coastal states are party to the joint body (Bulgaria, Romania, Ukraine). Cooperation exists with the Black Sea Commission.

4. Have joint objectives, a common strategy, a joint or coordinated management plan or action plan been agreed for the basin, sub-basin, part of a basin or group of basins?

Yes /No

*If yes, please provide further details:*

Danube river basin management plan Update 2015  
(<https://www.icpdr.org/main/management-plans-danube-river-basin-published>)

Danube flood risk management plan 2015 (<https://www.icpdr.org/main/management-plans-danube-river-basin-published>)

Danube Declaration 2016  
(<https://www.icpdr.org/main/sites/default/files/nodes/documents/danube-declaration2016.pdf>)

Joint Statement on Navigation and Environment  
(<http://www.icpdr.org/main/activities-projects/joint-statement-navigation-environment>)

Guiding Principles on Sustainable Hydropower  
(<http://www.icpdr.org/main/activities-projects/hydropower>)

Strategy on Adaptation to Climate Change (<http://www.icpdr.org/main/activities-projects/climate-change-adaptation>)

5. How is the transboundary basin,–sub-basin, part of a basins or group of basins protected, including the protection of ecosystems, in the context of sustainable and rational water use?

Regulation of urbanization, deforestation, and sand and gravel extraction.

Environmental flow norms, including consideration of levels and seasonality

Water quality protection, e.g. nitrates, pesticides, faecal coliforms, heavy metals

Water-related species and habitats protection

Other measures (*please describe*): see Danube River Basin Management Plan

- preserve freely flowing river sections
- restore river dynamics
- (permit) a more varied design of the structure of river banks and bottom
- open old alluvial areas to the river
- change to more extensive agriculture in the floodplain
- remove obstacles to the migration of the river fauna
- reconnect old river branches and torrents

All of those measures are realized on national level, not on international level. But information is compiled on international level and exchange is guaranteed in the working and expert groups of the ICPDR.

- 
6. (a) Does your country regularly exchange information and data with other riparian States in the basin, sub-basin, part of a basin or group of basins?

Yes /No

- (b) If yes, how often:

More than once per year

Once per year

Less than once per year

- (c) Please describe how information is exchanged (e.g. in connection with meetings of joint bodies):

Joint monitoring programm

Results of those monitoring programmes are discussed in the relevant working and expert groups and on strategic/political level also with regard to follow-up steps.

Every six years Joint Danube Surveys: joint monitoring campaign at the same time on the Danube and main tributaries, based on jointly agreed parameters and methods. Evaluation per parameter in the same laboratory. Testing of new monitoring or analytical methods.]

- (d) If yes, on what subjects are information and data exchanged?

Environmental conditions

Research activities and application of best available techniques

Emission monitoring data

Planned measures taken to prevent, control or reduce transboundary impacts

Point source pollution sources

Diffuse pollution sources

Existing hydromorphological alterations (dams, etc.)

Flows or water levels (including groundwater levels)

Water abstractions

Climatological information

Future planned measures with transboundary impacts, such as infrastructure development

Other subjects (*please list*):

Flood protection measures and their possible effects

Accidents with possible transboundary effects on water bodies

Other comments, e.g. spatial coverage of data and information exchange: [fill in]

- (e) Is there a shared database or information platform?

Yes /No

- (f) Is the database publicly available?

Yes /No

*If yes, please provide the web address:*

http://www.icpdr.org/main/publications/databases

(g) What are the main difficulties and challenges to data exchange, if applicable?

Frequency of exchanges

Timing of exchanges

Comparability of data and information

Limited spatial coverage

Inadequate resources (technical and/or financial)

Other (*please describe*): [fill in]

Additional comments: [fill in]

(h) What are the main benefits of data exchange on the basin, sub-basin, part of a basin or group of basins? (*please describe*):

Better overview on the whole basin, comparability, improved possibilities for early warning and alarm system, improved understanding of other countries' issues and problems

7. Do the riparian States carry out joint monitoring in the transboundary basin, sub-basin, part of a basin or group of basins?

Yes /No

(a) If yes, what does the joint monitoring cover?

	<i>Hydrological</i>	<i>Ecological</i>	<i>Chemical</i>
Border surface waters	<input type="checkbox"/>	<input type="checkbox"/>	<input type="checkbox"/>
Surface waters in the entire basin	<input checked="" type="checkbox"/>	<input checked="" type="checkbox"/>	<input checked="" type="checkbox"/>
Surface waters on the main watercourse	<input type="checkbox"/>	<input type="checkbox"/>	<input type="checkbox"/>
Surface waters in part of the basin please describe [fill in]	<input type="checkbox"/>	<input type="checkbox"/>	<input type="checkbox"/>
Transboundary aquifer(s) (connected or unconnected)	<input checked="" type="checkbox"/>	<input type="checkbox"/>	<input checked="" type="checkbox"/>
Aquifer(s) in the territory of one riparian hydraulically connected to a transboundary river or lake	<input type="checkbox"/>	<input type="checkbox"/>	<input type="checkbox"/>

(b) If joint monitoring is carried out, how is this done?

National monitoring stations connected through a network or common stations

*Please describe:* Transnational Monitoring Network

Joint and agreed methodologies

*Please describe:* Diverse methodologies depending on the parameter, partly methodologies agreed on EU level due to the EU Directives

---

Joint sampling

*Please describe:* Joint Danube Surveys

Common monitoring network

*Please describe:* see above

Common agreed parameters

*Please describe:* Biological parameters are fish, macrozoobenthos, macrophytes, phytoplankton, thus the biological quality elements of the EU Water Framework Directive. Also invasive species are looked at.

Chemical substances list is updated regularly. new substances are added, not any longer problematic ones deleted. Substances of the EQS Directive (daughter directive to the Water Framework Directive)

<http://www.icpdr.org/main/activities-projects/tnmn-transnational-monitoring-network>

<http://icpdr.org/main/activities-projects/joint-danube-survey>

(c) Please describe the main achievements regarding joint monitoring, if any:

The long-term cooperation yields in long time series of chemical and biological parameters, that enable joint trend analyses and joint conclusions on the trends.

The up to now 4 Joint Danube Surveys have significantly improved the knowledge on the main stream and tributaries as well as on methodologies (see <http://www.icpdr.org/main/activities-projects/joint-danube-survey>)

(d) Please describe any difficulties experienced with joint monitoring:

8. Do the riparian States carry out joint assessment of the transboundary basin, sub-basin, part of a basin or group of basins?

Yes /No

*If yes, please provide the date of the last or only assessment, the frequency and scope (e.g., surface waters or groundwaters only, pollution sources, etc.) of the assessment, and assessment methodology applied:*

Joint Danube Surveys (<https://www.icpdr.org/main/activities-projects/joint-danube-survey>)

Updated River Basin Management Plan

9. Have the riparian States agreed to use joint water quality standards?

Yes /No

*If yes, what standards have been applied, e.g. international or regional standards (please specify which), or have national standards of the riparian States been applied?*

According to the EU Water Framework Directive and its daughter directives on priority substances and groundwater

10. What are the measures implemented to prevent or limit the transboundary impact of accidental pollution?

Notification and communication

Coordinated or joint early warning or alarm system for accidental



---

water pollution

Other (*please list*): [fill in]

No measures

*If not, why not? What difficulties does your country face in putting in place such measures?:* [fill in]

11. What are the measures implemented to prevent or limit the transboundary impact of extreme weather events and climate change?

Notification and communication

Coordinated or joint alarm system for floods

Coordinated or joint alarm system for droughts

Joint climate change adaptation strategy

Joint disaster risk reduction strategy

Other (*please list*): [fill in]

No measures

*If not, why not? What difficulties does your country face in putting in place such measures?:* [fill in]

12. Are procedures in place for mutual assistance in case of a critical situation?

Yes /No

*If yes, please provide a brief summary:*

addressed mainly on bilateral level (other treaties) and to certain extent through AEWS EG

13. Are the public or relevant stakeholders involved in transboundary water management in the basin, sub-basin, part of a basin or group of basins?

Yes /No

*If yes, how? (please tick all applicable)*

Stakeholders have observer status in a joint body or mechanism

Stakeholders have an advisory role in the joint body

Stakeholders have a decision-making role in the joint body

*If yes, please specify the stakeholders for the joint body or mechanism:*

Intergovernmental organizations

Private sectors organizations or associations

Water user groups or associations

Academic or research institutions

Other non-governmental organizations

General public

Other (please specify): [fill in]

Availability of information to the public

---

Consultation on planned measures or river basin  
management plans<sup>32</sup>



Public involvement



Other (*please specify*):

ICPDR has a public participation expert group, see <http://icpdr.org/main/icpdr/public-participation-expert-group>

---

<sup>32</sup> Or, where applicable, aquifer management plans.

---

**Multilateral Commission Rhine River**

**Name of the transboundary basin,-sub-basin, part of a basin or group of basins: Rhine River**

List of the riparian States:

Switzerland, Liechtenstein, Austria, Germany, France, Belgium (Wallon region), Netherlands, Luxembourg, Italy

**In the case of an aquifer, what is the nature of the aquifer and its relation with the river or lake basin:**

- Unconfined aquifer connected to a river or lake
- Unconfined aquifer with no or limited relation with surface water
- Confined aquifer connected to surface water
- Confined aquifer with no or limited relation with surface water
- Other

Please describe: [fill in]:

Unknown

**Percentage of your country's territory within the basin, sub-basin, part of a basin or group of basins: 2,8%**

1. Is there one or more transboundary (bilateral or multilateral) agreement(s) or arrangement(s) on this basin, sub-basin, part of a basin or group of basins?

- One or more agreements or arrangements exist and are in force
- Agreement or arrangement developed but not in force
- Agreement or arrangement developed, but not in force for all riparians

*Please insert the name of the agreement(s) or arrangement(s)*

1999 Convention on the Protection of the Rhine

Agreement or arrangement is under development

No agreement or arrangement

*If there is no agreement or arrangement or it is not in force, please explain briefly why not and provide information on any plans to address the situation: [fill in]*

**If there is no agreement or arrangement and no joint body or mechanism for the transboundary basin, sub-basin, part of a basin or group of basins then jump to question 4; if there is no agreement or arrangement, but a joint body or mechanism then go to question 3.**

**Questions 2 and 3 to be completed for each bilateral or multilateral agreement or arrangement in force in the transboundary basin, sub-basin, part of a basin or group of basins.**

2. (a) Does this agreement or arrangement specify the area subject to cooperation?

Yes /No

If yes, does it cover the entire basin or group of basins and all riparian States?

Yes /No

---

Additional explanations?

The Convention covers only the main stream and only with regard to some issues the whole basin (if problems there have effects on the main stream). In order to cover the whole basin and to involve AT, BE (Walloon region) and Liechtenstein as well as Italy, the other countries in the basin, the so called Coordinating Committee has been established via a decision of a ministerial conference. There are special rules of procedure (Rules of Procedure and Financial Regulations for the Cooperation for the Cooperation of the International Commission for the Protection of the Rhine (ICPR) with the Coordinating Committee (CC) Rhine.

Thus there is an international platform to coordinate the basin related implementation of the EU Water Framework Directive and the EU Flood Risk Management Directive.

Or, if the agreement or arrangement relates to a sub-basin, does it cover the entire sub-basin?

Yes /No

Additional explanations? [fill in]

Which States (including your own) are bound by the agreement or arrangement?  
(Please list):

The Governments of the Federal Republic of Germany, the French Republic, the Grand Duchy of Luxembourg, the Kingdom of the Netherlands, the Swiss Confederation, and the European Union (ICPR) and Governments of the Republic of Austria, the Principality of Liechtenstein, the Region Wallonia and the Italian Republic (Coordinating Committee (CC))

(b) If the agreement or arrangement relates to a river or lake basin or sub-basin, does it also cover aquifers?

Yes /No

If yes, please list the aquifers covered by the agreement or arrangement:

Groundwater, which is in connection with the Rhine (Article 2 of the Rhine Convention) and all groundwater in the basin due to the EU Water Framework Directive

(c) What is the sectoral scope of the agreement or arrangement?

- |                               |                                     |
|-------------------------------|-------------------------------------|
| All water uses                | <input checked="" type="checkbox"/> |
| A single water use or sector  | <input type="checkbox"/>            |
| Several water uses or sectors | <input type="checkbox"/>            |

If one or several water uses or sectors, please list (check as appropriate):

**Water uses or sectors**

- |   |                          |
|---|--------------------------|
| Industry                                  | <input type="checkbox"/> |
| Agriculture                               | <input type="checkbox"/> |
| Transport (e.g., navigation)              | <input type="checkbox"/> |
| Households                                | <input type="checkbox"/> |
| Energy: hydropower and other energy types | <input type="checkbox"/> |
| Fisheries                                 | <input type="checkbox"/> |

---

Tourism

Nature protection

Other (*please list*): [fill in]

(d) What topics or subjects of cooperation are included in the agreement or arrangement?

**Procedural and institutional issues**

Dispute and conflict prevention and resolution

Institutional cooperation (joint bodies)

Consultation on planned measures

Mutual assistance

**Topics of cooperation**

Joint vision and management objectives

Joint significant water management issues

Navigation

Human health

Environmental protection (ecosystem)

Water quality

Water quantity or allocation

Cooperation in addressing floods

Cooperation in addressing droughts

Climate change adaptation

**Monitoring and exchange**

Joint assessments

Data collection and exchange

Joint monitoring

Maintenance of joint pollution inventories

Elaboration of joint water quality objectives

Common early warning and alarm procedures

Exchange of experience between riparian States

Exchange of information on planned measures

**Joint planning and management**

Development of joint regulations on specific topics

Development of international or joint river, lake or aquifer basin management or action plans

Management of shared infrastructure

Development of shared infrastructure

---

Other (*please list*):

Concerning navigation cooperation exists between the ICPR and the Central Commission for the Navigation of the Rhine, which deals with navigation issues from a transport/technical perspective.

(e) What are the main difficulties and challenges that your country faces with the agreement or arrangement and its implementation, if any?

Aligning implementation of agreement or arrangement with national laws, policies and programmes

Aligning implementation of agreement or arrangement with regional laws, policies and programmes

Lack of financial resources

Insufficient human capacity

Insufficient technical capacity

Tense diplomatic relations

Non-participation of certain riparian countries in the agreement

No significant difficulties

Other (*please describe*): Upstream/downstream issues not always easy to coordinate

(f) What are the main achievements in implementing the agreement or arrangement and what were the keys to achieving such success?

The main concrete achievement of ICPR has been a tremendous improvement in the ecological and chemical quality of the Rhine and later also its tributaries. This has been achieved through both measures to reduce pollution and river restoration measures e.g. through improving the ecological connectivity and spawning grounds. Also, the flood management has substantially improved. Next to this, improvements include the exchange of data and information between the parties, including a warning and alarm system, and a certain level of alignment of measures and plans in the riparian countries. Key to this success has been close cooperation at technical and political level and the subsequent building of trust as well as mutual understanding among the countries along the river and in the basin.

This basis allows to be flexible and to take up new issues like climate change and its effects, low water monitoring etc. The new programme "Rhine 2040" proves this [https://www.iksr.org/fileadmin/user\\_upload/DKDM/Dokumente/Sonstiges/EN/ot\\_En\\_Rhine\\_2040.pdf](https://www.iksr.org/fileadmin/user_upload/DKDM/Dokumente/Sonstiges/EN/ot_En_Rhine_2040.pdf)

(g) Please attach a copy of the agreement or arrangement or provide the web address of the document (*please attach document or insert web address, if applicable*):

<https://www.iksr.org/de/iksr/rechtliche-basis/uebereinkommen>

3. Is your country a member of any joint body or mechanism for this agreement or arrangement?

Yes /No

*If no, why not? (please explain):* [fill in]

---

**Where there is a joint body or mechanism**

(a) If there is a joint body or mechanism, which kind of joint body or mechanism (please tick one)?

Plenipotentiaries

Bilateral commission

Basin or similar commission

Expert group meeting or meeting of national focal points

Other (please describe):

In addition to the ICPR a Coordination Committee of the Rhine countries being Parties to the Convention and the Non-Party countries in the basin (Austria, Walloon Region (Belgium), Liechtenstein and Italy) was established to implement the basin related EU Directives.

(b) Does the joint body or mechanism cover the entire transboundary basin, sub-basin, part of a basin or group of basins?

Yes /No

(c) Which States (including your own) are members of the joint body or mechanism? (Please list):

The Governments of the Federal Republic of Germany, the French Republic, the Grand Duchy of Luxembourg, the Kingdom of the Netherlands, the Swiss Confederation, and the European Community in the ICPR, those countries and Austria, Liechtenstein, Walloon Region (Belgium) and Italy in the Coordination Committee

(d) Are there any riparian States that are not members of the joint body or mechanism? (please list): [fill in]

(e) If not all riparian States are members of the joint body or mechanism how does the joint body or mechanism cooperate with them?

No cooperation

They have observer status

Other (please describe): [fill in]

(f) Does the joint body or mechanism have any of the following features (please tick the ones applicable)?

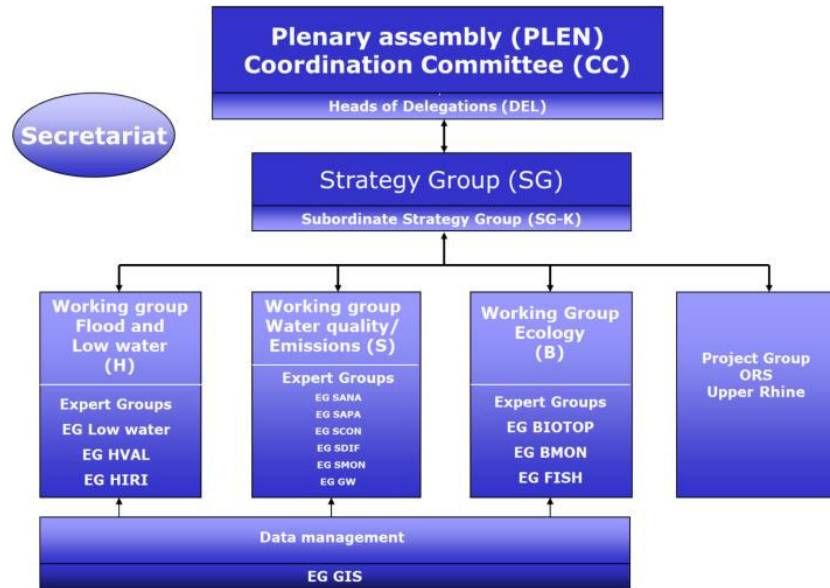
A secretariat

If the secretariat is a permanent one, is it a joint secretariat or does each country host its own secretariat? (Please describe):

Permanent joint secretariat

A subsidiary body or bodies

Please list (e.g., working groups on specific topics):



Other features (*please list*):

Adaptive working structure. Project and expert groups are established as needed, often with a time limited mandate

Regular ministerial conferences

(g) What are the tasks and activities of this joint body or mechanism?<sup>33</sup>

- |   |                                     |
|---|-------------------------------------|
| Identification of pollution sources   | <input checked="" type="checkbox"/> |
| Data collection and exchange  | <input checked="" type="checkbox"/> |
| Joint monitoring  | <input checked="" type="checkbox"/> |
| Maintenance of joint pollution inventories  | <input checked="" type="checkbox"/> |
| Setting emission limits   | <input type="checkbox"/>            |
| Elaboration of joint water quality objectives   | <input checked="" type="checkbox"/> |
| Management and prevention of flood or drought risks                                     | <input checked="" type="checkbox"/> |
| Preparedness for extreme events, e.g., common early warning and alarm procedures        | <input checked="" type="checkbox"/> |
| Surveillance and early warning of water related disease                                 | <input type="checkbox"/>            |
| Water allocation and/or flow regulation   | <input checked="" type="checkbox"/> |
| Policy development  | <input checked="" type="checkbox"/> |
| Control of implementation   | <input checked="" type="checkbox"/> |
| Exchange of experience between riparian States  | <input checked="" type="checkbox"/> |
| Exchange of information on existing and planned uses of water and related installations | <input checked="" type="checkbox"/> |

<sup>33</sup> This may include tasks according to the agreement or tasks added by the joint body, or its subsidiaries. Both tasks which joint bodies coordinate and tasks which they implement should be included.



- 
- Settling of differences and conflicts
  - Consultations on planned measures
  - Exchange of information on best available technology
  - Participation in transboundary EIA
  - Development of river, lake or aquifer basin management or action plans
  - Management of shared infrastructure
  - Addressing hydromorphological alterations
  - Climate change adaptation
  - Joint communication strategy
  - Basin-wide or joint public participation and consultation of, for example, basin management plans
  - Joint resources to support transboundary cooperation
  - Capacity-building

Any other tasks (*please list*):

There is no joint communication strategy as such, but elements of it as joint brochures and reports on the tasks and results of the ICPR/CC, joint press releases, interviews in media. Joint communication strategy in development.

(h) What are the main difficulties and challenges that your country faces with the operation of the joint body or mechanism, if any?

- Governance issues

*Please describe, if any:*

In general, challenges relate to aligning ICPR plans and activities with changing national and EU policies and programmes, and coming to agreement on newly arising issues and setting the agenda.

- Unexpected planning delays

*Please describe, if any:* [fill in]

- Lack of resources

*Please describe, if true:* [fill in]

- Lack of mechanism for implementing measures

*Please describe, if true:* [fill in]

- Lack of effective measures

*Please describe, if true:* [fill in]

- Unexpected extreme events

*Please describe, if any:* [fill in]

- Lack of information and reliable forecasts

*Please describe, if any:* [fill in]

Others (*please list and describe, as appropriate*): [fill in]

---

(i) Does the joint body or mechanism, or its subsidiary bodies meet regularly?

Yes /No

If yes, how frequently does it meet?

More than once per year

Once per year

Less than once per year

(j) What are the main achievements with regards to the joint body or mechanism?

See 2. f) above.

(k) Did the joint body or mechanism ever invite a non-riparian coastal State to cooperate?

Yes /No

*If yes, please give details. If no, why not, e.g. are the relevant coastal States also riparian States and therefore already members of the joint body or mechanism?*

Relevant coastal states are Parties to the joint body or the Coordination Committee (France, Belgium, Netherlands, Germany).

Contacts exist with OSPAR Convention (North Sea, North East Atlantic) and Baltic Sea Convention.

4. Have joint objectives, a common strategy, a joint or coordinated management plan or action plan been agreed for the basin, sub-basin, part of a basin or group of basins?

Yes /No

*If yes, please provide further details:*

- Internationally coordinated river basin management plan 2015 according to the EU Water Framework Directive <https://www.iksr.org/en/eu-directives/european-water-framework-directive/river-basin-management-plan-2015>
- Internationally coordinated flood risk management plan 2015 <https://www.iksr.org/en/eu-directives/floods-directive/flood-risk-management-plan>
- Rhine 2020 – Program on the sustainable development of the Rhine [https://www.iksr.org/fileadmin/user\\_upload/DKDM/Dokumente/Fachberichte/EN/rp\\_En\\_0116.pdf](https://www.iksr.org/fileadmin/user_upload/DKDM/Dokumente/Fachberichte/EN/rp_En_0116.pdf)
- Assessment of Rhine 2020 [https://www.iksr.org/fileadmin/user\\_upload/DKDM/Dokumente/Broschueren/EN/bro\\_En\\_Assessment\\_“Rhine\\_2020”\\_.pdf](https://www.iksr.org/fileadmin/user_upload/DKDM/Dokumente/Broschueren/EN/bro_En_Assessment_“Rhine_2020”_.pdf)
- New Programme Rhine 2040 [https://www.iksr.org/fileadmin/user\\_upload/DKDM/Dokumente/Sonstiges/EN/ot\\_En\\_Rhine\\_2040.pdf](https://www.iksr.org/fileadmin/user_upload/DKDM/Dokumente/Sonstiges/EN/ot_En_Rhine_2040.pdf)
- Sediment Management Plan <https://www.iksr.org/en/topics/water-quality/surface-waters/sediments>
- Low water monitoring <https://www.iksr.org/en/topics/low-water/low-water-monitoring>

5. How is the transboundary basin, sub-basin, part of a basins or group of basins protected, including the protection of ecosystems, in the context of sustainable and rational water use?

---

Regulation of urbanization, deforestation, and sand and gravel extraction.

Environmental flow norms, including consideration of levels and seasonality

Water quality protection, e.g. nitrates, pesticides, faecal coliforms, heavy metals

Water-related species and habitats protection

Other measures (*please describe*): See plans mentioned under 4., inter alia

- preserve freely flowing river sections
- restore river dynamics
- (permit) a more varied design of the structure of river banks and bottom
- open old alluvial areas to the river
- change to more extensive agriculture in the floodplain
- remove obstacles to the migration of the river fauna
- reconnect old river branches and torrents

All of those measures are realized on national level, not on international level. But information is compiled on international level and exchange is guaranteed in the working and expert groups of the ICPR.

6. (a) Does your country regularly exchange information and data with other riparian States in the basin, sub-basin, part of a basin or group of basins?

Yes /No

(b) If yes, how often:

More than once per year

Once per year

Less than once per year

(c) Please describe how information is exchanged (e.g. in connection with meetings of joint bodies):

Examples:

Joint monitoring programmes on dangerous substances, special monitoring programmes in case of emerging substances like micropollutants. Monitoring programmes are jointly discussed and agreed on within the ICPR in due time before their start.

Results of those monitoring programmes are discussed in the relevant working and expert groups and on strategic/political level also with regard to follow-up steps.

Exchange on national projects which might have transboundary effects.

(d) If yes, on what subjects are information and data exchanged?

Environmental conditions

Research activities and application of best available techniques

Emission monitoring data

Planned measures taken to prevent, control or reduce transboundary impacts

- 
- Point source pollution sources
  - Diffuse pollution sources
  - Existing hydromorphological alterations (dams, etc.)
  - Flows or water levels (including groundwater levels)
  - Water abstractions
  - Climatological information
  - Future planned measures with transboundary impacts, such as infrastructure development
  - Other subjects (*please list*):
  - Flood protection measures and their possible effects
  - Accidents with possible transboundary effects on water bodies

Other comments, e.g. spatial coverage of data and information exchange:  
Rhine and tributaries or whole basin

(e) Is there a shared database or information platform?

Yes /No

(f) Is the database publicly available?

Yes /No

*If yes, please provide the web address:*

<http://iksr.bafg.de/iksr/> and the ICPR technical reports <https://www.iksr.org/en/public-relations/documents/archive/technical-reports> (not all of them translated into English, English is not an official ICPR language), see full list in French <https://www.iksr.org/fr/relation-publiques/documents/archive/rapports>

(g) What are the main difficulties and challenges to data exchange, if applicable?

- Frequency of exchanges
- Timing of exchanges
- Comparability of data and information
- Limited spatial coverage
- Inadequate resources (technical and/or financial)

Other (*please describe*): [fill in]

Additional comments: [fill in]

(h) What are the main benefits of data exchange on the basin, sub-basin, part of a basin or group of basins? (*please describe*):

Better overview on the whole basin, comparability, inspiration concerning emerging substances. Good bases for joint planning. Improved possibilities for early warning and alarm system, improved understanding of other countries' issues and problems.

7. Do the riparian States carry out joint monitoring in the transboundary basin, sub-basin, part of a basin or group of basins?

Yes /No

(a) If yes, what does the joint monitoring cover?

	<i>Hydrological</i>	<i>Ecological</i>	<i>Chemical</i>
Border surface waters	<input type="checkbox"/>	<input type="checkbox"/>	<input type="checkbox"/>
Surface waters in the entire basin	<input checked="" type="checkbox"/>	<input checked="" type="checkbox"/>	<input checked="" type="checkbox"/>
Surface waters on the main watercourse	<input type="checkbox"/>	<input type="checkbox"/>	<input type="checkbox"/>
Surface waters in part of the basin please describe [fill in]	<input type="checkbox"/>	<input type="checkbox"/>	<input type="checkbox"/>
Transboundary aquifer(s) (connected or unconnected)	<input checked="" type="checkbox"/>	<input type="checkbox"/>	<input checked="" type="checkbox"/>
Aquifer(s) in the territory of one riparian hydraulically connected to a transboundary river or lake	<input checked="" type="checkbox"/>	<input type="checkbox"/>	<input checked="" type="checkbox"/>

(b) If joint monitoring is carried out, how is this done?

National monitoring stations connected through a network or common stations

*Please describe:*

Longstanding joint monitoring networks (substances and biology), see also answer on 6.c) above

Biology Monitoring Programme for the Rhine 2018/2019:  
[https://www.iksr.org/en/public-relations/documents/archive/technical-reports/reports-and-brochures-individual-presentation?tx\\_news\\_pi1%5Baction%5D=detail&tx\\_news\\_pi1%5Bcontroller%5D=News&tx\\_news\\_pi1%5Bnews%5D=140&cHash=b834ddf82d1d2838dabf4a97152ceed9](https://www.iksr.org/en/public-relations/documents/archive/technical-reports/reports-and-brochures-individual-presentation?tx_news_pi1%5Baction%5D=detail&tx_news_pi1%5Bcontroller%5D=News&tx_news_pi1%5Bnews%5D=140&cHash=b834ddf82d1d2838dabf4a97152ceed9)

<https://www.iksr.org/en/topics/water-quality/monitoring-of-the-state>

Rhine Monitoring Programme – Chemical Component 2015-2020:  
[https://www.iksr.org/en/public-relations/documents/archive/technical-reports/reports-and-brochures-individual-presentation?tx\\_news\\_pi1%5Baction%5D=detail&tx\\_news\\_pi1%5Bcontroller%5D=News&tx\\_news\\_pi1%5Bnews%5D=80&cHash=4da3fe79b5e81cb2e06c5d5463755f9f](https://www.iksr.org/en/public-relations/documents/archive/technical-reports/reports-and-brochures-individual-presentation?tx_news_pi1%5Baction%5D=detail&tx_news_pi1%5Bcontroller%5D=News&tx_news_pi1%5Bnews%5D=80&cHash=4da3fe79b5e81cb2e06c5d5463755f9f)

Joint and agreed methodologies

*Please describe:* see ICPR website

Joint sampling

*Please describe:* [fill in]

Common monitoring network

*Please describe:* see ICPR website

Common agreed parameters

---

*Please describe: see ICPR website*

Biological parameters are fish, macrozoobenthos, macrophytes, phytoplankton, thus the biological quality elements of the EU Water Framework Directive. Also invasive species are looked at.

Chemical substances list is updated regularly. new substances are added, not any longer problematic ones deleted. Substances of the EQS Directive (daughter directive to the Water Framework Directive), but also other substances

For more details see ICPR website and links mentioned above in 6 b).

(c) Please describe the main achievements regarding joint monitoring, if any:

The long-term cooperation yields long time series of chemical and biological parameters, that enable joint trend analyses and joint conclusions on the trends.

(d) Please describe any difficulties experienced with joint monitoring:

8. Do the riparian States carry out joint assessment of the transboundary basin, sub-basin, part of a basin or group of basins?

Yes /No

*If yes, please provide the date of the last or only assessment, the frequency and scope (e.g., surface waters or groundwaters only, pollution sources, etc.) of the assessment, and assessment methodology applied:*

Annual progress reports ( <https://www.iksr.org/de/oeffentliches/dokumente/archiv/broschueren>)

River basin management plan 2015 (<https://www.iksr.org/de/eu-richtlinien/wasserrahmenrichtlinie/bewirtschaftungsplan-2015>)

Draft river basin management plan 2021

9. Have the riparian States agreed to use joint water quality standards?

Yes /No

*If yes, what standards have been applied, e.g. international or regional standards (please specify which), or have national standards of the riparian States been applied?*

Based on quality objectives that the EU Water Framework Directive and its daughter directives set for priority substances and priority hazardous substances and for groundwater, and Rhine river specific pollutants.

10. What are the measures implemented to prevent or limit the transboundary impact of accidental pollution?

Notification and communication

Coordinated or joint early warning or alarm system for accidental water pollution

Other (*please list*): [fill in]

No measures

*If not, why not? What difficulties does your country face in putting in place such measures?:* [fill in]

---

11. What are the measures implemented to prevent or limit the transboundary impact of extreme weather events and climate change?

- Notification and communication
- Coordinated or joint alarm system for floods
- Coordinated or joint alarm system for droughts
- Joint climate change adaptation strategy
- Joint disaster risk reduction strategy
- Other (*please list*): [fill in]
- No measures

*If not, why not? What difficulties does your country face in putting in place such measures?:* [fill in]

12. Are procedures in place for mutual assistance in case of a critical situation?

Yes /No

*If yes, please provide a brief summary:*

There are international bilateral agreements mainly between neighbouring countries with regard to mutual assistance in case of catastrophies. They have not been negotiated within the framework of the ICPR, but bilaterally and they cover more than water related catastrophies.

They deal with the transboundary cooperation in case of disasters, e.g. on who cooperates how.

13. Are the public or relevant stakeholders involved in transboundary water management in the basin, sub-basin, part of a basin or group of basins?

Yes /No

*If yes, how? (please tick all applicable)*

- Stakeholders have observer status in a joint body or mechanism
- Stakeholders have an advisory role in the joint body
- Stakeholders have a decision-making role in the joint body

*If yes, please specify the stakeholders for the joint body or mechanism:*  
[fill in]

- Intergovernmental organizations
- Private sectors organizations or associations
- Water user groups or associations
- Academic or research institutions
- Other non-governmental organizations
- General public
- Other (please specify): [fill in]
- Availability of information to the public
- Consultation on planned measures or river basin

---

management plans <sup>34</sup>	<input checked="" type="checkbox"/>
Public involvement	<input checked="" type="checkbox"/>
Other ( <i>please specify</i> ): [fill in]	

---

<sup>34</sup> Or, where applicable, aquifer management plans.



---

**Multilateral Commission Elbe River**

**Name of the transboundary basin,-sub-basin, part of a basin or group of basins:**

**Elbe River Basin**

List of the riparian States: Germany, Czech Republic, Poland, Austria

**In the case of an aquifer, what is the nature of the aquifer and its relation with the river or lake basin:**

- Unconfined aquifer connected to a river or lake
- Unconfined aquifer with no or limited relation with surface water
- Confined aquifer connected to surface water
- Confined aquifer with no or limited relation with surface water
- Other

Please describe:

Unknown

**Percentage of your country's territory within the basin, sub-basin, part of a basin or group of basins:** 1,1%

1. Is there one or more transboundary (bilateral or multilateral) agreement(s) or arrangement(s) on this basin, sub-basin, part of a basin or group of basins?

One or more agreements or arrangements exist and are in force

Agreement or arrangement developed but not in force

Agreement or arrangement developed, but not in force for all riparians

*Please insert the name of the agreement(s) or arrangement(s)*

1990 Convention on the International Commission for the Protection of the Elbe

Agreement or arrangement is under development

No agreement or arrangement

*If there is no agreement or arrangement or it is not in force, please explain briefly why not and provide information on any plans to address the situation: [fill in]*

**If there is no agreement or arrangement and no joint body or mechanism for the transboundary basin, sub-basin, part of a basin or group of basins then jump to question 4; if there is no agreement or arrangement, but a joint body or mechanism then go to question 3.**

**Questions 2 and 3 to be completed for each bilateral or multilateral agreement or arrangement in force in the transboundary basin, sub-basin, part of a basin or group of basins.**

2. (a) Does this agreement or arrangement specify the area subject to cooperation?

Yes /No

If yes, does it cover the entire basin or group of basins and all riparian States?

Yes /No

Additional explanations? [fill in]

---

Or, if the agreement or arrangement relates to a sub-basin, does it cover the entire sub-basin?

Yes /No

Additional explanations? [fill in]

Which States (including your own) are bound by the agreement or arrangement?  
(Please list):

Germany, Czech Republic

Poland and Austria have observer status

(b) If the agreement or arrangement relates to a river or lake basin or sub-basin, does it also cover aquifers?

Yes /No

If yes, please list the aquifers covered by the agreement or arrangement: [fill in]

(c) What is the sectoral scope of the agreement or arrangement?

All water uses

A single water use or sector

Several water uses or sectors

If one or several water uses or sectors, please list (check as appropriate):

**Water uses or sectors**

Industry

Agriculture

Transport (e.g., navigation)

Households

Energy: hydropower and other energy types

Fisheries

Tourism

Nature protection

Other (please list): [fill in]

(d) What topics or subjects of cooperation are included in the agreement or arrangement?

**Procedural and institutional issues**

Dispute and conflict prevention and resolution

Institutional cooperation (joint bodies)

Consultation on planned measures

Mutual assistance

**Topics of cooperation**

Joint vision and management objectives

Joint significant water management issues

- 
- Navigation
  - Human health
  - Environmental protection (ecosystem)
  - Water quality
  - Water quantity or allocation
  - Cooperation in addressing floods
  - Cooperation in addressing droughts
  - Climate change adaptation
  - Monitoring and exchange**
  - Joint assessments
  - Data collection and exchange
  - Joint monitoring
  - Maintenance of joint pollution inventories
  - Elaboration of joint water quality objectives
  - Common early warning and alarm procedures
  - Exchange of experience between riparian States
  - Exchange of information on planned measures
  - Joint planning and management**
  - Development of joint regulations on specific topics
  - Development of international or joint river, lake or aquifer basin management or action plans
  - Management of shared infrastructure
  - Development of shared infrastructure
  - Other (*please list*): [fill in]

(e) What are the main difficulties and challenges that your country faces with the agreement or arrangement and its implementation, if any?

- Aligning implementation of agreement or arrangement with national laws, policies and programmes
- Aligning implementation of agreement or arrangement with regional laws, policies and programmes
- Lack of financial resources
- Insufficient human capacity
- Insufficient technical capacity
- Tense diplomatic relations
- Non-participation of certain riparian countries in the agreement
- No significant difficulties
- Other (*please describe*): [fill in]

---

(f) What are the main achievements in implementing the agreement or arrangement and what were the keys to achieving such success?

The main concrete achievement of ICPE has been a significant improvement in the ecological and chemical quality of the Elbe and its basin. This has been achieved through both measures to reduce pollution and river restoration measures. Also, the flood management has improved. Next to this, improvements include the exchange of data and information between the parties, including a warning and alarm system, and a certain level of alignment of measures and plans in the riparian countries. Key to this success has been good cooperation at technical level and the subsequent building of trust as well as mutual understanding among the countries along the river and in the basin.

(g) Please attach a copy of the agreement or arrangement or provide the web address of the document (*please attach document or insert web address, if applicable*):

[http://www.ikse-mkol.org/fileadmin/media/user\\_upload/D/02\\_IKSE/Vereinbarung\\_ueber\\_IKSE.pdf](http://www.ikse-mkol.org/fileadmin/media/user_upload/D/02_IKSE/Vereinbarung_ueber_IKSE.pdf)

3. Is your country a member of any joint body or mechanism for this agreement or arrangement?

Yes /No

*If no, why not? (please explain):* [fill in]

**Where there is a joint body or mechanism**

(a) If there is a joint body or mechanism, which kind of joint body or mechanism (*please tick one*)?

Plenipotentiaries

Bilateral commission

Basin or similar commission

Expert group meeting or meeting of national focal points

Other (*please describe*): [fill in]

(b) Does the joint body or mechanism cover the entire transboundary basin, sub-basin, part of a basin or group of basins?

Yes /No

(c) Which States (including your own) are members of the joint body or mechanism? (*Please list*):

Germany, Czech Republic

(d) Are there any riparian States that are not members of the joint body or mechanism? (*please list*):

Poland and Austria are not Parties to the agreement due to their small parts of the basin, but they are members of the coordination group ICG in order to implement all EU basin related directives, see working structure below

(e) If not all riparian States are members of the joint body or mechanism how does the joint body or mechanism cooperate with them?

No cooperation

They have observer status

Other (please describe):

Poland and Austria have observer status.

(f) Does the joint body or mechanism have any of the following features (please tick the ones applicable)?

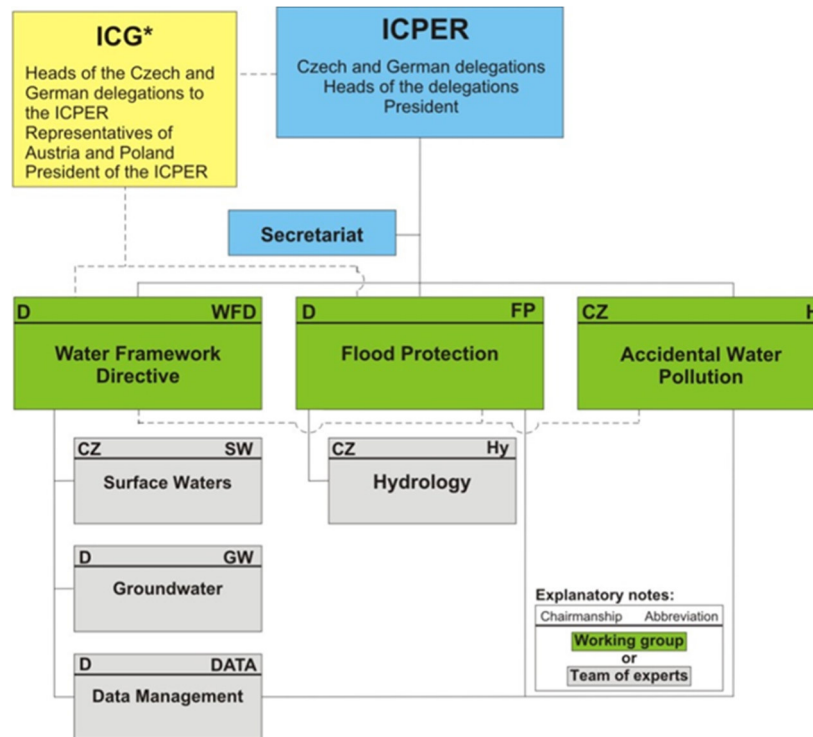
A secretariat

If the secretariat is a permanent one, is it a joint secretariat or does each country host its own secretariat? (Please describe):

Joint secretariat

A subsidiary body or bodies

Please list (e.g., working groups on specific topics):



\* The International Coordination Group (ICG) solves the issues of international cooperation related to the implementations of the Water Framework Directive and the EU Flood Directive in the Elbe River basin.

Other features (please list): [fill in]

(g) What are the tasks and activities of this joint body or mechanism?<sup>35</sup>

Identification of pollution sources

Data collection and exchange

Joint monitoring

<sup>35</sup> This may include tasks according to the agreement or tasks added by the joint body, or its subsidiaries. Both tasks which joint bodies coordinate and tasks which they implement should be included.

- 
- Maintenance of joint pollution inventories
  - Setting emission limits
  - Elaboration of joint water quality objectives
  - Management and prevention of flood or drought risks
  - Preparedness for extreme events, e.g., common early warning and alarm procedures
  - Surveillance and early warning of water related disease
  - Water allocation and/or flow regulation
  - Policy development
  - Control of implementation
  - Exchange of experience between riparian States
  - Exchange of information on existing and planned uses of water and related installations
  - Settling of differences and conflicts
  - Consultations on planned measures
  - Exchange of information on best available technology
  - Participation in transboundary EIA
  - Development of river, lake or aquifer basin management or action plans
  - Management of shared infrastructure
  - Addressing hydromorphological alterations
  - Climate change adaptation
  - Joint communication strategy
  - Basin-wide or joint public participation and consultation of, for example, basin management plans
  - Joint resources to support transboundary cooperation
  - Capacity-building

Any other tasks (*please list*): [fill in]

(h) What are the main difficulties and challenges that your country faces with the operation of the joint body or mechanism, if any?

- Governance issues

*Please describe, if any:*

In general, challenges relate to aligning ICPE plans and activities with changing national policies and programmes, and coming to agreement on newly arising issues and setting the agenda.

- Unexpected planning delays

*Please describe, if any:* [fill in]

- Lack of resources

---

*Please describe, if true: [fill in]*

Lack of mechanism for implementing measures

*Please describe, if true: [fill in]*

Lack of effective measures

*Please describe, if true: [fill in]*

Unexpected extreme events

*Please describe, if any: [fill in]*

Lack of information and reliable forecasts

*Please describe, if any: [fill in]*

Others (*please list and describe, as appropriate*): [fill in]

(i) Does the joint body or mechanism, or its subsidiary bodies meet regularly?

Yes /No

If yes, how frequently does it meet?

More than once per year

Once per year

Less than once per year

(j) What are the main achievements with regards to the joint body or mechanism?

International River Basin Management Plan for the River Basin District Elbe

International Flood Risk Management Plan for the River Basin District Elbe

(k) Did the joint body or mechanism ever invite a non-riparian coastal State to cooperate?

Yes /No

*If yes, please give details. If no, why not, e.g. are the relevant coastal States also riparian States and therefore already members of the joint body or mechanism?*

Germany is coastal state and Party to the ICPE Convention.

4. Have joint objectives, a common strategy, a joint or coordinated management plan or action plan been agreed for the basin, sub-basin, part of a basin or group of basins?

Yes /No

*If yes, please provide further details:*

Second International River Basin Management Plan

[https://www.ikse-](https://www.ikse-mkol.org/fileadmin/media/user_upload/D/06_Publikationen/01_Wasserrahmenrichtl)

[mkol.org/fileadmin/media/user\\_upload/D/06\\_Publikationen/01\\_Wasserrahmenrichtl](https://www.ikse-mkol.org/fileadmin/media/user_upload/D/06_Publikationen/01_Wasserrahmenrichtl)  
[inie/2015\\_IKSE-IntBewiPlan\\_2016-2021\\_Web.pdf](https://www.ikse-mkol.org/fileadmin/media/user_upload/D/06_Publikationen/01_Wasserrahmenrichtl)

First International Flood Risk Management Plan

[http://www.ikse-](http://www.ikse-mkol.org/fileadmin/media/user_upload/D/06_Publikationen/02_Hochwasserschutz/2)

[mkol.org/fileadmin/media/user\\_upload/D/06\\_Publikationen/02\\_Hochwasserschutz/2](http://www.ikse-mkol.org/fileadmin/media/user_upload/D/06_Publikationen/02_Hochwasserschutz/2)  
[015\\_IKSE-IHWRMP.pdf](http://www.ikse-mkol.org/fileadmin/media/user_upload/D/06_Publikationen/02_Hochwasserschutz/2)

Sediment Management Concept

[https://www.ikse-mkol.org/fileadmin/media/user\\_upload/D/06\\_Publikationen/01\\_Wasserrahmenrichtlinie/2014\\_IKSE-Abschlussbericht%20Sediment.pdf](https://www.ikse-mkol.org/fileadmin/media/user_upload/D/06_Publikationen/01_Wasserrahmenrichtlinie/2014_IKSE-Abschlussbericht%20Sediment.pdf) (only available in German and Czech)  
 English executive summary [http://www.ikse-mkol.org/fileadmin/media/user\\_upload/E/06\\_Publikationen/01\\_Wasserrahmenrichtlinie/2015\\_ICPER-Information-Sheet\\_Sediment.pdf](http://www.ikse-mkol.org/fileadmin/media/user_upload/E/06_Publikationen/01_Wasserrahmenrichtlinie/2015_ICPER-Information-Sheet_Sediment.pdf)

5. How is the transboundary basin, sub-basin, part of a basins or group of basins protected, including the protection of ecosystems, in the context of sustainable and rational water use?

Regulation of urbanization, deforestation, and sand and gravel extraction.

Environmental flow norms, including consideration of levels and seasonality

Water quality protection, e.g. nitrates, pesticides, faecal coliforms, heavy metals

Water-related species and habitats protection

Other measures (*please describe*): see Elbe River Basin Management Plan

All of those measures are realized on national level, not on international level. But information is compiled on international level and exchange is guaranteed in the working and expert groups in the ICPE.

6. (a) Does your country regularly exchange information and data with other riparian States in the basin, sub-basin, part of a basin or group of basins?

Yes /No

- (b) If yes, how often:

More than once per year

Once per year

Less than once per year

- (c) Please describe how information is exchanged (e.g. in connection with meetings of joint bodies):

in connection with meetings of working groups and via email exchange

- (d) If yes, on what subjects are information and data exchanged?

Environmental conditions

Research activities and application of best available techniques

Emission monitoring data

Planned measures taken to prevent, control or reduce transboundary impacts

Point source pollution sources

Diffuse pollution sources

Existing hydromorphological alterations (dams, etc.)

Flows or water levels (including groundwater levels)



---

Water abstractions

Climatological information

Future planned measures with transboundary impacts, such as infrastructure development

Other subjects (*please list*): [fill in]

Other comments, e.g. spatial coverage of data and information exchange: [fill in]

(e) Is there a shared database or information platform?

Yes /No

(f) Is the database publicly available?

Yes /No

*If yes, please provide the web address:*

See ICPE monitoring programme 2017 ([http://www.ikse-mkol.org/fileadmin/media/user\\_upload/D/04\\_Themen/02\\_Gewasserguete/Dokument\\_e\\_IMPE/IMPE/IKSE-Messprogramm\\_2017.pdf](http://www.ikse-mkol.org/fileadmin/media/user_upload/D/04_Themen/02_Gewasserguete/Dokument_e_IMPE/IMPE/IKSE-Messprogramm_2017.pdf))

(g) What are the main difficulties and challenges to data exchange, if applicable?

Frequency of exchanges

Timing of exchanges

Comparability of data and information

Limited spatial coverage

Inadequate resources (technical and/or financial)

Other (*please describe*): [fill in]

Additional comments: [fill in]

(h) What are the main benefits of data exchange on the basin, sub-basin, part of a basin or group of basins? (*please describe*):

Better overview on the whole basin, comparability, improved possibilities for early warning and alarm system, improved understanding of other countries' issues and problems

7. Do the riparian States carry out joint monitoring in the transboundary basin, sub-basin, part of a basin or group of basins?

Yes /No

(a) If yes, what does the joint monitoring cover?

---

	<i>Hydrological</i>	<i>Ecological</i>	<i>Chemical</i>
Border surface waters	<input type="checkbox"/>	<input type="checkbox"/>	<input type="checkbox"/>
Surface waters in the entire basin	<input checked="" type="checkbox"/>	<input checked="" type="checkbox"/>	<input checked="" type="checkbox"/>
Surface waters on the main watercourse	<input type="checkbox"/>	<input type="checkbox"/>	<input type="checkbox"/>
Surface waters in part of the basin	<input type="checkbox"/>	<input type="checkbox"/>	<input type="checkbox"/>

	<i>Hydrological</i>	<i>Ecological</i>	<i>Chemical</i>
please describe [fill in]			
Transboundary aquifer(s) (connected or unconnected)	<input checked="" type="checkbox"/>	<input type="checkbox"/>	<input checked="" type="checkbox"/>
Aquifer(s) in the territory of one riparian hydraulically connected to a transboundary river or lake	<input checked="" type="checkbox"/>	<input type="checkbox"/>	<input checked="" type="checkbox"/>

(b) If joint monitoring is carried out, how is this done?

National monitoring stations connected through a network or common stations

*Please describe:* for details please consult: <https://www.ikse-mkol.org/themen/gewaesserguete/>

Joint and agreed methodologies

*Please describe:* [fill in]

Joint sampling

*Please describe:* : In not regular intervals and at special sites in order to compare monitoring methods and results concerning one parameter.

Common monitoring network

*Please describe:* [fill in]

Common agreed parameters

*Please describe:* [fill in]

(c) Please describe the main achievements regarding joint monitoring, if any:

The long-term cooperation yields in long time series of chemical and biological parameters, that enable joint trend analyses and joint conclusions on the trends.

(d) Please describe any difficulties experienced with joint monitoring:

Comparability of data

8. Do the riparian States carry out joint assessment of the transboundary basin, sub-basin, part of a basin or group of basins?

Yes /No

*If yes, please provide the date of the last or only assessment, the frequency and scope (e.g., surface waters or groundwaters only, pollution sources, etc.) of the assessment, and assessment methodology applied:*

Second International River Basin Management Plan, see link under 4. above

ICPE monitoring programme 2017 ([http://www.ikse-mkol.org/fileadmin/media/user\\_upload/D/04\\_Themen/02\\_Gewasserguete/Dokument\\_e\\_IMPE/IMPE/IKSE-Messprogramm\\_2017.pdf](http://www.ikse-mkol.org/fileadmin/media/user_upload/D/04_Themen/02_Gewasserguete/Dokument_e_IMPE/IMPE/IKSE-Messprogramm_2017.pdf))

9. Have the riparian States agreed to use joint water quality standards?

Yes /No

---

*If yes, what standards have been applied, e.g. international or regional standards (please specify which), or have national standards of the riparian States been applied?*

According to the EU Water Framework Directive and its daughter directives on priority substances and groundwater

10. What are the measures implemented to prevent or limit the transboundary impact of accidental pollution?

Notification and communication

Coordinated or joint early warning or alarm system for accidental water pollution

Other (*please list*): [fill in]

No measures

*If not, why not? What difficulties does your country face in putting in place such measures?:* [fill in]

11. What are the measures implemented to prevent or limit the transboundary impact of extreme weather events and climate change?

Notification and communication

Coordinated or joint alarm system for floods

Coordinated or joint alarm system for droughts

Joint climate change adaptation strategy

Joint disaster risk reduction strategy

Other (*please list*):

Coordination of the implementation of the EU Flood Risk Management Directive = Joint disaster risk reduction

No measures

*If not, why not? What difficulties does your country face in putting in place such measures?:* [fill in]

12. Are procedures in place for mutual assistance in case of a critical situation?

Yes /No

*If yes, please provide a brief summary:*

Bilateral treaties, independent from the Elbe Convention. It deals with the transboundary cooperation in case of disasters, e.g. on who cooperates how.

13. Are the public or relevant stakeholders involved in transboundary water management in the basin, sub-basin, part of a basin or group of basins?

Yes /No

*If yes, how? (please tick all applicable)*

Stakeholders have observer status in a joint body or mechanism

Stakeholders have an advisory role in the joint body

Stakeholders have a decision-making role in the joint body

---

*If yes, please specify the stakeholders for the joint body or mechanism:*  
[fill in]

Intergovernmental organizations

Private sectors organizations or associations

Water user groups or associations

Academic or research institutions

Other non-governmental organizations

General public

Other (please specify): [fill in]

Availability of information to the public

Consultation on planned measures or river basin  
management plans<sup>36</sup>

Public involvement

Other (*please specify*): [fill in]

---

<sup>36</sup> Or, where applicable, aquifer management plans.

---

### III. Water management at the national level

In this section, you are requested to provide general information on water management at the national level as it relates to transboundary waters. Information on specific transboundary basins, sub-basins, part of basins and groups of basins, should be presented in section II and not repeated here.

1. (a) Does your country's national legislation, policies, action plans and strategies refer to measures to prevent, control and reduce any transboundary impact?

Yes /No

*If yes, please briefly describe the main national laws, policies, action plans and strategies*

The Convention on the Protection and Use of transboundary watercourses and international lakes was implemented into national law based on legal act<sup>37</sup>, where the provisions of Article 2 of the UNECE Convention in terms of prevention, control and reduction of transboundary impacts are reflected.

In addition, the Austrian Water Act<sup>38</sup> provides the main legal basis for measures and instruments for the prevention, control and reduction of impacts to surface waters and groundwater both, at national as well as on transboundary level.

- (b) Does your country's legislation provide for the following principles?

Precautionary principle Yes /No

Polluter pays principle Yes /No

Sustainable development Yes /No

User pays principle Yes /No

If yes, please briefly describe how these principles are implemented at the national level:

Principles are implemented in provisions of the Austrian Water Act (e.g. Art. 55e WRG 1959 i.d.g.F<sup>39</sup>)

- (c) Does your country have a national licensing or permitting system for wastewater discharges and other point source pollution? (e.g., in industry, mining, energy, municipal, wastewater management or other sectors)?

Yes /No

*If yes, for which sectors?*

Industry

Mining

Energy

Municipal

Livestock raising

Aquaculture

Other (please list): [fill in]

---

<sup>37</sup> BGBl 578/1996

<sup>38</sup> Wasserrechtsgesetz 1959 (WRG 1959, BGBl. Nr. 215/1959 zuletzt geändert durch BGBl. I Nr. 73/2018)

<sup>39</sup> <https://www.ris.bka.gv.at/GeltendeFassung.wxe?Abfrage=Bundesnormen&Gesetzesnummer=10010290>

---

Please briefly describe the licensing or permitting system, indicating whether the system provides for setting emission limits based on best available technology?

If yes, for which sectors? (please list):

Based on the provisions of the Austrian Water Act every water use which goes beyond insignificance needs to be permitted by the competent authority. This includes permissions for discharges from any kind of point source pollution.

Several ordinances<sup>40</sup> provide emission limits for wastewater discharges for urban wastewater treatment plants as well as for industrial wastewater discharges from diverse industrial branches based on BAT.

If not, please explain why not (giving the most important reasons) or provide information if there are plans to introduce a licensing or permitting system: [fill in]

(d) Are the authorized discharges monitored and controlled?

Yes /No

If yes, how? (Please tick the ones applicable):

Monitoring of discharges	<input checked="" type="checkbox"/>
Monitoring of physical and chemical impacts on water	<input checked="" type="checkbox"/>
Monitoring of ecological impacts on water	<input checked="" type="checkbox"/>
Conditions on permits	<input checked="" type="checkbox"/>
Inspectorate	<input checked="" type="checkbox"/>

Other means (please list): [fill in]

If your country does not have a discharge monitoring system, please explain why not or provide information if there are plans to introduce a discharge monitoring system: [fill in]

(e) What are the main measures which your country takes to reduce diffuse sources of water pollution on transboundary waters (e.g., from agriculture, transport, forestry or aquaculture)? The measures listed below relate to agriculture, but other sectors may be more significant. Please be sure to include these under "others":

**Legislative measures**

Norm for uses of fertilizers	<input checked="" type="checkbox"/>
Norms for uses of manure	<input checked="" type="checkbox"/>
Permitting system	<input checked="" type="checkbox"/>
Bans on or norms for use of pesticides	<input checked="" type="checkbox"/>
Others (please list): [fill in]	

**Economic and financial measures**

Monetary incentives	<input checked="" type="checkbox"/>
Environmental taxes (such as fertilizer taxes)	<input type="checkbox"/>
Others (please list): [fill in]	

<b>Agricultural extension services</b>	<input checked="" type="checkbox"/>
--	-------------------------------------

---

<sup>40</sup> [https://www.bmlrt.gv.at/wasser/wasser-oesterreich/wasserrecht\\_national/abwasser\\_emissionsbegrenzung0.html](https://www.bmlrt.gv.at/wasser/wasser-oesterreich/wasserrecht_national/abwasser_emissionsbegrenzung0.html)

---

**Technical measures**

*Source control measures*

- Crop rotation
- Tillage control
- Winter cover crops
- Others (*please list*): [fill in]

*Other measures*

- Buffer/filter strips
- Wetland reconstruction
- Sedimentation traps
- Chemical measures
- Others (*please list*): [fill in]

**Other types of measures**

*If yes, please list:*

In Austria the main instruments to address diffuse sources of pollution are the Nitrates Action Programme (implementation of the EU Nitrates Directive (91/676/EEG), which has to be applied mandatorily on the whole territory and includes legislative measures (e.g. norms for the use of fertilisers and manure) as well as technical measures (e.g. buffer strips). The use of pesticides is in principle regulated on federal level and in detail on the level of provinces.

Mandatory measures of the nitrates action programme are supported by the Agri-Environmental programme ÖPUL 2015-2020, which is part of the Austrian Rural Development Programme and consists of measures to be applied on a voluntary basis, which go beyond legal provisions and imply e.g. technical measures (crop rotation, tillage control, catch crops,..). For application of the respective measures monetary incentives are provided due to additional efforts for farmers.

Agricultural extension services are available in all provinces of Austria and provide valuable support to farmers to enhance environmental friendly agriculture.

All these measures are effective to reduce impacts from diffuse pollution to surface waters and groundwater both, at national as well as on transboundary level.

(f) What are the main measures which your country takes to enhance water resources allocation and use efficiency?

*Please tick as appropriate (not all might be relevant)*

- A regulatory system regarding water abstraction
- Monitoring and control of abstractions
- Water rights are defined
- Water allocation priorities are listed
- Water-saving technologies
- Advanced irrigation techniques
- Demand management activities

---

Other means (please list)



Water abstractions need to be permitted based on the provisions of the Water Act. Permissions are subject to strict conditions, e.g. requirement of water meters, and are limited in time as well as in the amount to be abstracted.

All water services in Austria (at least water supply, wastewater disposal and treatment) are operated following the polluter-pays-principle on the principle of cost recovery including environmental and resource costs. Communities are empowered to determine and to levy water tariffs for the use of water supply and wastewater disposal services.

Permissions for industrial water uses are used to prescribe water saving technologies or water reuse according to best available technology.

The Rural Development Program<sup>41</sup> provides subsidies e.g. for investments into irrigation infrastructure, which are connected to the introduction of water saving irrigation technologies. Subsidies provided for construction and rehabilitation of water supply infrastructure in frame of the environmental support act<sup>42</sup> were decisive to reduce water leakages. All the above mentioned measures were and are helpful to decouple water uses from economic development.

(g) Does your country apply the ecosystems approach?

Yes /No

*If yes, please describe how:*

The EU Water Framework Directive (2000/60/EC) requires the protection, the prevention of deterioration and the enhancement of the status of aquatic and connected terrestrial ecosystems, which was implemented into national legislation (Austrian Water Act).

(h) Does your country take specific measures to prevent the pollution of groundwaters?

Yes /No

*If yes, please briefly describe the most important measures:*

Objective of the Austrian Water act is to keep groundwater in a status that it can be used as drinking water, instruments to address point sources are (i) Prohibition of direct discharges of dangerous substances to groundwater and (ii) restriction of indirect discharges (subject to permission with strict conditions) from e.g. discharges of treated wastewater or runoff from paved urban areas; diffuse sources are addressed mainly by nitrates action program<sup>43</sup> (implementation of the EU Nitrates Directive) for pollution from agriculture, stricter measures can be applied if needed on the provincial level based on provisions of Water act. Additionally, the use of fertilisers or pesticides can be restricted or prohibited in protected areas (areas devoted to water abstraction for reasons of water supply). Furthermore, the Agri-Environmental Program ÖPUL<sup>44</sup> contains measures to improve the environmental performance of farming, participation to the program is on a voluntary basis.

---

<sup>41</sup> [https://www.bmlrt.gv.at/land/laendl\\_entwicklung/foerderinfo/sonderrichtlinien\\_auswahlkriterien/srl\\_le\\_2014-2020.html](https://www.bmlrt.gv.at/land/laendl_entwicklung/foerderinfo/sonderrichtlinien_auswahlkriterien/srl_le_2014-2020.html)

<sup>42</sup> <https://www.bmlrt.gv.at/wasser/wasser-oesterreich/foederungen.html>

<sup>43</sup> [https://www.bmlrt.gv.at/wasser/wasser-oesterreich/wasserrecht\\_national/recht\\_gewaesserschutz/APNitr2012.html](https://www.bmlrt.gv.at/wasser/wasser-oesterreich/wasserrecht_national/recht_gewaesserschutz/APNitr2012.html)

<sup>44</sup> [https://www.bmlrt.gv.at/land/laendl\\_entwicklung/oeapul/oeapul2015.html](https://www.bmlrt.gv.at/land/laendl_entwicklung/oeapul/oeapul2015.html)



- 
2. Do your national laws require transboundary environmental impact assessment (EIA)?

Yes /No

*If yes, please briefly describe the legislative basis, and any related implementing procedures.*

Provisions of the Espoo-Convention together with Article 10 of the Austrian EIA Act (UVP-G)<sup>45</sup>.

*If not, do other measures provide for transboundary EIA? [fill in]*

#### IV. Final questions

1. What are the main challenges your country faces in cooperating on transboundary waters?

- |  |                                     |
|--|-------------------------------------|
| Differences between national administrative and legal frameworks | <input checked="" type="checkbox"/> |
| Lack of relevant data and information                            | <input type="checkbox"/>            |
| Difficulties in data and information exchange                    | <input type="checkbox"/>            |
| Sectoral fragmentation at the national level                     | <input type="checkbox"/>            |
| Language barrier   | <input type="checkbox"/>            |
| Resource constraints   | <input checked="" type="checkbox"/> |
| Environmental pressures, e.g. extreme events                     | <input type="checkbox"/>            |
| Sovereignty concerns   | <input type="checkbox"/>            |

Please list other challenges and/or provide further details:

Transboundary cooperation following the example of the river basin commissions of the Danube, the Rhine and the Elbe has proved itself. However, challenges are availability of necessary resources, harmonisation of methodologies and results of assessments, e.g. for border rivers (application of methodologies used on the national level may result in different assessments for the respective water bodies – harmonisation of methodologies and results is needed and executed, but not always possible due to different constraints (differences in methodologies on national level))

2. What have been the main achievements in-cooperating on transboundary waters?

- |   |                                     |
|---|-------------------------------------|
| Improved water management                                   | <input checked="" type="checkbox"/> |
| Enhanced regional integration, i.e. beyond water            | <input checked="" type="checkbox"/> |
| Adoption of cooperative arrangements                        | <input checked="" type="checkbox"/> |
| Adoption of joint plans and programmes                      | <input checked="" type="checkbox"/> |
| Long-lasting and sustained cooperation                      | <input checked="" type="checkbox"/> |
| Financial support for joint activities                      | <input checked="" type="checkbox"/> |
| Stronger political will for transboundary water cooperation | <input checked="" type="checkbox"/> |
| Better knowledge and understanding                          | <input checked="" type="checkbox"/> |

---

<sup>45</sup> [https://www.bmlrt.gv.at/umwelt/betriebl\\_umweltschutz\\_uvp/uvp/espookonv.html](https://www.bmlrt.gv.at/umwelt/betriebl_umweltschutz_uvp/uvp/espookonv.html)

- Dispute avoidance
- Stakeholder engagement

Please list other achievements, keys to achieving success, and/or provide concrete examples:

Common preparation of the basin-wide River Basin Management Plans and the Flood Risk Management Plans for the Danube River Basin, the Rhine River Basin and the Elbe River Basin

3. Please indicate which institutions were consulted during the completion of the questionnaire

- Joint body or mechanism
- Other riparian or aquifer countries
- National water management authority
- Environment agency/ authority
- Basin authority (national)
- Local or provincial government
- Geological survey (national)
- Non-water specific ministries, e.g. foreign affairs, finance, forestry and energy
- Civil society organizations
- Water user associations
- Private sector
- Other (please list): [fill in]

Please briefly describe the process by which the questionnaire was completed: [fill in]

4. If you have any other comments please add them here (*insert comments*): [fill in]
5. Name and contact details of the person(s) who filled out the questionnaire (*please insert*):

Dr. Christian Schilling  
 Bundesministerium für Landwirtschaft, Regionen und Tourismus  
 Marxergasse 2, 1030 Wien  
 Phone: +43-1-71100-607111  
 Email: christian.schilling@bmlrt.gv.at

Date: 19/06/2020 (initial submission); 24/11/2020 (final revised submission)

Signature:



Thank you very much for taking the time to complete this report.