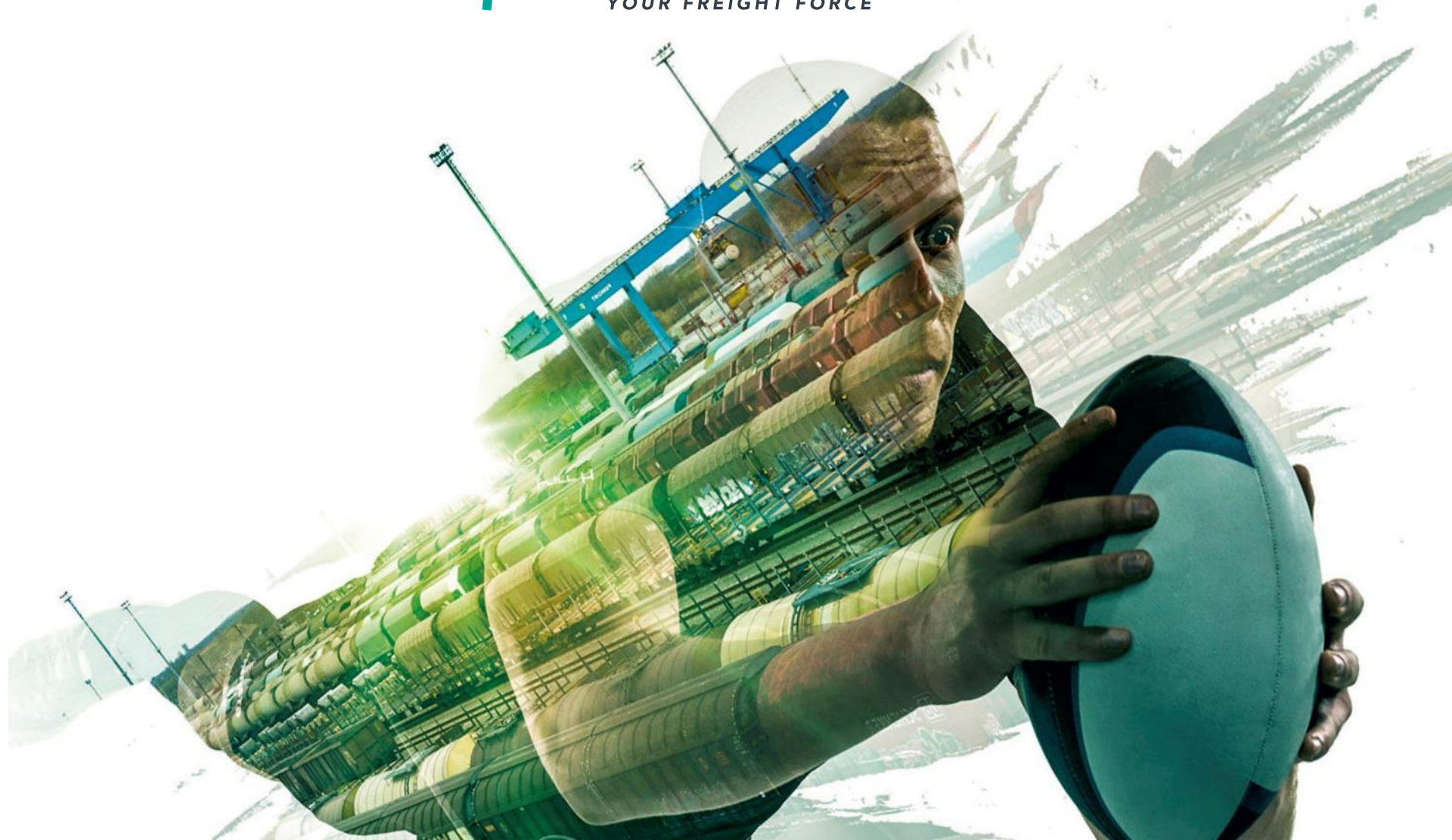


MOBILE APP OVERVIEW

LINEAS
YOUR FREIGHT FORCE

30/09/2021



Nick Mulkens

MOBILE APPS @ LINEAS

OVERVIEW

IN USE



ROLL-OUT
PLANNED



- Assist Ground Operators with safety checks and damage reports
- Improve collaboration between Station Staff and Ground Operators
- Improve personal safety of Ground Staff

IN USE



- Train Drivers can:
 - Report and justify deviations
 - Receive his/her daily schedule
 - Receive adapted schedule based on deviations
 - Receive and sign documents



MIA: MOBILE INFORMATION ASSISTANT

WHAT IS OUR GROUND OPERATOR CONTEXT?



This is groundoperator Jos...

He receives his instructions from his boss, Piet...



So his boss can encode it in the IT

Leadtime:



Safety:



Once his work is done,
he goes back to Piet...

Cost:



It is then sent to analysts...



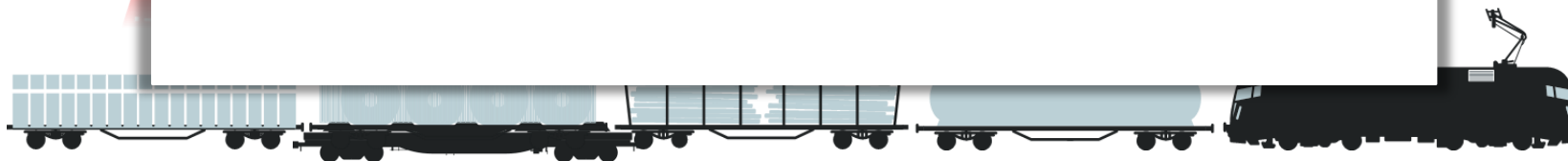
Sometimes, this data is used to...



Empowerment:



to improve his train...



The how...

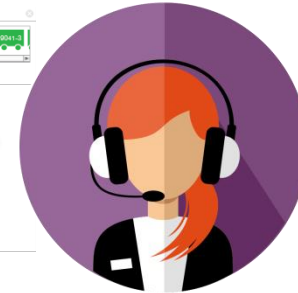
Take, stop



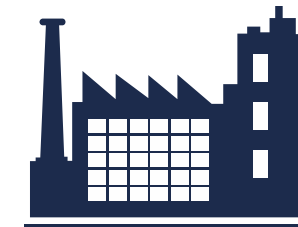
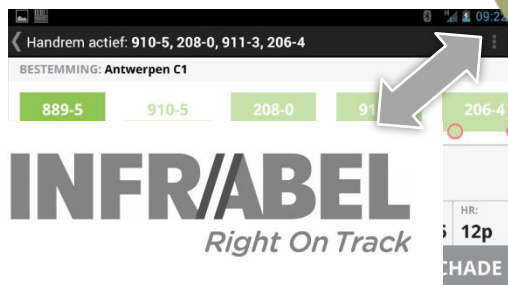
He can phone his boss, Piet, if he needs additional



read his instructions...



is about his wagons...



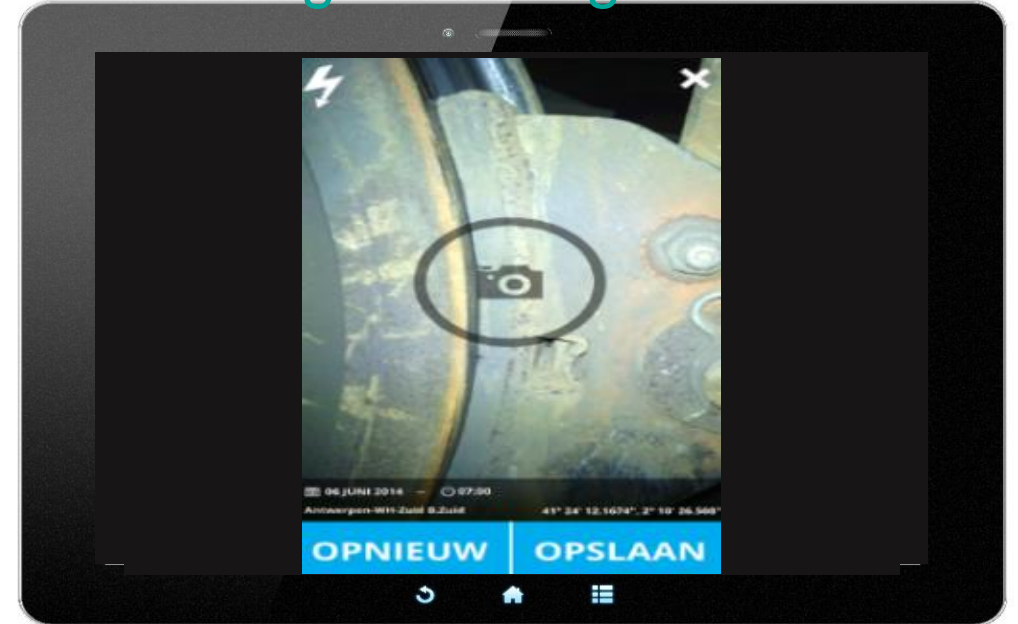
Read relevant information displayed in a simple way... **ios is now at the heart of the process**

MIA (MOBILE INFORMATION ASSISTANT)

DAMAPP: Application to register and communicate wagon damages



Create a case with pictures of the damaged wagon



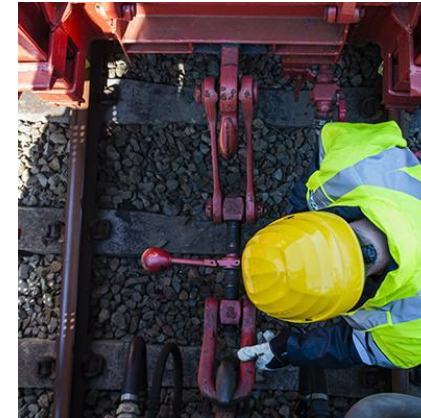


MYWA: MY WORK ASSISTANT

MY WORK ASSISTANT: IMPROVE COLLABORATION OF STATION AND GROUND STAFF



Physical distance and no line of sight between station staff and ground operators



What station staff is missing:



The exact **location** of the Ground Operator during the shift

(eg. In case of an incident)

Availability

An overall view on **availability & capabilities** of Ground Operators
(between start & end of shift)



How can technology offer support?



MOBILE TECHNOLOGY IS AIMING FOR GROUND OPERATOR SAFETY AND WORKLOAD BALANCING IMPROVEMENTS

Tool is meant to:

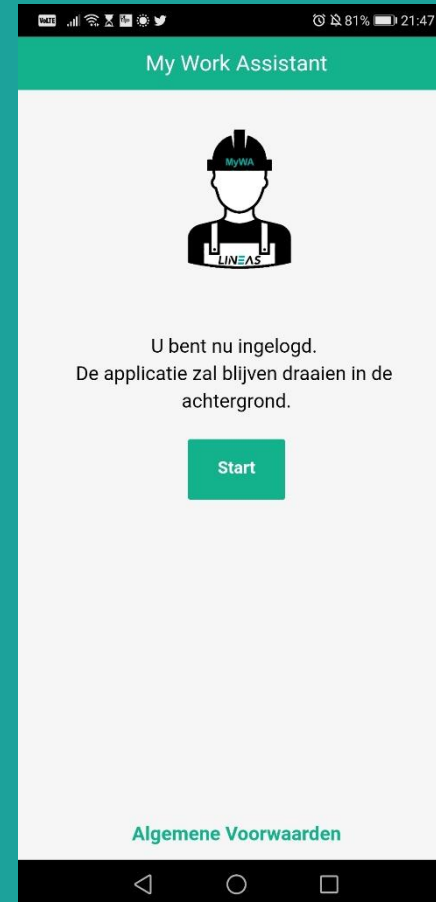
- ✓ Benefit data driven discussions and decisions
- ✓ Only operate between start & end of GO shift and only in pre-defined work zones
- ✓ Enhance safety by providing the exact GO location
- ✓ Provide a visualization tool to support LC for efficient every day task distribution based on GO location, availability & certification
- ✓ Identify possible danger zones & optimize safety measures in each work area
- ✓ Identify better workload balancing

MOBILE APPLICATION FOR GROUND OPERATORS

Mobile application for Ground Operator



GO starts the app when starting the shift and stops the app when shift has ended



Mobile app of GO is sending info to web app of stations staff



DESKTOP APPLICATION FOR STATION STAFF

Desktop application for station staff

Ground Operator is only visualized inside a working area, defined by stations management

MY WORK ASSISTANT

MAP VIEW CONFIGURATIES

NL STERCKX MATTHIAS

Overzicht

Actieve Area's

Operator

Antwerpen Noord

Antwerpen Noord

Actieve GO's 3 GO's in rust 1

GO's in de zone

- SGO LORENZ JANSSENS
- SGO Axel Waterschoot Tri 11
- SGO Tom Oerlemans 01 Bundel B2

SGO Axel Waterschoot

Locatie

Antwerpen Noord / Antwerpen Noord / Tri 11

Telefoonnummer

Organisatie

Lineas NV

Tijd binnenkomst van de zone

12h:31m

Tijd in huidige rustzone

00h:17m:20s

Totale tijd in rustzone

04h:08m:03s

GPS coördinaten

51° 17' 50.7" N
4° 21' 58.6" E



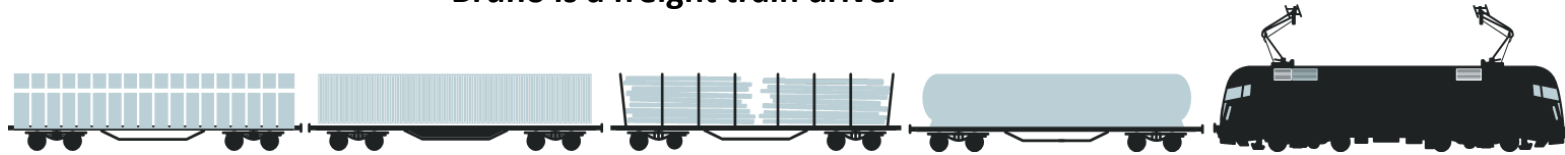
RITA: RAIL INFORMATION TRAIN ASSISTANT

WHAT MAJOR PROBLEM DID RITA SOLVE?

Meet Bruno...



Bruno is a freight train driver



To drive his train, he needs...



And Bruno needs to sign a sheet of paper to prove he has received the instruction

And this is Jeroen...



Jeroen is Bruno's instructor

Without this information



12 – 21 kgs



And deliver it to Jeroen...

Who files it locally...

20 hrs per week



He needs to make sure Bruno's information is up to date

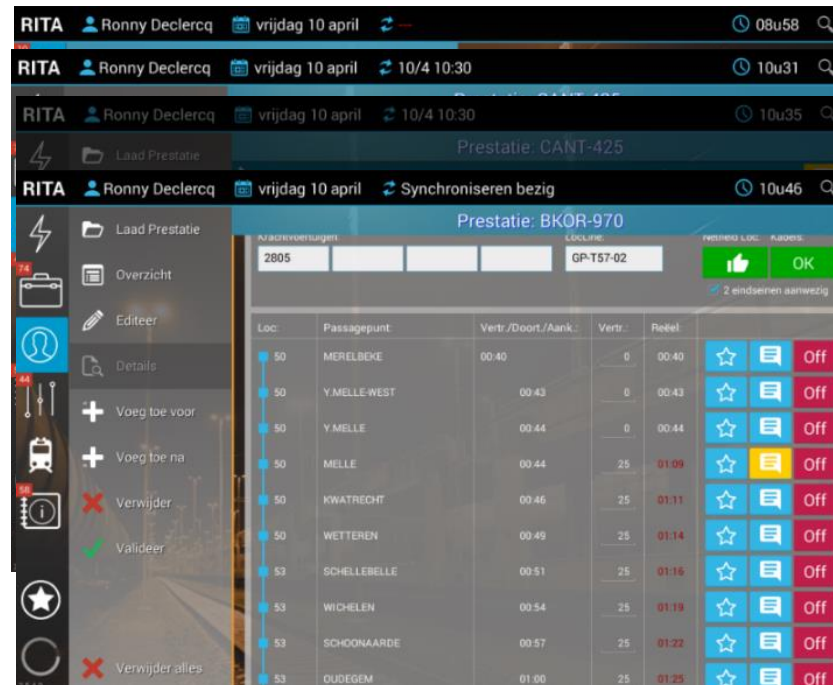
THE DIGITAL ASSISTANT OF OUR TRAIN DRIVERS

Now Bruno has a new tool...



With RITA he can:

- ✓ Receive his daily schedule from his instructor Jeroen
- ✓ Report and justify deviations and incidents
- ✓ Receive an adapted planning after the deviation has been encoded



The screenshot shows the RITA mobile application interface. At the top, it displays the user name 'Ronny Declercq', the date 'vrijdag 10 april', and the time '08u58'. Below this, there are several sections for performance data, including 'Prestatie: CANT-425' and 'Prestatie: BKOR-970'. The main part of the screen shows a table with columns for 'Loc.', 'Passagepunt', 'Vertr./Doort./Aank.', 'Vertr.', and 'Reel.'. The table lists various stations and their corresponding arrival and departure times. On the right side of the table, there are icons for 'Off' and 'OK'.

Loc.	Passagepunt	Vertr./Doort./Aank.	Vertr.	Reel.	Off	OK
50	MERELBEKE	00:40	0	00:40	Off	OK
50	Y.MELLE-WEST	00:43	0	00:43	Off	OK
50	Y.MELLE	00:44	0	00:44	Off	OK
50	MELLE	00:44	25	01:09	Off	OK
50	KWATRECHT	00:46	25	01:11	Off	OK
50	WETTEREN	00:49	25	01:14	Off	OK
53	SHELLEBELLE	00:51	25	01:16	Off	OK
53	WICHELEN	00:54	25	01:19	Off	OK
53	SCHOONAARDE	00:57	25	01:22	Off	OK
53	OUDEGEM	01:00	25	01:25	Off	OK

**THANK
YOU!**

LINEAS

TOGETHER, LET'S MODAL SHIFT!

