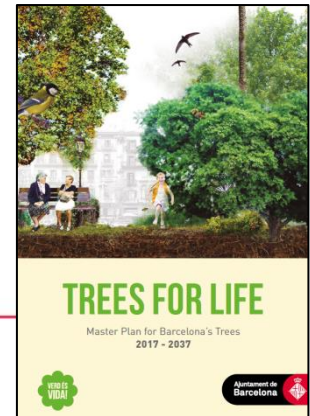


## HOW TO INTEGRATE TREES AND FORESTS INTO URBAN PLANNING?

*Advancing the sustainable management of urban trees and forests- Trees in Cities Challenge*  
*4 OCTOBER 2021*





## Why a Master Plan for Trees in Barcelona ?

---

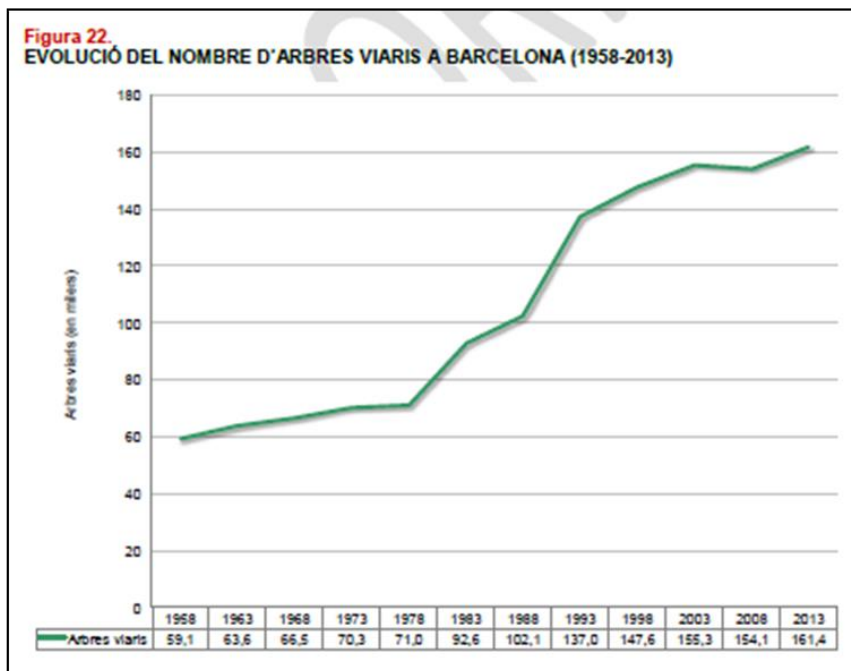
- ✓ The quantity and quality of the trees and their **role as a component of the green infrastructure** in the city are factors that have become important in the last decades in our city
- ✓ A **strategic document** that guides the municipal action on planning and management, of all the trees in the city, is required.
- ✓ The strategy involves **adaptation and anticipation** of change. It's also necessary to consider that the tree is a living being with a long life longevity (the average in the urban environment is approximately 50 years). For all these issues, the vision of the Plan is long-term (20 years, since 2017 to 2037)



# Inventory:

---

In 1958..... 59.100 street trees  
2021.....205.700 street trees



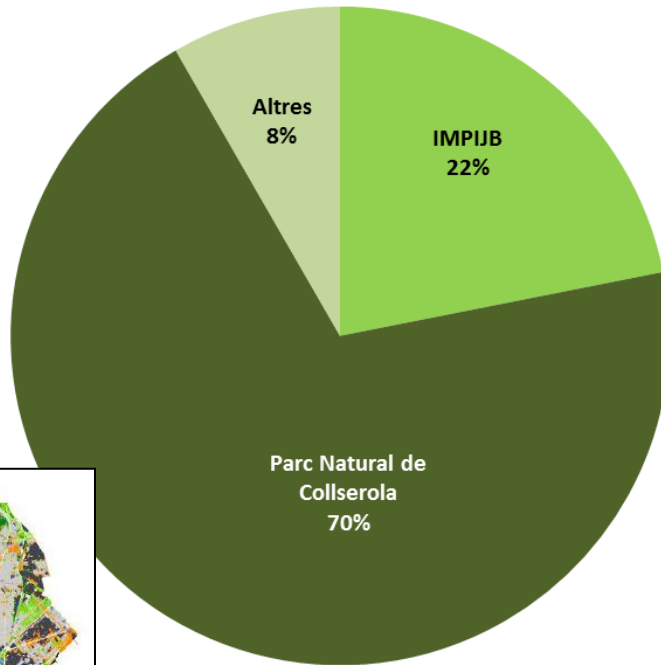
The increase in 63 years:  
**2.326 trees/ year**



# TREE HERITAGE IN THE CITY IS AROUND **1.4** MILIONS OF TREES

Tree canopy is the 25,20 % of city surface

## % TREES IN BARCELONA



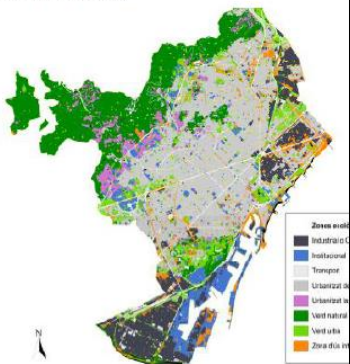
Gestionats pel Consorci del Parc natural de Collserola

Gestionats per l'IMPIJB:  
Institut Municipal de Parcs i Jardins de Barcelona

### Gestionats per Altres:

- Diputació de Barcelona (Parcs, Escola Industrial,...)
- Entitats i Institucions (Universitats, Hospitals, Escoles...)
- AMB
- Ajuntament (Cementiris, Escoles, BSM,...)
- Privats

Figura 3.  
MAPA ECOCÒGIC DE BARCELONA







## TREE HERITAGE MANAGEMENT BY THE CITY COUNCIL: **318.200 units**

---



**205.700 urban area's tree**



**39.000 park's tree**



**73.500 forestal's tree**



## URBAN AREA'S TREE

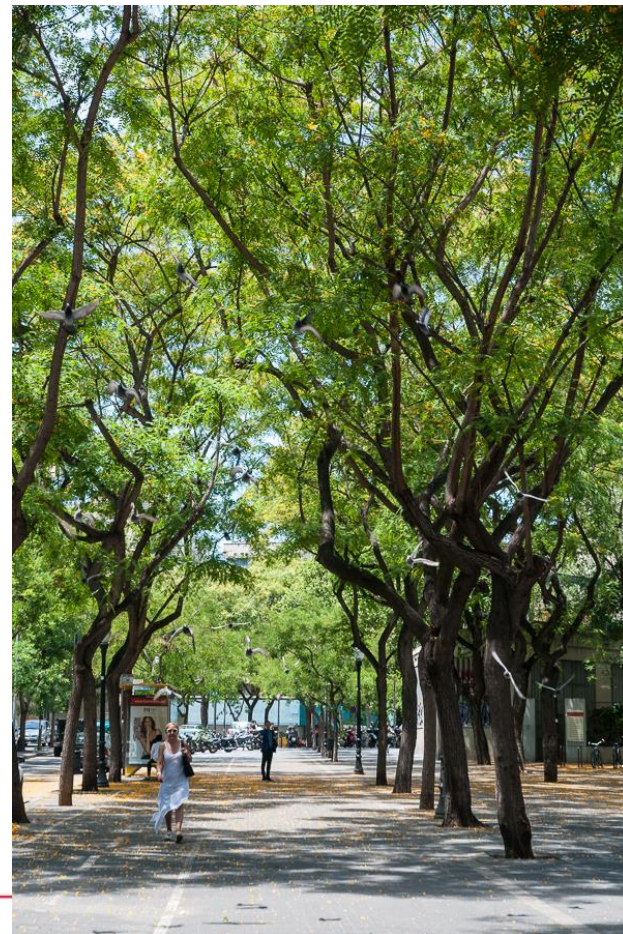
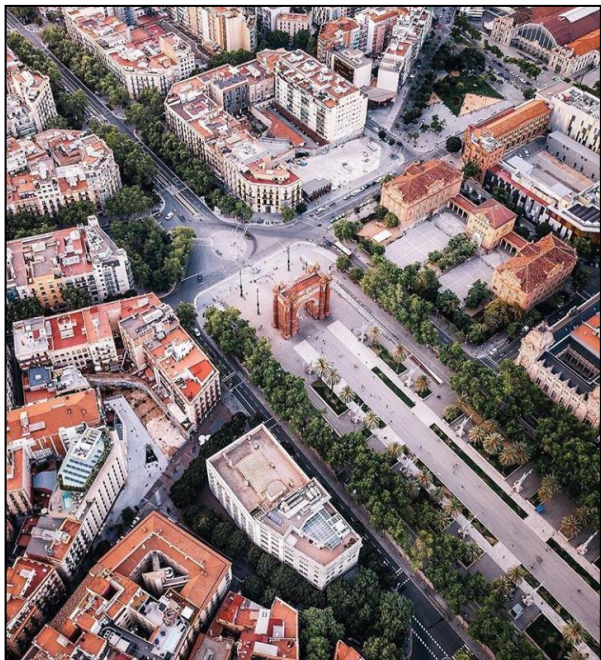
---







# URBAN AREA'S TREE







# PARKS



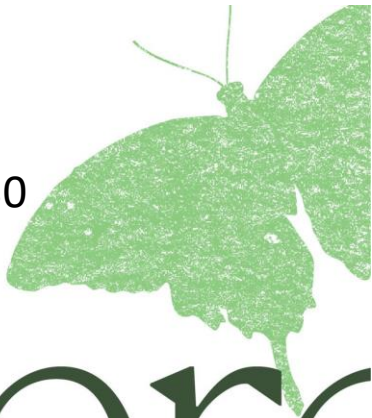




## Criteria for management and planning

Pla Natura  
Barcelona

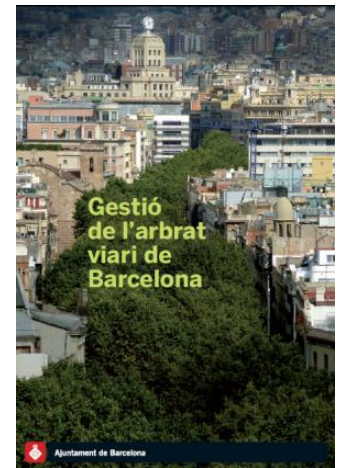
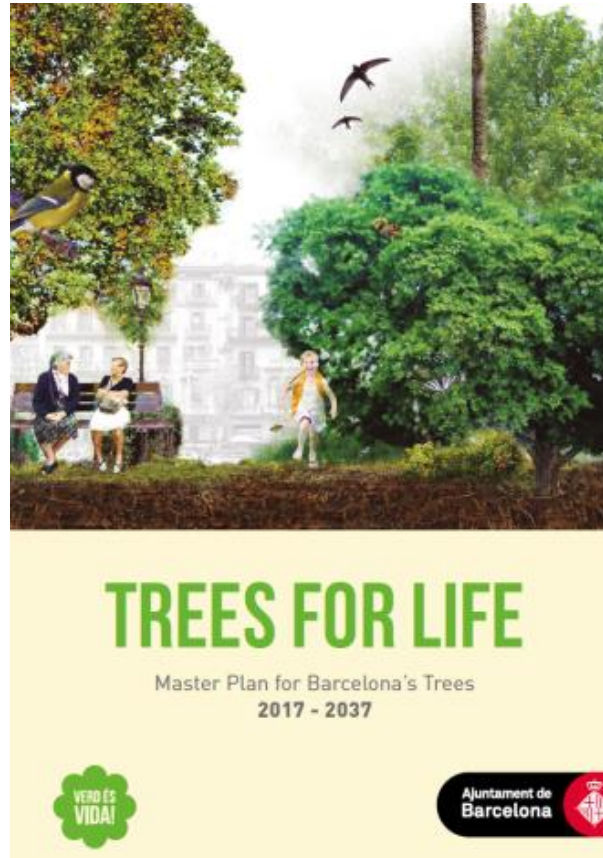
2020-2030



verc



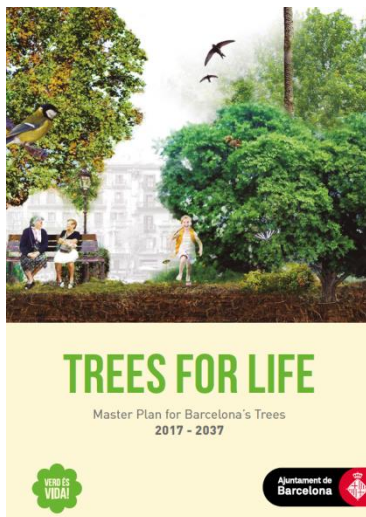
Perquè el verd  
i la biodiversitat  
ens beneficien





## Barcelona Trees for Life Master Plan 2017-2037

---



- Objectives
- Challenges







## OBJECTIVES

1. Having a tree population that forms a real green infrastructure, achieving the maximum value and connectivity with its surroundings (urban and natural).
2. Getting the maximum environmental, social and economic services from the tree population.
3. Having a tree population that is biodiverse, in good condition, protected, safe and which provides the city with identity, through the most efficient and sustainable management possible.
4. Having a tree population that is adapted, resilient and which can be used as a tool for adapting to climate change.
5. To achieve good coexistence between the general public and trees, and encourage society to value trees more.



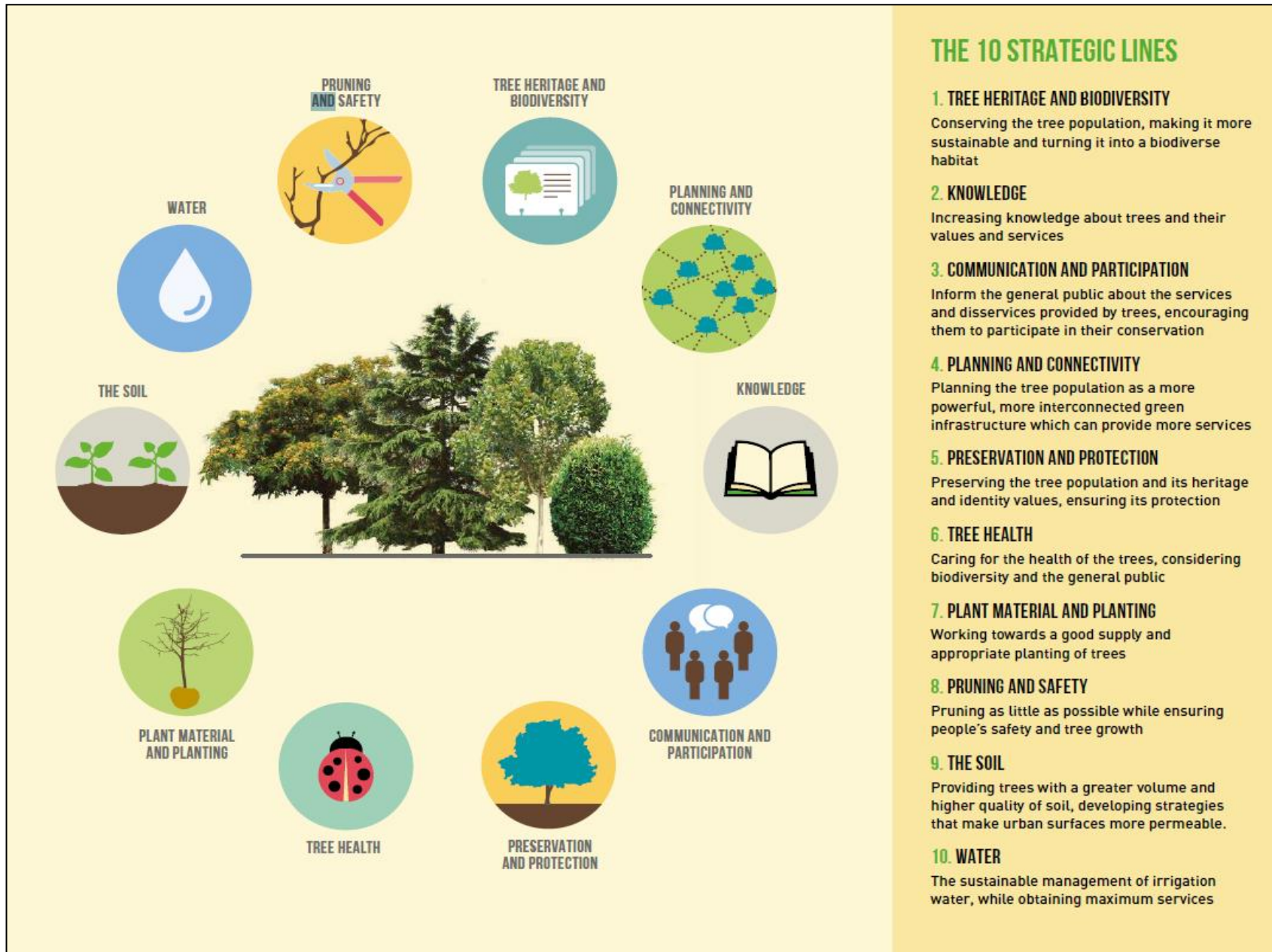


The Plan establishes the following as challenges for 2037:

1. Increasing the city's tree cover by 5%, so that 30% of the city's surface area is covered by trees.
2. Ensuring that within urban areas, 40% of tree species are adapted to climate change, as opposed to the current 30%.
3. Achieve a biodiverse tree heritage in which no single tree species accounts for more than 15% of the total population within the urban area.
4. Provide the general public with all the information on the characteristics and services that every tree in urban areas provides, by means of interactive technologies that foster knowledge and citizen collaboration.
5. To ensure that in all Barcelona primary schools, the children appreciate and can identify the trees in their neighbourhood.







## THE 10 STRATEGIC LINES

### 1. TREE HERITAGE AND BIODIVERSITY

Conserving the tree population, making it more sustainable and turning it into a biodiverse habitat

### 2. KNOWLEDGE

Increasing knowledge about trees and their values and services

### 3. COMMUNICATION AND PARTICIPATION

Inform the general public about the services and disservices provided by trees, encouraging them to participate in their conservation

### 4. PLANNING AND CONNECTIVITY

Planning the tree population as a more powerful, more interconnected green infrastructure which can provide more services

### 5. PRESERVATION AND PROTECTION

Preserving the tree population and its heritage and identity values, ensuring its protection

### 6. TREE HEALTH

Caring for the health of the trees, considering biodiversity and the general public

### 7. PLANT MATERIAL AND PLANTING

Working towards a good supply and appropriate planting of trees

### 8. PRUNING AND SAFETY

Pruning as little as possible ensuring people's safety and tree growth

### 9. THE SOIL

Providing trees with a greater volume and higher quality of soil, developing strategies that make urban surfaces more permeable.

### 10. WATER

The sustainable management of irrigation water, while obtaining maximum services



## LINE 4 - PLANNING AND CONNECTIVITY

Planning the tree population as a more powerful, more interconnected green infrastructure, which can provide more services

**Action 4.3** – Connecting the tree population with urban and natural environments

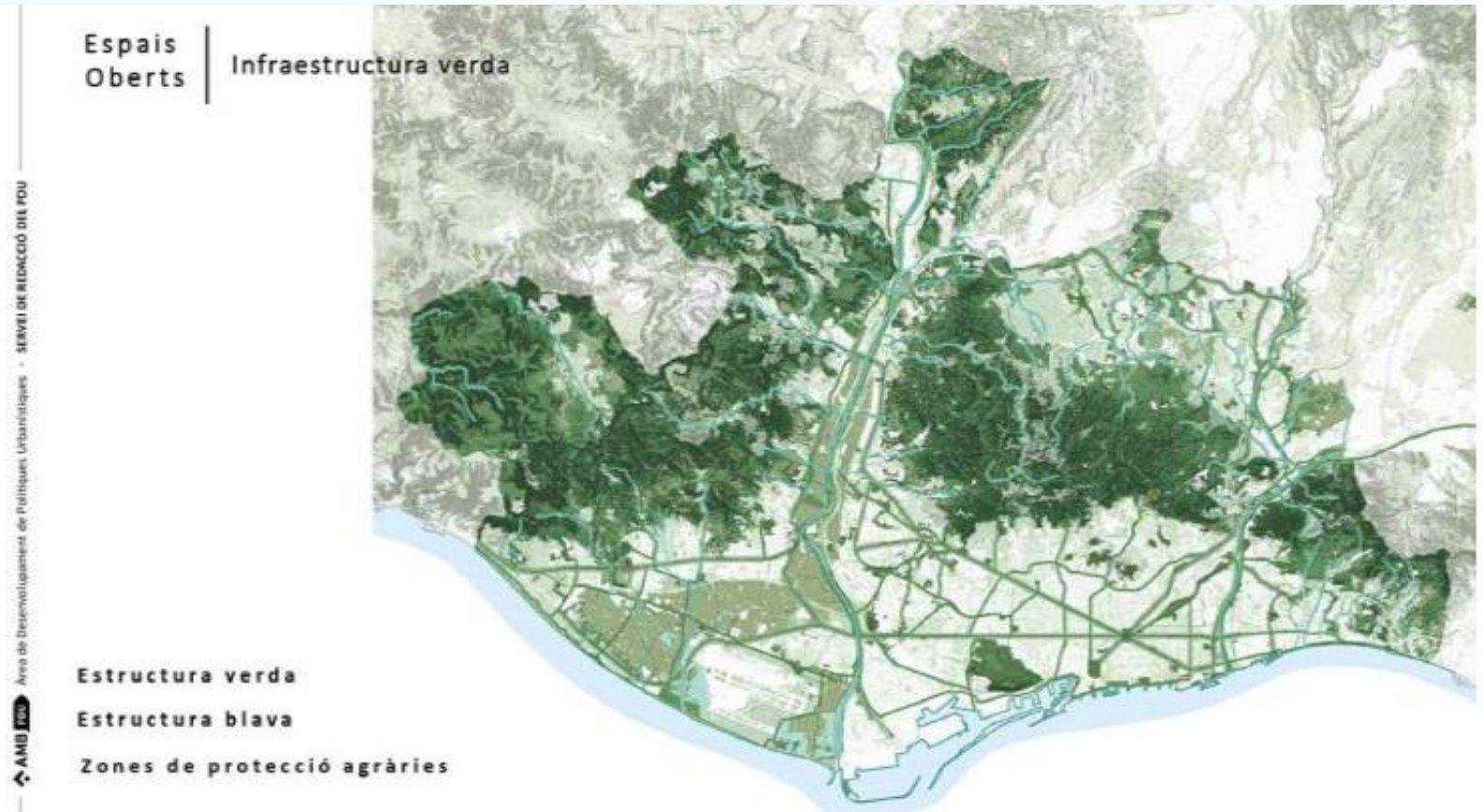






## HOW TO INTEGRATE TREES AND FORESTS INTO URBAN PLANNING?

1/ Incorporate the trees in the planning (Urban Master Plans), trying to preserve as much as possible the existing trees. At the metropolitan and municipal level





## HOW TO INTEGRATE TREES AND FORESTS INTO URBAN PLANNING?

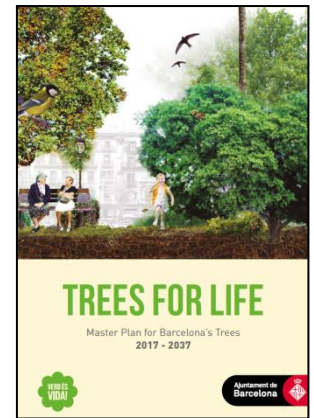
2/ If it's possible, don't remove existing trees. If trees have to be removed for works/ new developments, introduce new criteria (species more resistant to climate change), structural soil improvements, more suitable distances ...



Consell de cent street. "Green axis" project 2021-2023







**Thank you!**