



EuroMed Transport
SUPPORT PROJECT

Road Traffic Safety in Lebanon

Eng. TANIOS BOULOS

General Director of roads and buildings

Ministry of public works in Lebanon



Efforts, plans and remaining challenges In Lebanon

Lebanon is facing a series of amounting crises



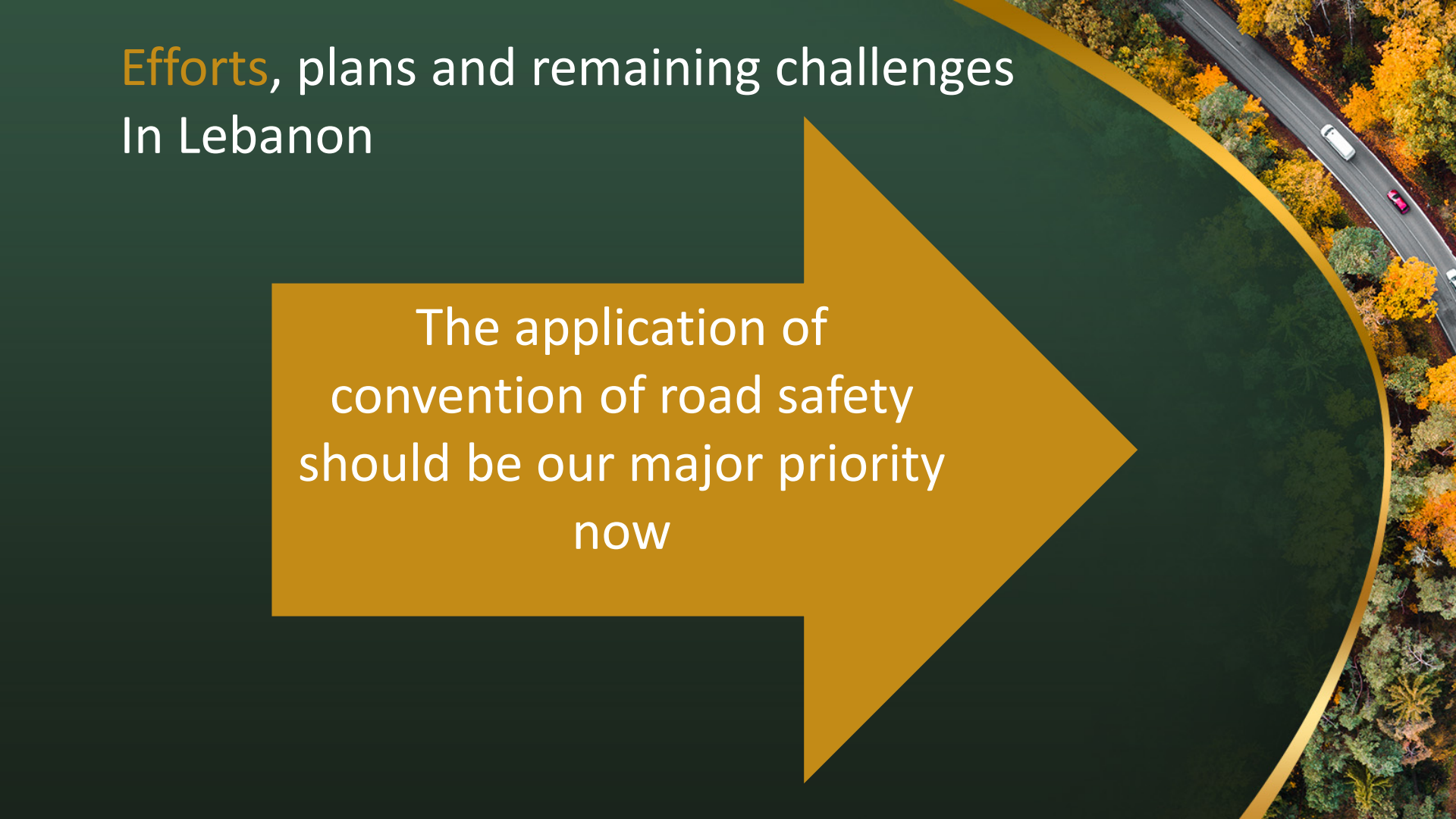
Financial situation is caused by the Covid and Port explosion and other political causes

Beirut's port explosion is one of the the most fundamental cause of the financial situation, Lebanese are still living the struggle

All of these had a bad influence to the conditions of the social and economical activity of the country, mainly road maintenance projects concerning Road Safety

Efforts, plans and remaining challenges In Lebanon

The application of
convention of road safety
should be our major priority
now

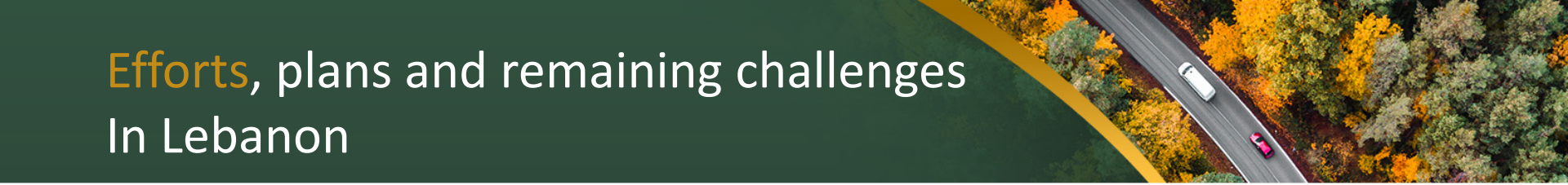


Efforts, plans and remaining challenges In Lebanon

We are still looking forward getting back to Lebanon's
→ normal situation to improve all the rules & decision,
of road safety specially WP1 SESSION 19-20 Geneva



Efforts, plans and remaining challenges In Lebanon



1

Big projects worked on already

- Circular highway about 40 km which helps resolve traffic congestion in Beirut including bridges, tunnels, and utilities funded and supported by the World and European Bank

2

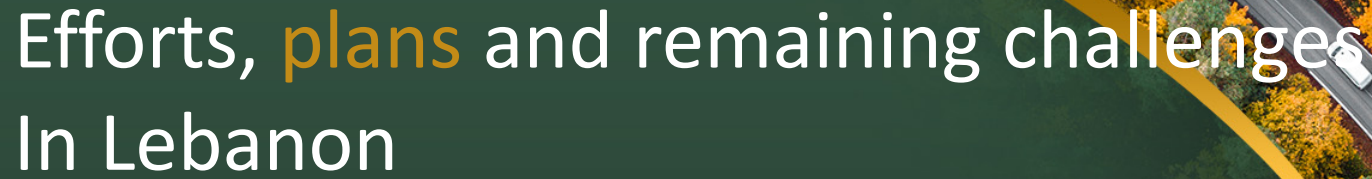
Still pending projects

- Improve public transport (new bridges, bus, line of railways, new facilities) that are still pending due to the situation

3

Road Rehabilitation and Maintenance

- Project funded and supported by the World Bank, to improve the roads conditions and traffic safety by rehabilitation of road networks in Lebanon, especially in rural lagging regions. Works already debuted in December 2020



Efforts, plans and remaining challenges In Lebanon

1

With the the new government, the first target is to solve the economic crises

2

Restart the projects that were pending, especially the ones that help grow the economy and open new opportunities

3

Consider the project of road safety to be the head of our priority list, seing that it concerns the security of the people and help to find the solution of the road traffic congestion in all the cities and to improve the road safety

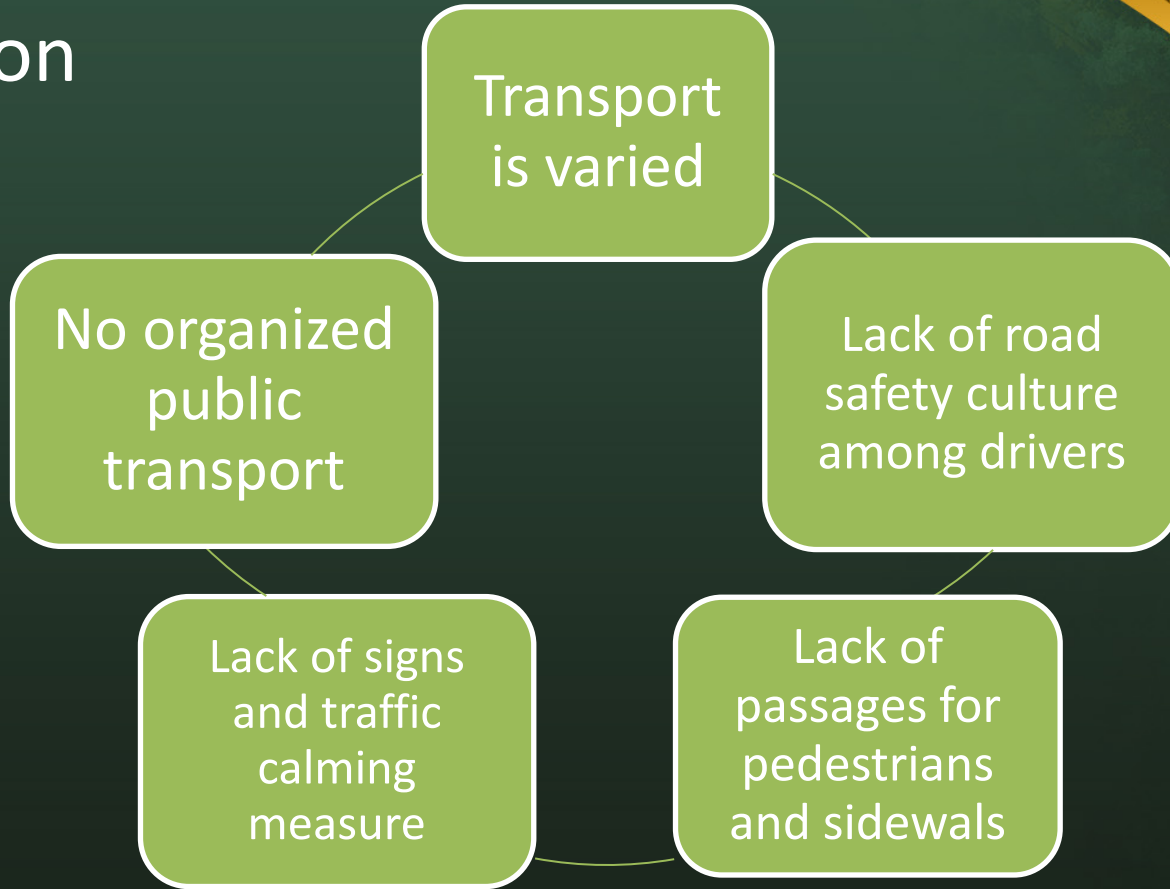
Efforts, plans and **remaining challenges** In Lebanon

Impact:

About 40% of lebanese population are syrian and palestinian refugees, which affect importantly the infrastructure in Lebanon by the pressure on road network and facilities



Efforts, plans and remaining challenges In Lebanon



Efforts, plans and remaining challenges In Lebanon

The rate fall of the lebanese pound is the biggest challenge that the country needs to overcome, since it is stopping us to go forward and reach the goals set for Lebanon



EuroMed Transport
SUPPORT PROJECT

THANK YOU