



Ministerie van Infrastructuur
en Waterstaat

Hinne Groot

7 July 2021

UN ECE expert group international rail passengers

Platform International Rail Passenger Transport



In 2017, fuel combustion across all transport modes was responsible for 25% of all EU-28 greenhouse gas emissions.

If the European Union aims to achieve climate neutrality by 2050, a 90% reduction in transport emissions is required.



The last chance

People plan to fly and drive more post-Covid, climate poll shows

Exclusive: Gap between actions and beliefs threatens green recovery from pandemic

- Coronavirus - latest updates
- See all our coronavirus coverage

Jonathan Watts *Global environment editor*

07:00 Tuesday, 10 November 2020

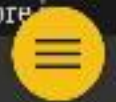
 Follow Jonathan Watts

People are planning to drive and fly more

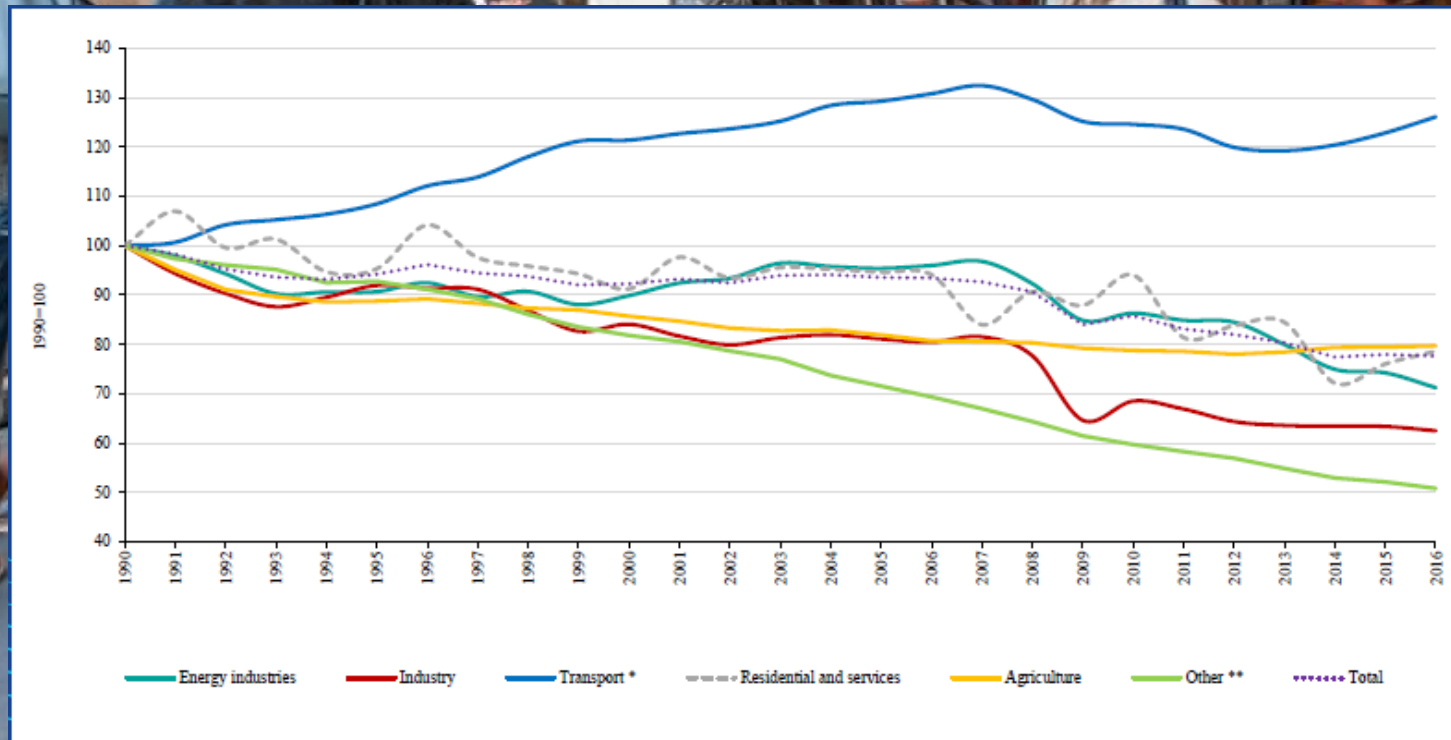
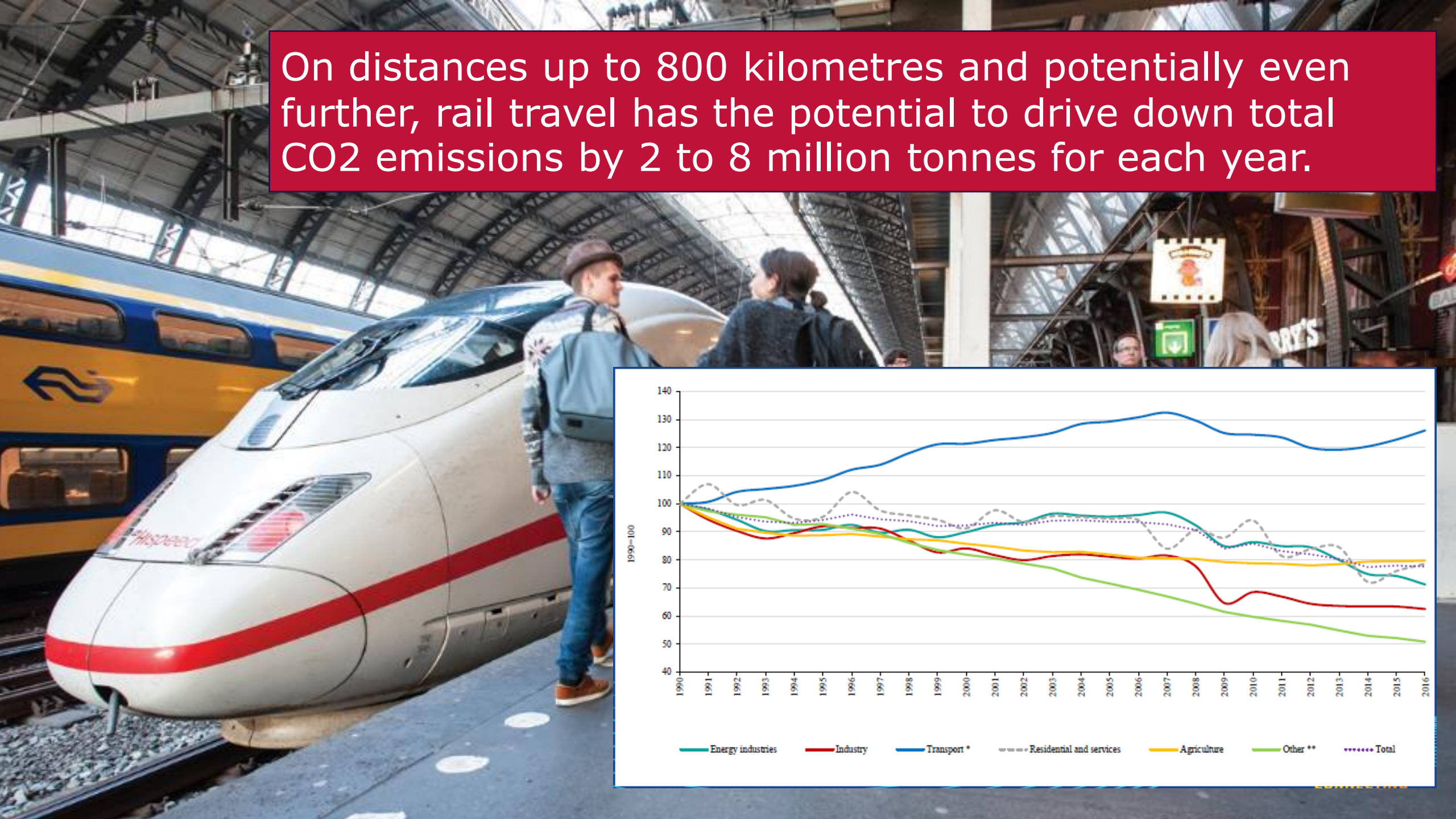
Home

Discover

Live



On distances up to 800 kilometres and potentially even further, rail travel has the potential to drive down total CO2 emissions by 2 to 8 million tonnes for each year.



Appendix B: Top 10 intra-EU relationships with highest potential CO2 emission savings with the medium substitution factor

	Number of passengers	CO2 emissions [kg]	CO2 savings [kg]
<i>London – Amsterdam</i>	6,029,462	364,179,521	193,380,121
<i>London – Paris</i>	3,535,837	200,835,569	117,692,460
<i>Lisbon – Madrid</i>	2,639,444	209,307,926	106,193,640
<i>Düsseldorf – London</i>	2,046,603	151,653,341	64,339,426
<i>Stockholm – Copenhagen</i>	2,027,682	138,085,150	53,494,908
<i>Amsterdam – Paris</i>	1,568,314	93,785,187	52,626,703
<i>Frankfurt – London</i>	2,437,879	209,413,854	51,928,226
<i>Vienna – Frankfurt</i>	2,126,201	164,780,600	45,455,144
<i>Paris – Frankfurt</i>	1,419,750	108,185,024	44,352,780
<i>Amsterdam – Frankfurt</i>	905,561	63,208,158	42,265,352



Air – rail action agenda focusses on 6 priority destinations





Ministers declaration 4 June 2020 on developing international rail passenger transport

- › International rail passenger transport not living up to its potential
- › UN SDG's on resilient infrastructures, sustainable cities and climate action

- › Ministers considered the need to :
 - Include international rail passenger transport in the EU Green Deal agenda;
 - Work together in a Platform of Member States in close cooperation with EC / ERA / OTIF and railway sector mirror group





Developing international rail passenger transport on the European agenda

- › Ministers declaration June 2020 on international rail passenger transport
- › European Commission workplan 2021 includes passenger rail action plan, October 2020;
- › European Commission smart and sustainable mobility strategy on i.a. intermodality and 15 pilots new international rail passenger services, December 2020
- › Kick off Year of Rail, sector statement on international rail passengers, 29/30 March 2021
- › Progress Report platform international rail passengers presented to transport council 3 June 2021
- › Council conclusions development of rail 3 June 2021





Platform International Rail Passengers

- > The Platform envisages a holistic approach to bringing European countries and sector initiatives together
- > To improve framework conditions for developing international rail passenger services.
- > In order to focus on different themes, the Platform is divided into the following four subgroups:





Progress Report platform IRP 29/03 (1)

> Recommendations on 4 areas:

– (A.) Passenger experience:

- Accelerate digitilization;
- Easy access travel information and ticketing;
- 3rd party ticket vendors;
- Assistance persons with reduced mobility (PRM).

– (B.) Passenger network:

- European regular interval timetable (Europatakt);
- TEE 2.0, according to market demand;
- Time Table Redesign. Implementation 2025;
- 15 pilots for developing new international services;
- Night trains.





Report platform IRP 29/03 (2)

- (C.) Green Deal, including infrastructure:
 - TEN-T implementation;
 - High speed connecting capitals and major cities;
 - Develop concept passenger hubs for better intermodality
 - Connectivity index;
 - Innovation & Smart and Sustainable Mobility;
 - Intermodality aviation – rail.
- (D.) Regulatory framework:
 - Regulatory convergence;
 - Access rolling stock;
 - Alignment open access versus clockface timetable;
 - Cooperation PSO competent authorities.





Passenger Hubs, some considerations. See also Paragr 3.3.4 progress report

- › Hubs within 4-5 hours distance and 500-800km;
- › Europatakt, facilitating regular timetable between international rail passenger hubs.
- › Impact on national / regional rail passenger transport to be assessed
- › Intermodality condition / objectives with aviation, maritime and urban transport;
- › Facilitator or obligation





Create common International rail passengers transport agenda



Hinne Groot



Coordinator international rail affairs



Hinne.groot@minienw.nl



More information

- > Progress report 3 June 2021:
- > [Better rail connections for Europe's passengers | Publication | The Netherlands at International Organisations \(permanentrepresentations.nl\)](#)
- >