

The COVID-19 Infection Survey

Ruth Studley, Deputy Director for the COVID-19 Infection Survey Analysis Division

Sarah Crofts, Head of COVID-19 Infection Survey Dissemination

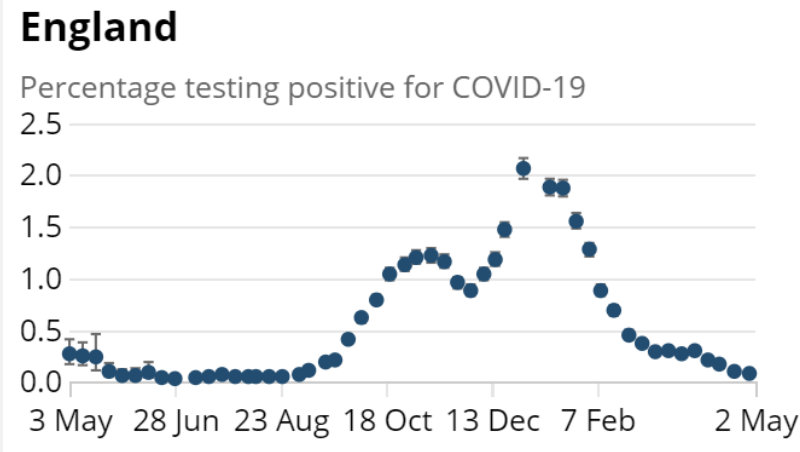
Survey Design

- Aim: Measure rates of infection and how many people have developed antibodies to the virus over time
- Sample: Representative of UK by geography, ethnicity and age
- Method: Repeated at-home (infection) and capillary blood (antibody)
 - Swab: Every weekly visit that takes place in the first month (week 0-4) 5 visits in total, then monthly for 12 months
 - Blood: 20% of swabbed people, every month for 12 months
- Pilot: 11,000 households, 25,000 people
- Main study: Now conducted over 3 million tests



What have our findings shown?

- Data from the CIS has directly supported key decision making:
 - Regional lockdown
 - December lockdown
 - New variant
 - Roadmap



Covid: England's regional tiers to be set out

🕒 26 November 2020 | 🗨️ Comments

Covid-19: Christmas rules tightened for England, Scotland and Wales

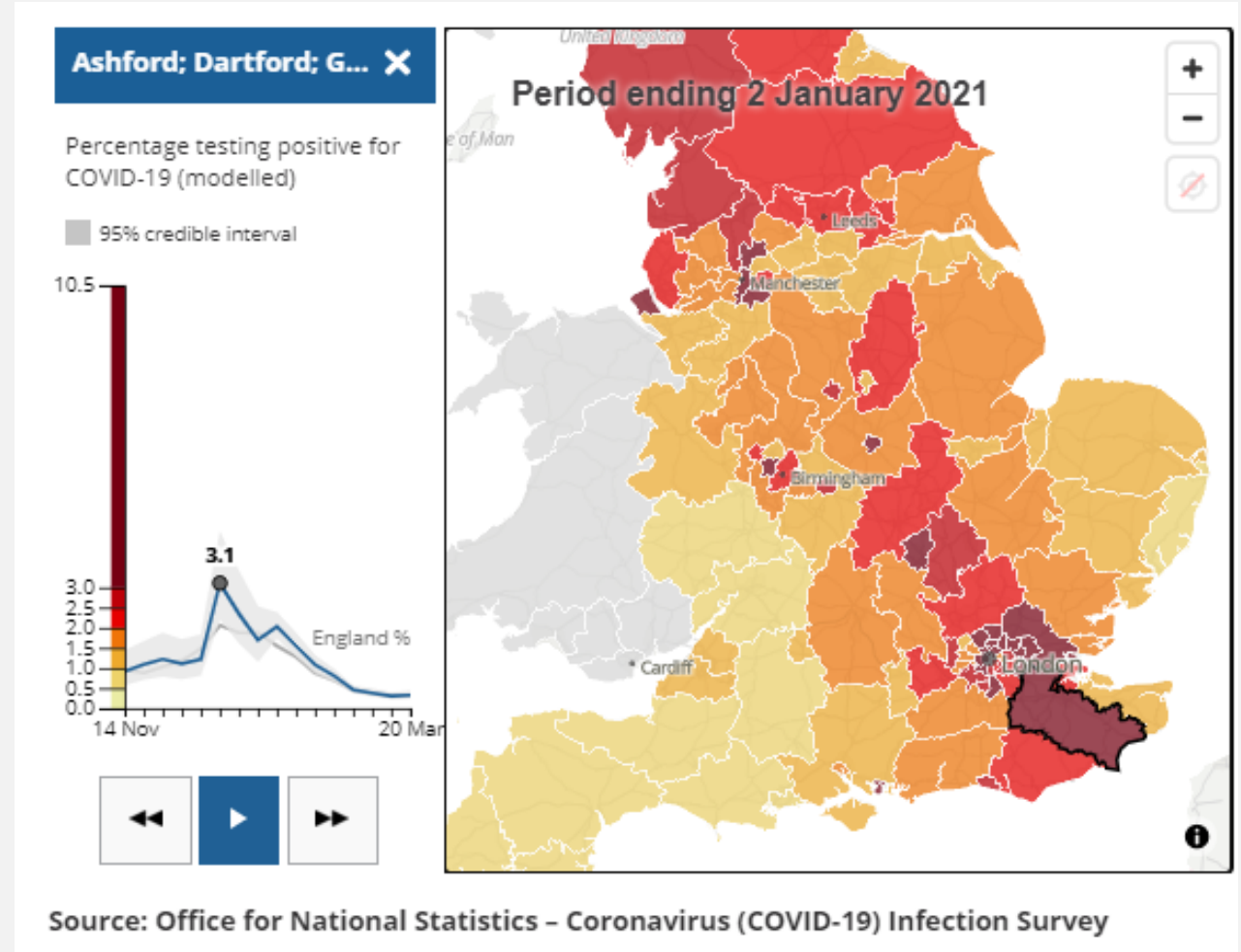
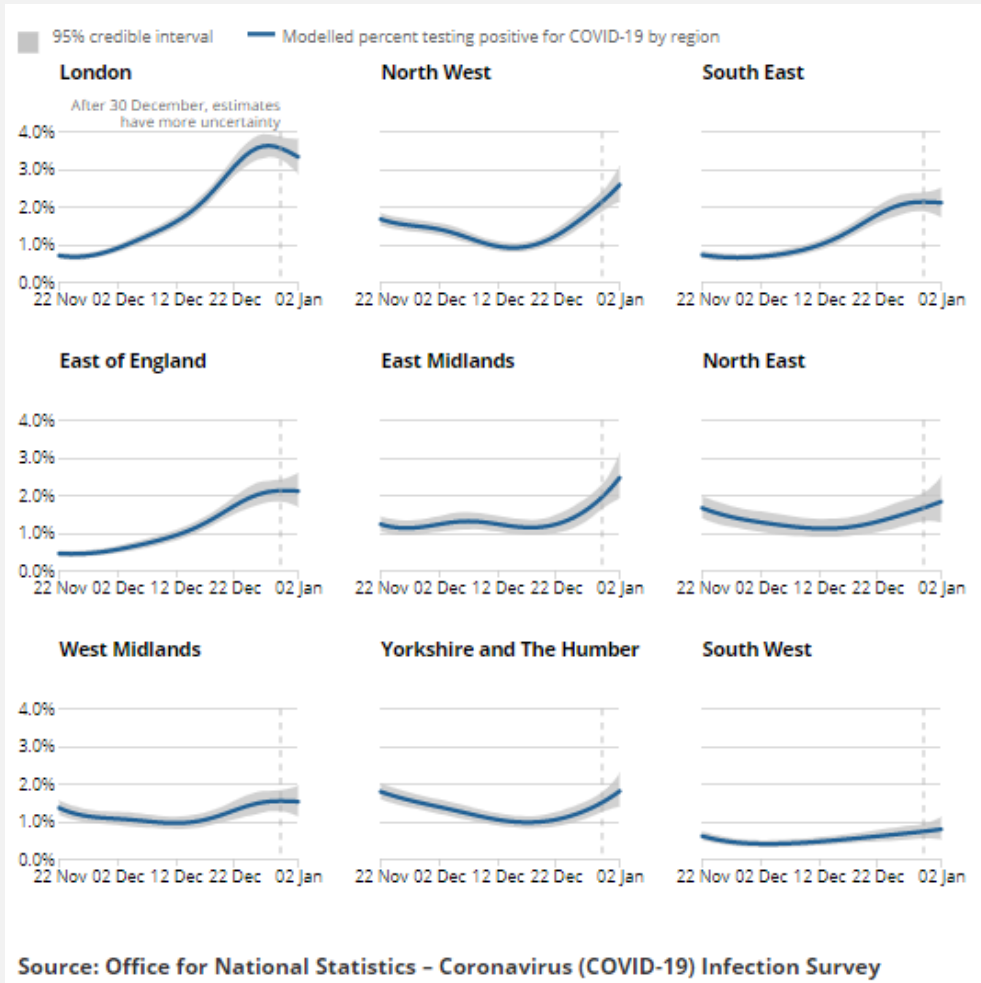
🕒 20 December 2020 | 🗨️ Comments

Confirmed cases of COVID-19 variants identified in UK

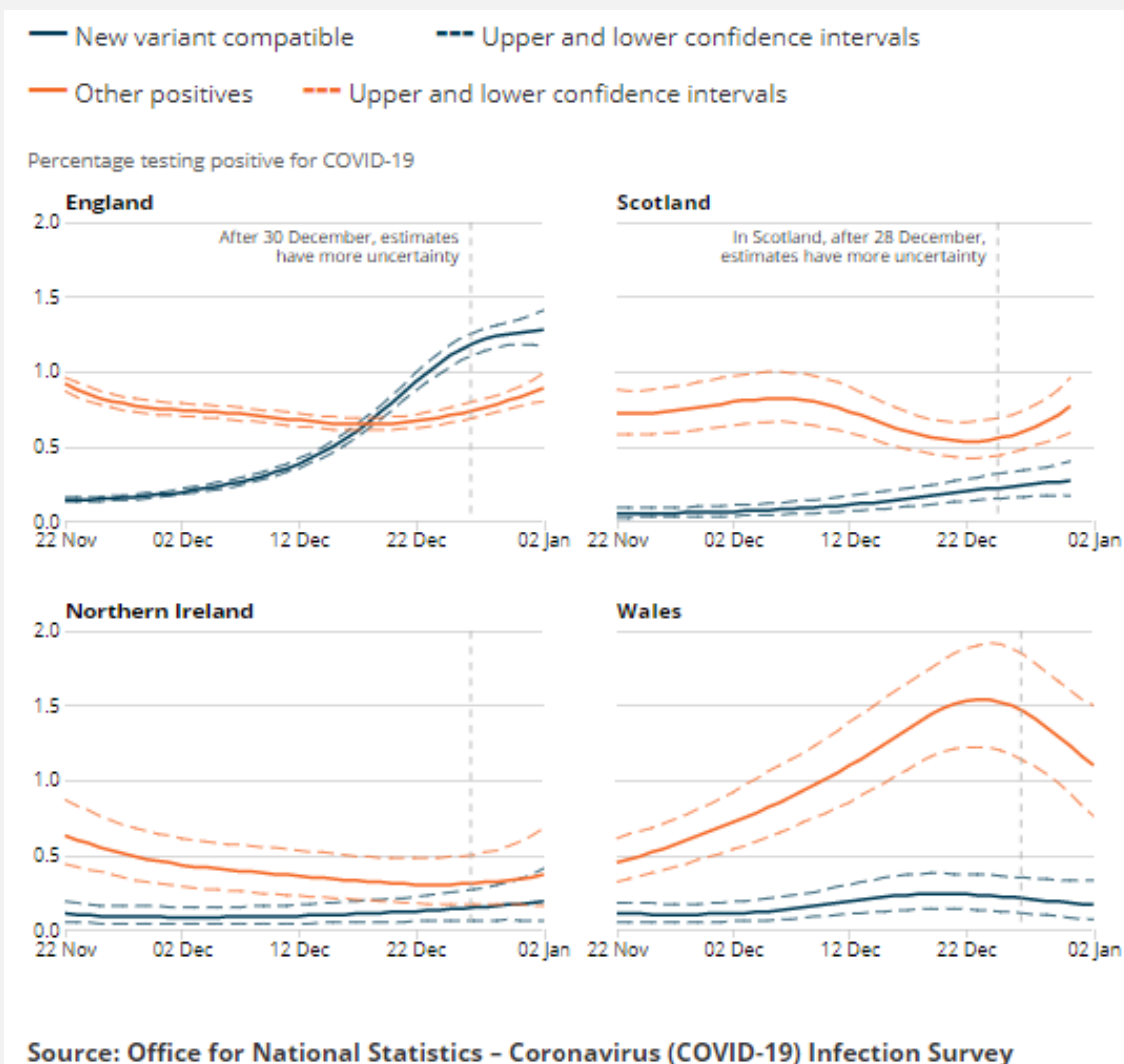
Press release

Prime Minister sets out roadmap to cautiously ease lockdown restrictions

Analysis to inform local lockdowns



Analysis to understand new variants

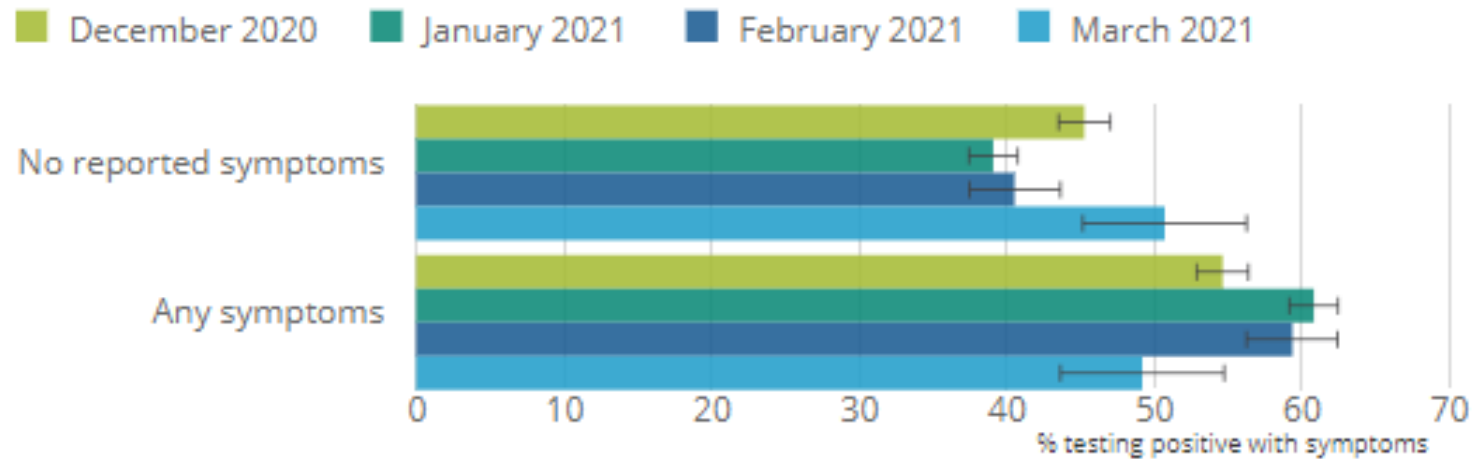


Percentage of cases that are positive for ORF1ab and N genes, 30 September to 09 December		
This analysis was undertaken by Sarah Walker at the University of Oxford		
	Week starting 09/12/2020	
Country	% positive for ORF1ab and N genes	Number of positives
England	36	670
Wales	28	29
Northern Ireland	17	12
Scotland	14	66
Region of England		
North East	15	33
North West	17	81
Yorkshire and the Humber	5	65
East Midlands	16	57
West Midlands	11	61
East of England	59	59
London	62	209
South East	43	79
South West	27	26

Analysis to inform testing strategies

Figure 1: 49% of people testing positive in the UK reported symptoms in March 2021

Percentage of people who reported having symptoms when testing positive for the coronavirus (COVID-19), including only those who have strong positive tests (Ct less than 30), from 1 December 2020 to 22 March 2021, UK



Source: Office for National Statistics – Coronavirus (COVID-19) Infection Survey

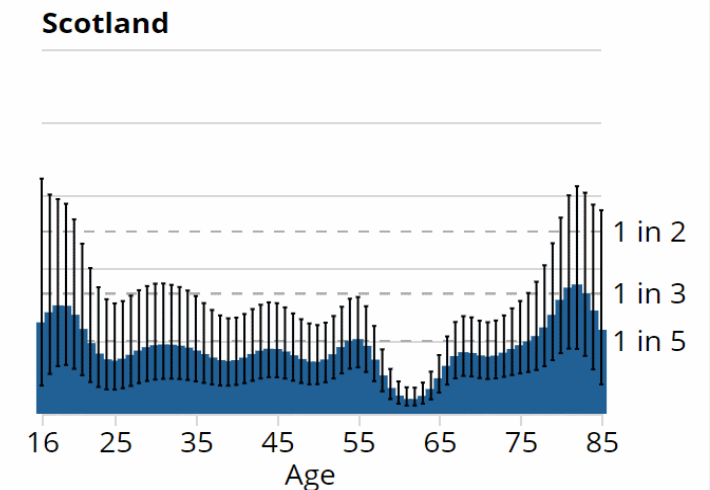
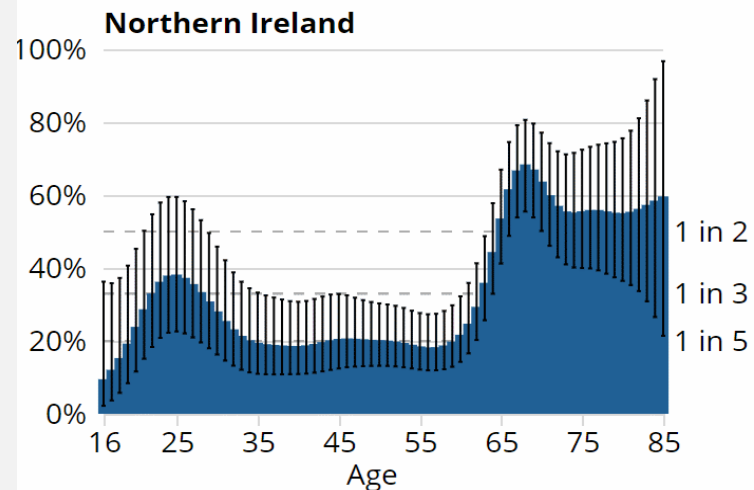
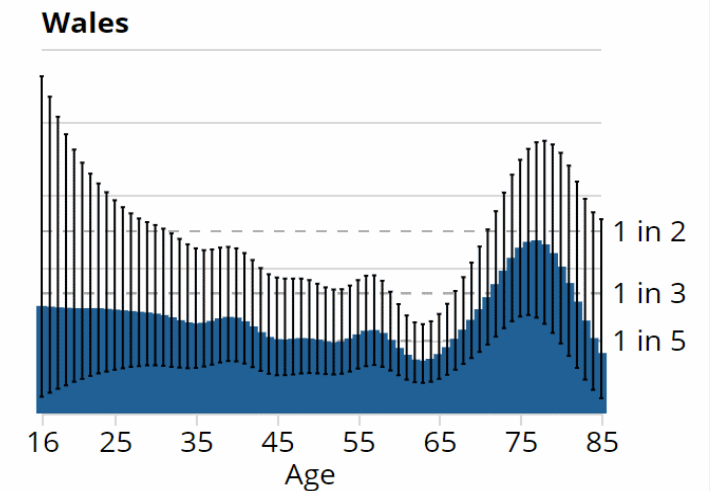
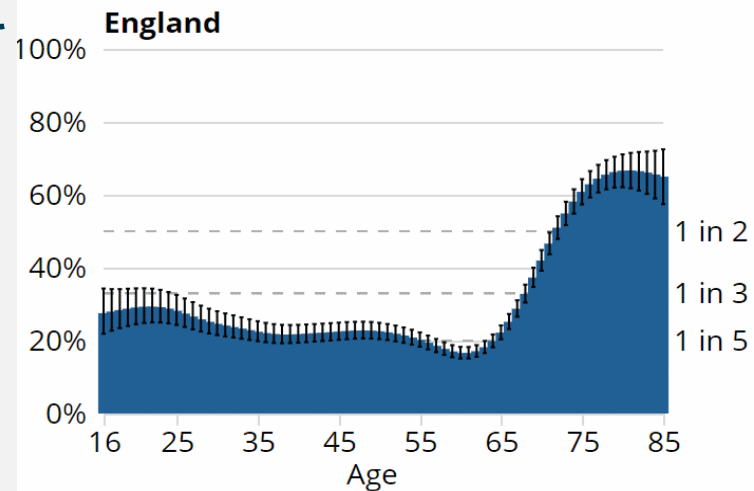
Dissemination

- Sharing across Government for operational decision making and helping the public understand



Percentage of people testing positive for antibodies, February to April 2021

16 February 2021



Thank you

Any questions?