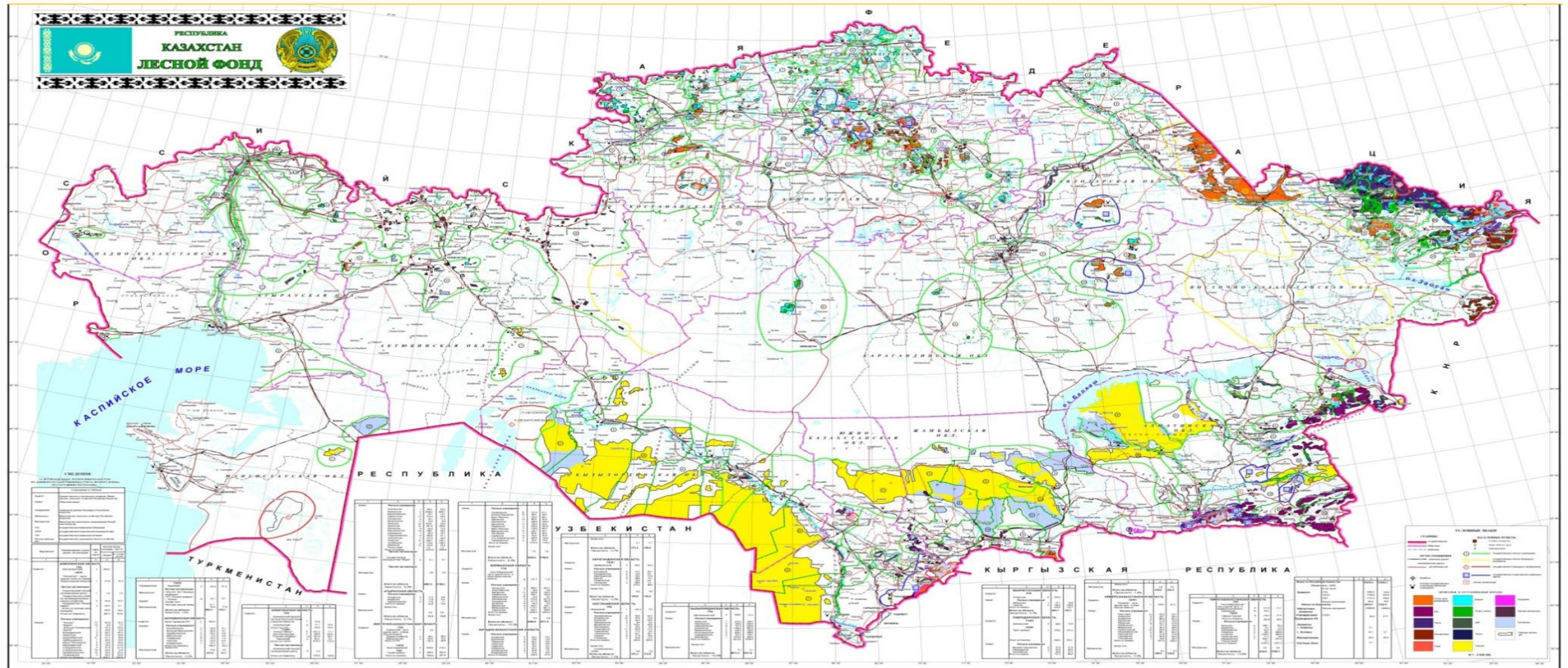




Forestry and Wildlife Committee Ministry of Ecology, Geology and Natural Resources
of the Republic of Kazakhstan

Republic of Kazakhstan

Forest fund of Kazakhstan



Digital aerial photography and satellite imagery is the basis for orthophotomaps in forest management, which are then used to create electronic forest maps.

AERIAL PHOTOGRAPHS

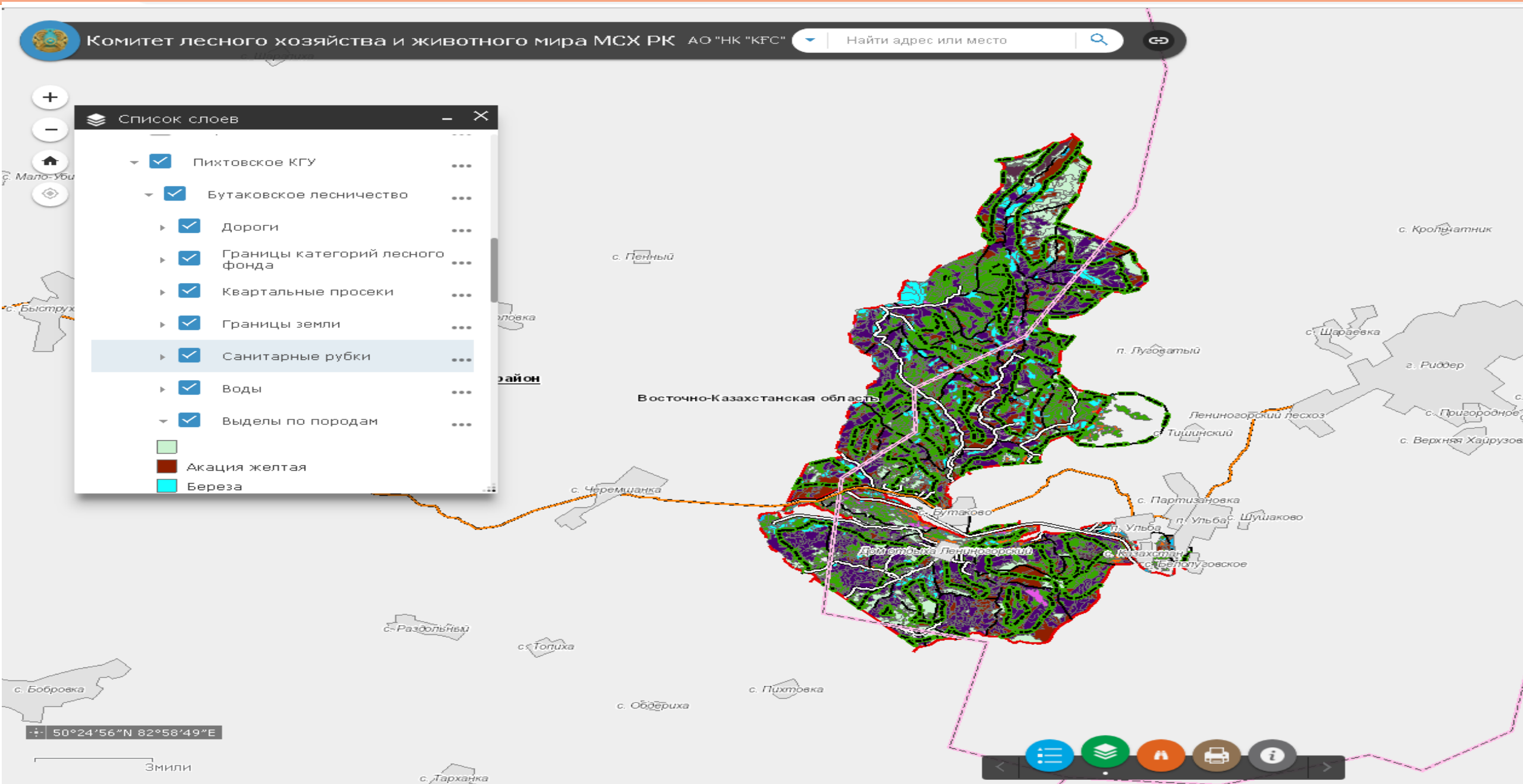


Geoportal of the Committee for Forestry and Wildlife

Based on remote sensing data, the work is being done on the space monitoring of forest resources in Kazakhstan and geological services have been developed for the Forestry and Wildlife Committee Ministry of Ecology, Geology and Natural Resources of the Republic of Kazakhstan

For the control, management, planning, and monitoring of the State Forest Fund of the Republic of Kazakhstan - actual digital vector maps of forests for the whole of Kazakhstan based on remote sensing data were created for the first time	Photogrammetric processing of space images to the L3 and L5 level (orthographic mosaic) is carried out to create forest management plans and maps of the State Forest Fund of the Republic of Kazakhstan
For monitoring and control over the wood logging in the State Forest Fund of the Republic of Kazakhstan - operational detection of wood logging with the filling of appropriate data, determination of the legality and planning of wood logging	For detection, monitoring and control over the forest and steppe fires of the State Forest Fund of the Republic of Kazakhstan - forecasting of fire danger in the territory of the Republic of Kazakhstan, monitoring of forest and steppe fires
For monitoring and control over the burned areas of the State Forest Fund of the Republic of Kazakhstan - operational identification of burned areas and assessment of the status of burned forest areas with the filling of appropriate data	

SYSTEM OF REQUESTS IN THE GEOPORTAL



Program for creating electronic forests maps

Mapinfo Professional is the main programs in the process of production of planning and cartographic materials (forest maps) in the forestry system.



Main features of Mapinfo Professional program

Direct access to remote data bases, such as SQL Server.

Direct access to remote data bases, such as SQL Server.

Possibility to create marginal notes for any map layers.

Changing map projections on the display during the digitization process.

3D-Maps, thematic raster maps and prism maps.

You can put raster images under vector maps.

Transferring the contents of MapInfo windows to other programs through the OLE mechanism.

A versatile set of drawing and editing tools, as well as other map editing features.

Crystal Reports package allows you to create professional reports on tabular data directly in Mapinfo.

High-quality printing and exporting capabilities.

Thematic maps allow you to analyze data with high visibility.

The main problems in the field of forestry and the tasks to solve them

At present, the major problems in the field of forestry are:
equipping the material and technical base of forestry and environmental institutions;
development of tourism infrastructure;
preservation of flora and fauna;
funding the performance of environmental protection, scientific and environmental education activities.

Currently, one of the solutions to the problems of the Ministry for the next 5 years is the adoption of a strategic document called "Zhasyl Kazakhstan" or the transition to a green economy.



KATON-KARAGAY
THANK YOU!
STATE NATURAL
NATURAL PARK

