

BACK TO A SUSTAINABLE FUTURE



RESILIENT CONNECTIVITY FOR SUSTAINED RECOVERY AND ECONOMIC GROWTH

TRANSPORT STATISTICS



UNECE

Transport SDGs in the UNECE Region

Alex Blackburn, UNECE

Working Party on Transport Statistics, 9-11 June
2021



SDG Measuring and Monitoring at UNECE

- Developing countries' statistical capacities
- Defining methods and choosing indicators for the SDGs
- Data production for (e.g.) water, transport, forestry statistics
- Considering the SDGs in policy formulation (e.g. infrastructure planning, Environmental Performance Reviews).

Flagship publication

- National challenges in measuring and monitoring the SDGs
- Global, regional and national responses
- Conclusions and policy recommendations

Publication has input from every ECE sub-programme. National responses and challenges come from a survey of NSOs conducted in December (with excellent participation.)

<https://unece.org/info/UNECE-and-the-SDGs/pub/355192>

UNECE

**Measuring and Monitoring Progress
Towards the Sustainable Development Goals**



UNITED NATIONS

Measuring and Monitoring Progress
Towards the Sustainable Development Goals



Key policy recommendations

- Name a **lead agency** for SDG coordination
- Improve NSO access to admin and non-traditional data sources across government, both to fill data gaps and improve disaggregation.

<https://unece.org/info/UNECE-and-the-SDGs/pub/355192>

Nexus Approach: How does this Relate to WP.6?



- In line with ITC strategy, WP.6 has a mandate to explore relationships between transport and other domains.
- Future meetings can explore energy efficiency, sustainable mobility in cities etc.
- What “nexus” topics would you like to see discussed at WP.6?

Transport-Related SDGs

Transport-Related SDGs Overview



- Background formal documents number 1 and 8 (see unece.org/transport/events/wp6-working-party-transport-statistics-72nd-session)
- The situation in Road Safety, Modal Shift and Public transport access in ECE region.
- What additional indicators are appropriate for the UNECE region?

Road Safety: SDG 3.6.1



3 GOOD HEALTH AND WELL-BEING

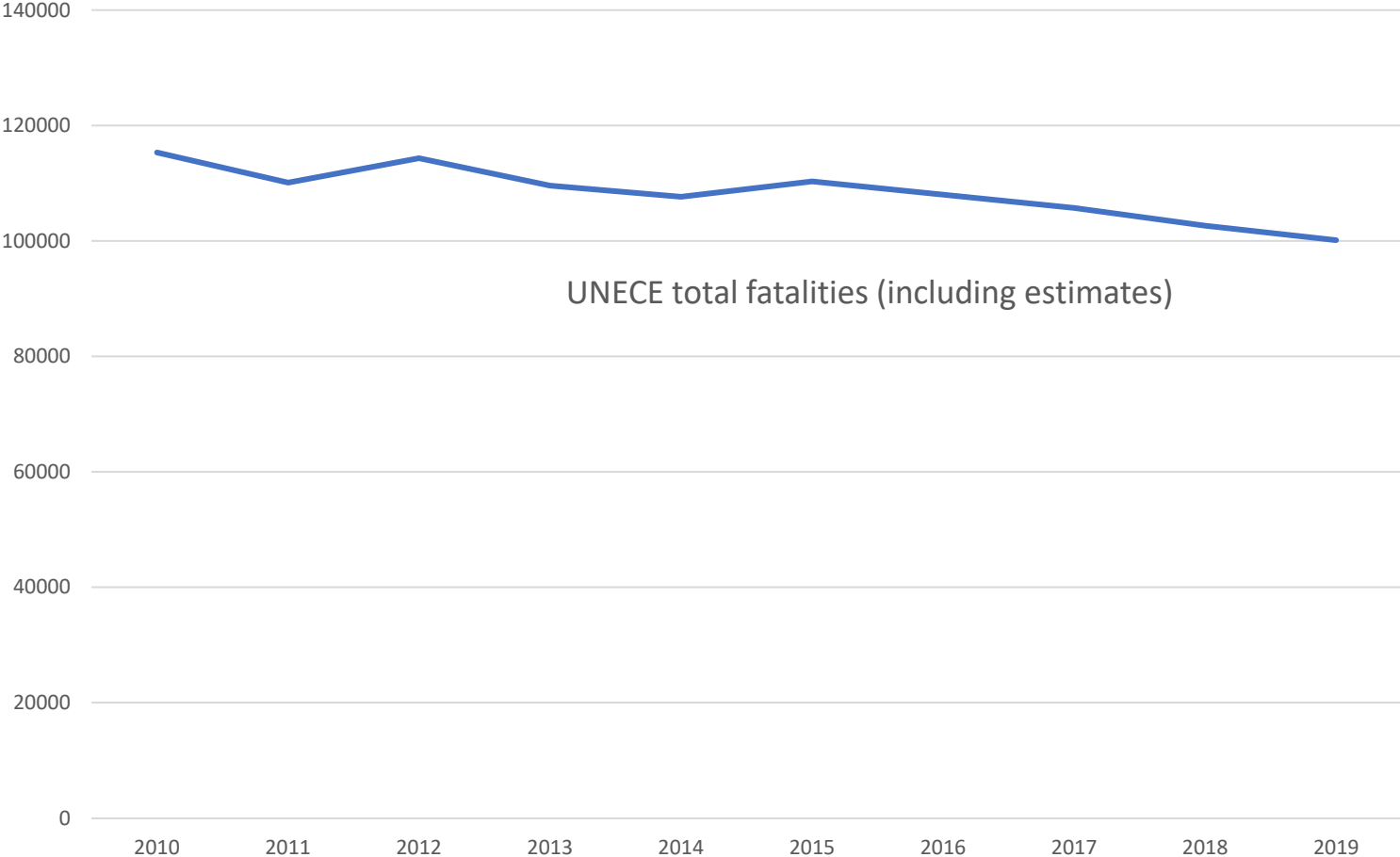


UNECE Road Accident Statistics



- RAS questionnaire sent out March 2021, deadline of 7 May.
- All countries who responded provided 2019 data; 16 countries could also provide 2020 data.
- More countries provided detailed breakdowns (thanks!)
- CARE data obtained from Eurostat in mid-May.

UNECE Road Safety Performance



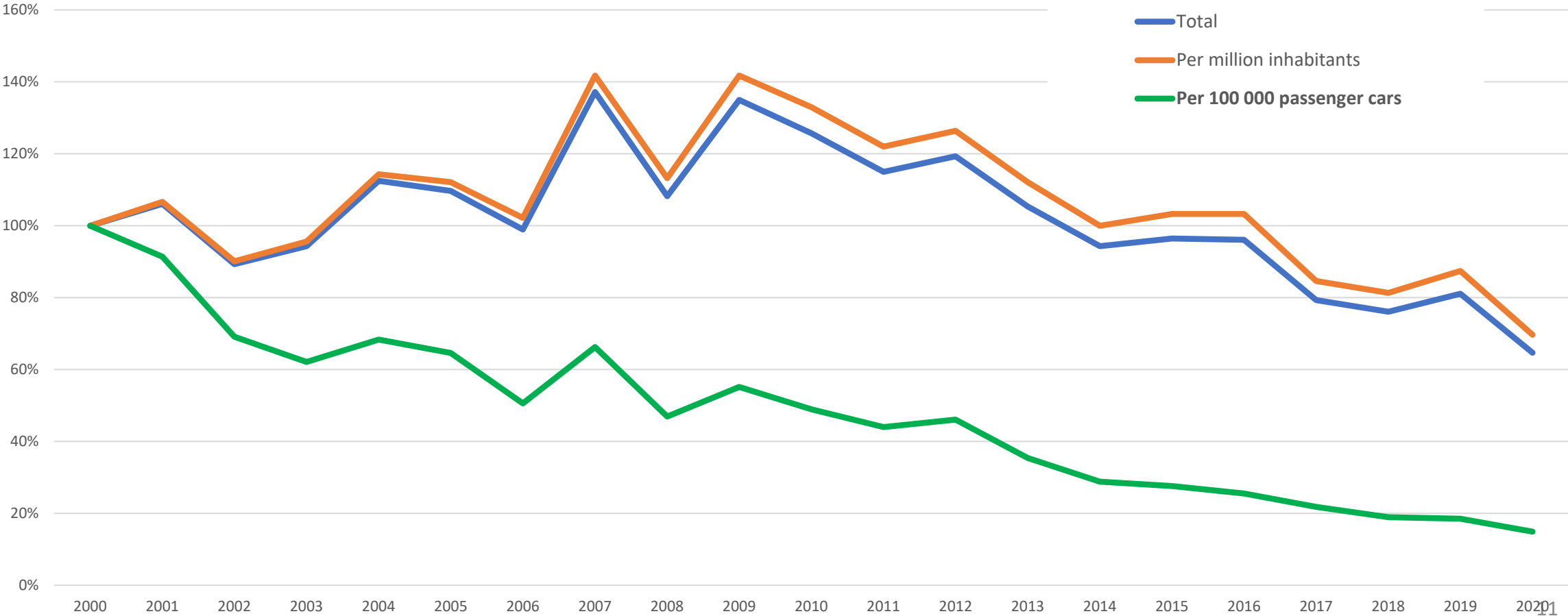
13% decline 2010 to 2019.

World-beating, but still severely short of global 50% reduction target.

UNECE Road Safety Performance



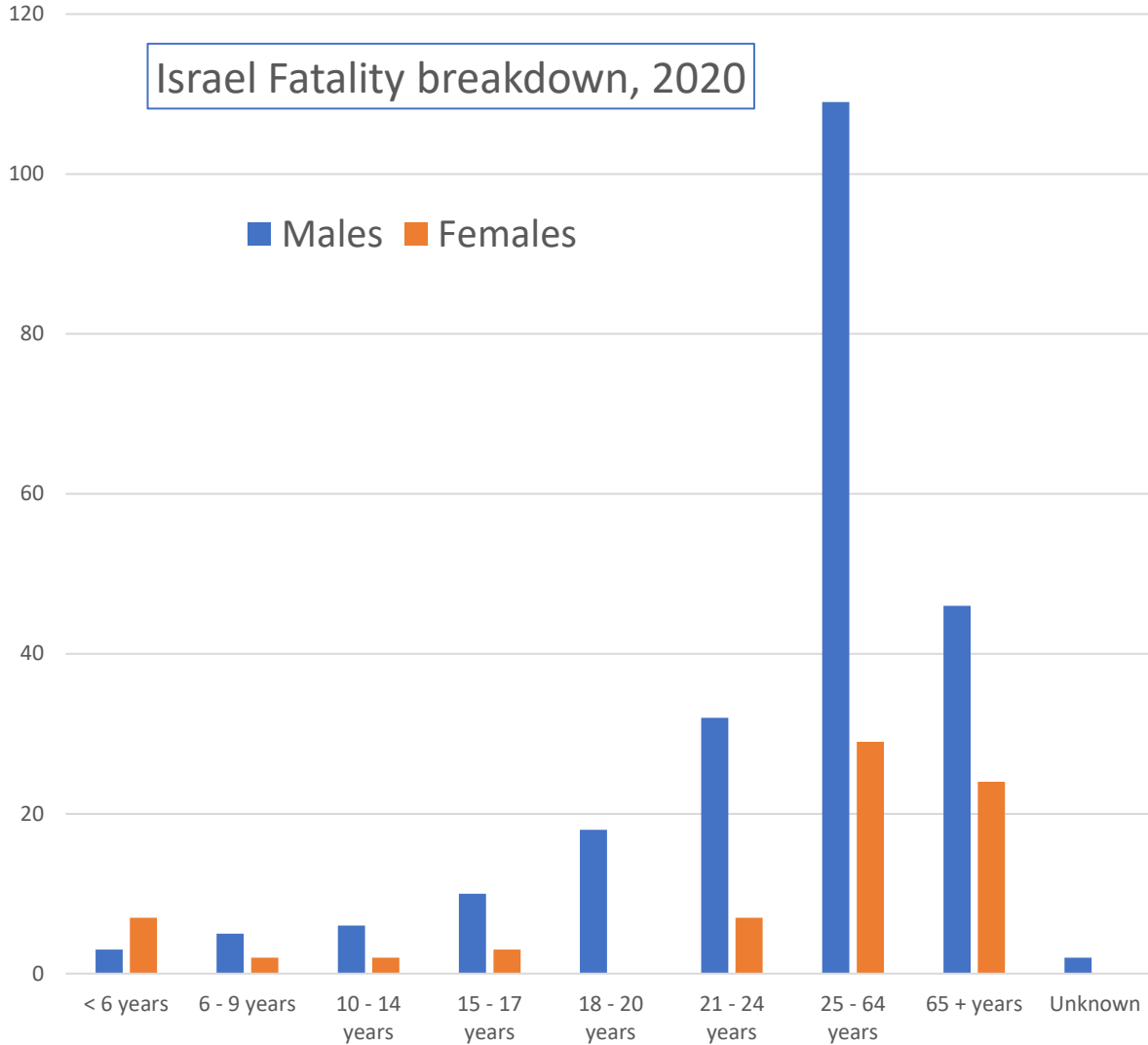
Albania road fatalities (2000=100)



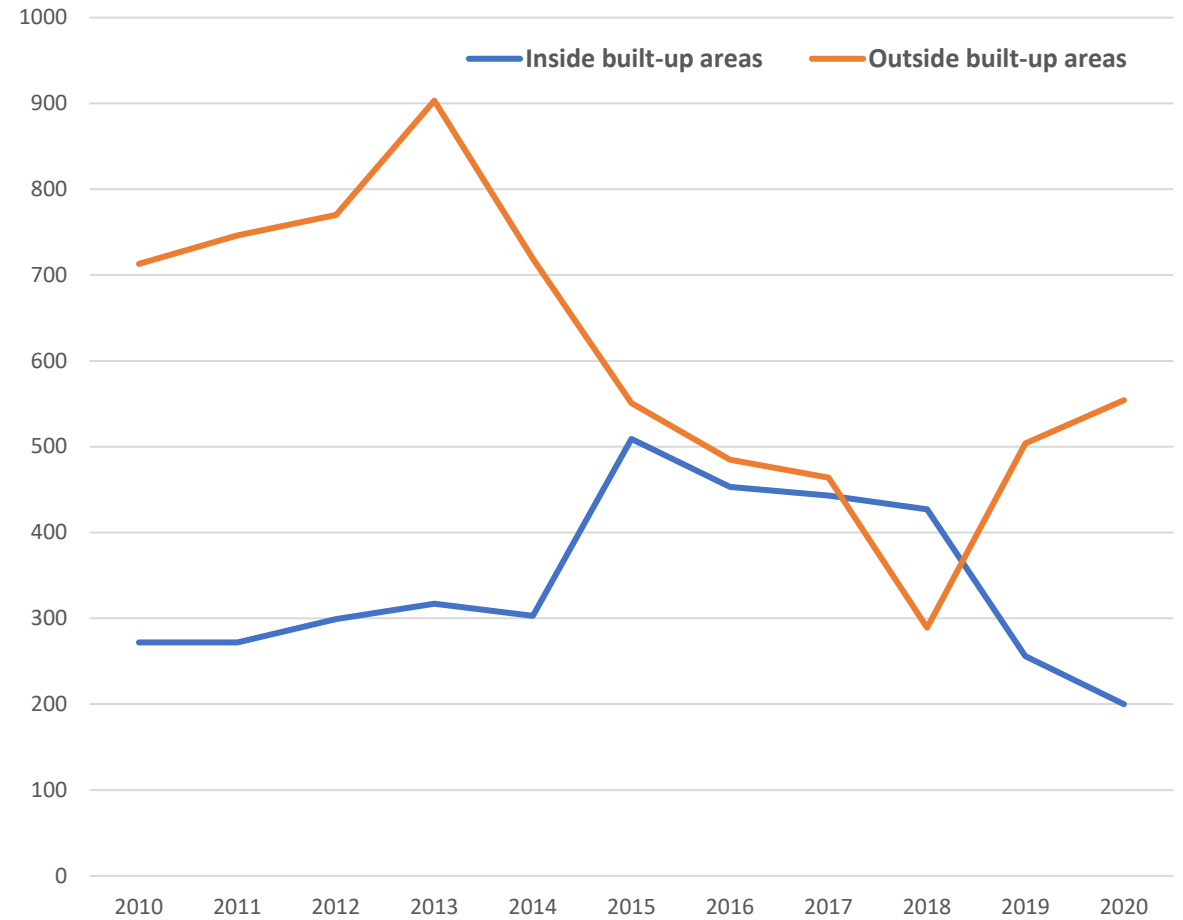
Road Safety: Extra detail allows better analysis



Israel Fatality breakdown, 2020



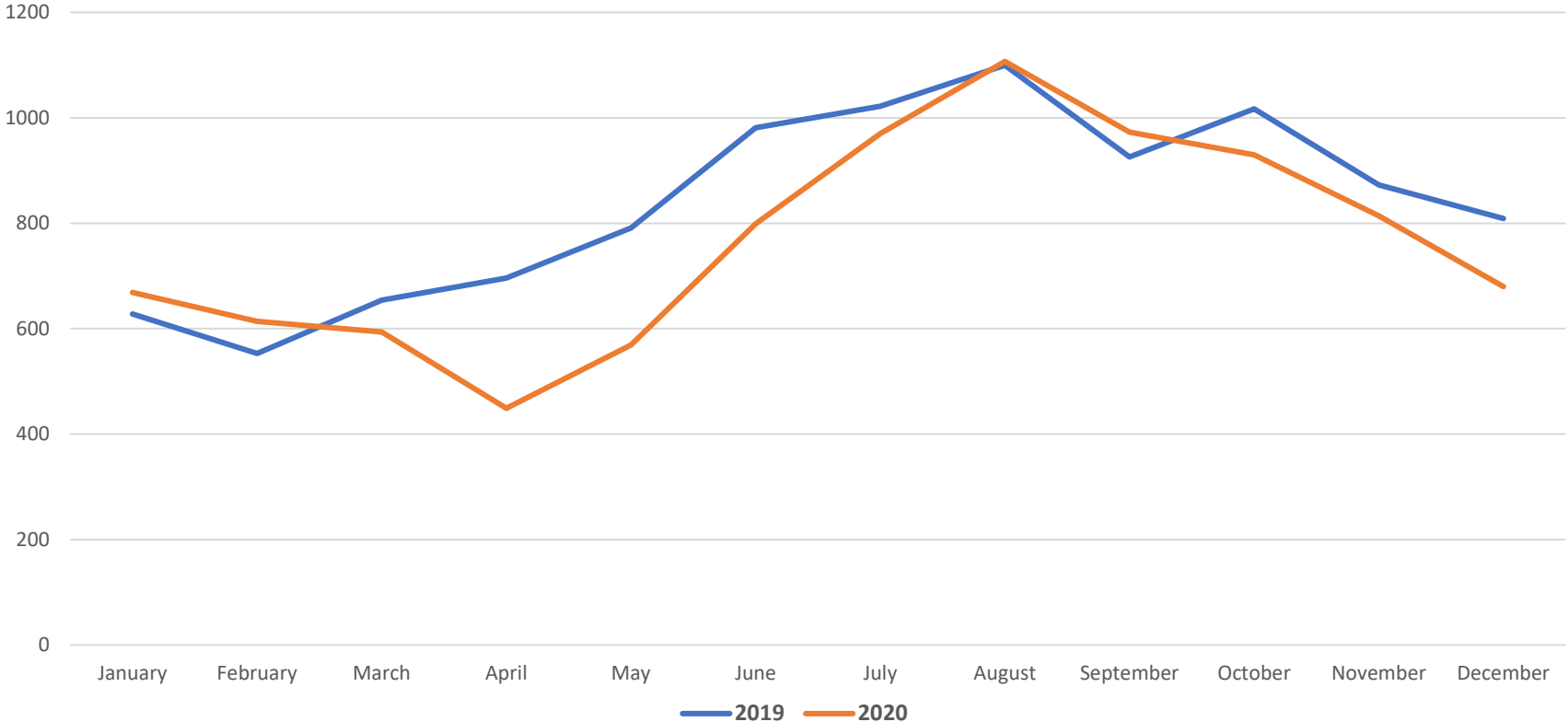
Kyrgyzstan Fatalities by location, over time



Road safety performance in 2020



Available countries* simple total, by month



12 countries saw fatalities decline while five saw increases.

Data only for Albania, Armenia, Azerbaijan, Belarus, Georgia, Iceland, Israel, Kyrgyzstan, Republic of Moldova, Serbia, Slovakia, Turkey

Modal Split: SDG 9.1.2



9 INDUSTRY, INNOVATION AND INFRASTRUCTURE



SDG 9.1.2: Freight modal split



- Freight modal split broadly constant over last few years at ECE level.
- 2020 formal doc2 discussed a framework for this indicator at national level.



Public transport: SDG 11.2.1



11 SUSTAINABLE CITIES AND COMMUNITIES



Transport-Related SDGs



Regional Specific Indicators

Regional Specific Indicators



- In addition to global indicators, regions + countries may choose further indicators that reflect their circumstances.
 - When data are widely available
 - Indicator should have a clear interpretation.
- We can endorse ECE-specific indicators that are **appropriate to measure sustainable inland transport** in our region.
- What could they be?

Regional Specific Indicators

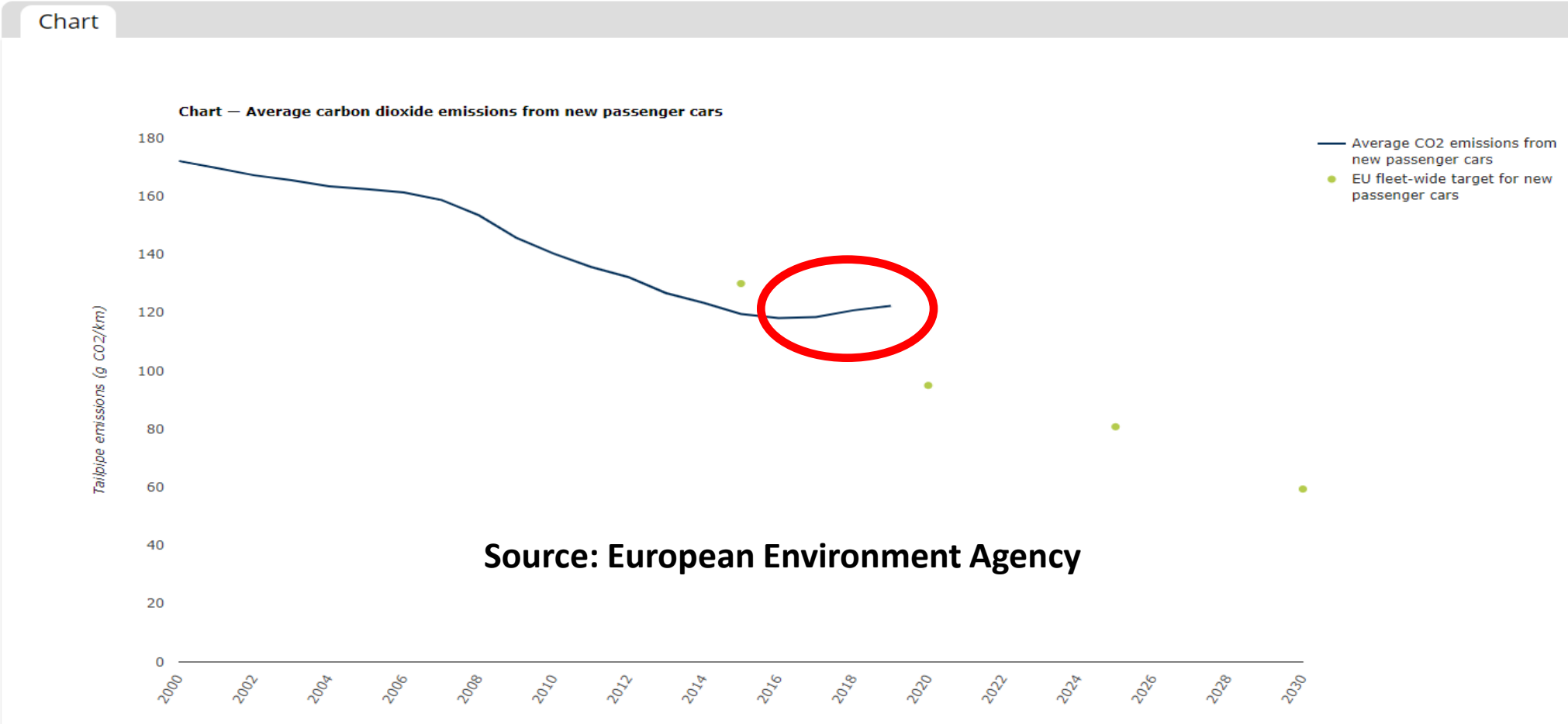


- European Commission approach of measuring % of Zero emission vehicles in new registrations a good approach. What else should we cover?

Regional Specific Indicators

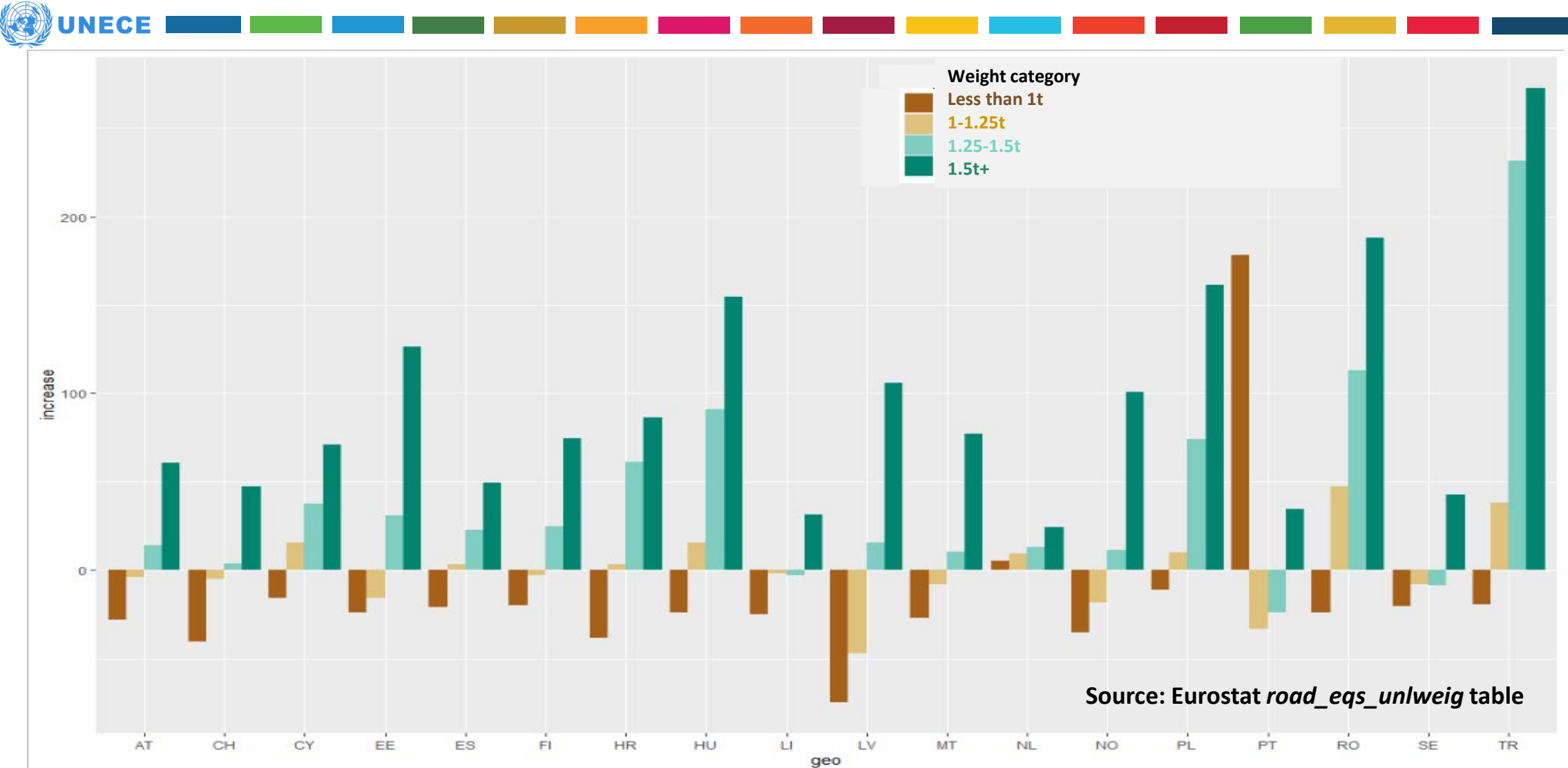


Fig. 1: Average carbon dioxide emissions from new passenger cars

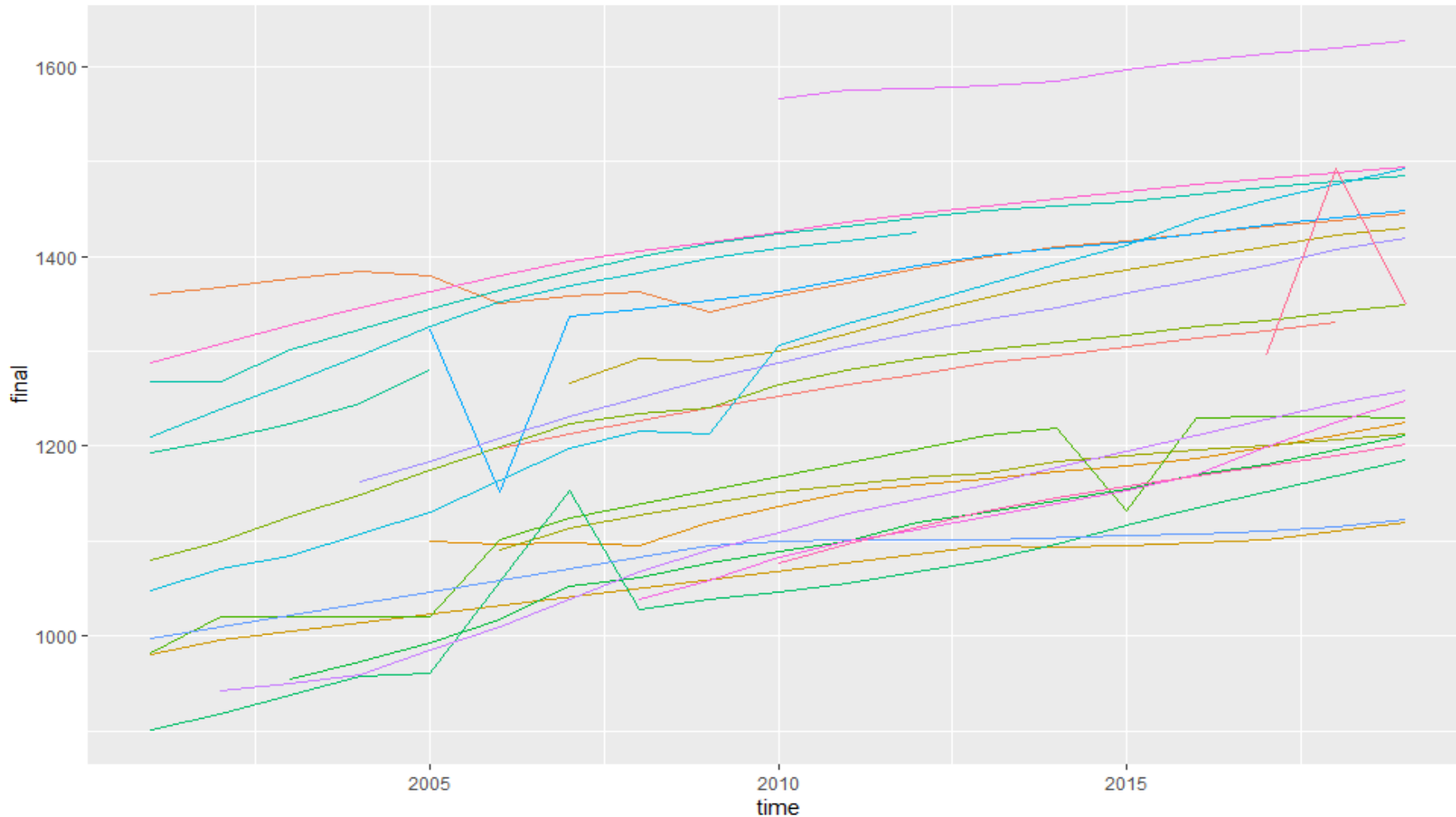


Regional Specific Indicators?: Vehicle weight

% Change in Stock of each Vehicle weight category by Country, 2010-2018



Regional Specific Indicators?: vehicle weight



Average weight for each country grew between 6% and 22% 2008-2018 (with assumptions.)

- geo
- AT
 - CH
 - CY
 - DK
 - EE
 - ES
 - FI
 - FR
 - HR
 - HU
 - IS
 - LI
 - LU
 - LV
 - MK
 - MT
 - NL
 - NO
 - PL
 - PT
 - RO
 - SE
 - TR
 - XK

Source: Eurostat *road_eqs_unlweig* table

Further indicators



- Walking and cycling?
- Transport access/poverty/affordability?
- Intermodal transport or freight decarbonisation?

- What does **your** country use to measure “sustainable transport”?



- If there is agreement on a set of “trial” indicators, with good data availability, then we can produce an informal publication on them as a discussion tool.
- This can help countries implement the SDGs at national level.