



Ministry of Infrastructure
and Water Management



Dutch approach to Zero Emission Zones for Freight

2 June 2021 – UN ECE Workshop
Zero Emission Zones and the potential role
of geofencing in commercial vehicles

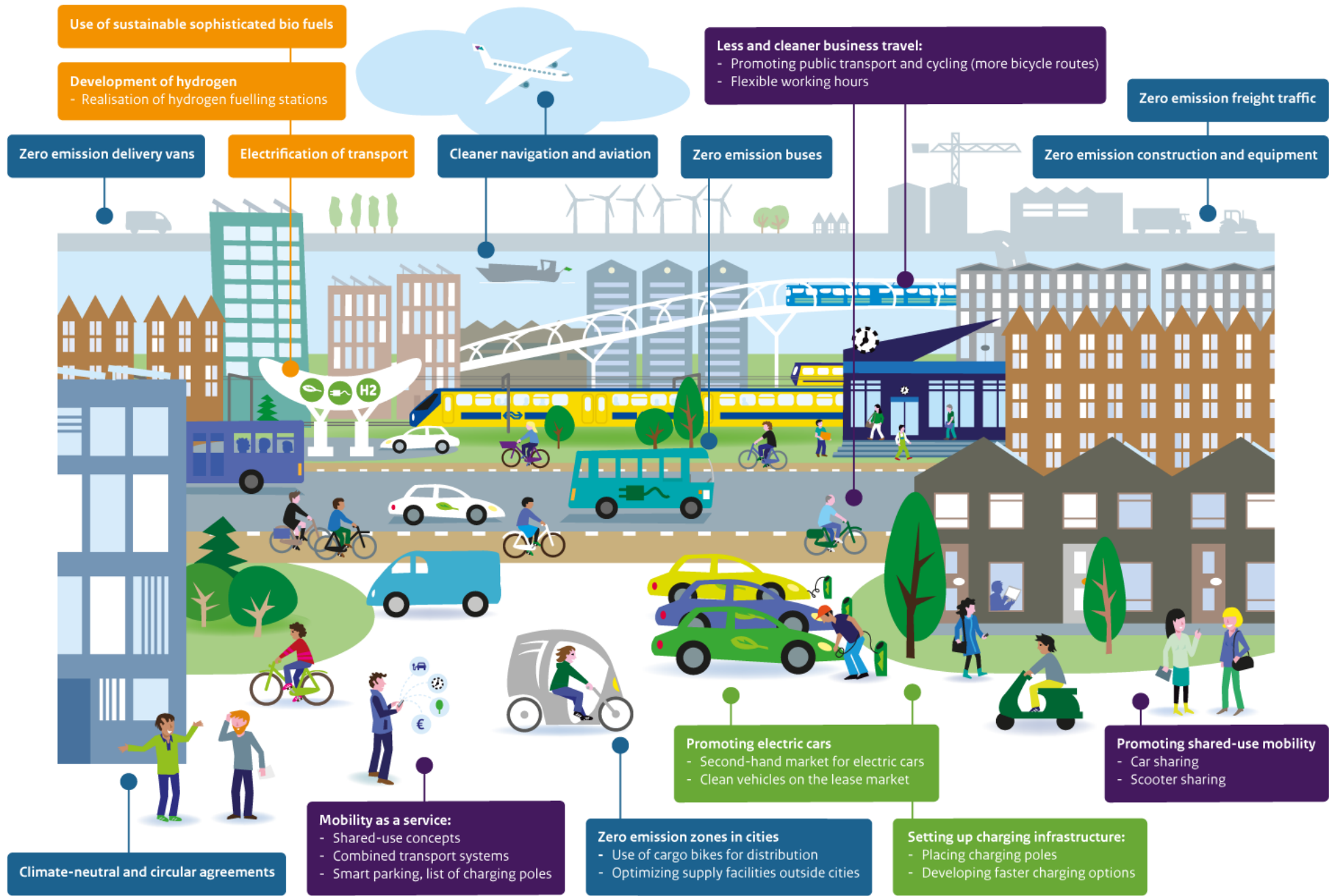
Rosemarie Cramer

Advisor International Sustainable Logistics

rosemarie.cramer@minienw.nl

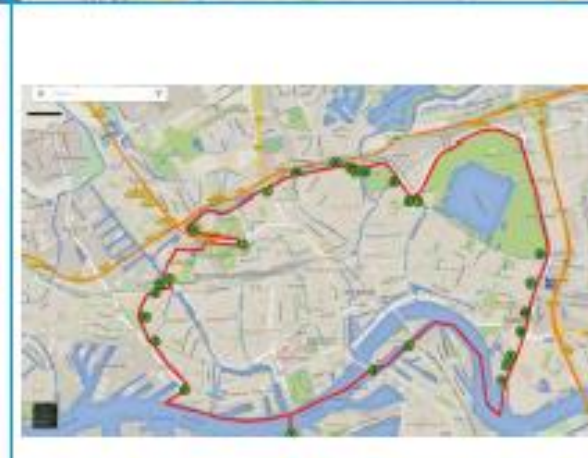
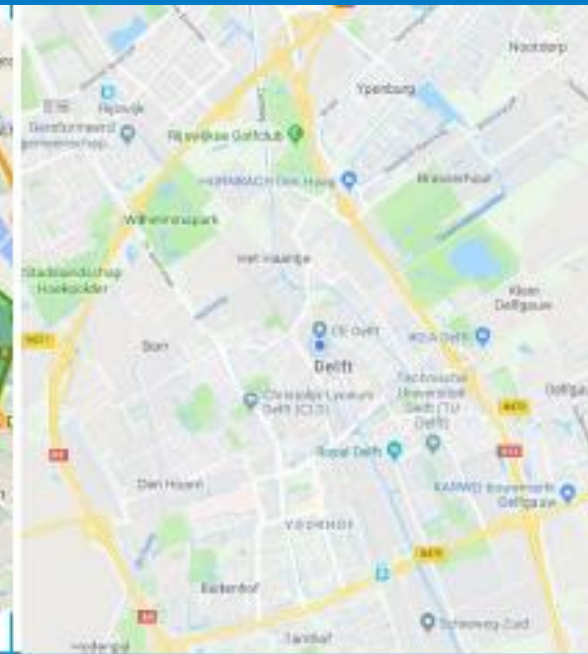
Ministry of Infrastructure and Water Management

National Climate Agreement





30 to 40 cities will implement a Zero Emission Zone





Approach

Logistics sector, national and local governments focus together on:

- a. **avoid** (more efficient urban freight logistics)
- b. **shift** (different logistics concepts)
- c. **improve** (zero emission vehicles)



Advantages of Zero Emission Zones



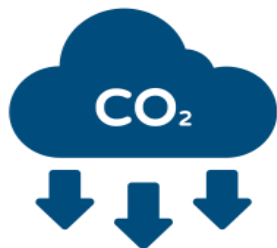
Improving air quality
& health



Improving
accessibility &
economic vitality



Improving liveability
& safety



Yearly reduction of
1.0 megaton CO₂
emissions in 2030



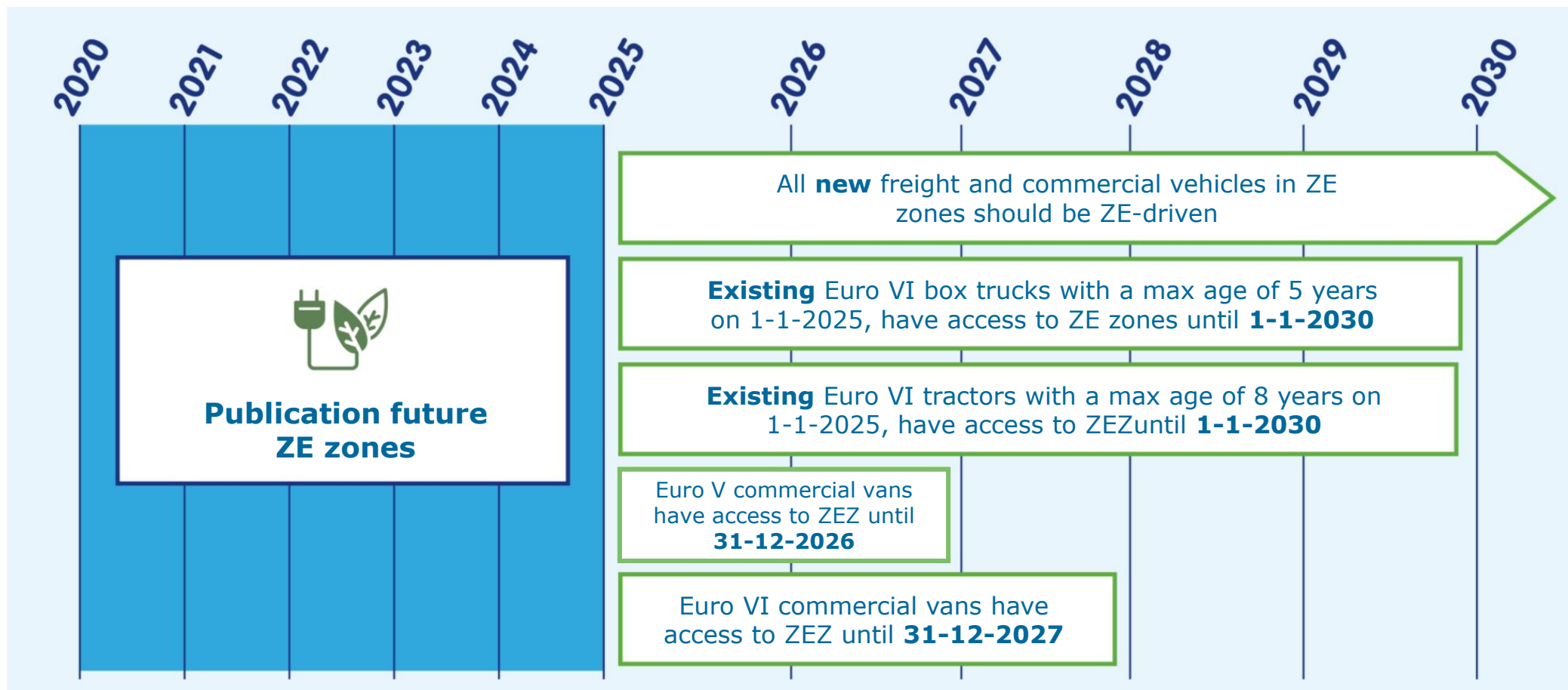
Instrument to promote
demand for ZE Freight
Vehicles



Contribution to long-
term goal of 100% ZE
transport in 2050



Transition period freight vehicles





Expected transition to zero emission city logistics by 2025

Rotterdam city centre

Segments	Subsegments	Most common type vehicles and propulsion 2019			Most common type vehicles and propulsion 2025		
Fresh	Retail (fresh)						
	Hospitality and specialists						
	Fresh home deliveries (groceries and prepared meals)						
General freight	Retail chains (non-fresh)						
	Specialists (including fashion, hanging garments)						
	Two-person home deliveries (furniture, white goods)						

Driveline type

- Fuel
- Electric
- Hydrogen electric
- Hybrid



Current challenges

1. Enforcement

2. International alignment



Automatic Number plate
Recognition



Hybrid vehicles



Geofencing

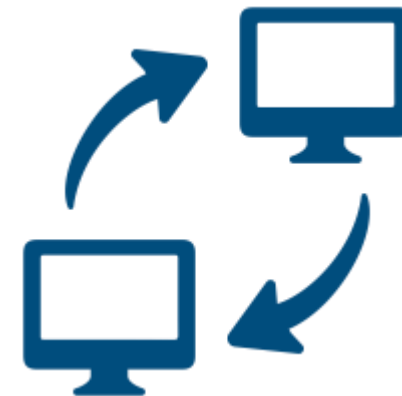


Current challenges

1. Enforcement
- 2. International alignment**



Standardization



Data sharing



Collaboration with OEM's



Support international
alignment



Vehicle availability



Thank you

rosemarie.cramer@minienw.nl