



Economic Commission for Europe**Inland Transport Committee****Working Party on Customs Questions affecting Transport****Group of Experts on Conceptual and
Technical Aspects of Computerization of the TIR Procedure****Second session**

Geneva, 25–28 May 2021

Item 6 (c) of the provisional agenda

**eTIR conceptual, functional and technical documentation version 4.3:
eTIR functional specifications****Data Analysis - Classes*****Note by the secretariat****I. Mandate**

1. The Inland Transport Committee during its eighty-second session (23–28 February 2020) approved (ECE/TRANS/294, para. 84¹) the establishment of the Group of Experts on Conceptual and Technical Aspects of Computerization of the TIR Procedure (WP.30/GE.1) and endorsed its Terms of Reference (ToR)² (ECE/TRANS/WP30/2019/9 and ECE/TRANS/WP.30/2019/9/Corr.1) pending approval by the United Nations Economic Commission for Europe (ECE) Executive Committee (EXCOM). EXCOM during its Remote informal meeting of members of the Executive Committee (20 May 2020) approved the establishment of the Group of Experts on Conceptual and Technical Aspects of Computerization of the TIR Procedure (WP.30/GE.1) until 2022, based on the ToR included in document ECE/TRANS/WP.30/2019/9 and Corr.1, as contained in document ECE/TRANS/294 (ECE/EX/2020/L.2, para. 5(b)).³

* The numbering of the chapters in this document is aligned with numbering of the chapters in former versions of the eTIR specifications (e.g. ECE/TRANS/WP.30/2011/4/Rev.1)

¹ Decision of the Inland Transport Committee para. 84 / ECE/TRANS/294
www.unece.org/fileadmin/DAM/trans/doc/2020/itc/ECE-TRANS-294e.pdf

² Terms of reference of the newly established Group approved by the Inland Transport Committee and the Executive Committee (EXCOM) of UNECE
www.unece.org/fileadmin/DAM/trans/bcf/wp30/documents/2019/ECE-TRANS-WP30-2019-09e.pdf
and corrigendum www.unece.org/fileadmin/DAM/trans/bcf/wp30/documents/2019/ECE-TRANS-WP30-2019-09c1e.pdf

³ Decision of EXCOM, ECE/EX/2020/L.2 / para. 5(b)
www.unece.org/fileadmin/DAM/commission/EXCOM/Agenda/2020/Remote_informal_mtg_20_05_2020/Item_4_ECE_EX_2020_L.2_ITC_Sub_bodies_E.pdf



2. The ToR of the Group stipulate that the Group should focus its work on preparing a new version of the eTIR specifications, pending the formal establishment of the Technical Implementation Body (TIB). More specifically the Group should (a) prepare a new version of the technical specifications of the eTIR procedure, and amendments thereto, ensuring their alignment with the functional specifications of the eTIR procedure; (b) prepare a new version of the functional specifications of the eTIR procedure, and amendments thereto, ensuring their alignment with the conceptual specifications of the eTIR procedure; (c) prepare amendments to the conceptual specifications of the eTIR procedure, upon requests by WP.30.

3. This document presents the data analysis and the message structures at the level of the classes. This document will be part of the eTIR functional specifications document.

2. Data Analysis

4. The class diagrams below are based on the class diagram presented in the eTIR Concepts document and are aligned to the WCO transit data model version 3.11⁴. Whereas the class diagrams in eTIR Concepts document only contained the class names and the relationships between classes, they now show the attributes and methods of each class. The methods allow for interactions between objects and/or actors as presented in the sequence diagrams in Chapter 1.1. The classes and attributes are used in chapter 2.5 and in the technical specification to describe electronic messages and, together with the relationships, serve to design database structures used in the eTIR international system.

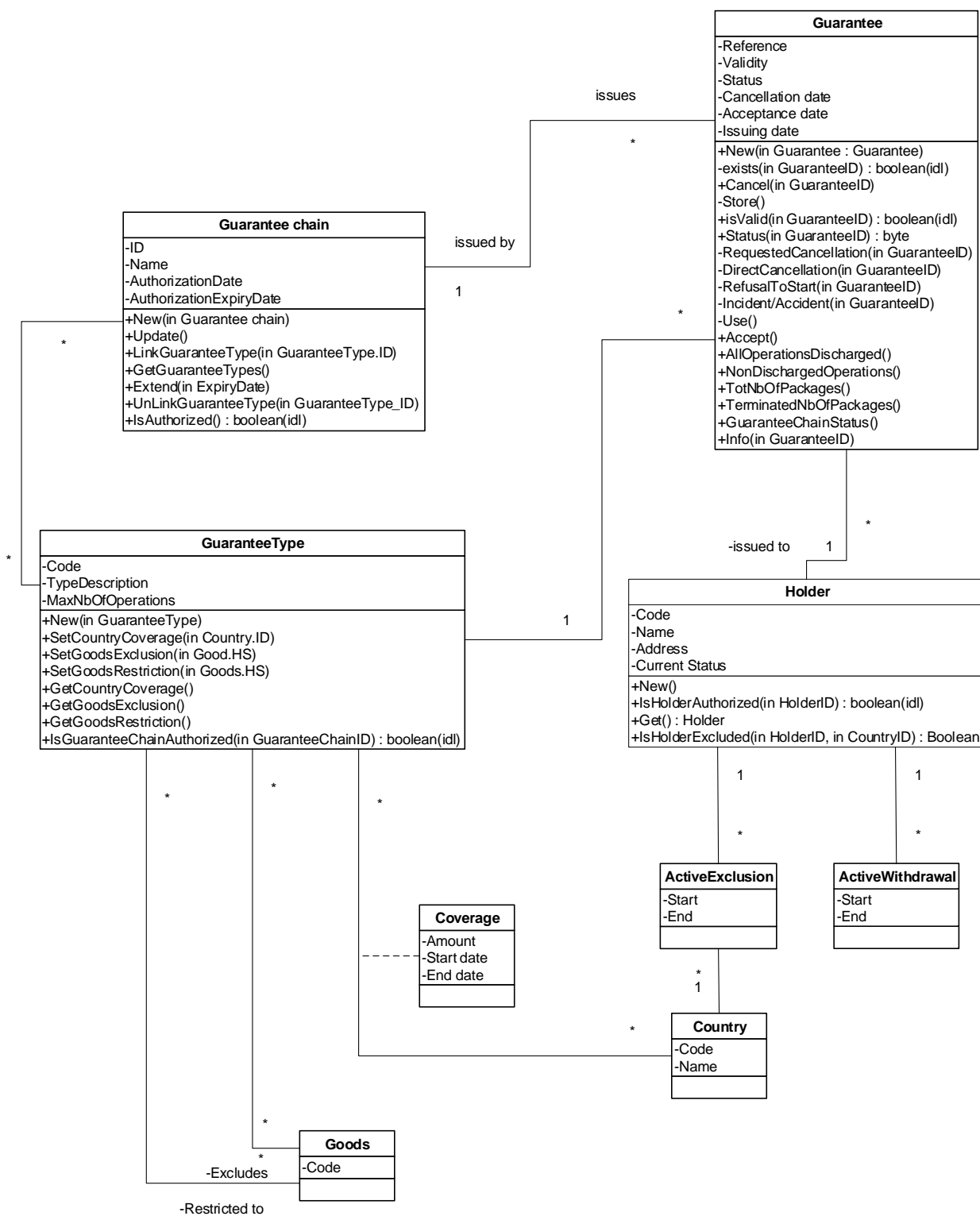
5. Three class diagrams are presented separately to facilitate the reading. As a consequence, the classes guarantee, goods, customs office, country, holder can be found in more than one diagram.

2.1 Management by customs of data on guarantees class diagram

6. The management by customs of data on guarantees class diagram presents the classes involved in providing guarantee-related information and the relationships between these classes.

⁴ eTIR extensions to WCO data model version 3.11 are presented in Annex IV.

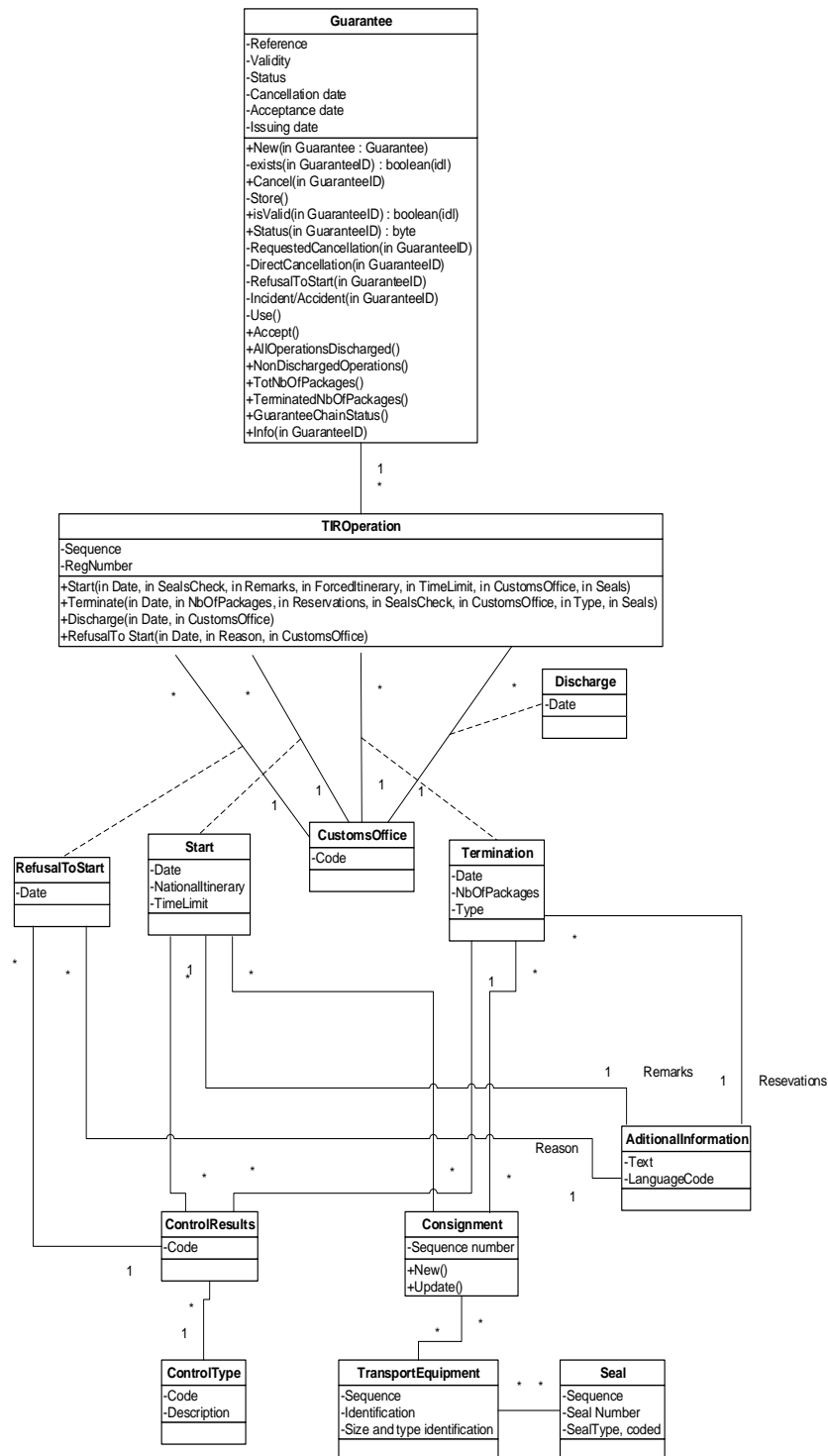
Figure 1.19:
Customs management of guarantees class diagram



OBJ

2.2 Declaration class diagram

7. The declaration class diagram presents the classes involved in the exchange of declaration-related information and the relationships between these classes.



2.4 Lists of electronic messages

2.4.1 External messages

9. External messages are used to exchange information between customs systems (including the eTIR international system) and other actors (guarantee chain and holder).

Table 1.1

External messages

No.	Description	Response to:
E1	Register guarantee	-

<i>No.</i>	<i>Description</i>	<i>Response to:</i>
	This message allows the Guarantee chain to register a guarantee in the eTIR international system.	
E2	Registration results This message is a response to message E1. It confirms the registration of the guarantee or provides error codes.	E1
E3	Cancel guarantee This message allows the Guarantee chain to cancel a guarantee it had previously registered in the eTIR international system.	-
E4	Cancellation results This message is a response to message E2. It confirms the cancellation of the guarantee or provides error codes.	E3
E5	Query guarantee This message allows the Guarantee chain to query the eTIR international system to obtain information on a guarantee it had previously registered.	-
E6	Query results This message is a response to message E5. It provides the information requested regarding the guarantee(s) or error codes.	E5
E7	Notify guarantee chain This message informs the Guarantee chain of the availability of new information concerning a guarantee it has issued.	-
E8	Notification confirmation This message is a response to message E7. It confirms the reception of the notification.	E7
E9	Advance TIR data This message allows the holder to provide customs authorities of departure with all information required to begin a TIR transport.	-
E10	Advance TIR data results This message is a response to message E9. It confirms the reception of the advance TIR data or indicates the errors in the advance TIR data.	E9
E11	Advance amendment data This message allows the holder to send a request to customs authorities to amend the declaration and complement it in case of multiple loading and unloading places.	-
E12	Advance amendment data results This message is a response to message E11. It confirms the reception of the advance amendment data or indicates the errors in the amendment request.	E11
E13	Cancel advance data This message allows the holder to send a request to customs authorities to cancel a previously sent E9 or E11 message.	-
E14	Cancel advance data results This message is a response to message E13. It confirms the	E13

<i>No.</i>	<i>Description</i>	<i>Response to:</i>
	reception of the request to cancel advance data or indicates the errors in the cancellation request.	

2.4.2 Internal messages

10. Internal messages refer to the messages exchanged within the customs international environment (between the eTIR international system and national customs system).

Table 1.2

Internal messages

<i>No.</i>	<i>Description</i>	<i>Response to:</i>
I1	Accept Guarantee This message allows customs authorities to indicate that they have accepted a guarantee.	-
I2	Acceptance results This message is a response to message I1. It confirms the acceptance of the guarantee.	I1
I3	Get holder information This message allows customs authorities or the eTIR international system to retrieve information about holders in the ITDB.	-
I4	Holder information This message is a response to message I3. It provides the information regarding the holder(s) or error codes.	I3
I5	Query guarantee This message allows customs authorities to query the eTIR international system to obtain information on a guarantee.	-
I6	Query results This message is a response to message I5. It provides the information requested regarding the guarantee(s) or error codes	I5
I7	Record declaration data This message allows customs authorities to record all information related an accepted declaration or amendments thereto.	-
I8	Record declaration data results This message is a response to message I7. It confirms the recording of the declaration data and returns national references of the countries along the itinerary that received the declaration data.	I7
I9	Start TIR operation This message allows customs authorities to record information related to the start of TIR operations.	-
I10	Start results This message is a response to message I9. It confirms the recording of the start of the TIR operation or error codes.	I9
I11	Terminate TIR operation	-

<i>No.</i>	<i>Description</i>	<i>Response to:</i>
	This message allows customs authorities to record information related to the terminations of TIR operations.	
I12	Termination results	I11
	This message is a response to message I11. It confirms the recording of the termination of the TIR operation or error codes.	
I13	Discharge TIR operation	-
	This message allows customs authorities to record information related to the discharge of TIR operations.	
I14	Discharge results	I13
	This message is a response to message I13. It confirms the recording of the discharge of the TIR operation or error codes.	
I15	Notify customs	-
	This message is used by the eTIR international system to send to customs authorities declaration data and relevant TIR operation data.	
I16	Notification confirmation	I15
	This message is a response to message I15. It confirms the reception of the notification and, when receiving declaration data, provides a national reference .	
I17	Refusal to start a TIR operation	-
	This message allows customs authorities to record information related to the refusal to start a TIR operation.	
I18	Refusal to start results	I17
	This message is a response to message I17. It confirms the reception of the refusal to start a TIR operation.	
I19	Check customs offices	-
	This message allows customs authorities or the eTIR international system to retrieve information about customs offices in the ITDB.	
I20	Customs offices validation	I19
	This message is a response to message I19. It provides the information regarding customs offices or error codes.	

2.5 Electronic messages data elements

2.5.1 Classes

2.5.1.1 Metadata

11. Internal and external messages are always sent along with metadata information.

Metadata		
└─	Communication Metadata	1 .. 1
└─┬─	Recipient	1 .. 1
└─┬─	Sender	1 .. 1

2.5.1.2 External messages

a. E1 – Register guarantee

Message		
Guarantee	1	.. 1
GuaranteeChain	1	.. 1
Holder	1	.. 1

b. E2 – Registration results

Message		
Error	0	.. unbounded
Pointer	1	.. unbounded

c. E3 – Cancel guarantee

Message		
Guarantee	1	.. 1
GuaranteeChain	1	.. 1
Holder	1	.. 1

d. E4 – Cancellation results

Message		
Error	0	.. unbounded
Pointer	1	.. unbounded

e. E5 – Query guarantee

Message		
Guarantee	1	.. 1

f. E6 – Query results

Message		
Error	0	.. unbounded
Pointer	1	.. unbounded
LPCO	1	.. 1
Guarantee	1	.. 1
DeclarationData	0	.. unbounded
AdditionalInformation	0	.. 1
Agent	0	.. 1
Amendment	0	.. unbounded
Pointer	1	.. 1
SubContractor	0	.. unbounded
Address	0	.. 1
Consignment	0	.. unbounded
AttachedDocuments	0	.. unbounded
BinaryFile	0	.. 1
ConsignmentItem	1	.. unbounded
AdditionalInformation	0	.. unbounded
Goods	1	.. 1
Classification	0	.. unbounded
Consignee	0	.. 1
Address	0	.. 1
Consignor	0	.. 1
Address	0	.. 1
DeliveryDestination	0	.. 1
Address	1	.. 1
GoodsMeasure	1	.. 1
Packaging	1	.. 1
TransportEquipment	0	.. 1
UCR	0	.. 1
LoadingLocation	0	.. 1

	NotifyParty	0 .. 1
	Address	0 .. 1
	CustomsOfficeOfDeparture	1 .. 1
	CustomsOfficeOfDestination	1 .. 1
	TransportMeans	1 .. unbounded
	CountryOfRouting	1 .. unbounded
	TransportEquipment	0 .. unbounded
	CertificateOfApproval	0 .. 1
	BinaryFile	0 .. 1
	Seal	0 .. unbounded
	Guarantee	1 .. 1
	NationalReference	0 .. unbounded
	Holder	0 .. 1
	Address	0 .. 1
	GuaranteeChain	1 .. 1
	TIROperation	0 .. unbounded
	Start	0 .. 1
	AdditionalInformation	0 .. 1
	Consignment	0 .. 1
	TransportEquipment	1 .. unbounded
	Seal	1 .. unbounded
	Control	1 .. 1
	ControlResult	1 .. 1
	NationalItinerary	0 .. unbounded
	NationalItineraryCustomsOffice	1 .. 1
	CustomsOffice	1 .. 1
	Termination	0 .. 1
	AdditionalInformation	0 .. 1
	Consignment	0 .. 1
	TransportEquipment	1 .. unbounded
	Seal	1 .. unbounded
	Control	1 .. 1
	ControlResult	1 .. 1
	CustomsOffice	1 .. 1
	Discharge	0 .. 1
	CustomsOffice	1 .. 1
	RefusalToStart	0 .. 1
	AdditionalInformation	1 .. 1
	Control	0 .. 1
	ControlResult	1 .. 1
	CustomsOffice	1 .. 1
	Holder	1 .. 1
	Address	1 .. 1
	Authorization	1 .. 1
	ActiveWithdrawal	0 .. 1
	ActiveExclusion	0 .. unbounded

g. E7 – Notify guarantee chain

Message	Guarantee	1 .. 1
---------	-----------	--------

h. E8 – Notification confirmation

Message	Error	0 .. unbounded
	Pointer	1 .. unbounded

i. E9 – Advance TIR data

Message	AdditionalInformation	1 .. 1
	Agent	0 .. 1
	Address	0 .. 1
	SubContractor	0 .. unbounded
	Address	0 .. 1
	Consignment	1 .. unbounded
	AttachedDocuments	0 .. unbounded
	BinaryFile	0 .. 1

ConsignmentItem	1 .. unbounded
AdditionalInformation	0 .. unbounded
Goods	1 .. 1
Classification	0 .. unbounded
Consignee	0 .. 1
Address	0 .. 1
Consignor	0 .. 1
Address	0 .. 1
DeliveryDestination	0 .. 1
Address	1 .. 1
GoodsMeasure	1 .. 1
Packaging	1 .. 1
TransportEquipment	0 .. 1
UCR	0 .. 1
LoadingLocation	0 .. 1
NotifyParty	0 .. 1
Address	0 .. 1
CustomsOfficeOfDeparture	1 .. 1
CustomsOfficeOfDestination	1 .. 1
TransportMeans	1 .. unbounded
CountryOfRouting	1 .. unbounded
TransportEquipment	0 .. unbounded
CertificateOfApproval	0 .. 1
BinaryFile	0 .. 1
Seal	0 .. unbounded
Guarantee	1 .. 1
Holder	1 .. 1
Address	0 .. 1

j. E10 – Advance TIR data results

Message	
AdvanceTIRData	1 .. 1
Error	0 .. unbounded
Pointer	1 .. unbounded

k. E11 – Advance amendment data

Message	
AdditionalInformation	1 .. 1
Agent	0 .. 1
Address	0 .. 1
Amendment	0 .. unbounded
Pointer	1 .. unbounded
SubContractor	0 .. unbounded
Address	0 .. 1
Consignment	1 .. unbounded
AttachedDocuments	0 .. unbounded
BinaryFile	0 .. 1
ConsignmentItem	1 .. unbounded
AdditionalInformation	0 .. unbounded
Goods	1 .. 1
Classification	0 .. unbounded
Consignee	0 .. 1
Address	0 .. 1
Consignor	0 .. 1
Address	0 .. 1
DeliveryDestination	0 .. 1
Address	1 .. 1
GoodsMeasure	1 .. 1
Packaging	1 .. 1
TransportEquipment	0 .. 1
UCR	0 .. 1
LoadingLocation	0 .. 1
NotifyParty	0 .. 1
Address	0 .. 1
CustomsOfficeOfDeparture	1 .. 1
CustomsOfficeOfDestination	1 .. 1
TransportMeans	1 .. unbounded

CountryOfRouting	1 .. unbounded
TransportEquipment	0 .. unbounded
CertificateOfApproval	0 .. 1
BinaryFile	0 .. 1
Seal	0 .. unbounded
Guarantee	1 .. 1
Holder	1 .. 1
Address	0 .. 1

1. E12 – Advance amendment data results

Message	
AdvanceAmendmentData	1 .. 1
Error	0 .. unbounded
Pointer	1 .. unbounded

m. E13 – Cancel advance data

Message

n. E14 – Cancel advance data results

Message	
AdvanceData	1 .. 1
Error	0 .. unbounded
Pointer	1 .. unbounded

2.5.1.3 Internal messages

a. I1 – Accept guarantee

Message	
Guarantee	1 .. 1
GuaranteeChain	1 .. 1
Holder	1 .. 1

b. I2 – Acceptance results

Message	
Error	0 .. unbounded
Pointer	1 .. unbounded
Guarantee	1 .. 1

c. I3 – Get Holder information

Message	
Holder	1 .. 1

d. I4 – Holder information

Message	
Error	0 .. unbounded
Pointer	1 .. unbounded
Holder	1 .. 1
Address	1 .. 1
Authorization	1 .. 1
ActiveWithdrawal	0 .. 1
ActiveExclusion	0 .. unbounded

e. I5 – Query guarantee

Message	
Guarantee	1 .. 1

f. I6 – Query results

Message	
Error	0 .. unbounded
Pointer	1 .. unbounded

Guarantee	1 .. 1
DeclarationData	0 .. unbounded
AdditionalInformation	0 .. 1
Agent	0 .. 1
Amendment	0 .. unbounded
Pointer	1 .. 1
SubContractor	0 .. unbounded
Address	0 .. 1
Consignment	0 .. unbounded
AttachedDocuments	0 .. unbounded
BinaryFile	0 .. 1
ConsignmentItem	1 .. unbounded
AdditionalInformation	0 .. unbounded
Goods	1 .. 1
Classification	0 .. unbounded
Consignee	0 .. 1
Address	0 .. 1
Consignor	0 .. 1
Address	0 .. 1
DeliveryDestination	0 .. 1
Address	1 .. 1
GoodsMeasure	1 .. 1
Packaging	1 .. 1
TransportEquipment	0 .. 1
UCR	0 .. 1
LoadingLocation	0 .. 1
NotifyParty	0 .. 1
Address	0 .. 1
CustomsOfficeOfDeparture	1 .. 1
CustomsOfficeOfDestination	1 .. 1
TransportMeans	1 .. unbounded
CountryOfRouting	1 .. unbounded
TransportEquipment	0 .. unbounded
CertificateOfApproval	0 .. 1
BinaryFile	0 .. 1
Seal	0 .. unbounded
Guarantee	1 .. 1
NationalReference	0 .. unbounded
Holder	0 .. 1
Address	0 .. 1
GuaranteeChain	1 .. 1
TIROperation	0 .. unbounded
Start	0 .. 1
AdditionalInformation	0 .. 1
Consignment	0 .. 1
TransportEquipment	1 .. unbounded
Seal	1 .. unbounded
Control	1 .. 1
ControlResult	1 .. 1
NationalItinerary	0 .. unbounded
NationalItineraryCustomsOffice	1 .. 1
CustomsOffice	1 .. 1
Termination	0 .. 1
AdditionalInformation	0 .. 1
Consignment	0 .. 1
TransportEquipment	1 .. unbounded
Seal	1 .. unbounded
Control	1 .. 1
ControlResult	1 .. 1
CustomsOffice	1 .. 1
Discharge	0 .. 1
CustomsOffice	1 .. 1
RefusalToStart	0 .. 1
AdditionalInformation	1 .. 1
Control	0 .. 1
ControlResult	1 .. 1
CustomsOffice	1 .. 1
Holder	1 .. 1
Address	1 .. 1

Authorization	1 .. 1
ActiveWithdrawal	0 .. 1
ActiveExclusion	0 .. unbounded

g. I7 – Record declaration data

Message	
DeclarationData	1 .. 1
AdditionalInformation	0 .. 1
Agent	0 .. 1
Amendment	0 .. unbounded
Pointer	1 .. 1
SubContractor	0 .. unbounded
Address	0 .. 1
Consignment	0 .. unbounded
AttachedDocuments	0 .. unbounded
BinaryFile	0 .. 1
ConsignmentItem	1 .. unbounded
AdditionalInformation	0 .. unbounded
Goods	1 .. 1
Classification	0 .. unbounded
Consignee	0 .. 1
Address	0 .. 1
Consignor	0 .. 1
Address	0 .. 1
DeliveryDestination	0 .. 1
Address	1 .. 1
GoodsMeasure	1 .. 1
Packaging	1 .. 1
TransportEquipment	0 .. 1
UCR	0 .. 1
LoadingLocation	0 .. 1
NotifyParty	0 .. 1
Address	0 .. 1
CustomsOfficeOfDeparture	1 .. 1
CustomsOfficeOfDestination	1 .. 1
TransportMeans	1 .. unbounded
CountryOfRouting	1 .. unbounded
TransportEquipment	0 .. unbounded
CertificateOfApproval	0 .. 1
BinaryFile	0 .. 1
Seal	0 .. unbounded
Guarantee	1 .. 1
Holder	0 .. 1
Address	0 .. 1

h. I8 – Record declaration data results

Message	
DeclarationData	1 .. 1
NationalReference	0 .. unbounded
Error	0 .. unbounded
Pointer	1 .. unbounded

i. I9 – Start TIR operation

Message	
Guarantee	1 .. 1
TIROperation	1 .. 1
Start	1 .. 1
AdditionalInformation	0 .. 1
Consignment	0 .. 1
TransportEquipment	1 .. unbounded
Seal	1 .. unbounded
Control	1 .. 1
ControlResult	1 .. 1
NationalItinerary	0 .. 1
NationalItineraryCustomsOffice	1 .. 1
CustomsOffice	1 .. 1

j. I10 – Start results

Message		
Error		0 .. unbounded
Pointer		1 .. unbounded
Guarantee		1 .. 1
TIROperation		1 .. 1
Start		1 .. 1
Holder		1 .. 1
Authorization		1 .. 1
ActiveWithdrawal		0 .. 1
ActiveExclusion		0 .. unbounded

k. I11 – Terminate TIR operation

Message		
Guarantee		1 .. 1
TIROperation		1 .. 1
Termination		1 .. 1
AdditionalInformation		0 .. 1
Consignment		0 .. 1
TransportEquipment		1 .. unbounded
Seal		1 .. unbounded
Control		1 .. 1
ControlResult		1 .. 1
CustomsOffice		1 .. 1

l. I12 – Termination results

Message		
Error		0 .. unbounded
Pointer		1 .. unbounded
Guarantee		1 .. 1
TIROperation		1 .. 1
Termination		1 .. 1
Holder		1 .. 1
Authorization		1 .. 1
ActiveWithdrawal		0 .. 1
ActiveExclusion		0 .. unbounded

m. I13 – Discharge TIR operation

Message		
Guarantee		1 .. 1
TIROperation		1 .. 1
Discharge		1 .. 1
CustomsOffice		1 .. 1

n. I14 – Discharge results

Message		
Error		0 .. unbounded
Pointer		1 .. unbounded
Guarantee		1 .. 1
TIROperation		1 .. 1
Discharge		1 .. 1

o. I15 – Notify customs

Message		
DeclarationData		1 .. 1
AdditionalInformation		0 .. 1
Agent		0 .. 1
Amendment		0 .. unbounded
Pointer		1 .. 1
SubContractor		0 .. unbounded
Address		0 .. 1
Consignment		0 .. unbounded

AttachedDocuments	0 .. unbounded
BinaryFile	0 .. 1
ConsignmentItem	1 .. unbounded
AdditionalInformation	0 .. unbounded
Goods	1 .. 1
Classification	0 .. unbounded
Consignee	0 .. 1
Address	0 .. 1
Consignor	0 .. 1
Address	0 .. 1
DeliveryDestination	0 .. 1
Address	1 .. 1
GoodsMeasure	1 .. 1
Packaging	1 .. 1
TransportEquipment	0 .. 1
UCR	0 .. 1
LoadingLocation	0 .. 1
NotifyParty	0 .. 1
Address	0 .. 1
CustomsOfficeOfDeparture	1 .. 1
CustomsOfficeOfDestination	1 .. 1
TransportMeans	1 .. unbounded
CountryOfRouting	1 .. unbounded
TransportEquipment	0 .. unbounded
CertificateOfApproval	0 .. 1
BinaryFile	0 .. 1
Seal	0 .. unbounded
Guarantee	1 .. 1
Holder	0 .. 1
Address	0 .. 1
Guarantee	1 .. 1
TIROperation	0 .. unbounded
Start	0 .. 1
AdditionalInformation	0 .. 1
Consignment	0 .. 1
TransportEquipment	1 .. unbounded
Seal	1 .. unbounded
Control	1 .. 1
ControlResult	1 .. 1
NationalItinerary	0 .. 1
NationalItineraryCustomsOffice	1 .. 1
CustomsOffice	1 .. 1
Termination	0 .. 1
AdditionalInformation	0 .. 1
Consignment	0 .. 1
TransportEquipment	1 .. unbounded
Seal	1 .. unbounded
Control	1 .. 1
ControlResult	1 .. 1
CustomsOffice	1 .. 1
Discharge	0 .. 1
CustomsOffice	1 .. 1
RefusalToStart	0 .. 1
AdditionalInformation	1 .. 1
Control	0 .. 1
ControlResult	1 .. 1
CustomsOffice	1 .. 1

p. I16 – Notification confirmation

Message	
DeclarationData	1 .. 1
NationalReference	1 .. 1
Error	0 .. unbounded
Pointer	1 .. unbounded

q. I17 – Refusal to start TIR operation

Message

Guarantee	1 .. 1
TIROperation	1 .. 1
RefusalToStart	1 .. 1
AdditionalInformation	1 .. 1
Control	0 .. 1
ControlResult	1 .. 1
CustomsOffice	1 .. 1

r. I18 – Refusal to start results

Message	
Error	0 .. unbounded
Pointer	1 .. unbounded
Guarantee	1 .. 1

s. I19 – Check customs offices

Message	
CustomsOffice	1 .. unbounded

t. I20 – Customs offices validation

Message	
Error	0 .. unbounded
Pointer	1 .. unbounded
CustomsOffice	0 .. unbounded
Role	0 .. unbounded