



**UN/CEFACT**

## Implementation Guideline SPS e-CERT

Purpose: servicing SPS e-Certification for

- Animals and Animal Products
- Food
- Plant and Plant Products

## Planning for the Guide:

Comment on Draft:	until	2021-05-31
Draft Development Completion:		2021-06-30
Publication Date:		2021-09-30

# UN/CEFACT E-CERT servicing/connecting with:

- Codex Alimentarius
- E-Phyto HUB (IPPC)
- OIE

codex alimentarius commission



FOOD AND AGRICULTURE  
ORGANIZATION  
OF THE UNITED NATIONS

WORLD  
HEALTH  
ORGANIZATION



JOINT OFFICE: Viale delle Terme di Caracalla 00100 ROME Tel: 39 06 57051 www.codexalimentarius.net Email: codex@fao.org Fax: 39 06 5705 4593



International  
Plant Protection  
Convention



**WORLD ORGANISATION  
FOR ANIMAL HEALTH**

# UN/CEFACT E-CERT : Exchange

SPS certificates can be exchanged in the following way:

- *Bilateral Government-to-Government*: e-CERT SPS-Certificates are exchanged directly from competent authorities to competent authorities via their electronic SPS certificate management systems or National Single Windows.
- *Single Hub Model*: This model is available for phytosanitary certificates in the context of the ePhyto exchange HUB.

# Main Stakeholders

- Ministry of Agriculture/Ministry of Trade for the SPS agreements
- Competent Authorities for exchanging the Certificates
- Exporters
- Importers
- Border Control Authorities

# UN/CEFACT E-CERT : Proces-steps



# UN/CEFACT E-CERT : The Structure



The structure of an electronic SPS certificate has been published by UN/CEFACT as a global international standard under the name : e-CERT.



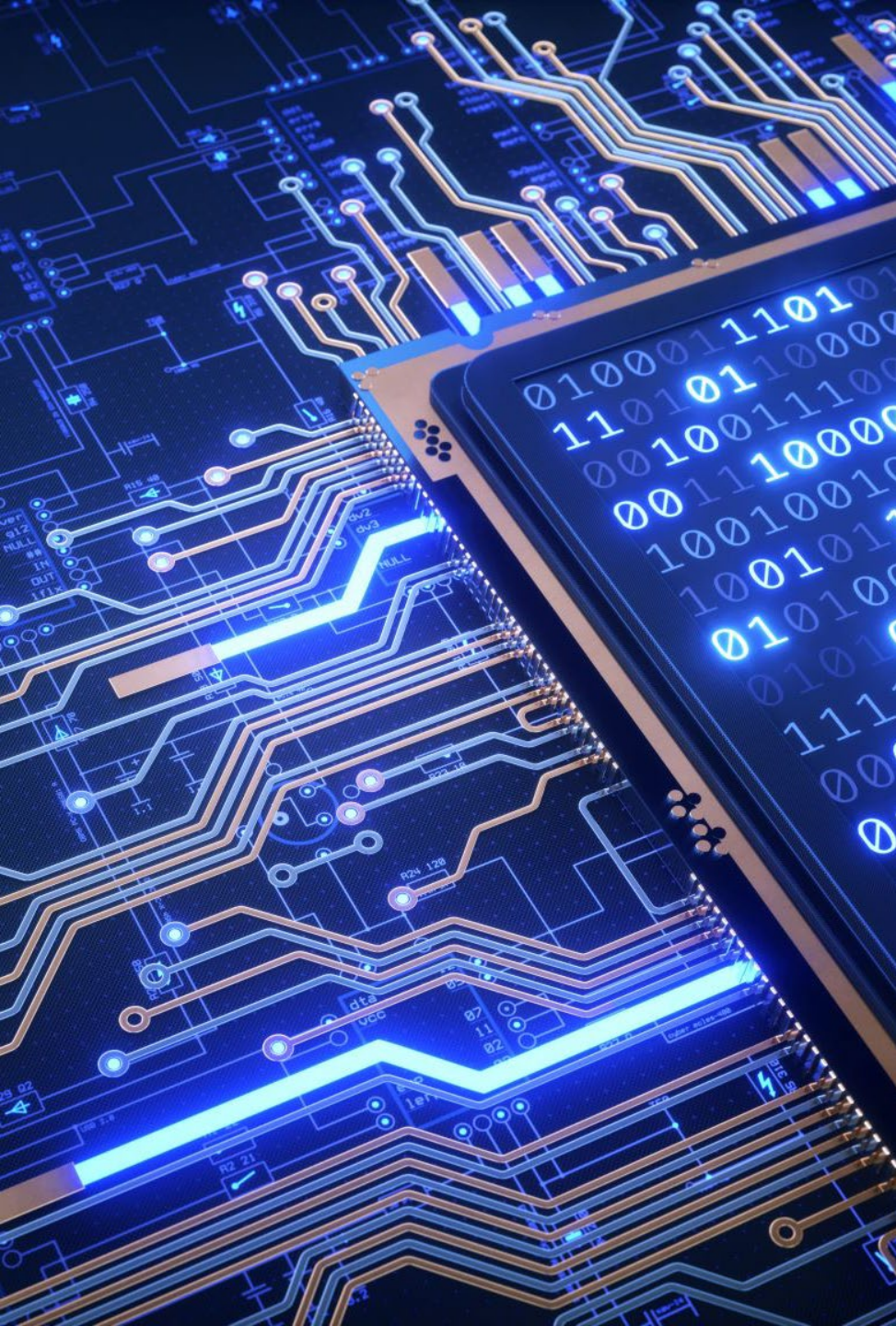
The standard includes:

A Business Requirement Specification (BRS) or Business Process Model, which explains the business processes that are supported by the e-CERT standard;

A Requirement Specification Mapping (RSM), which is a data model of the message and explains the data fields used in the message;

A set of XML Schemas, which specify the structure of the messages for electronic exchange of the certificates.





# UN/CEFACT E-CERT : XML-Schemas

---

- A UN/CEFACT standard Message is an electronic Message that meets the requirements set by UN/CEFACT, which is made up of UNCEFACT core components and is composed on the basis of an XSD published by UN/CEFACT.
- An Overview and Offer of the available UNCEFACT XML schemas is presented on the UN/CEFACT site:
- [http://www.unece.org/cefact/xml\\_schemas/index.html](http://www.unece.org/cefact/xml_schemas/index.html).
- XML is the acronym for eXtensible Markup Language.

# WSDL / Message Guide

The WSDL/Message Guide consists of a set of (web) services enabling Recipient Authorities to:

- Find certificates issued by the Issuing Authority
- Get (Download) certificates from the Issuing Authority
- Report the status of a downloaded certificate to the Issuing Authority
- Show the status of a certificate in the repository of the Issuing Authority
- Detect if the network and services at the Issuing are available (Heart beat)

WSDL : Web Service Definition Language (OASIS-standard)



# Mastering System

- The National Export Certification System NECS and the National Import Certification System (NICS) need to exchange information. In most cases this information needs to be transported over a public network like Internet. In order to prevent for
  - Unauthorised access;
  - Unauthorised changes;
  - Faking to be the NECS;
- This exchange needs to be secured with an encryption protocol, including a identification and authentication of both the importing and exporting Competent Authority.

## Using the e-Phyto HUB (via National System or GENS)

The HUB web service schema is composed by a large number of entities, some of them are part of the ePhyto definition, they are described more in details in the web service operation. See below the list of the main elements:

1) Envelope Header 2) Envelope Content 3) ePhyto Envelope

The WSDL has several operations; mainly supported by the following entities:

- a. Envelope Header
- b. Envelope = header + content
- c. ePhytoEnvelope = header + SPSCertificate
- d. Array of Envelope Header
- e. Array of Envelope
- f. HUBTrackingInfo
- g. NPPO
- h. ValidationResult

More information can be found in HUB Web Service API IPPC ePhyto HUB : [https://www.ephytoexchange.org/doc/HUB\\_Web\\_Service\\_API.pdf](https://www.ephytoexchange.org/doc/HUB_Web_Service_API.pdf)  
More information about GENS (IPPC Generic ePhyto National System): <https://www.ephytoexchange.org/landing/gens/index.html>

# Countries using e-Certification

(March 2021)

Country/ Organisation	Countries Sending TO (Phyto Sanitary)	Counties Receiving FROM (Phyto Sanitary)	Countries Sending TO (Sanitary)	Countries Receiving FROM (Sanitary)	Using ePhyto HUB
Argentina	Yes	Yes	No	No	Yes
Australia	Yes	Yes	Yes	Yes	Yes
Brazil	Yes	Yes	No	No	Yes
Canada	No	No	No	Yes	Testing
Chile	Yes	Yes	Yes	No	Yes
Costa Rica	Yes	Yes	No	Yes	Yes
European Union	Yes	Yes	No	Yes	Yes
Japan	No	No	No	Yes	No
Korea	Yes	Yes	No	Yes	Yes
Mexico	Yes	Yes	No	No	Yes
Netherlands	Yes	Yes	Yes	Yes	Yes
New Zealand	Yes	Yes	Yes	Yes	Yes
United States	Yes	Yes	Yes	Yes	Yes

SOURCE: Paper DIGITAL OPPORTUNITIES FOR SANITARY AND PHYTOSANITARY (SPS) SYSTEMS

[https://www.oecd-ilibrary.org/agriculture-and-food/digital-opportunities-for-sanitary-and-phytosanitary-sps-systems-and-the-trade-facilitation-effects-of-sps-electronic-certification\\_cbb7d0f6-en](https://www.oecd-ilibrary.org/agriculture-and-food/digital-opportunities-for-sanitary-and-phytosanitary-sps-systems-and-the-trade-facilitation-effects-of-sps-electronic-certification_cbb7d0f6-en)



# Comment on the DRAFT:

- Before 2021-05-31
- On UN/CEFACT Project Page
- Thank you for your attention!
  - [j.p.aalbers@nvwa.nl](mailto:j.p.aalbers@nvwa.nl)
  - [e.bosker@minlnv.nl](mailto:e.bosker@minlnv.nl)