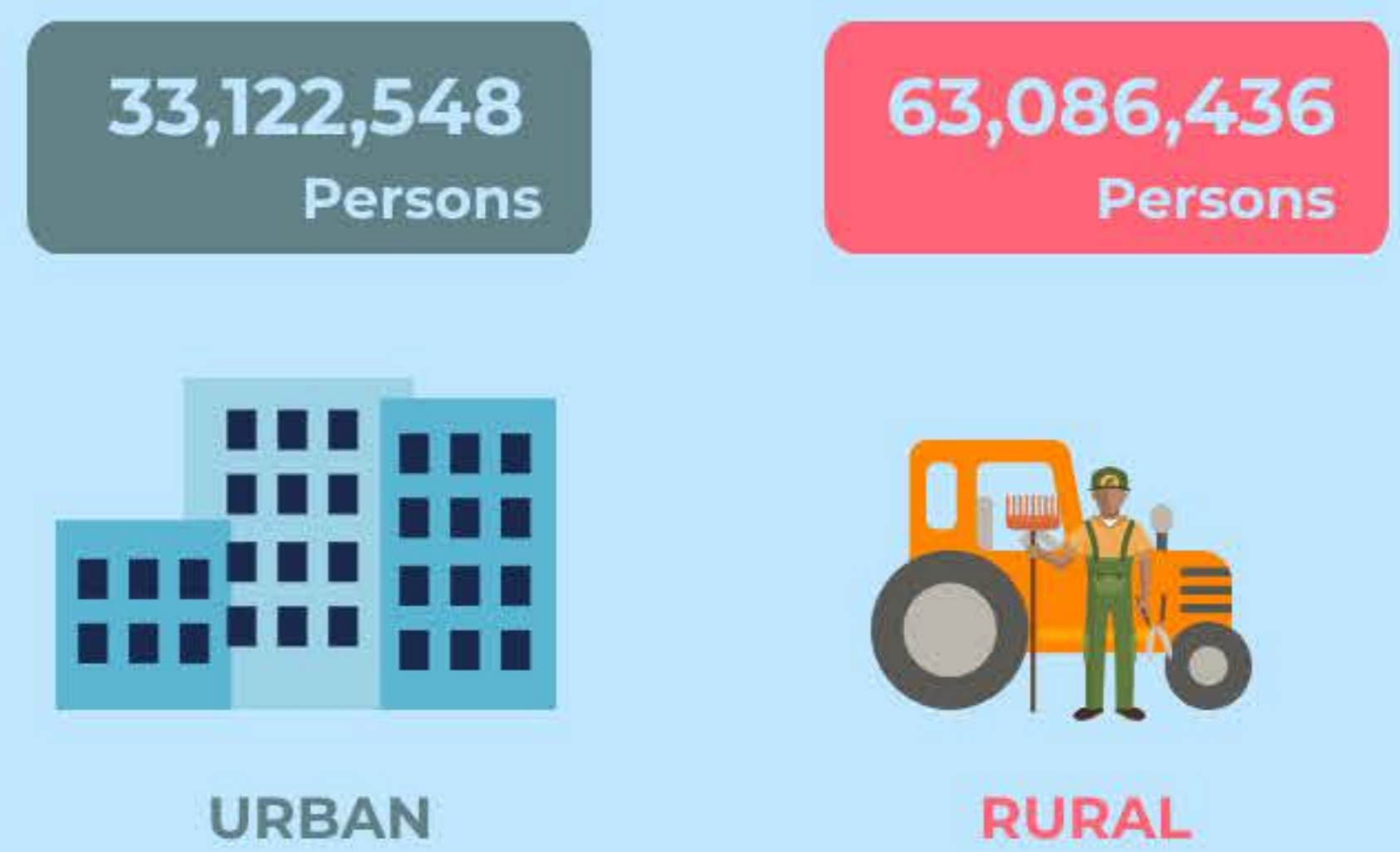
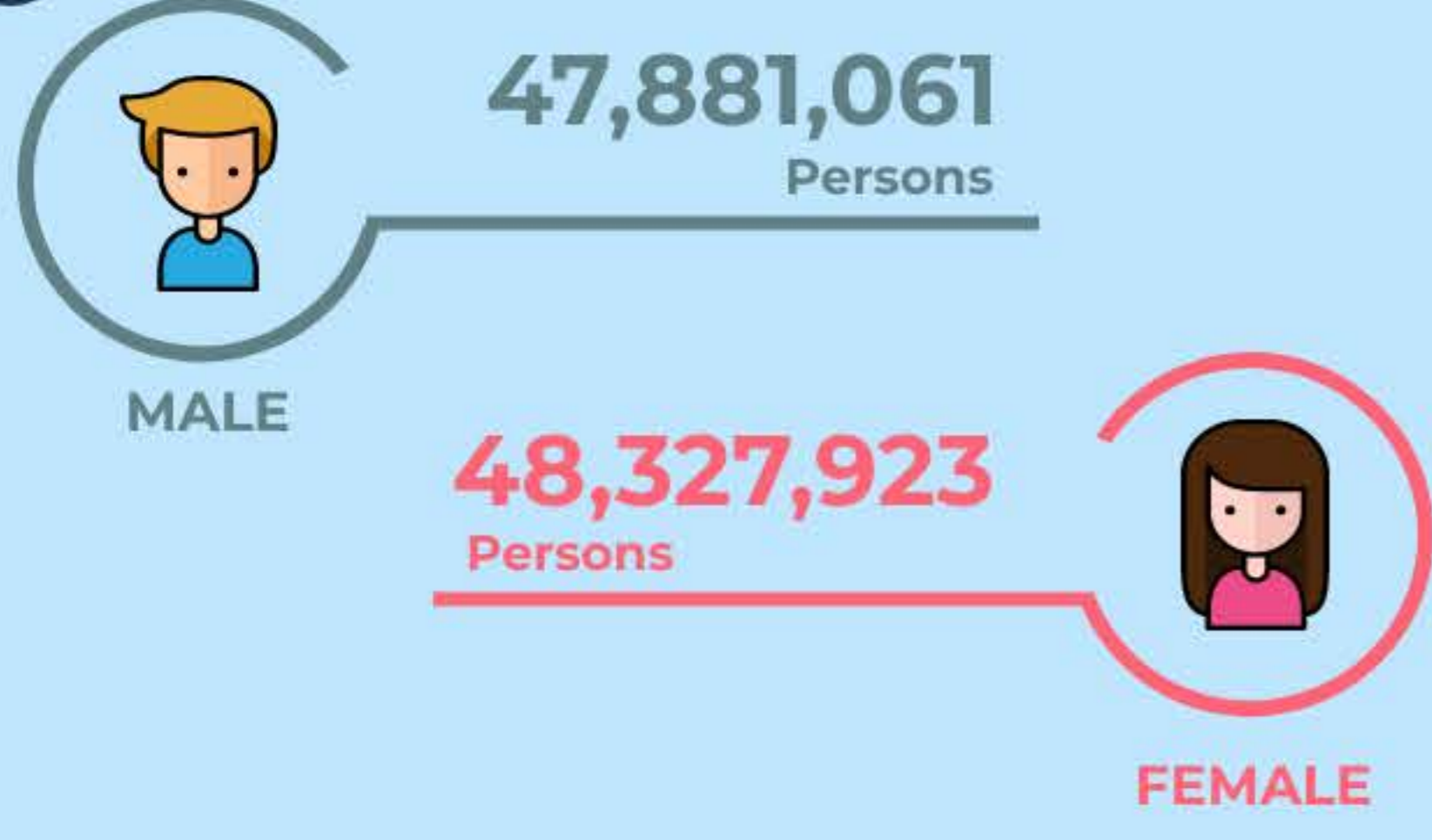


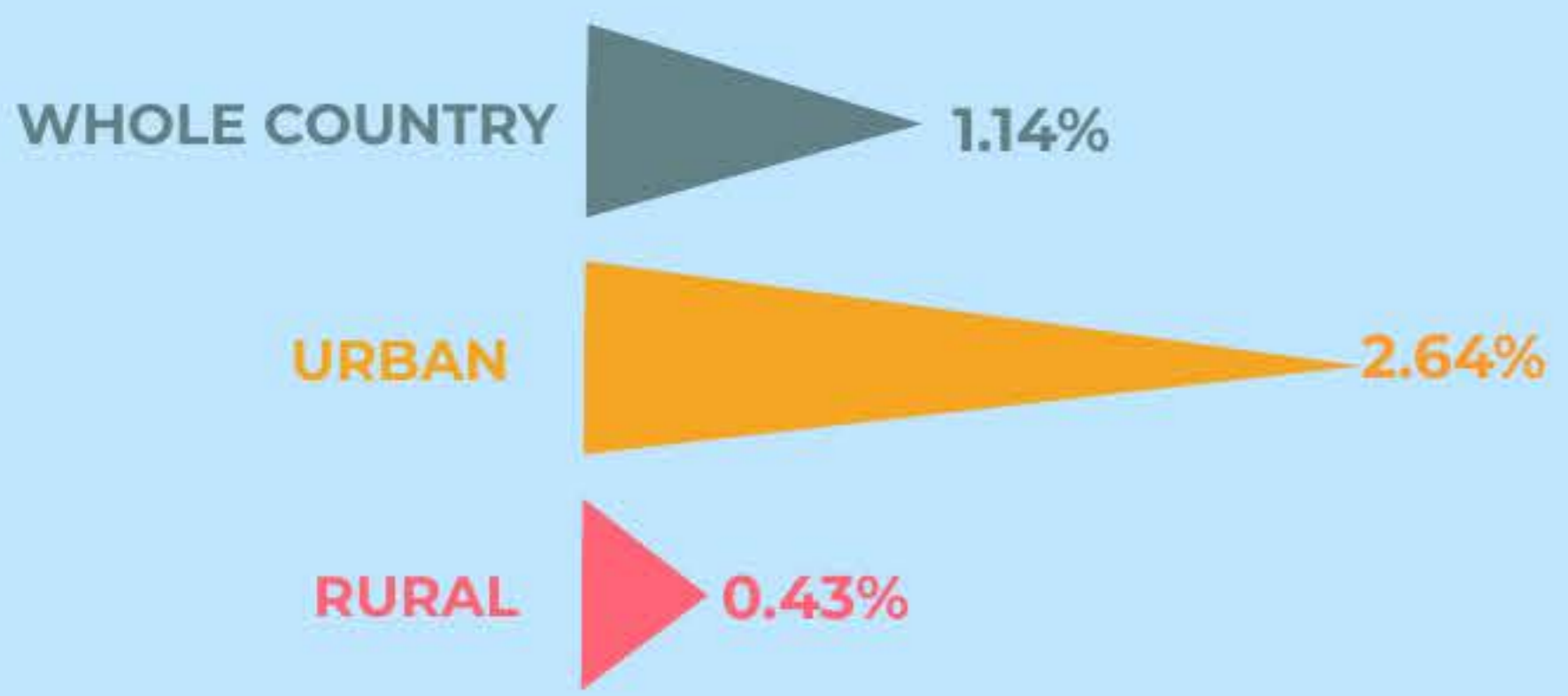
96,208,984 persons

Viet Nam population at 00.00 hours of 1 April 2019

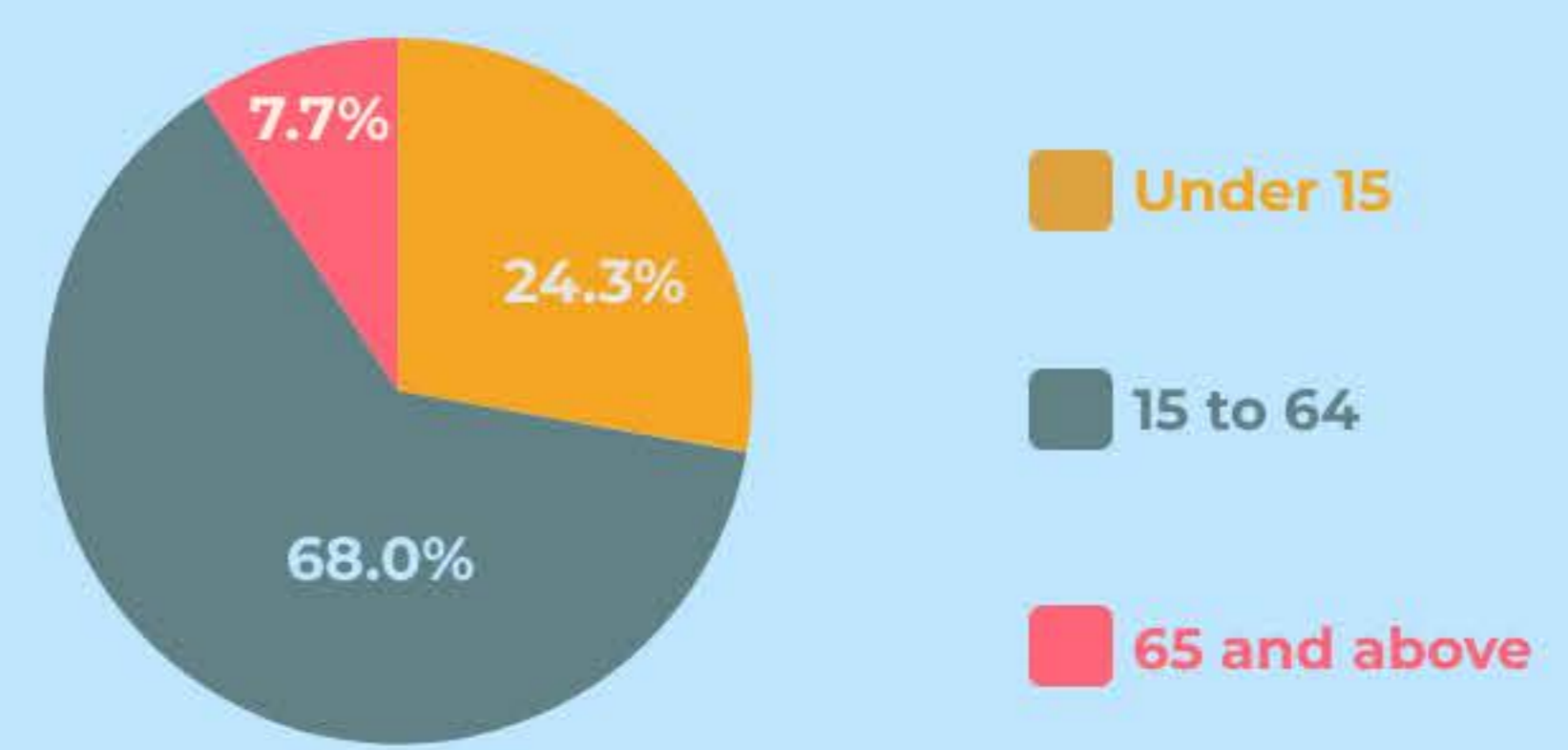
1 POPULATION SIZE



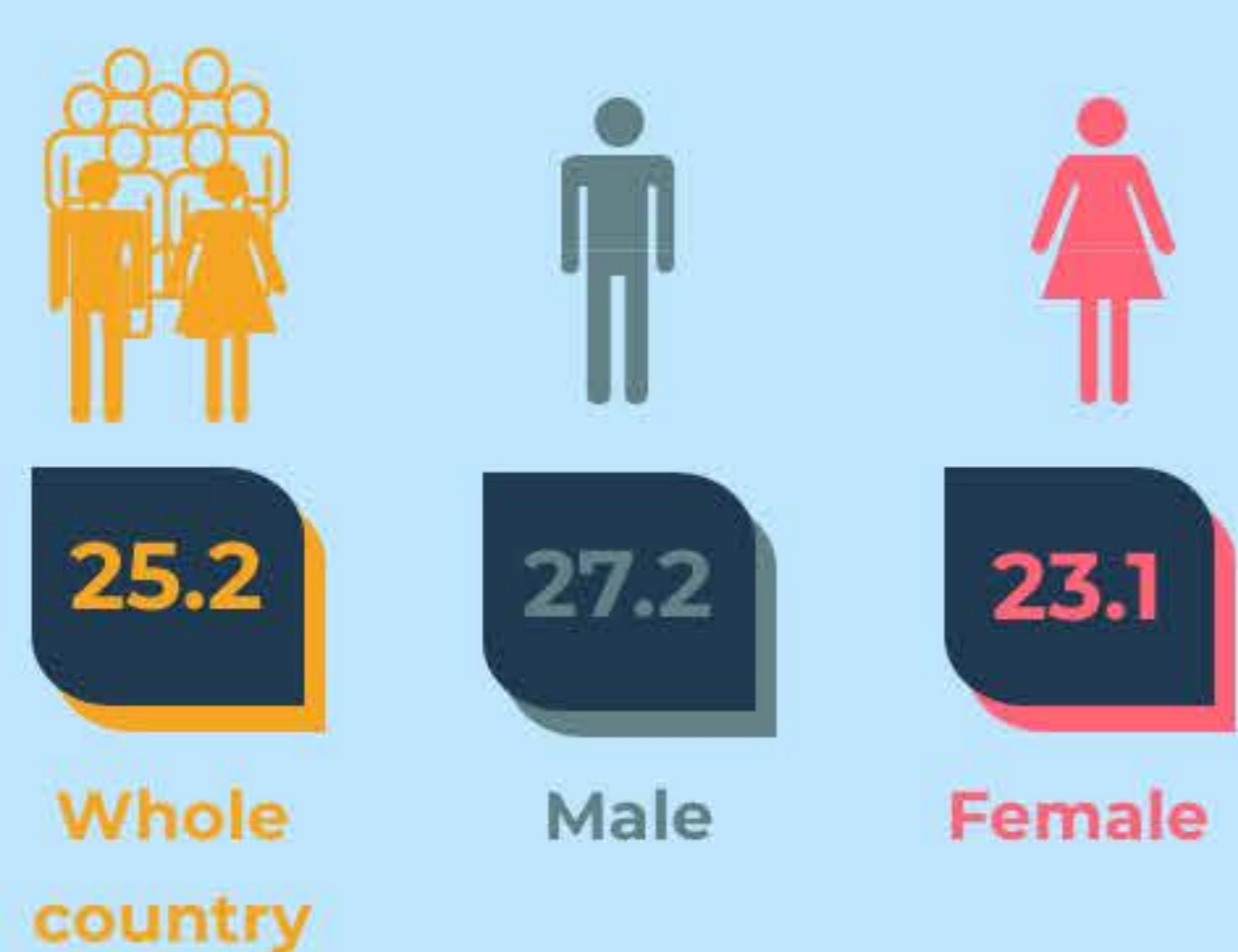
2 AVERAGE ANNUAL POPULATION GROWTH RATE 2009 - 2019



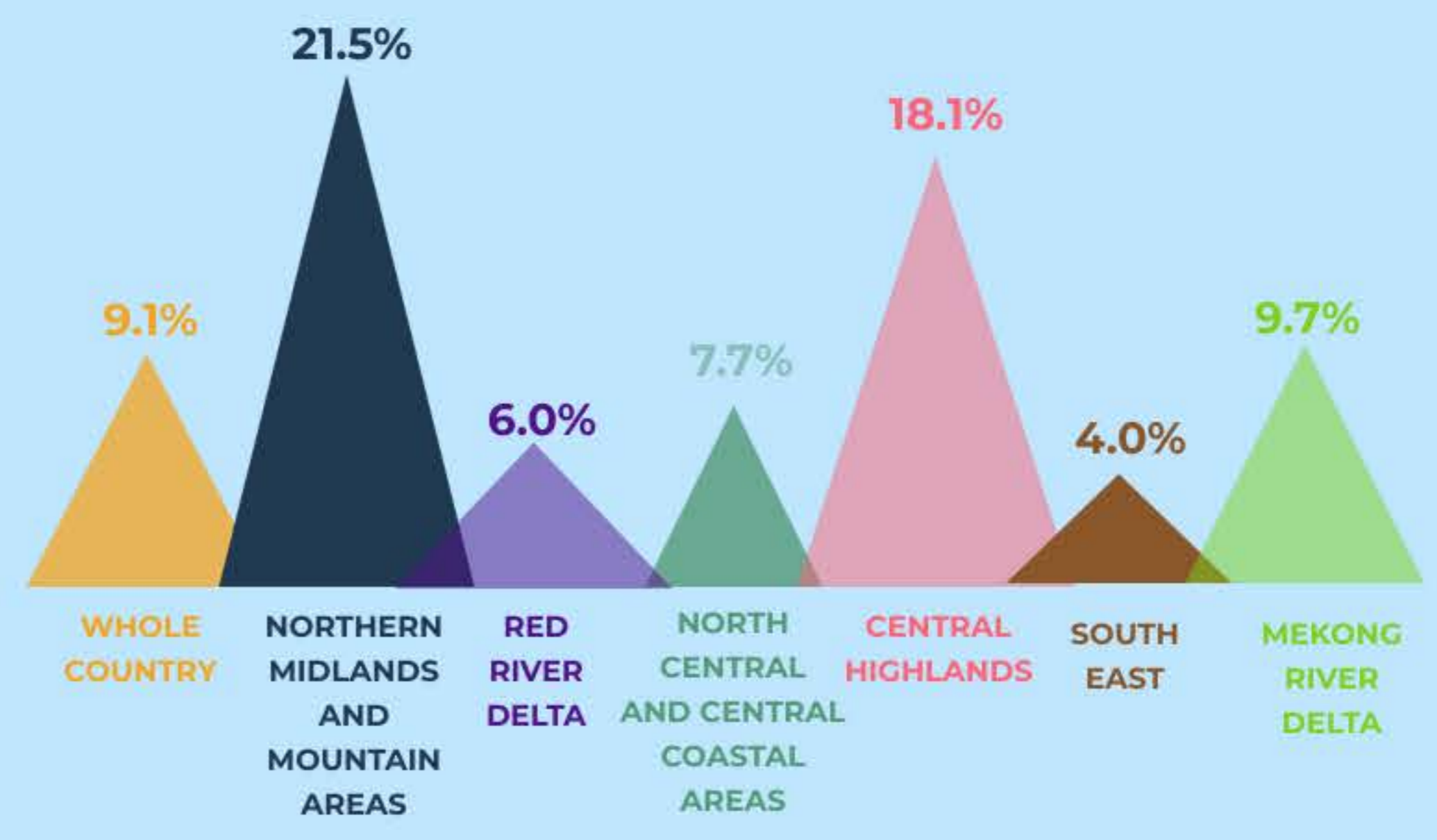
3 PROPORTION OF POPULATION



4 SINGULATE MEAN AGE AT MARRIAGE



5 PROPORTION OF WOMAN AGED 15-19 WHO WERE MARRIED BEFORE AGE 18





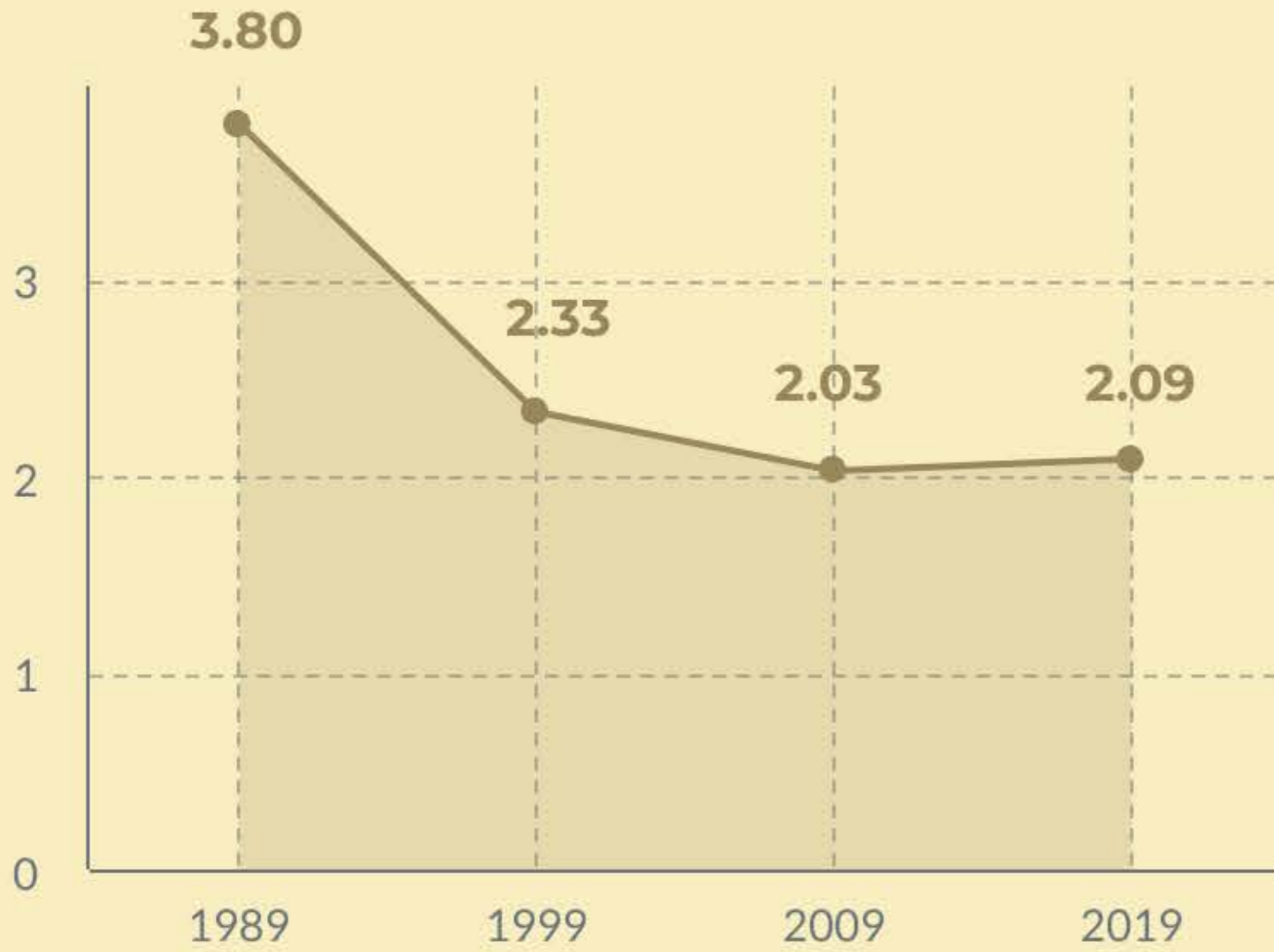
FERTILITY



MORTALITY

6 TOTAL FERTILITY RATE

Unit: Children/Woman



Total fertility rate by social economic region

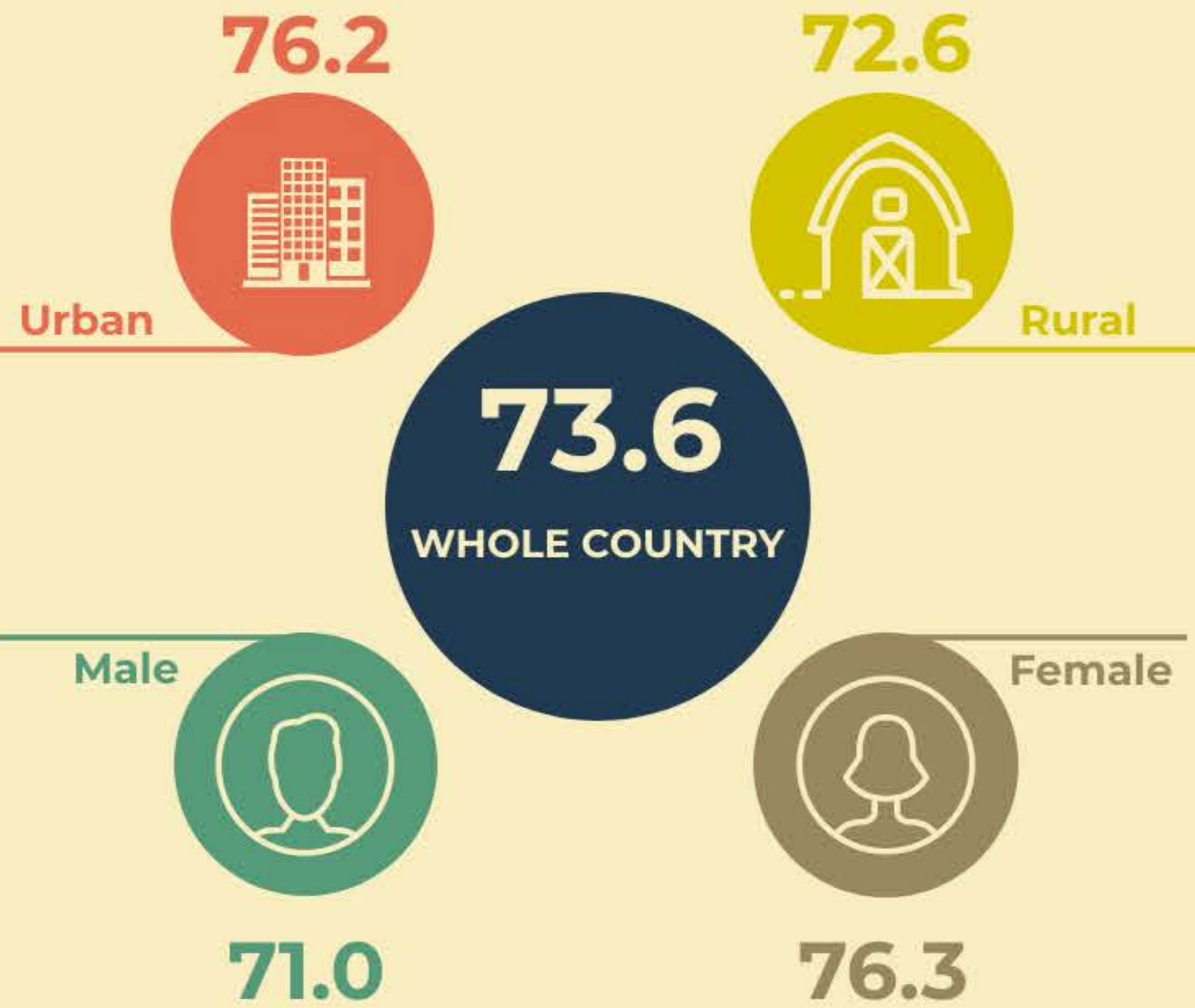
Unit: Children/Woman



7 SEX RATIO AT BIRTH

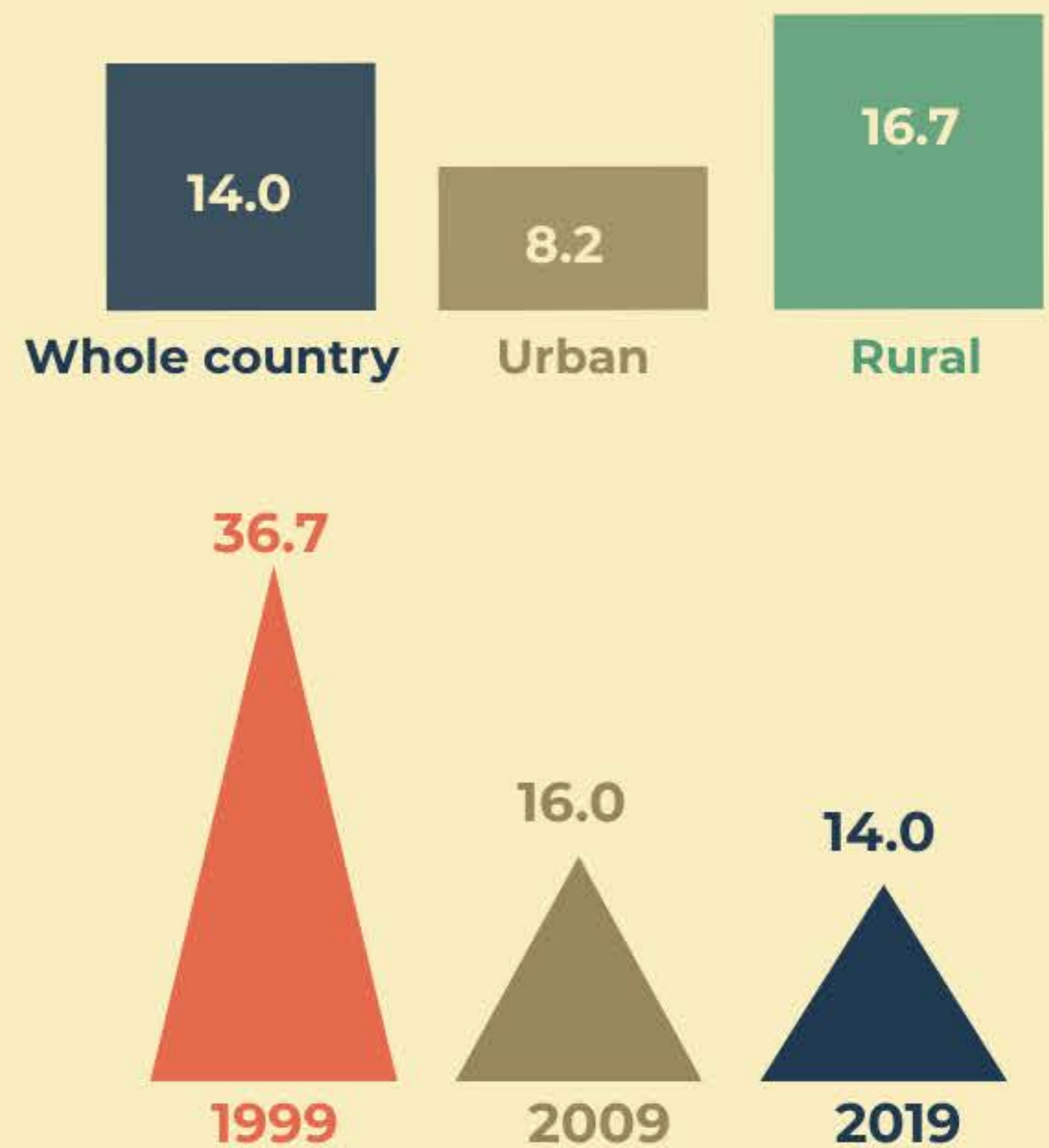


8 LIFE EXPECTANCY AT BIRTH



9 INFANT MORTALITY RATE

Unit: Number of deaths of children under age 1/1000 live births



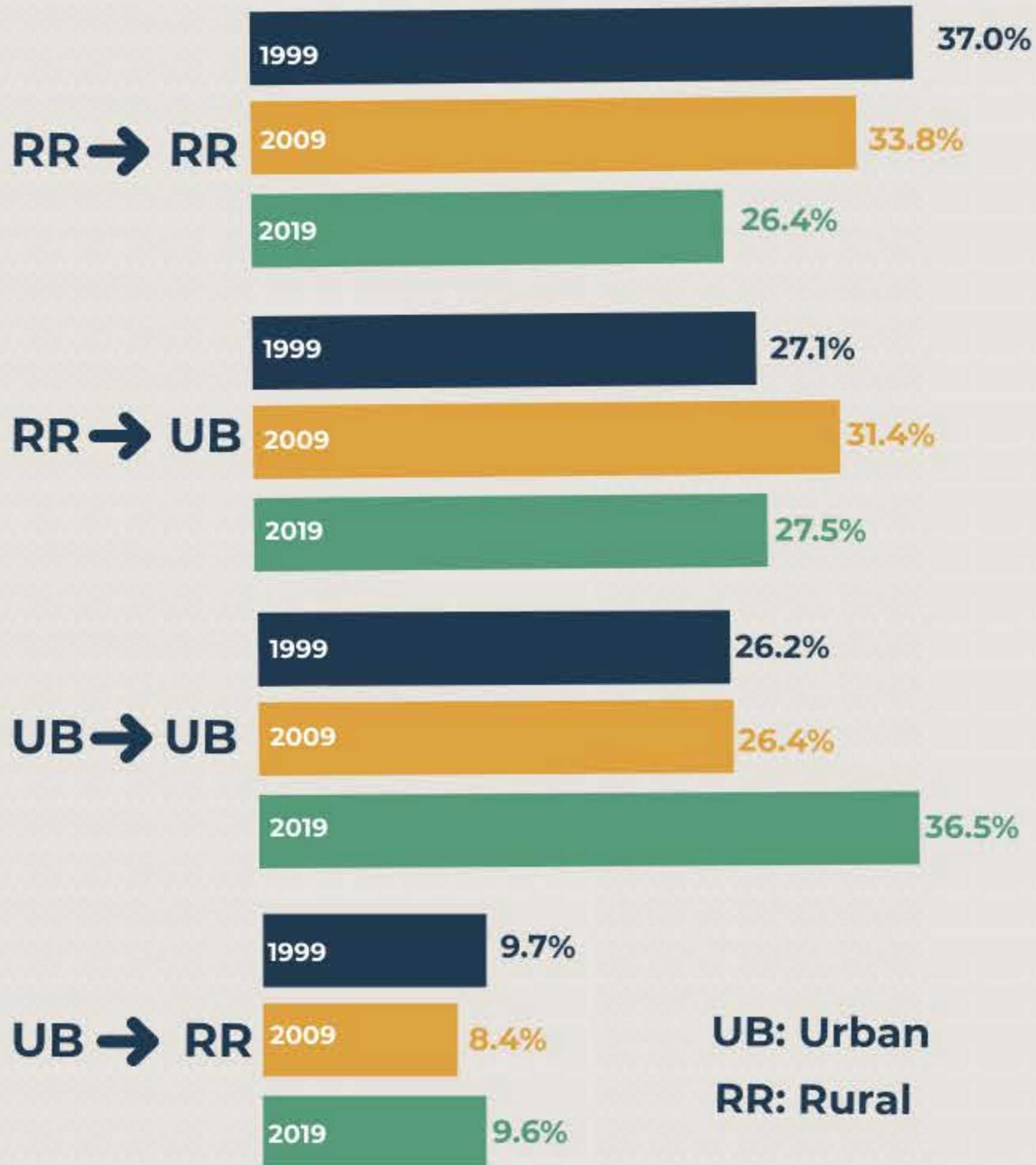
10 MATERNAL MORTALITY RATIO (2009 AND 2019)



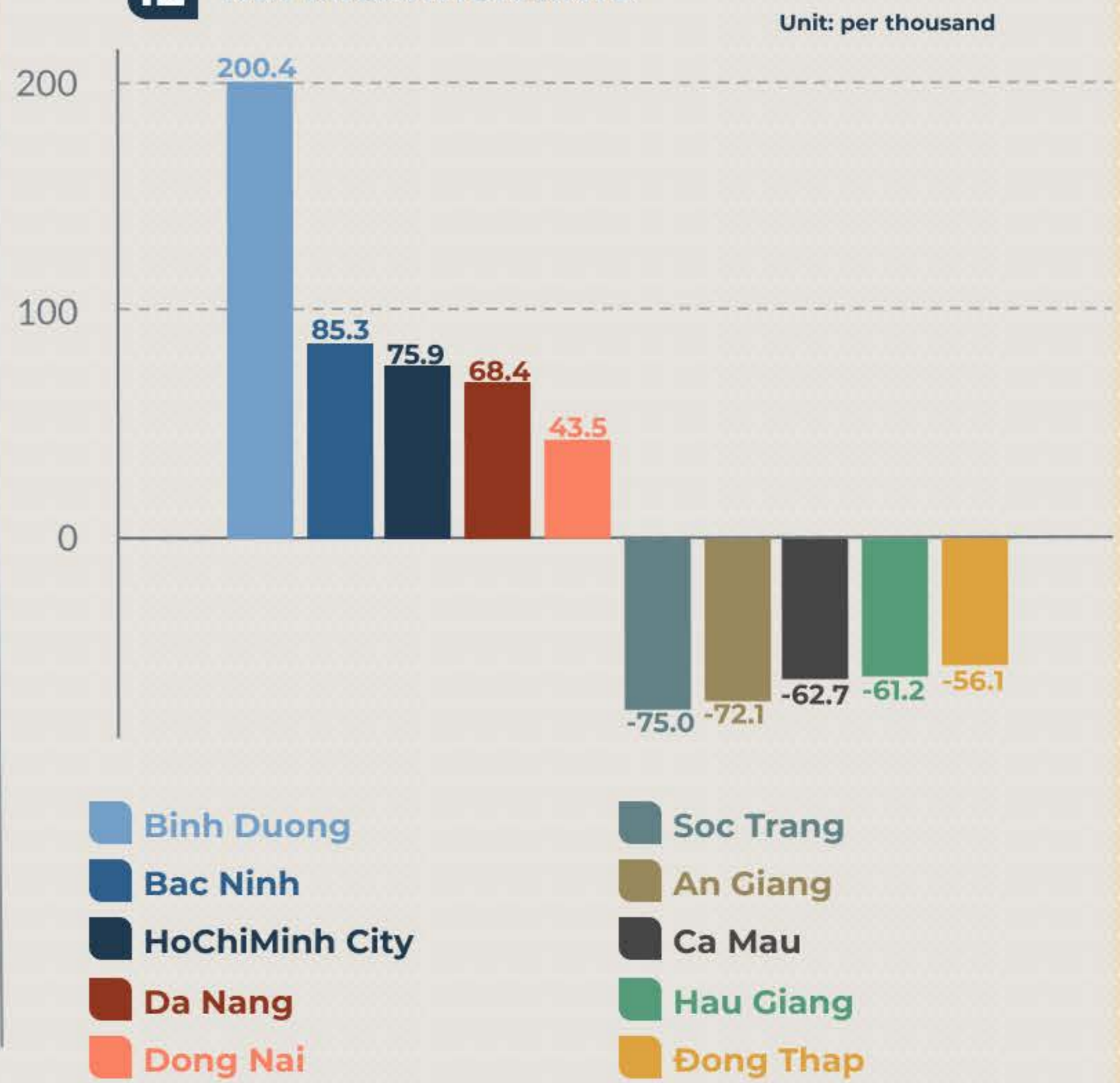


MIGRATION

11 MIGRATION FLOW

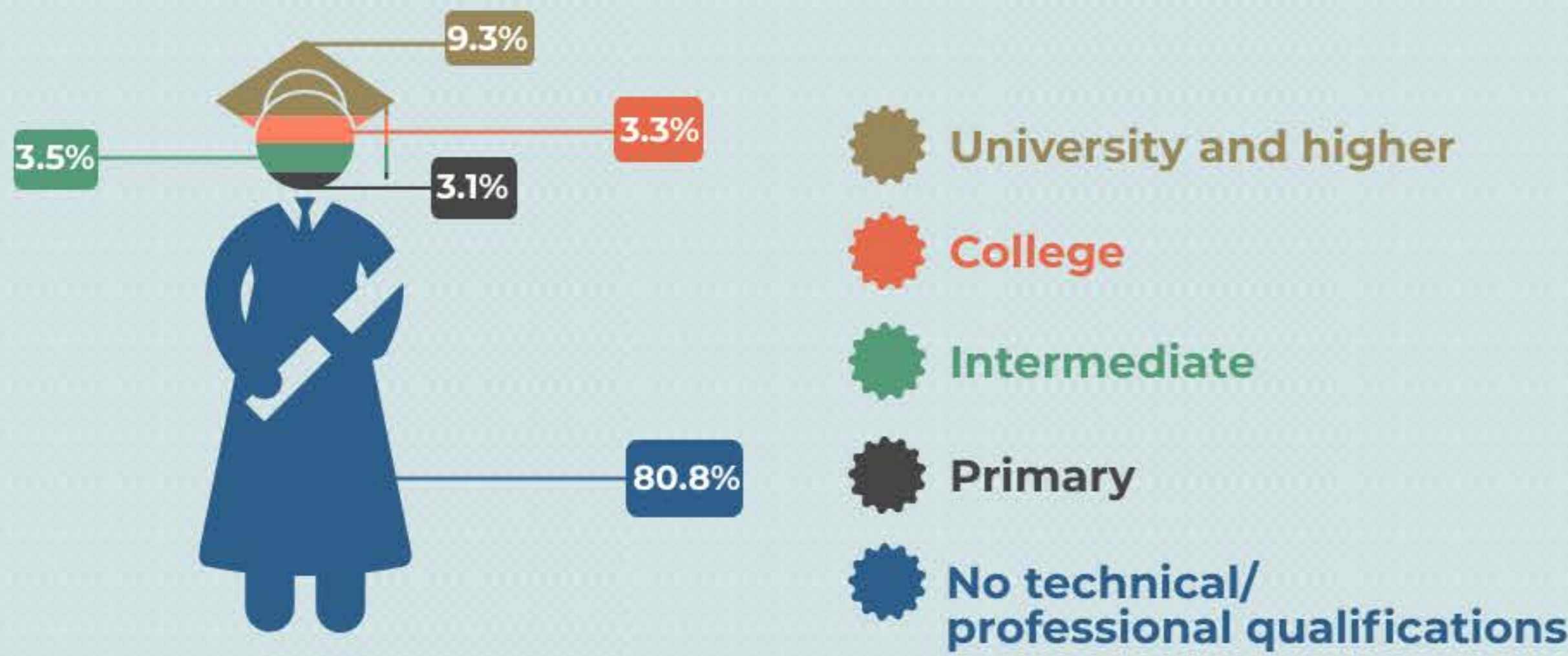


12 NET MIGRATION RATE

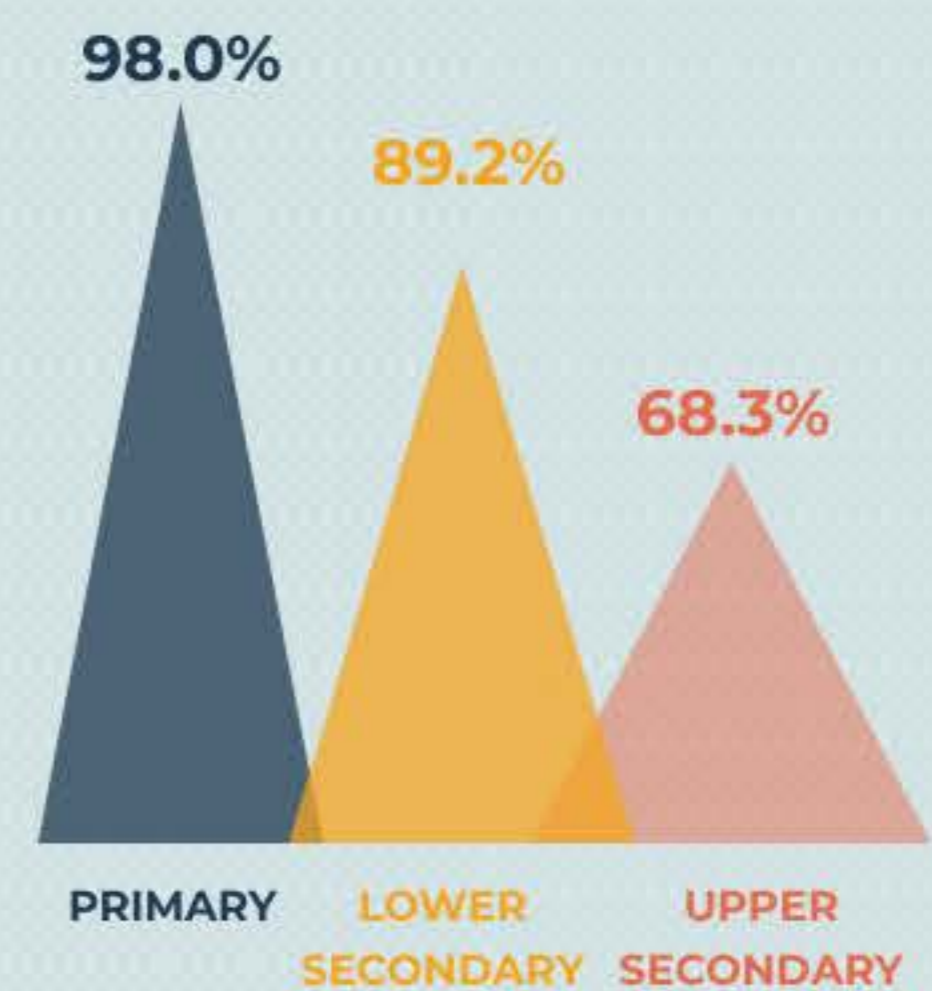


EDUCATION

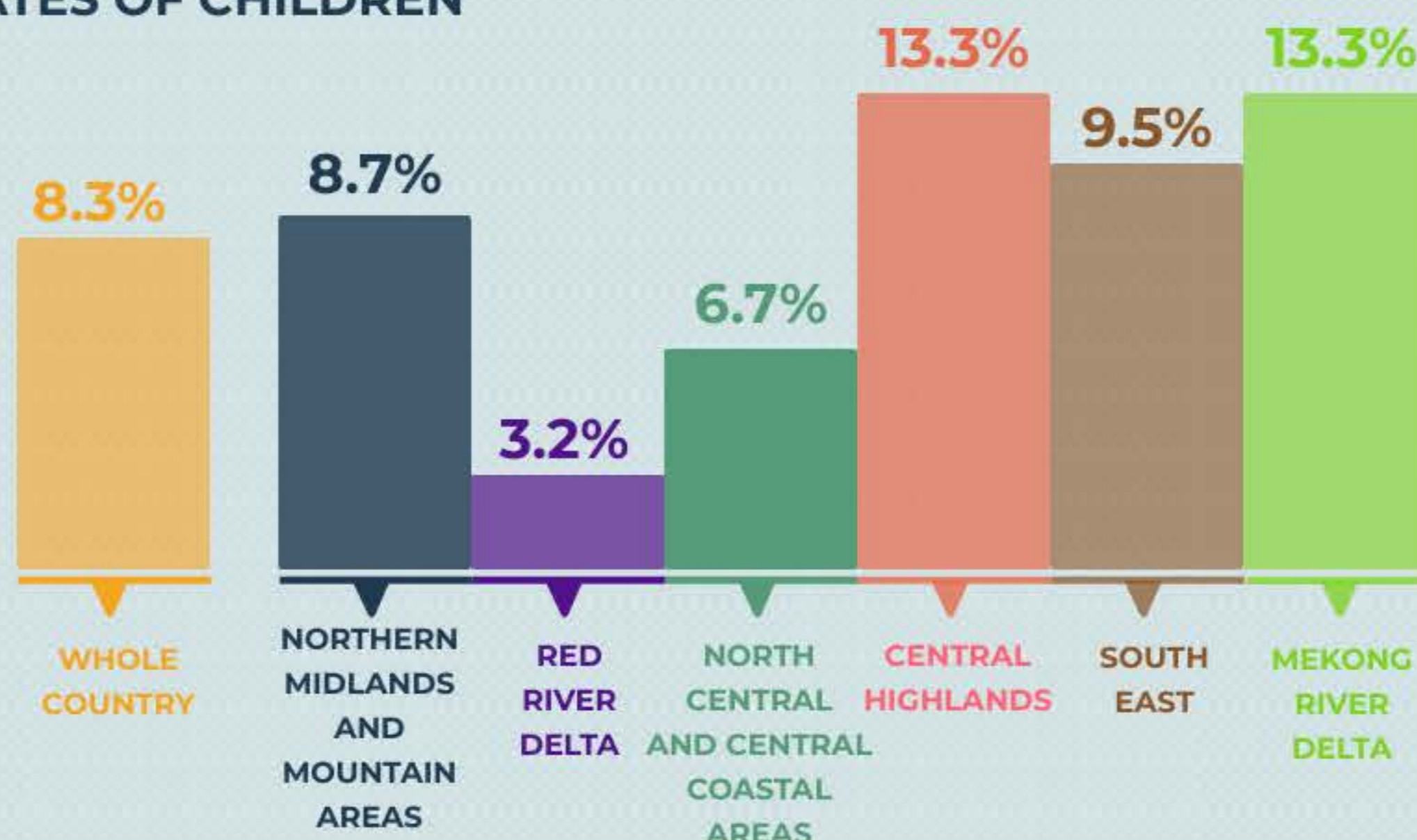
13 PROPORTION OF PEOPLE AGED 15 AND OLDER BY TECHNICAL/PROFESSIONAL QUALIFICATIONS



14 NET ENROLMENT RATES



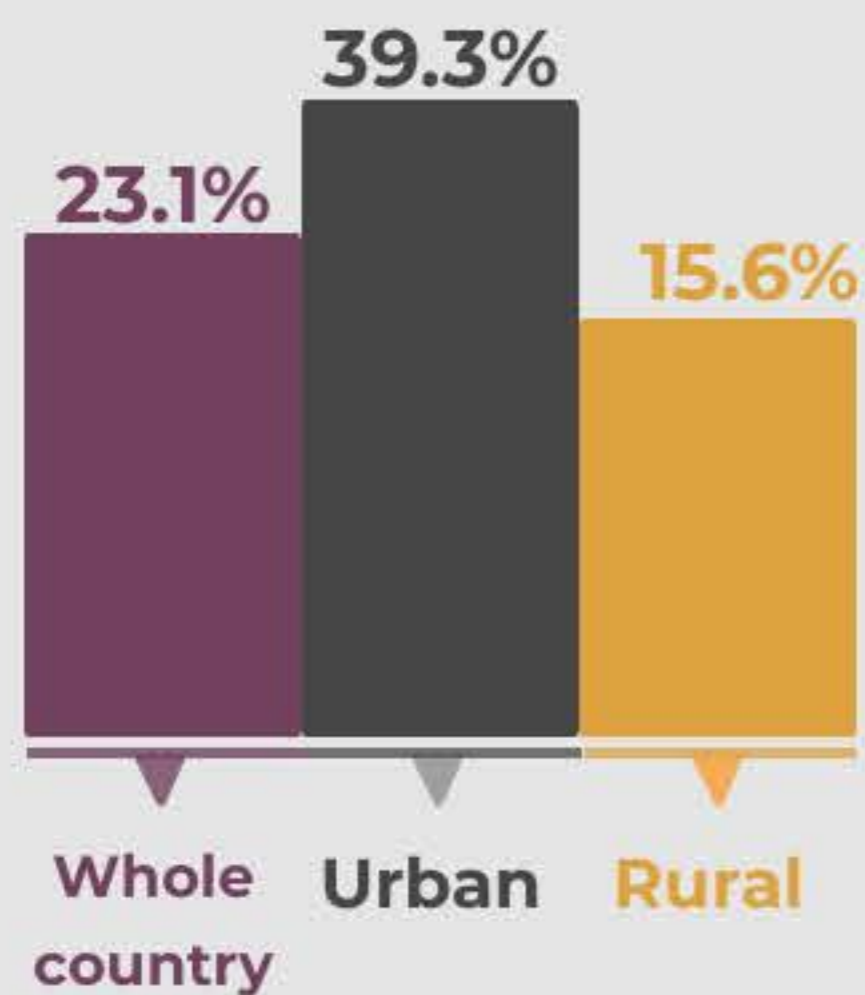
15 OUT-OF-SCHOOL RATES OF CHILDREN



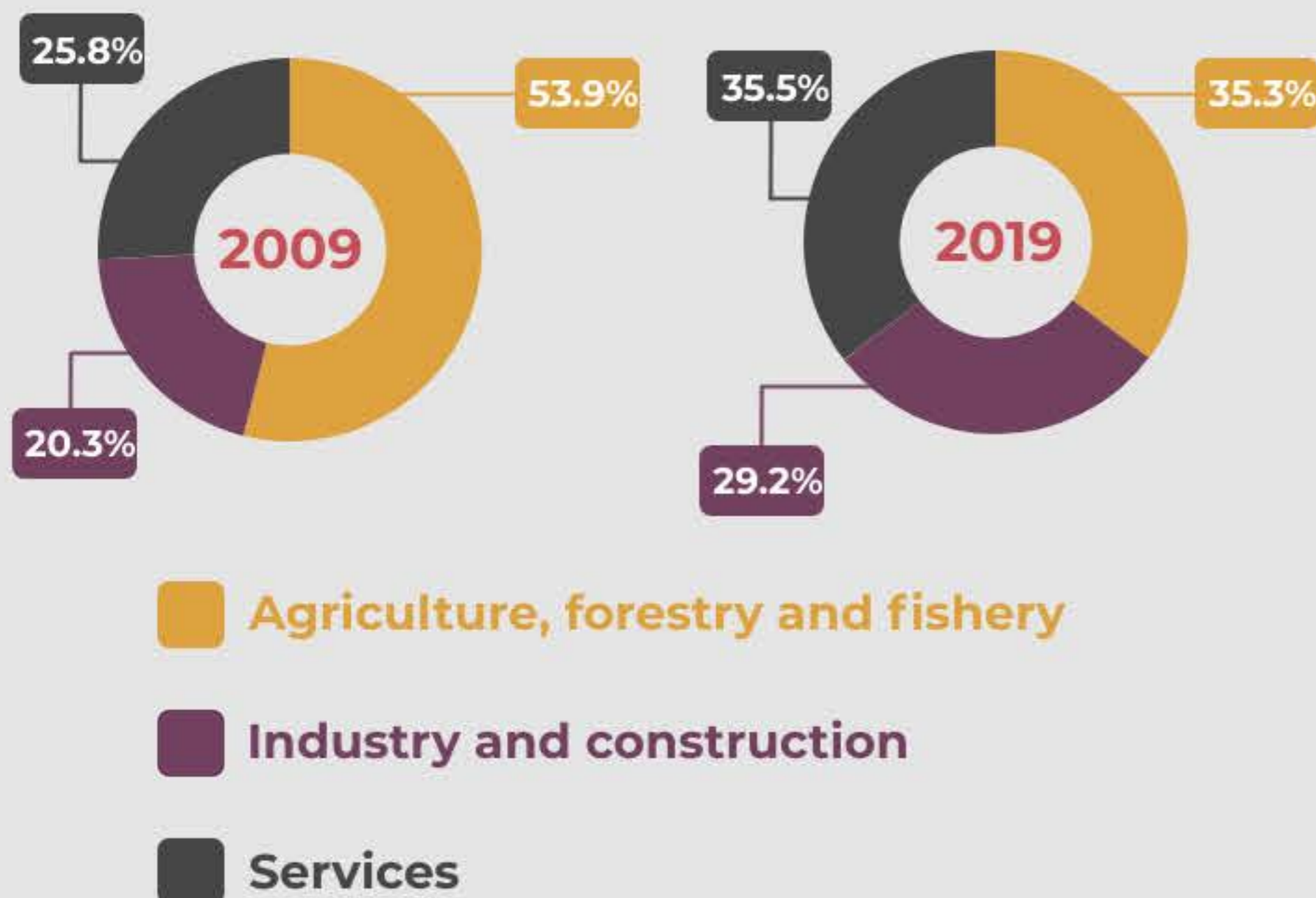


LABOR

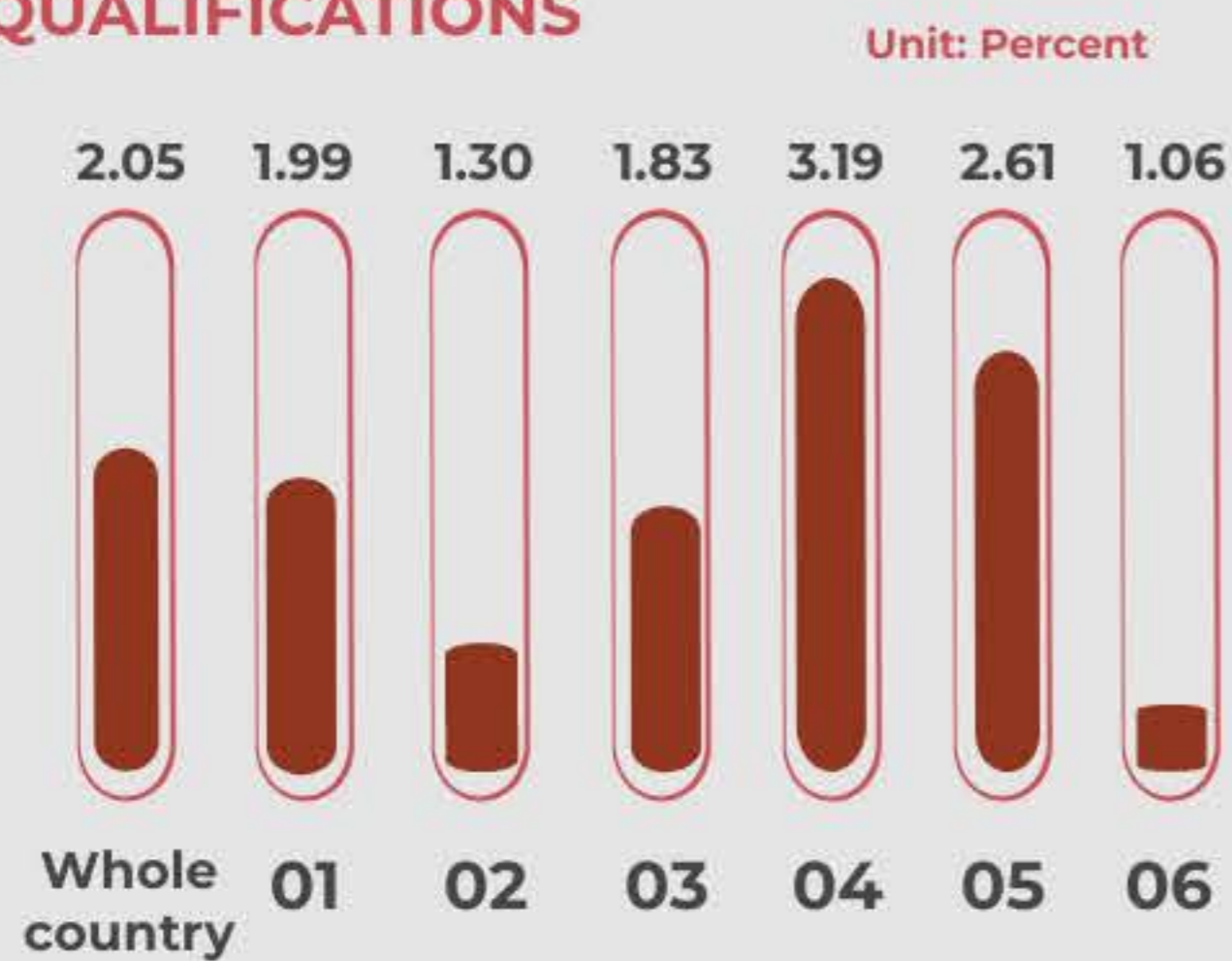
16 PROPORTION OF THE LABOR FORCE WITH TECHNICAL QUALIFICATIONS



17 DISTRIBUTION OF EMPLOYED LABOR BY MAIN INDUSTRIAL SECTORS



18 UNEMPLOYMENT RATE BY TECHNICAL QUALIFICATIONS

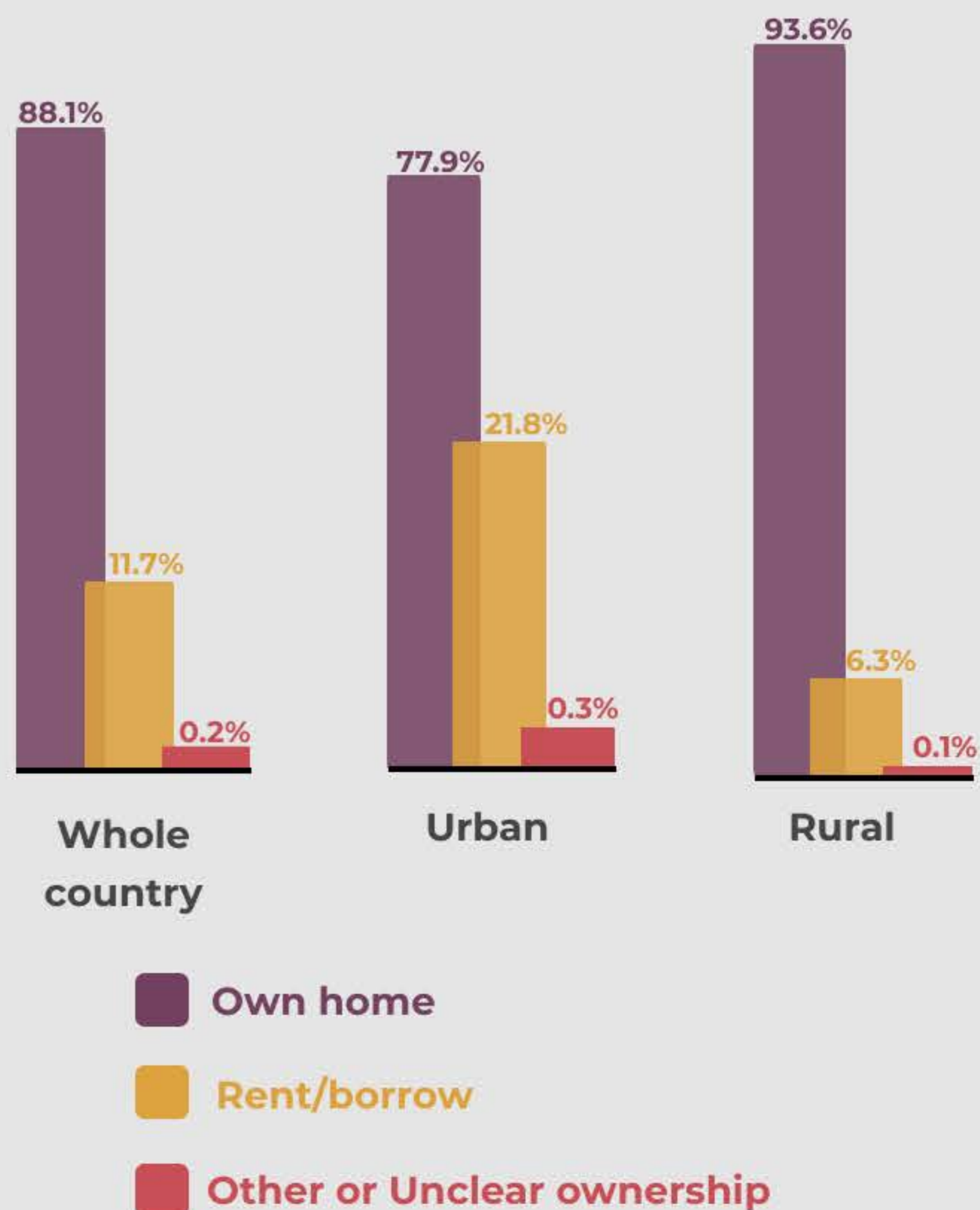


- 01 No technical/ professional qualifications
- 02 Primary
- 03 Intermediate
- 04 College
- 05 University
- 06 Postgraduate



HOUSING

19 PROPORTION OF HOUSEHOLDS WITH A DWELLING BY OWNERSHIP



20 DISTRIBUTION OF HOUSEHOLDS WITH HOUSING

