

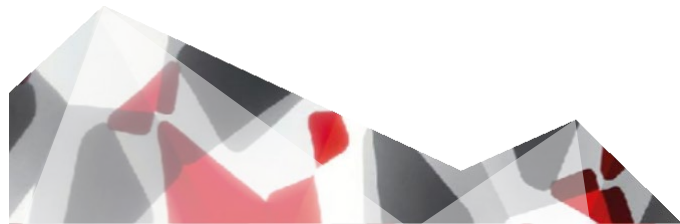
Development of cooperation on transboundary rivers in Central Asia.

An example of cooperation between Kyrgyzstan and Tajikistan

4th webinar on “Freshwater Management Indicators and Policies”.



- ❑ The initiative was proposed by the German government to the countries of Central Asia to help manage water resources and make water a subject of increased transboundary cooperation.
- ❑ It is open to all stakeholders in Central Asia
- ❑ It was part of the “Strategy for a New Partnership” between the European Union and the countries of Central Asia
- ❑ The primary task was to initiate a process of political rapprochement in Central Asia



Program “Transboundary Water Management in Central Asia”

Component II: Improving the management of transboundary river basins

River basin management plans at the national level

- The first in Kazakhstan (and in Central Asia) IWRM Plan for Aral-Syrdarya basin, for Kazakhstan part was developed and approved in 2011
- A new methodology for developing Basin Management Plans and strengthening Basin Councils was developed in 2010.
- (in collaboration with CAREC)

River basin management plans at the transboundary level

- Central Asia's first transboundary river basin IWRM plan was developed for the Isfara River basin (Kyrgyzstan and Tajikistan) (2013).
- Guidelines for basin planning at the regional level, for Kazakhstan, Kyrgyzstan and Tajikistan were developed in 2013. (in collaboration with CAREC)

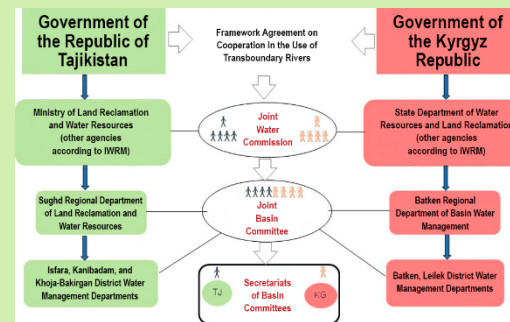
Strengthening the capacity of BWOs and their branches

- Strengthening the technical capacity of BWO Amudarya and BWO Syrdarya (2015)
- Strengthening regional cooperation through the creation of a joint automatic water metering system
- International Day of the Amu Darya River

Developing institutional capacity for cooperation in the Isfara River basin (Kyrgyzstan, Tajikistan)



Creation of authorized working groups (based on local expertise and stakeholder involvement) to develop the basin plan



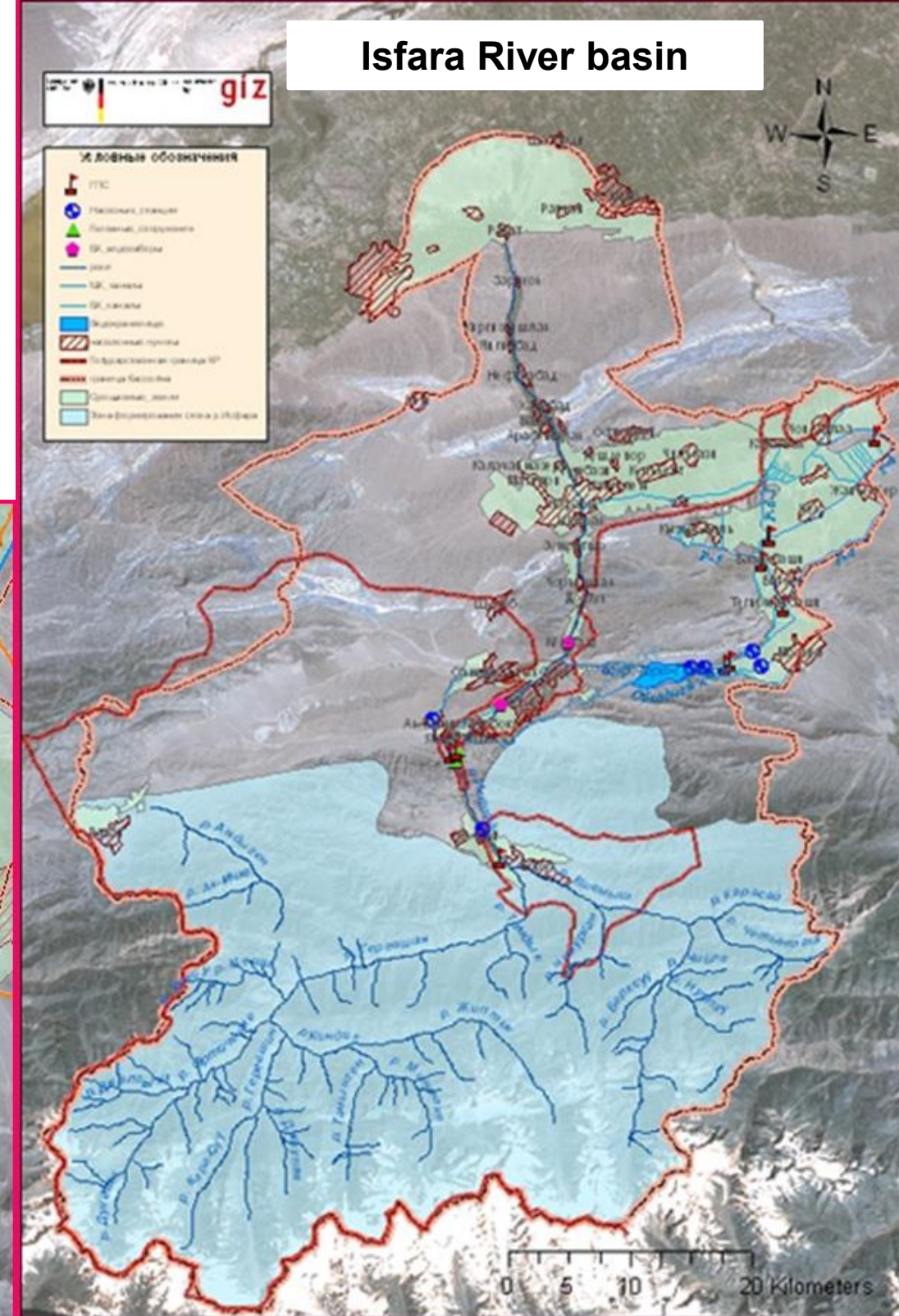
Support for the creation of legislative and institutional frameworks for basin management



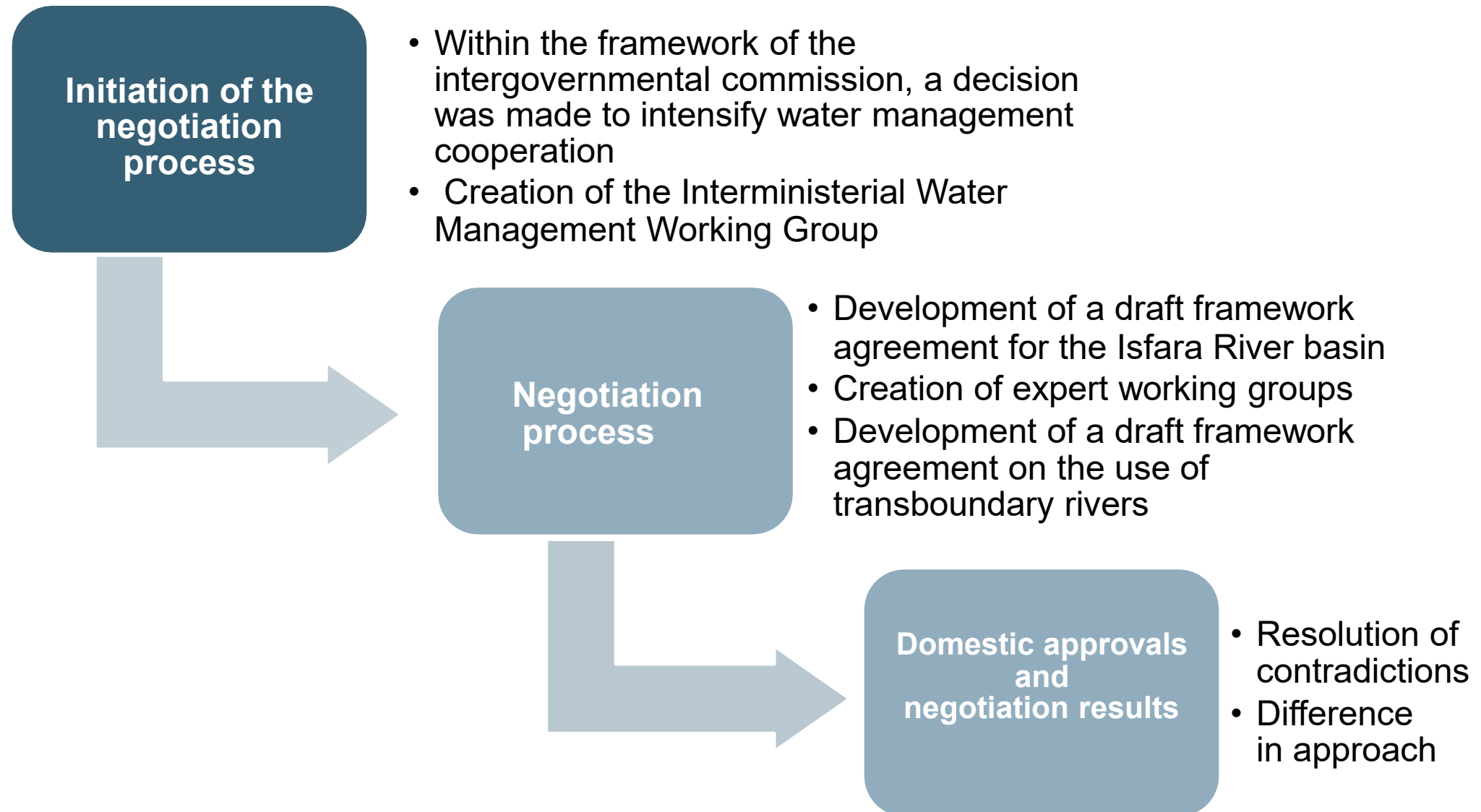
Involvement and use of modern world practices and international expertise

Negotiation process on the Agreement between the Government of the Kyrgyz Republic and the Government of the Republic of Tajikistan on Cooperation in the Use of International Rivers

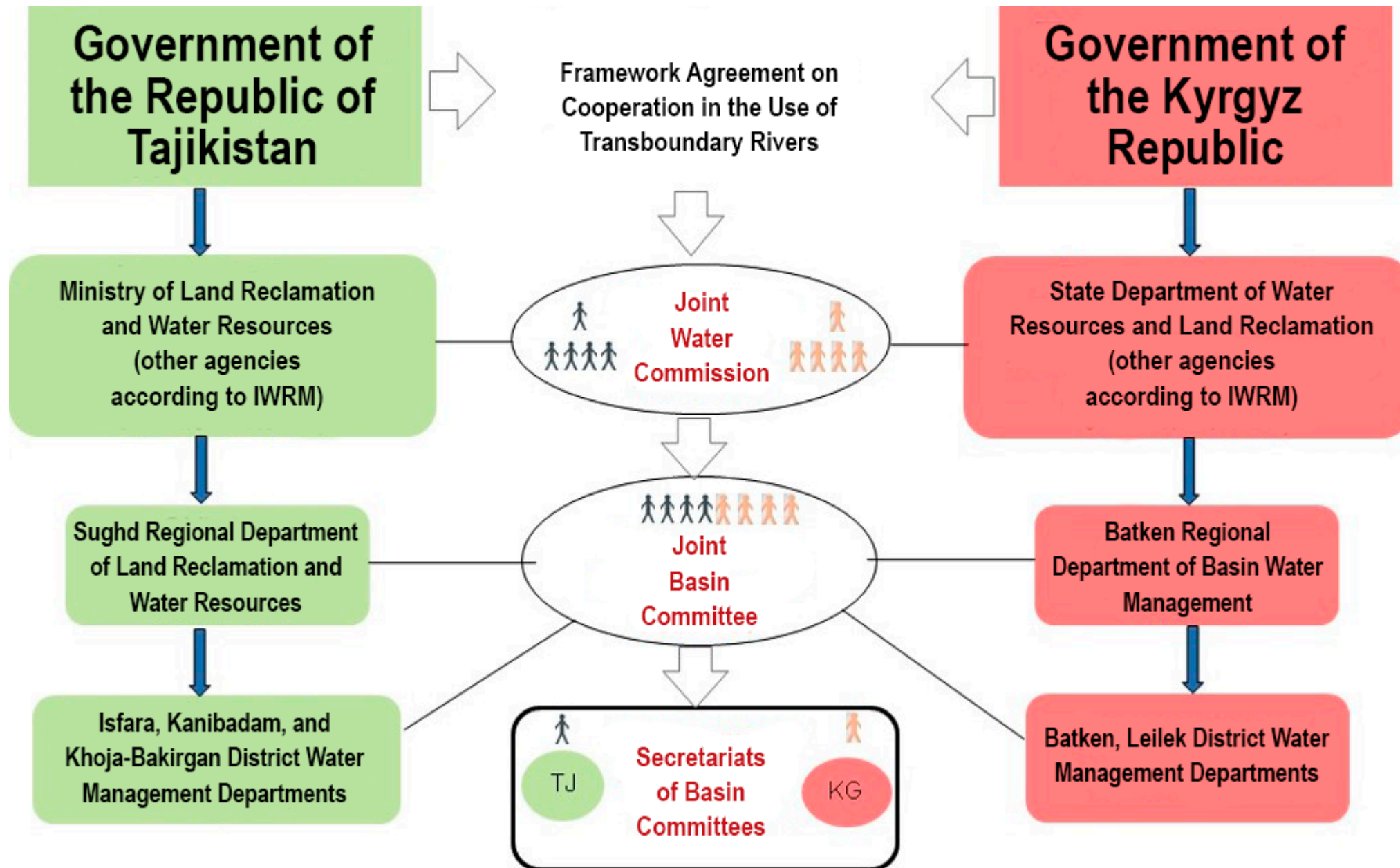
Isfara River basin



The main stages of the negotiation process



Structure of the draft framework agreement



Support for the development of the basin plan for the Isfara River

Working groups on basin planning have been created by the Kyrgyz Republic and the Republic of Tajikistan

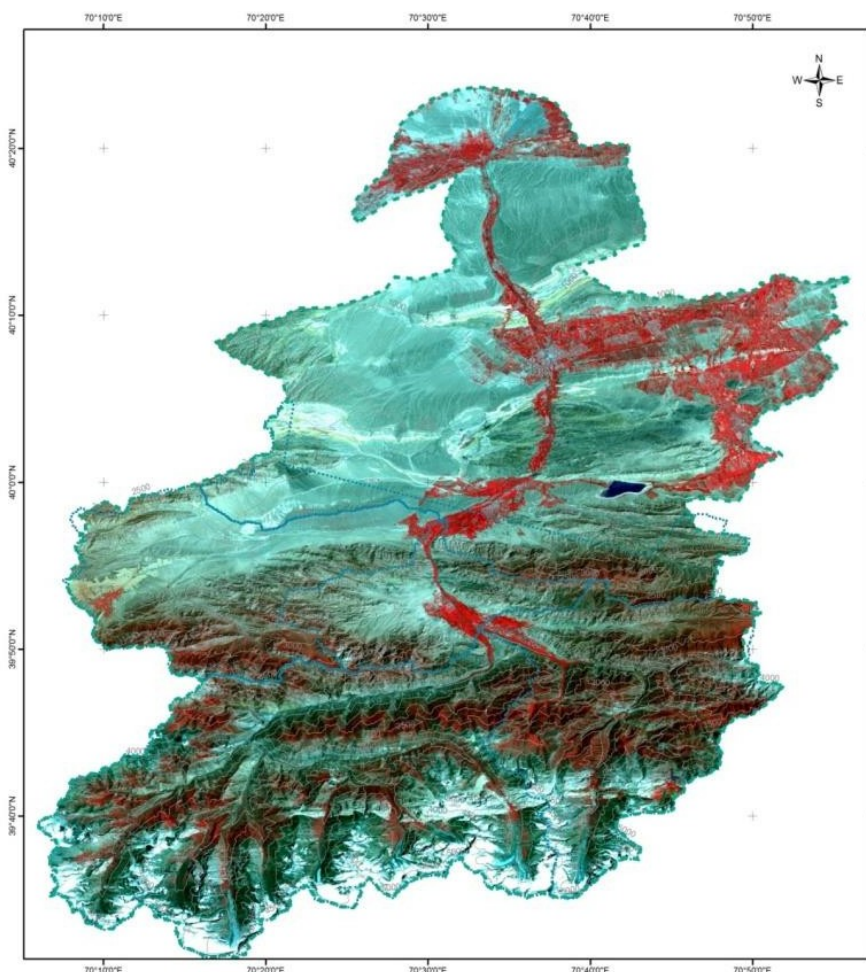


**Working group meetings and trainings on basin planning.
Including joint meetings of representatives of groups from Kyrgyzstan and Tajikistan**

Expert work within the analysis of the situation in the Isfara River basin

The result of the work of experts in the development of land use maps of the Isfara River basin

Landsat map in the Isfara River basin (12.7.2011)



Условные обозначения

- Граница бассейна
- Subbasins

Landsat Image

Recorded on 12.7.2011

- Red: Band_4
- Green: Band_3
- Blue: Band_2

0 5 10 20 30
Километры

Область Худжанд
Согдийская область, Таджикистан

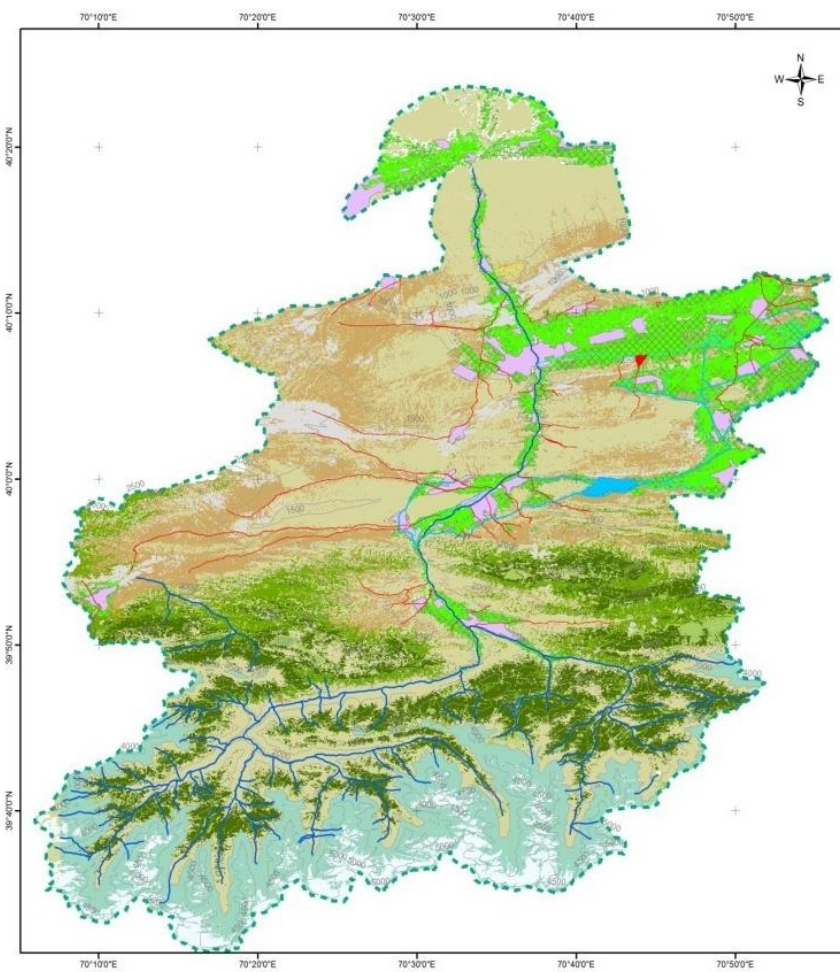
Область Баткен
Баткенская область, Кыргызстан

Департамент водного хозяйства
и мелиорации КР
Кыргыз НИИ ирригации

giz Deutsche Gesellschaft für Internationale Zusammenarbeit (GIZ) GmbH

Карта создана в марте 2013 г.
Программа "Трансграничное управление
водными ресурсами в Центральной Азии",
финансированная Евросоюзом и Германским
Правительством.
Поддержка от ученых университета Вюрцбурга
(Германия).

Map of land resources of the Isfara River basin



Условные обозначения

- Граница бассейна
- дороги
- МХ каналы
- ВХ каналы
- Реки
- Водохранилище
- Населенные пункты

Зоны риска селевых потоков

- Высокий
- Средний
- Низкий

Площадь бассейна р. Исфара: 383 281 га

Использование земельных ресурсов

- Ивственные без растительного покрова (4.1%)
- Полупустынные предгорные зоны (34.9%)
- Орошаемая площадь (5.3%)
- Орошаемые сады (6.1%)
- Кустарники (12.9%)
- Редколесье (5.9%)
- Горные леса (11.6%)
- Горные луга (2.1%)
- Скальные зоны (11.1%)
- Снежники и ледники (3.6%)

0 5 10 20 30
Километры

Область Худжанд
Согдийская область, Таджикистан

Область Баткен
Баткенская область, Кыргызстан

Департамент водного хозяйства
и мелиорации КР
Кыргыз НИИ ирригации

giz Deutsche Gesellschaft für Internationale Zusammenarbeit (GIZ) GmbH

Карта создана в марте 2013 г.
Программа "Трансграничное управление
водными ресурсами в Центральной Азии",
финансированная Евросоюзом и Германским
Правительством.
Поддержка от ученых университета Вюрцбурга
(Германия).