

# Introduction of an EIT Raw Materials upscaling project proposal: **AREAS**

**Advanced Resource  
Exploration & Assessment  
Solutions**

Carlo Cormio



**RESOURCE MANAGEMENT WEEK 2021**

ENABLING SUSTAINABILITY PRINCIPLES IN RESOURCE MANAGEMENT



**UNECE**



### ■ **EIT Raw Materials**

Innovation Community developing raw materials into a major strength for Europe. Minerals, metals and advanced materials are key enablers to achieve the objectives of the European Green Deal.

### ■ **KAVA 8. Call for projects 2022**

Funding project proposals that will generate a significant impact on European industrial competitiveness, innovation capacity and human capital, as well as empower students and entrepreneurs.

- Education projects
- Regional Innovation Scheme projects
- **Upscaling projects**

<https://eitrawmaterials.eu/>



- **Market need addressed**

Lack of a service / tool for assessing and communicating the viability of material recovery from mining and metallurgical residues

- **Project aim**

**Create integrated resource exploration and assessment solutions** (SW, technological products and services), turning stored residues into "measured resources"

**Introduce a standardised (UNFC-based) approach and decision support tool** to allow for a seamless and integrated analysis of multidisciplinary datasets and assessment methods



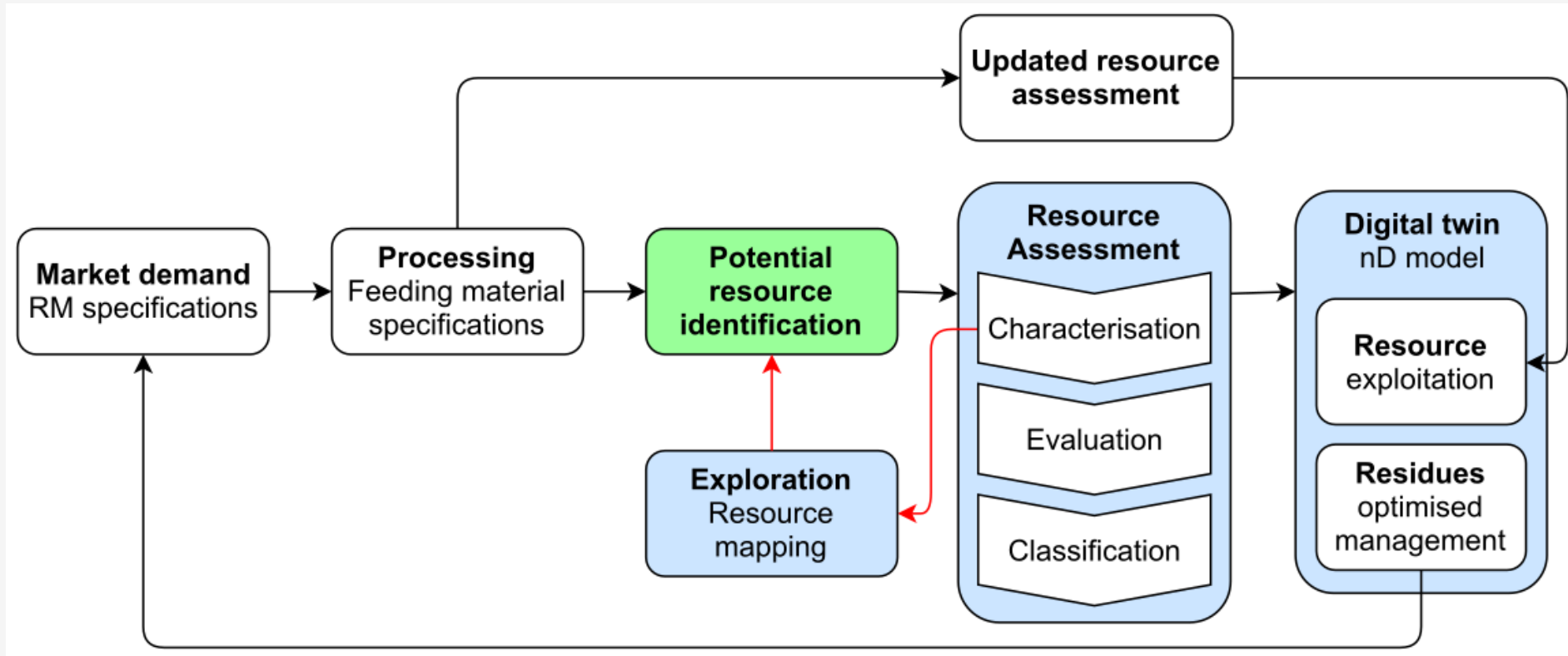
### ■ Objectives

Provide **innovative solutions** to:

- **map the potential supply of secondary RMs** from EU stocks and wastes;
- **exploit EU Earth Observation data** for exploration and identification of residues;
- **provide a comprehensive yet easy to use decision support and control tool** for mining/metallurgical operations;
- **unlock the RMs recovery potential of mining/metallurgical residues**;
- **reduce the environmental impact** of waste originating and accumulating at mining sites.



### ■ AREAS approach





### ■ Outputs

1. **An innovative and highly specialised resource exploration & assessment service**, addressing all the steps of resource assessment (characterization, evaluation, classification)
2. **A resource assessment and asset management software** providing decision support features;
3. **Innovative technological solutions** for spectral imaging-based materials composition mapping;
4. **Training programs** for MC students, PhD, Professionals



- **Impacts**
  - **Improve:**
    - **knowledge on availability of RMs** in EU countries;
    - **industrial symbiosis** in disadvantaged areas;
  - **Reduce:**
    - **import of RMs** from non-EU countries through residues / waste valorisation;
    - **consumption of land and soil**;
    - greenhouse gases **emission**;
    - **environmental impact** of mining / extractive operations;
    - **storage facilities management costs**;
    - environmental compensation fees;
    - **investment risk**

# AREAS

## Advanced Resource Exploration & Assessment Solutions



### Partners

CNR (IGAG & ISTEAC dept.)

SERENGEO

Fondazione Bruno Kessler (FBK)

Ferrara University

Worldsensing

Leiden University (CML)

SGA Graniti

VITO





# Thank you!

Ph.D. Eng. Carlo Cormio  
SERENGEIO Srl – [c.cormio@serengeo.com](mailto:c.cormio@serengeo.com)

**UNECE**

Date 28 | 04 | 2021, Geneva



**RESOURCE MANAGEMENT WEEK 2021**

ENABLING SUSTAINABILITY PRINCIPLES IN RESOURCE MANAGEMENT



**UNECE**