



The Geological Surveys of Europe

EUROGEO SURVEYS



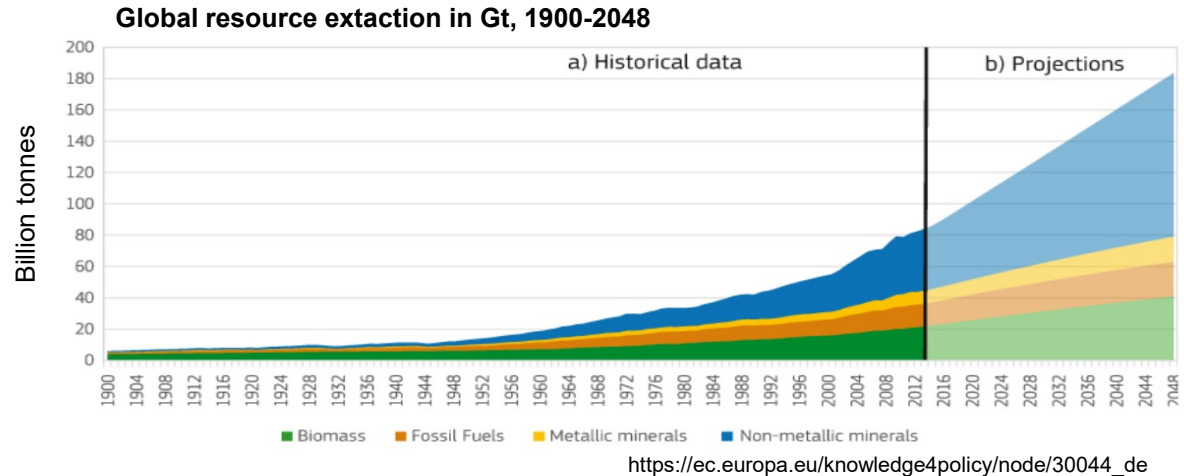
EGS activity with UNFC and future plan (*GSE*)

[Zoltán Horváth \(MBFSZ\)](#), [Daniel de Oliveira \(LNEG\)](#)

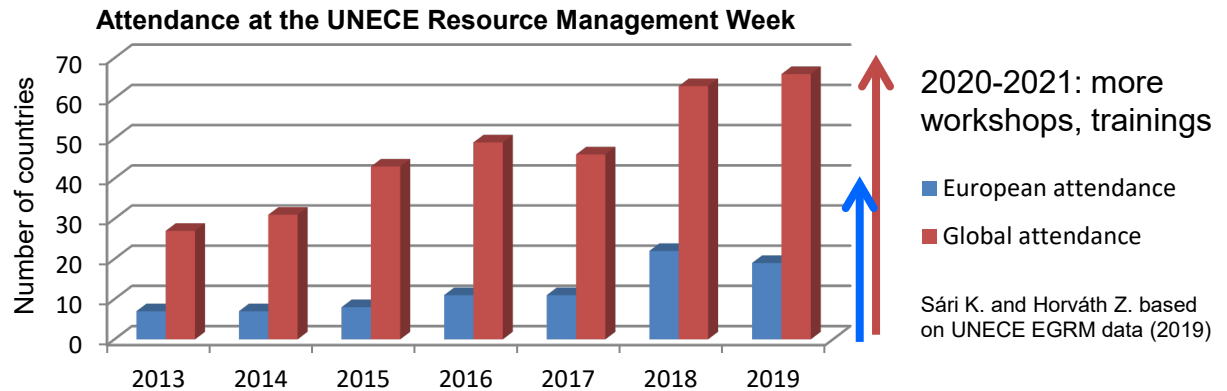
40 Years Listening to the Beat of the Earth

Introduction

- Growing need for raw materials



- Growing need for a resource management tool

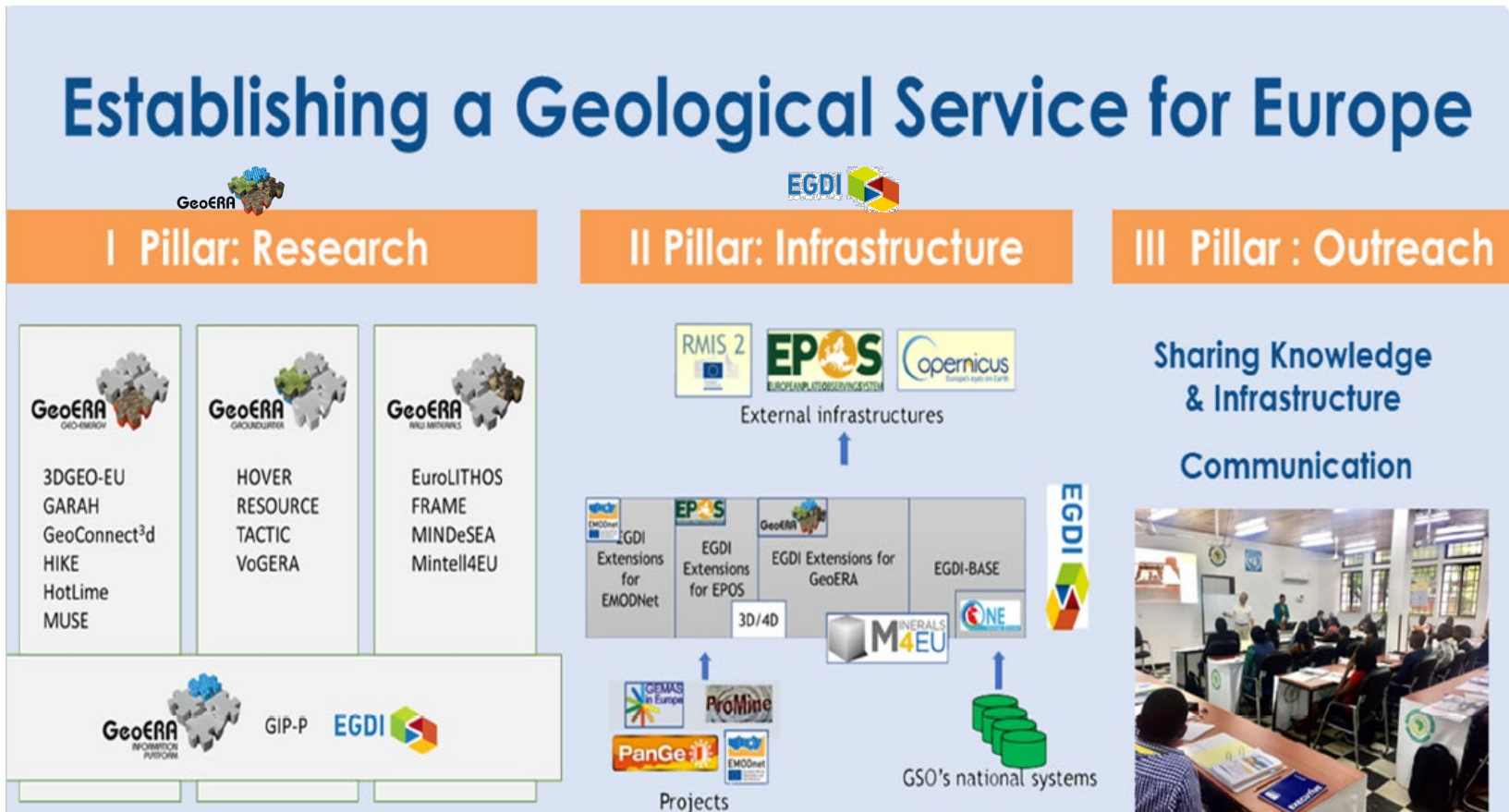


European Geological Surveys are the main data providers handling geoscientific and raw material data with statistical and spacial data and support the development and the use of UNFC



3 PILLAR STRUCTURE

Establishing a Geological Service for Europe



By Slavko Solar (EGS Secretary General)



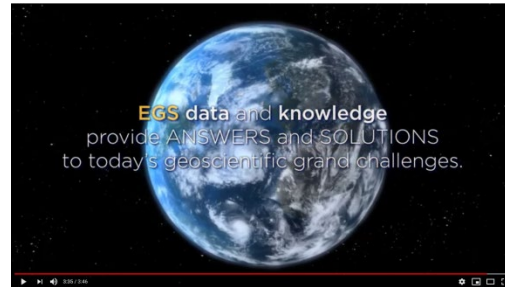
EuroGeoSurveys - The Geological Surveys of Europe

Activities with UNFC

- EGS MREG, GE, GW mineral resource, geenergy, groundwater expert groups

Memorandum of Understanding between UNECE and EGS (2018-2021) will continue

- UNECE EGRM



<https://www.youtube.com/watch?v=DhSNjoqp81I>



<https://www.unece.org/energy/welcome/areas-of-work/unfc-and-sustainable-resource-management/media.html>

- GEOERA Program



| COUNTRY_NAME | Experience in the EGS MREG | Representation | Mapping | Case studies (ns: natural stone gr: graptite m: marin, E: energy) | Harmonization (yes/can) | Guidance: exist, progress, involvement) |
|------------------------|----------------------------|----------------|------------|---|-------------------------|---|
| Albania | | | | | | |
| Austria | | | | aggregates, anthropogenic | | MINTELL4EU |
| Belgium | | | | phospate, limestone | | MINTELL4EU |
| Bosnia and Herzegovina | | | | | | |
| Bulgaria | | | | | | |
| Croatia | | | | limestone, aggregates, ns, gr | | MINTELL4EU |
| Cyprus | | | developing | knowledge, intention | | |
| Czech Republic | | | | | | |
| Denmark | | | | limestone, aggregates (m) | | MINTELL4EU |
| Estonia | | | | | | |
| Finland | | | | gold, Co, Cu, | | MINTELL4EU |
| France | | | | hydro, renewables | | |
| Germany | | | | e.g. anthropogenic | | |
| Greece | | | | | | |
| Hungary | | | | all min. res., mine waste | | MINTELL4EU |
| Iceland | | | | | | |
| Ireland | | | | | | |
| Italy | | | | | | |
| Netherlands | | | | | | |
| Norway | | | | Cu, Co, Phos, agg., ns., gr, OG | | MINTELL4EU |
| Poland | | | | | | |
| Portugal | | | | metallic, non-met., E | | MINTELL4EU |
| Romania | | | | | | |
| Serbia and Montenegro | | | | | | |
| Slovakia | | | | | | |
| Slovenia | | | | Limestone | | MINTELL4EU |
| Spain | | | | | | |
| Sweden | | | | REE | | MINTELL4EU |
| Switzerland | | | | | | |
| Ukraine | | | | graphite | | MINTELL4EU |
| United Kingdom | | | | ores, aggregates | | |

UNFC is increasingly relevant and at the frontier of geoscience!

Supporting documents

- Guidances, guidelines, publications to facilitate national, regional and EU-level data harmonization with UNFC

A GUIDANCE FOR THE APPLICATION OF THE UNFC-2009 FOR MINERAL RESOURCES IN FINLAND, NORWAY AND SWEDEN



SGU
Sveriges geologiska undersökning
Geological Survey of Sweden

Ministry of the Environment
of the Czech Republic

MINERAL COMMODITY SUMMARIES
OF THE CZECH REPUBLIC
2017
(Statistical data to 2016)

Czech Geological Survey

October 2017



Funded by
the European Union



Optimizing quality of information in RAW MATERIAL data collection across Europe

Deliverable 1.4
Draft good practice guidelines for
harmonisation of resource and reserve data

| | |
|-------------------------|--|
| Title of the project: | Optimizing quality of information in RAW MATERIAL data collection across Europe - ORAMA |
| Grant Agreement number: | 776517 |
| Funding Scheme: | H2020 – SCS-15-2017 – CSA |
| Start date: | 01.12.2017 |
| Duration: | 24 months |
| Document title: | Deliverable 1.4: Draft good practice guidelines for harmonisation of resource and reserve data |
| Work Package: | 1 |
| Author(s): | Tom Bide, Teresa Brown, Gus Gun, Richard Shaw, Carolin Kresse and Eimear Deady (BGS), Pedro Delgado (IGME), Zoltan Horvath (MBFSZ), Spela Bavec and Duška Rokavec (GeoZS), Taina Eloranta (GTK) and Karl Aasty (NGU) |
| Date of delivery: | 30/4/2019 |
| Dissemination level: | PU ¹ Link: https://orama-h2020.eu/wp-content/uploads/ORAMA_WP1_DL1.4_20190430_BGS_v1.0.pdf |
| Reviewed by: | Final |
| Status of the document: | Final |
| Document location: | Timer: Documents / Deliverables |
| Project web site: | http://www.orama-h2020.eu |

¹ PU=public, PP= Restricted to other programme participants (including the Commission Services), RE= Restricted to a group specified by the consortium (including the Commission Services), CO= Confidential only for members of the consortium (including the Commission Services)



EuroGeoSurveys - The Geological Surveys of Europe



ORAMA: other cases

🔒 orama-h2020.eu/downloads/

Public ORAMA deliverables and dissemination material such as flyers of each embedded window and downloaded by clicking the Download icon.

Deliverables Led by GTK

WP1 Primary raw materials

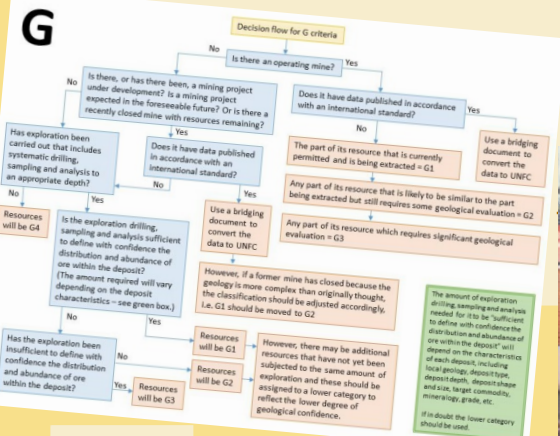
WP2 Secondary Raw Materials

WP3

D1.1 Initial analysis for the improvement of reporting

[DOWNLOAD / OPEN FILE](#)

D1.2 Final analysis and recommendations for raw materials



DOWNLOAD THE TRAINING MATERIALS

Agenda

- Morning Session (11 MB)
- Primary Raw Materials Session (21 MB)
- Secondary Raw Materials Session (34 MB)

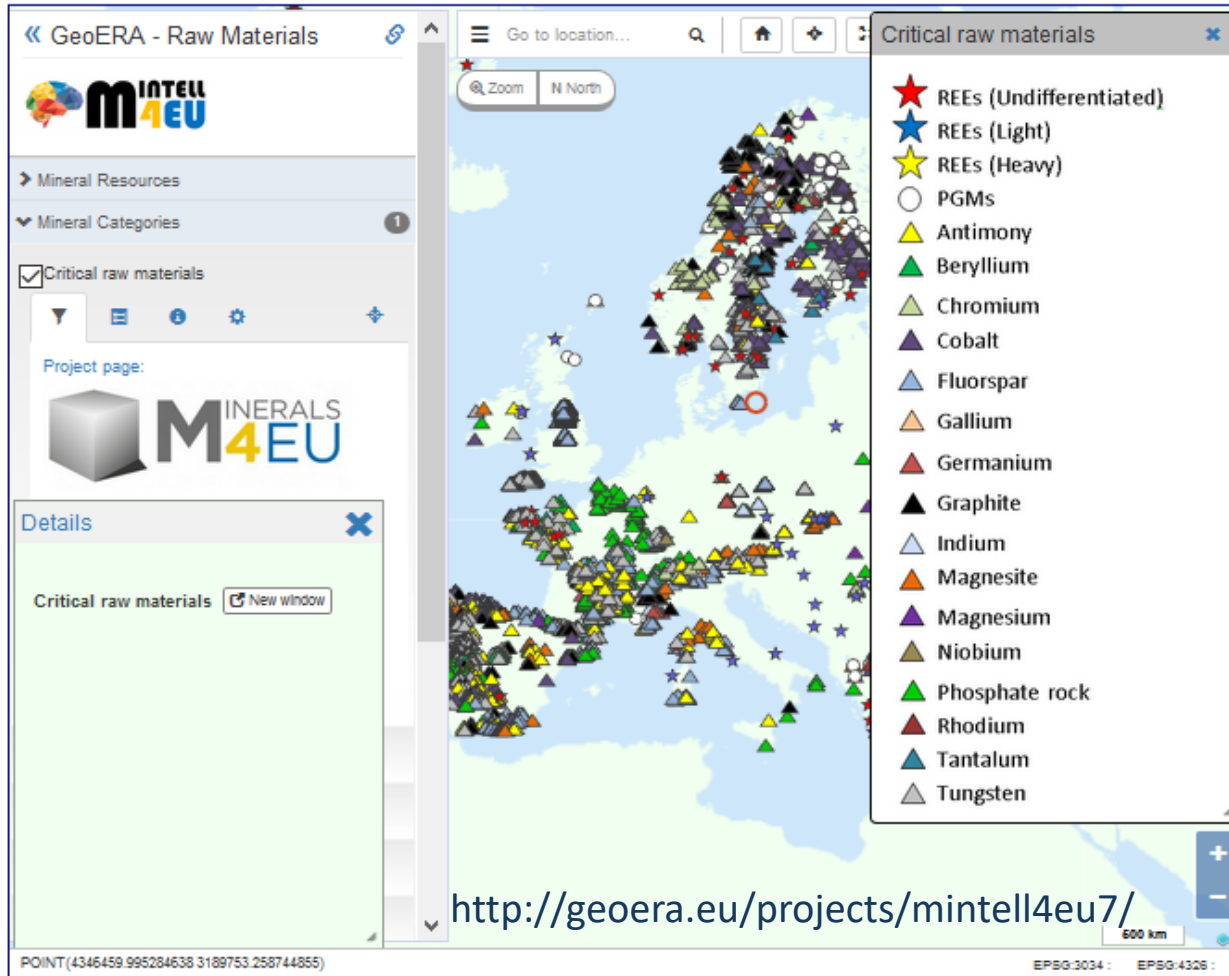
NOTE: Final version of the training materials can be found in Deliverable 4.2 (21 MB)

Examples and training materials for Hungary, Norway, UK



MINTELL4EU: Mineral Intelligence for Europe

Co-ordinator: Geological Survey of Denmark and Greenland (GEUS)



Aims among others:

- Improving the quality and spatial coverage of the Minerals Inventory;
- Testing the application of the UNFC classification system as a tool
- Recommendations for improving integration communication of existing databases and data portals, incl. Raw Materials Information System (RMIS);



CSA-GSE-ICE-UNFC in progress

International Centre of Excellence on Sustainable Resource Management

A collaborative NETWORK within GSE to

promote and build capacity on United Nations Framework Classification for Resources (UNFC) for mineral resources (primary and secondary)

support the United Nations Resource Management System (UNRMS) in line with the UN 2030 Agenda for Sustainable Development

support policy on Resource Management at national and EU level

Baseline assessment

Methodology to fill data gaps and improve dataservice

Guidance for using UNFC in Europe

Development of EGDI with UNFC datasets and UNFC visualisation

Starting the operation of UNFC modul of the EGDI with dissemination and communication

- **Production of data** regarding the location and spatial distribution of **PRMs and SRMs** needs regular updates
- **Operating infrastructure** and network of data providers across Europe, collecting
 - Work on data gaps and harmonizing, disseminating and **safeguarding data**
- Providing **INSPIRE compliance** (updating of INSPIRE code lists with UNFC etc.) still needs to be elaborated.
- **Implementation of UNFC** as a decision making tool in exploiting and assessment of the potentials in mineral resources
- **improve the Knowledge Base** by extending the spatial coverage and quality of data currently in the MIN4EU database in order to efficiently support the objectives of the EU Green Deal
- Update mineral resource assessment information for the **Minerals Inventory**;
- **Increase the degree of harmonization**, communication and interaction between existing data platforms, with the ambition of reaching a fully operational and reliable database, **supporting the European needs and connecting to RMIS of the EU**
- Ensure future sustainability as part of the EuroGeoSurveys-governed **European Geological Data Infrastructure (EGDI)**.
- Search synergies with the **EU International Centre of Excellence on Sustainable Resource Management (UNFC)**
- Strengthening the **network** with and the capability of data providers;
- **Targeted visualization** of data for a correct understanding of the content, interpretation of data

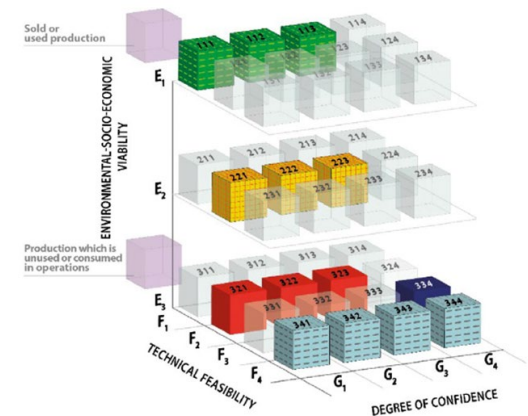


EuroGeoSurveys - The Geological Surveys of Europe

Conclusions

- Favourable time period and historical chance to strengthen co-operation between players for full implementation of the UNFC for PRM and SRM in the frame of new EU CSA – Geological Service for Europe.
- MoU between UNECE and EGS will have a streamlined period based on more experience, case studies and future program planned for 2022-2026.
- EU-projects (ORAMA2020, GEOERA program) dealing not only with minerals but geoenery and groundwater will have stronger co-operation with building the European Geodata Infrastructure in the frame of Geological Service for Europe.
- Data and experience will be interoperable into the Raw Materials Information System (EC JRC) that will allow to compare national/regional and EU-level datasets and in global context as well for decision makings.
- UNFC:
 - is the only classification that can be integrated into a resource management framework
 - is a tool having proper bridging between national and international reporting standards and codes
 - is applicable to various types of resources
 - is full accounting of resource quantities
 - integrates geological data, information on feasibility, economic, environmental-social viability.

„Alea iacta est”





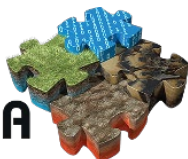
The Geological Surveys of Europe



UNECE



GeoERA



Thank you for your attention

www.eurogeosurveys.org,

www.unece.org,

<https://orama-h2020.eu>

www.mbfsz.gov.hu

40 Years Listening to the Beat of the Earth