

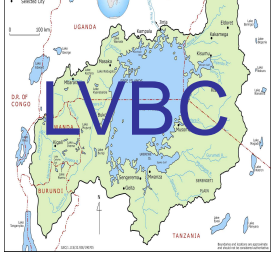
EAST AFRICAN COMMUNITY LAKE VICTORIA BASIN COMMISSION



5TH MEETING OF THE GLOBAL NETWORK OF BASINS WORKING ON CLIMATE CHANGE ADAPTATION

DEVELOPING AND INTEGRATING
TRANSBOUNDARY CLIMATE CHANGE
ADAPTATION INTO BASIN STRATEGIES
AND PLAN: A CASE OF ADAPTING TO
CLIMATE CHANGE IN LAKE VICTORIA
BASIN, FEBRUARY 26TH 2021

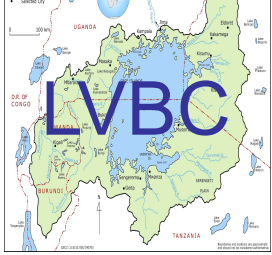
Dr. Ali-Said MATANO
**Executive Secretary, LAKE VICTORIA BASIN
COMMISSION**



DISCUSSION OUTLINE



- A. Overview of the Lake Victoria Basin (LVB)
- B. Observed Climate Change Phenomenon in LVB
- C. LVB Climate Change Strategy and Action Plan
- D. Implementation of the Strategy and Action Plan –
Adapting to Climate Change in LVB Project
- E. Conclusion



OVERVIEW OF THE LAKE VICTORIA BASIN



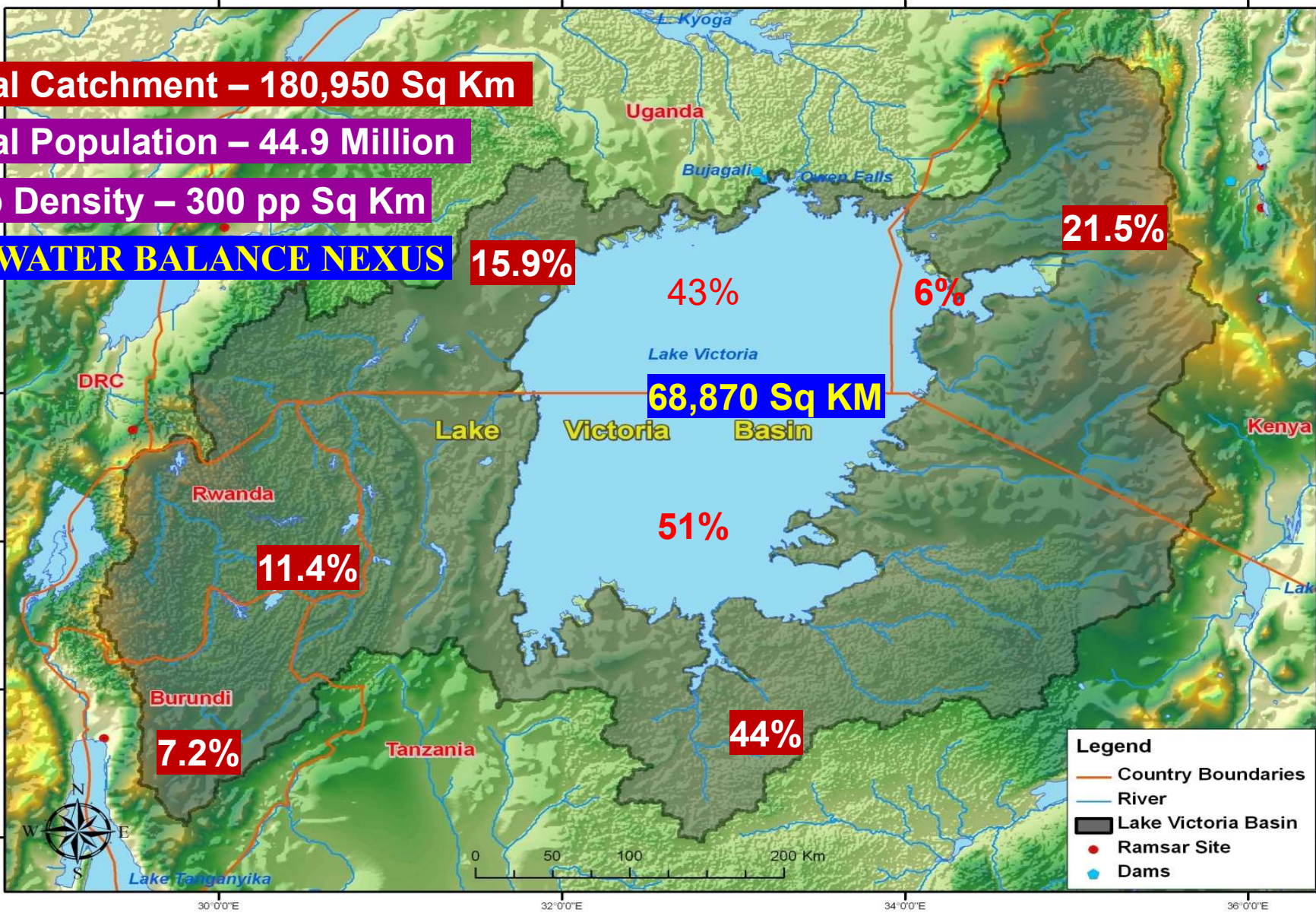


Total Catchment – 180,950 Sq Km

Total Population – 44.9 Million

Pop Density – 300 pp Sq Km

CC-WATER BALANCE NEXUS





LVB THE HEADWATERS OF THE NILE



OBSERVED CLIMATE CHANGE PHENOMENON IN LVB





❑ Observed climate change in the basin

- ✓ Increased variability in rainfall patterns , floods and drought events
- ✓ Mean Annual temperature has increased by approx. 1⁰C between 1950 and 2005

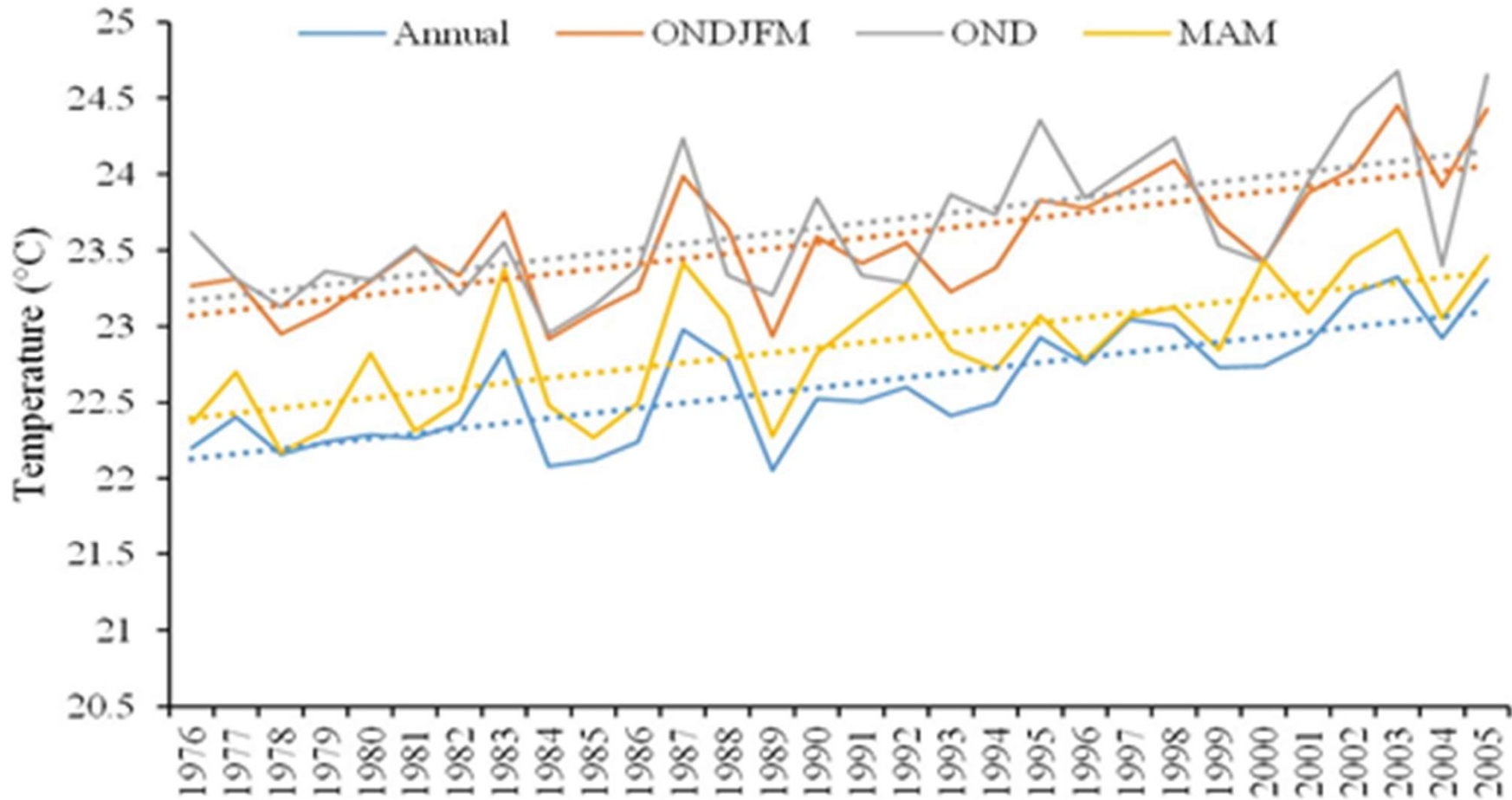
❑ Future climate projections

- ✓ Increased variability in rainfall patterns will continue with annual rainfall generally showing a tendency to increase.
- ✓ By 2100, Mean Annual Temperature is projected to increase by 3–4⁰C.





CHANGES IN TEMPERATURES IN LVB [1976 – 2005]



OBSERVED CLIMATE CHANGE IN LVB CONT/....

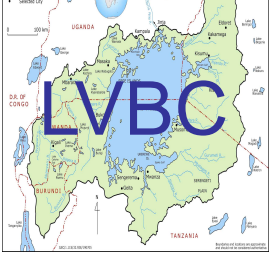
- ✓ Frequent floods
- ✓ Landslides
- ✓ Droughts
- ✓ Rising and declining water levels in LVB
- ✓ Increased prevalence of diseases e.g. waterborne and malaria





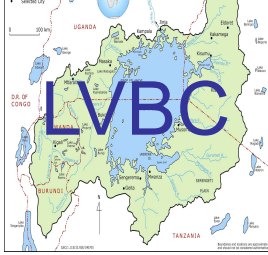
CLIMATE CHANGE ADAPTATION STRATEGY AND ACTION PLAN





- ❑ Developed in response to observed and future climate change impacts LVB :
- ❑ Presents a comprehensive roadmap for addressing climate change impacts in transboundary LVB
- ❑ Focuses on 5 key sectors
 - agriculture and food security;
 - water and aquatic ecosystems;
 - terrestrial ecosystems;
 - health and human settlements; and
 - energy and infrastructure
- ❑ Provides a range of adaptation options and strategies to address vulnerabilities to the impacts of climate change

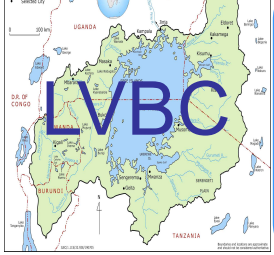




IMPLEMENTATION OF THE STRATEGY AND ACTION PLAN



- ❑ LVBC has developed a transboundary regional project to implement the strategy and action plan.
- ❑ The project titled “**Adapting to climate change in Lake Victoria Basin**” is being implemented in 5 Partner States namely: (Brd, Ken, Rw, Tz & Ug)
- ❑ Funded by AF through UN Environment (UNEP) and executed by LVBC
- ❑ The project aims to increase climate resilience in the LVB at both regional, national and local levels.
- ❑ Supports concrete adaptation interventions , pilot both EbA and CbA technologies in selected climate hotspots in the LVB



EXAMPLES OF INTERVENTIONS UNDER THE PROJECT



Modern fish drying kilns in Burundi

From



To

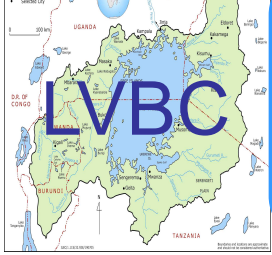




INTERVENTIONS CONT/...

Installed 160 rooftop water harvesting systems and plastered 160 houses in drought prone village of Kirehe District





INTERVENTIONS CONT/...



In collaboration with IGAD-ICPAC, trained 30 experts from Partner States on **downscaling regional climate information to National and Subnational levels**





EXAMPLES OF INTERVENTIONS CONT/.....





CONCLUSION



- ❑ Transboundary water cooperation in LVB has:
 - ✓ assisted to improve adaptation to water-related climate risks by sharing data, capacity building, partnerships and awareness creation.
 - ✓ reduced conflict that are catalyzed by climate change related negative impacts (peace); and
 - ✓ contributed to climate resilience among vulnerable communities, sustainable development and most importantly regional integration [EAC is promoting people centered regional integration].



Thank You

