

DEFINITION & CLASSIFICATION



The UNECE standard applies to inshell walnuts* free from outer husks, of varieties (cultivars) grown from *Juglans regia* L., intended for direct consumption or for food when intended to be mixed with other products for direct consumption without further processing.

It does not apply to inshell walnuts that are processed by salting, sugaring, flavouring, roasting or for industrial processing.

Inshell walnuts are classified into the following **three classes: Extra Class, Class I and Class II.**

The classification is determined in accordance with the defects allowed in the Standard's section "IV, Provisions concerning tolerances".

QUALITY DEFECTS



FREE OF BLEMISHES



MOULD ON SHELL



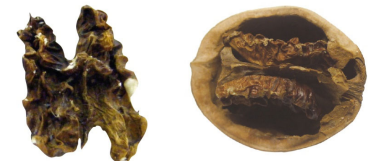
DAMAGED BY PESTS



DAMAGE ON SHELL



DAMAGED SHELL, EXPOSED
KERNEL



NOT SUFFICIENTLY DEVELOPED



INTACT SHELL



BLEMISHES AND DISCOLOURATION



MOULD ON KERNEL



INSECT DAMAGE



ADHERING HULL / HUSK



MEASURING STAINS