



Informal document **GRVA-08-23**  
8th GRVA, 14-16 December 2020  
Agenda item 4(a)



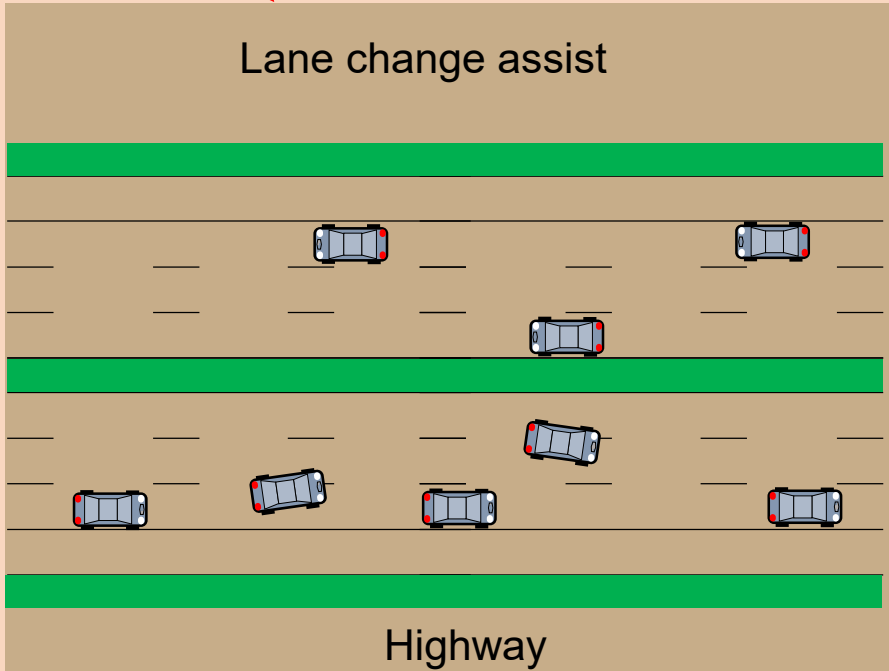
# Overview and further steps on ADASS features

## UN R79 Limitations

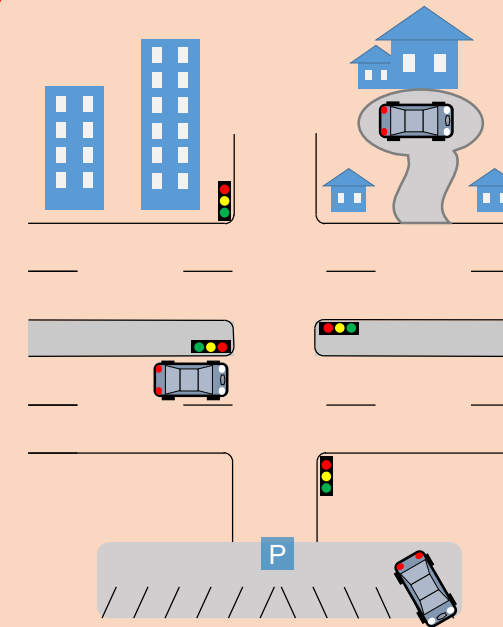
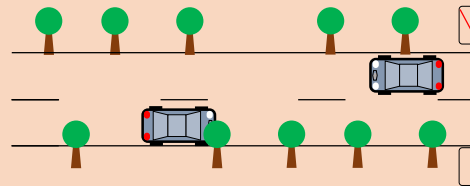
Lane keeping (B1)  
Low speed or parking manoeuvring (incl. remote control)  
Corrective steering  
Emergency steering

Limited domain

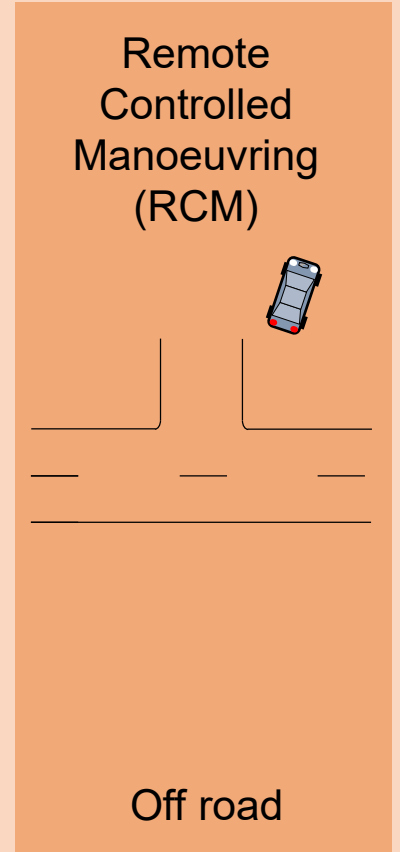
Lane change assist



Restricted functionalities / performance



Remote Controlled Manoeuvring (RCM)



The  
**MOTIVATION**

is to

**WORK ON THE CURRENT LIMITATIONS**

of UN R79, with regard to the

**DEVELOPMENT OF FUTURE OR EXISTING ADASS**

*Today*

**Functions regulated in R79**

<p><b>Emergency steering</b> (in the lane)</p>	<p><b>Low speed or parking manoeuvring</b> (incl. remote control)</p>	<p><b>Corrective steering</b> (stability, correct lane departure)</p>	<p><b>Lane change</b> (with markings, hands-on)</p>	<p><b>Lane keeping</b> (hands-on, 3m/s<sup>2</sup> lat accel...)</p>
--	---	---	---	--

*“Tomorrow”*

**Existing proposals for R79**

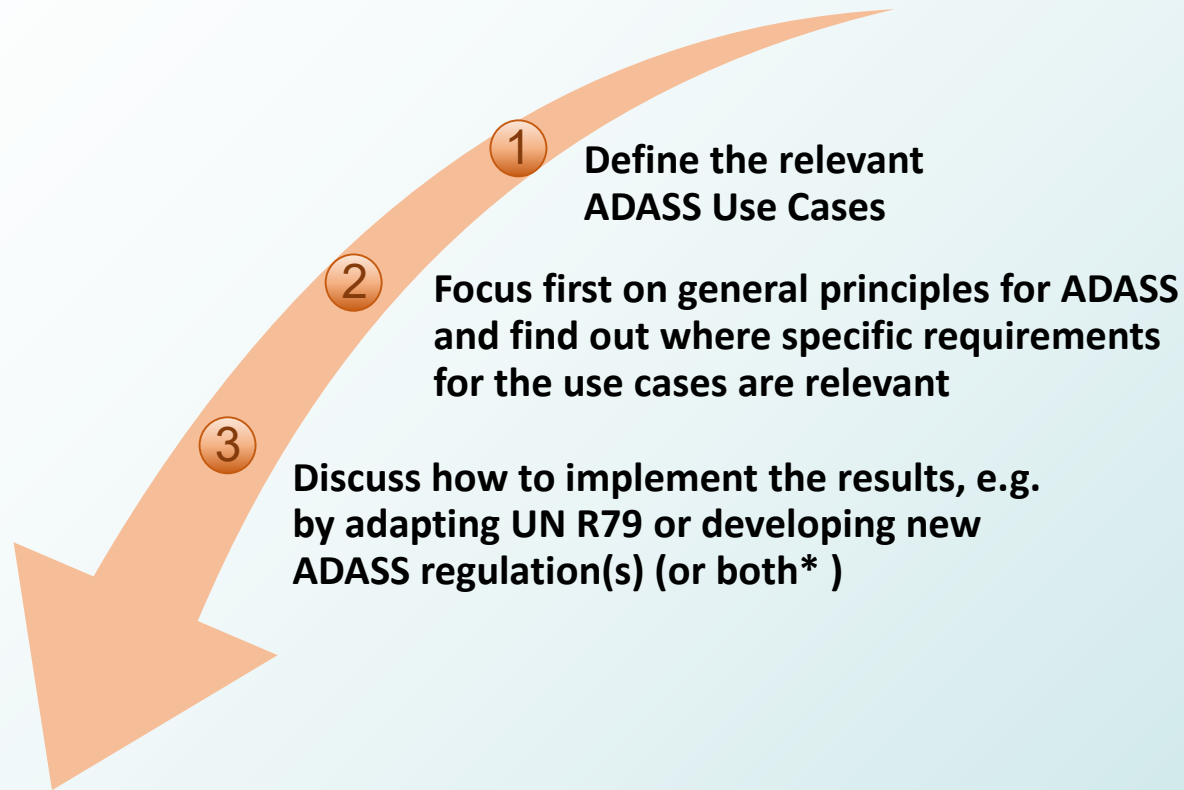
<p><b>Lane keeping hands-off</b> <i>GRVA-07-23</i></p>	<p><b>Risk Mitigation Function (RMF)</b> <i>GRVA/2021/13</i></p>	<p><b>New HMI for Remote control parking</b> <i>GRVA/2021/12</i></p>	<p><b>Emergency steering w/o markings</b> (Manoeuvring Assist) <i>GRVA/2021/08</i></p>
--	--	--	--

*“Next week”*

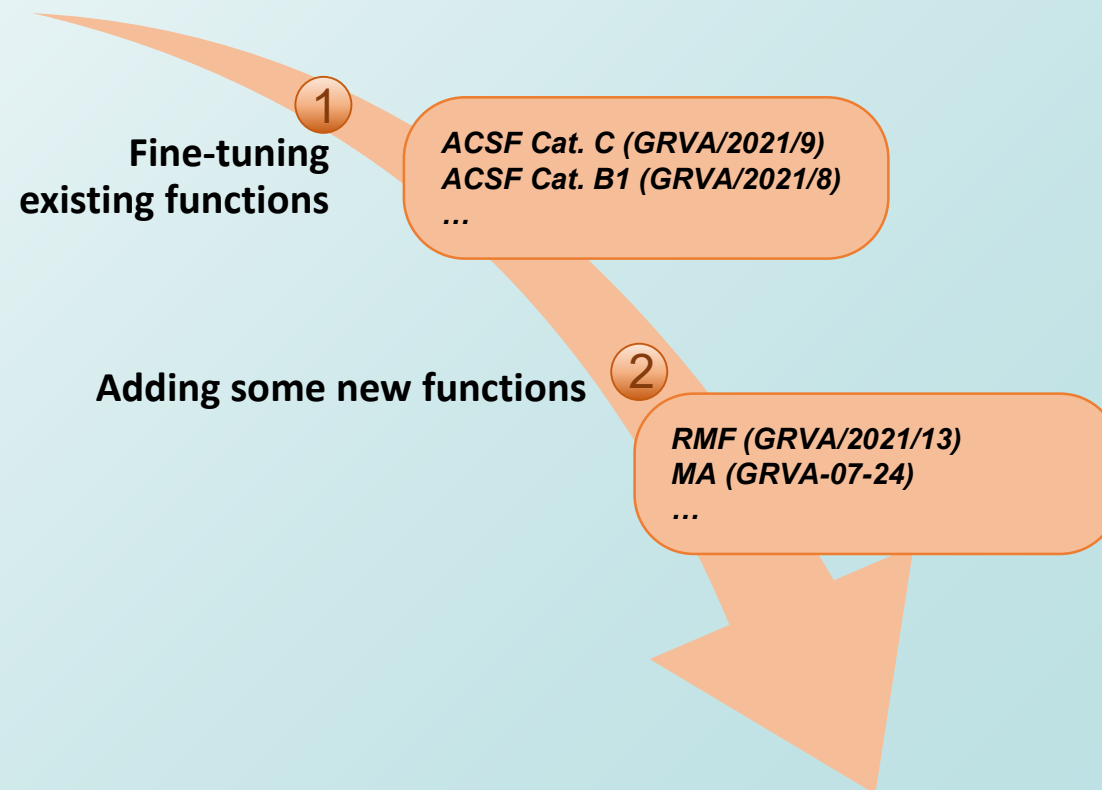
**Any manoeuver may potentially be assisted, e.g...**

Emergency steering by crossing markings / leaving the lane	Reverse assistance with trailer	System initiated lane change	Turning at an intersection	Entering a fork or highway	Hands-off, Eyes-on	Roundabouts	...
--	---------------------------------	------------------------------	----------------------------	----------------------------	--------------------	-------------	-----

## Define a new approach



## Adapt UN R79 for:



\*/ some functions may remain in R79, while some others may be transferred into a new regulation

**Thank you**