



SDGs to Improve Quality of Life in Informal Settlements

Bishkek Program for Ak-Bosogo, Archa-Beshik, Bakai-Ata, Kalis Ordo and Rukhiy Muras

UNECE webinar to start-up Bishkek Program _ 15 May 2020

Pedro Neves

UNECE Consultant

Global Solutions Founder and Managing Partner

E-mail: pedroneves@globalsolutions4u.com

Mobile: +351 962 980 725

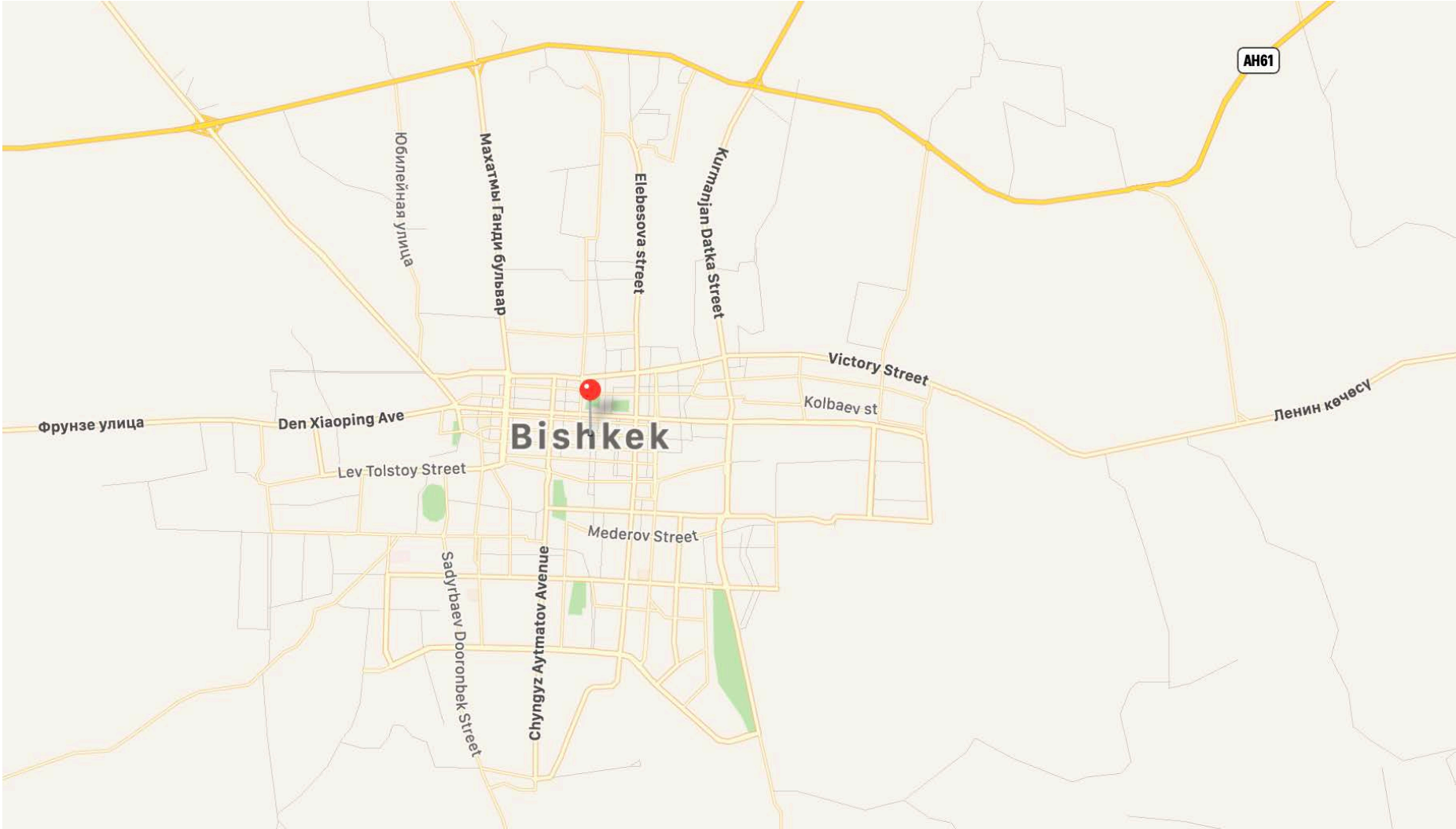


Index

1. Presentation of teams with areas of speciality
2. Description of current challenges in Bakai-Ata; Ak-Bosogo; Kalis Ordo (Program Manager)
3. Presentation of tool box
4. Presentation of case study
5. Presentation and discussion of draft organization chart
6. Next steps, Pipeline of Projects, Deliveries and Timings

please provide economic activities locations in the Bishkek Metropolitan Area – eventually logistic parks involving the Silk Road





SDGs to Improve Quality of Life in Informal Settlements_ Pedro Neves May 2020



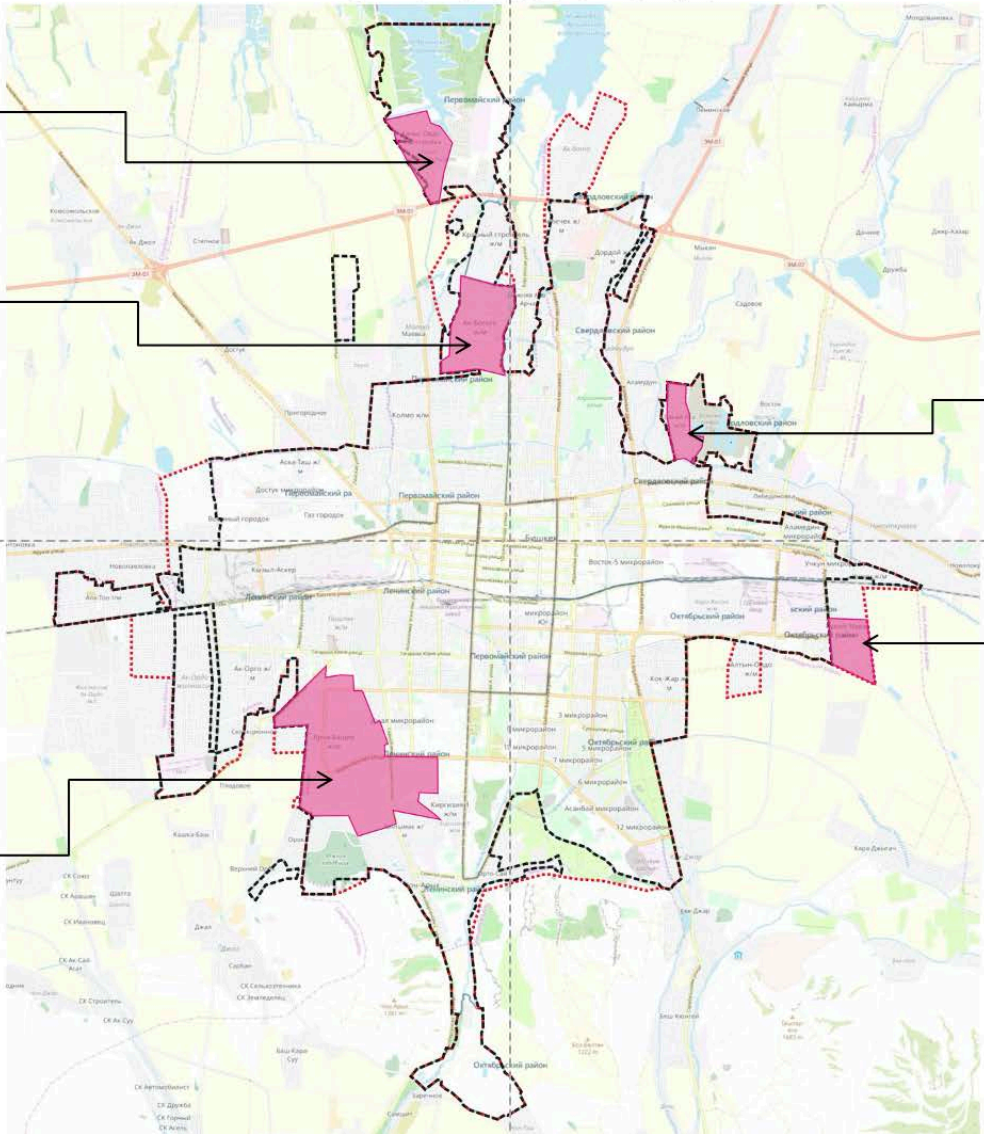


Residential areas in the informal settlements in Bishkek



Kyrgyz State University of Construction, Transport and Architecture. Department of Urban Planning 2020

Bishkek situation chart



- 1. Ak-Bosogo -316,5ha;
- 2. Archa-Beshik - 1050,0ha;
- 3. Baktai-Ata -104,0ra;
- 4. Kalys-Ordo -135,0ha;
- 5. Rukhi Muras -50ha.



Information on the residential areas Key Figures “Bakai-Ata _ Ak-Bosogo _ Kalis Ordo _ Archa-Beshik” in Bishkek



New Settlements (New Towns)	Bakai-Ata	Ak-Bosogo	Kalis Ordo	Archa-Beshik	Rukhiy-Muras (not available)	total
Foundation	1989	1990	2005	1992		
Area (Ha)	104,0	316,5	135,0	1 050,0		1 605,5
Population	6 564	22 819	12 597	43 438		85 418
adults	5 228	17 089	9 513	36 214		68 044
children 0-7	587	2 230	1 384	3 015		7 216
children 7-17	749	3 500	1 700	4 209		10 158
Mobility						
Roads (m)	21 015	53 424	23 048	85 078		182 565
Asphalted roads (m)	3 480	4 080	5 400	15 898		28 858
Non asphalted roads (m)	17 535	49 344	17 648	69 180		153 707
Number of street lights	420	280	225	238		1 163
Number of streets and alleyways	47	74	43	112		276
Paid and free parking		1				1
Utilities						
Water network (m)	21 015	21 279	16 500	8 850		67 644
Sewage network	-	8 441	-	-		8 441
Water extraction facilities	1	2	1	1		5
Substation transformers	22	23	8	131		184
Coal (%) power stations ?	100	100	100	100		400
Irrigation networks (m)	1113	4400	0	38283		43 796

Information on the residential areas Key Figures “Bakai-Ata _ Ak-Bosogo _ Kalis Ordo _ Archa-Beshik” in Bishkek



Social Infrastructure & Public Space

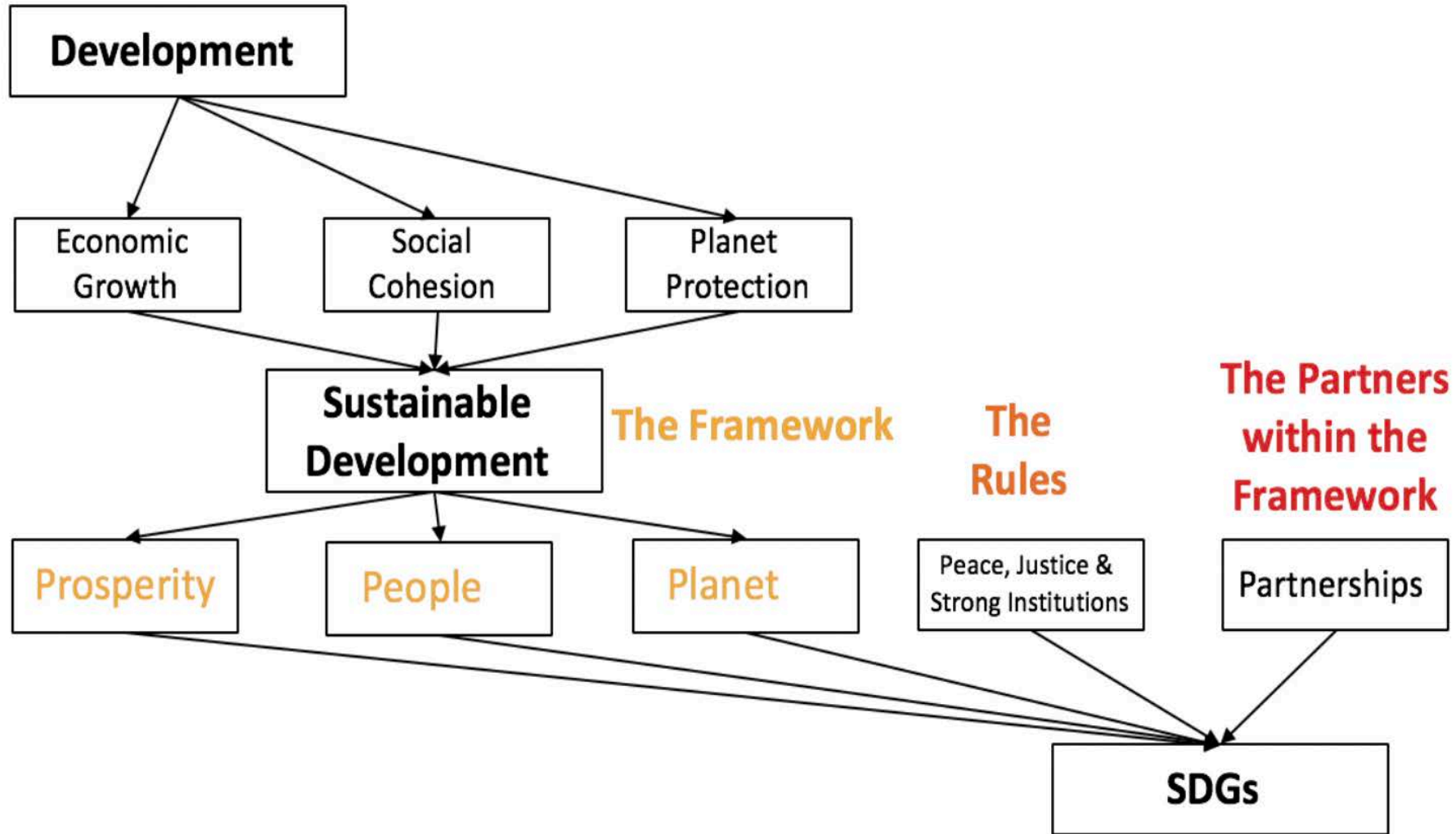
Pre School (public and private)	1	1	2	13	17
Comprehensive Schools		1	1	4	6
Family medicine centres and clinics	1	1	1	2	5
Dentists (private)				5	5
Pharmacies	1	3	2	4	10
Post Office	1				1
Police Stations	1	1	1	1	4
Social Prevention Centre				1	1
CCTV cameras				7	7
Libraries	1				1
Religious facilities (Mosques-Namazkana-Madrasas))	1	7	2	13	23
Parks and Squares		2	1	1	4
Trees	305	0	0	3000	3 305
Playgrounds	5	9	5	16	35
Football fields	1	2			3
Sports grounds		1	1	1	3
Gyms				3	3

Information on the residential areas Key Figures “Bakai-Ata _ Ak-Bosogo _ Kalis Ordo _ Archa-Beshik” in Bishkek

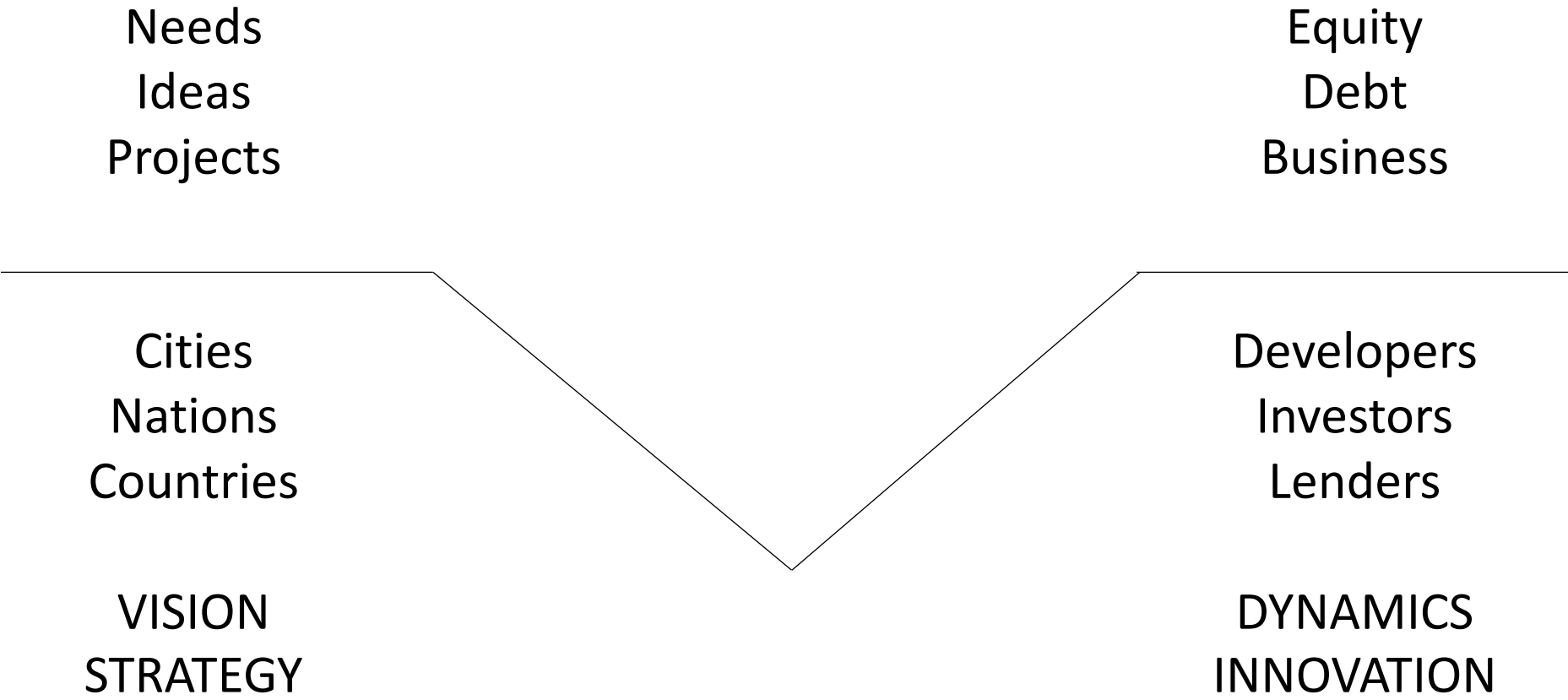


Real Estate

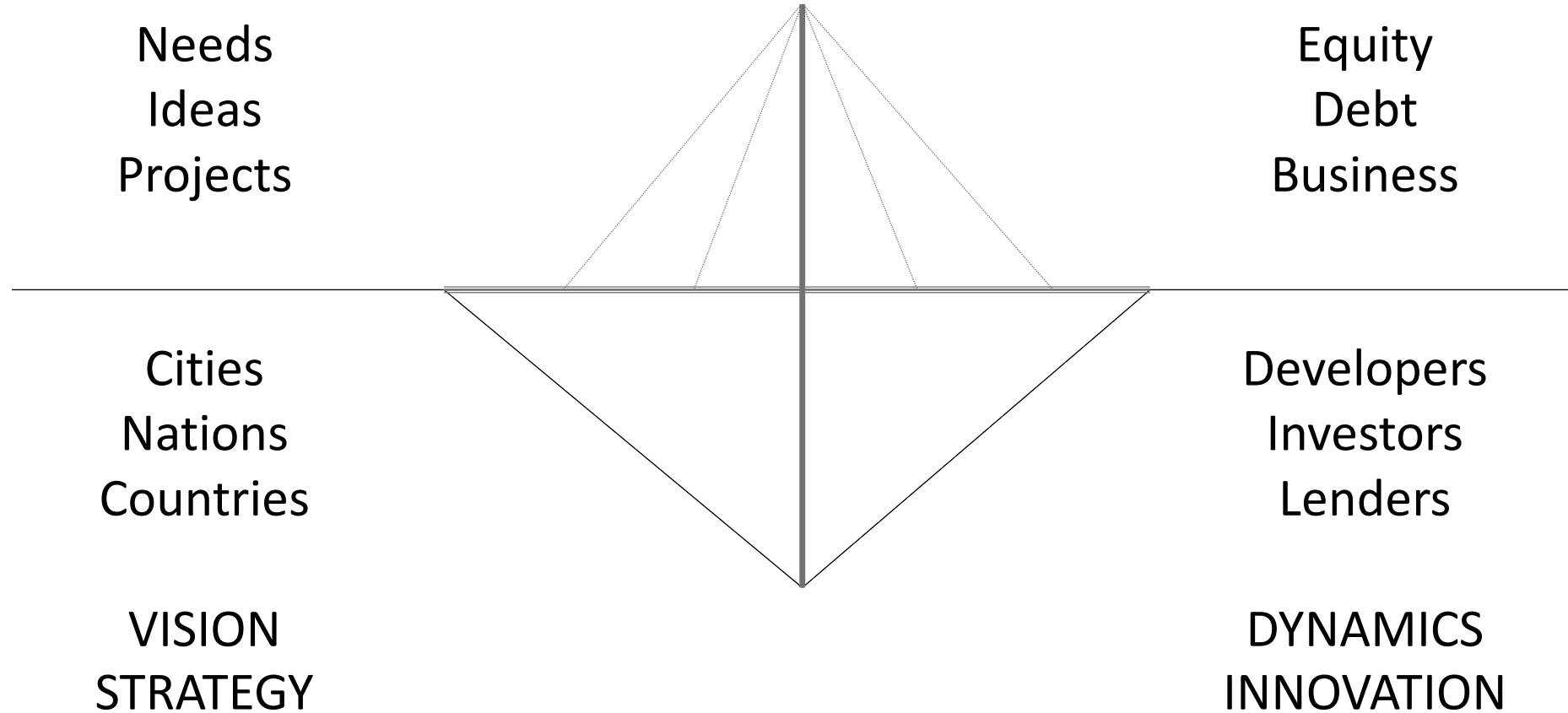
Individual residential buildings	1148	3513	1945	8701	15 307
Multi apartment buildings	3	11	7		21
Outlets and shops	29	103	54	239	425
Bathhouses	11	6	6	13	36
Workshops confectionary, furniture, sewing	1	43	2		46
Hairdresser and beauty saloons	4		2	18	24
Canteens	1			21	22
Aksakai courts (?)	1	1			2
Stalls and kiosks				37	37
Service Station		11	2	10	23
Kebab shops and bakeries		5	1	9	15
Car washes		2		10	12
Computer clubs and internet services				3	3
Repair shops for household objects and shoes		1		4	5
Shopping Centre				1	1
Hotels				1	1
Billiard Clubs				1	1
Petrol Stations				2	2
Markets and mini markets				1	1
Studios for clothing repairs				7	7
Cafes				15	15
Recreation centres				1	1

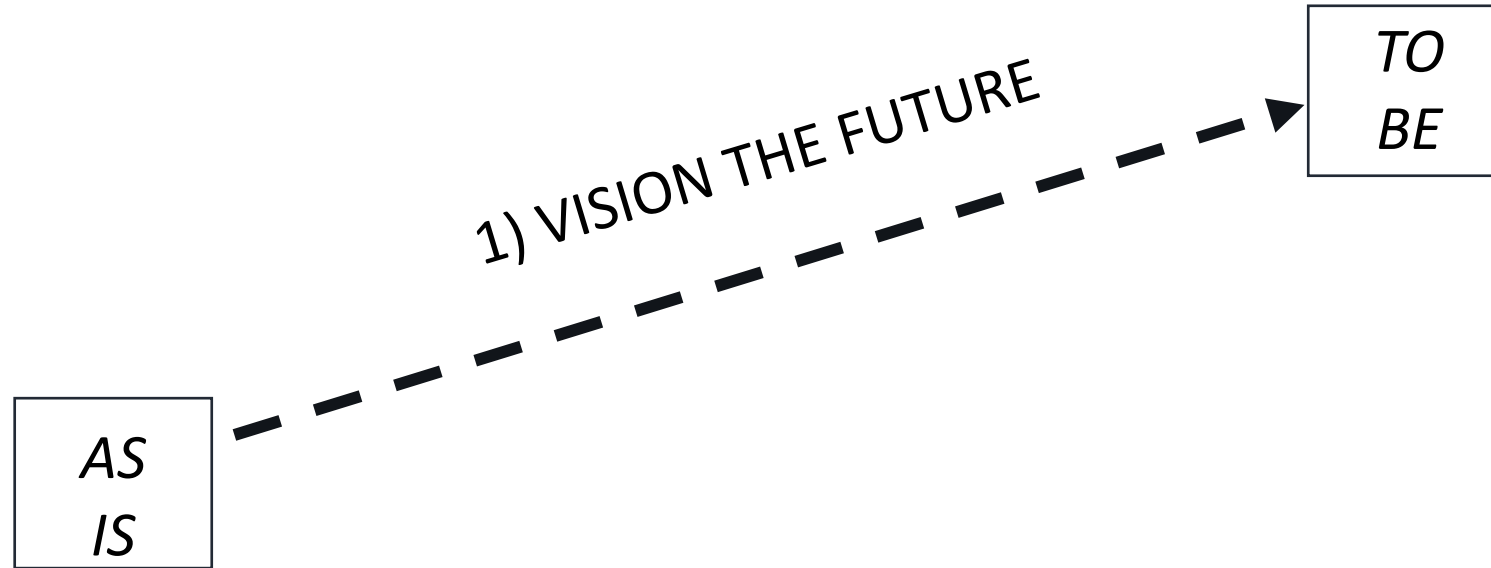


Tool 2 _ Bridging the Funding Gap Applying the Language of SDG Development Framework

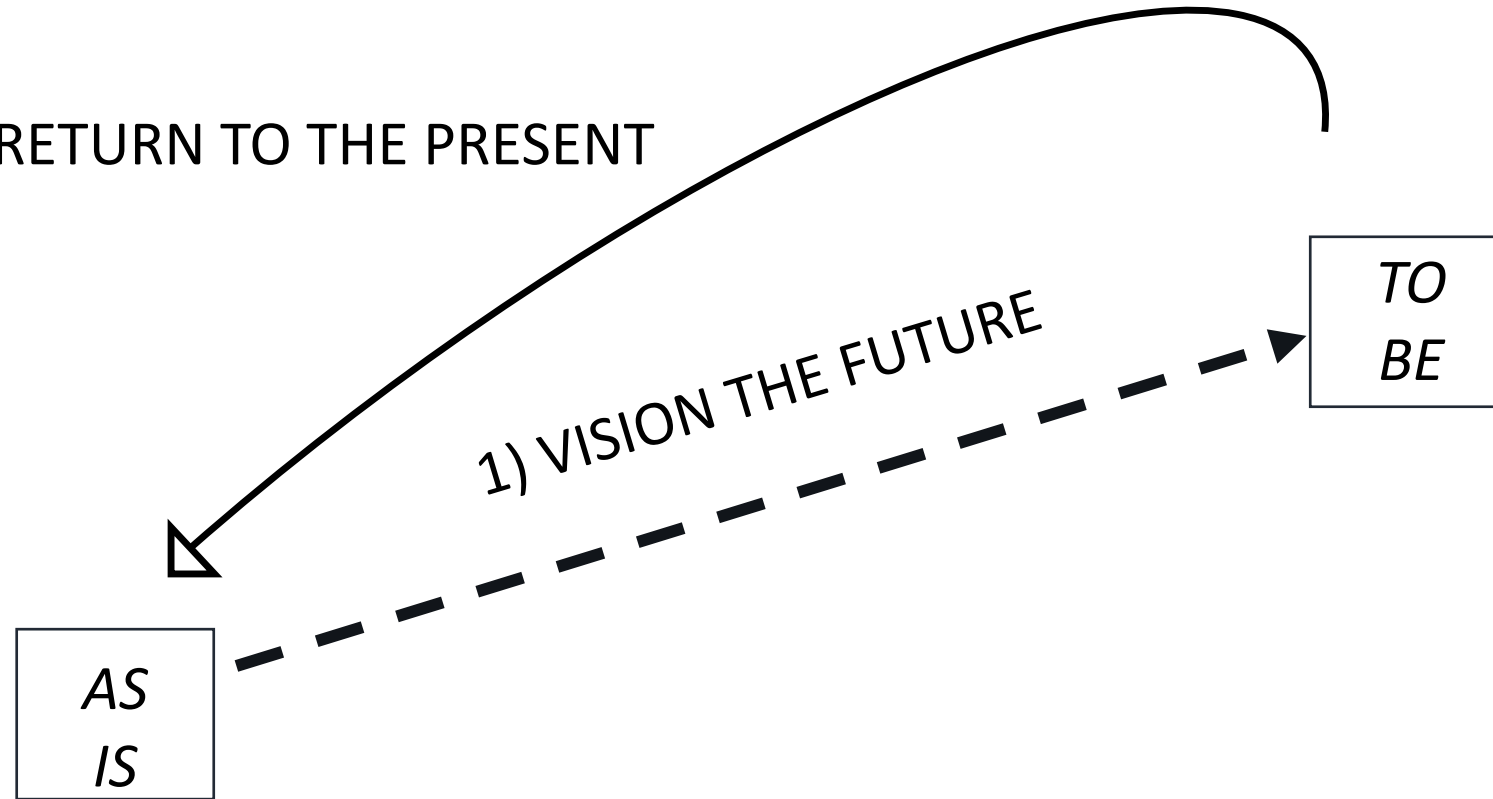


Tool 2 _ Bridging the Funding Gap Applying the Language of SDG Development Framework





2) RETURN TO THE PRESENT



2) RETURN TO THE PRESENT

1) VISION THE FUTURE

AS
IS

TO
BE



3) DEFINE PRIORITIES

Implement strategies to achieve the SDGs

PIPELINE OF INVESTABLE PROJECTS

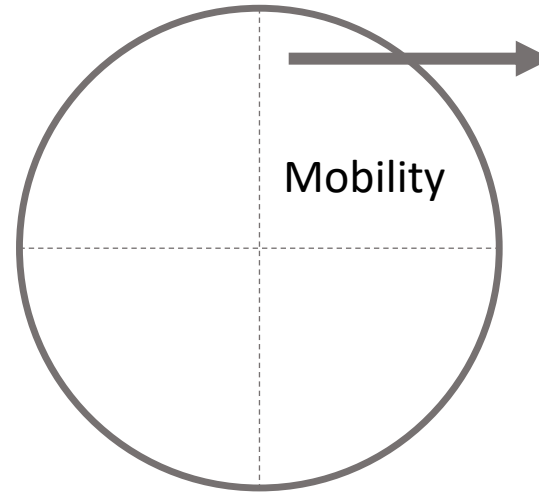
- #2 _ agriculture
- #3 _ health / #4 _ education
- #6 _ water / #7 _ energy
- #9 _ mobility
- #11 _ cities _ real estate
- #12 _ industry



Tool 4 _ Four Types of Urban Development Projects (4-season pizza)



4 Season Pizza



Mobility

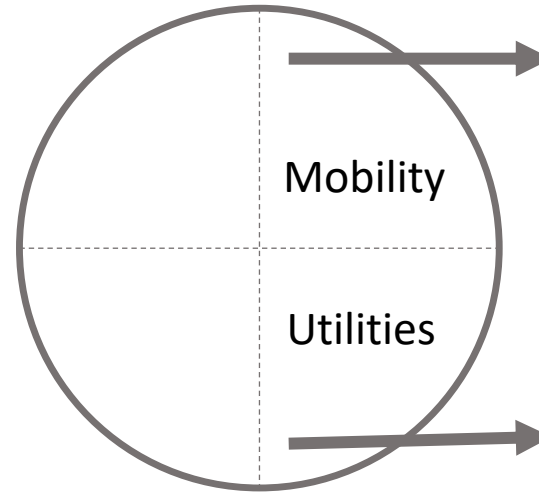
- roads
- rail
- airport
- port



Tool 4 _ Four Types of Urban Development Projects (4-season pizza)



4 Season Pizza



Mobility

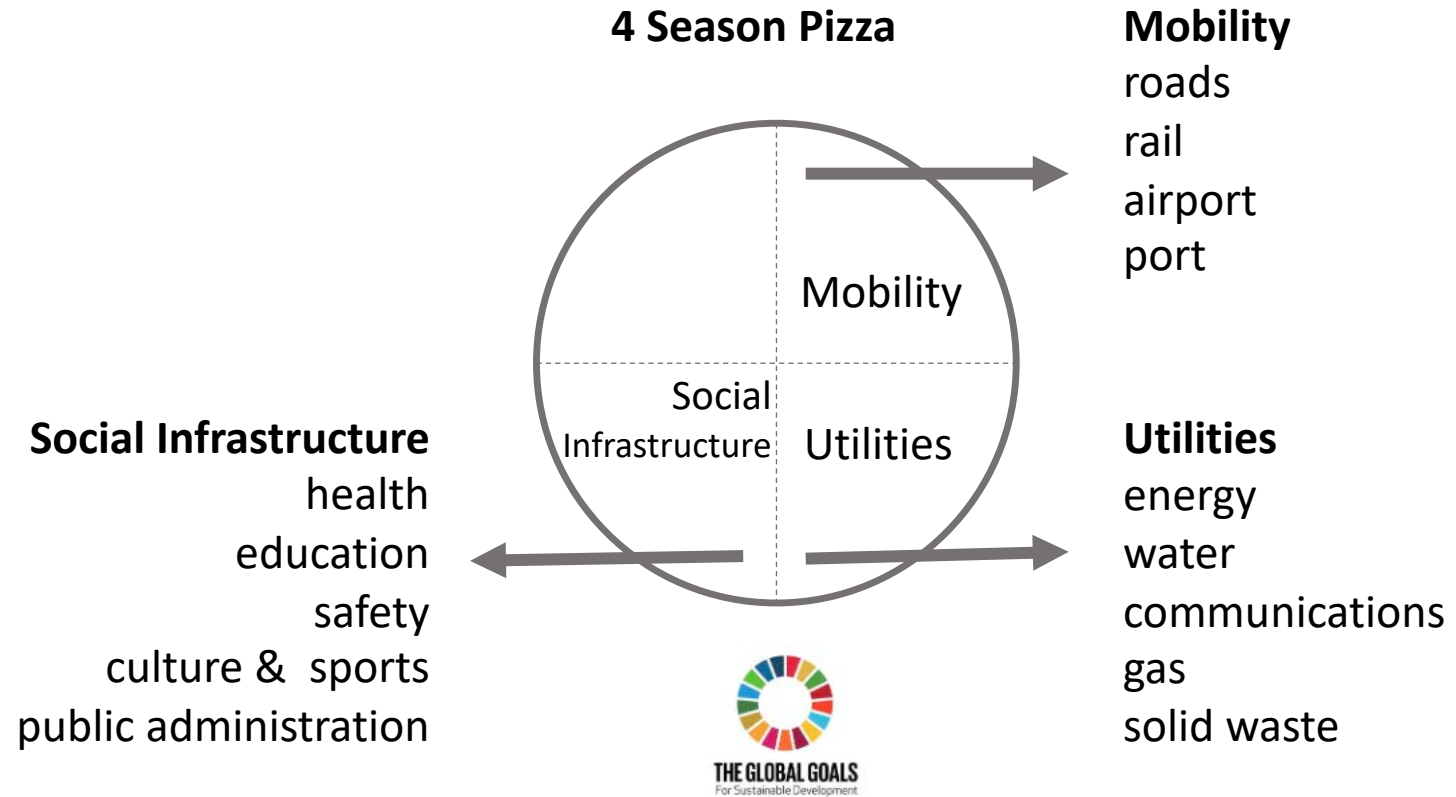
- roads
- rail
- airport
- port

Utilities

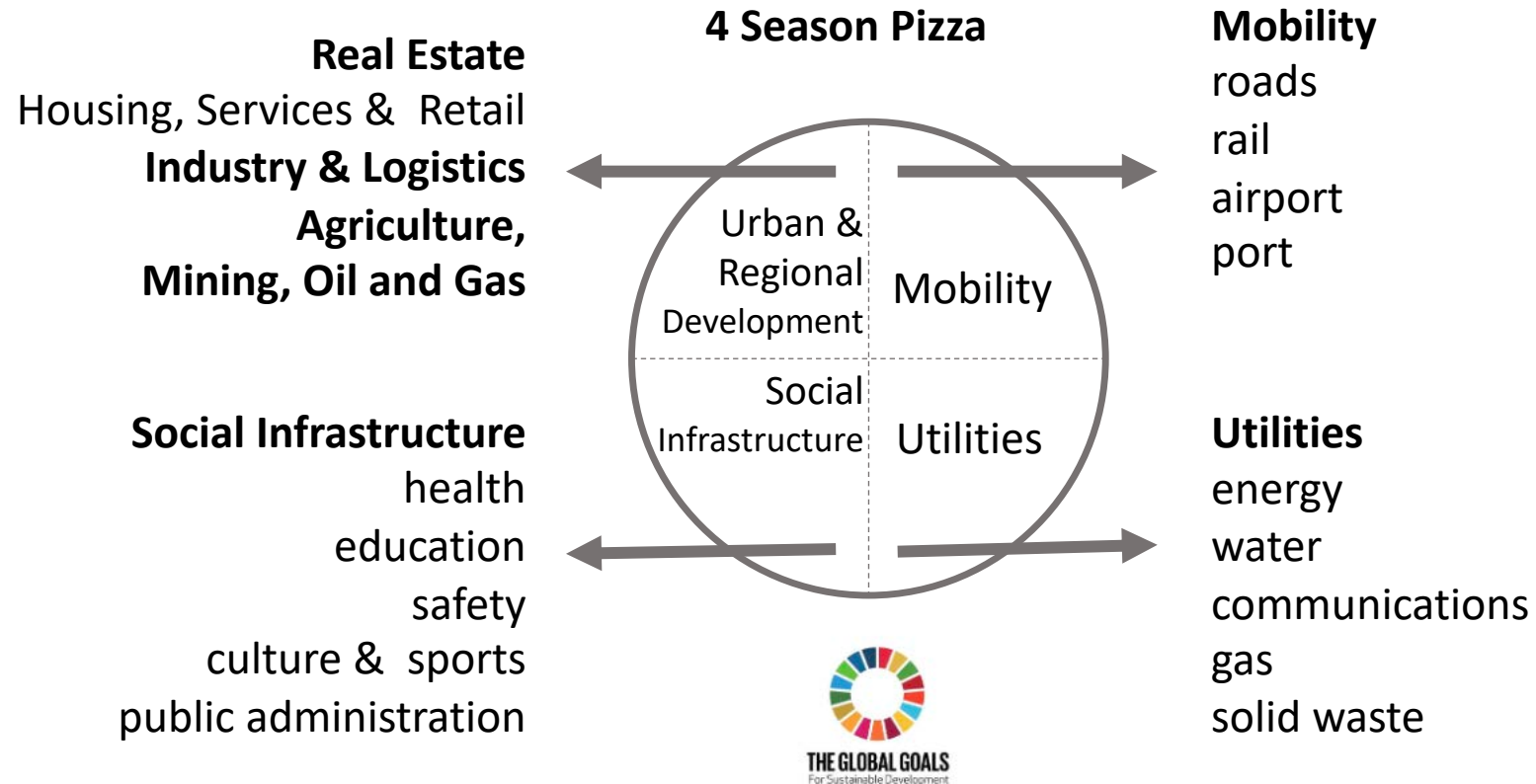
- energy
- water
- communications
- gas
- solid waste

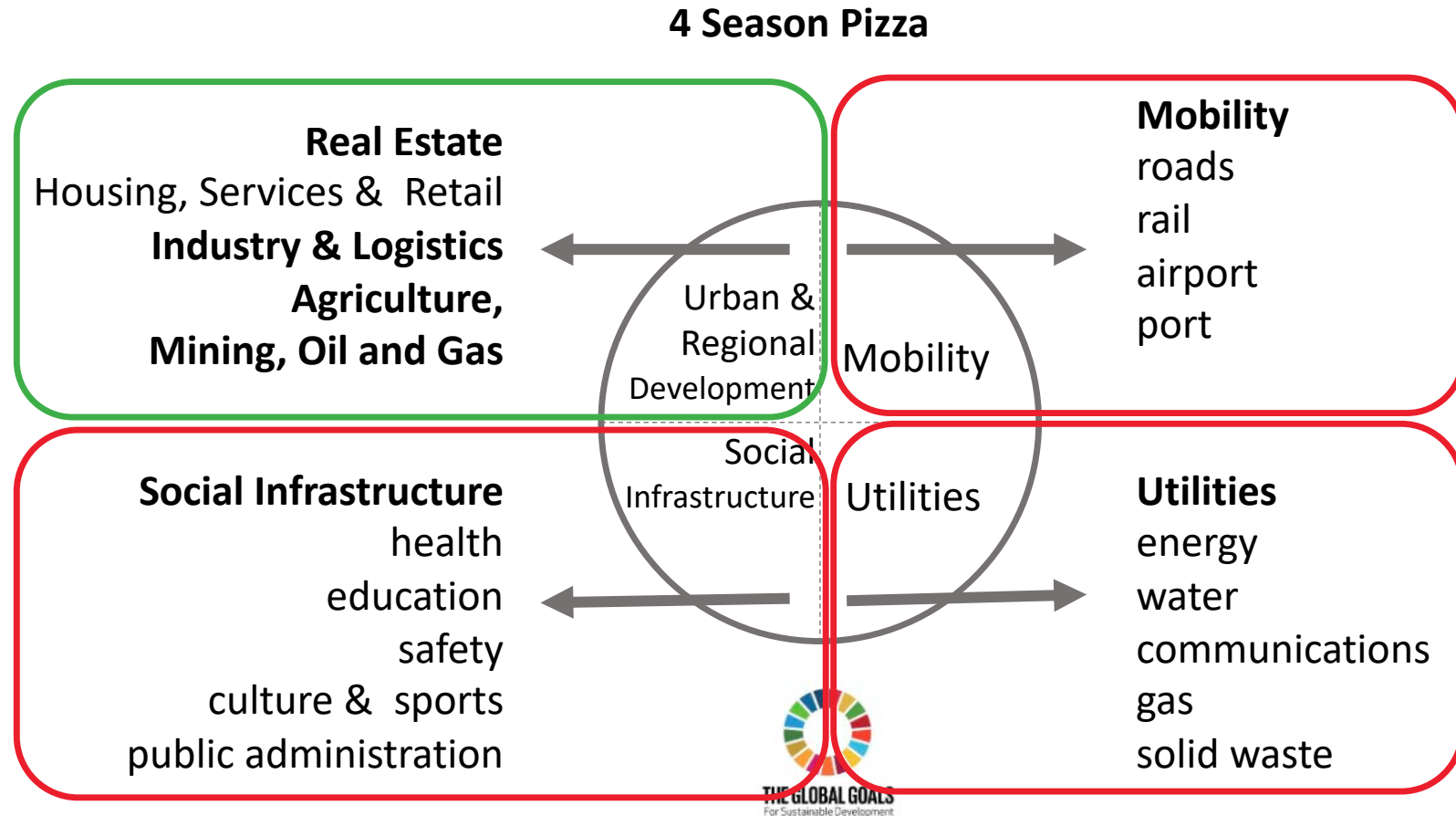


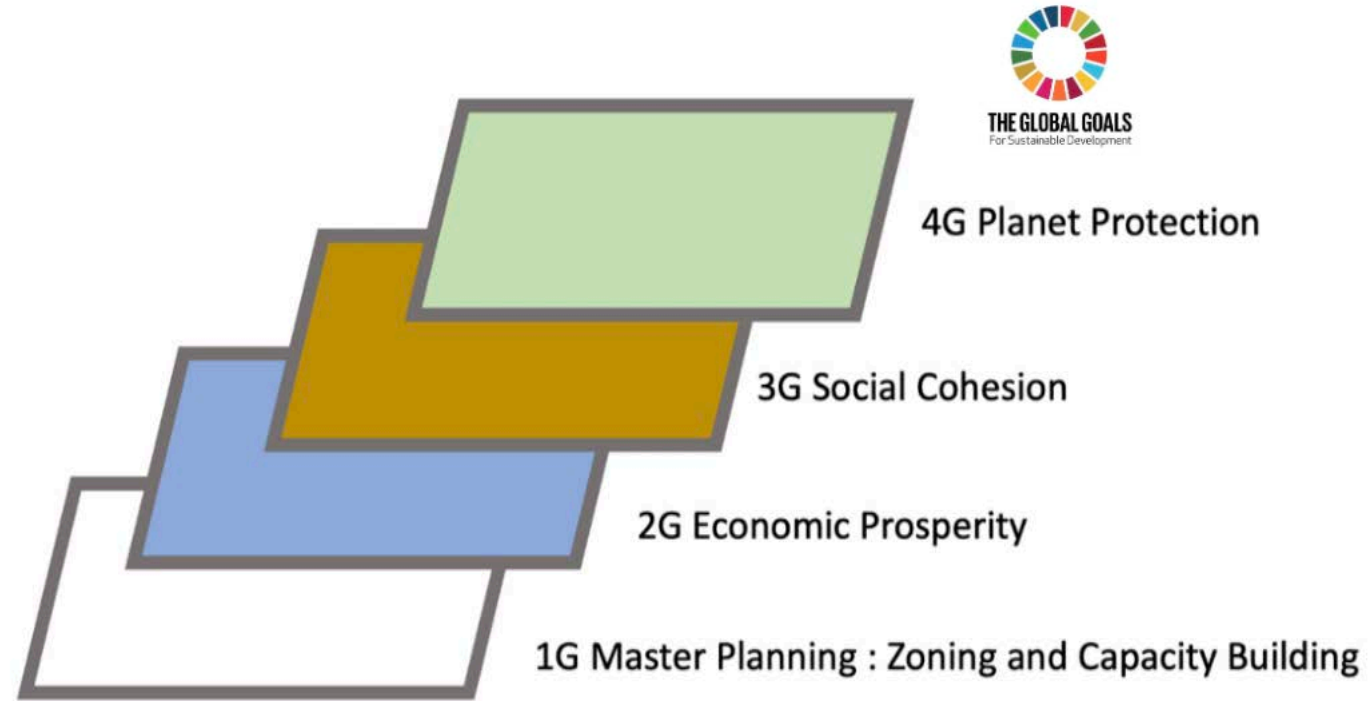
Tool 4 _ Four Types of Urban Development Projects (4-season pizza)

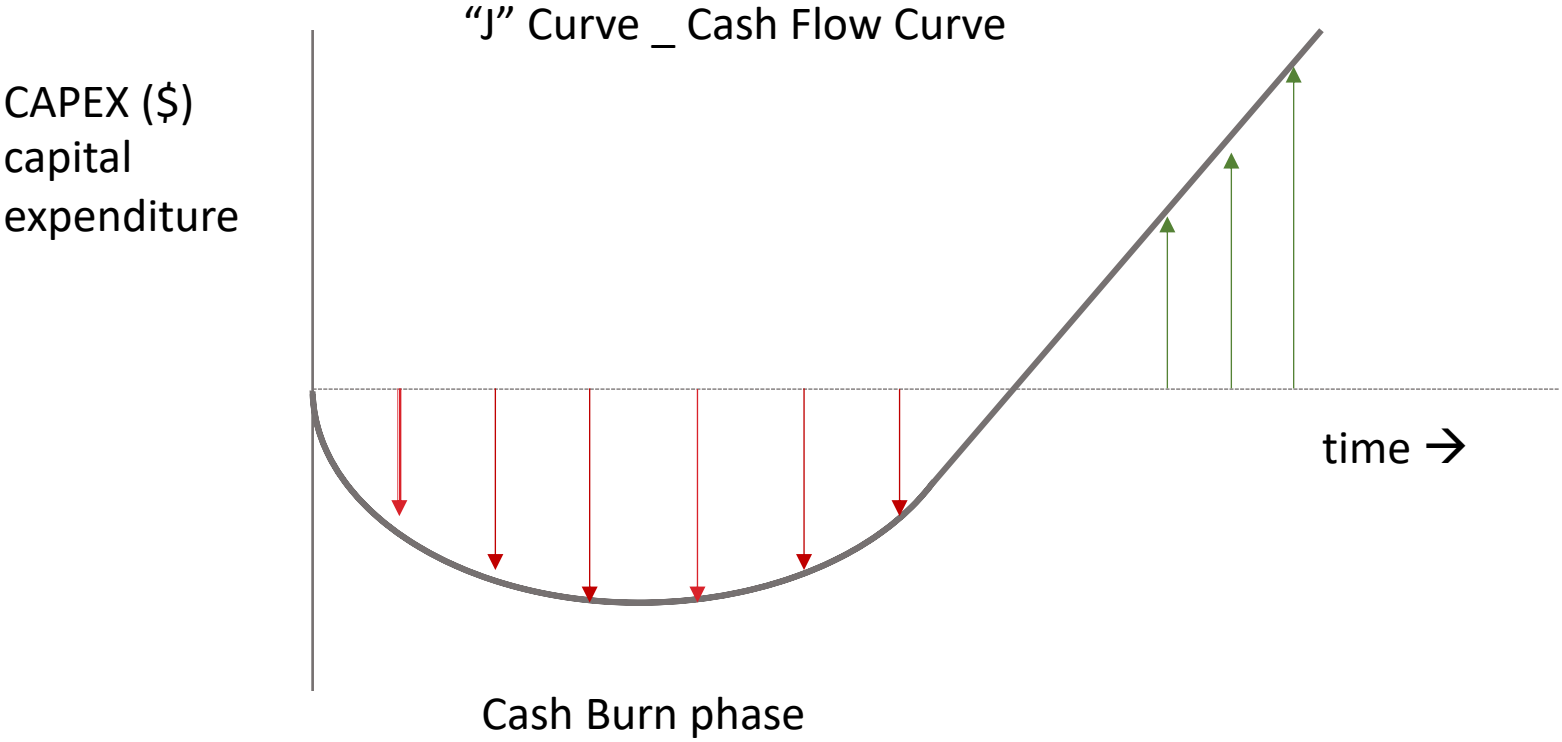


Tool 4 _ Four Types of Urban Development Projects (4-season pizza)









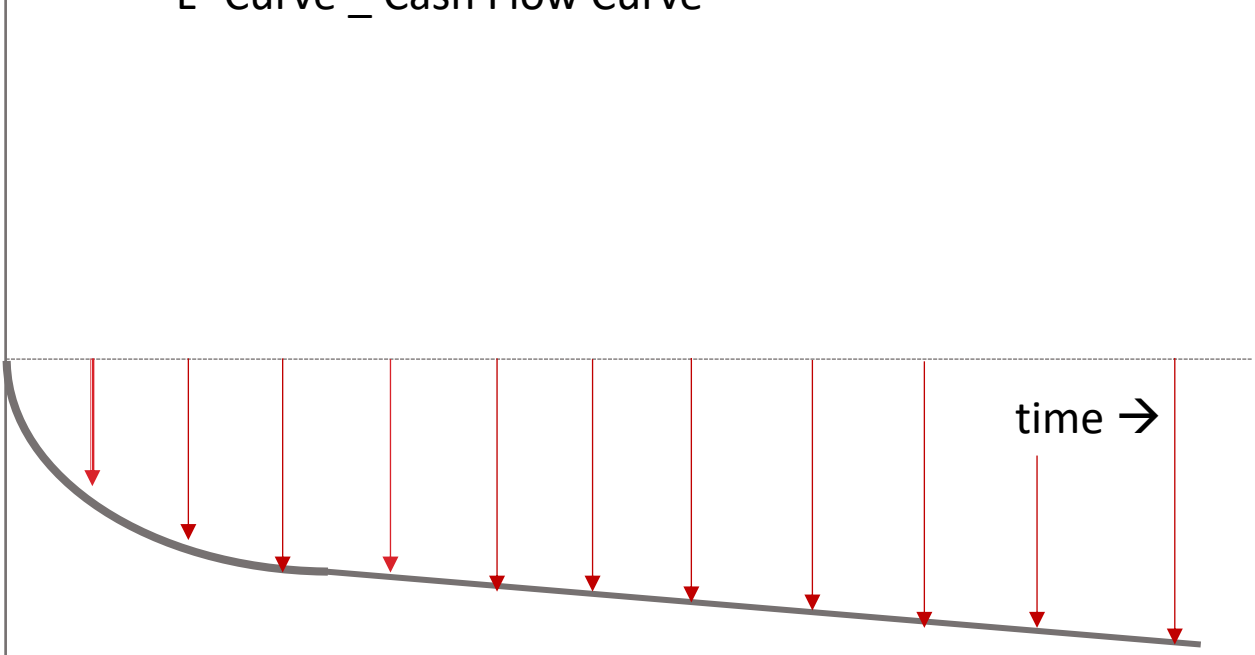
Cash Positive Projects
 After Cash Burn produce Positive Cash Flow





CAPEX (\$) capital expenditure

"L" Curve _ Cash Flow Curve



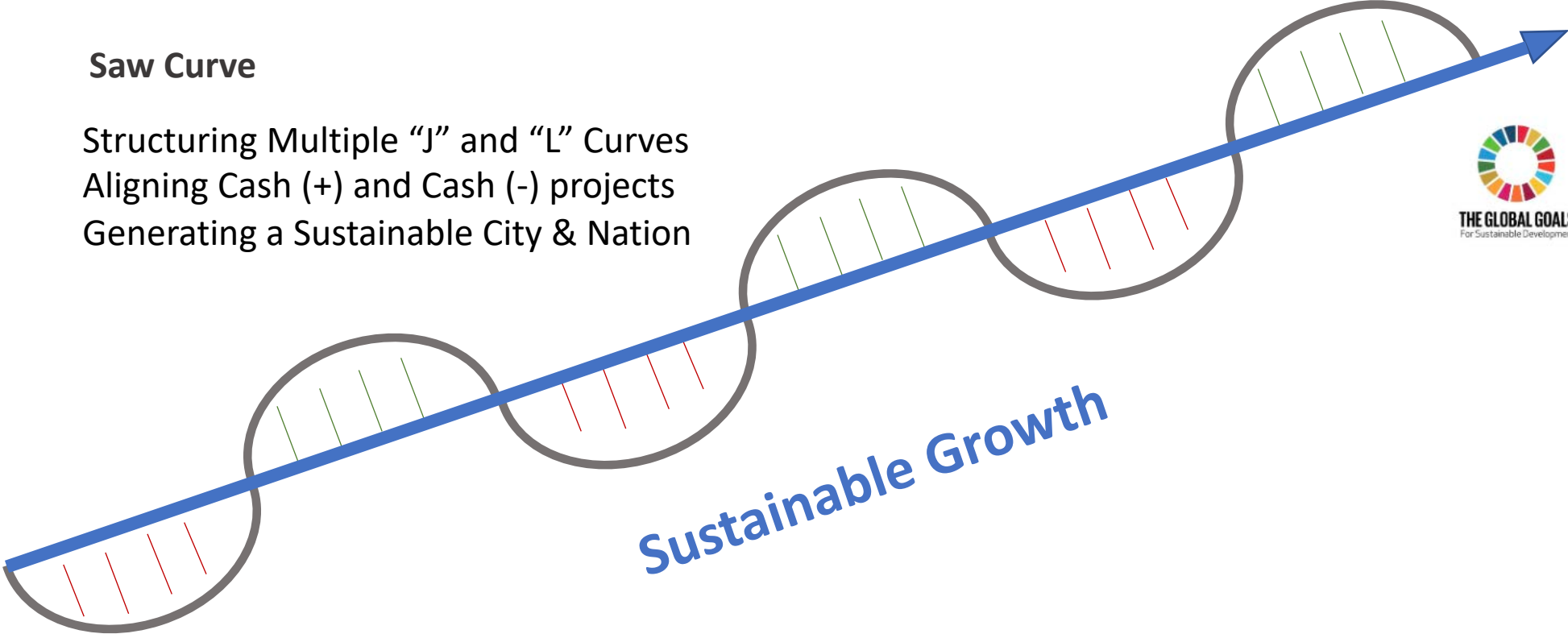
Cash Burn phase

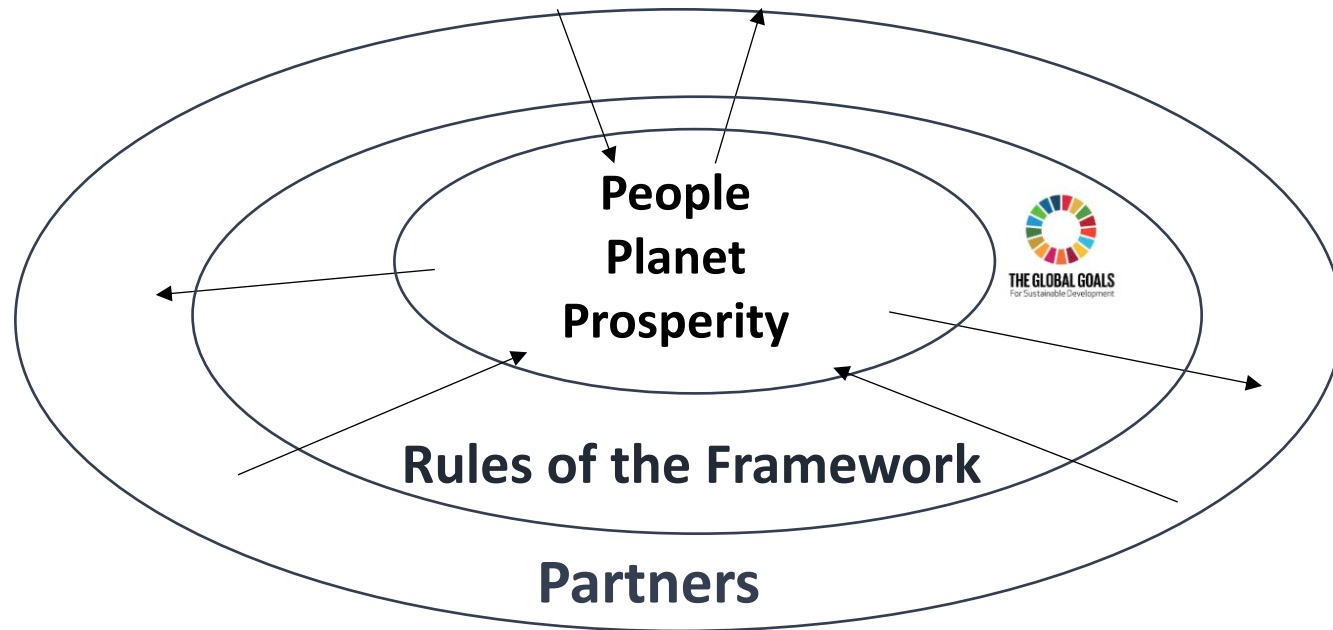
Cash Negative Projects
After Cash Burn do not produce Positive Cash Flow



Saw Curve

Structuring Multiple "J" and "L" Curves
Aligning Cash (+) and Cash (-) projects
Generating a Sustainable City & Nation



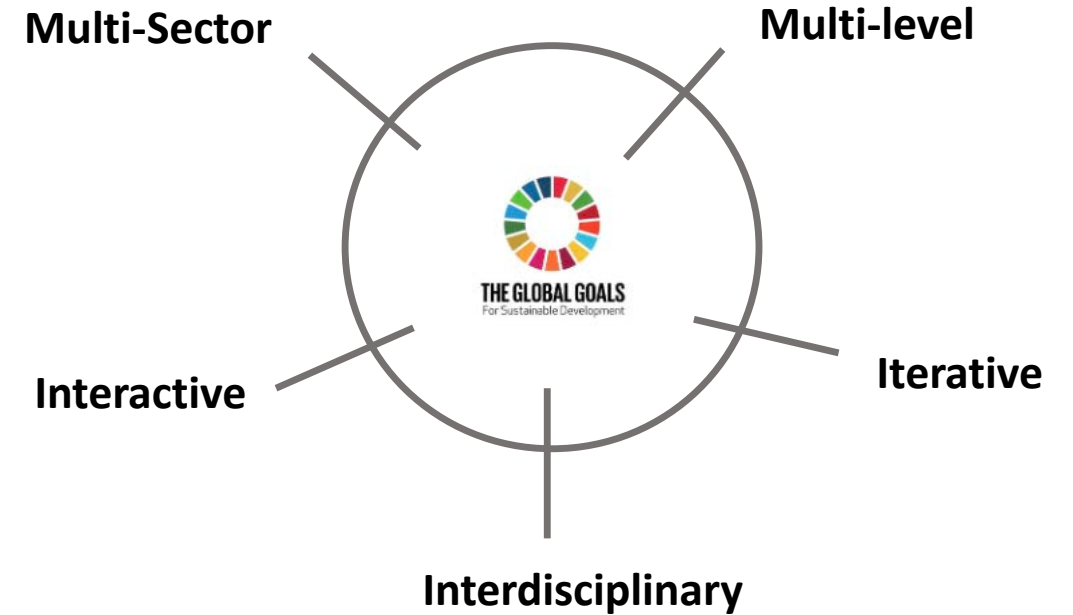


Clear operational framework with transparent rules attracts reliable partners

Reliable partners, operating under transparent rules, contribute to the clear operational framework

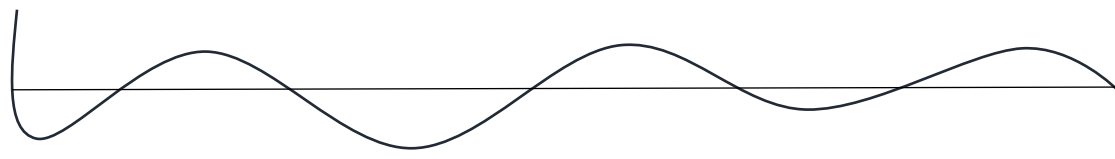
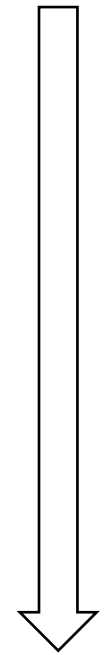


Round Table Approach





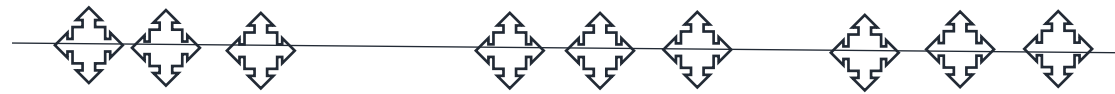
Top Down



Development Policies



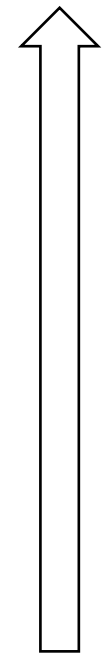
Investment Programs



Transformational Projects



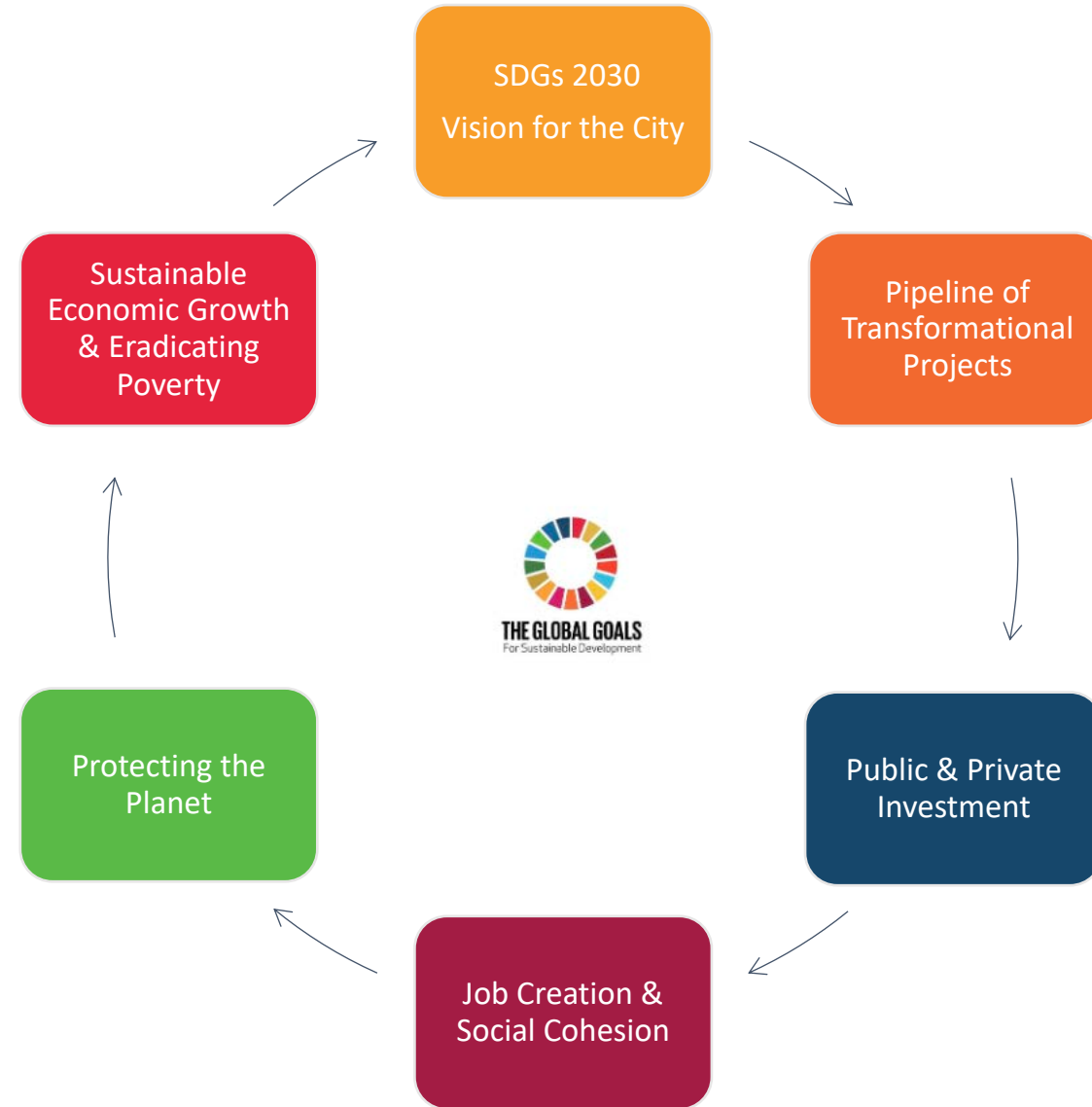
THE GLOBAL GOALS For Sustainable Development

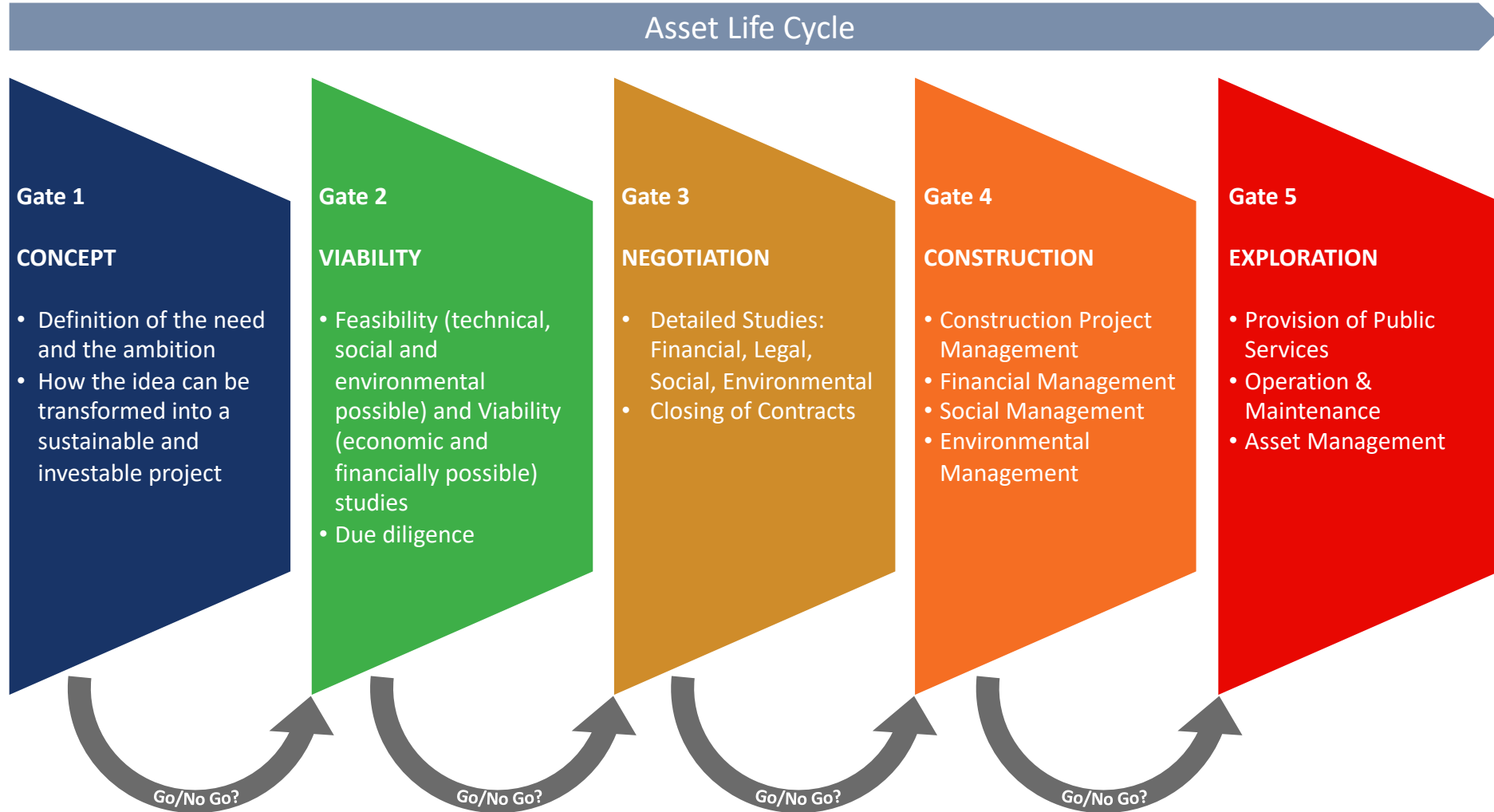


Bottom Up



Tool 10 _ Creating Sustainable Urban Development Cycle

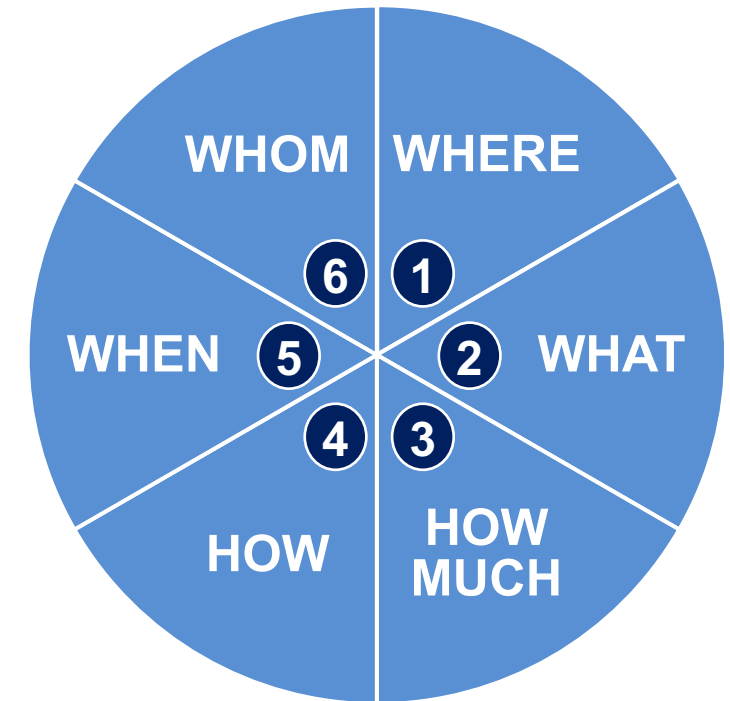






Project Book builds up information in 6 dimensions

- 1 **WHERE/Context**
Country, Nation, City, Population, Government, SOEs, pathologies, ambitions, vision 2030, GDP, GINI, HDI
- 2 **WHAT/Product**
Description of the infrastructure, purpose, public service to be provided by the asset in the system
- 3 **HOW MUCH/Budget**
Global Investment Values, CAPEX, OPEX, Payback Period, Financing and Funding, IRR, NPV, Equity/Debt Ratio, Value for Money, Value for People, Value for Planet
- 4 **HOW/ Transformation & Impact**
Transformation & Value Creation Process, People & Planet Impact
- 5 **WHEN/Milestones**
Key delivery dates, historic of projects, future dates influencing the project (elections), International commitments SDGs
- 6 **WHOM/Organization**
Main *stakeholders* on the decision, influence, implementation making process



People-first PPP Case Studies



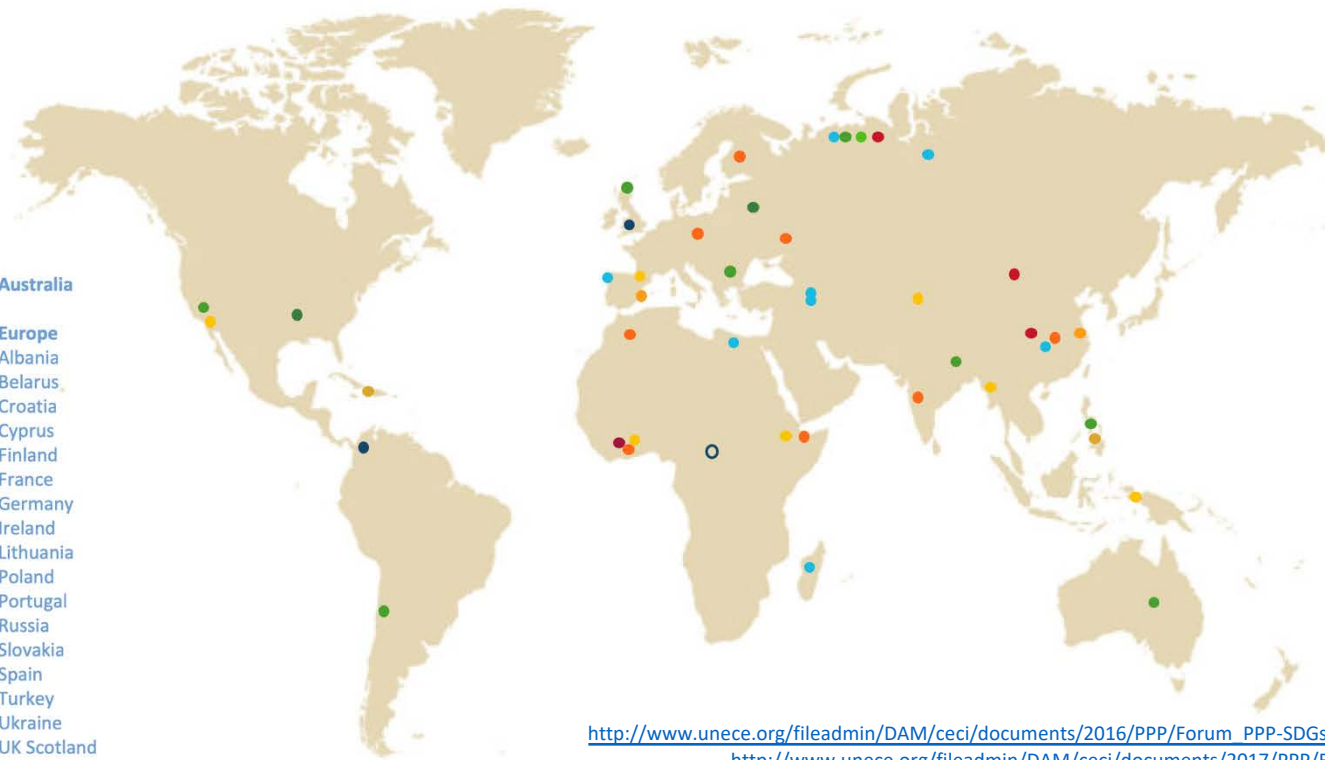
Africa
 Algeria
 DRC
 Egypt
 Ethiopia
 Ghana
 Guinea-Bissau
 Kenya
 Madagascar
 Mauritius
 STP
 Senegal

America
 Brazil
 Chile
 Colombia
 Costa Rica
 Haiti
 Mexico
 Peru
 USA

Asia
 Armenia
 Bangladesh
 China
 India
 Indonesia
 Japan
 Korea
 Mongolia
 Myanmar
 Philippines
 Tajikistan

Australia

Europe
 Albania
 Belarus
 Croatia
 Cyprus
 Finland
 France
 Germany
 Ireland
 Lithuania
 Poland
 Portugal
 Russia
 Slovakia
 Spain
 Turkey
 Ukraine
 UK Scotland
 UK Wales



- Agriculture
- Health
- Education
- Water
- Energy
- Job Creation
- Mobility
- Cities
- Communication
- Finance
- Peace

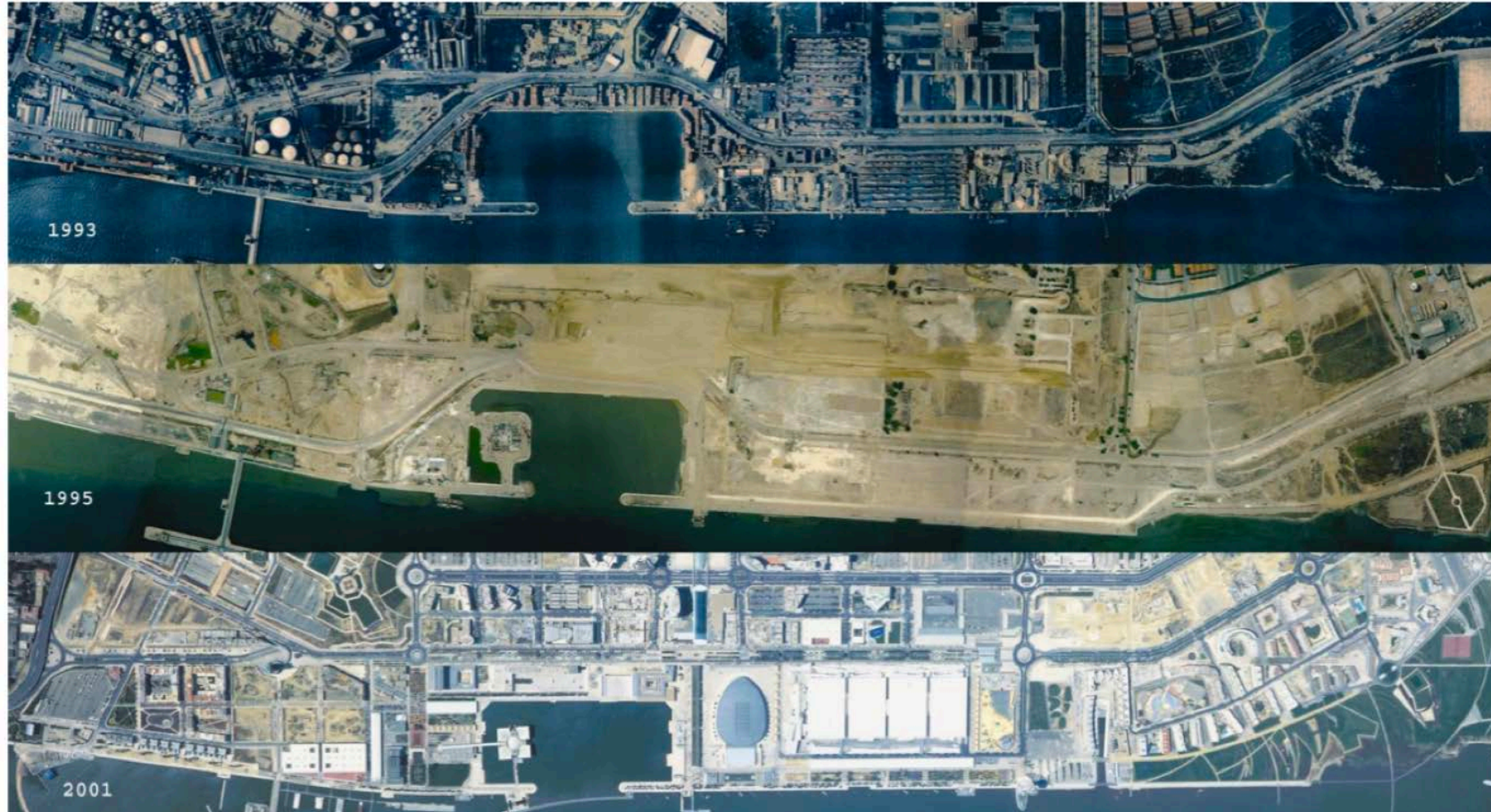
**Compendium
 of People-first
 PPP
 120 Case
 Studies
 from
 57 countries
 covering the
 17 SDGs**

http://www.unece.org/fileadmin/DAM/ceci/documents/2016/PPP/Forum_PPP-SDGs/Compendium_revised_-_16_June.pdf
http://www.unece.org/fileadmin/DAM/ceci/documents/2017/PPP/Forum/Case_Studies_Compendium.pdf
http://www.unece.org/fileadmin/DAM/ceci/documents/2018/PPP/Forum/Documents/Case_Study_Database_2018.pdf



Evidence-based Policy on People—first PPPs and Innovative Financing

People-first PPP Case Studies

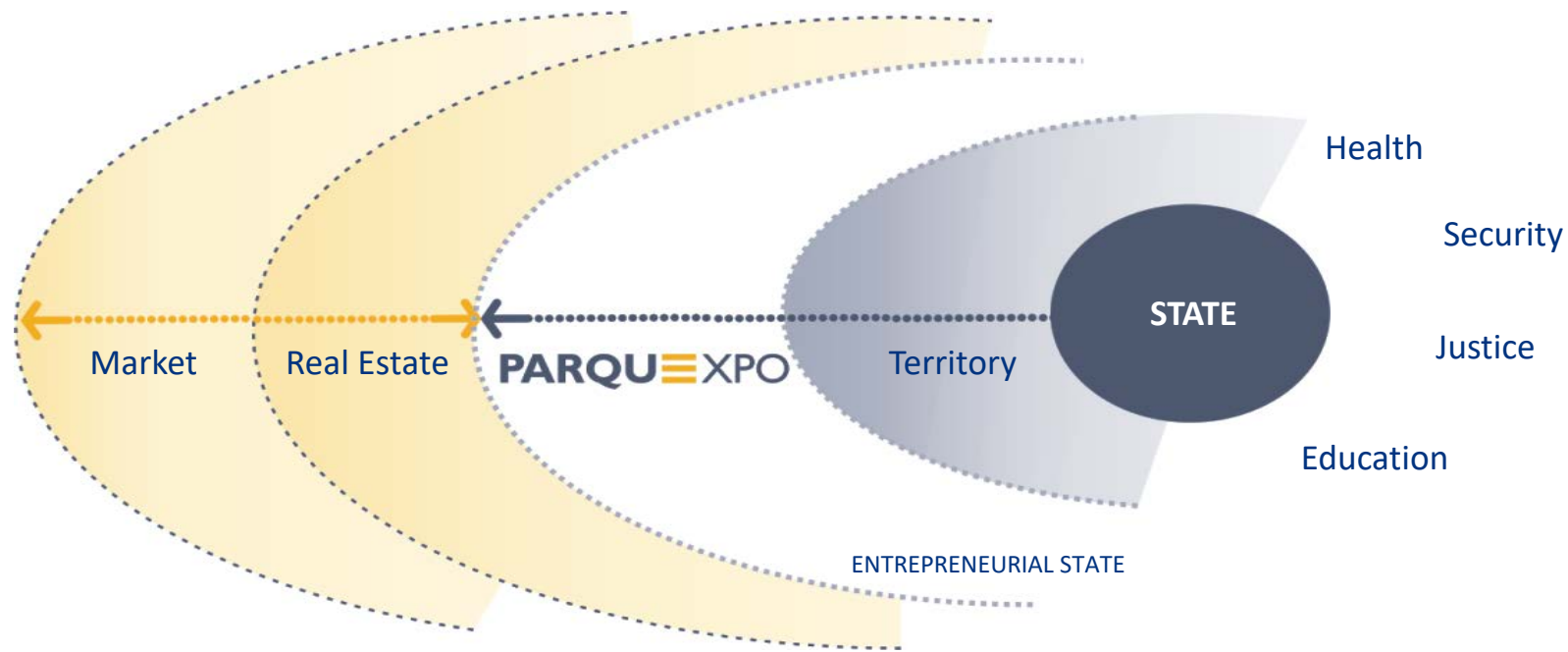




Evidence-based Policy on People—first PPPs and Innovative Financing

People-first PPP Case Studies

→ Public Strategy | Private Dynamics

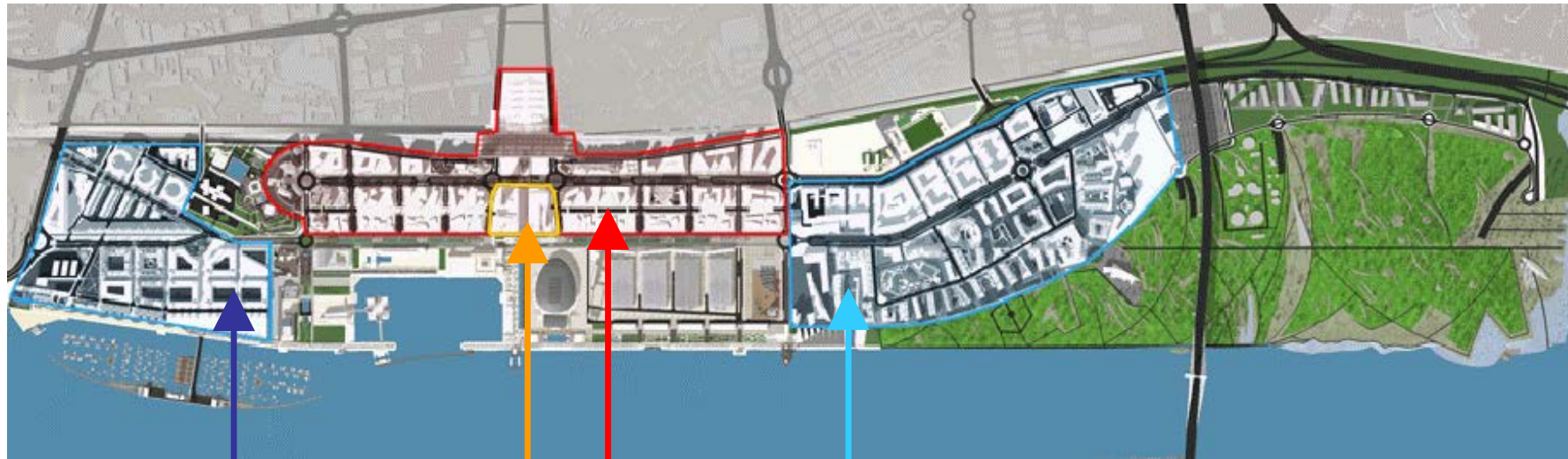


←..... State economic range of intervention

←..... Private economic range of intervention

Evidence-based Policy on People—first PPPs and Innovative Financing

People-first PPP Case Studies

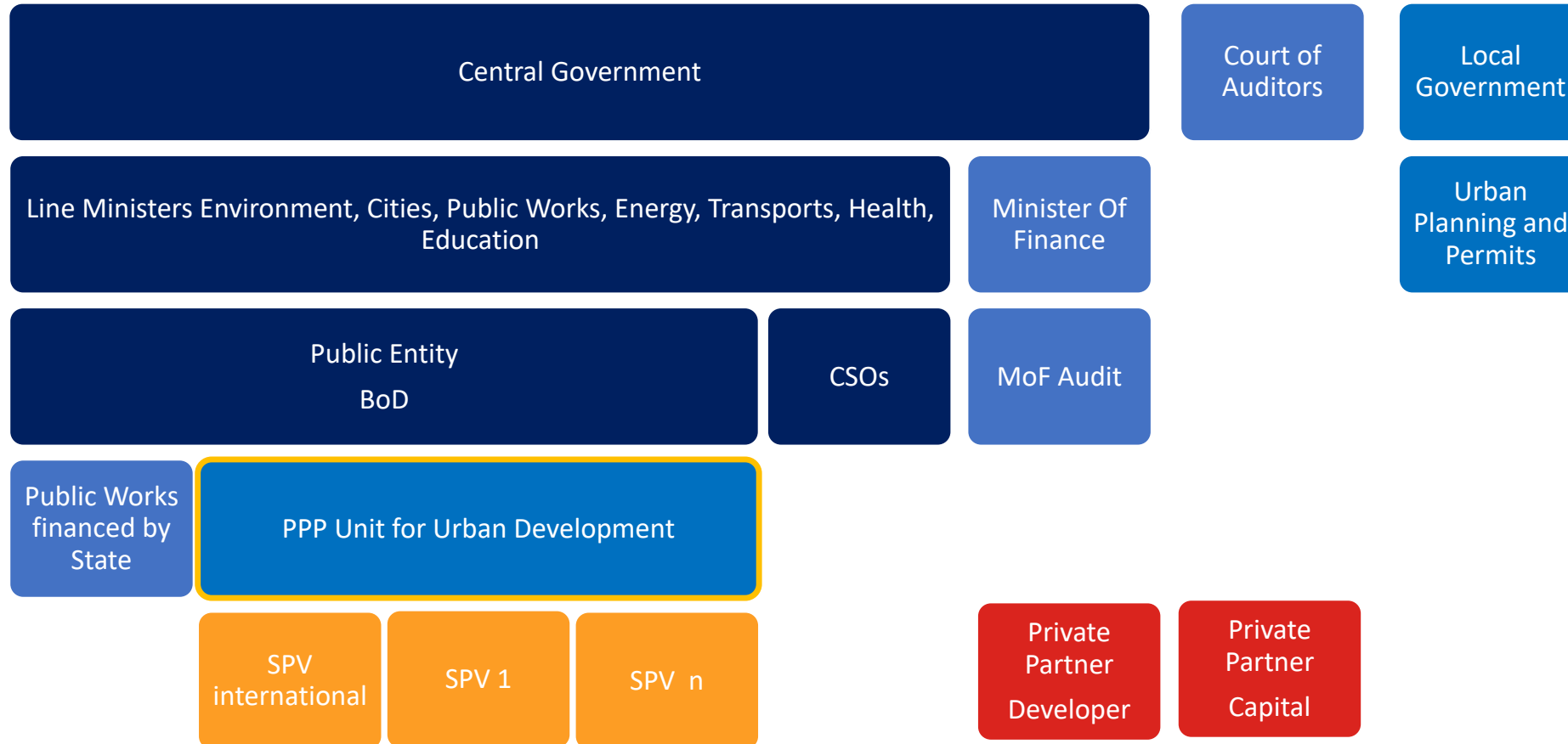


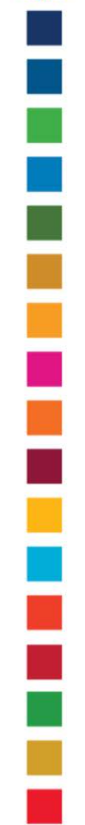
• Residential:	1,240,000 sqm
• Offices:	610,000 sqm
• Retail:	170,000 sqm
• Others:	300,000 sqm
• Total:	2,320,000 sqm



Evidence-based Policy on People—first PPPs and Innovative Financing

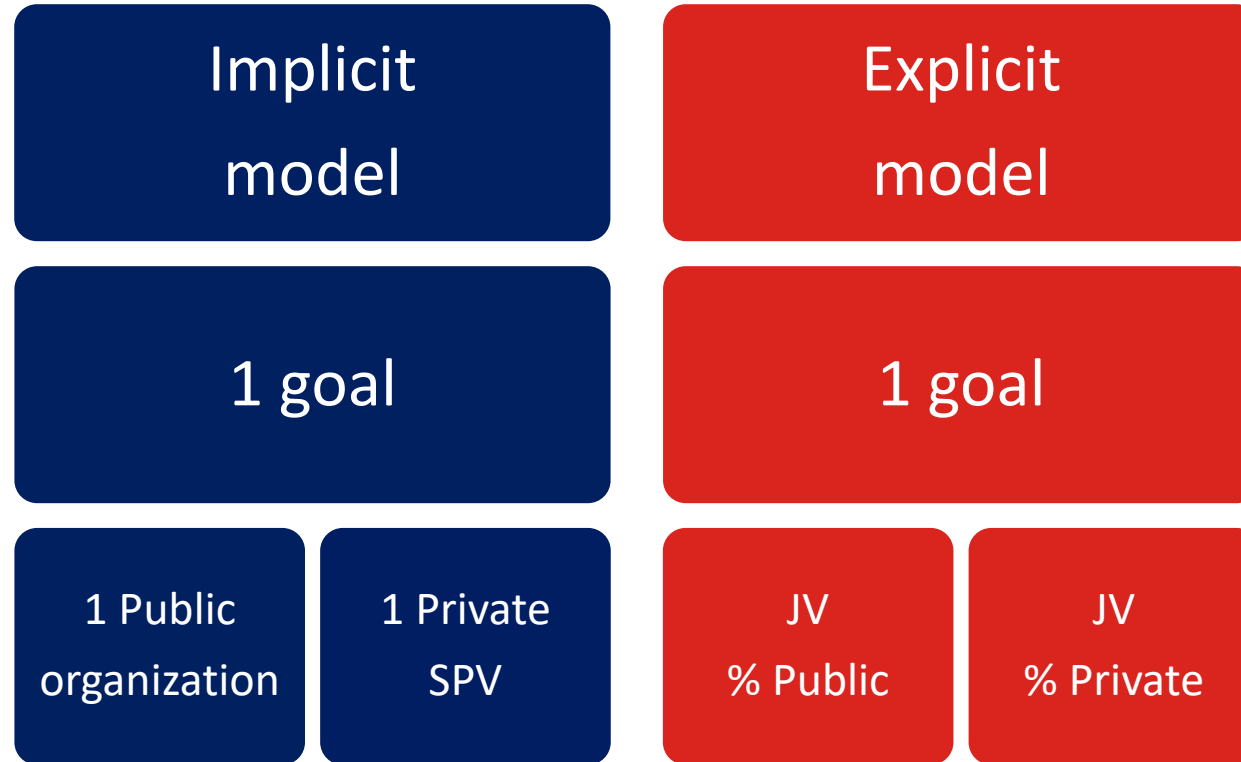
People-first PPP Case Studies





Evidence-based Policy on People—first PPPs and Innovative Financing

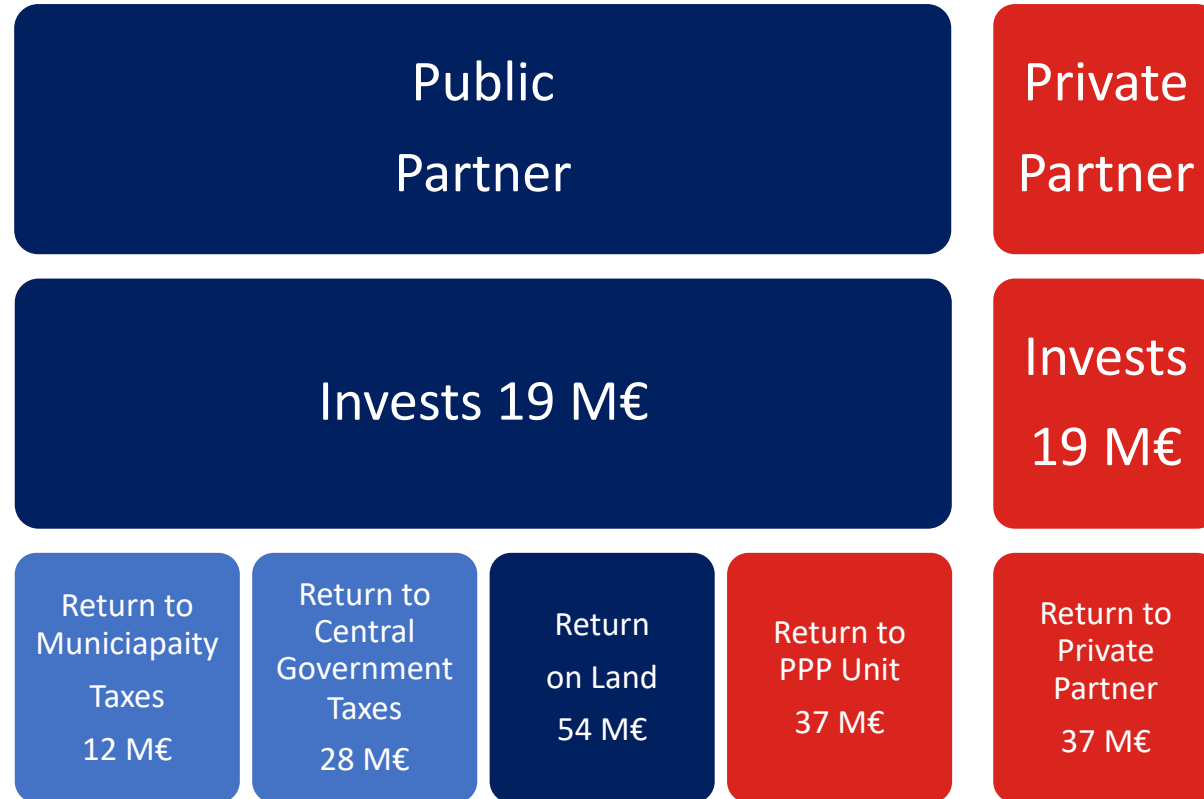
People-first PPP Case Studies

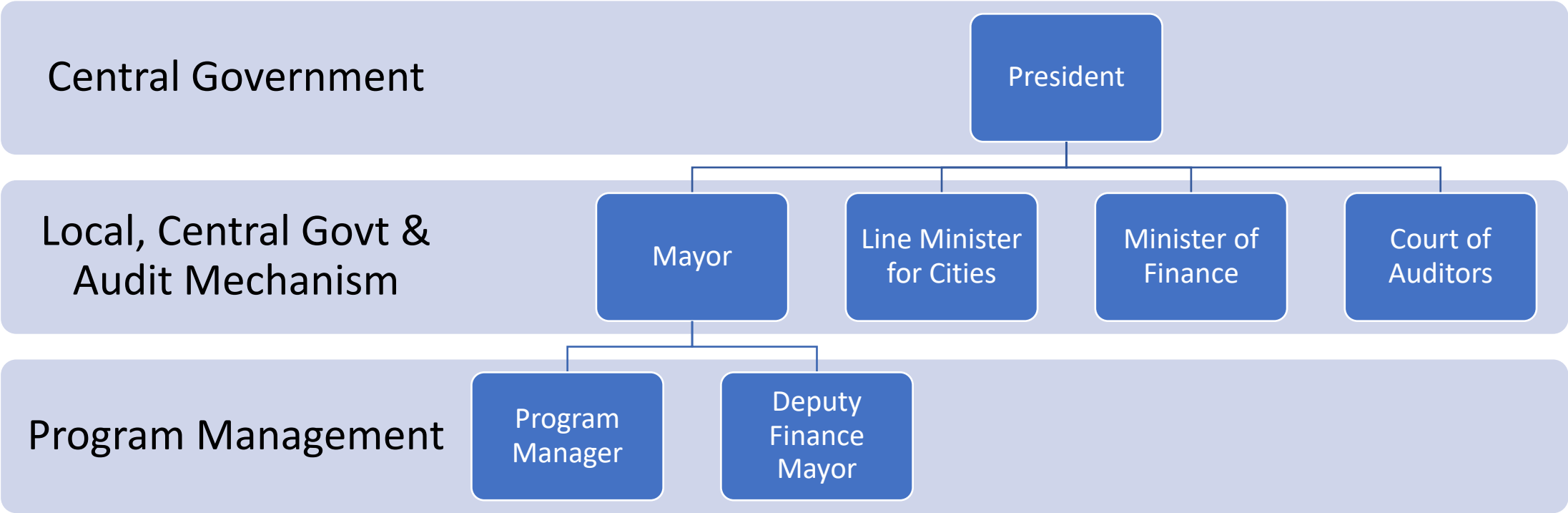




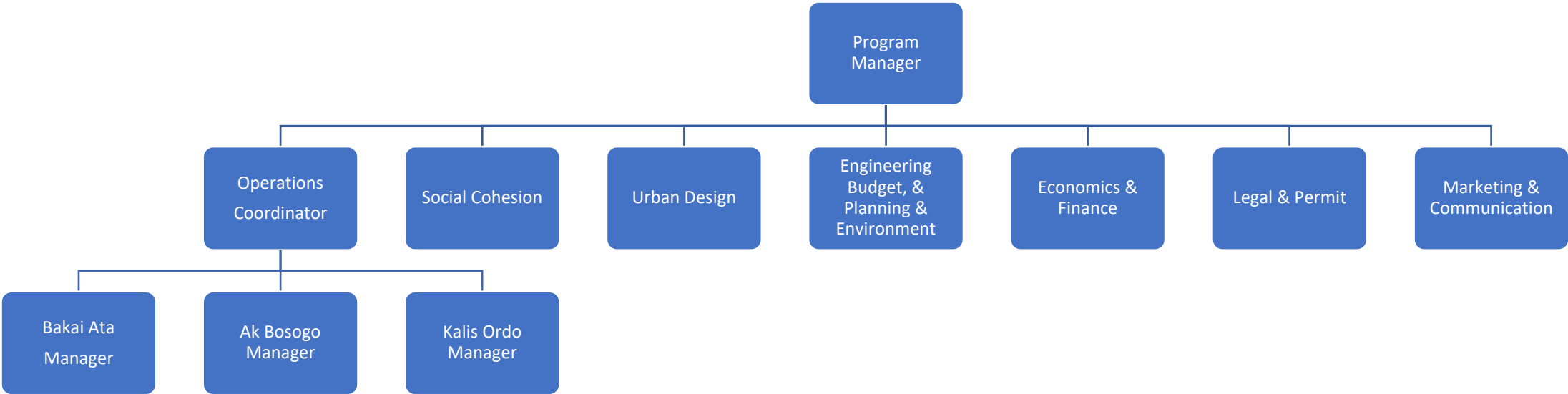
Evidence-based Policy on People—first PPPs and Innovative Financing

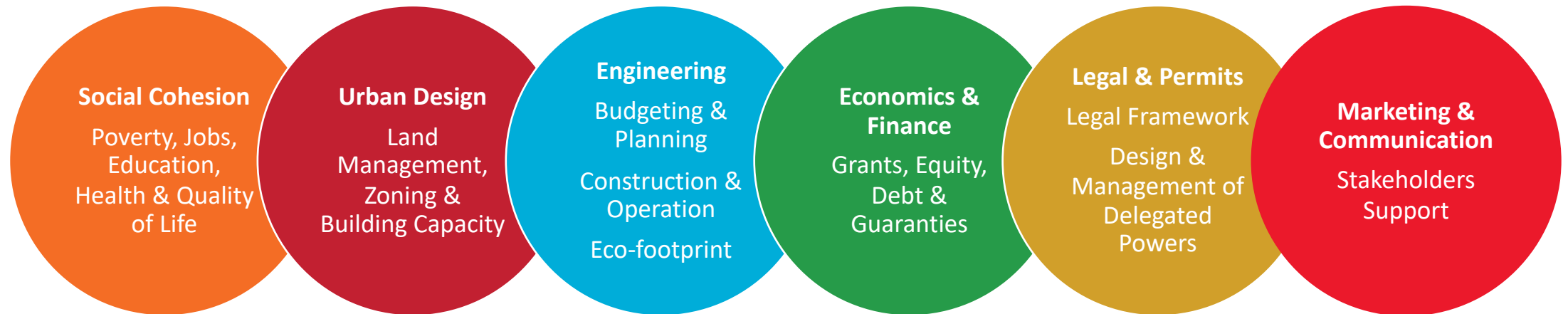
People-first PPP Case Studies





Draft Program Organization Chart







Next steps for discussion and definition of timings:

- i. Develop the AS IS (build up on top of information presented) (Program Manager)
- ii. Develop Database of Residents, Employment needs, abilities, opportunities (Sociology)
- iii. Develop the TO BE (vision and objectives) (President, Mayor, Program Manager)
- iv. Develop Pipeline of Projects (Urban Design and Engineering)
- v. Define Priorities (Program Manager)
- vi. Balance Cash Positive with Cash Negative (Engineering & Marketing)
- vii. Develop Database for Budget and Planning (costs and delays) (Engineering)
- viii. Develop Database of needs and local entrepreneurs able to provide solutions (Engineering)
- ix. Develop Database for Asset Investment on Urban Development (Legal)
- x. Develop Database of Investors and Lenders Equity, Debt & Guaranties (Finance)

Pipeline of Projects cash positive and negative



Pipeline of Projects	Capital Expenditure	Operational Expenditure	Revenue Stream
Mobility Transport projects including roads, bikelanes, parking plots, bus stops and terminals, rail and railway stations			
Utilities Stations, Plants and Networks including power, district heating, wifi, water, wastewater, solidwaste			
Social Infrastructure Education, health, police, firestations, and social housing			
Real Estate Housing, retail, services, logistics and industry			

Global Solutions (Cascais)
Founder and Managing Partner;
United Nations Economic Commission for Europe (Geneva)
Business Advisory Board;
SDGs Task Force Leader for PPPs;
Tsinghua University (Beijing)
Contributing Specialist for PPPs;
IESE Business Scholl & Iberdrola (Barcelona)
Business Advisory Board for SMART CITIES;
ESAI MBA Urban Renewal and Cities of The Future (Lisbon)
Founder and Coordinating Professor;
École des Ponts et Chaussées _ Paris Tech (Paris)
Visiting Professor at the Advanced Masters in Infrastructure Project Finance;
Université de Genève
Module Coordinator in How to Localize the SDGs



Obrigado,

Pedro Neves

pedroneves@globalsolutions4u.com

Harvard Business School (Cambridge)
Private Equity & Venture Capital;
TCN Academy (Utrecht)
Asset Management & Asset Development;
Universidade Católica Lisboa (Lisbon)
Business Administration;
Bouygues Academy (Paris)
Project Management;
Imperial College (London)
Petroleum Engineering;
Faculdade Engenharia Universidade do Porto (Porto)
Mining Engineering;



Global Goals are Global Challenges that require Global Solutions

