

# Improving urban resilience through Nature- Based Solutions

**Leonie Meier, Consultant, UNECE/FAO  
Forestry and Timber Section**

**Thematic Workshop “Improving Urban  
Resilience in Informal Settlements”  
24 November 2020**





# Nature-based solutions...

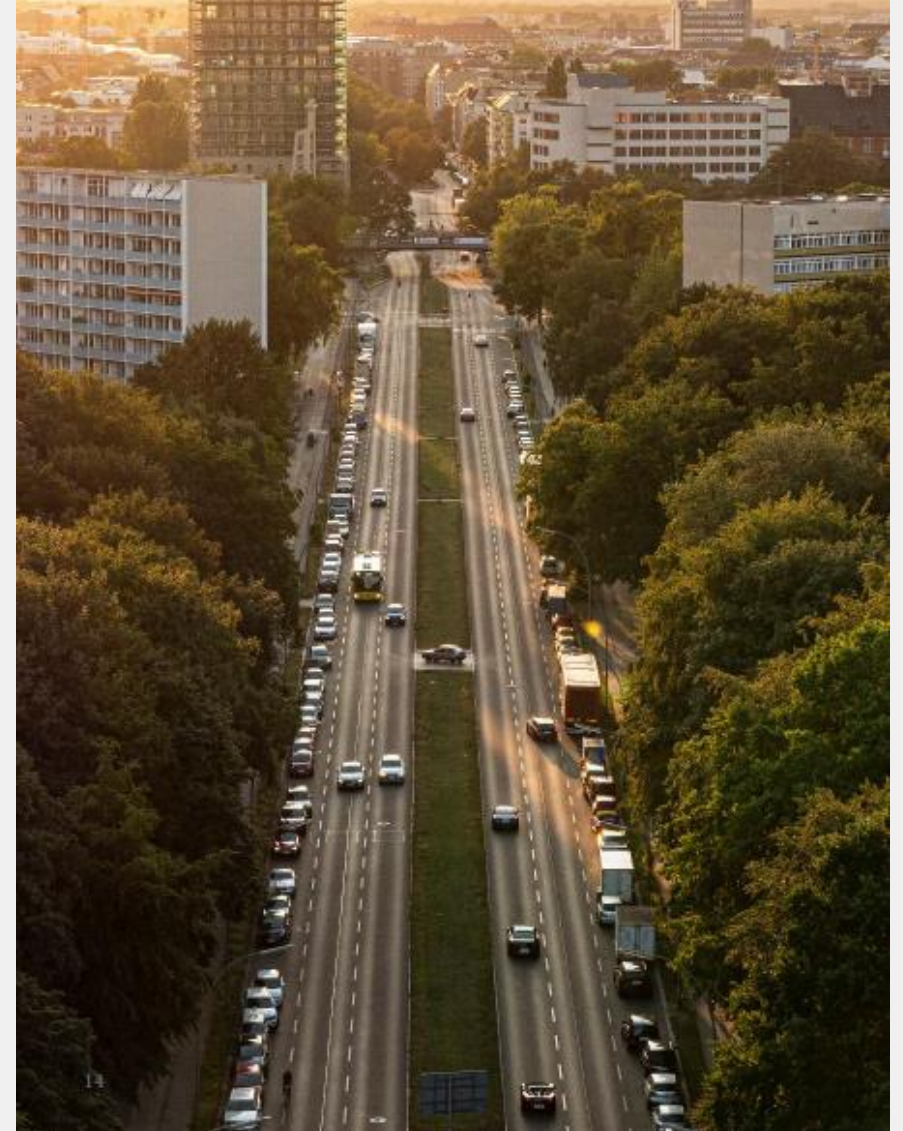
## What are they?

**“Solutions that are inspired and supported by nature, which are cost-effective, simultaneously provide environmental, social and economic benefits and help build resilience. Such solutions bring more, and more diverse, nature and natural features and processes into cities, landscapes and seascapes, through locally adapted, resource-efficient and systemic interventions” (European Commission)**



# Green Infrastructure

Credit: Land and Water, Inc. [www.landandwater.com](http://www.landandwater.com)



Green roof at Mountain EquipmentCoop, Toronto, Canada



# A little bit of context...

- 73 % of the population in UNECE region lives in urban areas
- A lot of recent urban growth, esp. in countries with economies in transition, is unplanned
- Drivers include concentration of opportunities in cities, poverty, displacement due to conflicts, natural disasters and others

Leading to the proliferation of informal settlements, often built upon previously rural or forested land...



Podgorica, Montenegro. Credit: C. Potsiou



Ledine  
(Belgrade,  
Serbia) –  
Formal

(source: Bing  
maps)



Ledine  
(Belgrade,  
Serbia) –  
Informal

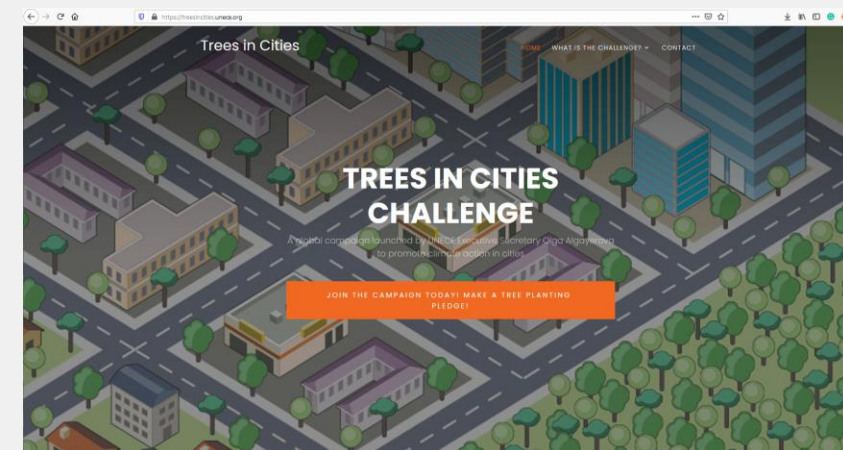
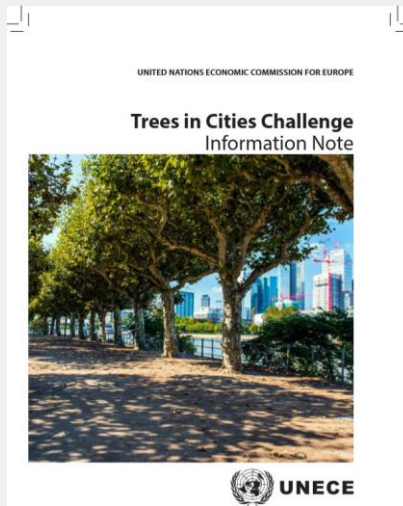
(source: Bing  
maps)





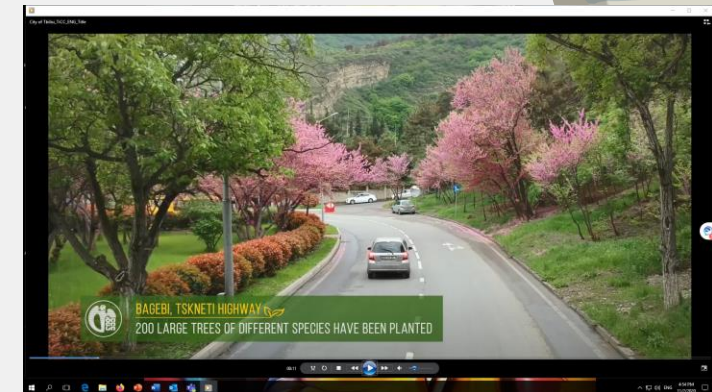
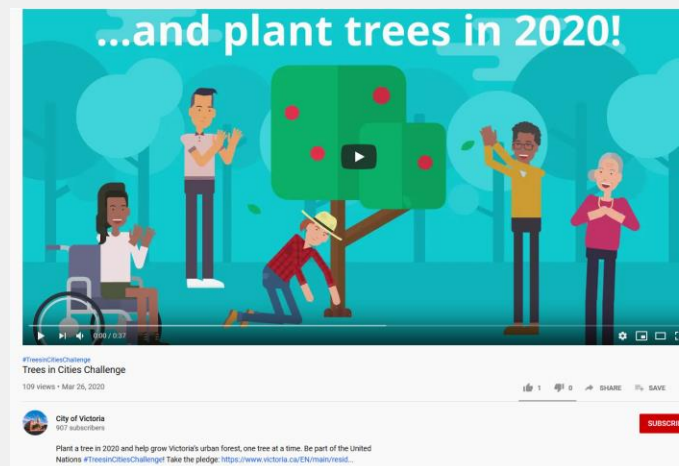
# Urban trees and forests and the "Trees in Cities Challenge"

- Background: launched at the SG's Climate Action Summit in September 2019 by UNECE Executive Secretary
- Aim: to promote sustainable management of urban forests, climate action at the local level & increase canopy cover in cities
- Website, promotional brochure, promo video + communication materials...




# So far...

- The process – direct pledges from local authorities
- As of 1 November 2020, **20 cities** pledged to plant **11 million** new trees & identified priorities for better management in the future
- Outreach campaigns at the local level, citizen involvement







“What happens when you cut down all of a city’s trees?” -

<https://www.youtube.com/watch?v=zarll9bx6FI&feature=youtu.be>

**Leonie Meier, Consultant, UNECE/FAO  
Forestry and Timber Section**

Thank you!